

# CERTIFICATE OF LOCATION OF GOVERNMENT CORNER

County of Anoka

State of Minnesota

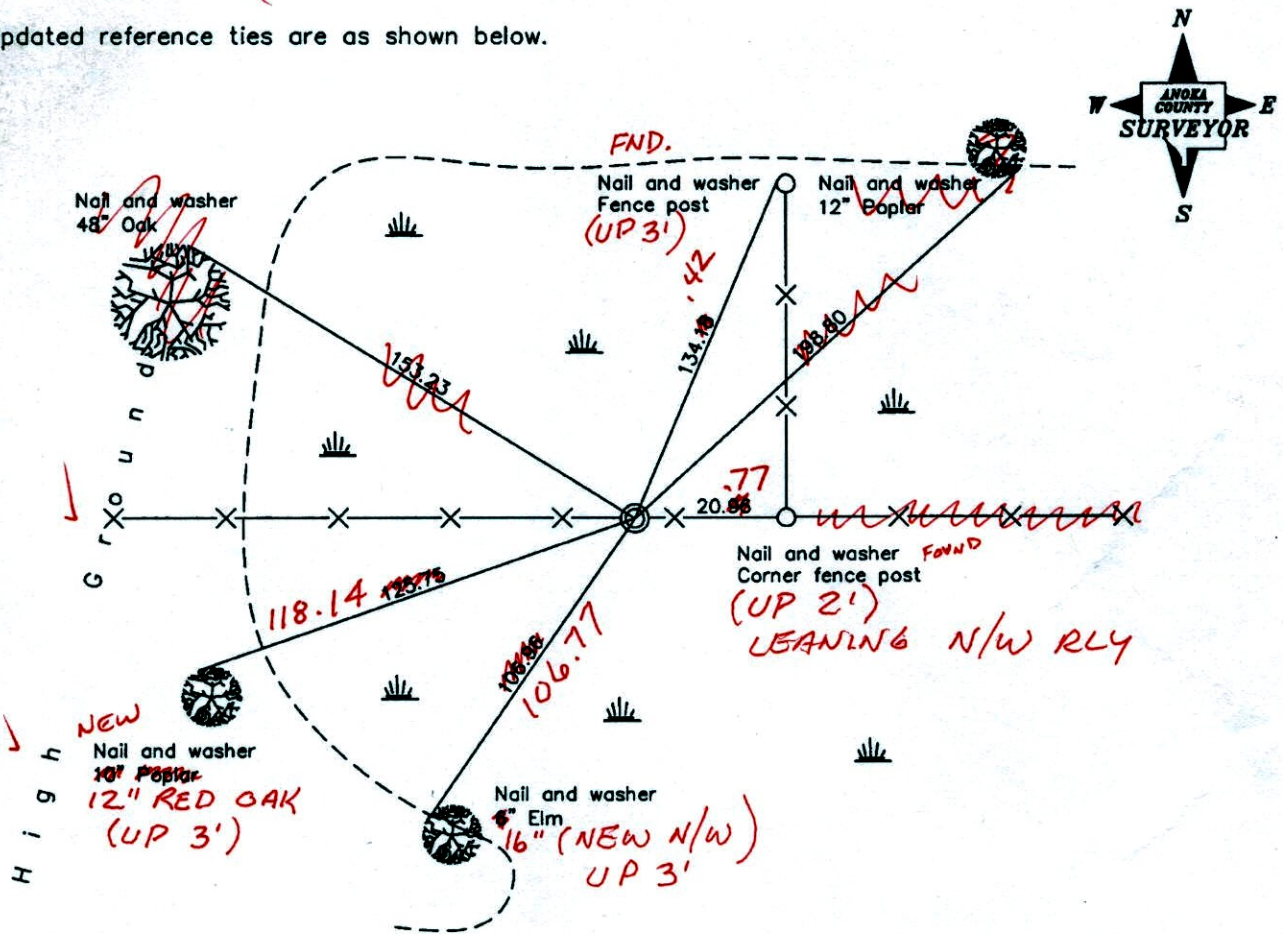
West 1/4 Corner of Sec. 1 Township 32 Range 22

On the 26th day of December, 1965, the described corner was evidenced by a 2" capped iron pipe

and to perpetuate the location of said corner, at the exact location thereof, a permanent marker was placed consisting of the same 2" capped iron pipe

AND on the 26th day of December, 2007, said permanent marker was found up 1'± and the ties were updated (MON. LEANING S'LY 0.2'±)

Updated reference ties are as shown below.



12-2-14  
BK-55  
TAPED

VRS

Revised date
7/02/90
8/15/95
12/26/07

N.A.D. 1983 Coordinates (1996 Adjustment)	
County Project Coordinates	
Northing	193025.4007
Easting	558386.0096
Date	5/03/05

I hereby certify that this United States public land survey monument record is correct and complete to the best of my knowledge and belief.

*Larry D. Hoium* Date 12/26/07  
 Larry D. Hoium, Anoka County Surveyor  
 Minnesota License Number 18165

3D=6.06

N=193025.2018

E=558386.9605



# CERTIFICATE OF LOCATION OF GOVERNMENT CORNER

County of Anoka

State of Minnesota

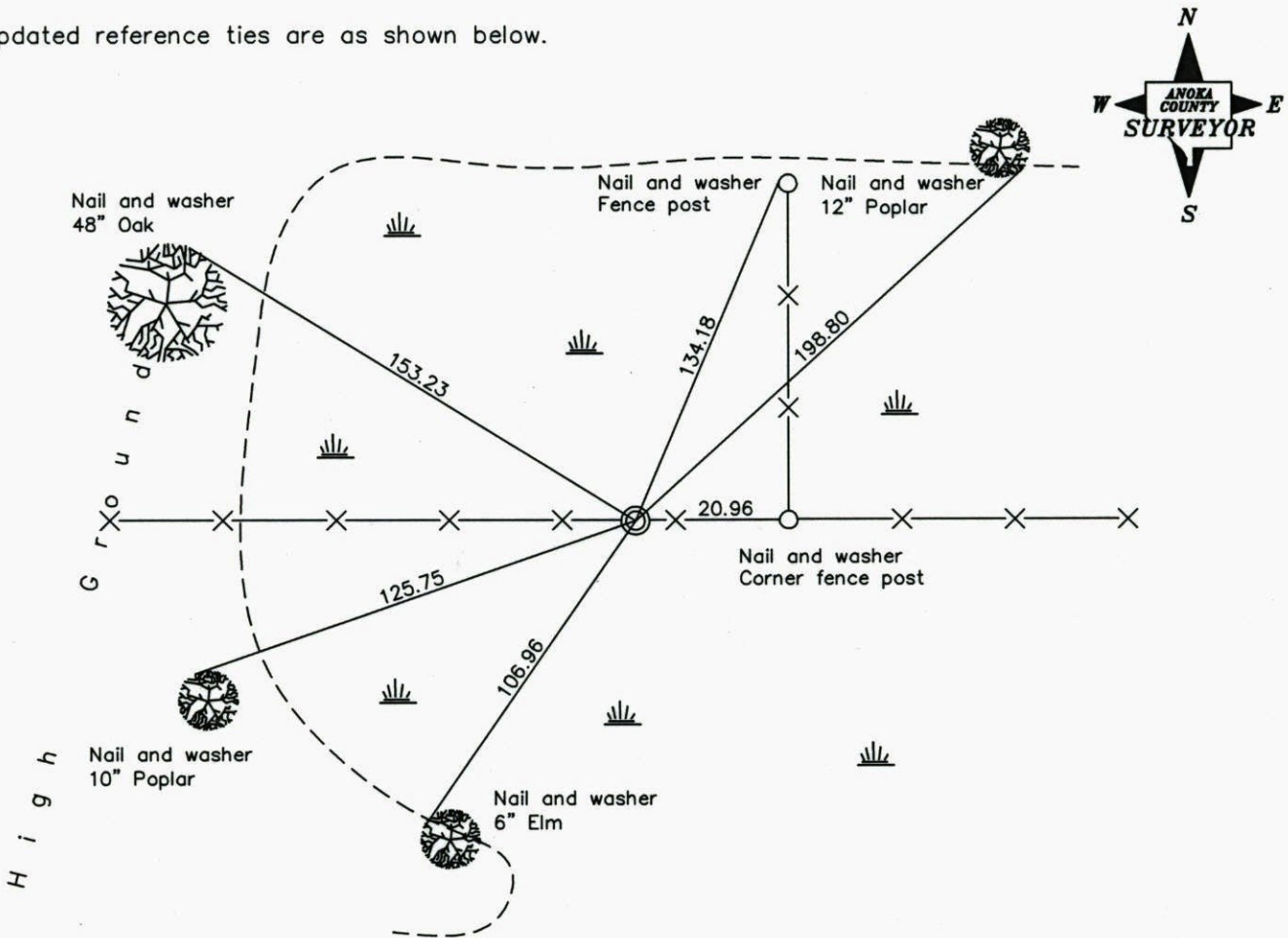
West 1/4 Corner of Sec. 1 Township 32 Range 22

On the 26th day of December, 1965, the described corner was evidenced by a 2" capped iron pipe

and to perpetuate the location of said corner, at the exact location thereof, a permanent marker was placed consisting of the same 2" capped iron pipe

AND on the 26th day of December, 2007, said permanent marker was found up 1'± and the ties were updated

Updated reference ties are as shown below.



Revised date

7/02/90
8/15/95
12/26/07

N.A.D. 1983 Coordinates  
(1996 Adjustment)

County Project Coordinates
Northing <u>193025.4007</u>
Easting <u>558386.0096</u>
Date <u>5/03/05</u>

I hereby certify that this United States public land survey monument record is correct and complete to the best of my knowledge and belief.

*Larry D. Hoium* Date 12/26/07

\_\_\_\_\_  
Larry D. Hoium, Anoka County Surveyor

Minnesota License Number 18165



# CERTIFICATE OF LOCATION OF GOVERNMENT CORNER

County of Anoka

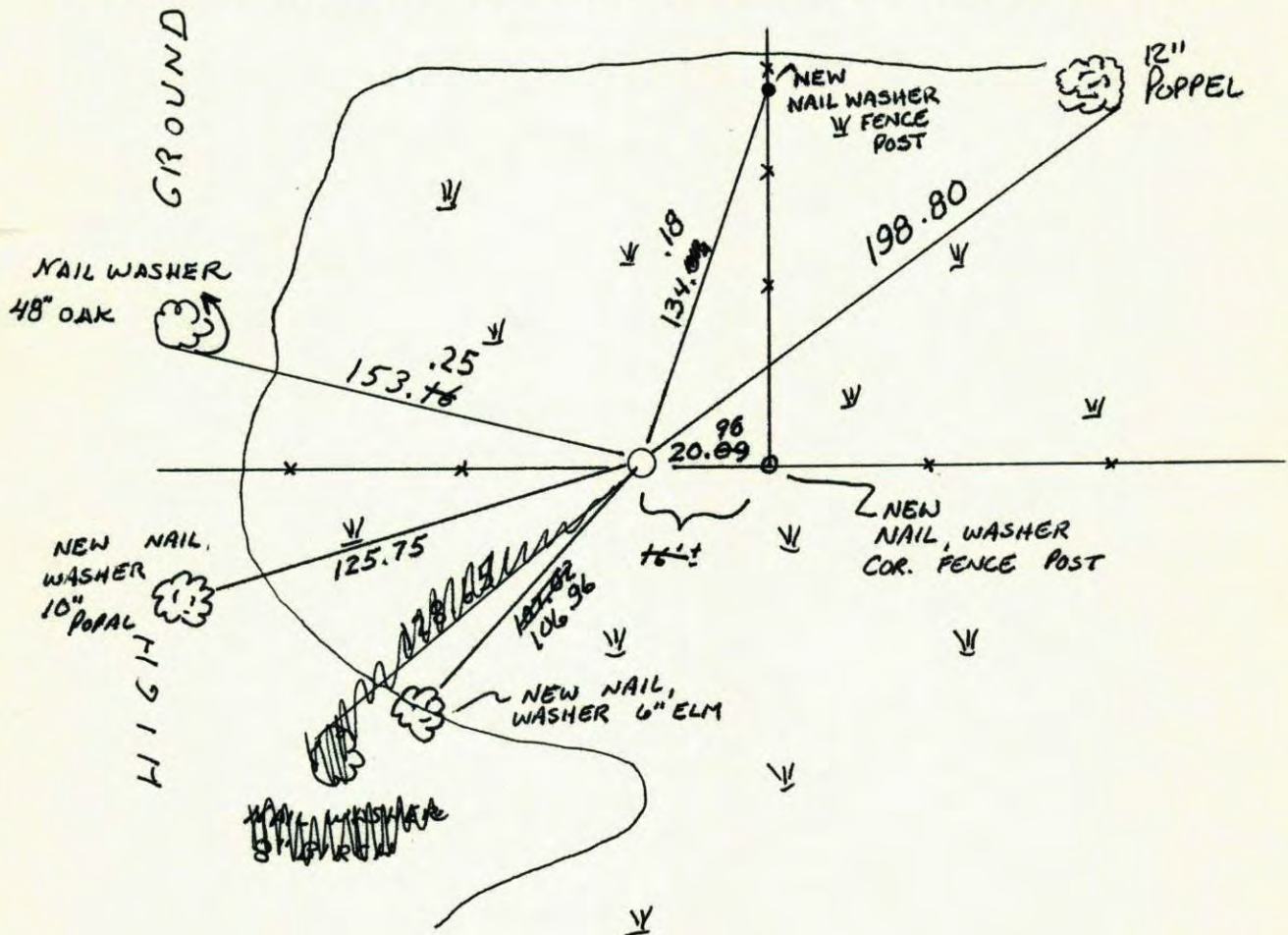
State of Minnesota

WEST 1/4 Corner of Sec. 1 Township 32 Range 22

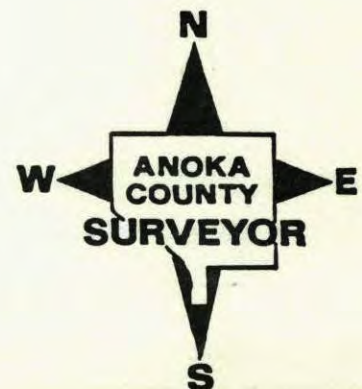
I hereby certify that on the 26 day of DEC., 1965, I found the described corner which was evidenced by 2" CAPPED IRON PIPE

and I further certify that to perpetuate the location of said corner, I did, at the exact location thereof, place a permanent marker consisting of 2" CAPPED IRON PIPE (UP 1' +/-)

which reference or witness monuments are located in the manner following:



Revised date	Revised date	Revised date
12-26-68		
7-9-82		
7-2-90		
8-15-95		
7-10-07		





# CERTIFICATE OF LOCATION OF GOVERNMENT CORNER

County of Anoka

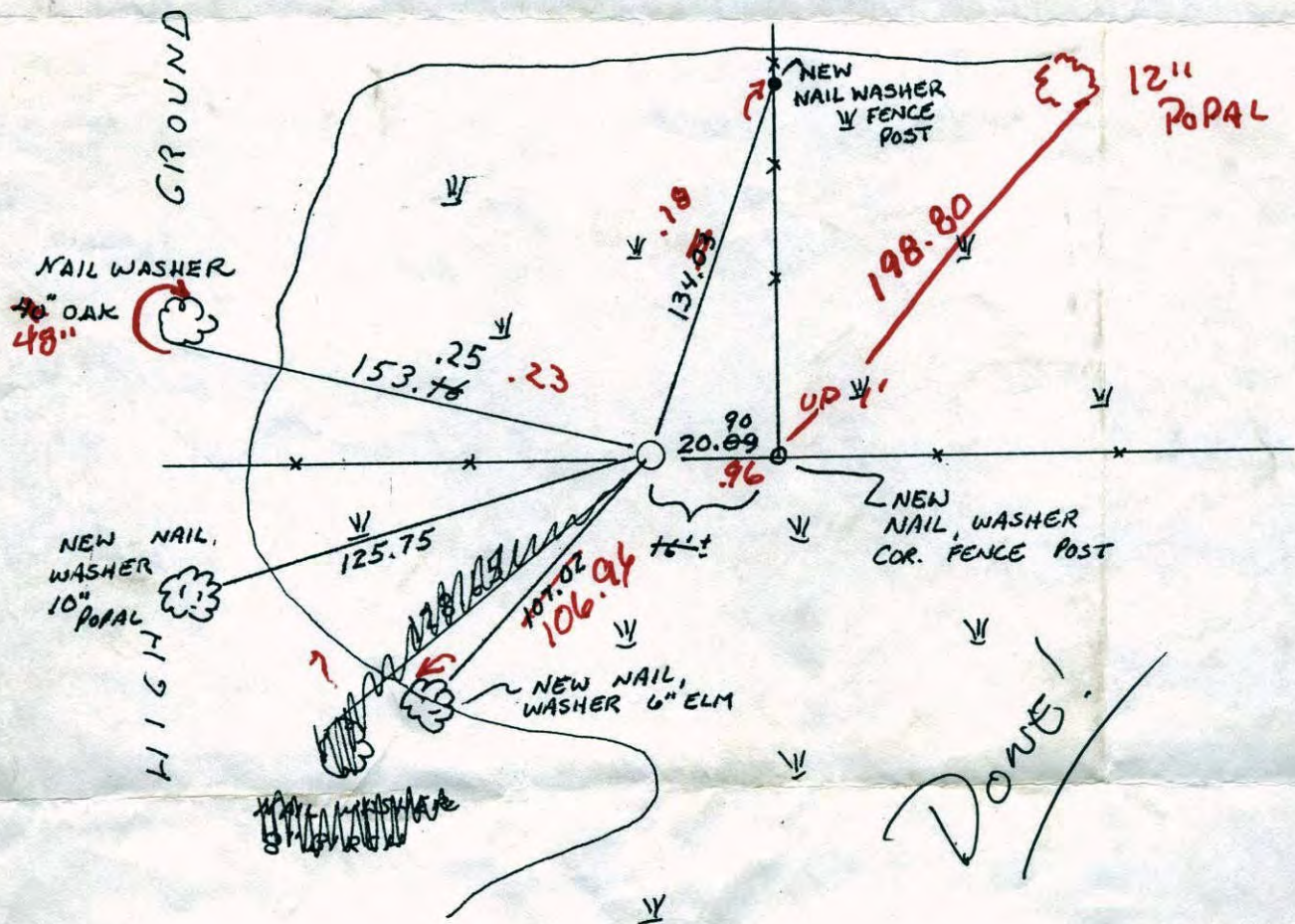
State of Minnesota

WEST 1/4 Corner of Sec. 1 Township 32 Range 22

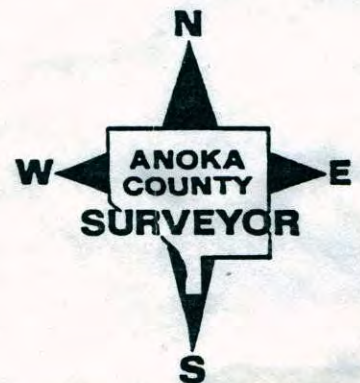
I hereby certify that on the 26 day of DEC., 1965, I found the described corner which was evidenced by 2" CAPPED IRON PIPE

and I further certify that to perpetuate the location of said corner, I did, at the exact location thereof, place a permanent marker consisting of 2" CAPPED IRON PIPE  
UP 1' 4 1/2"

which reference or witness monuments are located in the manner following:



Revised date	Revised date	Revised date
12-26-68		
7-9-82		
7-2-90		
8-15-95		



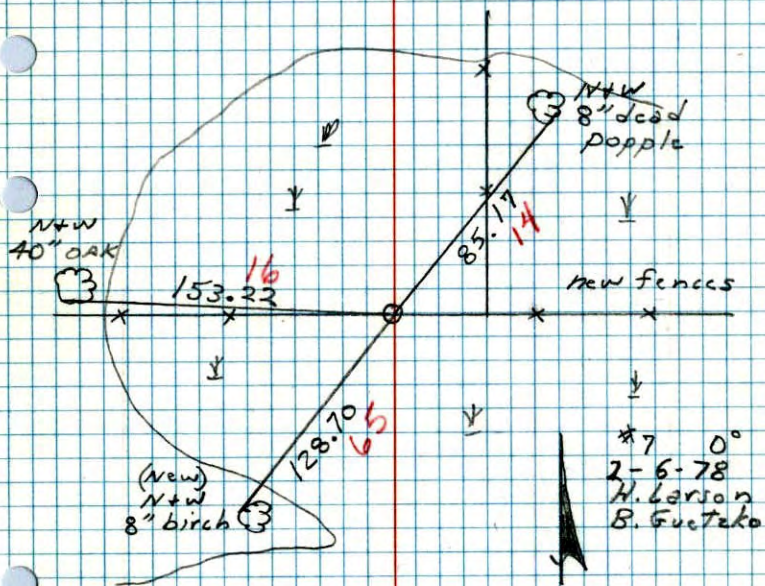






W<sup>1</sup>/<sub>4</sub> Cor. Section 1 T32 R22

Reticid 2" capped iron pipe found  
in 1968. IP. up 1'± in wet  
swamp.

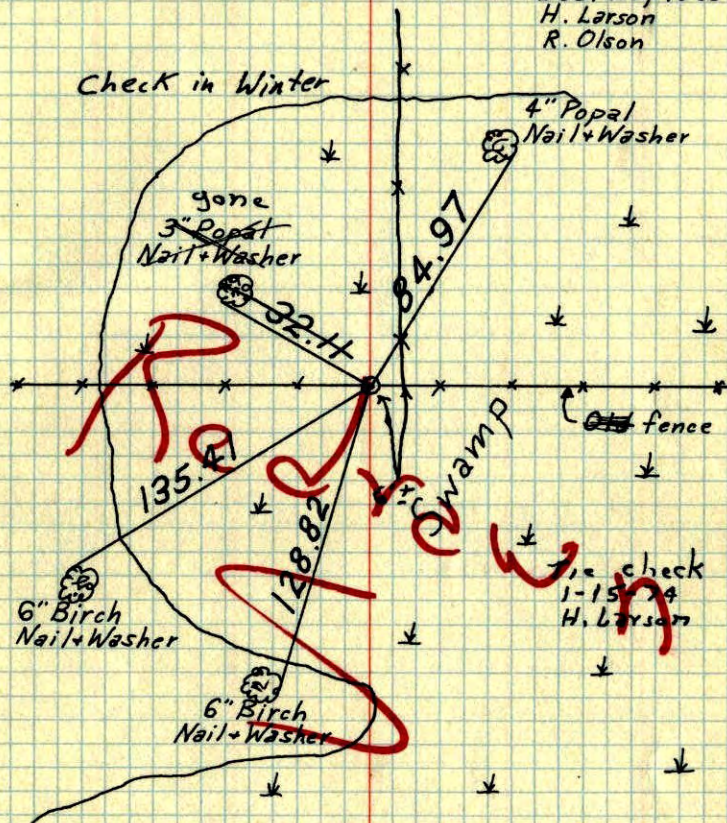


\*7 0°  
2-6-78  
H. Larson  
B. Guetako

W<sup>1</sup>/<sub>4</sub> Cor. Sec. 1 - T32 - R22

Found 2" Capped Iron Pipe up 0.5'±.

Dec. 26, 1968  
H. Larson  
R. Olson



TEMPERATURE CORRECTED  
AND HORIZONTALLY  
TAPED MEASUREMENTS

ROLAND W. ANDERSON  
COUNTY SURVEYOR  
ANOKA COUNTY, MINNESOTA



W 1/4 Cor. Sec. 1 T32 R22

Found & Tied 2" capped iron  
pipe up .5'

