

CERTIFICATE OF LOCATION OF GOVERNMENT CORNER

County of Anoka State of Minnesota

Witness Corner of Sec. 1 Township 32 Range 22
(on the east line of NE1/4)

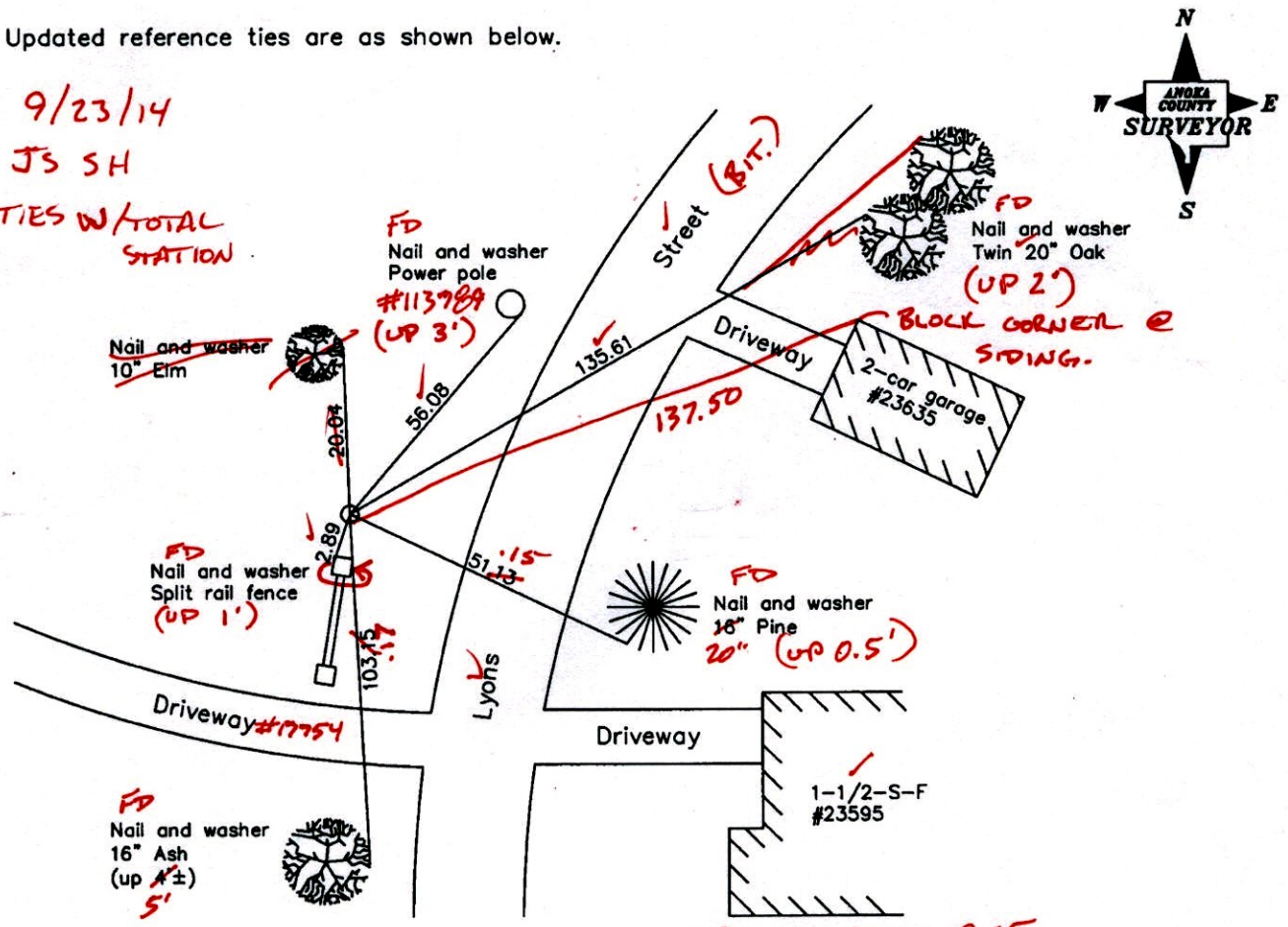
On the 3rd day of August, 1964, the described corner was evidenced by Don Hult's ties

and to perpetuate the location of said corner, at the exact location thereof, a permanent marker was placed consisting of a 1/2" iron pipe

AND on the 26th day of December, 2007, said permanent marker was found and the ties were updated
(PUT ANOKA COUNTY CAP IN IP)

Updated reference ties are as shown below.

*9/23/14
JS SH
TIES W/TOTAL STATION*



*VRS 3D QUAL = 0.05
N: 193620.5454
E: 563609.4028*

Revised date
8/18/89
8/10/95
12/26/07

N.A.D. 1983 Coordinates (1996 Adjustment)	
County Project Coordinates	
Northing	193620.5910
Easting	563609.4312
Date	6/18/03

I hereby certify that this United States public land survey monument record is correct and complete to the best of my knowledge and belief.

Larry D. Holium Date 12/26/07
 Larry D. Holium, Anoka County Surveyor
 Minnesota License Number 18165

CERTIFICATE OF LOCATION OF GOVERNMENT CORNER

County of Anoka

State of Minnesota

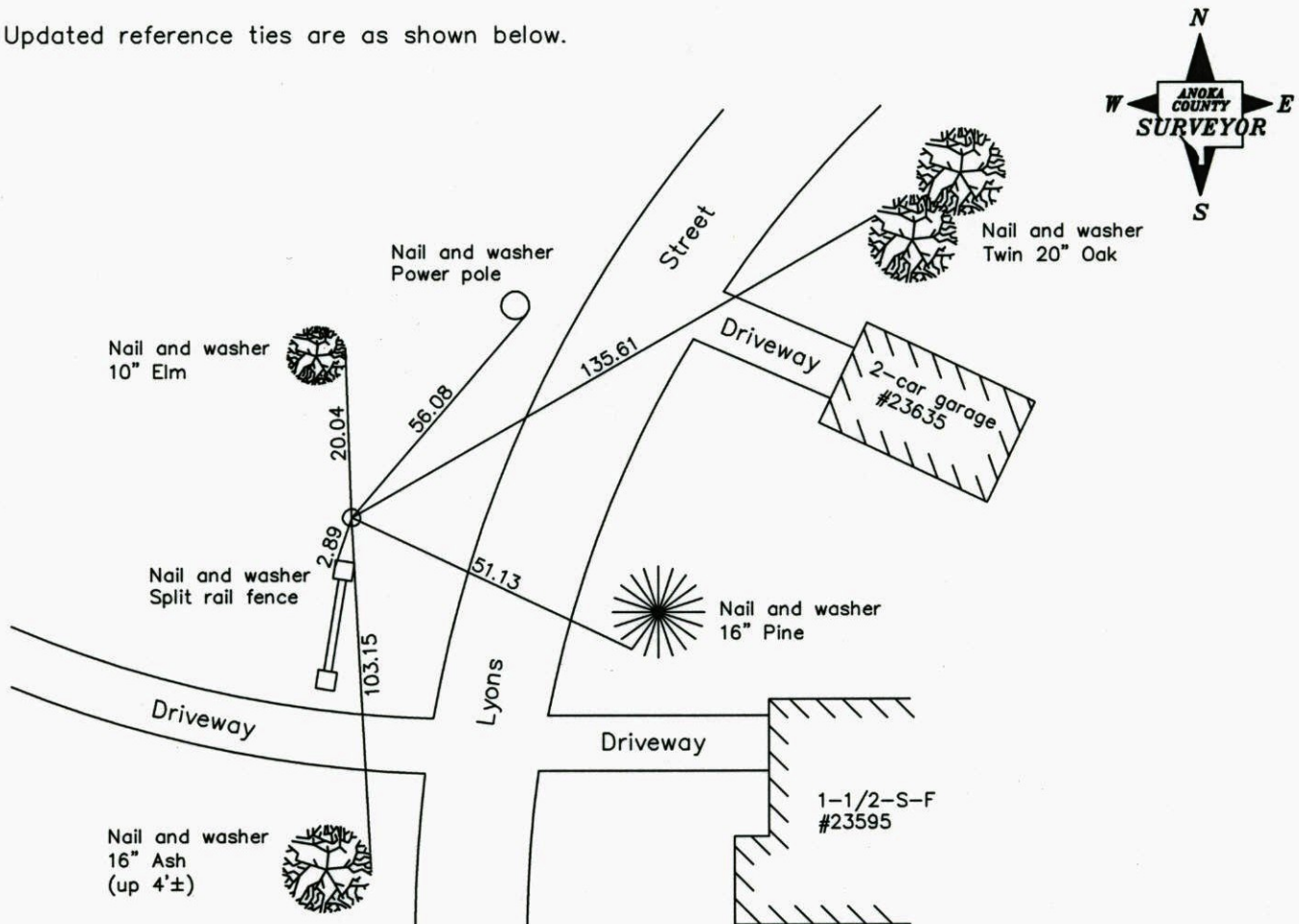
Witness Corner of Sec. 1 Township 32 Range 22
 (on the east line of NE1/4)

On the 3rd day of August, 1964, the described corner was evidenced by Don Hult's ties

and to perpetuate the location of said corner, at the exact location thereof, a permanent marker was placed consisting of a 1/2" iron pipe

AND on the 26th day of December, 2007, said permanent marker was found and the ties were updated

Updated reference ties are as shown below.



Revised date
8/18/89
8/10/95
12/26/07

N.A.D. 1983 Coordinates (1996 Adjustment)	
County Project Coordinates	
Northing	<u>193620.5910</u>
Easting	<u>563609.4312</u>
Date	<u>6/18/03</u>

I hereby certify that this United States public land survey monument record is correct and complete to the best of my knowledge and belief.

Larry D. Hoium Date 12/26/07

 Larry D. Hoium, Anoka County Surveyor

Minnesota License Number 18165

CERTIFICATE OF LOCATION OF GOVERNMENT CORNER

County of Anoka

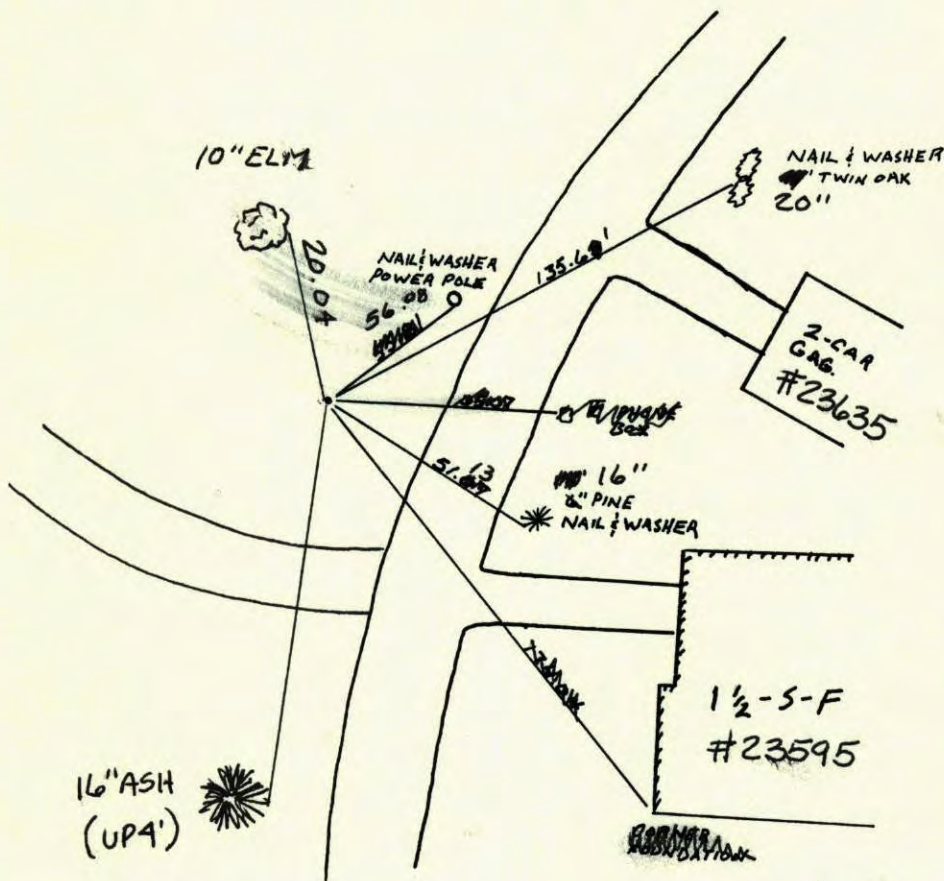
State of Minnesota

POINT ON EAST LINE Corner of Sec. 1 Township 32 Range 22
THE NE 1/4

I hereby certify that on the 3 day of August, 1964, I found the described corner which was evidenced by Don Hult's tie's

and I further certify that to perpetuate the location of said corner, I did, at the exact location thereof, place a permanent marker consisting of 1/2" iron pipe

which reference or witness monuments are located in the manner following:



Revised date
8-2-85
8-18-89
8-10-95
12-26-07

By
D. Ross

Minnesota State Plane Coordinates
South Zone

Y _____ X _____

County Surveyor

Date

Registered Land Surveyor No. _____

CERTIFICATE OF LOCATION OF GOVERNMENT CORNER

County of Anoka

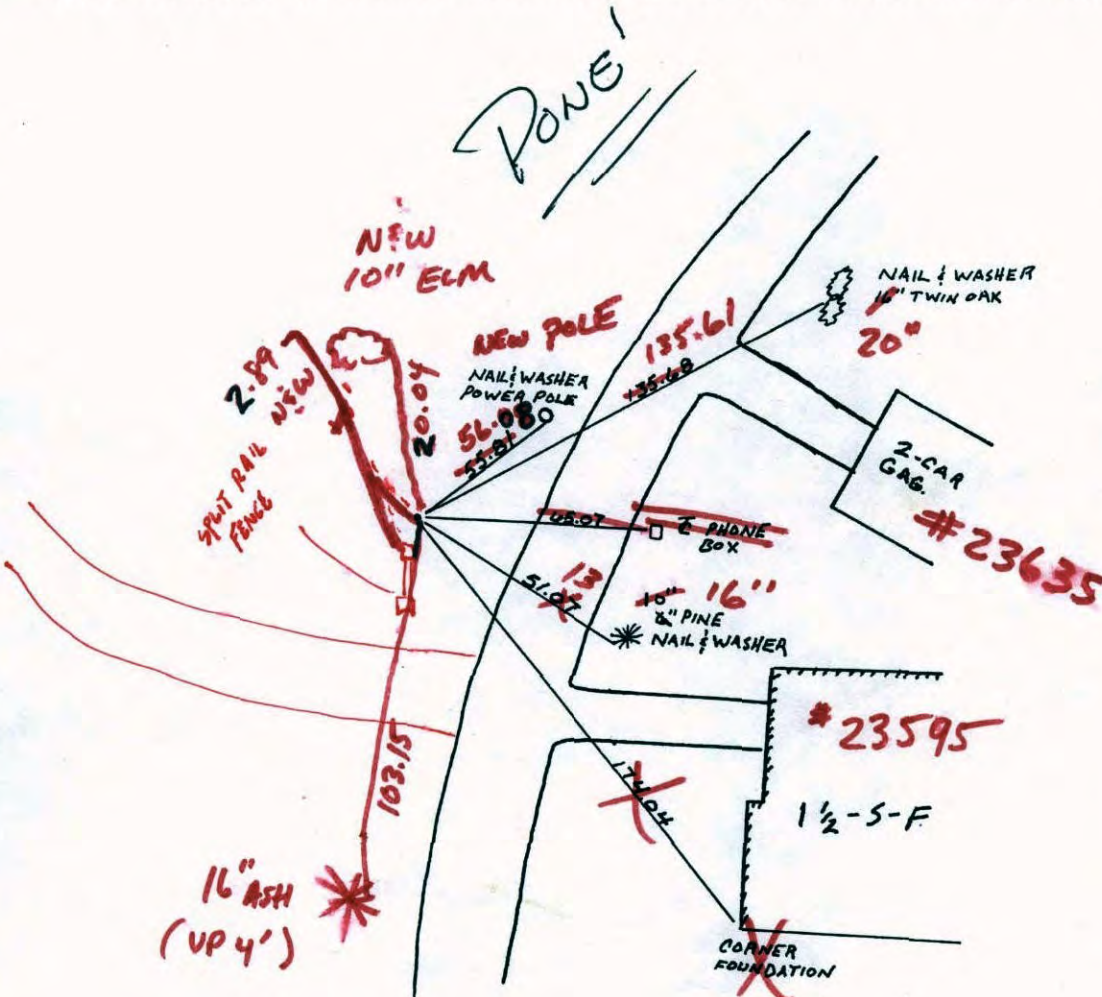
State of Minnesota

POINT ON EAST LINE Corner of Sec. 1 Township 32 Range 22
THE NE 1/4

I hereby certify that on the 3 day of August, 1964, I found the described corner which was evidenced by Don Hult's ties

and I further certify that to perpetuate the location of said corner, I did, at the exact location thereof, place a permanent marker consisting of 1/2" iron pipe

which reference or witness monuments are located in the manner following:



12-26-07
J.S. - S.S.

Revised date	By
8-2-85	D. Ross
8-18-89	
8-10-95	

Minnesota State Plane Coordinates
South Zone

Y _____ X _____

County Surveyor _____ Date _____
Registered Land Surveyor No. _____

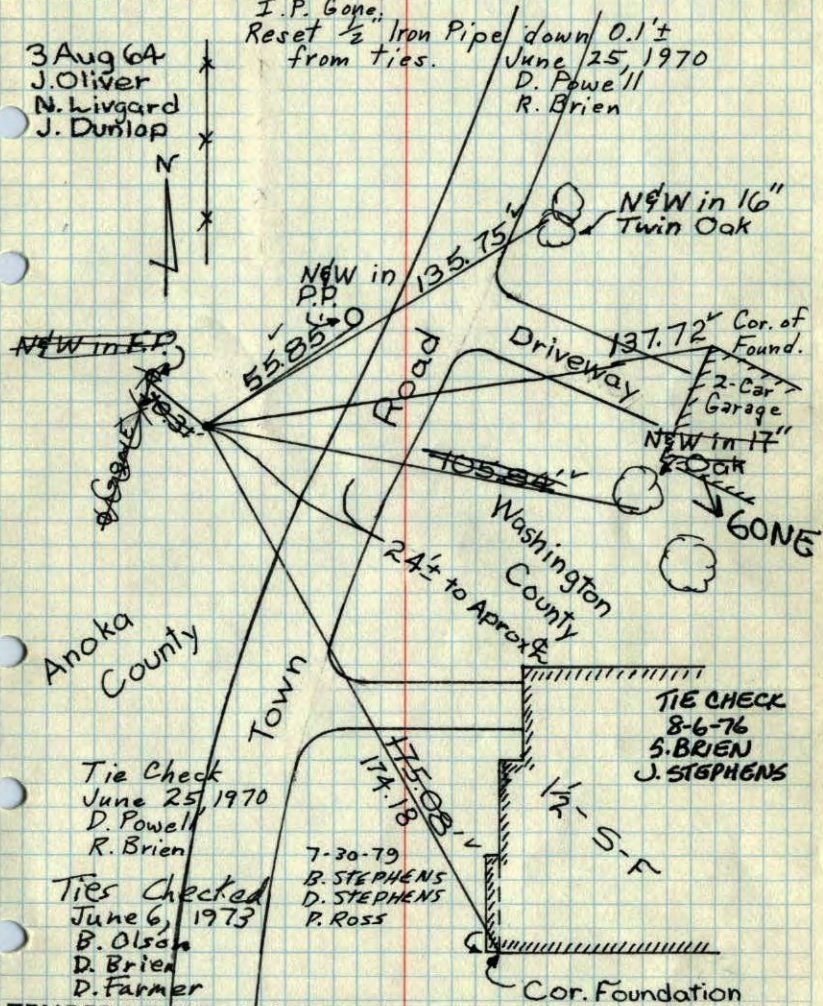
Point on E line NE 1/4 Sec. 1, T32, R22

Found 1/2" I.P., up 0.2' from Don Hults Ties.

500' Aprox. No. of 1/4 Cor.

3 Aug 64
J. Oliver
N. Livgard
J. Dunlop

I.P. Gone.
Reset 1/2" Iron Pipe down 0.1'±
from ties.
June 25, 1970
D. Powell
R. Brien



TIE CHECK
8-6-76
S. BRIEN
J. STEPHENS

Tie Check
June 25, 1970
D. Powell
R. Brien

Ties Checked
June 6, 1973
B. Olson
D. Brien
D. Farmer

TEMPERATURE CORRECTED
AND HORIZONTALLY
TAPED MEASUREMENTS

ROLAND W. ANDERSON
COUNTY SURVEYOR
ANOKA COUNTY, MINNESOTA

Point on E line NE 1/4 Sec. 1, T32, R22

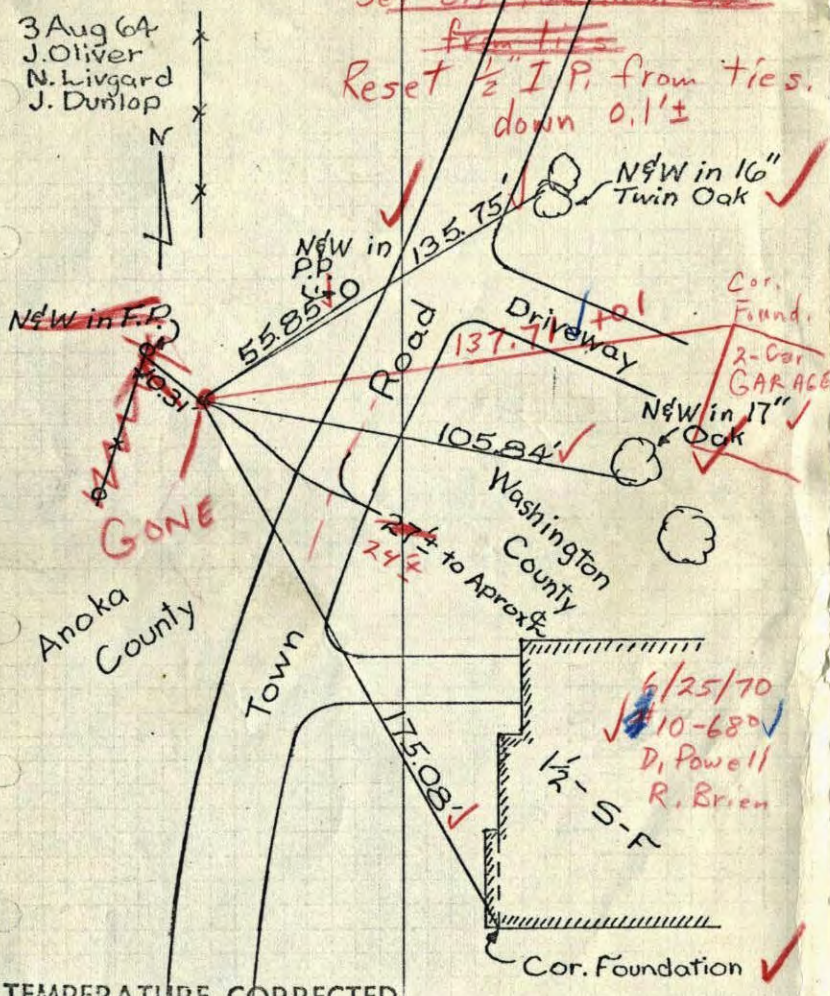
Found 1/2" I.P., up 0.2' from Don Hults Ties.

500' Aprox. No. of 1/4 Cor. I.P. GONE.

~~Set C.T. down 0.57'~~

3 Aug 64
J. Oliver
N. Livgard
J. Dunlop

~~from ties~~
Reset 1/2" I.P. from ties.
down 0.1'±



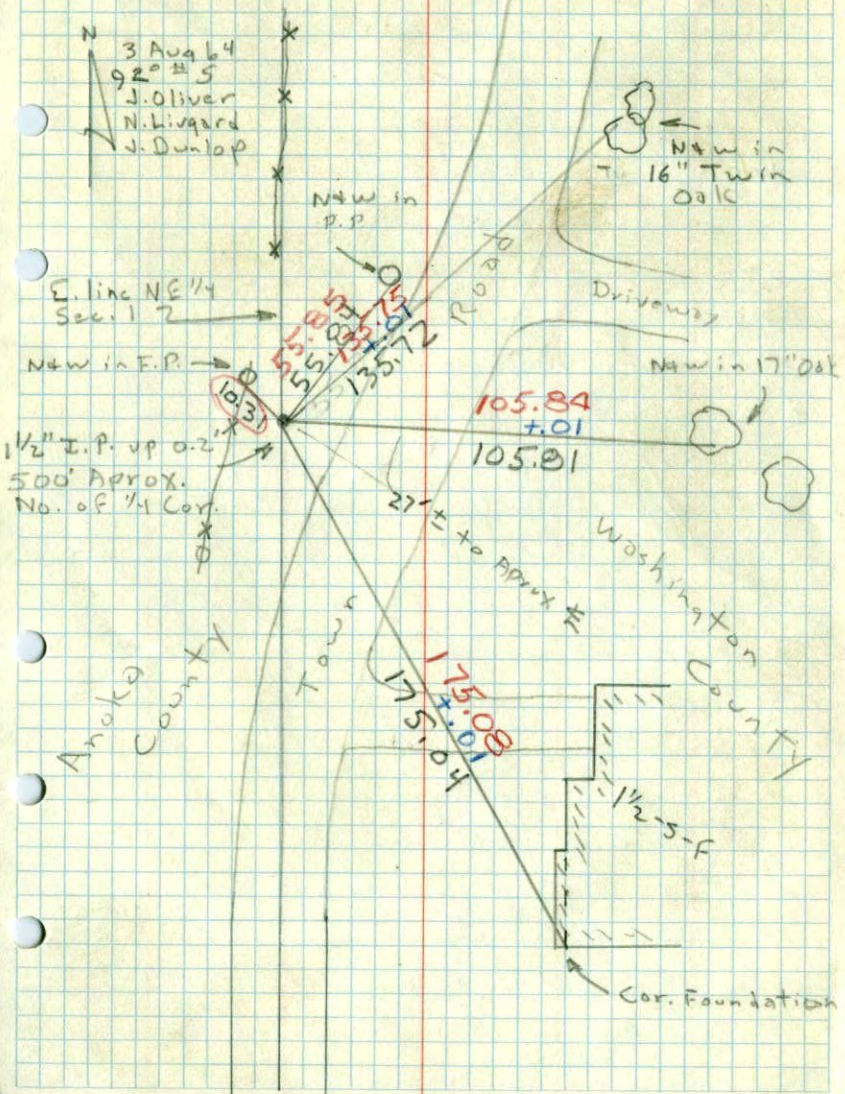
6/25/70
10-680
D. Powell
R. Brien

TEMPERATURE CORRECTED
AND HORIZONTALLY
TAPED MEASUREMENTS

ROLAND W. ANDERSON
COUNTY SURVEYOR
ANOKA COUNTY, MINNESOTA

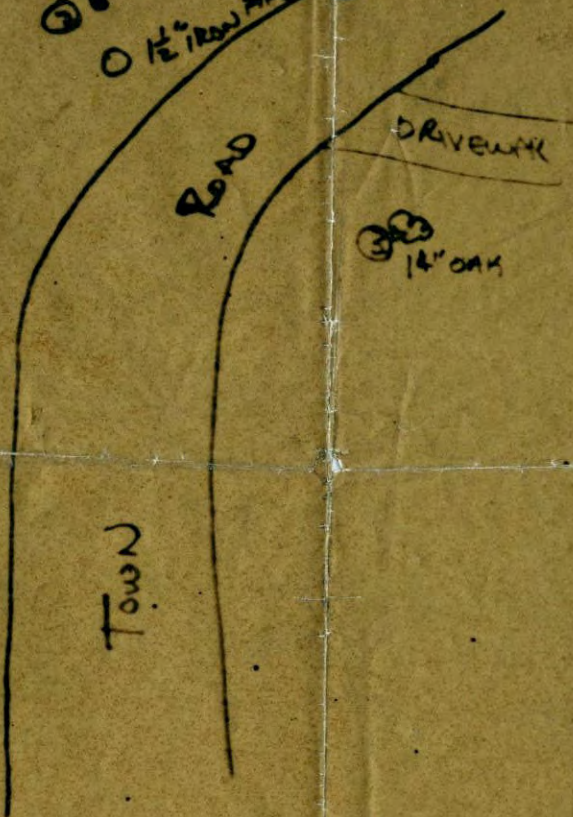
Point on E. line NE 1/4 Sec. 1, T32, R22

Found 1 1/2" I.P. up 0.2' from Don Hult's Ties.



Cor. on line N. of E 1/4 Cor 1-32-22

① P.P.
② 1/2" IRON PIPE
③ 14" OAK



- ① 55.87' P.P. (SELY side)
- ② 103.6' FE POST WITH SIGN ON.
- ③ 105.66' 14" OAK (SELY side)