

# CERTIFICATE OF LOCATION OF GOVERNMENT CORNER

County of Anoka

State of Minnesota

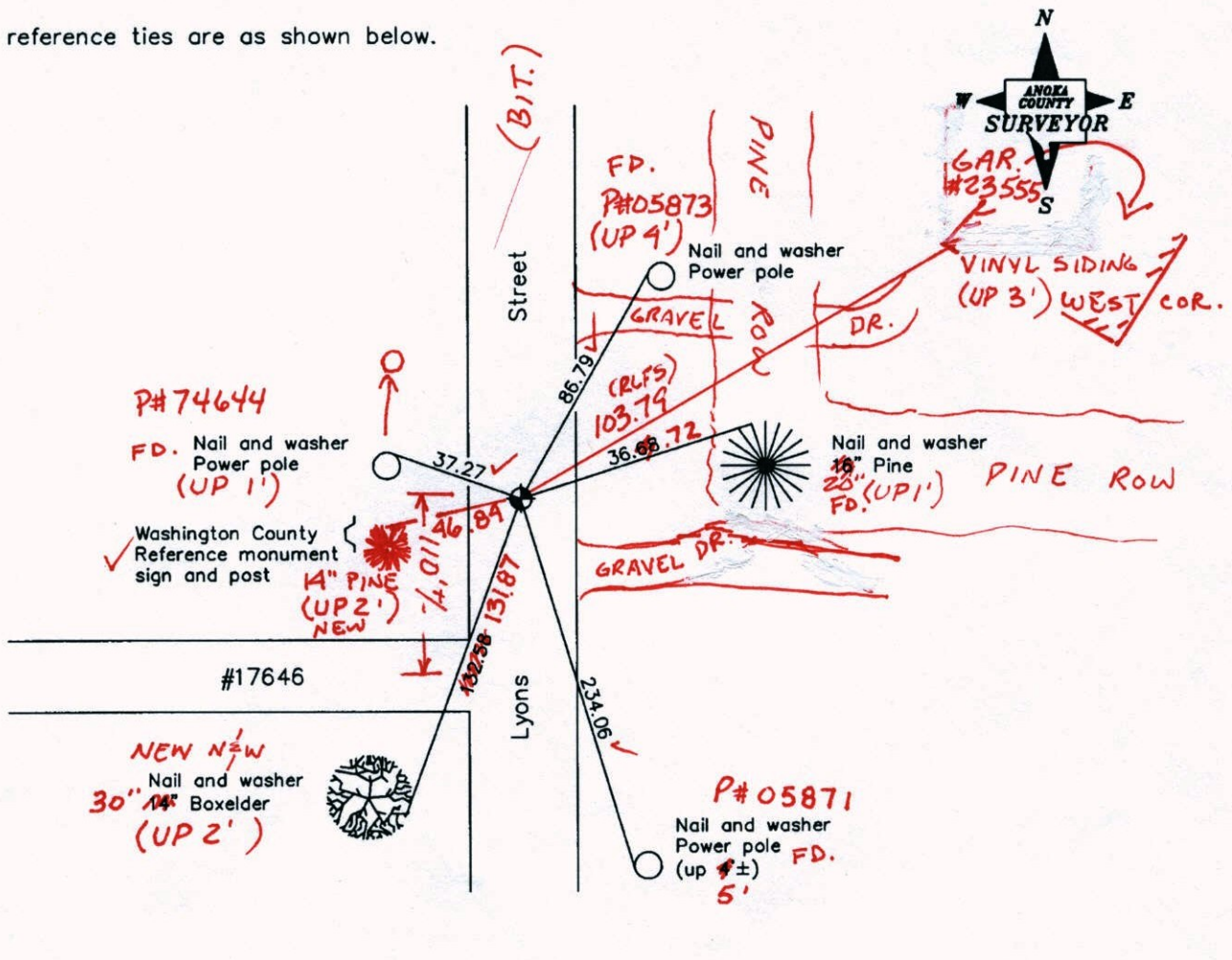
East 1/4 Corner of Sec. 1 Township 32 Range 22

On the 6th day of December, 1963, the described corner was evidenced by a 1-1/4" iron pipe

and to perpetuate the location of said corner, at the exact location thereof, a permanent marker was placed consisting of a cast iron monument (2' W. OF  $\odot$ )

AND on the 26th day of December, 2007, said permanent marker was found and the ties were updated

Updated reference ties are as shown below.



9-17-14  
BK-SS  
TOTAL STA.  
VRS

Revised date

8/18/89
8/10/95
12/26/07

3D=0.13

N.A.D. 1983 Coordinates  
(1996 Adjustment)

County Project Coordinates	
Northing	192958.8888
Easting	563612.4896
Date	6/18/03

N = 192958.8478

E = 563612.4658

I hereby certify that this United States public land survey monument record is correct and complete to the best of my knowledge and belief.

*Garry D. Hoium* Date 12/26/07  
Garry D. Hoium, Anoka County Surveyor  
Minnesota License Number 18165

# CERTIFICATE OF LOCATION OF GOVERNMENT CORNER

County of Anoka

State of Minnesota

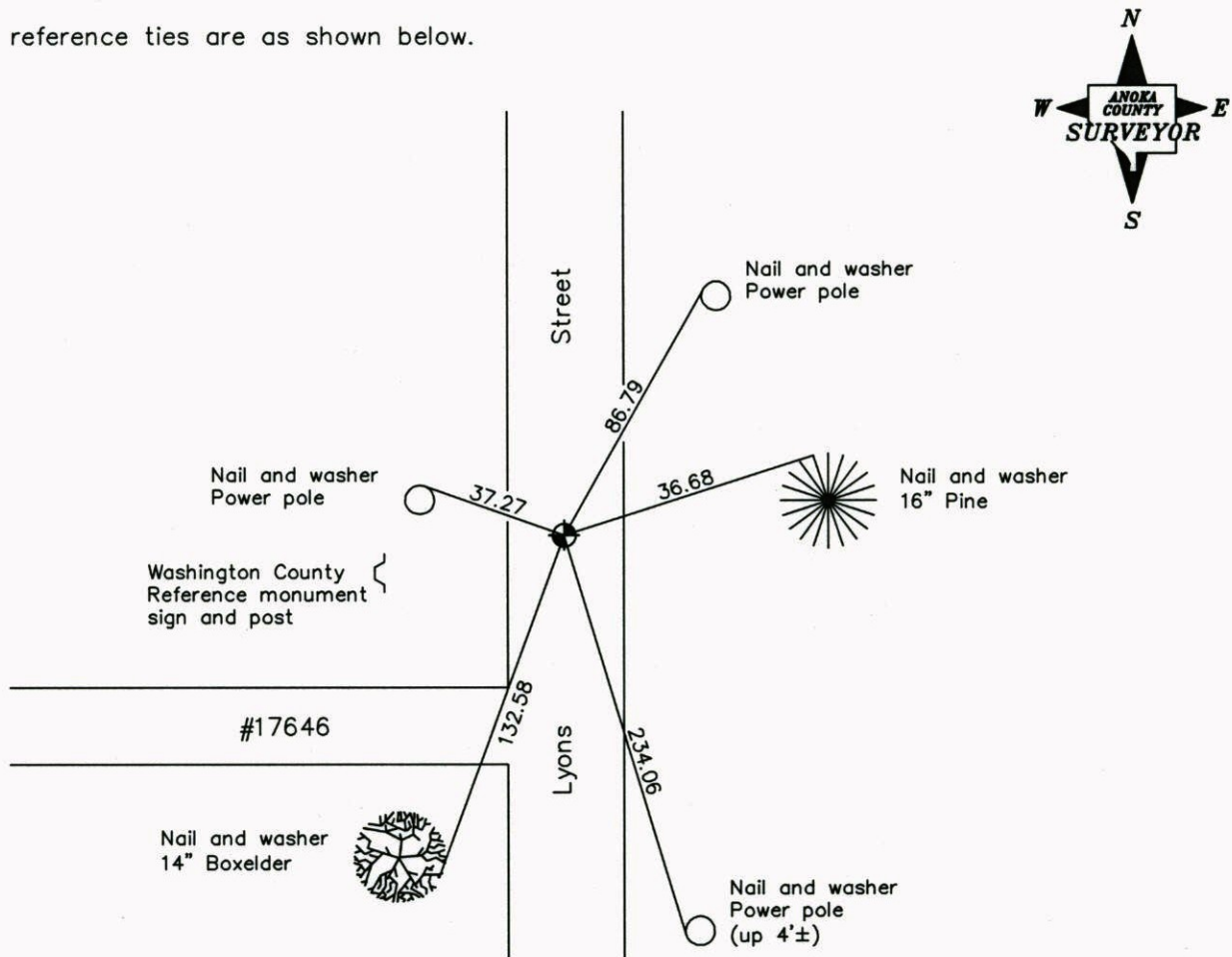
East 1/4 Corner of Sec. 1 Township 32 Range 22

On the 6th day of December, 1963, the described corner was evidenced by a 1-1/4" iron pipe

and to perpetuate the location of said corner, at the exact location thereof, a permanent marker was placed consisting of a cast iron monument

AND on the 26th day of December, 2007, said permanent marker was found and the ties were updated

Updated reference ties are as shown below.



**Revised date**

8/18/89
8/10/95
12/26/07

**N.A.D. 1983 Coordinates  
(1996 Adjustment)**

County Project Coordinates
Northing <u>192958.8888</u>
Easting <u>563612.4896</u>
Date <u>6/18/03</u>

I hereby certify that this United States public land survey monument record is correct and complete to the best of my knowledge and belief.

*(Signature)* Date 12/26/07  
 \_\_\_\_\_, Anoka County Surveyor  
 Minnesota License Number 18165

# CERTIFICATE OF LOCATION OF GOVERNMENT CORNER

County of Anoka

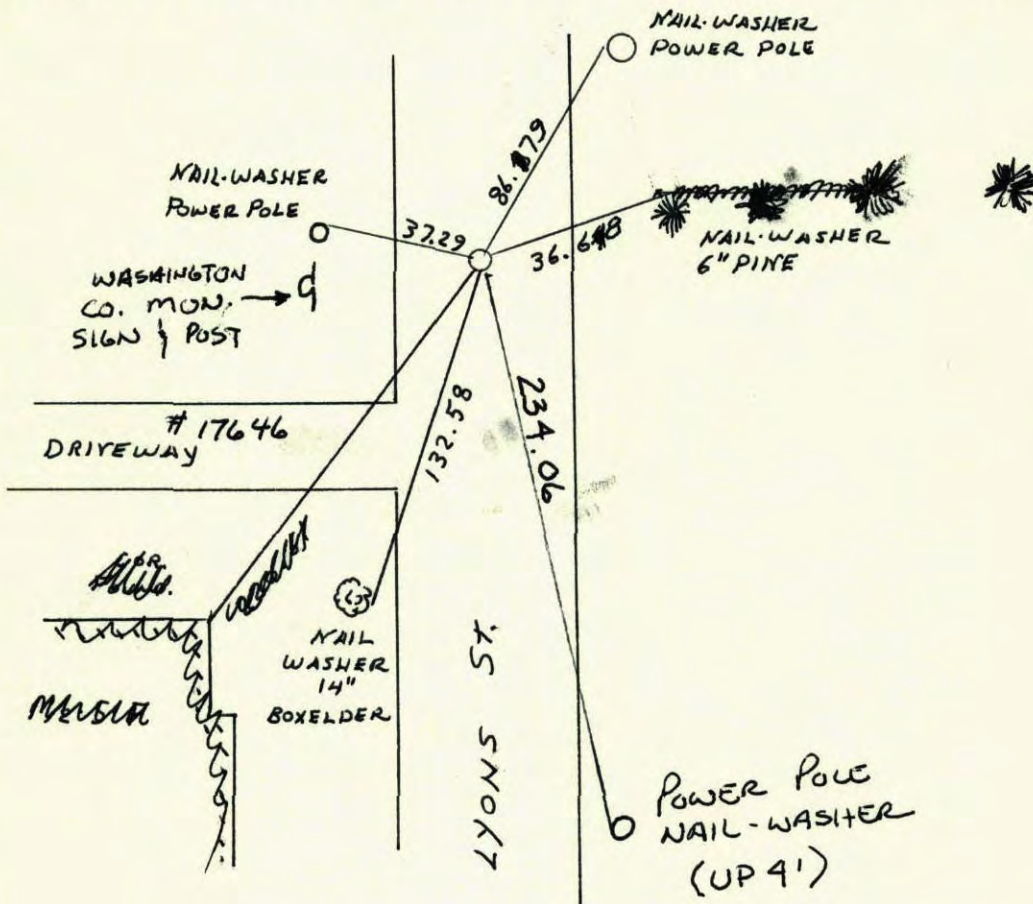
State of Minnesota

E 1/4 Corner of Sec. 1 Township 32 Range 22

I hereby certify that on the 6 day of DEC., 1963, I found the described corner which was evidenced by 1 1/4" IRON PIPE

and I further certify that to perpetuate the location of said corner, I did, at the exact location thereof, place a permanent marker consisting of CAST IRON MONUMENT  
P.K.s 2.00' NORTH AND EAST

which reference or witness monuments are located in the manner following:



Revised date
8-2-85
RAISED 84-86
REDRAWN 2-10-88
8-18-89
8-10-95
12-26-07

By
D. ROSS
H. LARSON
H. LARSON

Minnesota State Plane Coordinates  
South Zone  
Y \_\_\_\_\_ X \_\_\_\_\_  
\_\_\_\_\_  
County Surveyor Date  
Registered Land Surveyor No. \_\_\_\_\_

# CERTIFICATE OF LOCATION OF GOVERNMENT CORNER

County of Anoka

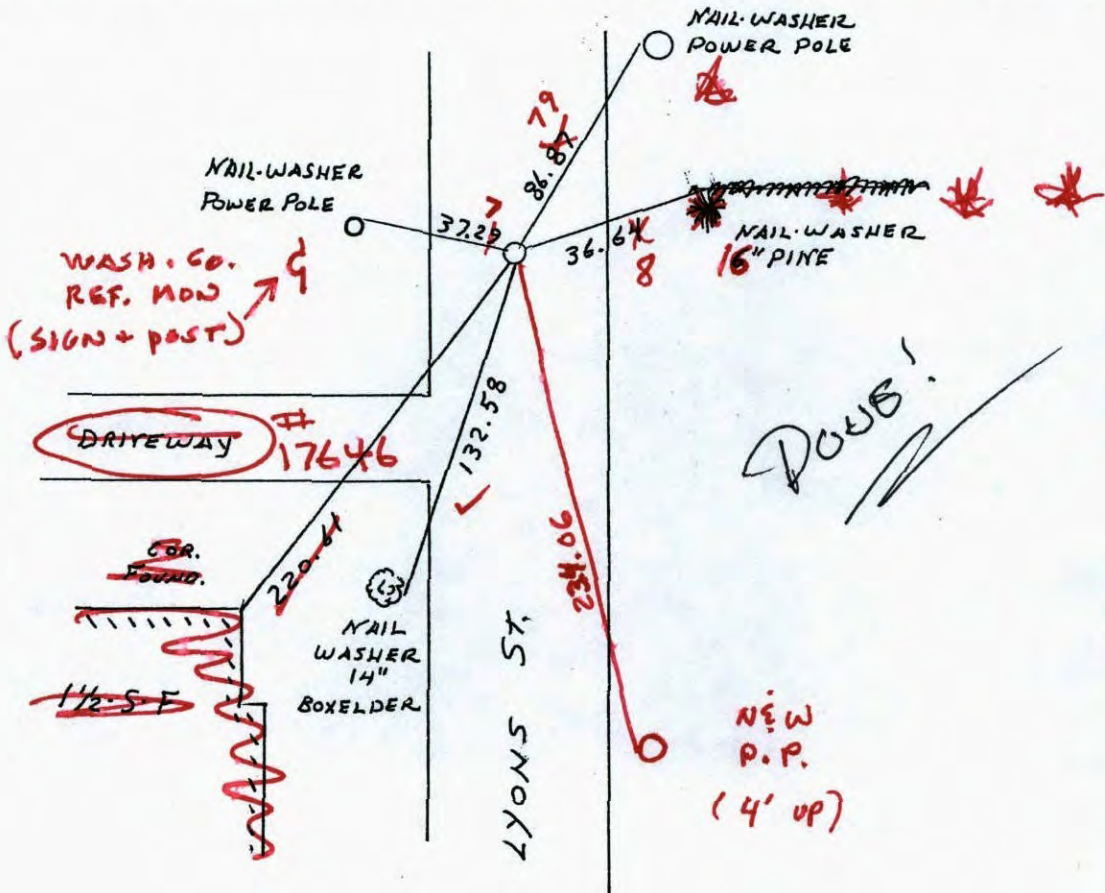
State of Minnesota

E 1/4 Corner of Sec. 1 Township 32 Range 22

I hereby certify that on the 6 day of DEC., 1963, I found the described corner which was evidenced by 1 1/4" IRON PIPE

and I further certify that to perpetuate the location of said corner, I did, at the exact location thereof, place a permanent marker consisting of CAST IRON MONUMENT PKs 2.00' NORTH AND EAST

which reference or witness monuments are located in the manner following:



DOUB!

12-26-07  
JS S.S.

NEW P.P. (4' up)

Revised date

By

8-2-85
RAISED 8-86
REDRAWN 2-10-88
8-18-89
8-10-95

D. ROSS
H. LARSON
H. LARSON

Minnesota State Plane Coordinates South Zone

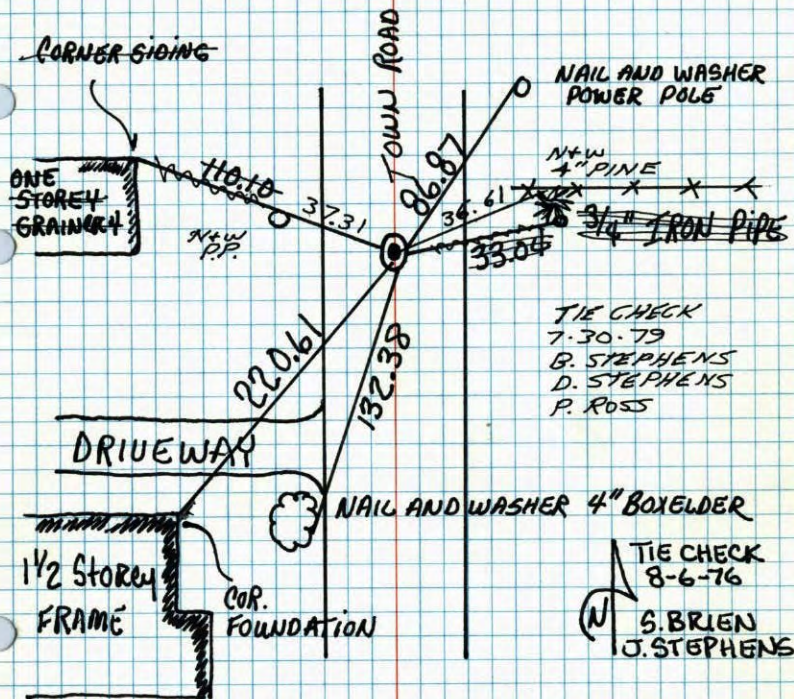
Y \_\_\_\_\_ X \_\_\_\_\_

County Surveyor \_\_\_\_\_ Date \_\_\_\_\_

Registered Land Surveyor No. \_\_\_\_\_

E 1/4 CORNER SEC. 1 T. 32 R. 22

WASHINGTON COUNTY SET CAST IRON MONUMENT  
IN PLACE, DOWN 0.4'± (SET ON 9-22-69)



TIE CHECK  
7-30-79  
B. STEPHENS  
D. STEPHENS  
P. ROSS

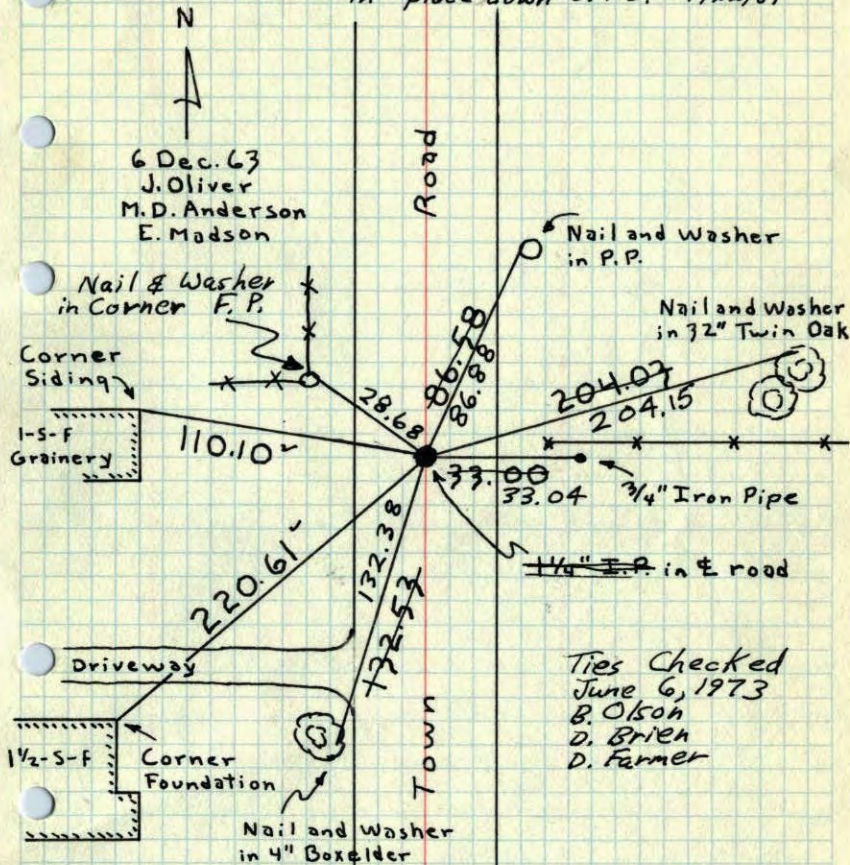
TIE CHECK  
8-6-76  
S. BRIEN  
J. STEPHENS

TEMPERATURE CORRECTED  
AND HORIZONTALLY  
TAPED MEASUREMENTS

ROLAND W. ANDERSON  
COUNTY SURVEYOR  
ANOKA COUNTY, MINNESOTA

E 1/4 Cor. Sec. 1, T32, R22

Found 1 1/4" I.P. down 0.1' from Don Hults ties.  
Washington County Cast Iron Monument  
in place down 0.4'±. 9/22/69



Ties Checked  
June 6, 1973  
B. Olson  
D. Brien  
D. Farmer

TEMPERATURE CORRECTED  
AND HORIZONTALLY  
TAPED MEASUREMENTS

ROLAND W. ANDERSON  
COUNTY SURVEYOR  
ANOKA COUNTY, MINNESOTA

SEE NEW  
TIES

E 1/4 Cor. Sec. 1, T32, R 22

Found 1 1/4" I.P. down 0.1' from Don Hults

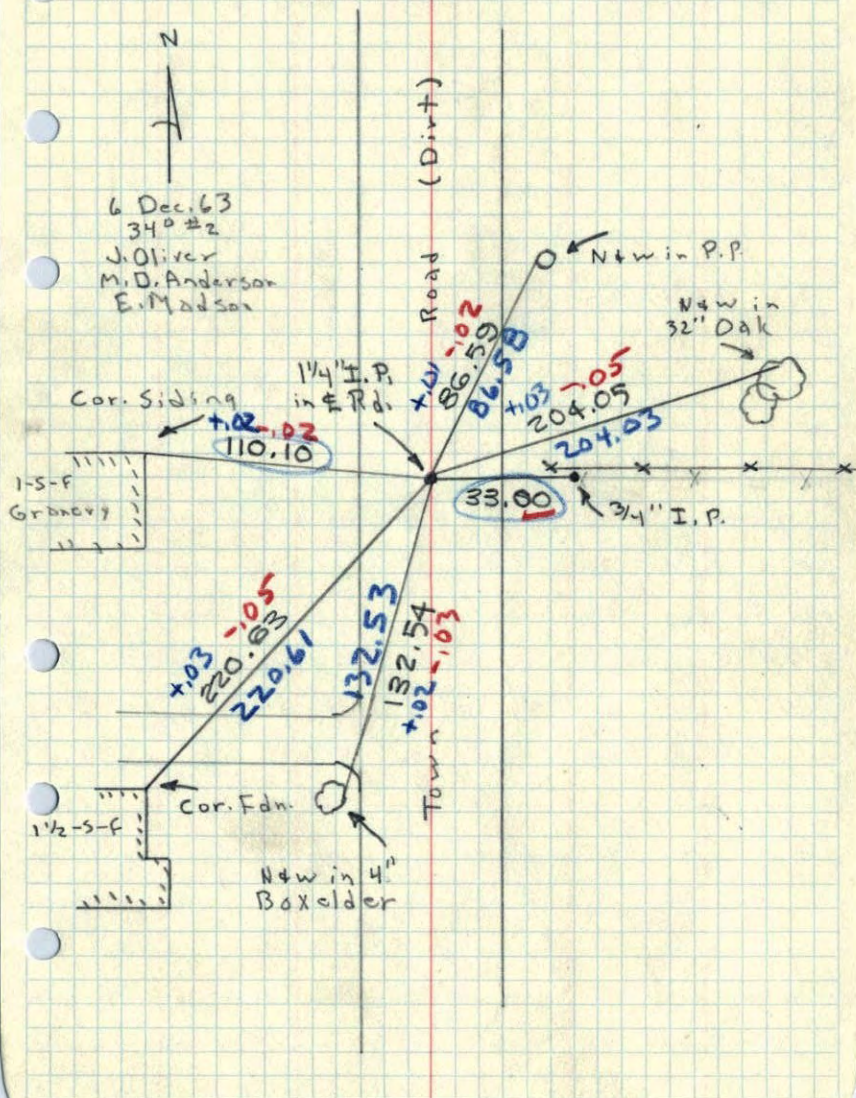
ties.

N

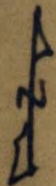


6 Dec. 63  
34<sup>th</sup> #2

J. Oliver  
M. D. Anderson  
E. Madson



E 1/4 COR SEC. 1-32-22



Don't  
Have

Tied  
6 Dec, 63

DRIVEWAY

ROAD

TOWN

0 1/4" I.P.

- ① 34.62' FB. POST (S. SIDE)
- ② 86.66' P.P. (N.W. SIDE)
- ③ 132.62' 4" Boxelder (E. L. Sides)