

CERTIFICATE OF LOCATION OF GOVERNMENT CORNER
 County of Anoka State of Minnesota
Northeast Corner of Sec. 12 Township 32 Range 22

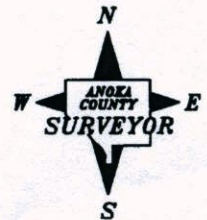
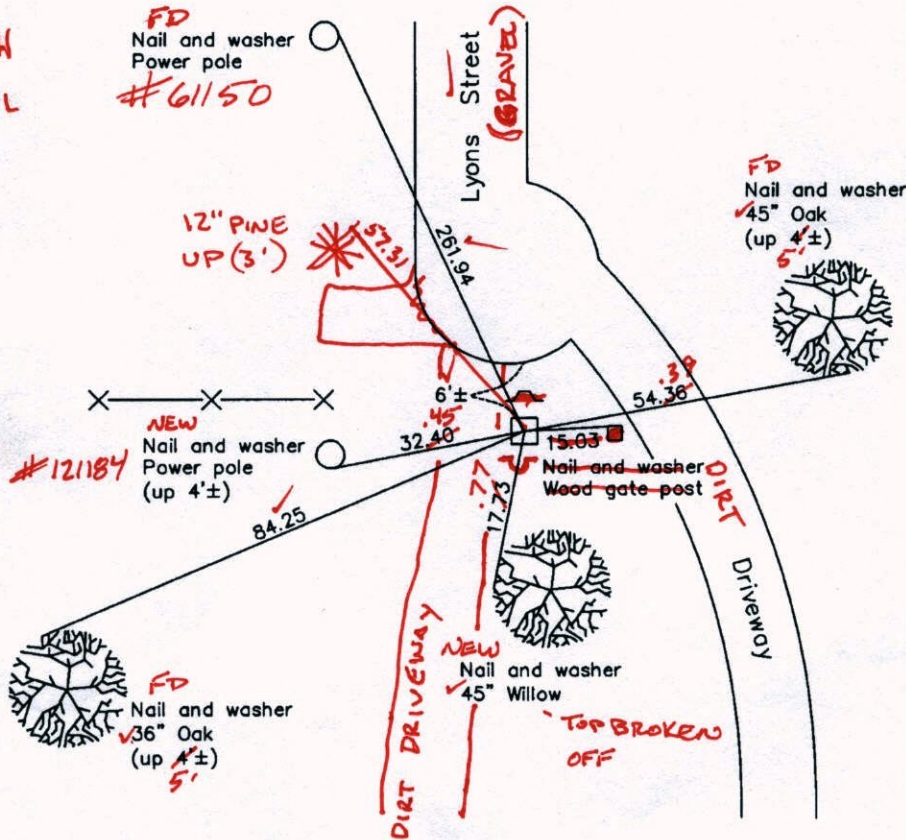
On the 25th day of July, 1960, the described corner was evidenced by a sandstone monument

and to perpetuate the location of said corner, at the exact location thereof, a permanent marker was placed consisting of the same sandstone monument with a sign and post on the south side

AND on the 4th day of January, 2008, said permanent marker was found 1'± down with a sign and post 0.5' ~~North~~ South

Updated reference ties are as shown below.

9-23-14 JS SH
 TIES W/ TOTAL
 STATION
 UNABLE TO
 VRS.



Revised date
8/18/89
8/10/95
1/04/08

N.A.D. 1983 Coordinates (1996 Adjustment)	
County Project Coordinates	
Northing	190363.6086
Easting	563625.5767
Date	6/18/03

I hereby certify that this United States public land survey monument record is correct and complete to the best of my knowledge and belief.

Larry D. Hoium Date 1/04/08
 Larry D. Hoium, Anoka County Surveyor
 Minnesota License Number 18165

CERTIFICATE OF LOCATION OF GOVERNMENT CORNER

County of Anoka

State of Minnesota

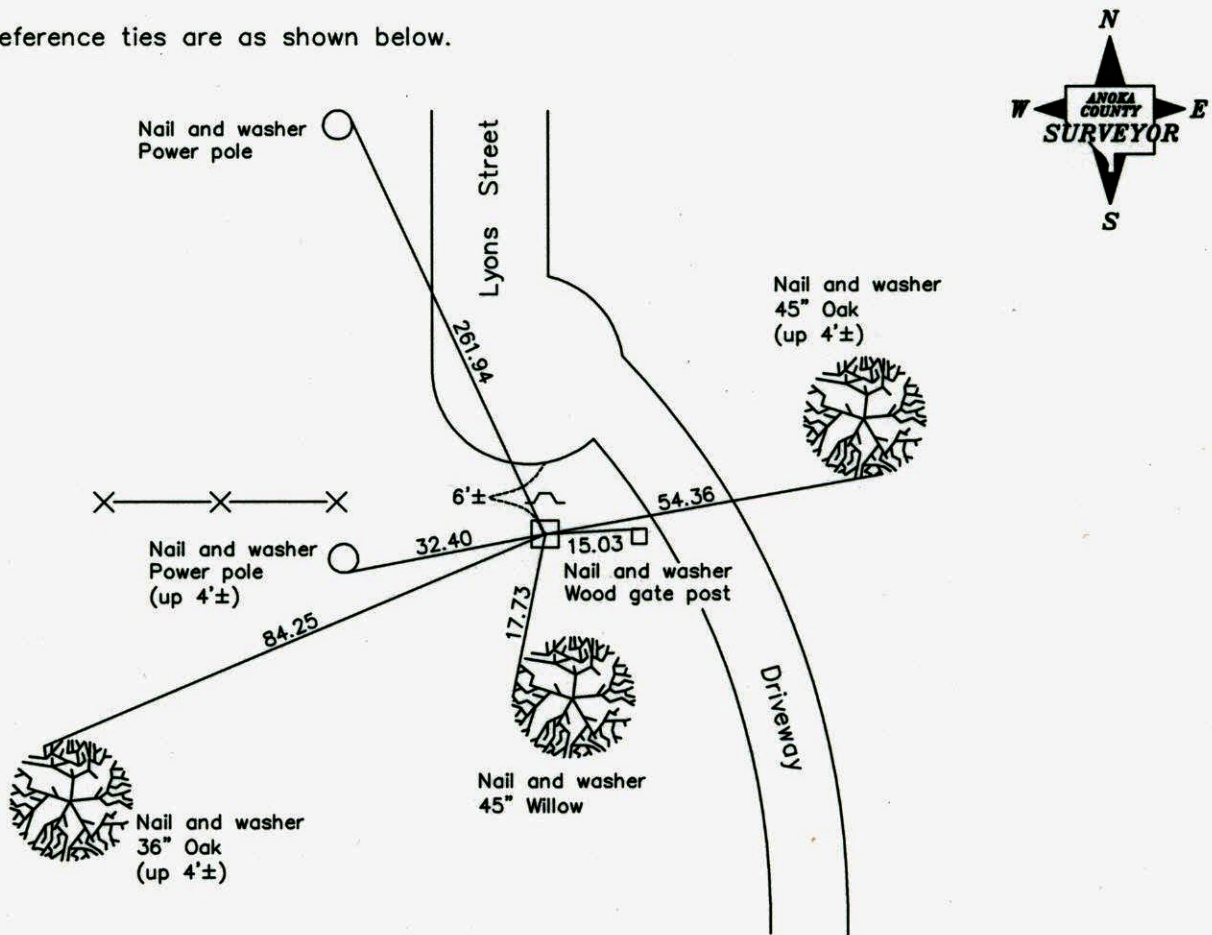
Northeast Corner of Sec. 12 Township 32 Range 22

On the 25th day of July, 1960, the described corner was evidenced by a sandstone monument

and to perpetuate the location of said corner, at the exact location thereof, a permanent marker was placed consisting of the same sandstone monument with a sign and post on the south side

AND on the 4th day of January, 2008, said permanent marker was found 1'± down with a sign and post 0.5' north

Updated reference ties are as shown below.



Revised date
8/18/89
8/10/95
1/04/08

N.A.D. 1983 Coordinates (1996 Adjustment)	
County Project Coordinates	
Northing	<u>190363.6086</u>
Easting	<u>563625.5767</u>
Date	<u>6/18/03</u>

I hereby certify that this United States public land survey monument record is correct and complete to the best of my knowledge and belief.

Larry D. Hoium Date 1/04/08

Larry D. Hoium, Anoka County Surveyor

Minnesota License Number 18165

SHOT GPS 6-18-03

CERTIFICATE OF LOCATION OF GOVERNMENT CORNER

County of Anoka

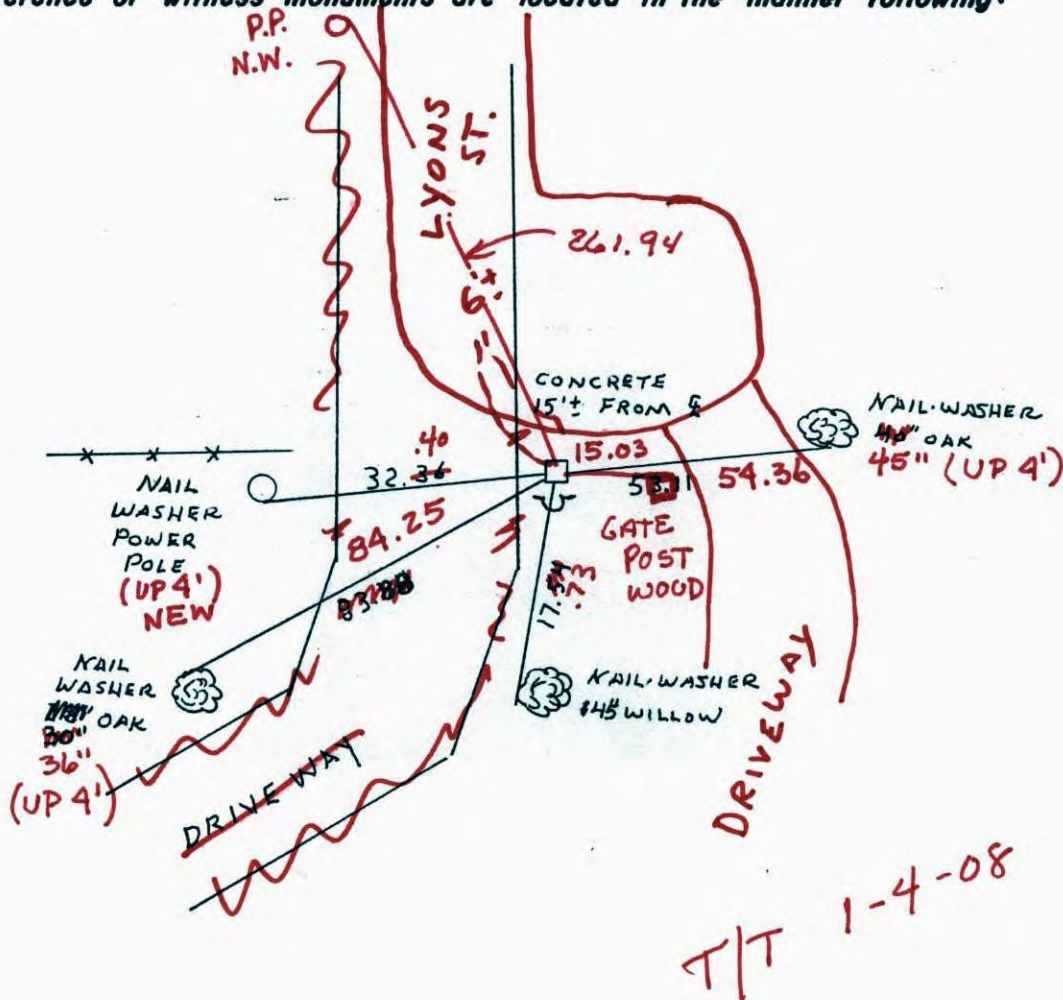
State of Minnesota

NORTHEAST Corner of Sec. 12 Township 32 Range 22

I hereby certify that on the 25 day of JULY, 1960, I found the described corner which was evidenced by FOUND SANDSTONE MONUMENT

and I further certify that to perpetuate the location of said corner, I did, at the exact location thereof, place a permanent marker consisting of SAME

SIGN AND POST ON SOUTH SIDE (MON DOWN 1' +/- SIGN NORTH OF MON .5')
which reference or witness monuments are located in the manner following:



Revised date
8-2-85
REDRAWN 2-10-88
8-18-89
8-10-95

By
D. ROSS
H. LARSON

Minnesota State Plane Coordinates
South Zone

Y _____ X _____

County Surveyor

Date

Registered Land Surveyor No. _____

T/T 1-4-08

CERTIFICATE OF LOCATION OF GOVERNMENT CORNER

County of Anoka

State of Minnesota

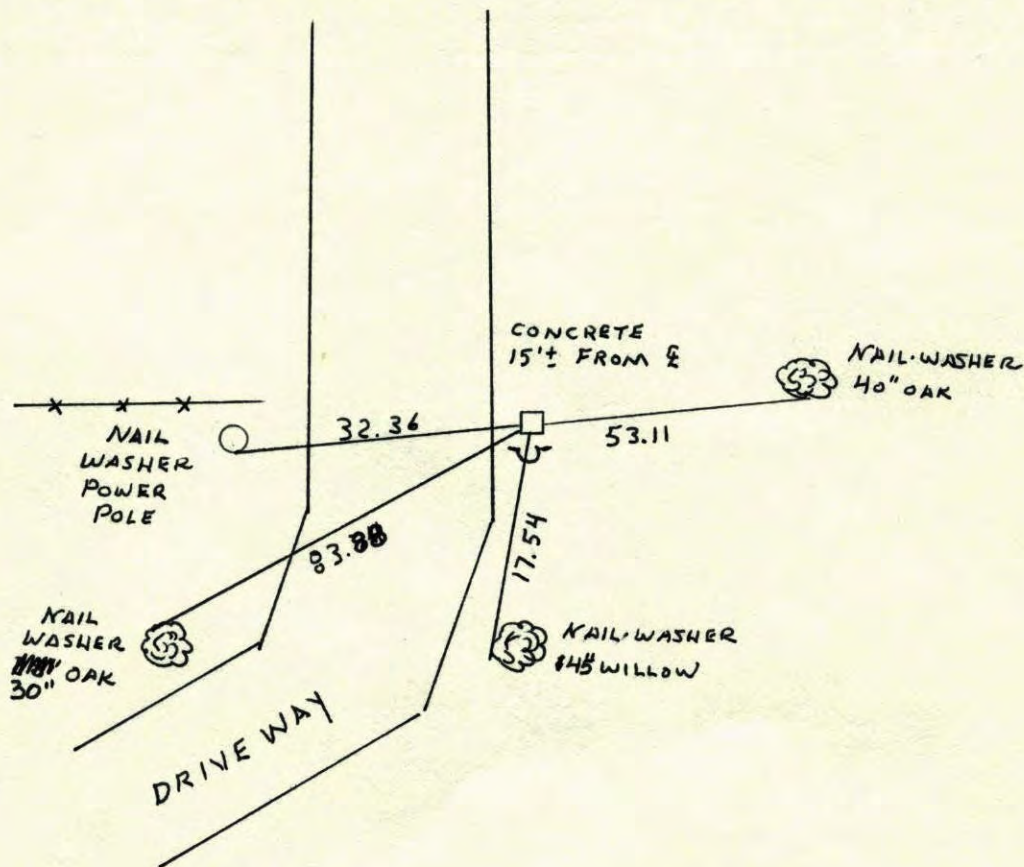
NORTHEAST Corner of Sec. 12 Township 32 Range 22

I hereby certify that on the 25 day of JULY, 1960, I found the described corner which was evidenced by FOUND SANDSTONE MONUMENT

and I further certify that to perpetuate the location of said corner, I did, at the exact location thereof, place a permanent marker consisting of SAME

SIGN AND POST ON SOUTH SIDE

which reference or witness monuments are located in the manner following:



Revised date
8-2-85
REDRAWN 2-10-88
8-18-89
8-10-95

By
D. ROSS
H. LARSON

Minnesota State Plane Coordinates
South Zone

Y _____ X _____

County Surveyor _____

Date _____

Registered Land Surveyor No. _____

