

CERTIFICATE OF LOCATION OF GOVERNMENT CORNER

County of Anoka

State of Minnesota

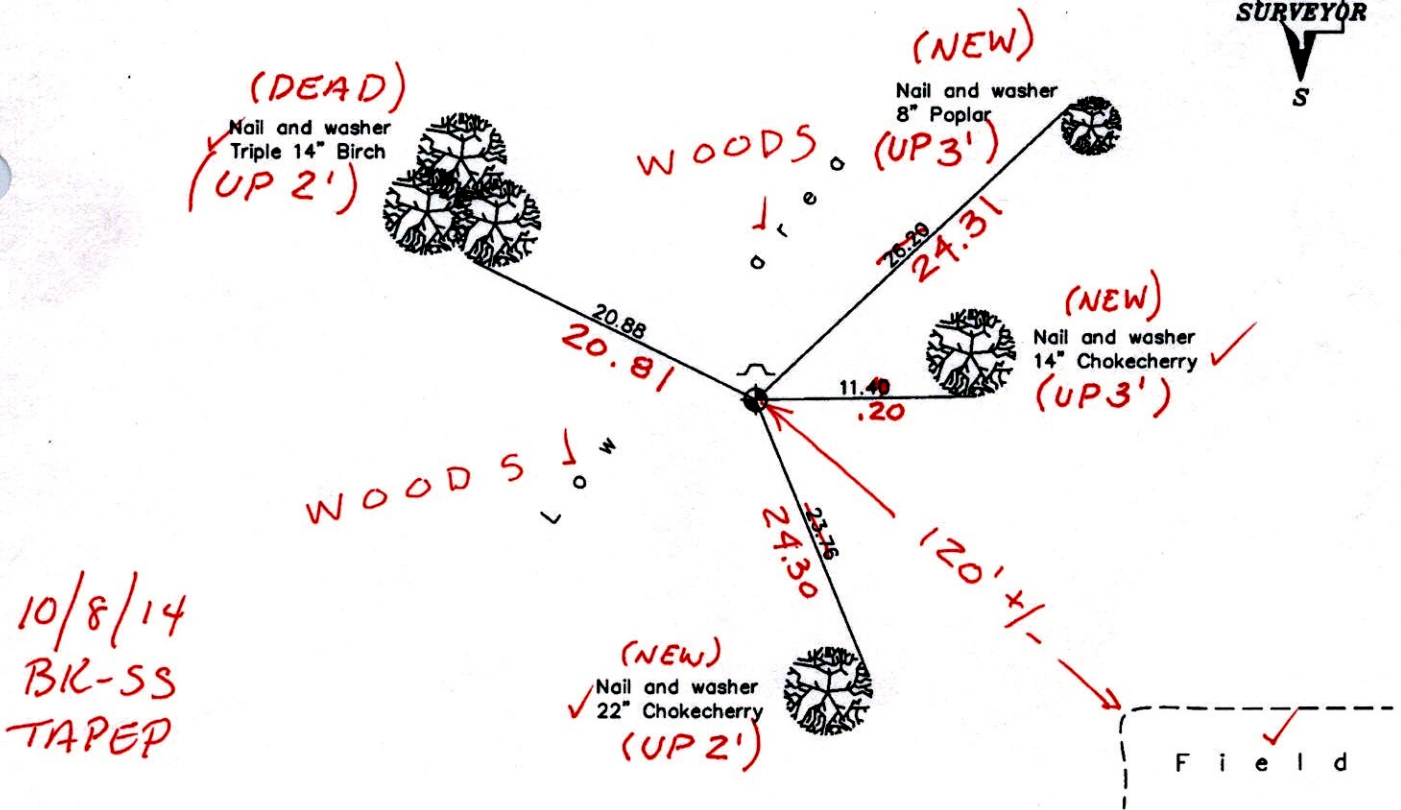
South 1/4 Corner of Sec. 1 Township 32 Range 22

On the 27th day of December, 1968, the described corner was evidenced by a 3/4" iron pipe
(MON. UP 0.2' +/-)

and to perpetuate the location of said corner, at the exact location thereof, a permanent marker was placed consisting of a cast iron monument with a sign and post on the north side

AND on the 20th day of April, 2005, said permanent marker was found and the ties were updated

Updated reference ties are as shown below.



10/8/14
 BK-SS
 TAPE

| Revised date |
|--------------|
| 6/14/90 |
| 8/10/95 |
| 4/20/05 |
| |
| |

| N.A.D. 1983 Coordinates (1996 Adjustment) | |
|--|-------------|
| County Project Coordinates | |
| Northing | 190383.3310 |
| Easting | 561008.8283 |
| Date | 4/20/05 |

I hereby certify that this United States public land survey monument record is correct and complete to the best of my knowledge and belief.

Larry D. Hoium Date 4/20/05

Larry D. Hoium, Anoka County Surveyor

Minnesota License Number 18165

CERTIFICATE OF LOCATION OF GOVERNMENT CORNER

County of Anoka

State of Minnesota

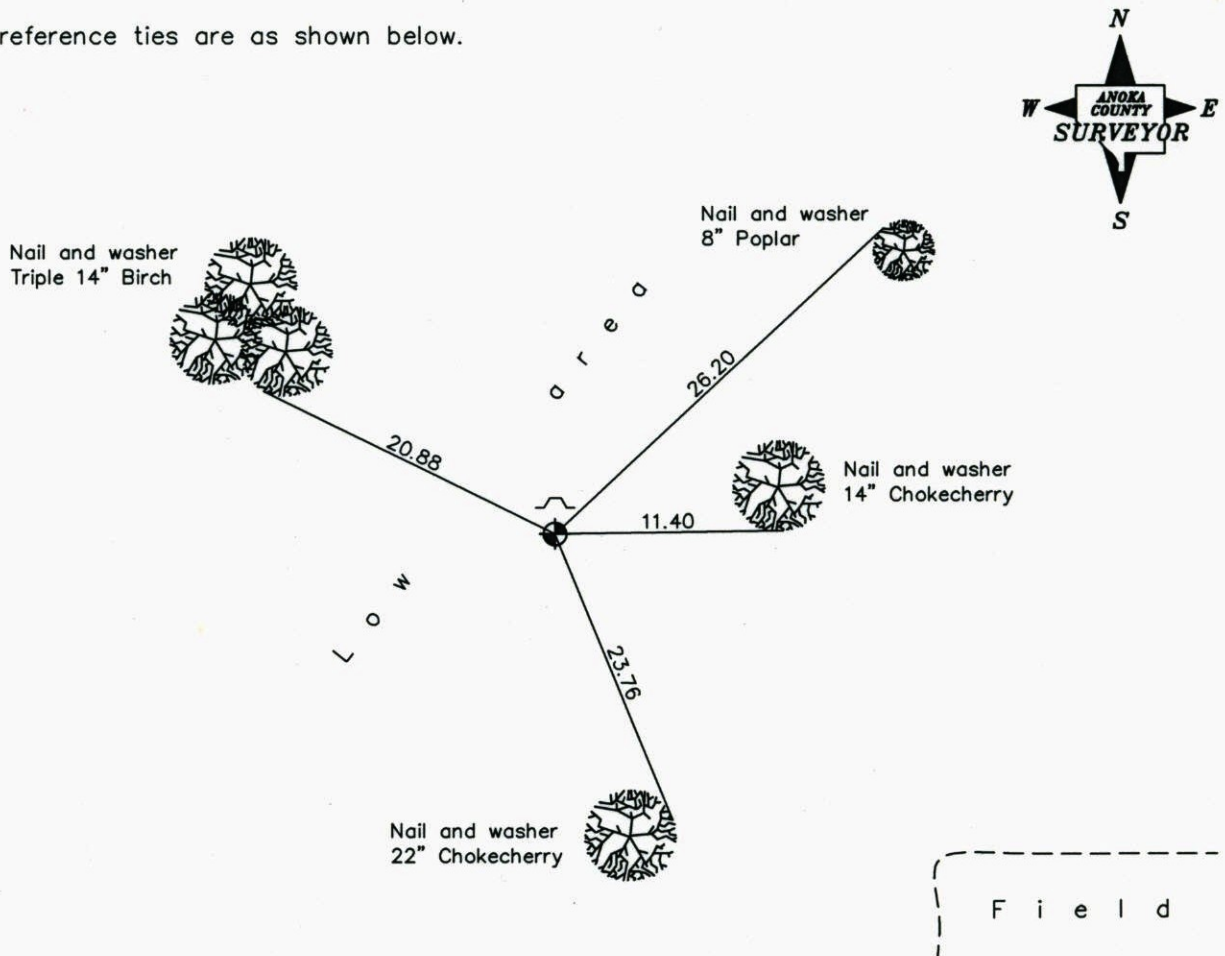
South 1/4 Corner of Sec. 1 Township 32 Range 22

On the 27th day of December, 1968, the described corner was evidenced by a 3/4" iron pipe

and to perpetuate the location of said corner, at the exact location thereof, a permanent marker was placed consisting of a cast iron monument with a sign and post on the north side

AND on the 20th day of April, 2005, said permanent marker was found and the ties were updated

Updated reference ties are as shown below.



| Revised date |
|--------------|
| 6/14/90 |
| 8/10/95 |
| 4/20/05 |
| |
| |

| N.A.D. 1983 Coordinates (1996 Adjustment) | |
|--|--------------------|
| County Project Coordinates | |
| Northing | <u>190383.3310</u> |
| Easting | <u>561008.8283</u> |
| Date | <u>4/20/05</u> |

I hereby certify that this United States public land survey monument record is correct and complete to the best of my knowledge and belief.

Date 4/20/05
Larry D. Hoium, Anoka County Surveyor
 Minnesota License Number 18165

CERTIFICATE OF LOCATION OF GOVERNMENT CORNER

County of Anoka

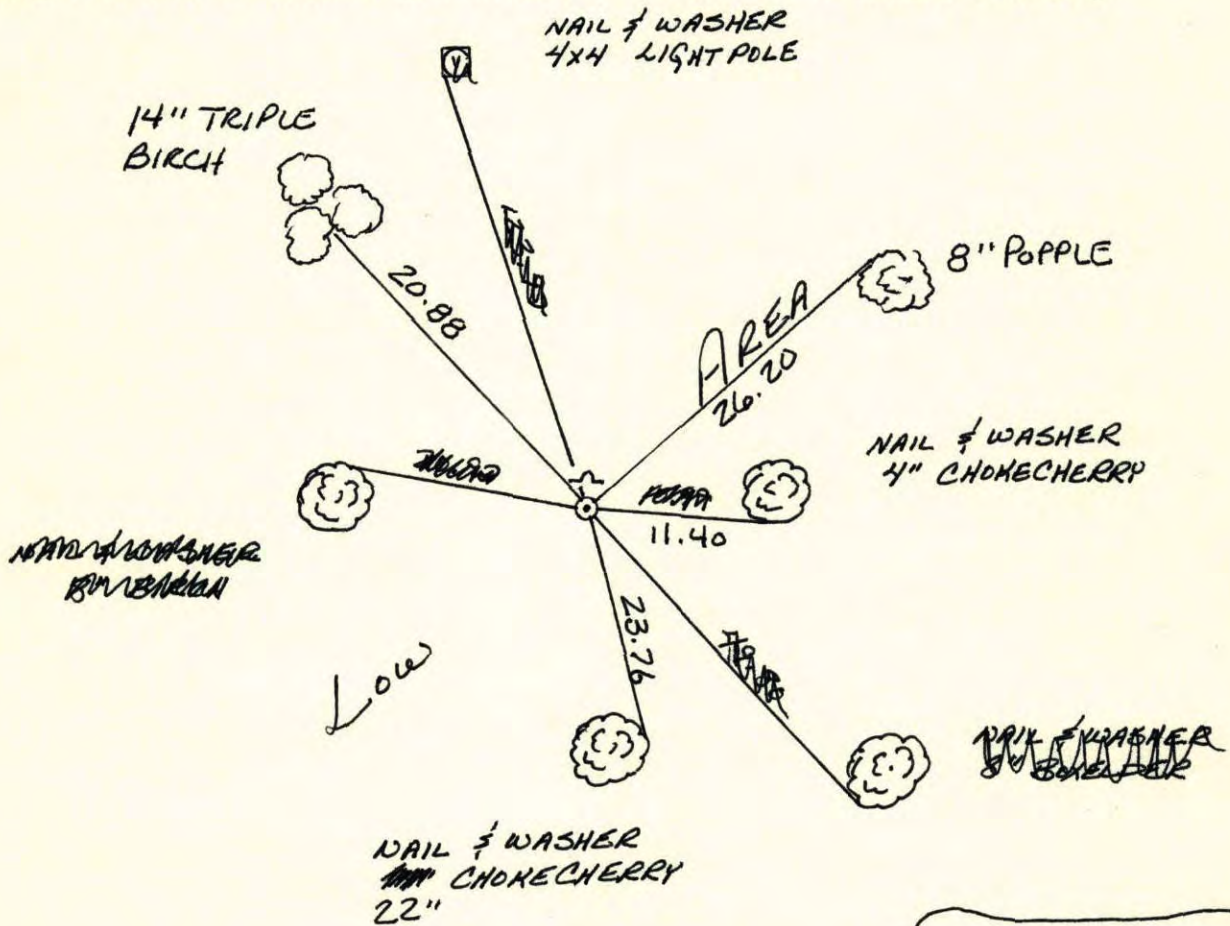
State of Minnesota

SOUTH 1/4 Corner of Sec. 1 Township 32 Range 22

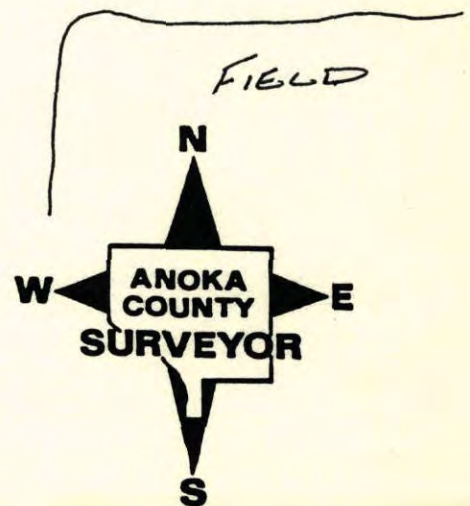
I hereby certify that on the 27 day of DECEMBER, 1968, I found the described corner which was evidenced by A 3/4" IRON PIPE

and I further certify that to perpetuate the location of said corner, I did, at the exact location thereof, place a permanent marker consisting of CAST IRON MONUMENT WITH SIGN AND POST ON THE NORTH SIDE

which reference or witness monuments are located in the manner following:



| Revised date | Revised date | Revised date |
|--------------|-----------------|--------------|
| 8-4-86 | | |
| 6-14-90 | | |
| 8-10-95 | | |
| 4-20-05 | GPS'D & RET IED | |
| | | |
| | | |
| | | |



~~SHOT GPS 5-17-04~~

CERTIFICATE OF LOCATION OF GOVERNMENT CORNER

County of Anoka

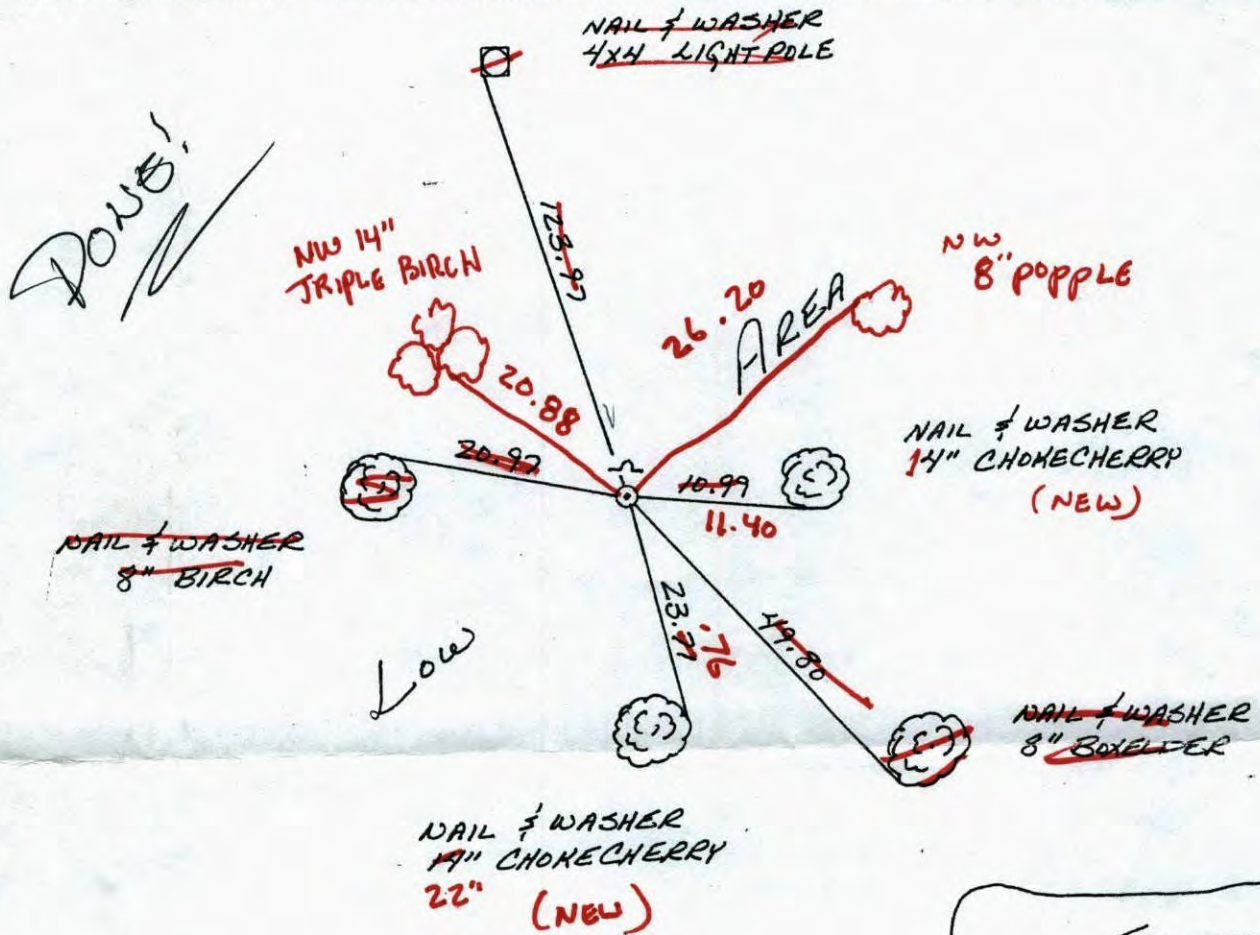
State of Minnesota

SOUTH 1/4 Corner of Sec. 1 Township 32 Range 22

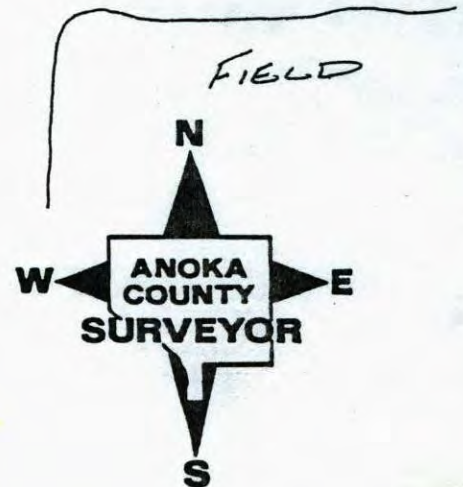
I hereby certify that on the 27 day of DECEMBER, 1968, I found the described corner which was evidenced by A 3/4" IRON PIPE

and I further certify that to perpetuate the location of said corner, I did, at the exact location thereof, place a permanent marker consisting of CAST IRON MONUMENT WITH SIGN AND POST ON THE NORTH SIDE

which reference or witness monuments are located in the manner following:

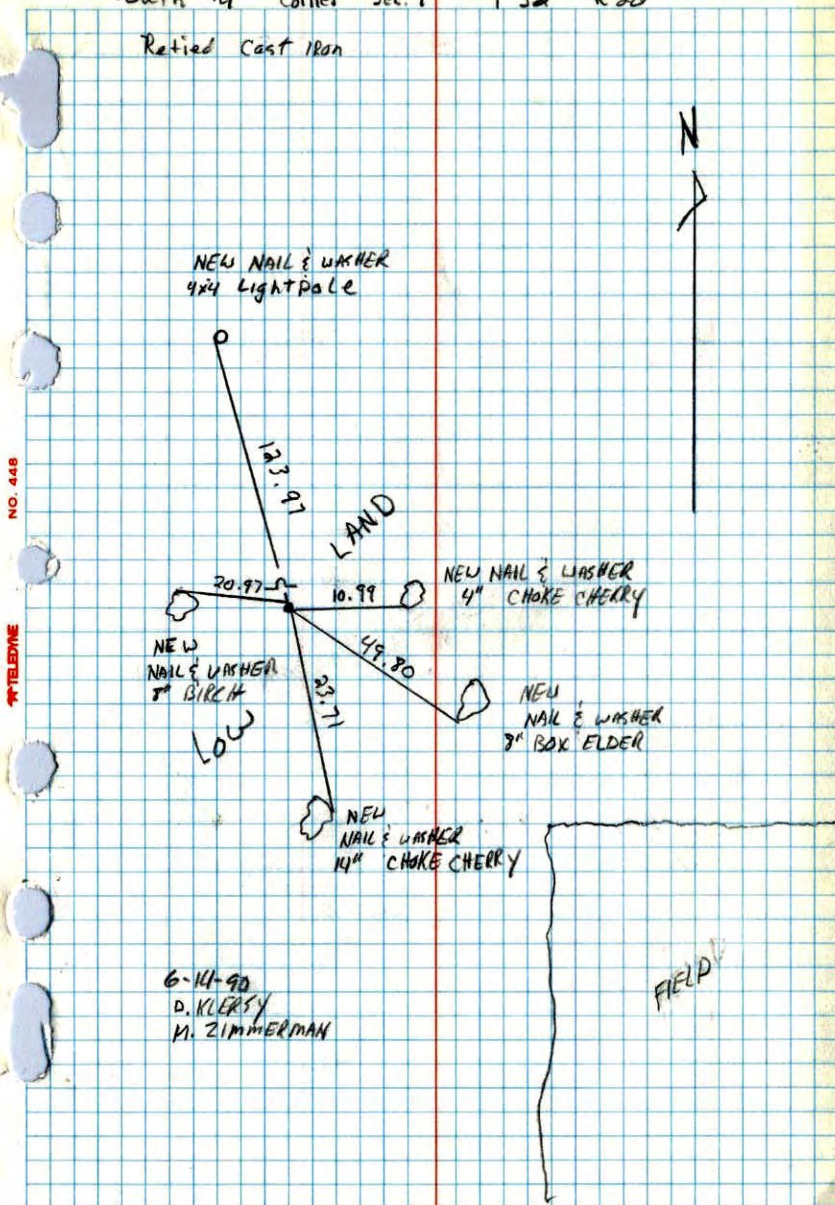


| Revised date | Revised date | Revised date |
|--------------|--------------|--------------|
| 8-4-86 | | |
| 6-14-90 | | |
| 8-10-95 | | |
| 4-20-05 | GPS + RETIEY | |
| | | |
| | | |
| | | |



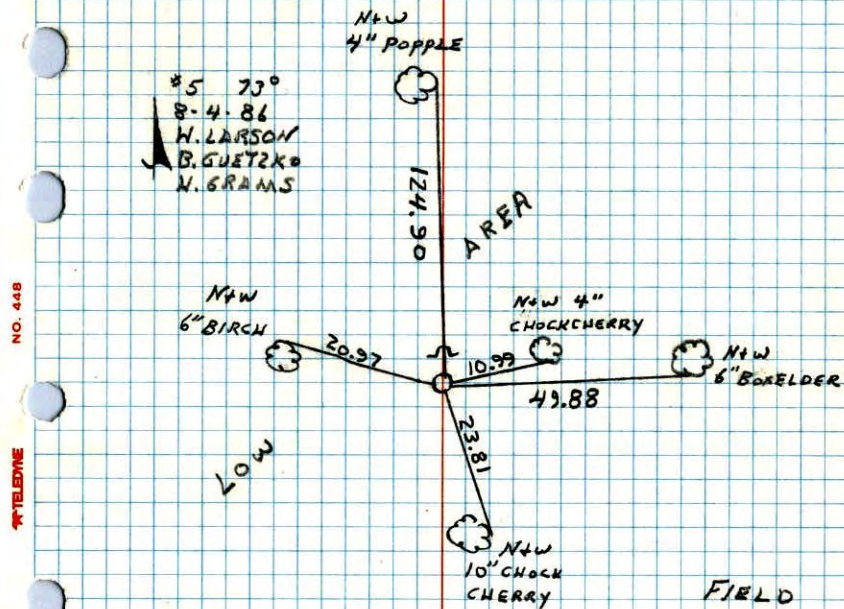
South 1/4 Corner Sec. 1 T32 R22

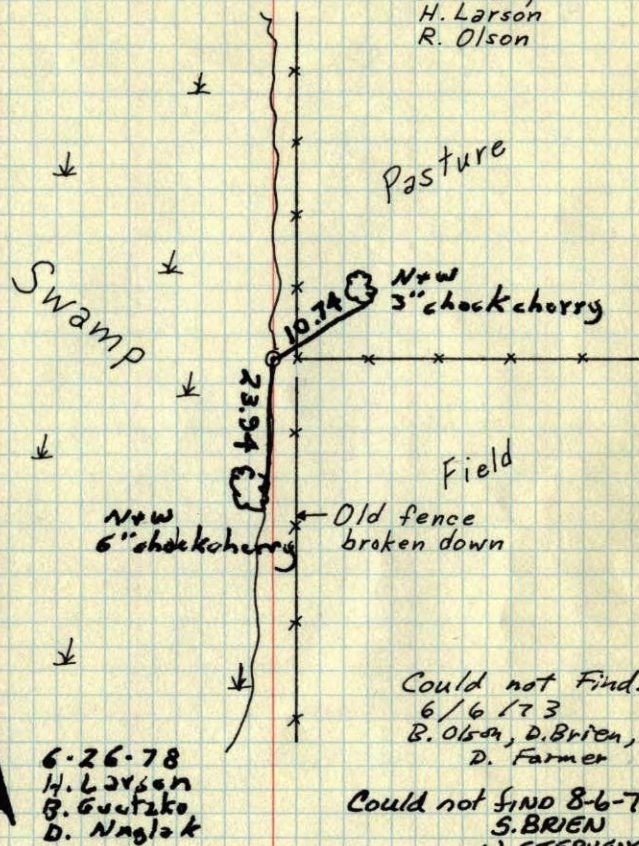
Retied Cast Iron



SOUTH 1/4 CORNER SECTION 1 T32 R22

REPLACED 3/4" IRON PIPE WITH CAST IRON
MONUMENT. RETIED. SIGN & POST ON NORTH
SIDE. C.I. ALSO CORNER OF PLAT TO N.E.



S $\frac{1}{4}$ Cor. Sec. 1 - T32 - R22Found $\frac{3}{4}$ " Iron PipeDec. 27, 1968
H. Larson
R. OlsonTEMPERATURE CORRECTED
AND HORIZONTALLY
TAPED MEASUREMENTSROLAND W. ANDERSON
COUNTY SURVEYOR
ANOKA COUNTY, MINNESOTA.S $\frac{1}{4}$ Sec. 1 T32 R22Found $\frac{3}{4}$ " Iron pipeDec. 27, 1968
H. Larson
R. Olson