

CERTIFICATE OF LOCATION OF GOVERNMENT CORNER

County of Anoka State of Minnesota

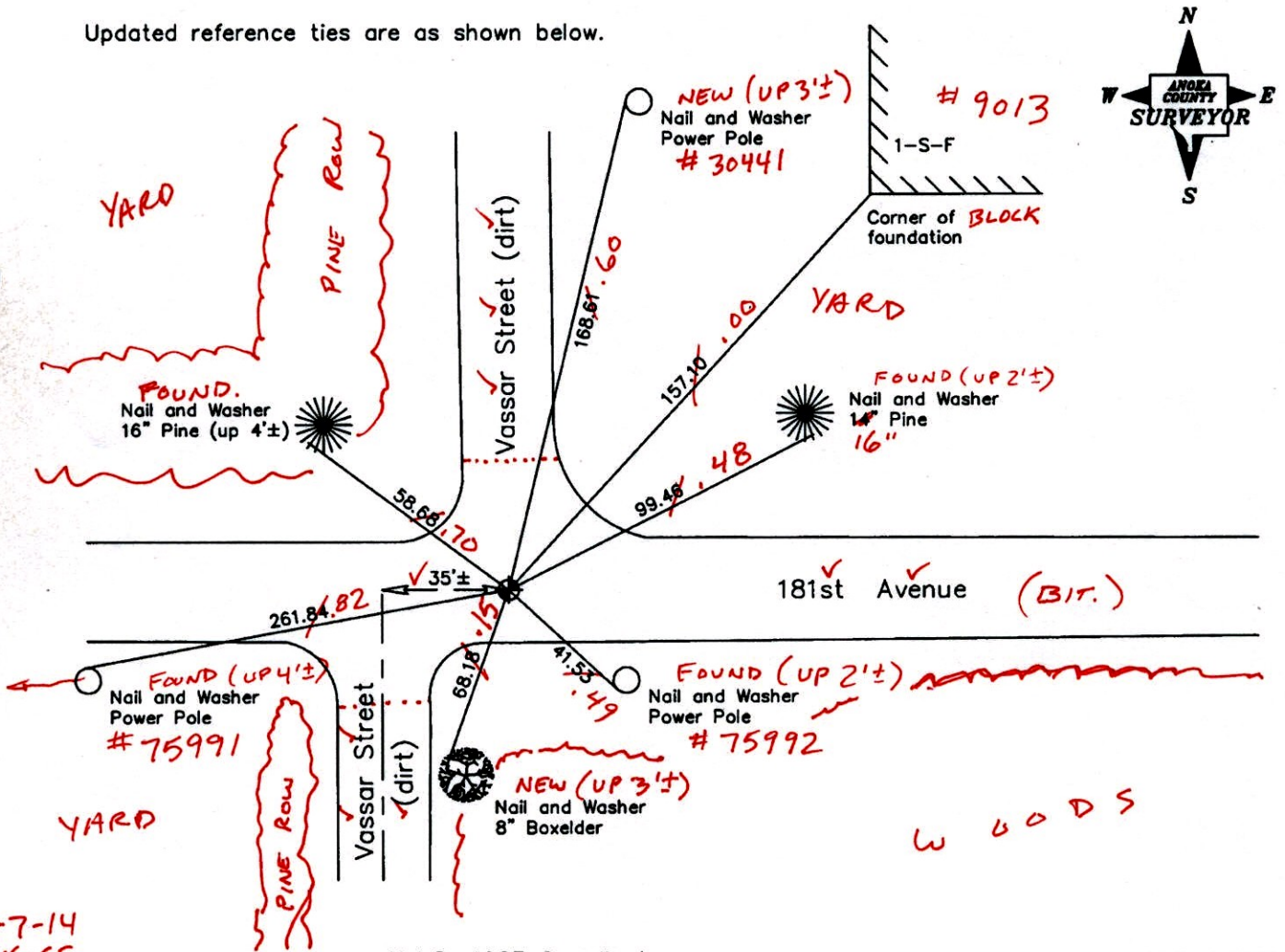
Northeast Corner of Sec. 2 Township 32 Range 22

On the 10th day of May, 1965, the described corner was evidenced by 3/4" iron pipe from Don Hult ties

and to perpetuate the location of said corner, at the exact location thereof, a permanent marker was placed consisting of a cast iron monument (N. OF E 2'±)

AND on the 5th day of November, 2007, said permanent marker was found and the ties were updated.

Updated reference ties are as shown below.



10-7-14
BK-SS
TOTAL
STA.
V.R.S.

Revised date
8/14/89
8/10/95
11/5/07

N.A.D. 1983 Coordinates (1996 Adjustment)	
County Project Coordinates	
Northing	195505.4874
Easting	558380.0867
Date	6/16/03

I hereby certify that this United States public land survey monument record is correct and complete to the best of my knowledge and belief.

Larry D. Hoium Date 11/5/07
 Larry D. Hoium, Anoka County Surveyor
 Minnesota License Number 18165

3DQ=0.07 N=195505.4018 E=558380.79.9892

CERTIFICATE OF LOCATION OF GOVERNMENT CORNER

County of Anoka

State of Minnesota

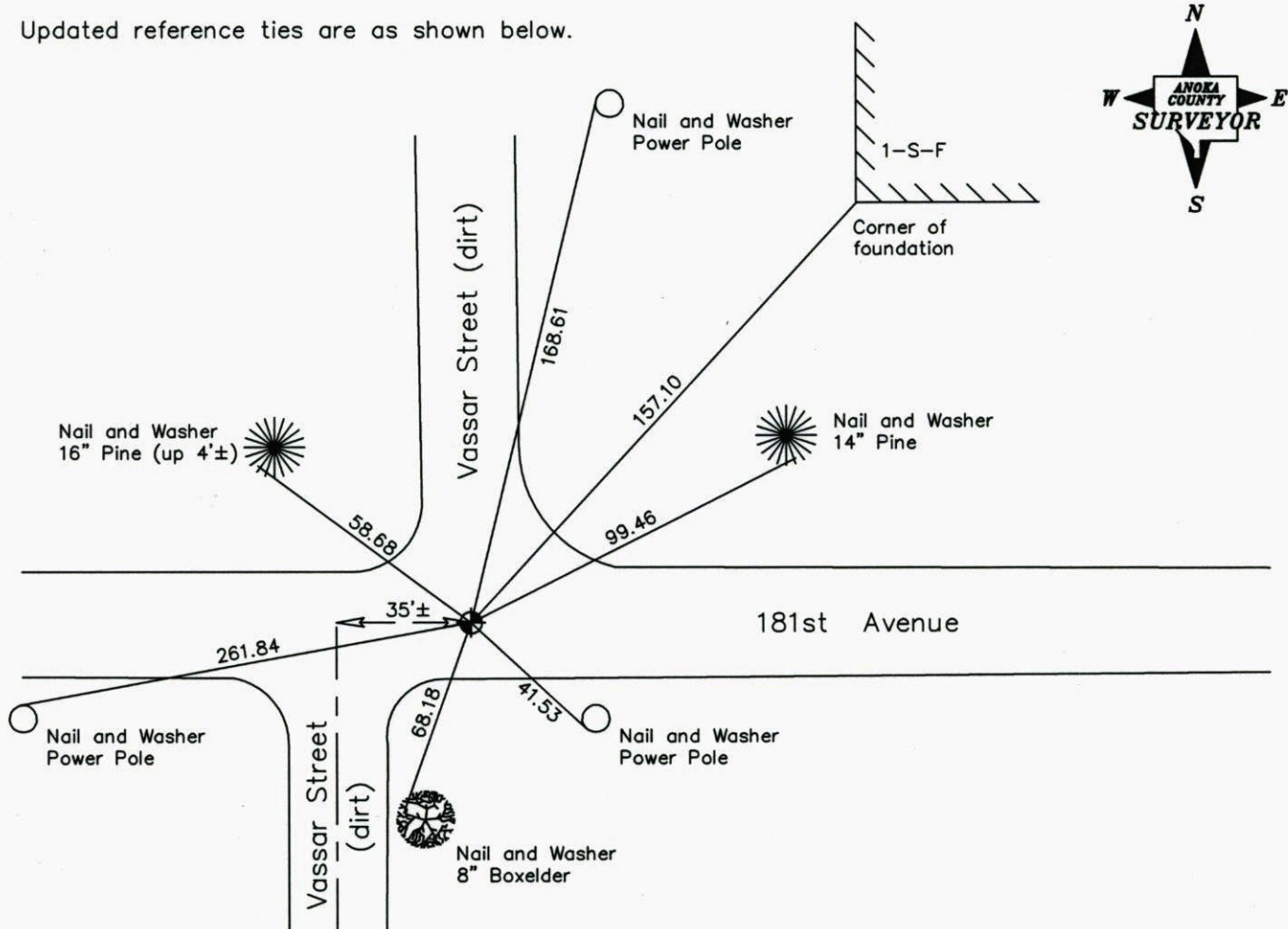
Northeast Corner of Sec. 2 Township 32 Range 22

On the 10th day of May, 1965, the described corner was evidenced by 3/4" iron pipe from Don Hult ties

and to perpetuate the location of said corner, at the exact location thereof, a permanent marker was placed consisting of a cast iron monument

AND on the 5th day of November, 2007, said permanent marker was found and the ties were updated.

Updated reference ties are as shown below.



Revised date
8/14/89
8/10/95
11/5/07

N.A.D. 1983 Coordinates (1996 Adjustment)	
County Project Coordinates	
Northing	195505.4874
Easting	558380.0867
Date	6/16/03

I hereby certify that this United States public land survey monument record is correct and complete to the best of my knowledge and belief.

Larry D. Hoium Date 11/5/07

Larry D. Hoium, Anoka County Surveyor

Minnesota License Number 18165

CERTIFICATE OF LOCATION OF GOVERNMENT CORNER

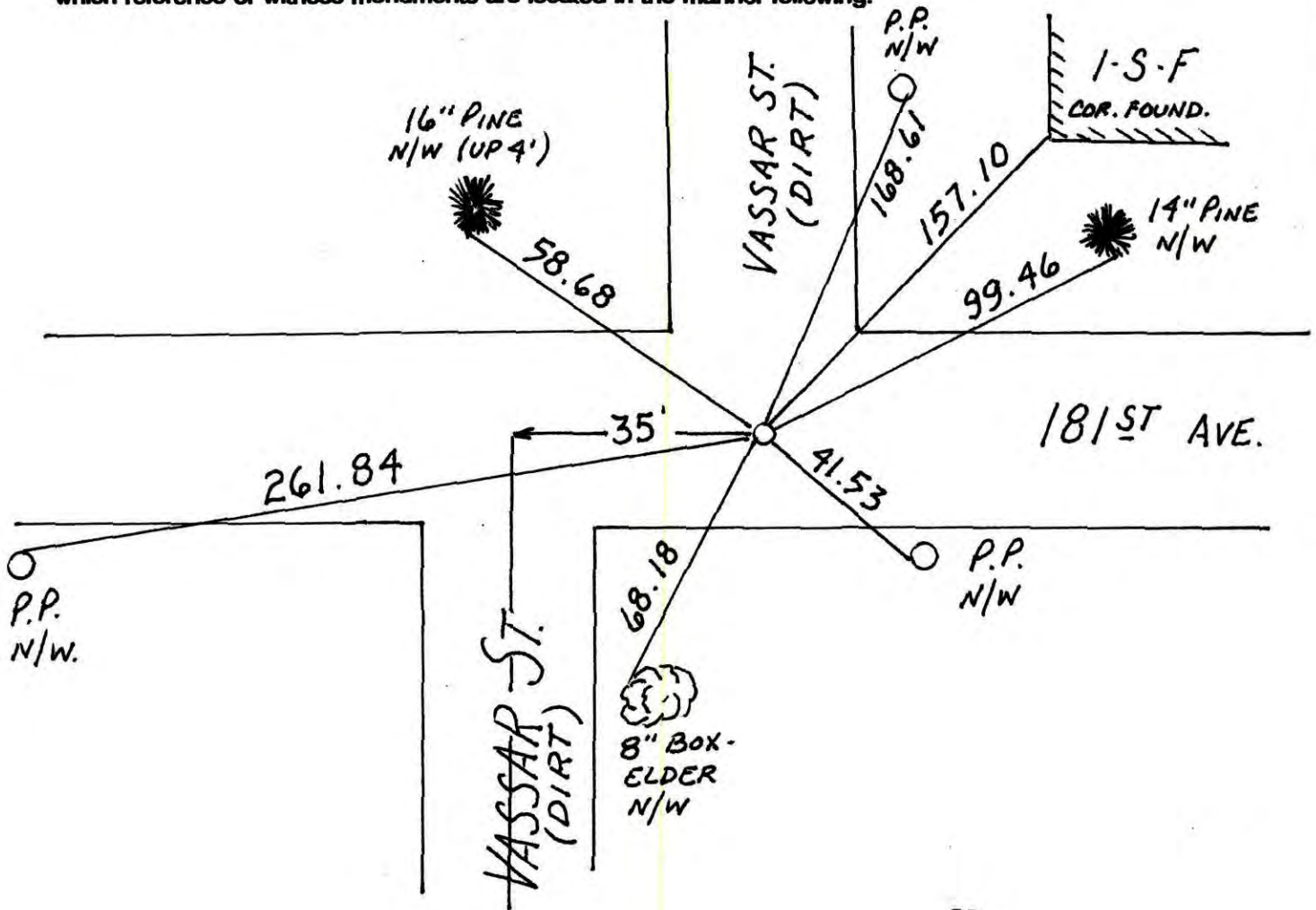
County of Anoka State of Minnesota

NORTHEAST Corner of Sec. 2 Township 32 Range 22

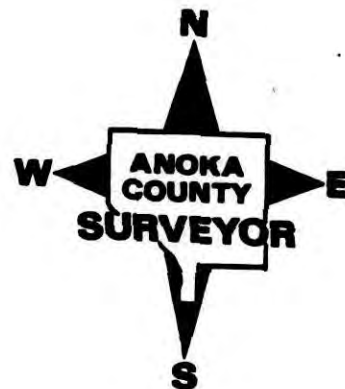
I hereby certify that on the 10TH day of MAY, 1965, I found the described corner which was evidenced by 3/4" I.P. FROM DON HULT TIES

and I further certify that to perpetuate the location of said corner, I did, at the exact location thereof, place a permanent marker consisting of CAST IRON MON.

which reference or witness monuments are located in the manner following:



Revised date	Revised date	Revised date
8-2-25		
7-14-86		
2-3-88		
8-14-89		
8-10-95		
11-5-07		



CERTIFICATE OF LOCATION OF GOVERNMENT CORNER

County of Anoka

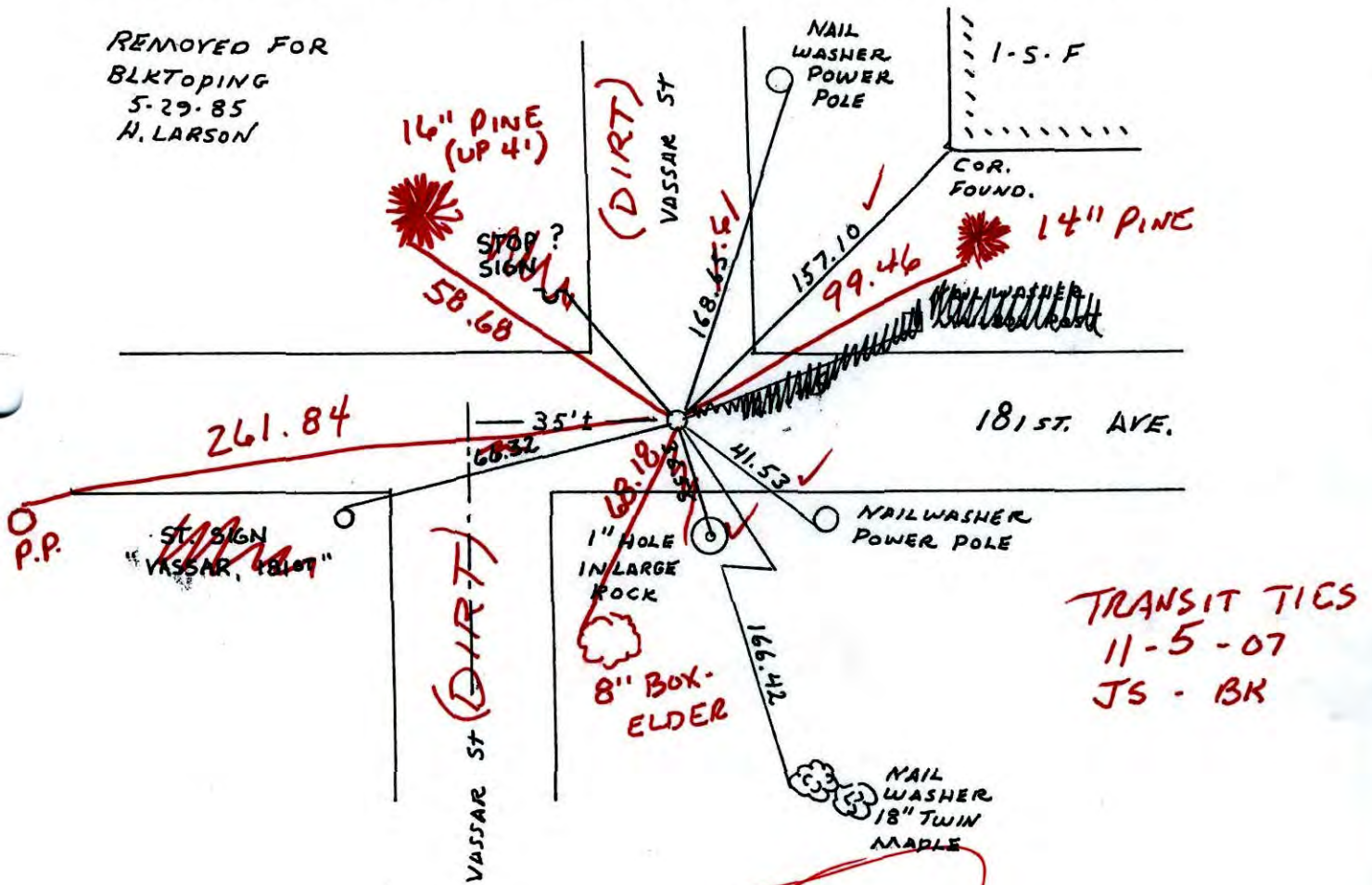
State of Minnesota

NORTHEAST Corner of Sec. 2 Township 32 Range 22

I hereby certify that on the ? day of MAY, 1965, I found the described corner which was evidenced by 3/4" IP FROM DON HULT TIES

and I further certify that to perpetuate the location of said corner, I did, at the exact location thereof, place a permanent marker consisting of CAST IRON MONUMENT

which reference or witness monuments are located in the manner following:



REMOVED FOR
BLKTOPING
5-29-85
H. LARSON

O.P.P.

ST. SIGN
"VASSAR, 181ST"

TRANSIT TIES
11-5-07
JS - BK

ADD

Revised date
8-2-25
7-14-86
REDRAWN 2-3-88
8-14-89
8-10-95

By
D. ROSS
H. LARSON
H. LARSON

PULLED +
RESET C.I.

Minnesota State Plane Coordinates
South Zone

Y _____ X _____

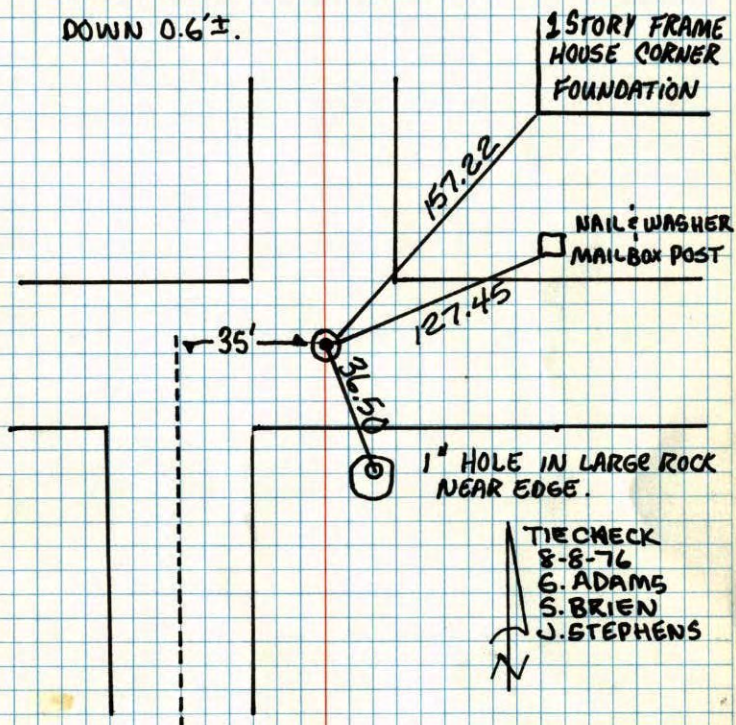
County Surveyor

Date

Registered Land Surveyor No. _____

N.E. COR. SEC. 2 T32 R.22

IRON PIPE TIED BY DON C. HULT. DOWN 0.7'±.
REPLACED WITH CAST IRON MONUMENT
DOWN 0.6'±.

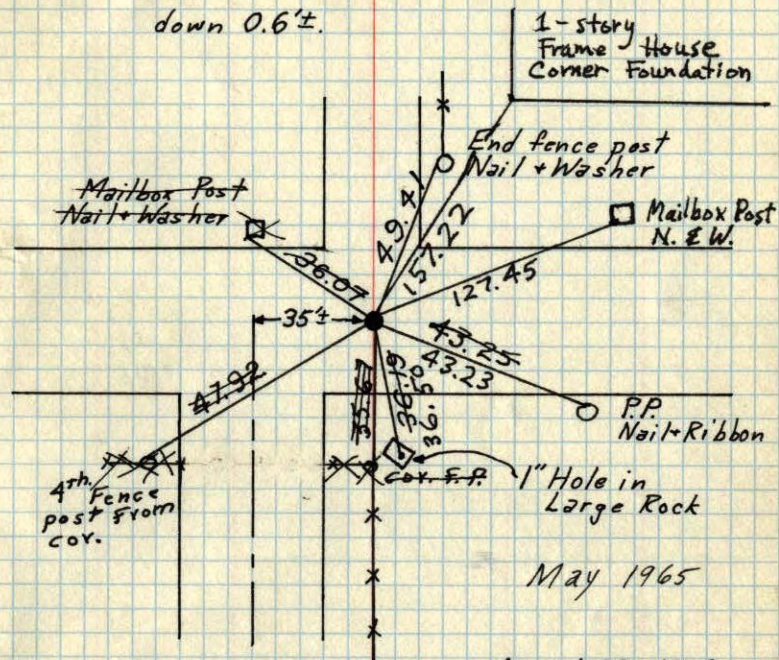


TEMPERATURE CORRECTED
AND HORIZONTALLY
TAPED MEASUREMENTS

ROLAND W. ANDERSON
COUNTY SURVEYOR
ANOKA COUNTY, MINNESOTA

N.E. Cor. Sec. 2 T32 R22

Iron pipe Tied by Don C. Hult.
down 0.7'. Replaced with Cast Iron Monument
down 0.6'±.



Ties Checked
June 5, 1973
B. Olson
D. Brien
D. Farmer

August 22, 1968
D. Powell
R. Olson
P. Pieh

SEE NEW TIES

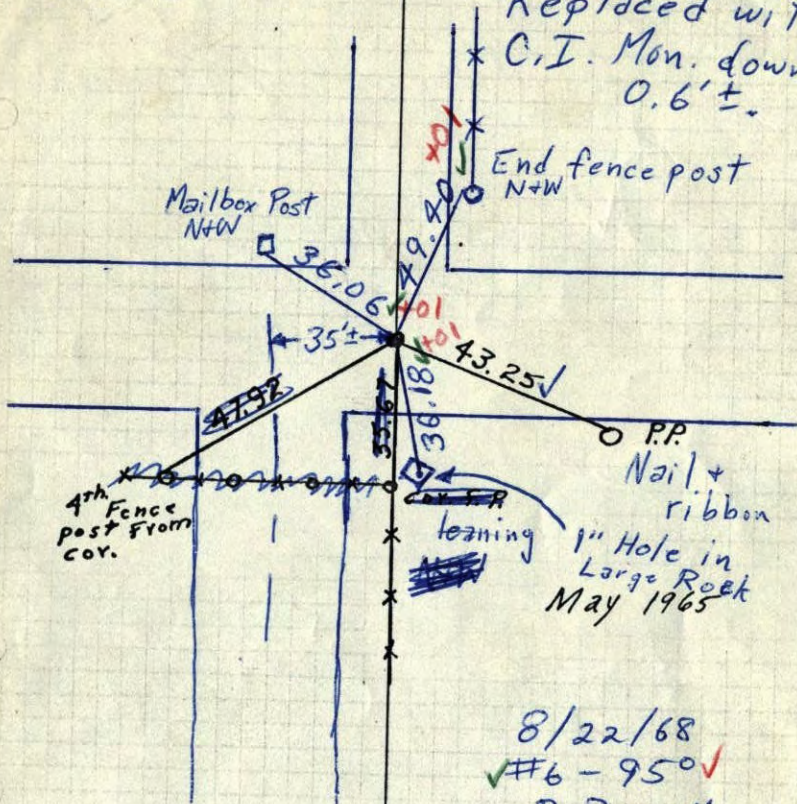
TEMPERATURE CORRECTED
AND HORIZONTALLY
TAPED MEASUREMENTS

ROLAND W. ANDERSON
COUNTY SURVEYOR
ANOKA COUNTY, MINNESOTA

N.E. Cor. Sec. 2 T32 R22

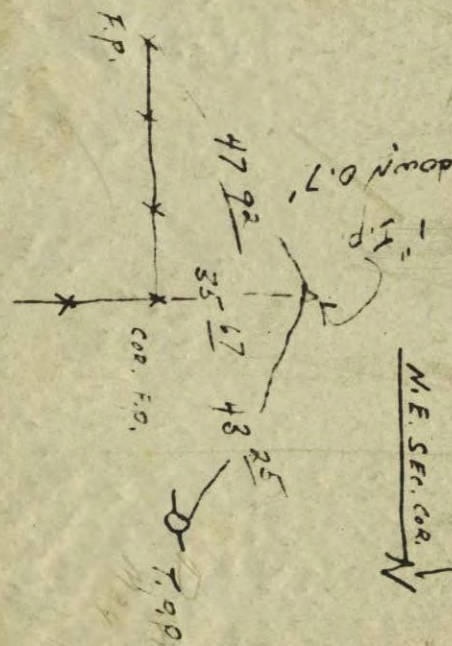
3/4" Iron pipe Tied by Don C. Hult.
down 0.7'

Replaced with
C.I. Mon. down
0.6'±.



1" Hole in
Large Rock
May 1965

8/22/68
#6 - 95° ✓
D. Powell
R. Olson
P. Pieh



Don C. Hult
May 1965

N.E. Corn. Sec. 2, T32, R22