

CERTIFICATE OF LOCATION OF GOVERNMENT CORNER

County of Anoka

State of Minnesota

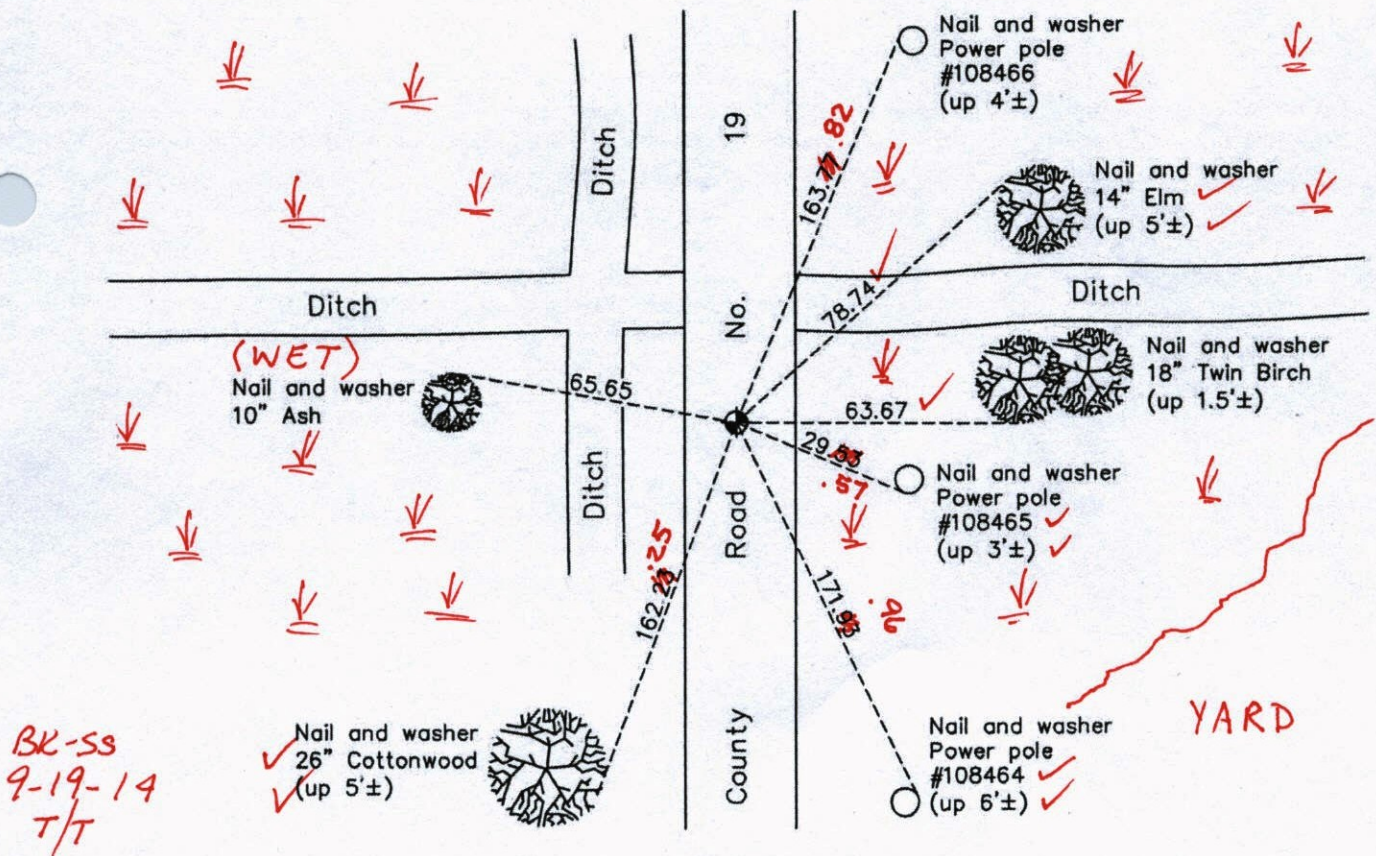
Northwest Corner of Sec. 10 Township 32 Range 22

On the 5th day of April, 1978, the described corner was evidenced by an iron pipe

and to perpetuate the location of said corner, at the exact location thereof, a permanent marker was placed consisting of a cast iron monument (1'± WEST OF E)

AND on the 13th day of September, 2012, said permanent marker was found missing. Replaced it with 3/4 of a cast iron monument and the ties were updated

Updated reference ties are as shown below.



BK-SS
9-19-14
T/T

N
W ANOKA COUNTY SURVEYOR E
S

Revision Date
12/16/13

N.A.D. 1983 Coordinates
(1996 Adjustment)

County Project Coordinates	
Northing	190460.4077
Easting	547921.6560
Date	6/23/03

I hereby certify that this United States public land survey monument record is correct and complete to the best of my knowledge and belief.

Larry D. Hoium Date 12/16/13

Larry D. Hoium, Anoka County Surveyor
Minnesota License Number 18165

VRS 3DQ = 0.05 N = 190460.3815 E = 547921.6872

CERTIFICATE OF LOCATION OF GOVERNMENT CORNER

County of Anoka

State of Minnesota

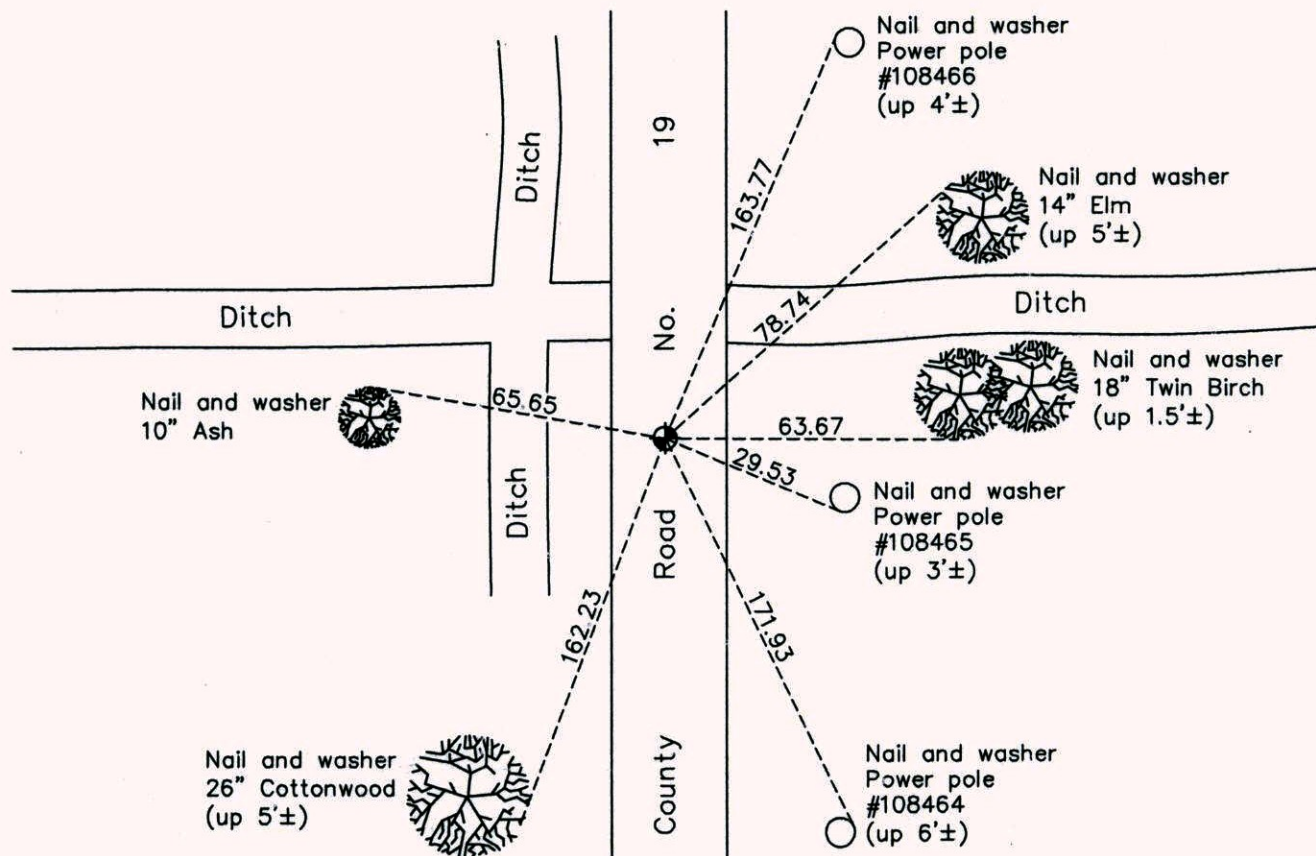
Northwest Corner of Sec. 10 Township 32 Range 22

On the 5th day of April, 1978, the described corner was evidenced by an iron pipe

and to perpetuate the location of said corner, at the exact location thereof, a permanent marker was placed consisting of a cast iron monument

AND on the 13th day of September, 2012, said permanent marker was found missing. Replaced it with 3/4 of a cast iron monument and the ties were updated

Updated reference ties are as shown below.



N

 ANOKA COUNTY SURVEYOR
 W ← → E
 S

Revision Date
12/16/13

N.A.D. 1983 Coordinates
(1996 Adjustment)

County Project Coordinates	
Northing	190460.4077
Easting	547921.6560
Date	6/23/03

I hereby certify that this United States public land survey monument record is correct and complete to the best of my knowledge and belief.

Larry D. Hoium Date 12/16/13

Larry D. Hoium, Anoka County Surveyor
 Minnesota License Number 18165

CERTIFICATE OF LOCATION OF GOVERNMENT CORNER

County of Anoka State of Minnesota

Northwest Corner of Sec. 10 Township 32 Range 22

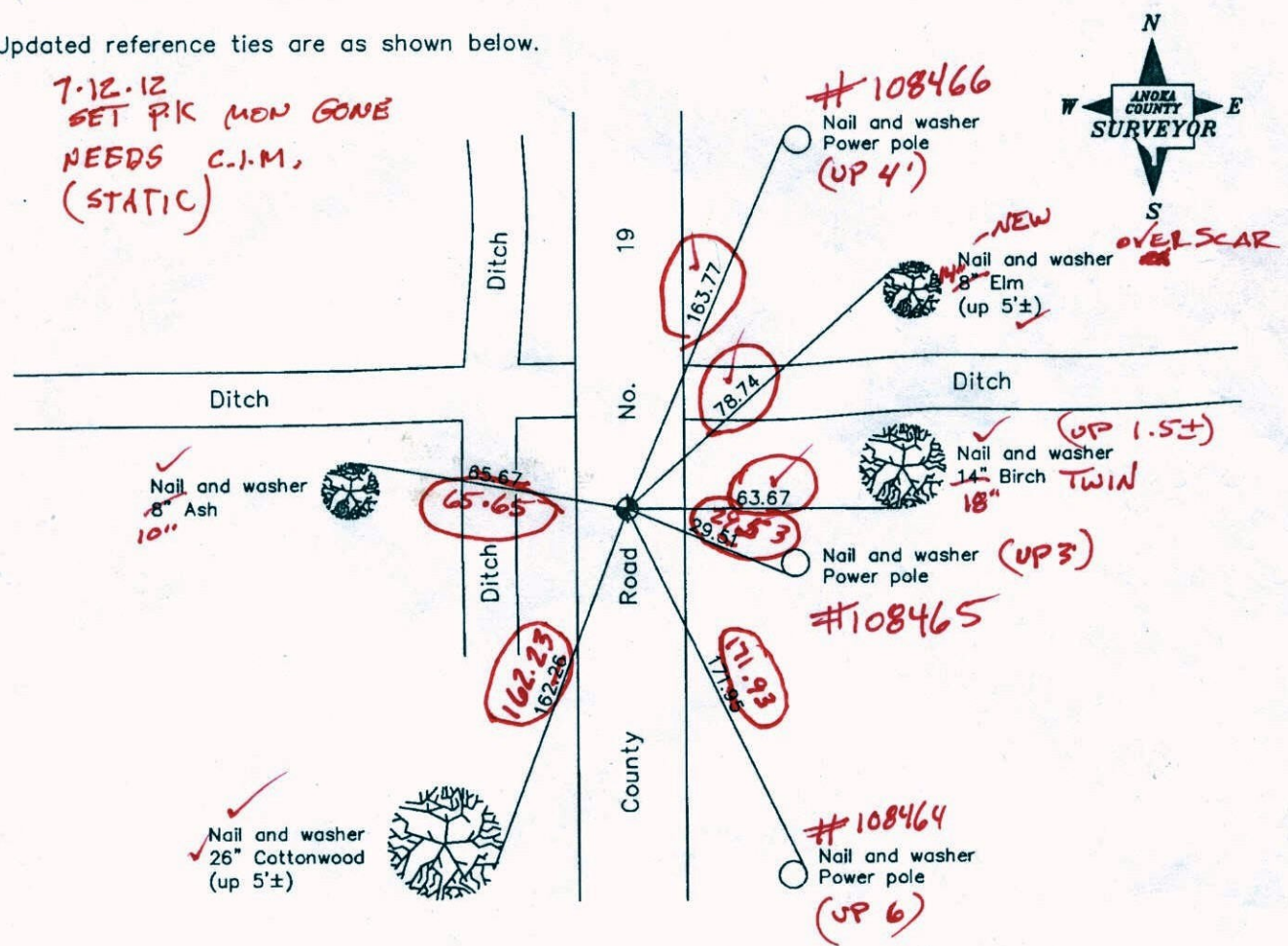
On the 5th day of April, 1978, the described corner was evidenced by an iron pipe

and to perpetuate the location of said corner, at the exact location thereof, a permanent marker was placed consisting of a cast iron monument

9-13-12 JS SH
SET 3/4 MON + RETIED CIRCLED DIST ARE FINAL
(DUE TO EXTREMELY HARD SUB-BASE)

AND on the 19th day of December, 2007, said permanent marker was found and the ties were updated

Updated reference ties are as shown below.



Revised date
8/26/97
8/09/04
12/19/07

N.A.D. 1983 Coordinates (1996 Adjustment)	
County Project Coordinates	
Northing	190460.4077
Easting	547921.6560
Date	6/23/03

I hereby certify that this United States public land survey monument record is correct and complete to the best of my knowledge and belief.

Larry D. Hoium Date 12/19/07

Larry D. Hoium, Anoka County Surveyor

Minnesota License Number 18165

CERTIFICATE OF LOCATION OF GOVERNMENT CORNER

County of Anoka

State of Minnesota

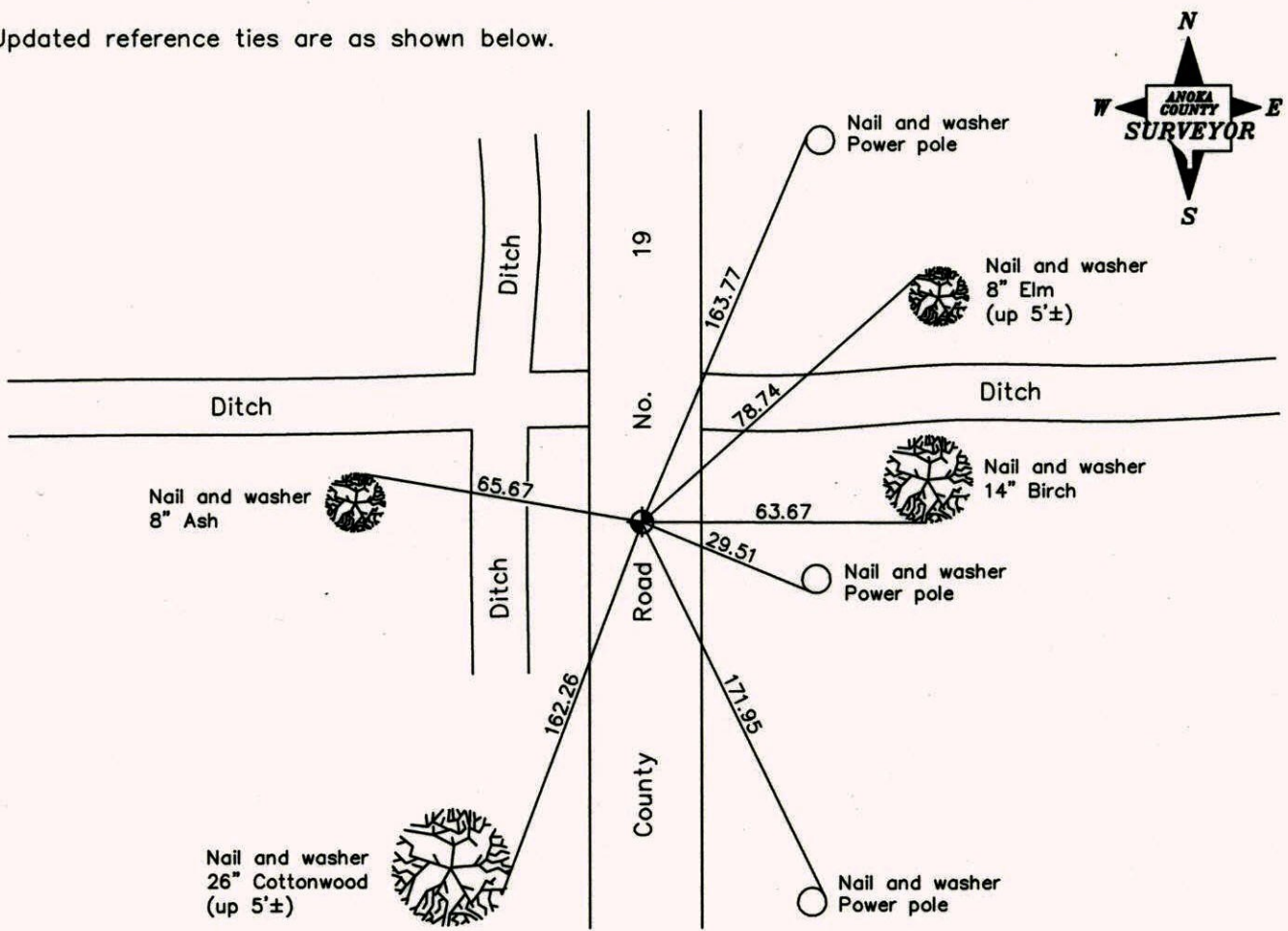
Northwest Corner of Sec. 10 Township 32 Range 22

On the 5th day of April, 1978, the described corner was evidenced by an iron pipe

and to perpetuate the location of said corner, at the exact location thereof, a permanent marker was placed consisting of a cast iron monument

AND on the 19th day of December, 2007, said permanent marker was found and the ties were updated

Updated reference ties are as shown below.



Revised date
8/26/97
8/09/04
12/19/07

N.A.D. 1983 Coordinates (1996 Adjustment)	
County Project Coordinates	
Northing	<u>190460.4077</u>
Easting	<u>547921.6560</u>
Date	<u>6/23/03</u>

I hereby certify that this United States public land survey monument record is correct and complete to the best of my knowledge and belief.

Larry D. Hoium Date 12/19/07

Larry D. Hoium, Anoka County Surveyor

Minnesota License Number 18165

CERTIFICATE OF LOCATION OF GOVERNMENT CORNER

County of Anoka

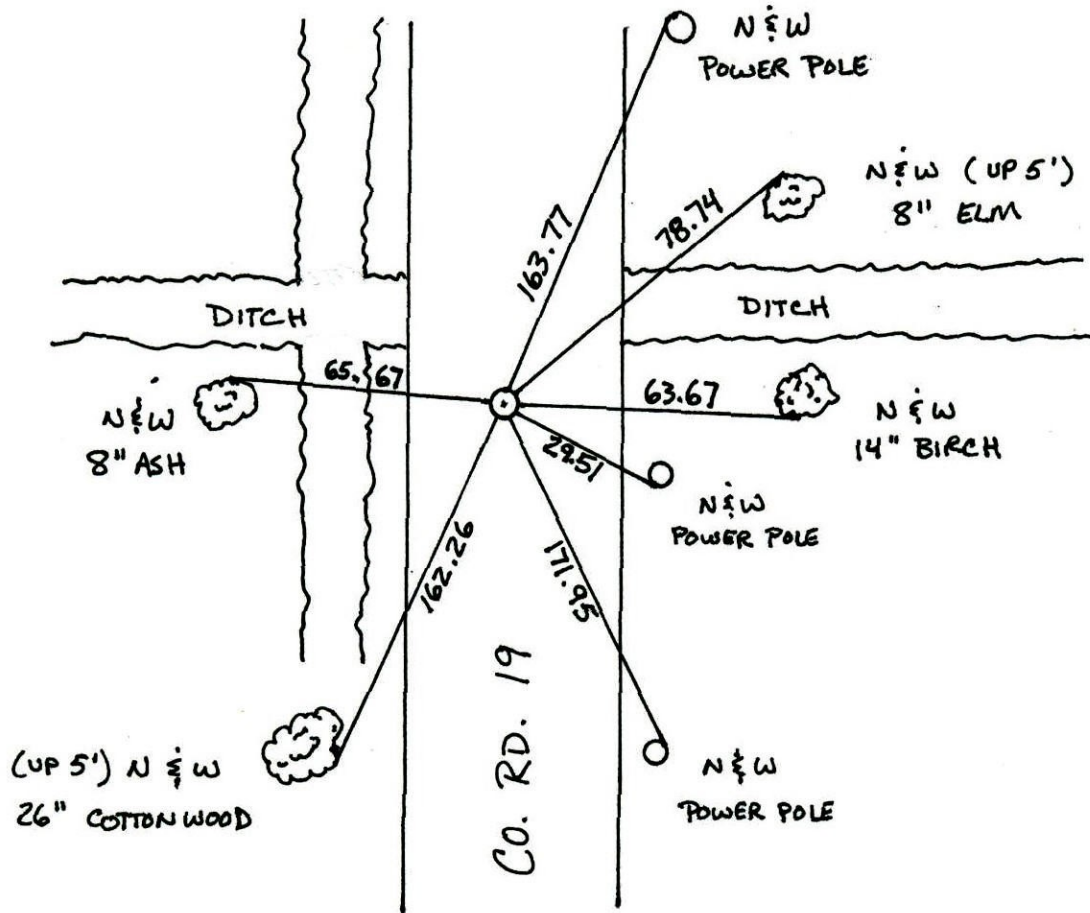
State of Minnesota

NORTHWEST Corner of Sec. 10 Township 32 Range 22

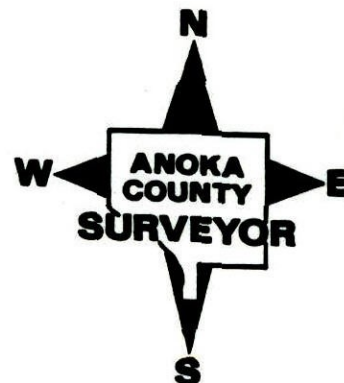
I hereby certify that on the 5 day of APRIL, 1978, I found the described corner which was evidenced by IRON PIPE

and I further certify that to perpetuate the location of said corner, I did, at the exact location thereof, place a permanent marker consisting of CAST IRON MONUMENT

which reference or witness monuments are located in the manner following:



Revised date	Revised date	Revised date
8-9-89		
8-14-95		
8-26-97		
8-9-04		
12-19-07		



CERTIFICATE OF LOCATION OF GOVERNMENT CORNER

County of Anoka

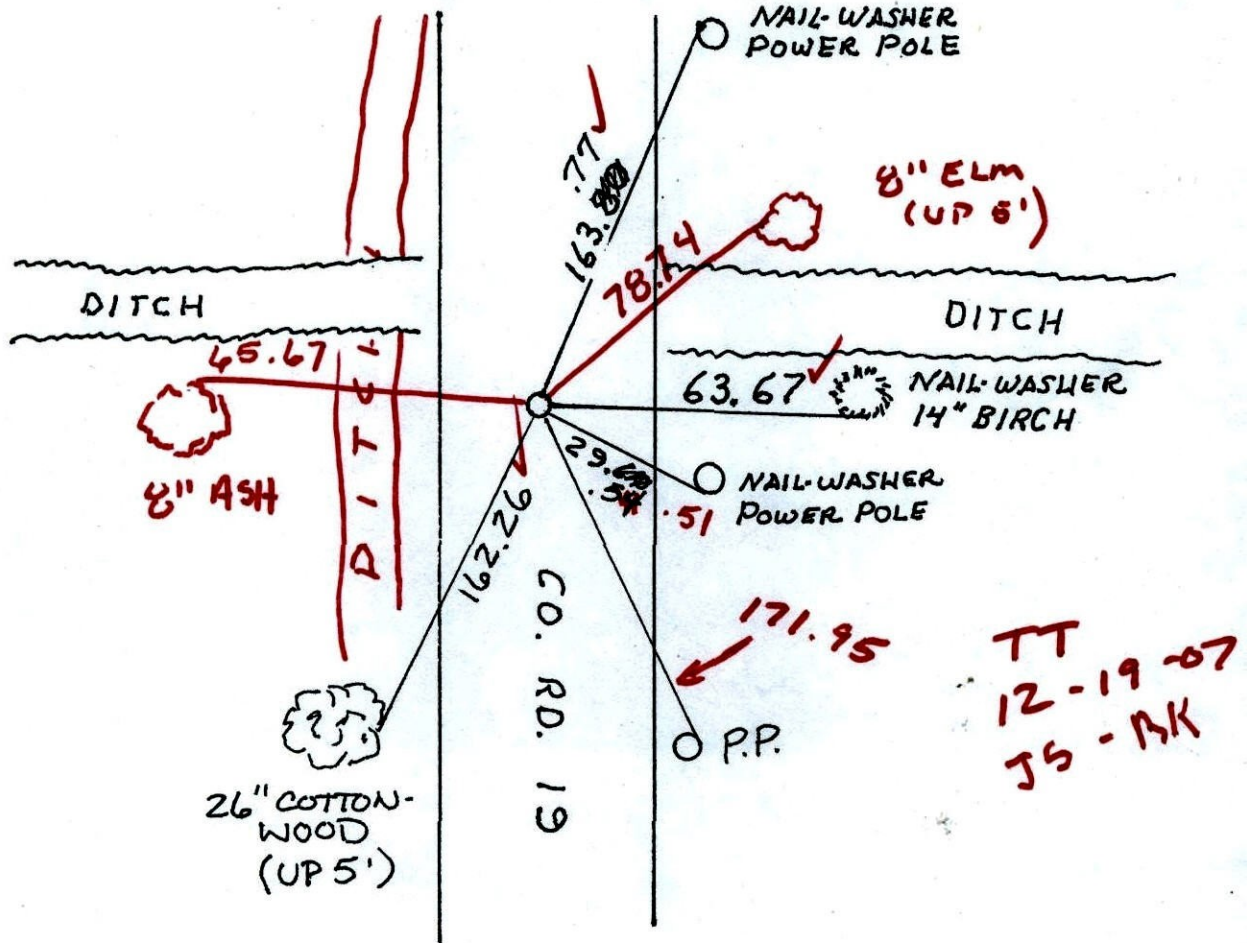
State of Minnesota

NORTHWEST Corner of Sec. 10 Township 32 Range 22

I hereby certify that on the 5TH day of APRIL, 1978, I found the described corner which was evidenced by IRON PIPE

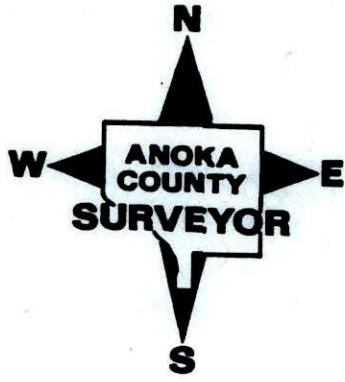
and I further certify that to perpetuate the location of said corner, I did, at the exact location thereof, place a permanent marker consisting of CAST IRON MONUMENT

which reference or witness monuments are located in the manner following:



12-19-07

Revised date	Revised date	Revised date
8-9-89		
8-14-95		
REPLACED 8-26-97		
8-9-04		

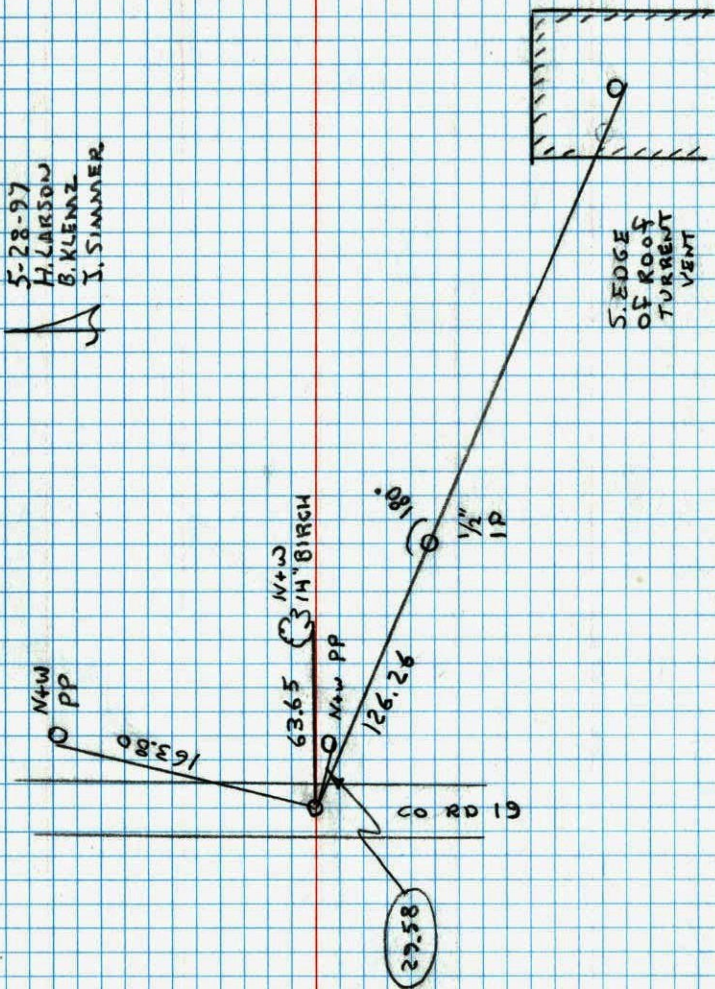


CONSTRUCTION TIES

NW COR. SEC. 10 T32 R22

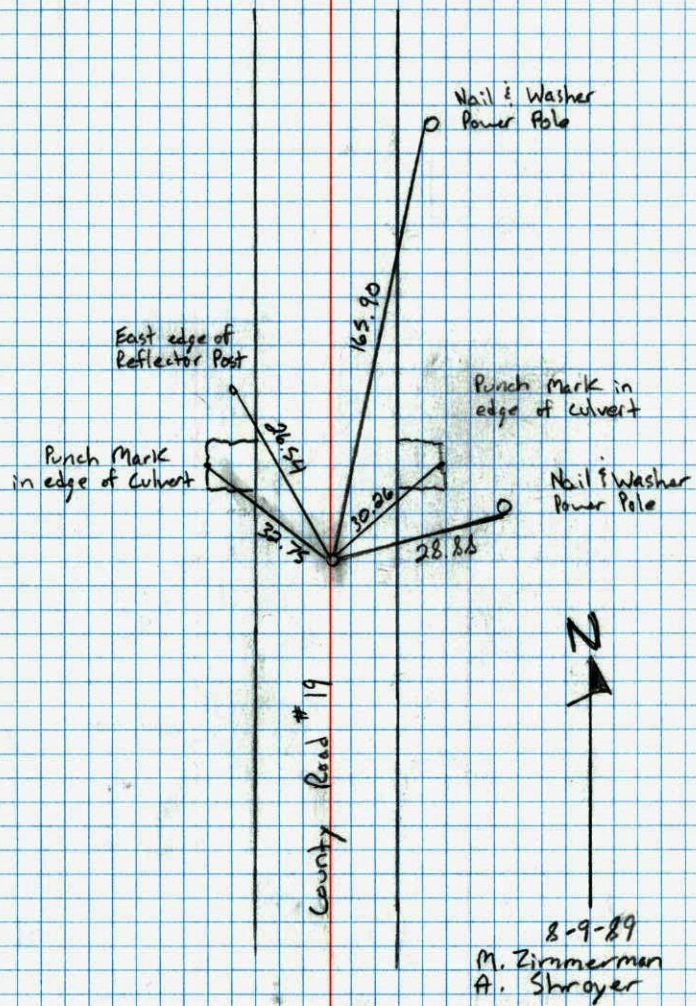
TIED AND REMOVED

5-28-97
H. LARSON
B. KLENNZ
I. SIMMER



Northwest Corner Sec. 10 T32 R22

Retied Cast Iron Monument



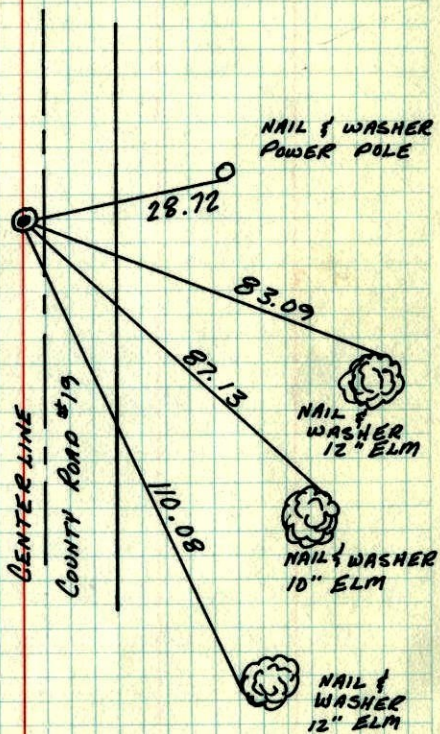
N.W. COR. SEC. 10 - T32 - R22

SET CAST IRON MONUMENT AT FOUND IRON PIPE.

SET FLUSH IN BLACKTOP 1' WEST OF TRAVELED CENTERLINE.



5 APR 78
M.D. ANDERSON
P.W. BERTLESON
M.J. AUNE



TEMPERATURE CORRECTED
AND HORIZONTALLY
TAPED MEASUREMENTS

ROLAND W. ANDERSON
COUNTY SURVEYOR
ANOKA COUNTY, MINNESOTA

N.W. Cor. Sec. 10 - T32 - R22

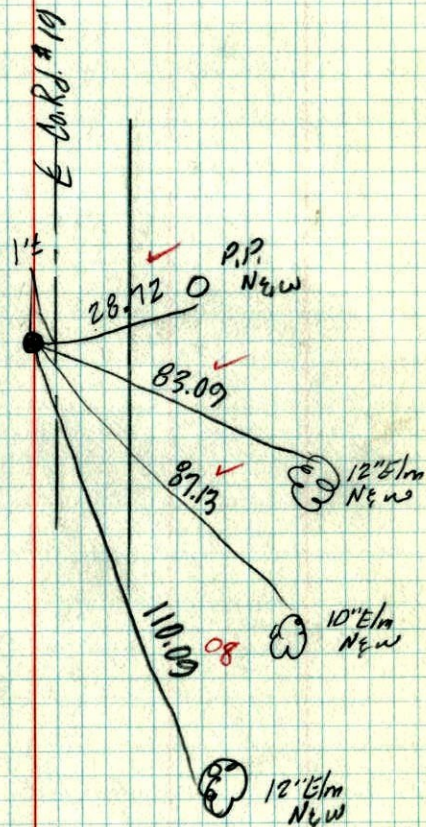
set c.i. Mon. at found iron pipe

set flush in Blacktop 1' west of traveled &



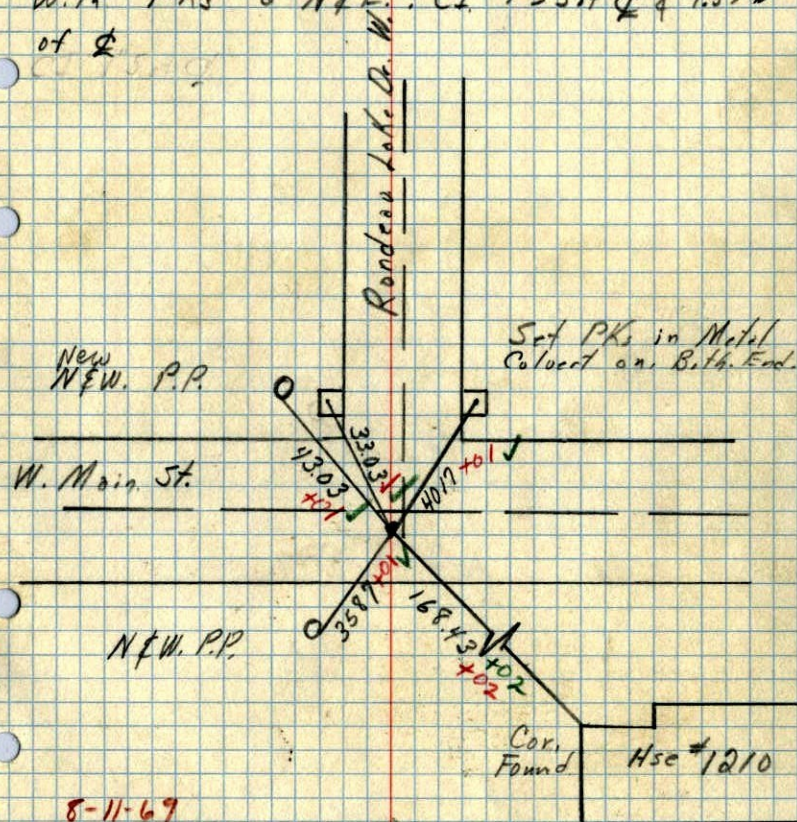
Apr. 5, 1978
M.D. Anderson
P.W. Bertleson
M.J. Aune

Temp 55°
tape #15



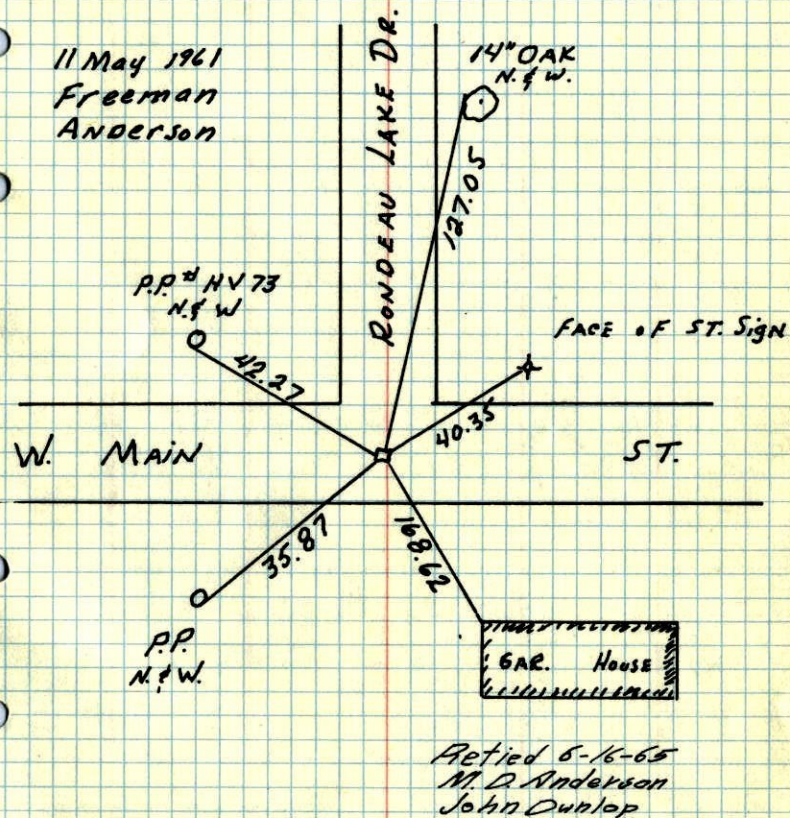
NW 10
S.E. Cor. Sec 4 T 32 R. 22

Found Conc Mon from Old Ties down 0.2"
Broken off Set. C.I. Flush over Conc
W. 16 PKs @ N&E. CI 1 1/2 S. of Φ & 4.5' W
of Φ



8-11-69
Tape #5 ✓
Temp 90° ✓
R.A. Olson
R. Brien

NW 10
S.E. Cor. Sec. 4 31-22 Centerville
Re-inforced Conc. Mon. down 0.5' in
& W. MAIN ST & RONDEAU LAKE
DRIVE IRON ON N. FACE



11 May 1961
Freeman
Anderson

Retied 8-16-65
M. D. Anderson
John Dunlop

TEMPERATURE CORRECTED ROLAND W. ANDERSON
AND HORIZONTALLY COUNTY SURVEYOR
TAPED MEASUREMENTS ANOKA COUNTY, MINNESOTA