

# CERTIFICATE OF LOCATION OF GOVERNMENT CORNER

County of Anoka

State of Minnesota

South 1/4 Corner of Sec. 5 Township 32 Range 22

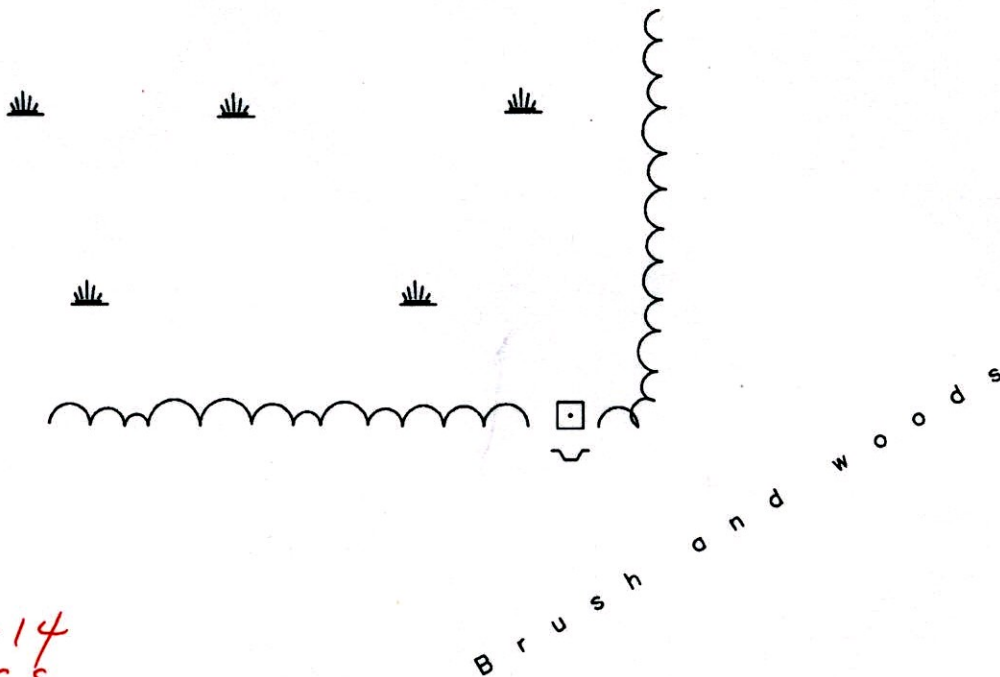
On the 2nd day of February, 1977, the described corner was evidenced by a concrete monument

and to perpetuate the location of said corner, at the exact location thereof, a permanent marker was placed consisting of the same concrete monument **TELESPAR UP 6' +/-**  
**SIGN & POST DOWN - SLIGHT LEANING S.E. SLIGHTLY**

AND on the 30th day of January, 2006, said permanent marker was found laying down.

The concrete monument was reset using area resurvey. No ties remain.

Updated reference ties are as shown below.

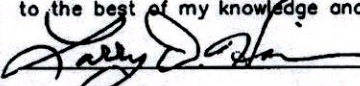


**12-11-14**  
**BK-SS**

Revised date
8/17/95
1/30/06

N.A.D. 1983 Coordinates (1996 Adjustment)
County Project Coordinates
Northing <u>190457.1176</u>
Easting <u>540013.5765</u>
Date <u>3/21/06</u>

I hereby certify that this United States public land survey monument record is correct and complete to the best of my knowledge and belief.

 Date 1/30/06

Larry D. Hoium, Anoka County Surveyor

Minnesota License Number 18165

**3D=0.06**

**N=190457.8972**

**E=540013.8502**

# CERTIFICATE OF LOCATION OF GOVERNMENT CORNER

County of Anoka

State of Minnesota

South 1/4 Corner of Sec. 5 Township 32 Range 22

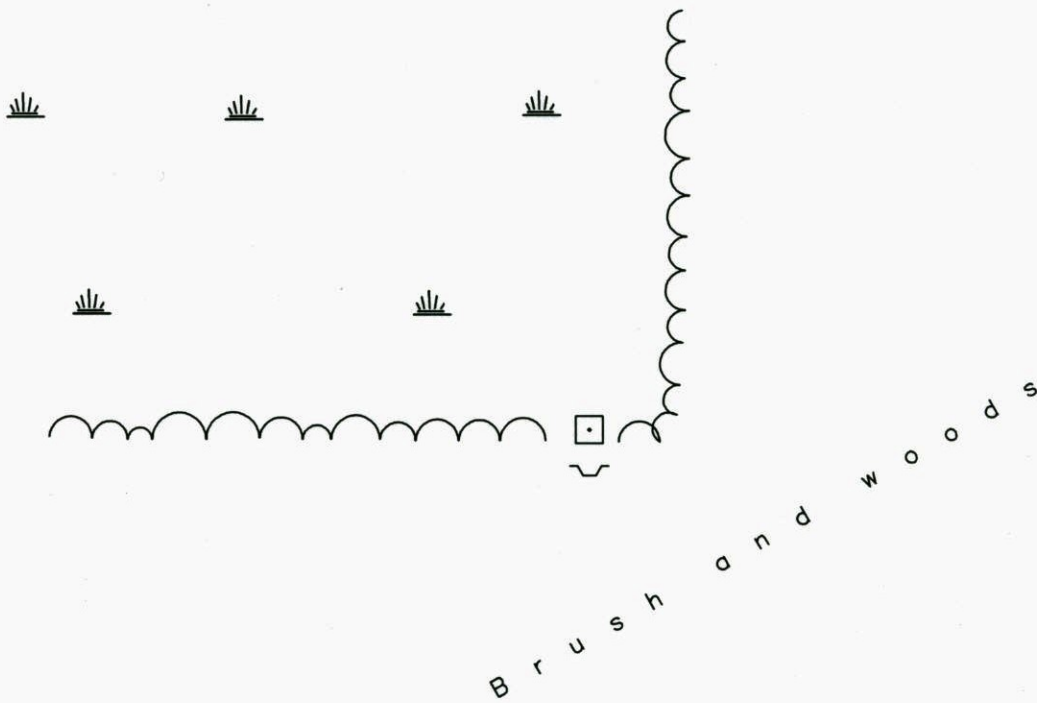
On the 2nd day of February, 1977, the described corner was evidenced by a concrete monument

and to perpetuate the location of said corner, at the exact location thereof, a permanent marker was placed consisting of the same concrete monument

AND on the 30th day of January, 2006, said permanent marker was found laying down.

The concrete monument was reset using area resurvey. No ties remain.

Updated reference ties are as shown below.



Revised date
8/17/95
1/30/06

N.A.D. 1983 Coordinates (1996 Adjustment)	
County Project Coordinates	
Northing	<u>190457.1176</u>
Easting	<u>540013.5765</u>
Date	<u>3/21/06</u>

I hereby certify that this United States public land survey monument record is correct and complete to the best of my knowledge and belief.

*Larry D. Hoium* Date 1/30/06

Larry D. Hoium, Anoka County Surveyor

Minnesota License Number 18165

37 EAST 1.298

11:09 298

# CERTIFICATE OF LOCATION OF GOVERNMENT CORNER

County of Anoka

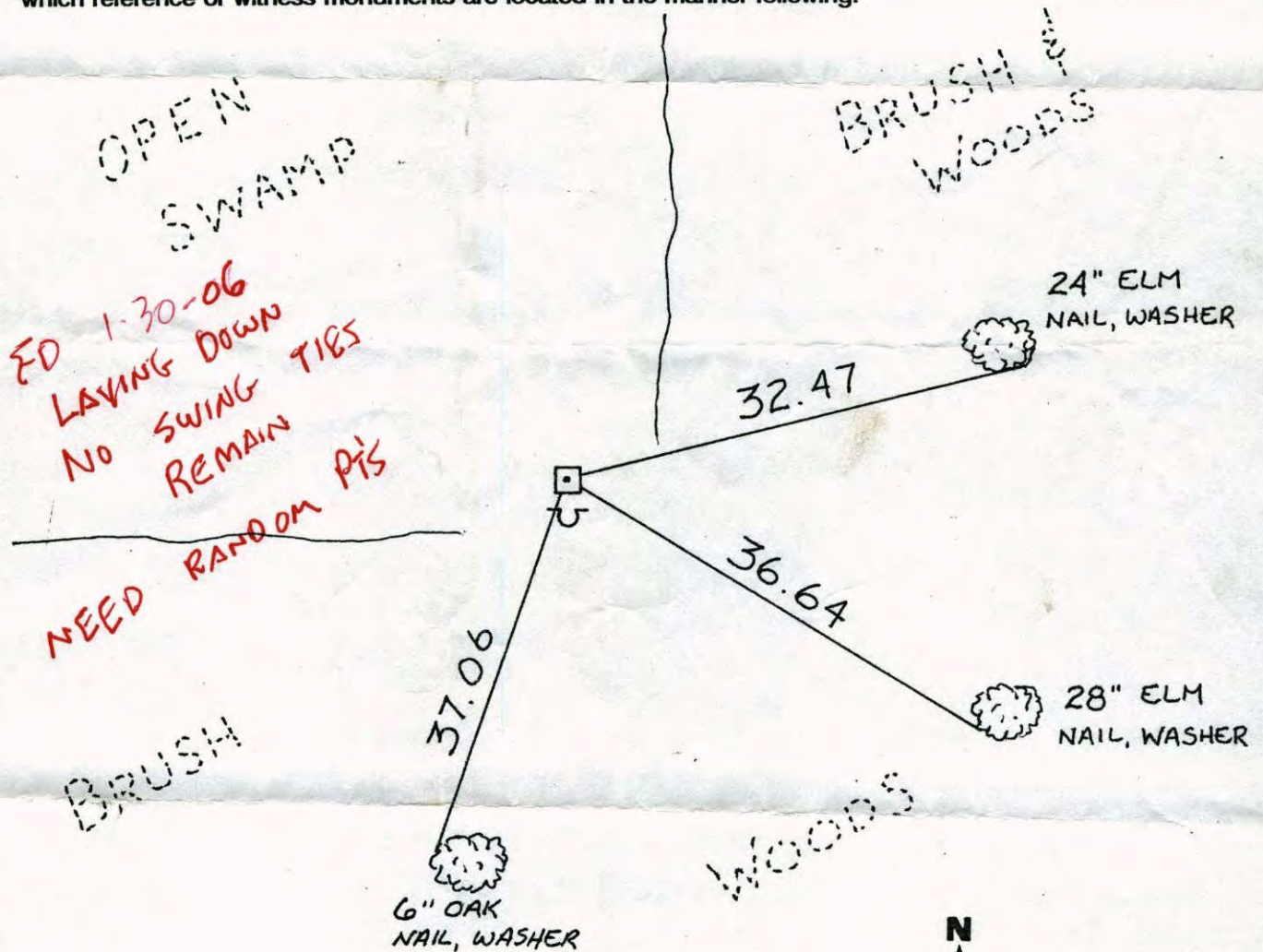
State of Minnesota

SOUTH QTR Corner of Sec. 5 Township 32 Range 22

I hereby certify that on the 2 day of FEB., 1977, I found the described corner which was evidenced by CONCRETE MONUMENT

and I further certify that to perpetuate the location of said corner, I did, at the exact location thereof, place a permanent marker consisting of CONCRETE MON.

which reference or witness monuments are located in the manner following:



Revised date	Revised date	Revised date
8-17-95		



218-927-6990

# CERTIFICATE OF LOCATION OF GOVERNMENT CORNER

County of Anoka

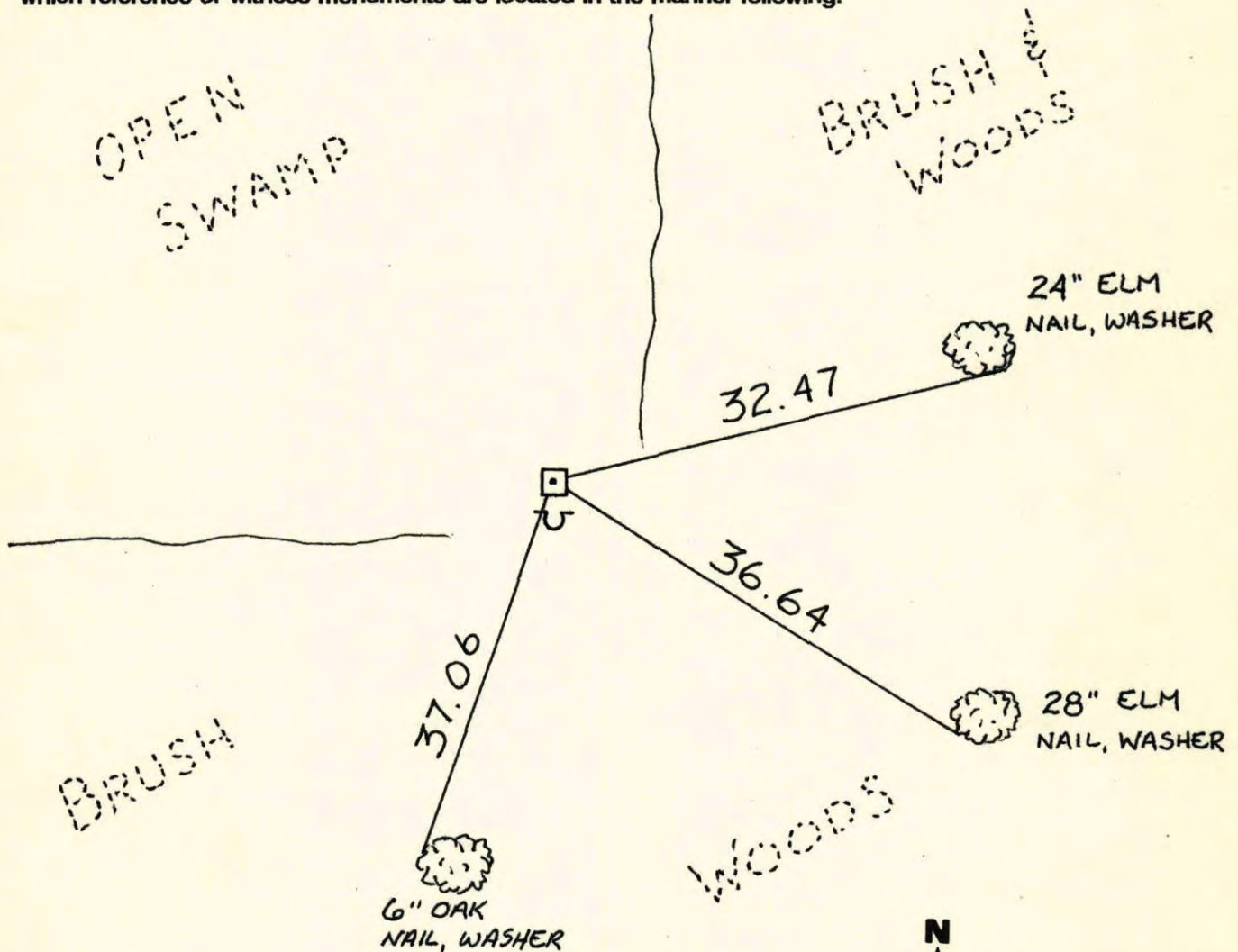
State of Minnesota

SOUTH QTR. Corner of Sec. 5 Township 32 Range 22

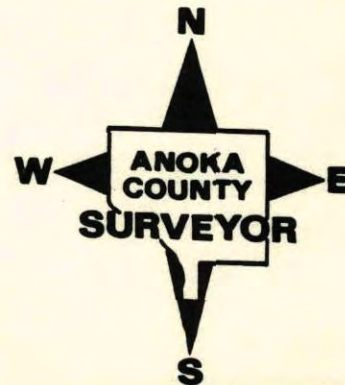
I hereby certify that on the 2 day of FEB., 19 77, I found the described corner which was evidenced by CONCRETE MONUMENT

and I further certify that to perpetuate the location of said corner, I did, at the exact location thereof, place a permanent marker consisting of CONCRETE MON.

which reference or witness monuments are located in the manner following:

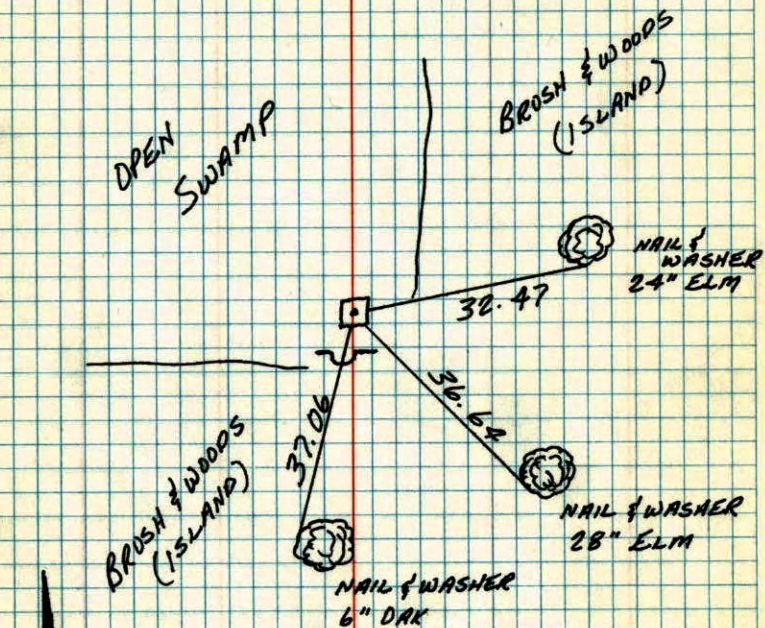


Revised date	Revised date	Revised date
8-17-95		



## 5 1/4 COR. SEC. 5, T32, R22

FOUND CONCRETE MONUMENT

PLACED WARNING SIGN 1'± SOUTH OF  
CONCRETE MONUMENT.

FEB 2, 1977  
M. O. ANDERSON  
R. W. BERTLESON  
M. J. AUNE

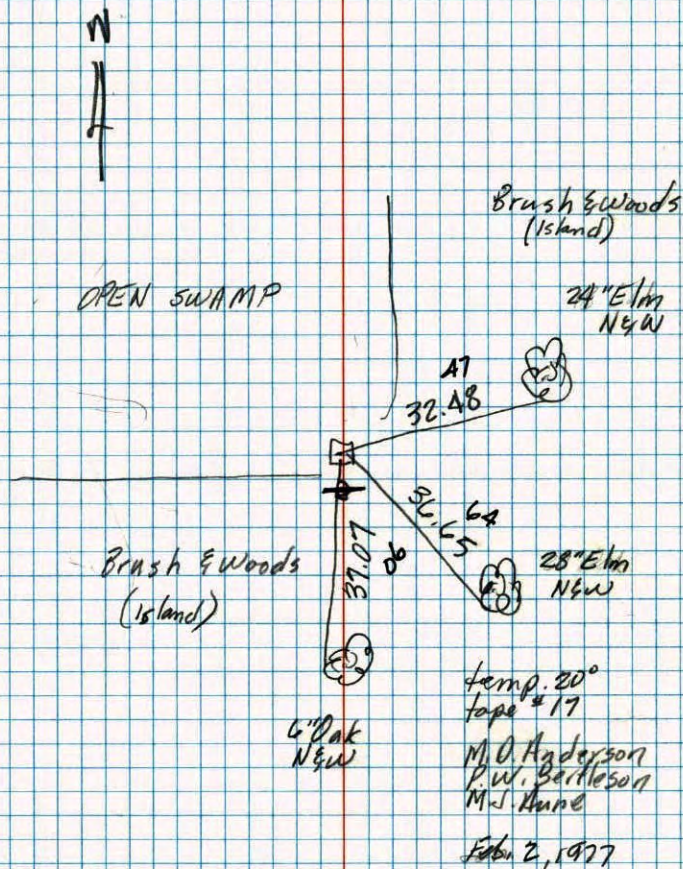
TEMPERATURE CORRECTED  
AND HORIZONTALLY  
TAPED MEASUREMENTS

ROLAND W. ANDERSON  
COUNTY SURVEYOR  
ANOKA COUNTY, MINNESOTA

## 5 1/4 Cor. Sec. 5-T 32-R 22

Found Conc. Mon.

Placed warning sign 1'± S. of Conc. Mon.



Temp. 20°  
tape # 17

M. O. Anderson  
R. W. Bertleson  
M. J. Aune

Feb 2, 1977