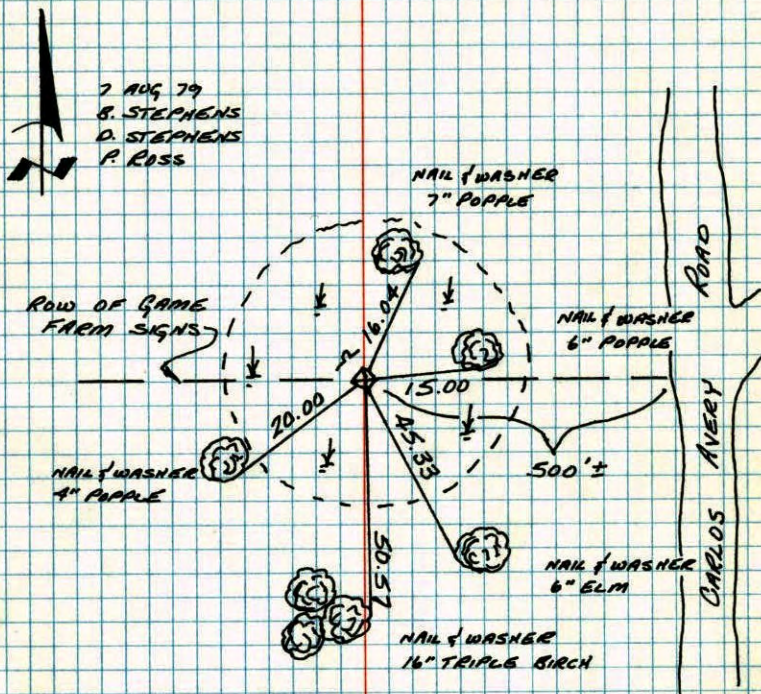


S 1/4 CORNER OF THE SE 1/4 SECTION 6
T32 - R22

RETIRO CONCRETE MONUMENT FOUND BY MR. ANDERSON
WARNING SIGN AND FENCE POST 1' N.W. OF MONUMENT



TEMPERATURE CORRECTED
AND HORIZONTALLY
TAPED MEASUREMENTS

ROLAND W. ANDERSON
COUNTY SURVEYOR
ANOKA COUNTY, MINNESOTA

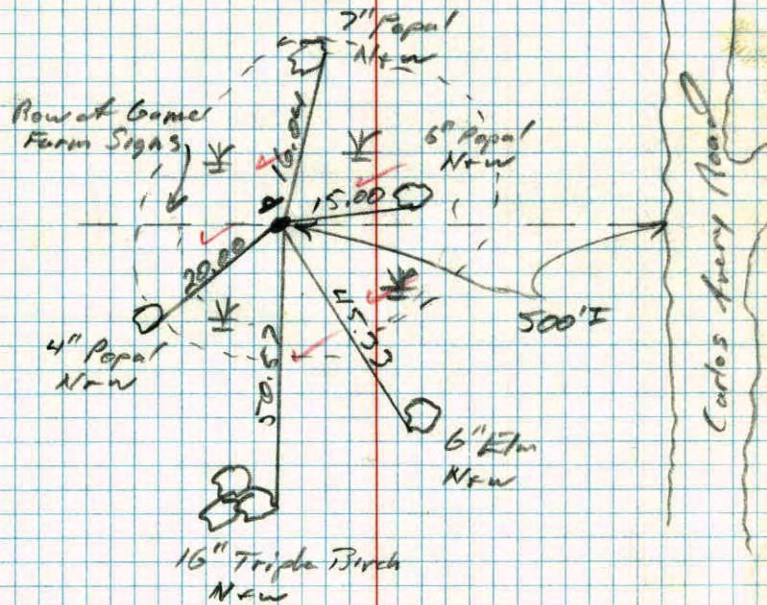
S 1/4 Cor. of the SE 1/4 of Sec. 6 - T32 - R22

Found Concrete Monument up 1'±

Placed warning sign & steel fence post
Sign & post 1'± NW of monument

3-17-77
M. D. Anderson
P. W. Bertleson
M. W. Anne

All new ties
8-7-79
B. Stephens
D. Stephens
P. Ross
#2 840

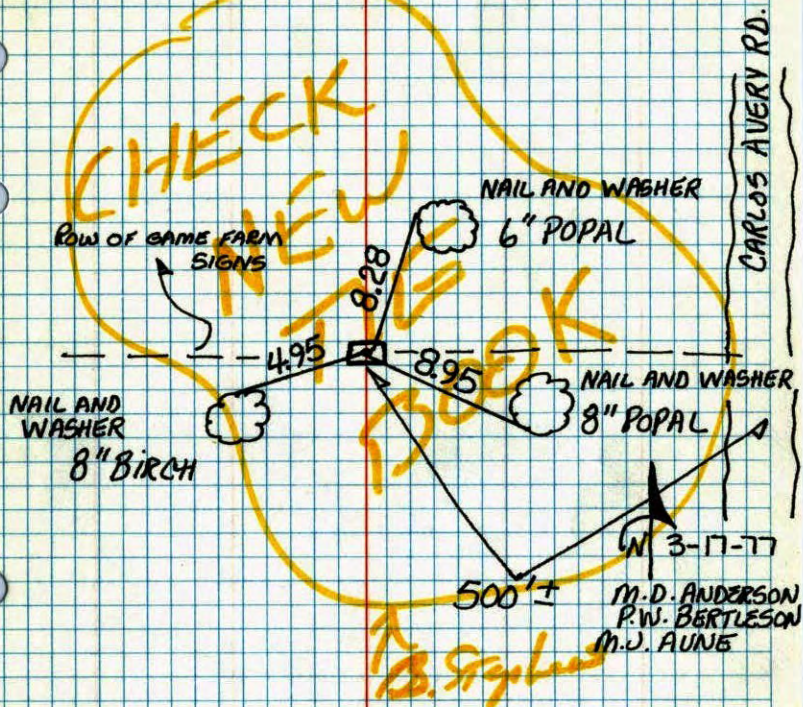


NO. 448

TELEPHONE

S. 1/16 COR. OF THE S.E. 1/4 SEC. 6 T. 32 R. 22

FOUND CONCRETE MONUMENT UP 1'±.
 PLACED WARNING SIGN AND STEEL FENCE POST.
 SIGN AND POST 1'± N.W. OF MONUMENT.

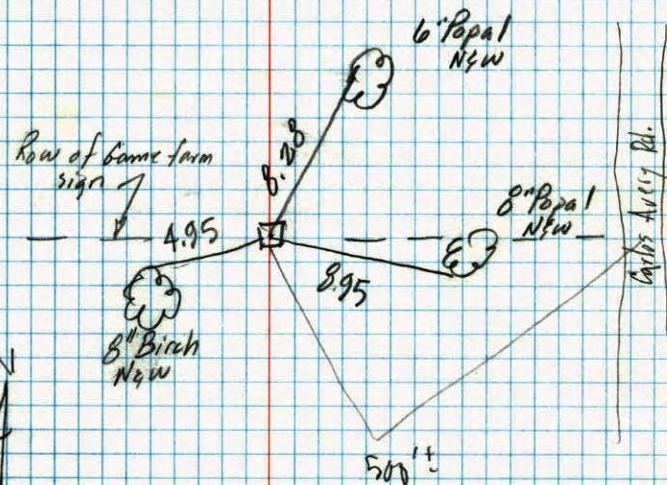


TEMPERATURE CORRECTED
 AND HORIZONTALLY
 TAPED MEASUREMENTS

ROLAND W. ANDERSON
 COUNTY SURVEYOR
 ANOKA COUNTY, MINNESOTA

S. 1/16th Cor. of the S.E. 1/4 Sec. 6 - T 32 - R 22

Found Conc. Mon (up 1'±)
 Placed warning sign & steel sign post (1'± N.W. of Mon.)



Mar. 17, 1977

M.D. Anderson
 P.W. Bertleson
 M.J. Aune

Temp. 35°
 Taped 17