

CERTIFICATE OF LOCATION OF GOVERNMENT CORNER

County of Anoka

State of Minnesota

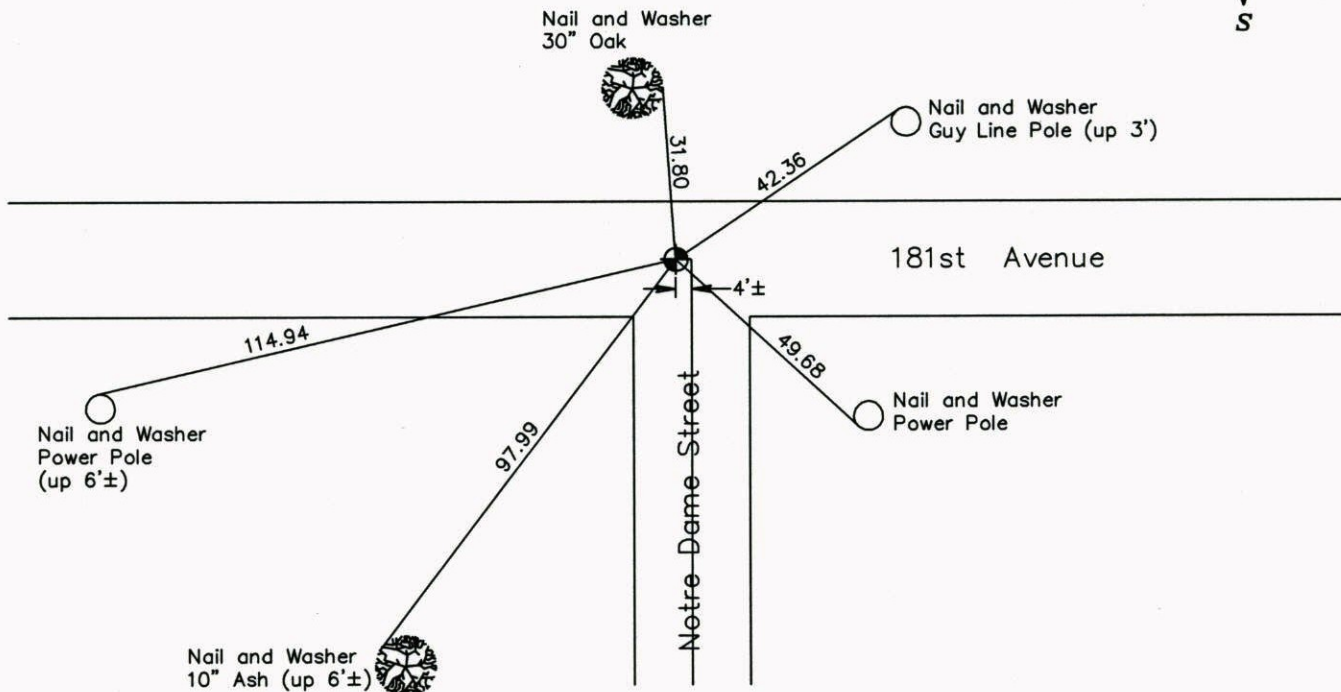
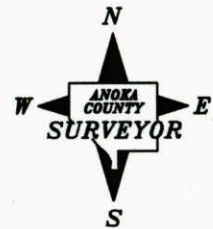
North $\frac{1}{4}$ Corner of Sec. 2 Township 32 Range 22

On the day of May, 1965, the described corner was evidenced by a broken off Cast Iron Monument over a 6" square stone

and to perpetuate the location of said corner, at the exact location thereof, a permanent marker was placed consisting of a Cast Iron Monument

AND on the 5th day of November, 2007, said permanent marker was found and the ties were updated.

Updated reference ties are as shown below.



Revised date
8/10/95
11/5/07

N.A.D. 1983 Coordinates (1996 Adjustment)	
County Project Coordinates	
Northing	195508.4252
Easting	555751.9940
Date	6/17/03

I hereby certify that this United States public land survey monument record is correct and complete to the best of my knowledge and belief.

Date 11/5/07

Larry D. Hoium, Anoka County Surveyor
 Minnesota License Number 18165

CERTIFICATE OF LOCATION OF GOVERNMENT CORNER

County of Anoka

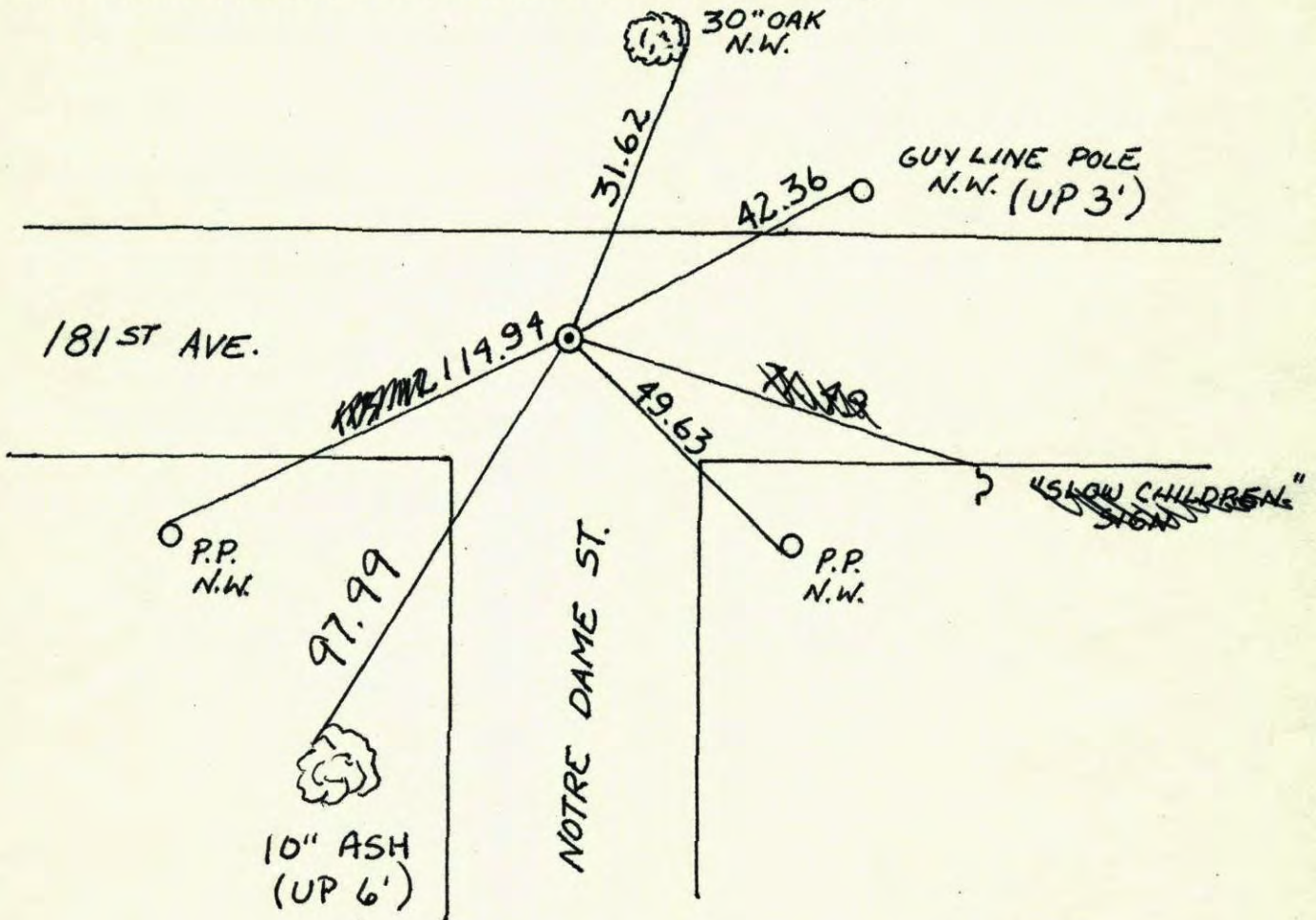
State of Minnesota

NORTH QTR. Corner of Sec. 2 Township 32 Range 22

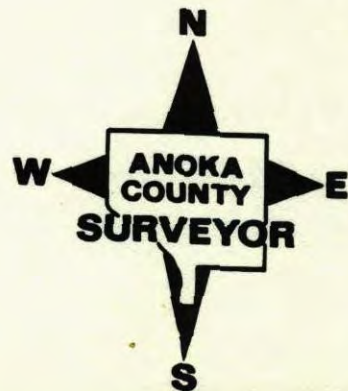
I hereby certify that on the ___ day of MAY, 1965, I found the described corner which was evidenced by BROKEN CAST IRON MON., OVER STONE (6" SQUARE)

and I further certify that to perpetuate the location of said corner, I did, at the exact location thereof, place a permanent marker consisting of CAST IRON PKS' 2.00' N. AND E.

which reference or witness monuments are located in the manner following:



Revised date	Revised date	Revised date
8-10-95		
11-5-07		



CERTIFICATE OF LOCATION OF GOVERNMENT CORNER

County of Anoka

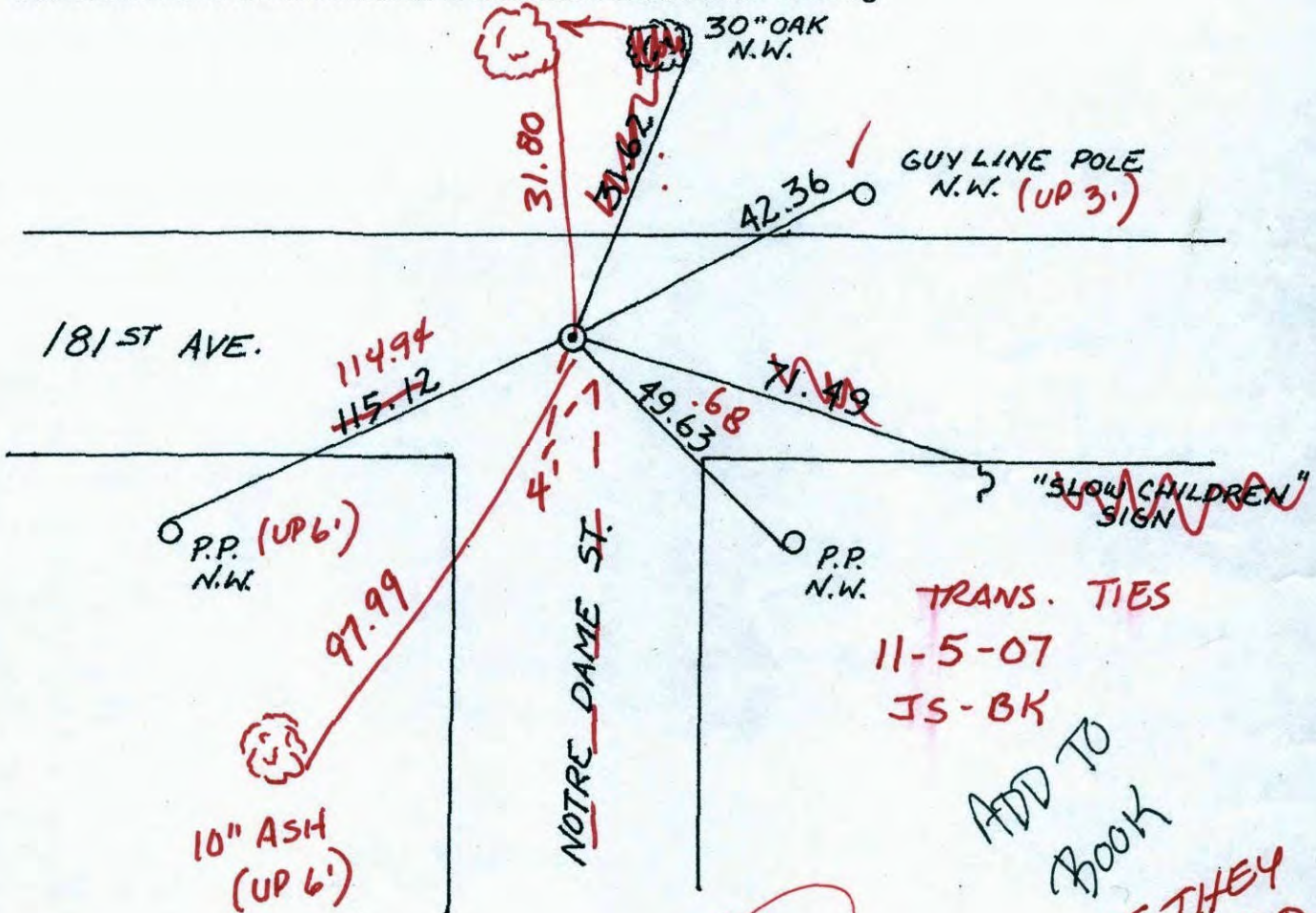
State of Minnesota

NORTH QTR. Corner of Sec. 2 Township 32 Range 22

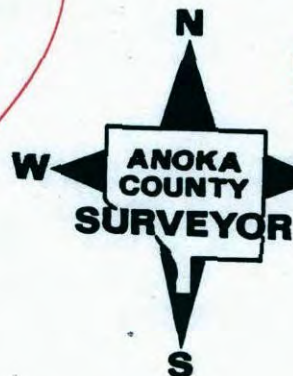
I hereby certify that on the day of MAY, 1965, I found the described corner which was evidenced by BROKEN CAST IRON MON., OVER STONE (6" SQUARE)

and I further certify that to perpetuate the location of said corner, I did, at the exact location thereof, place a permanent marker consisting of CAST IRON PKS' 2.00' N. AND E.

which reference or witness monuments are located in the manner following:



ADD

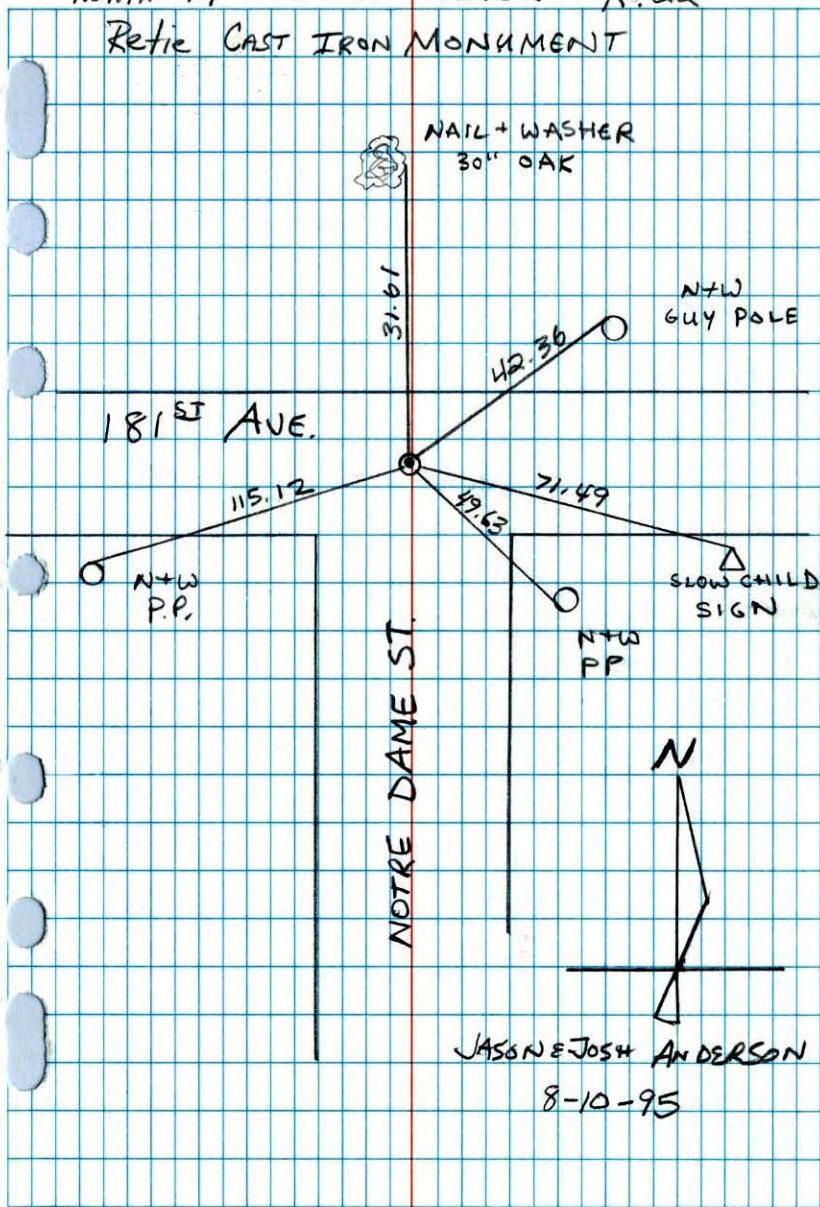


IF THEY READ "ADD TO BOOK" I JUST ADDED THEM TO THE ORIGINAL BOOK

Revised date	Revised date	Revised date
8-10-95		

NORTH 1/4 SEC. 2 T. 32 R. 22

Retie CAST IRON MONUMENT

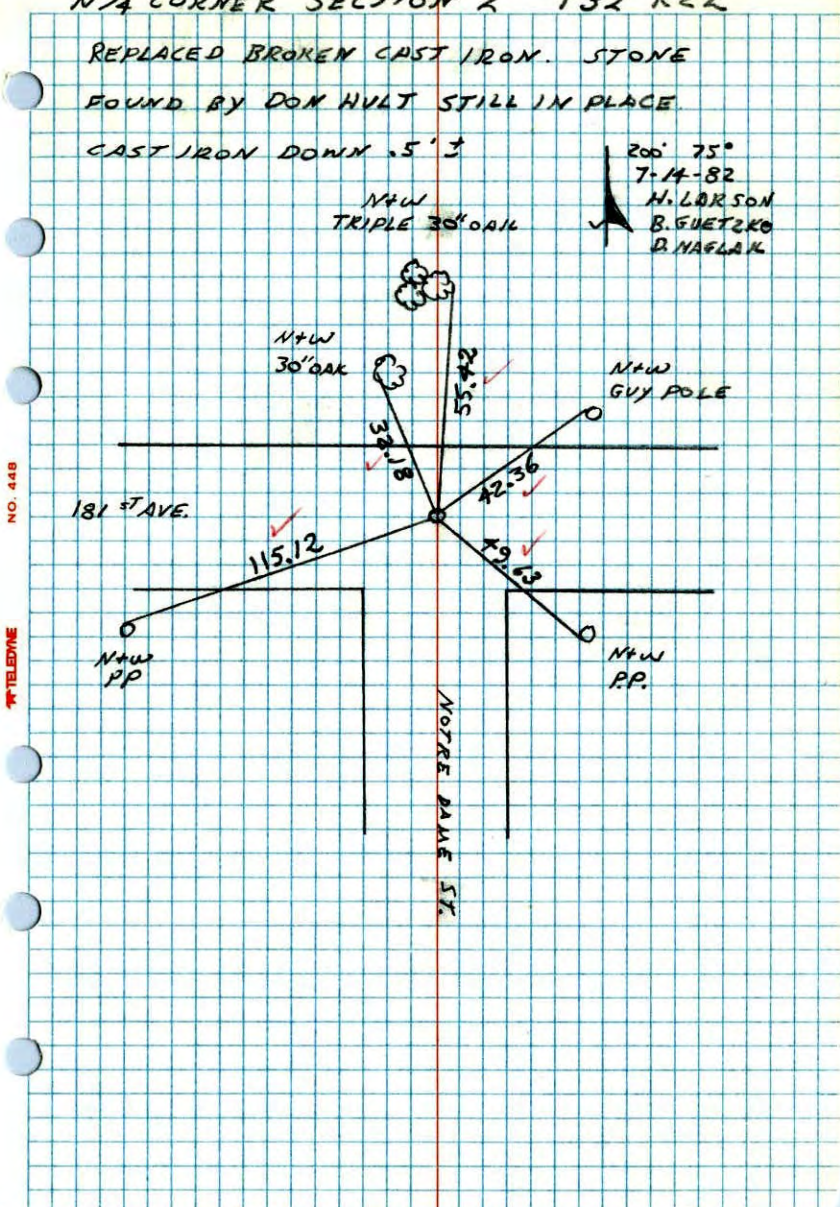


N 1/4 CORNER SECTION 2 T32 R22

REPLACED BROKEN CAST IRON. STONE

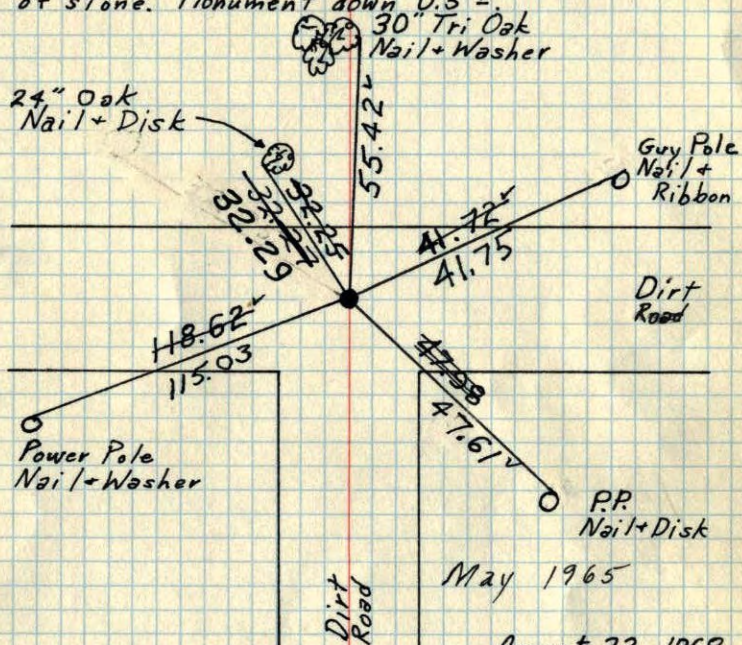
FOUND BY DON HULT STILL IN PLACE

CAST IRON DOWN .5' J



N 1/4 Cor. Sec. 2 T32 R22

6" square stone Found by Don C. Hult.
down 1.3'. Set Cast Iron Monument on top
of stone. Monument down 0.5'±.



Ties Checked
June 5, 1973
B. Olson
D. Brien
D. Farmer

August 22, 1968
D. Powell
R. Olson
P. Pich

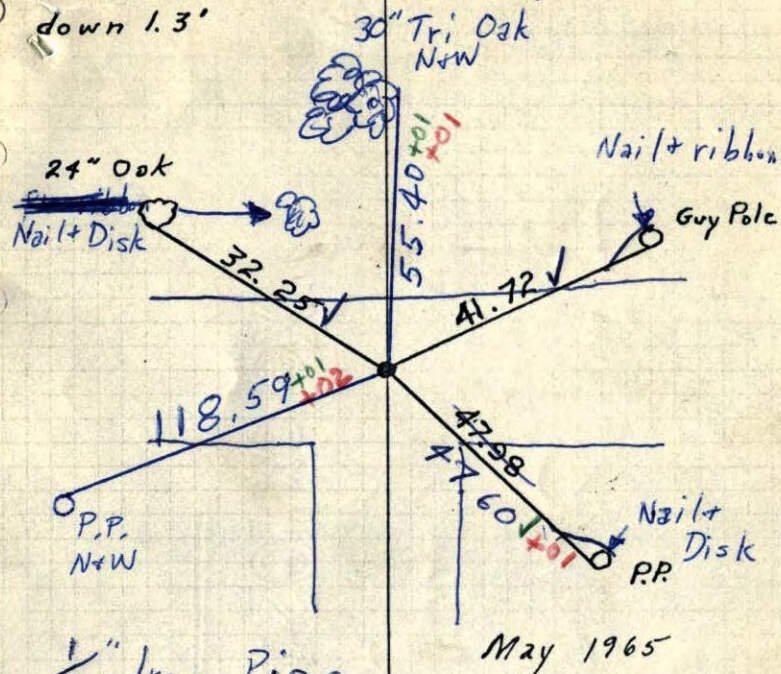
TIECHECK
8-3-76
G. ADAMS
S. BRIEN
J. STEPHEN

TEMPERATURE CORRECTED
AND HORIZONTALLY
TAPED MEASUREMENTS

ROLAND W. ANDERSON
COUNTY SURVEYOR
ANOKA COUNTY, MINNESOTA

N 1/4 Cor. Sec. 2 T32 R22

6" square stone Found by Don C. Hult.
down 1.3'



1/2" Iron Pipe
directly over center of
stone. Iron Pipe down 0.4'±.
3" x 6" Stone down 1.4'±.

Set C.I. Mon.
on top of
stone.

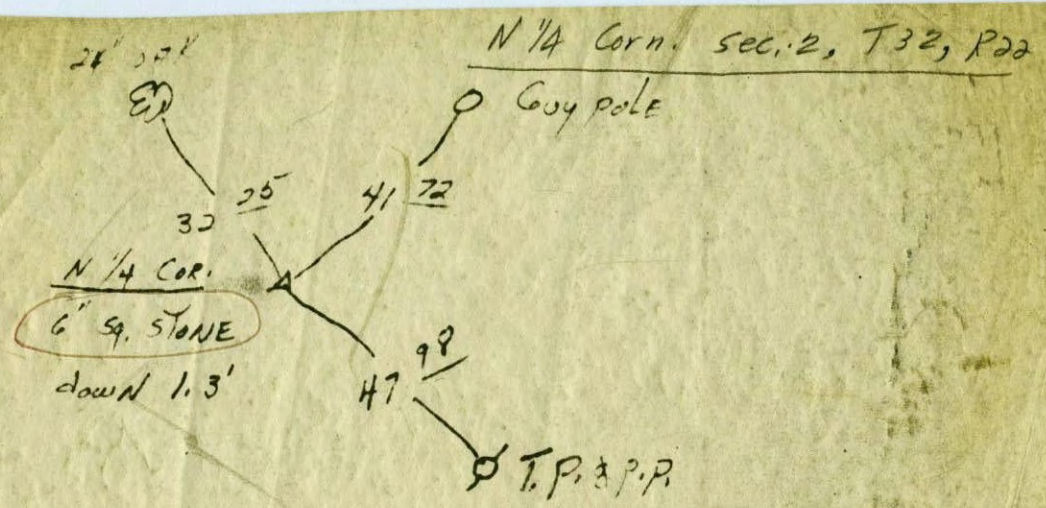
C.I. down 0.5'±.

8/22/68

✓ #6 - 95° ✓

D. Powell
R. Olson
P. Pich





Don C. Hult
May 1965