

CERTIFICATE OF LOCATION OF GOVERNMENT CORNER

County of Anoka

State of Minnesota

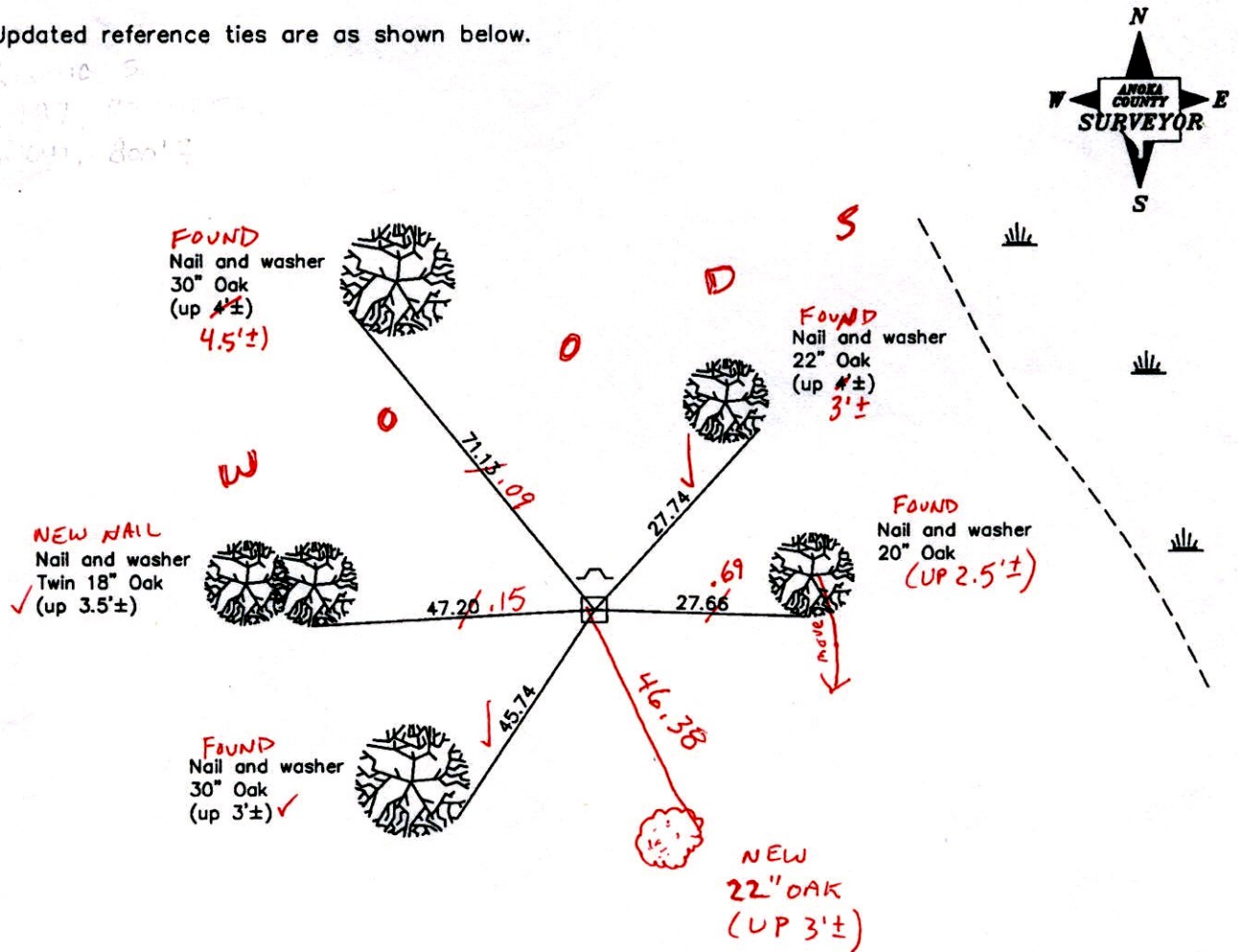
West 1/4 Corner of Sec. 9 Township 32 Range 22

On the 24th day of November, 1976, the described corner was evidenced by a concrete monument

and to perpetuate the location of said corner, at the exact location thereof, a permanent marker was placed consisting of the same concrete monument SIGN & POST ON N. SIDE FACING S.
(UP 0.5'±)

AND on the 21st day of February, 2006, said permanent marker was found and the ties were updated

Updated reference ties are as shown below.



12-3-14
BK-55
TAPED

Revised date
8/17/95
3/10/97
2/21/06

N.A.D. 1983 Coordinates (1996 Adjustment)	
County Project Coordinates	
Northing	187836.3103
Easting	542700.7214
Date	2/21/06

I hereby certify that this United States public land survey monument record is correct and complete to the best of my knowledge and belief.

Larry D. Hoium Date 2/21/06
 Larry D. Hoium, Anoka County Surveyor
 Minnesota License Number 18165

CERTIFICATE OF LOCATION OF GOVERNMENT CORNER

County of Anoka

State of Minnesota

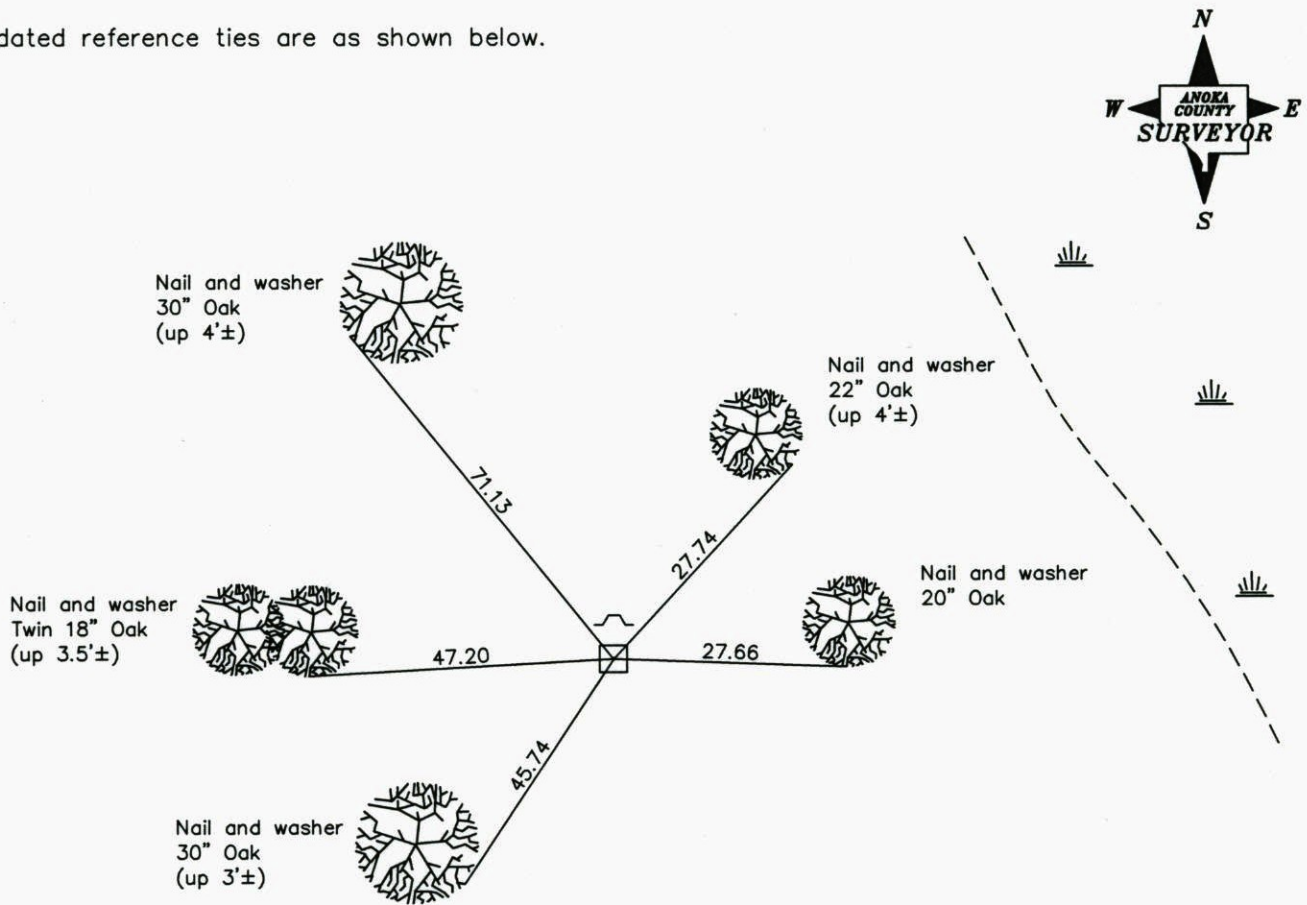
West 1/4 Corner of Sec. 9 Township 32 Range 22

On the 24th day of November, 1976, the described corner was evidenced by a concrete monument

and to perpetuate the location of said corner, at the exact location thereof, a permanent marker was placed consisting of the same concrete monument

AND on the 21st day of February, 2006, said permanent marker was found and the ties were updated

Updated reference ties are as shown below.



Revised date

8/17/95
3/10/97
2/21/06

**N.A.D. 1983 Coordinates
(1996 Adjustment)**

County Project Coordinates
Northing <u>187836.3103</u>
Easting <u>542700.7214</u>
Date <u>2/21/06</u>

I hereby certify that this United States public land survey monument record is correct and complete to the best of my knowledge and belief.

Larry D. Hoium Date 2/21/06
 _____, Anoka County Surveyor
 Minnesota License Number 18165

CERTIFICATE OF LOCATION OF GOVERNMENT CORNER

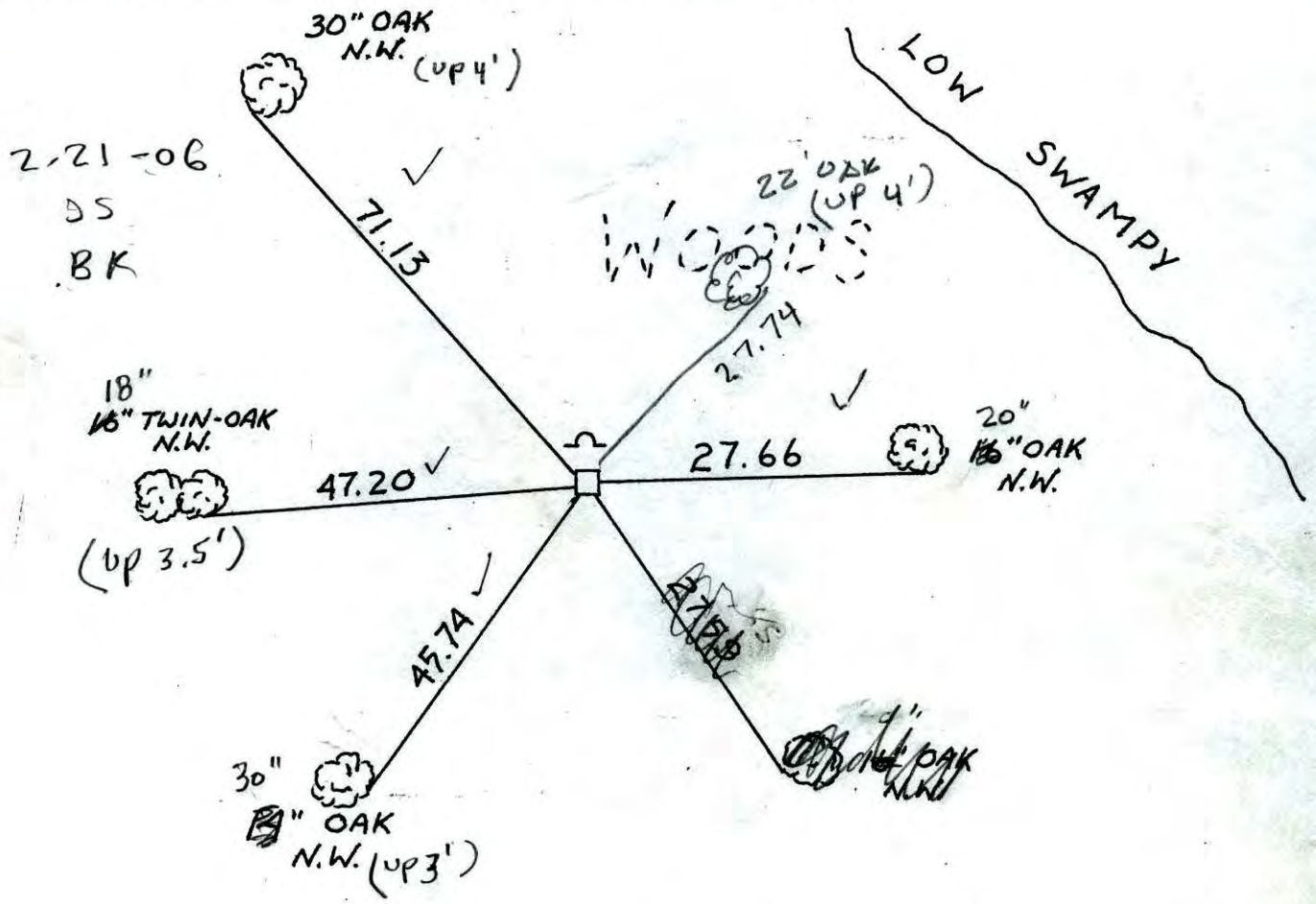
County of Anoka State of Minnesota

WEST QTR. Corner of Sec. 9 Township 32 Range 22

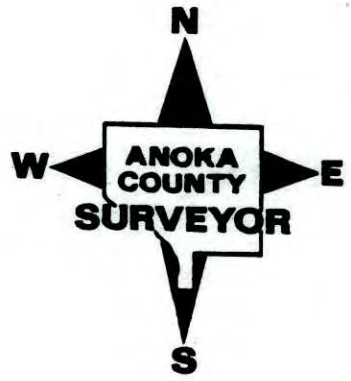
I hereby certify that on the 24 day of Nov., 19 76, I found the described corner which was evidenced by CONCRETE MON.

and I further certify that to perpetuate the location of said corner, I did, at the exact location thereof, place a permanent marker consisting of SAME

which reference or witness monuments are located in the manner following:



Revised date	Revised date	Revised date
8-17-95		
3-10-97		



CERTIFICATE OF LOCATION OF GOVERNMENT CORNER

County of Anoka

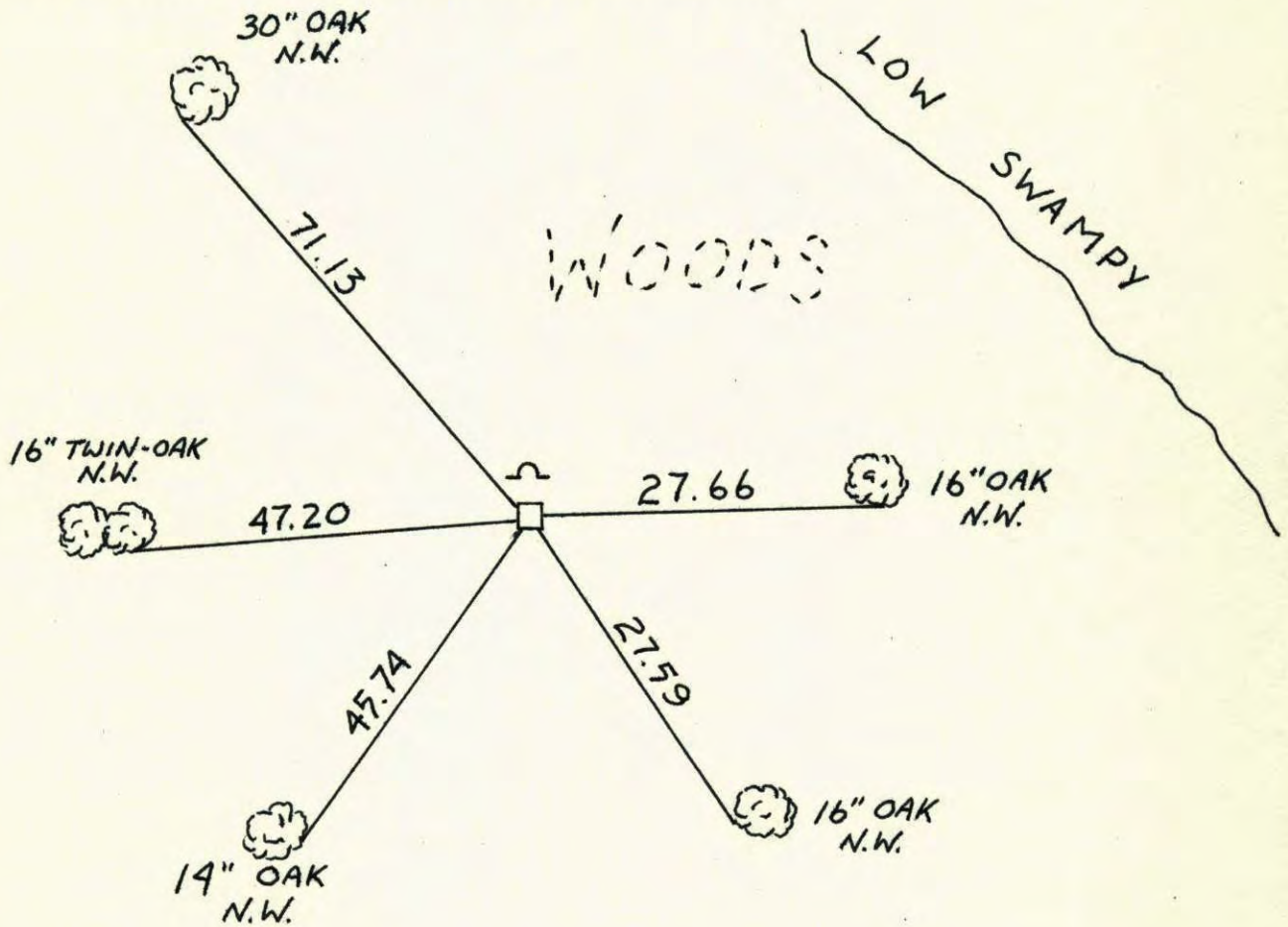
State of Minnesota

WEST QTR. Corner of Sec. 9 Township 32 Range 22

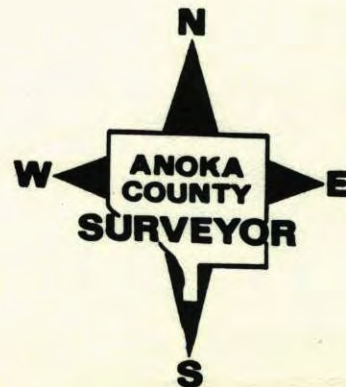
I hereby certify that on the 24 day of NOV., 19 76, I found the described corner which was evidenced by CONCRETE MON.

and I further certify that to perpetuate the location of said corner, I did, at the exact location thereof, place a permanent marker consisting of SAME

which reference or witness monuments are located in the manner following:

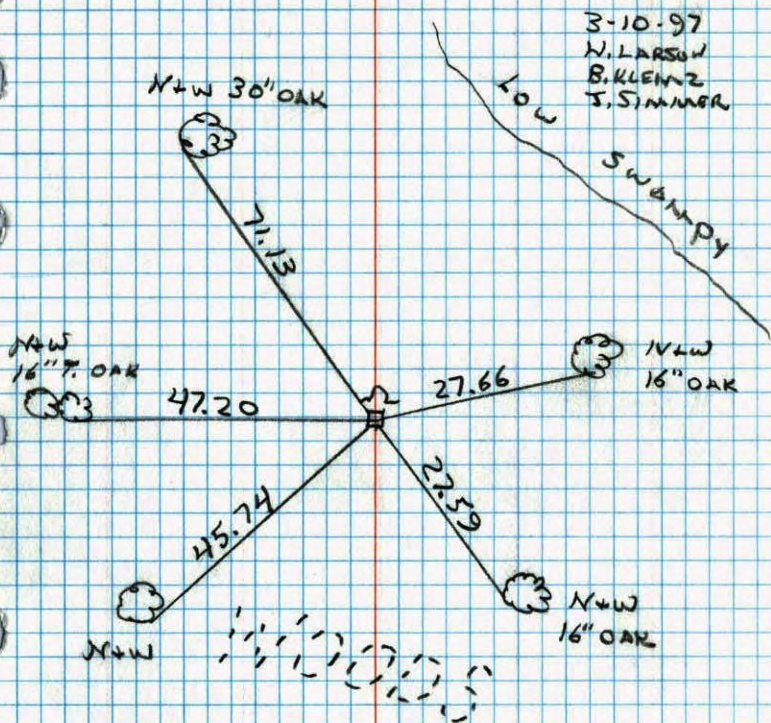


Revised date	Revised date	Revised date
8-17-95		
3-10-97		



W 1/4 COR. SECTION 9 T32 R22

RETIED CONCRETE MONI PLACED
SIGN + POST ON NORTH SIDE

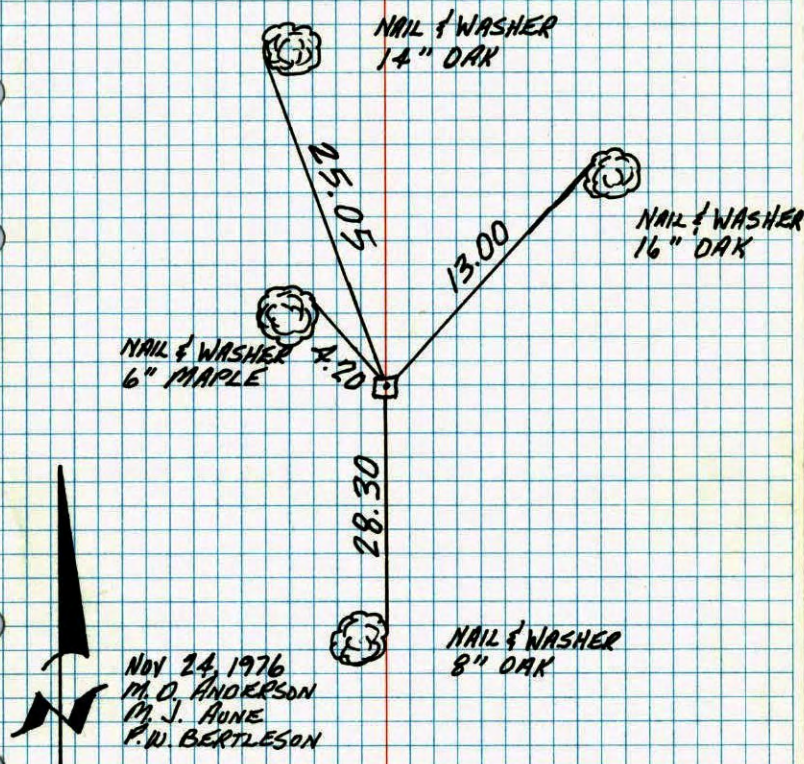


NO. 448

TELEPHONE

W 1/4 COR. SEC. 9, T32, R22

FOUND CONCRETE MONUMENT - UP 8" ±

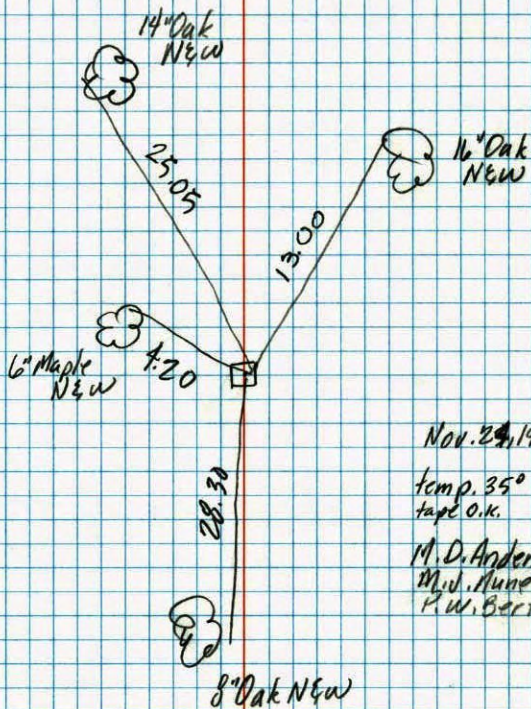


TEMPERATURE CORRECTED
AND HORIZONTALLY
TAPED MEASUREMENTS

ROLAND W. ANDERSON
COUNTY SURVEYOR
ANOKA COUNTY, MINNESOTA

West 1/4 Cor. Sec. 9-T32-R22

found Conc. Mon - up 8"±



Nov. 24, 1976

temp. 35°
tape O.K.

M. D. Anderson
M. V. Munn
P. W. Berleson