

CERTIFICATE OF LOCATION OF GOVERNMENT CORNER

County of Anoka

State of Minnesota

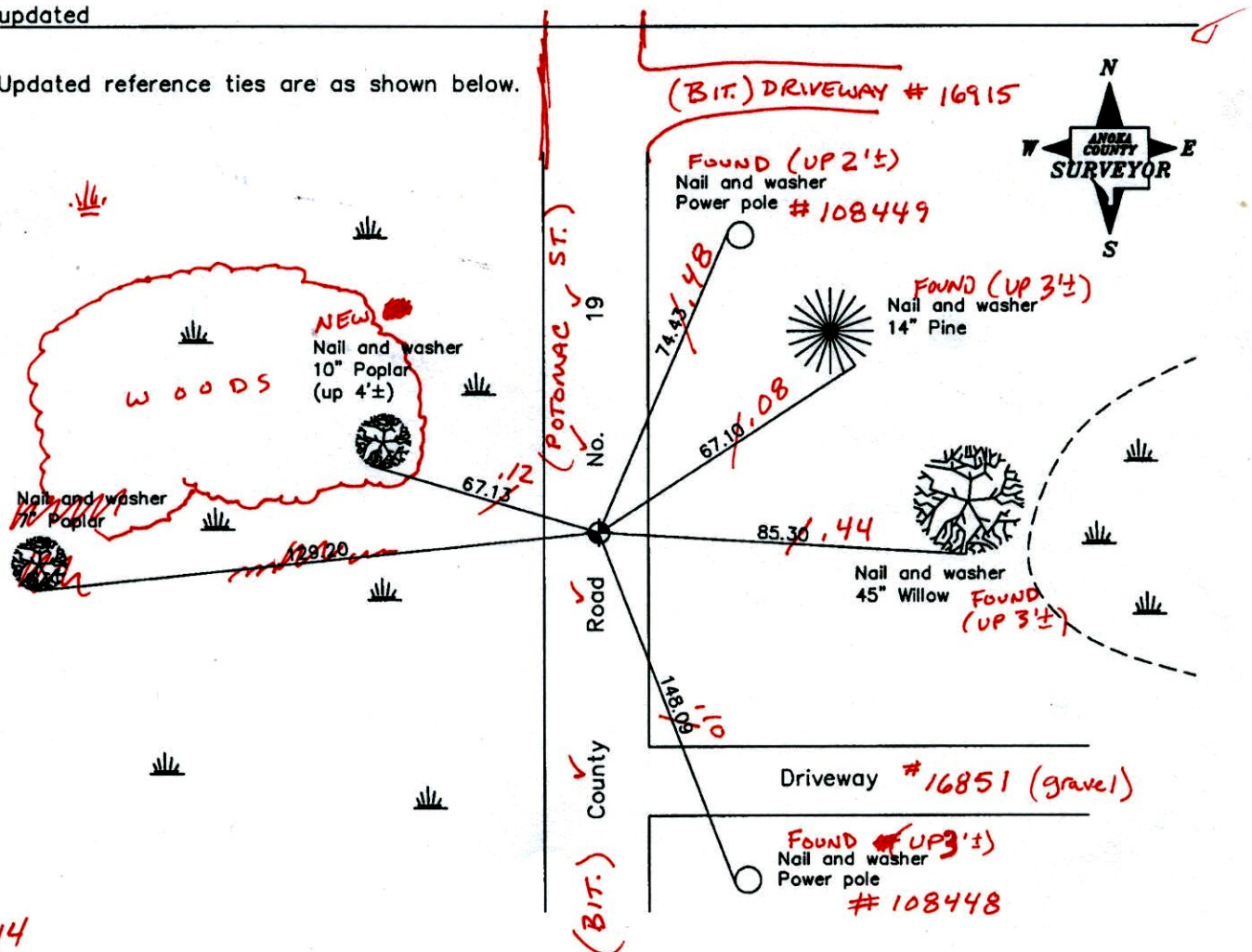
East 1/4 Corner of Sec. 9 Township 32 Range 22

On the 18th day of September, 1964, the described corner was evidenced by a 1/2" iron pipe

and to perpetuate the location of said corner, at the exact location thereof, a permanent marker was placed consisting of a cast iron monument (1'± E. OF E)

AND on the 14th day of November, 2007, said permanent marker was found and the ties were updated

Updated reference ties are as shown below.



9-26-14
BK-55
TOTAL STA.
VRS

Revised date
8/14/95
8/26/97
11/14/07

N.A.D. 1983 Coordinates (1996 Adjustment)	
County Project Coordinates	
Northing	187836.1133
Easting	547954.7386
Date	6/23/03

I hereby certify that this United States public land survey monument record is correct and complete to the best of my knowledge and belief.

Larry D. Hoium Date 11/14/07

Larry D. Hoium, Anoka County Surveyor

Minnesota License Number 18165

3DQ = 0.08 N = 187836.0936 E = 547954.7408

CERTIFICATE OF LOCATION OF GOVERNMENT CORNER

County of Anoka

State of Minnesota

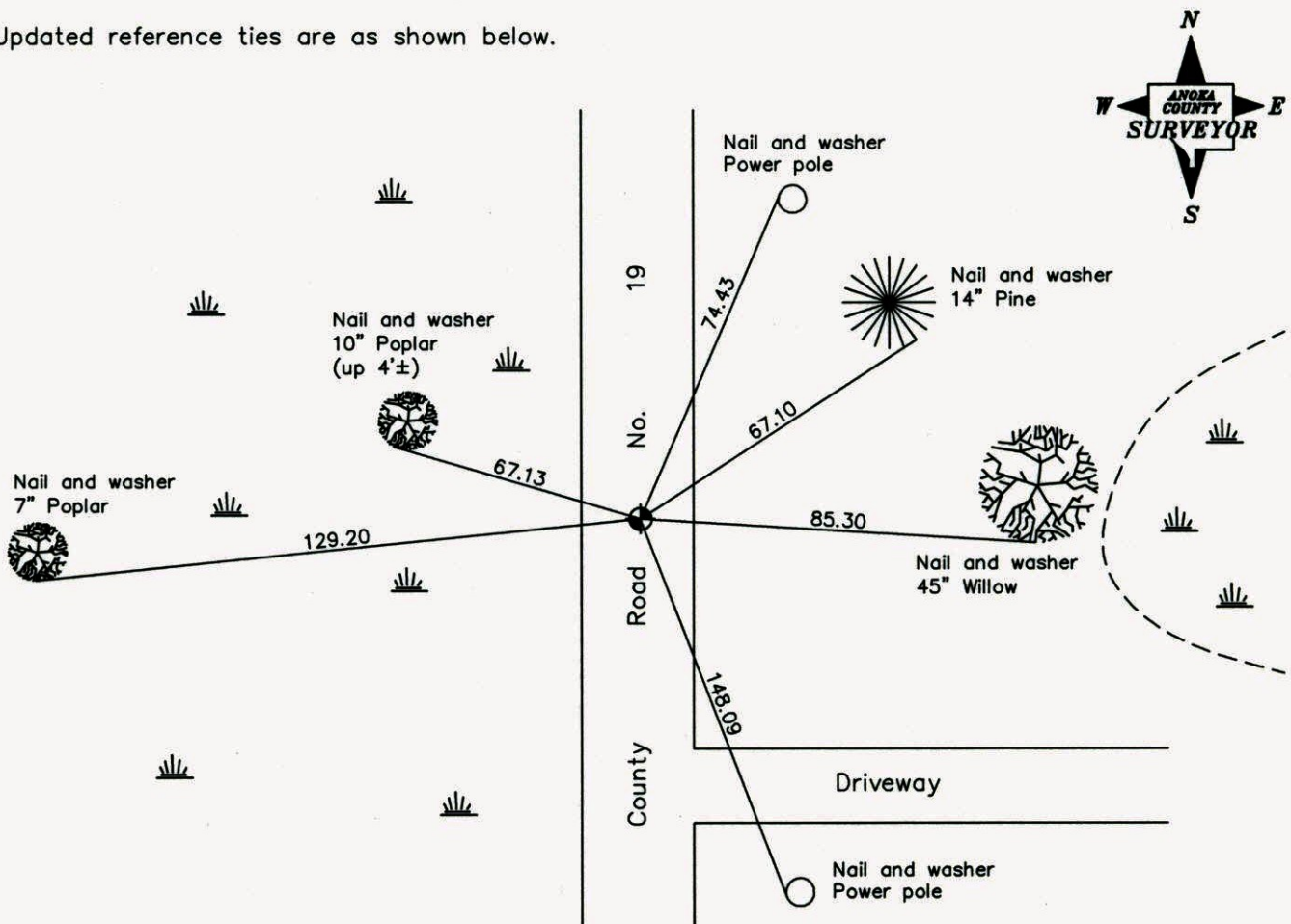
East 1/4 Corner of Sec. 9 Township 32 Range 22

On the 18th day of September, 1964, the described corner was evidenced by a 1/2" iron pipe

and to perpetuate the location of said corner, at the exact location thereof, a permanent marker was placed consisting of a cast iron monument

AND on the 14th day of November, 2007, said permanent marker was found and the ties were updated

Updated reference ties are as shown below.



Revised date

8/14/95
8/26/97
11/14/07

**N.A.D. 1983 Coordinates
(1996 Adjustment)**

County Project Coordinates
Northing <u>187836.1133</u>
Easting <u>547954.7386</u>
Date <u>6/23/03</u>

I hereby certify that this United States public land survey monument record is correct and complete to the best of my knowledge and belief.

Larry D. Hoium Date 11/14/07

Larry D. Hoium, Anoka County Surveyor
Minnesota License Number 18165

CERTIFICATE OF LOCATION OF GOVERNMENT CORNER

County of Anoka

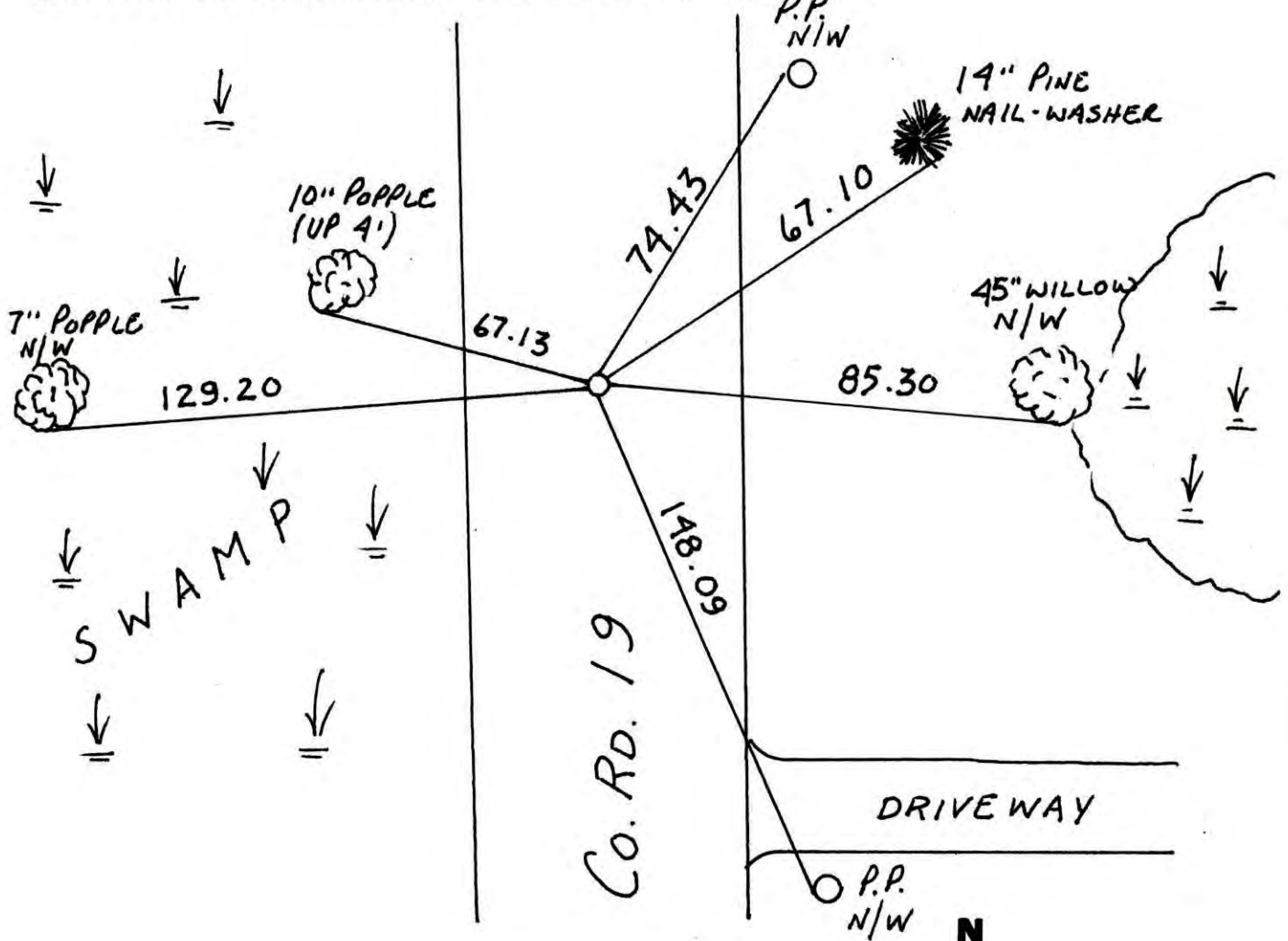
State of Minnesota

EAST 1/4 Corner of Sec. 9 Township 32 Range 22

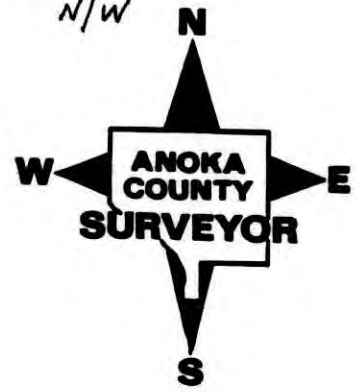
I hereby certify that on the 18 day of SEPT., 1964, I found the described corner which was evidenced by 1/2" I. P.

and I further certify that to perpetuate the location of said corner, I did, at the exact location thereof, place a permanent marker consisting of CAST IRON MON.

which reference or witness monuments are located in the manner following:



Revised date	Revised date	Revised date
8-9-89		
8-14-95		
8-26-97		
11-14-07		



CERTIFICATE OF LOCATION OF GOVERNMENT CORNER

County of Anoka

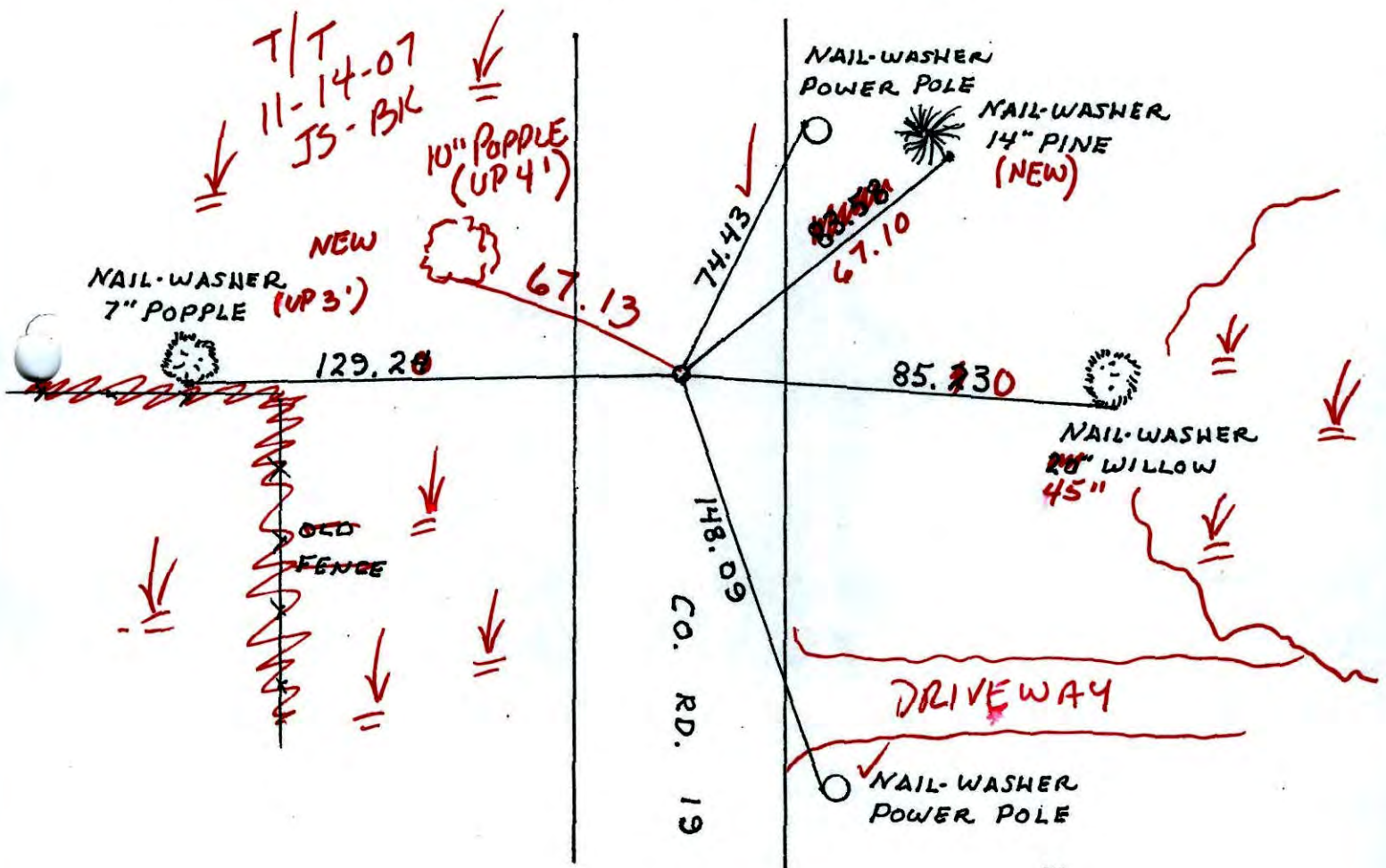
State of Minnesota

EAST 1/4 Corner of Sec. 9 Township 32 Range 22

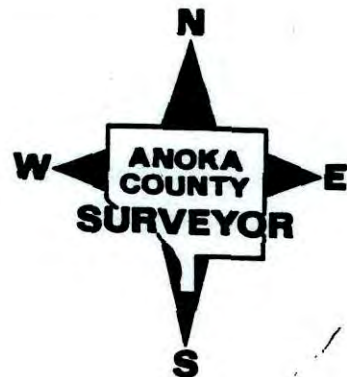
I hereby certify that on the 18 day of SEPT, 19 64, I found the described corner which was evidenced by 1/2" IRON PIPE

and I further certify that to perpetuate the location of said corner, I did, at the exact location thereof, place a permanent marker consisting of CAST IRON MONUMENT

which reference or witness monuments are located in the manner following:

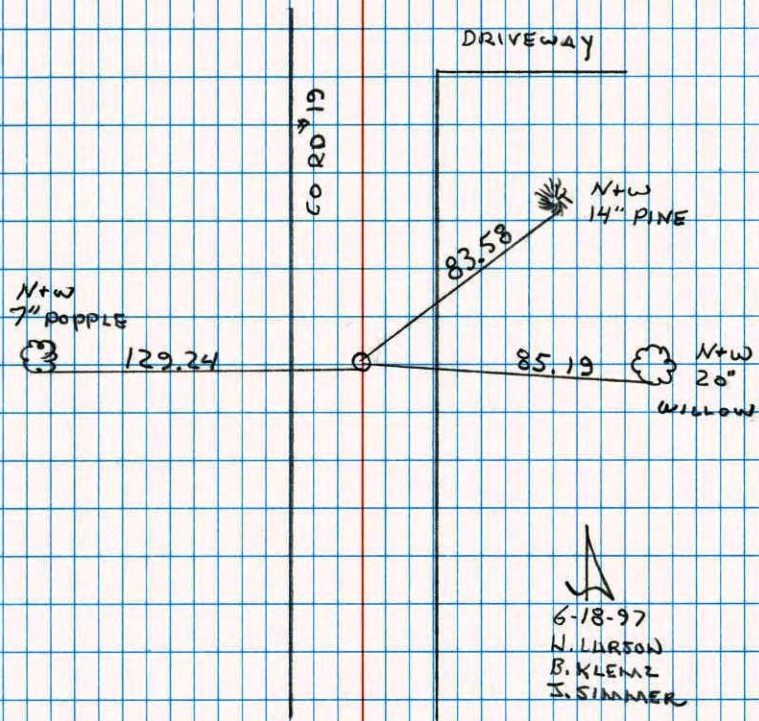


Revised date	Revised date	Revised date
8-9-89		
8-14-95		
8-26-97		
REPLACED		



E 1/4 COR. SEC. 9 T32 R22

ADDITIONAL TIES FOR CONSTRUCTION



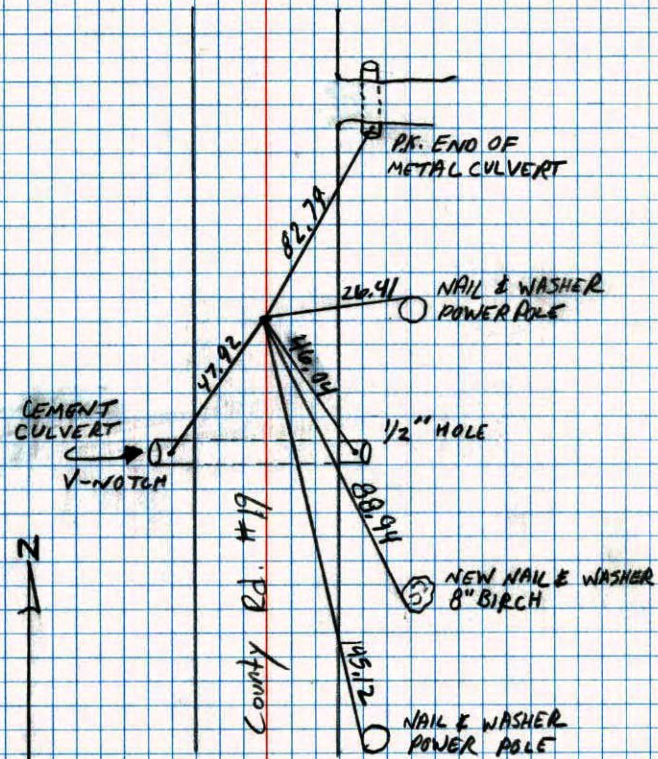
6-18-97
 N. LARSON
 B. KLENZ
 J. SIMMER

NO. 446

NATIONAL PROMAST

EAST 1/4 CORNER SEC. 9 T32 R. 22

RETIRED CAST IRON MONUMENT.



N

8-9-89
 A. SPROYER
 M. ZIMMERMAN

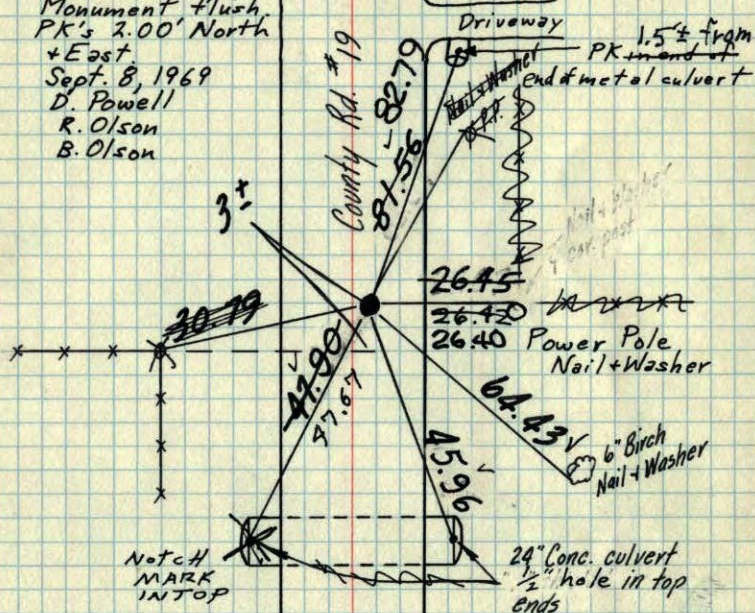
NO. 448

WYBLENNE

E 1/4 Cor. Sec. 9 T32, R. 22

1/2" Iron pipe down 0.2' and 1 1/2' East of E
 Found 1/2" Iron Pipe down 1.2' directly under other
 Iron Pipe. Replaced Irons with Cast Iron
 Monument flush
 PK's 2.00' North
 + East

Sept. 8, 1969
 D. Powell
 R. Olson
 B. Olson



TIE CHECK

8-3-79
 B. STEPHENS
 D. STEPHENS
 P. ROSS

TIE CHECK
 8-5-76
 G. ADAMS
 S. BRIEN
 J. STEPHENS

Tie Check
 June 5, 1973
 B. Olson
 D. Brien
 D. Farmer

Sept. 18, 64

M. D. Anderson
 J. Oliver
 G. Mills

TEMPERATURE CORRECTED
 AND HORIZONTALLY
 TAPED MEASUREMENTS

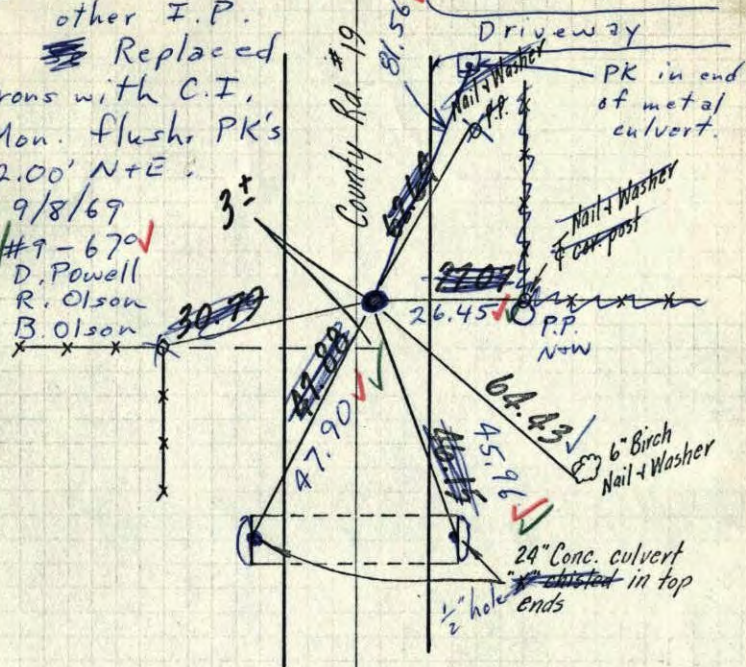
ROLAND W. ANDERSON
 COUNTY SURVEYOR
 ANOKA COUNTY, MINNESOTA

X E 1/4 Cor. Sec. 9 T32, R. 22

1/2" Iron pipe down 0.2' and 1 1/2' East of E
 Found 1/2" Iron Pipe down 1.2' directly under
 other I.P.

Replaced
 Irons with C.I.
 Mon. flush PK's
 2.00' N+E

9/8/69
 #9-670
 D. Powell
 R. Olson
 B. Olson



Sept. 18, 64

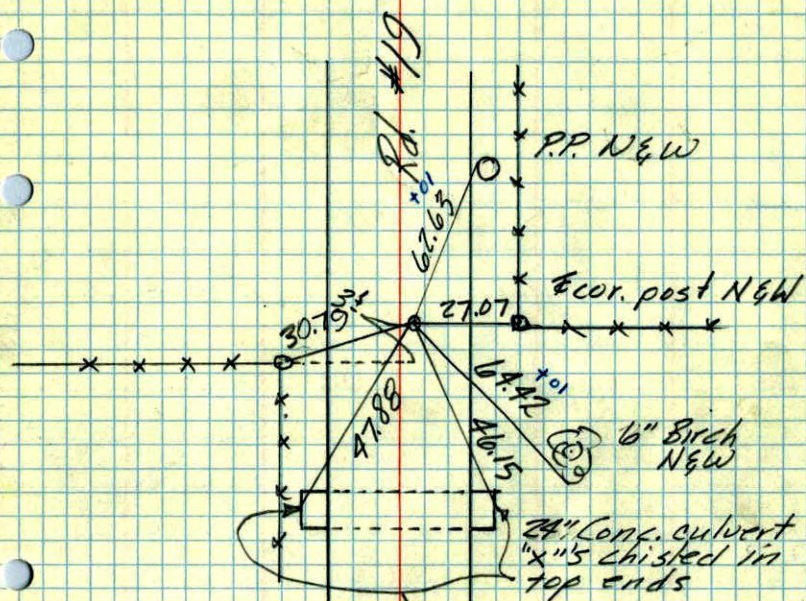
M. D. Anderson
 J. Oliver
 G. Mills

TEMPERATURE CORRECTED
 AND HORIZONTALLY
 TAPED MEASUREMENTS

ROLAND W. ANDERSON
 COUNTY SURVEYOR
 ANOKA COUNTY, MINNESOTA

E 1/4 Cor. Sec. 9-T32-R22

found 1/2" iron pipe down 0.2' ±
 & 1 1/2' E of E

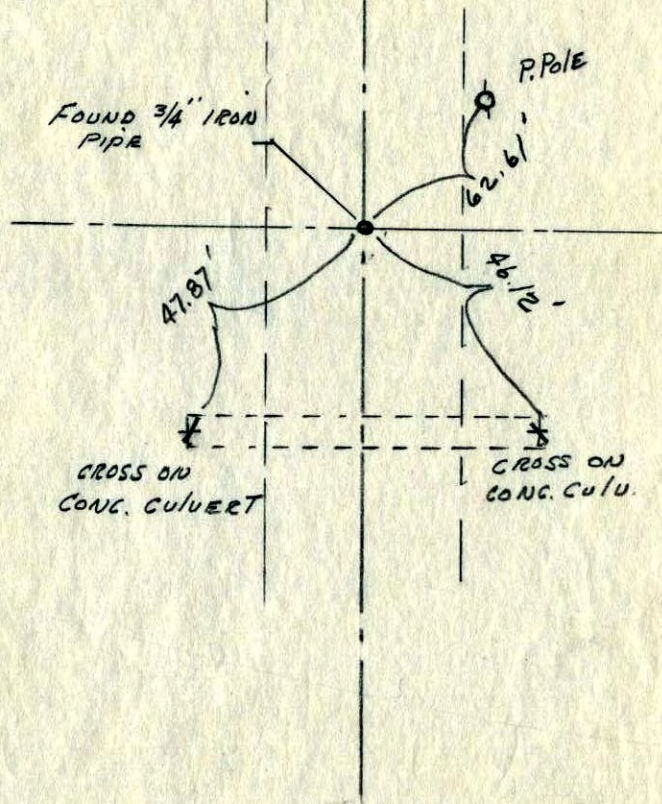


Sept. 18, 1964
 A.D. Anderson
 J. Oliver
 G. Mills
 Temp. 68°
 Tape #1

County

E 1/4 CORNER TIE
 SECTION 9-32-22

Don't have
 this tie



R.M. Knudson