

CERTIFICATE OF LOCATION OF GOVERNMENT CORNER

County of Anoka

State of Minnesota

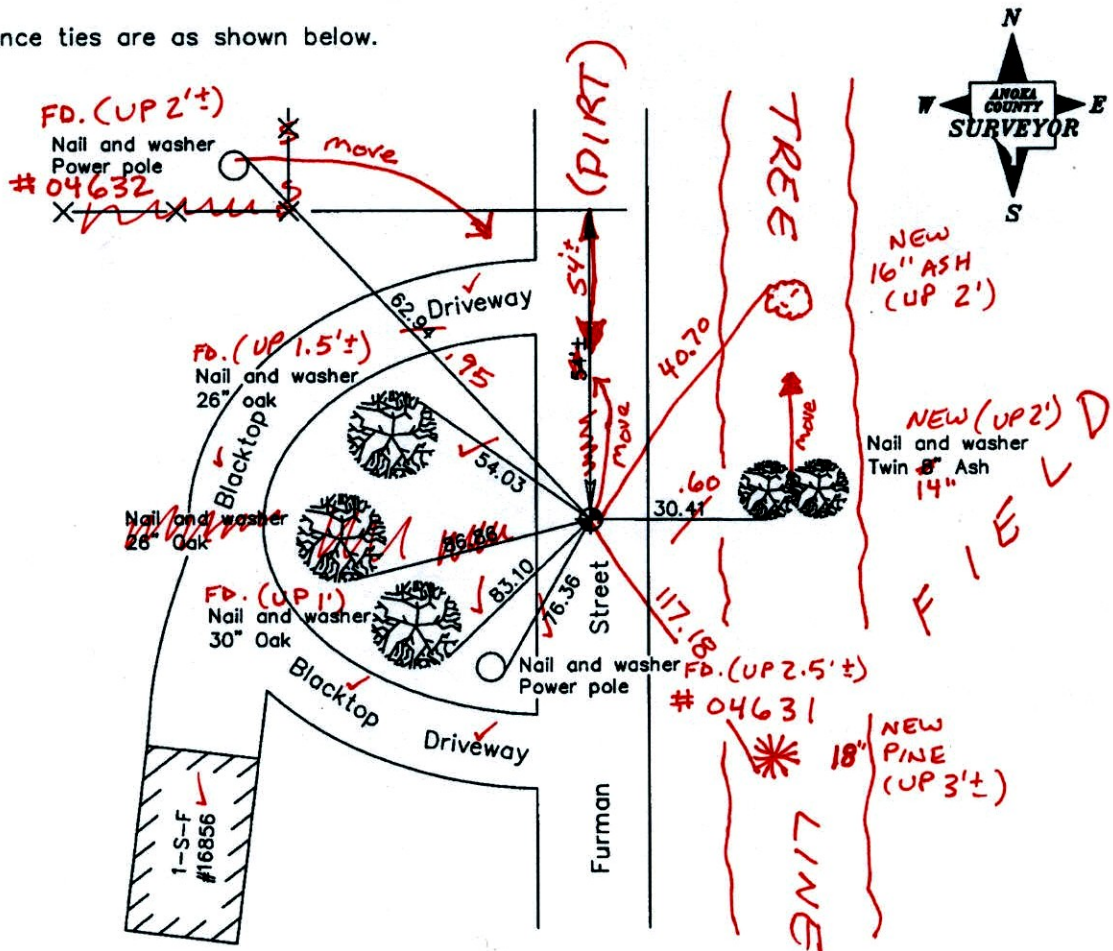
East 1/4 Corner of Sec. 10 Township 32 Range 22

On the 5th day of April, 1978, the described corner was evidenced by an iron pipe

and to perpetuate the location of said corner, at the exact location thereof, a permanent marker was placed consisting of a cast iron monument (DOWN 1.5'±)

AND on the 17th day of August, 2007, said permanent marker was found and the ties were updated

Updated reference ties are as shown below.



BK-SS
9-16-14
TOTAL STA.

Revised date
8/14/89
8/15/95
8/17/07

N.A.D. 1983 Coordinates (1996 Adjustment)	
County Project Coordinates	
Northing	187808.0381
Easting	553153.9637
Date	6/18/03

I hereby certify that this United States public land survey monument record is correct and complete to the best of my knowledge and belief.

Larry D. Hoium Date 8/17/07

Larry D. Hoium, Anoka County Surveyor
Minnesota License Number 18165

CERTIFICATE OF LOCATION OF GOVERNMENT CORNER

County of Anoka

State of Minnesota

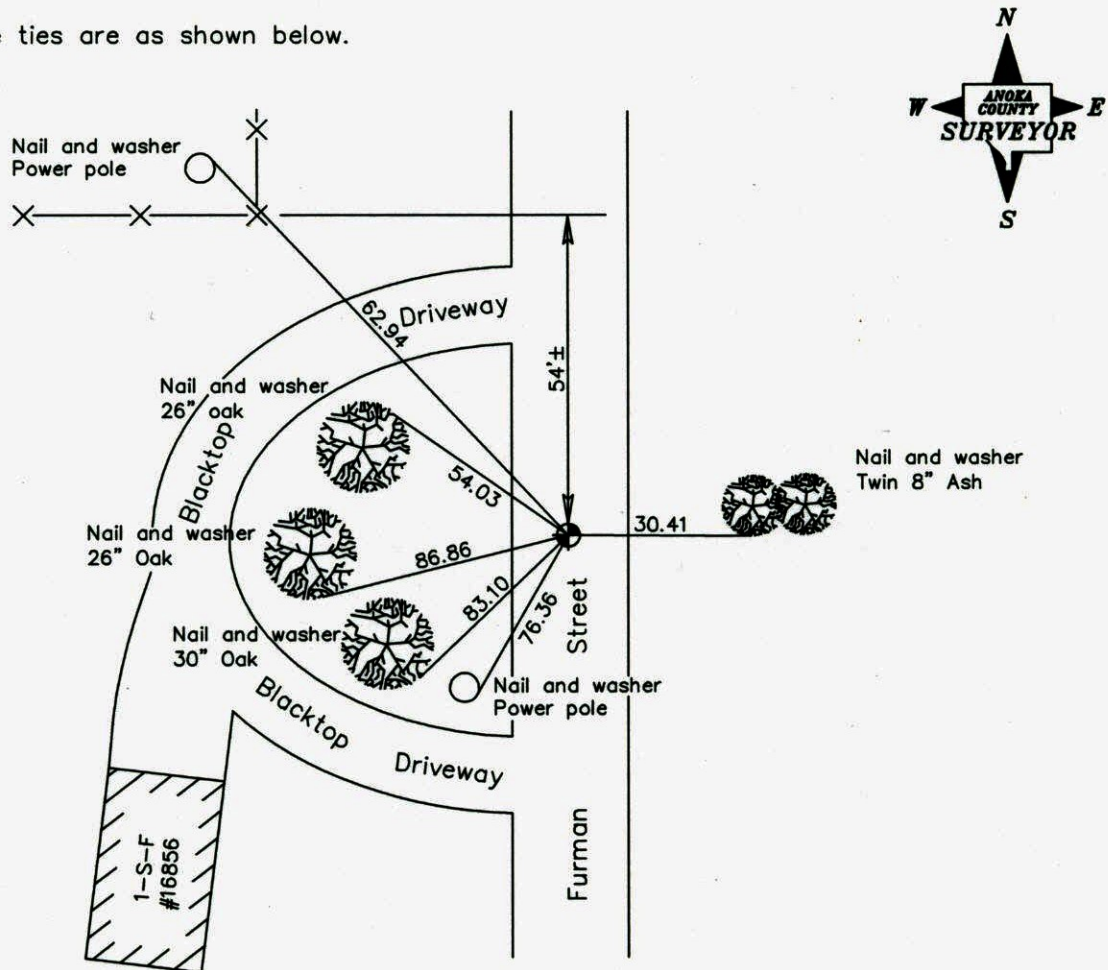
East 1/4 Corner of Sec. 10 Township 32 Range 22

On the 5th day of April, 1978, the described corner was evidenced by an iron pipe

and to perpetuate the location of said corner, at the exact location thereof, a permanent marker was placed consisting of a cast iron monument

AND on the 17th day of August, 2007, said permanent marker was found and the ties were updated

Updated reference ties are as shown below.



Revised date

8/14/89
8/15/95
8/17/07

N.A.D. 1983 Coordinates
(1996 Adjustment)

County Project Coordinates	
Northing	<u>187808.0381</u>
Easting	<u>553153.9637</u>
Date	<u>6/18/03</u>

I hereby certify that this United States public land survey monument record is correct and complete to the best of my knowledge and belief.

Larry D. Hoiium Date 8/17/07
 _____, Anoka County Surveyor
 Minnesota License Number 18165

CERTIFICATE OF LOCATION OF GOVERNMENT CORNER

County of Anoka

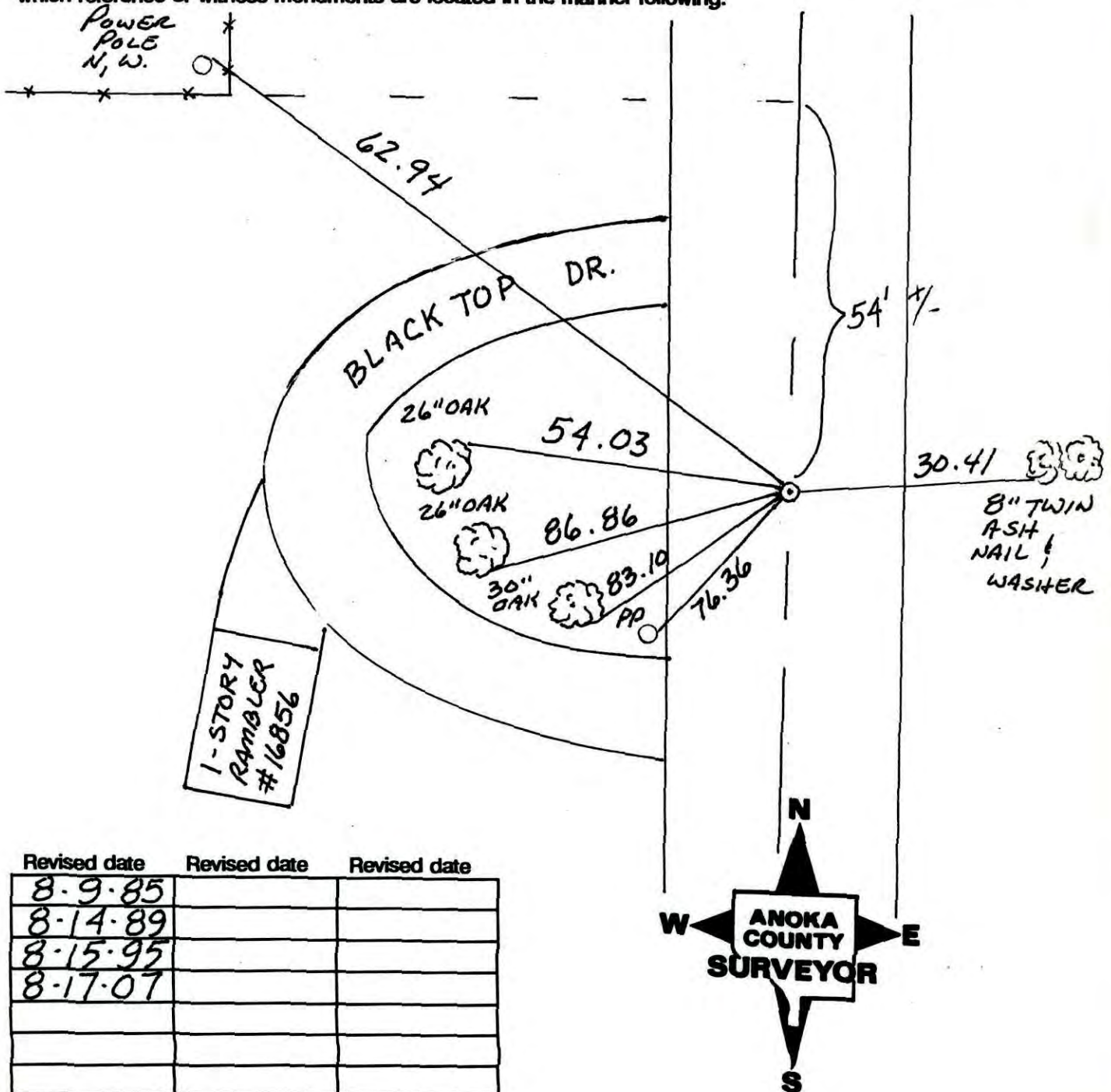
State of Minnesota

EAST 1/4 Corner of Sec. 10 Township 32 Range 22

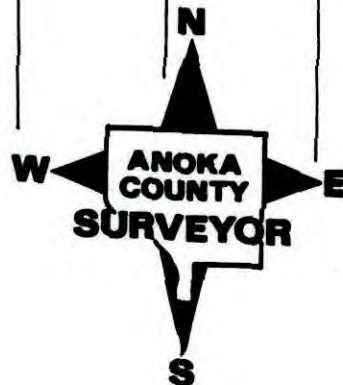
I hereby certify that on the 5 day of APRIL, 1978, I found the described corner which was evidenced by I. P.

and I further certify that to perpetuate the location of said corner, I did, at the exact location thereof, place a permanent marker consisting of CAST IRON MON.

which reference or witness monuments are located in the manner following:



Revised date	Revised date	Revised date
8-9-85		
8-14-89		
8-15-95		
8-17-07		



SHOT GPS 6.18.03

CERTIFICATE OF LOCATION OF GOVERNMENT CORNER

County of Anoka

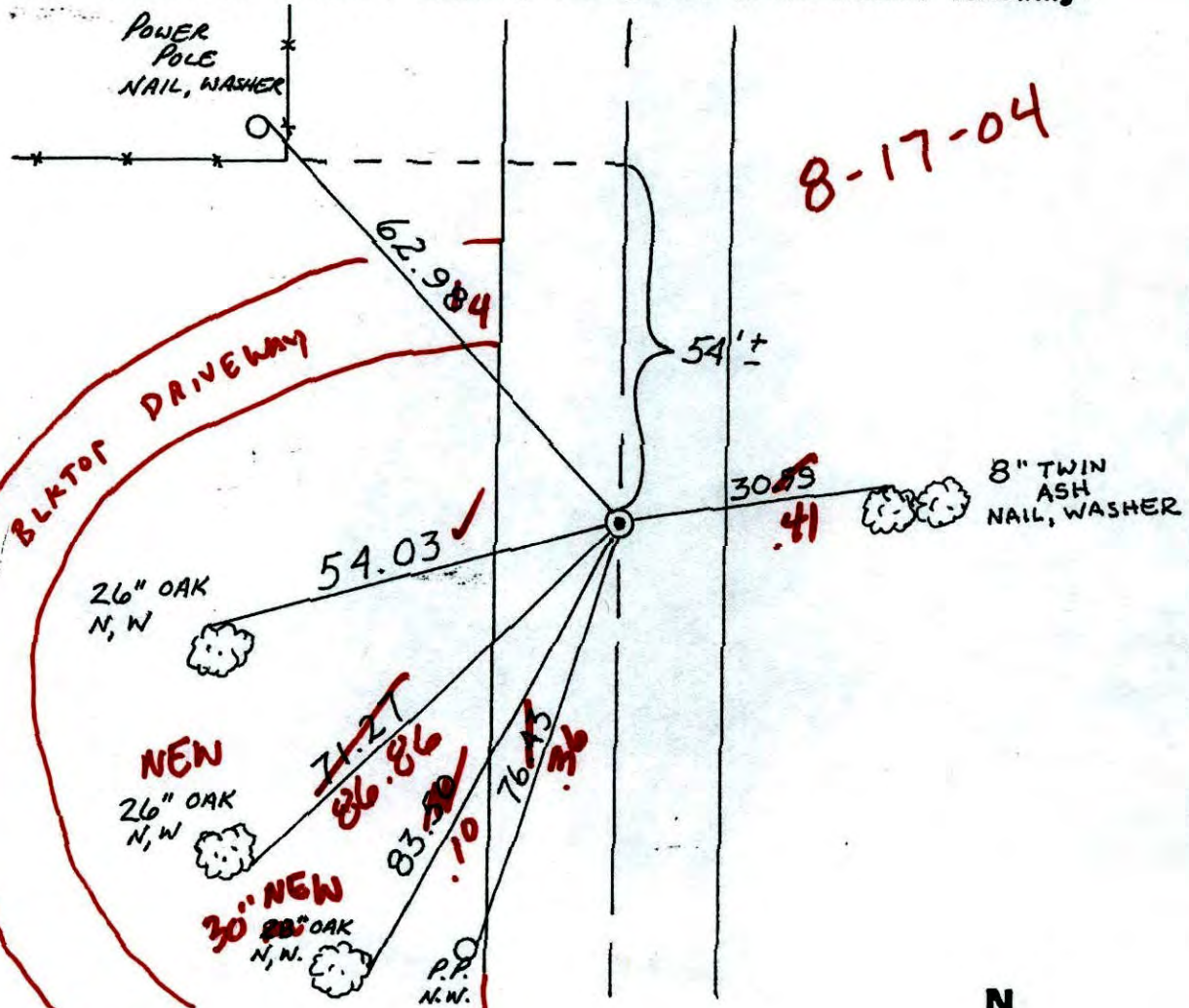
State of Minnesota

EAST QTR. Corner of Sec. 10 Township 32 Range 22

I hereby certify that on the 5 day of APRIL, 1978, I found the described corner which was evidenced by I. P.

and I further certify that to perpetuate the location of said corner, I did, at the exact location thereof, place a permanent marker consisting of CAST IRON MON.

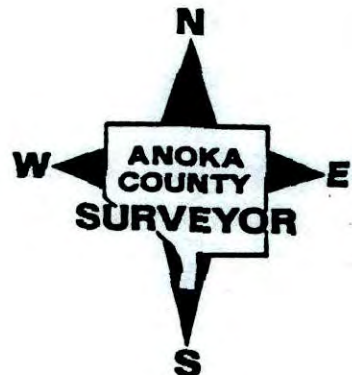
which reference or witness monuments are located in the manner following:



8-17-04

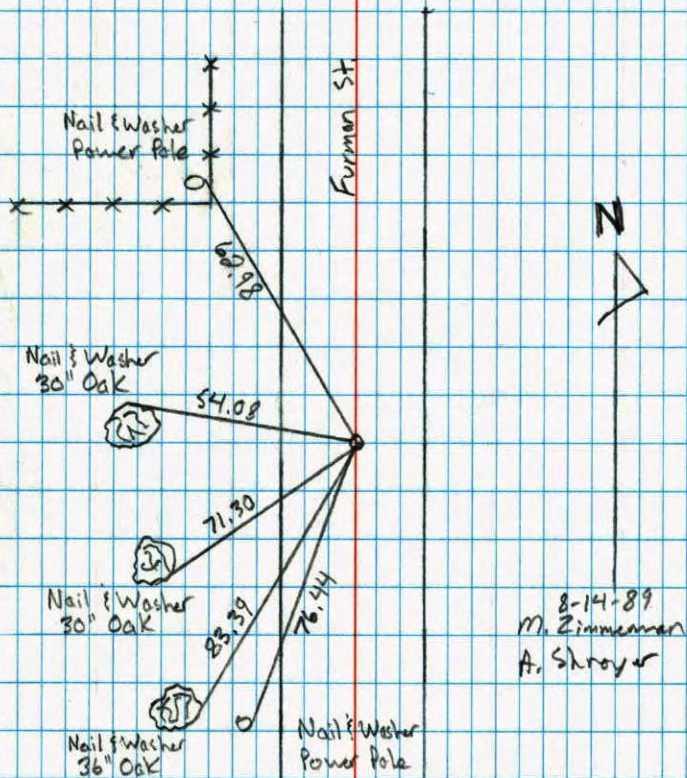
1-STORY -
RAMBLER
5891
16856

Revised date	Revised date	Revised date
8-9-85		
8-14-89		
8-15-95		



East 1/4 Corner Sec. 10 T32 R22

Retied Cast Iron Monument



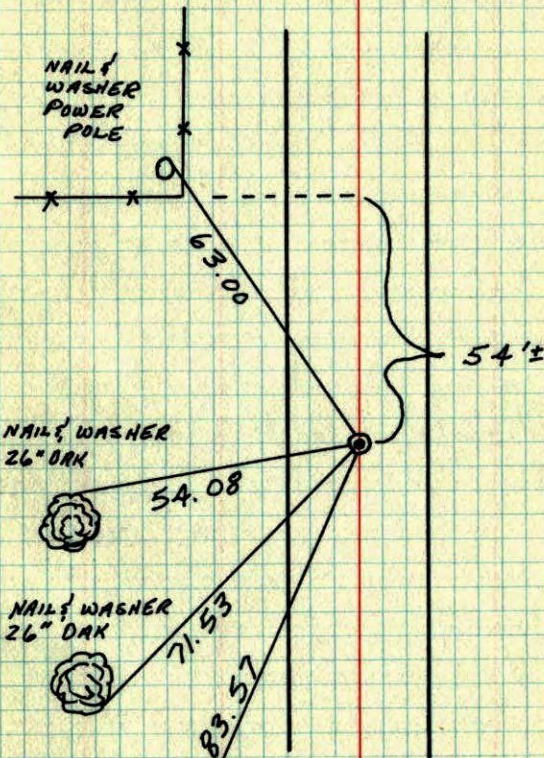
8-14-89
M. Zimmerman
A. Shroyer

NO. 446

TELEPHONE

E 1/4 COR. SECTION 10-T32-R22

SET CAST IRON MONUMENT IN PLACE OF FOUND
IRON PIPE AFTER AREA RESURVEY. SET IN
CENTERLINE DIRT ROAD DOWN 0.5'±



5 APR 78
M.D. ANDERSON
P.R. BERTLESAN
M.S. AVNE

TEMPERATURE CORRECTED
AND HORIZONTALLY
TAPED MEASUREMENTS

ROLAND W. ANDERSON
COUNTY SURVEYOR
ANOKA COUNTY, MINNESOTA

E 1/4 Cor. Sec. 10-T32-R22

set G.I. Man. in place of found Iron pipe after
a.c.v.a. resurvey
set in dirt Rd. down 0.5'

