

# CERTIFICATE OF LOCATION OF GOVERNMENT CORNER

County of Anoka

State of Minnesota

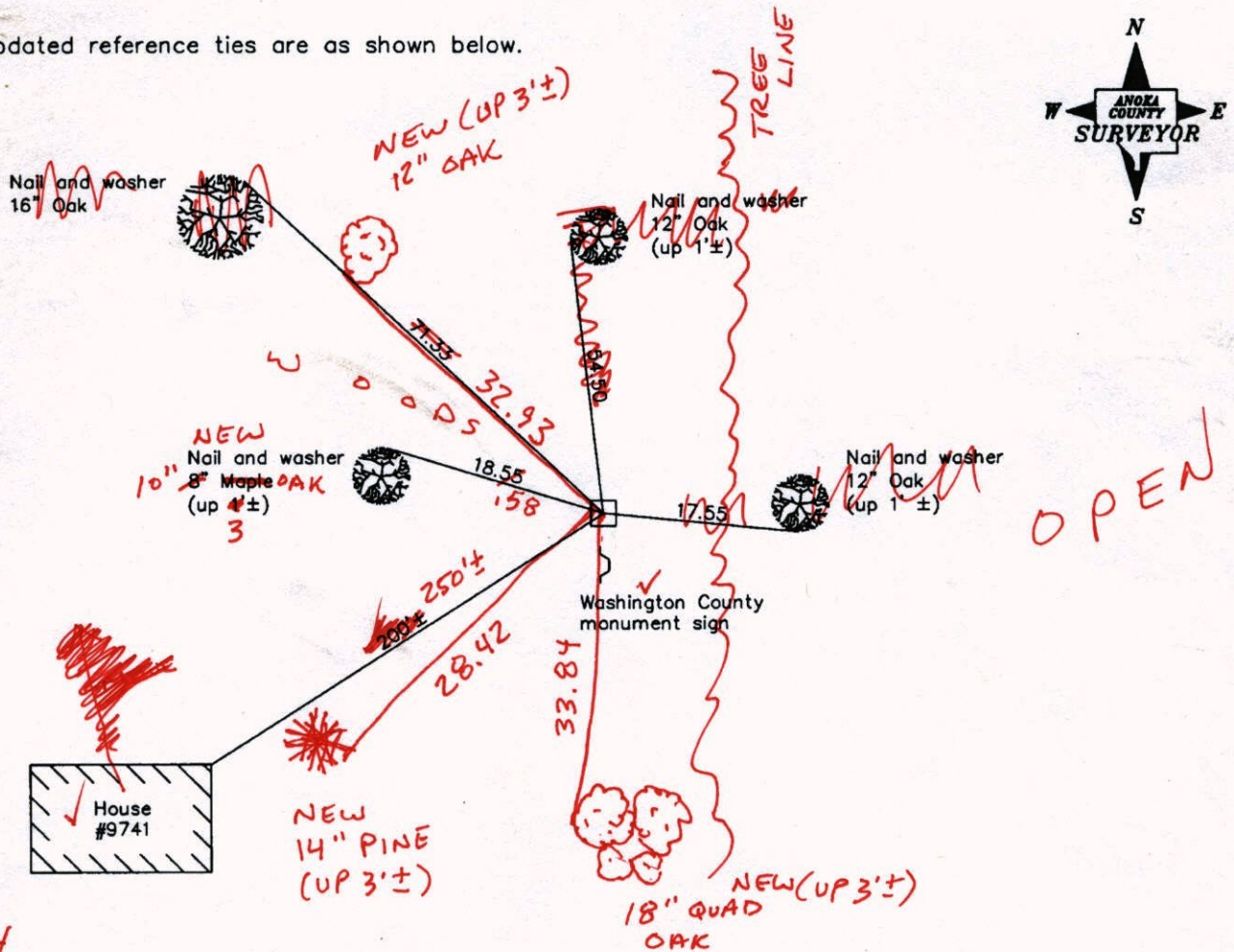
East 1/4 Corner of Sec. 12 Township 32 Range 22

On the 27th day of July, 1960, the described corner was evidenced by a sandstone monument

and to perpetuate the location of said corner, at the exact location thereof, a permanent marker was placed consisting of the same sandstone monument (UP 0.2'±)

AND on the 21st day of April, 2008, said permanent marker was found and the ties were updated

Updated reference ties are as shown below.



9-23-14  
BK-55  
TOTAL STA.

Revised date
4/28/89
8/16/95
4/21/08

N.A.D. 1983 Coordinates (1996 Adjustment)	
County Project Coordinates	
Northing	187730.0753
Easting	563626.5223
Date	1/17/06

I hereby certify that this United States public land survey monument record is correct and complete to the best of my knowledge and belief.

*Larry D. Holium* Date 4/21/08

Larry D. Holium, Anoka County Surveyor

Minnesota License Number 18165

# CERTIFICATE OF LOCATION OF GOVERNMENT CORNER

County of Anoka

State of Minnesota

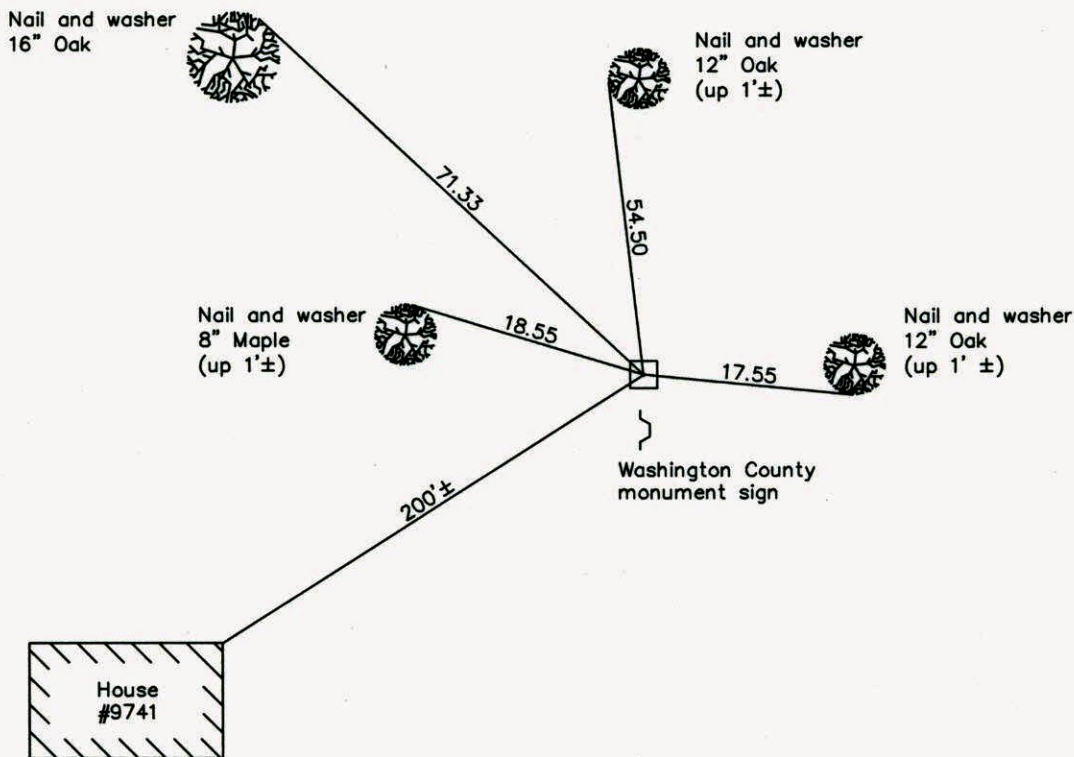
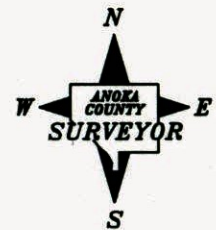
East 1/4 Corner of Sec. 12 Township 32 Range 22

On the 27th day of July, 1960, the described corner was evidenced by a sandstone monument

and to perpetuate the location of said corner, at the exact location thereof, a permanent marker was placed consisting of the same sandstone monument

AND on the 21st day of April, 2008, said permanent marker was found and the ties were updated

Updated reference ties are as shown below.



**Revised date**

4/28/89
8/16/95
4/21/08

**N.A.D. 1983 Coordinates  
(1996 Adjustment)**

<b>County Project Coordinates</b>	
Northing	187730.0753
Easting	563626.5223
Date	1/17/06

I hereby certify that this United States public land survey monument record is correct and complete to the best of my knowledge and belief.

*Larry D. Hoium*      Date 4/21/08

\_\_\_\_\_  
Larry D. Hoium, Anoka County Surveyor  
Minnesota License Number 18165

# CERTIFICATE OF LOCATION OF GOVERNMENT CORNER

County of Anoka

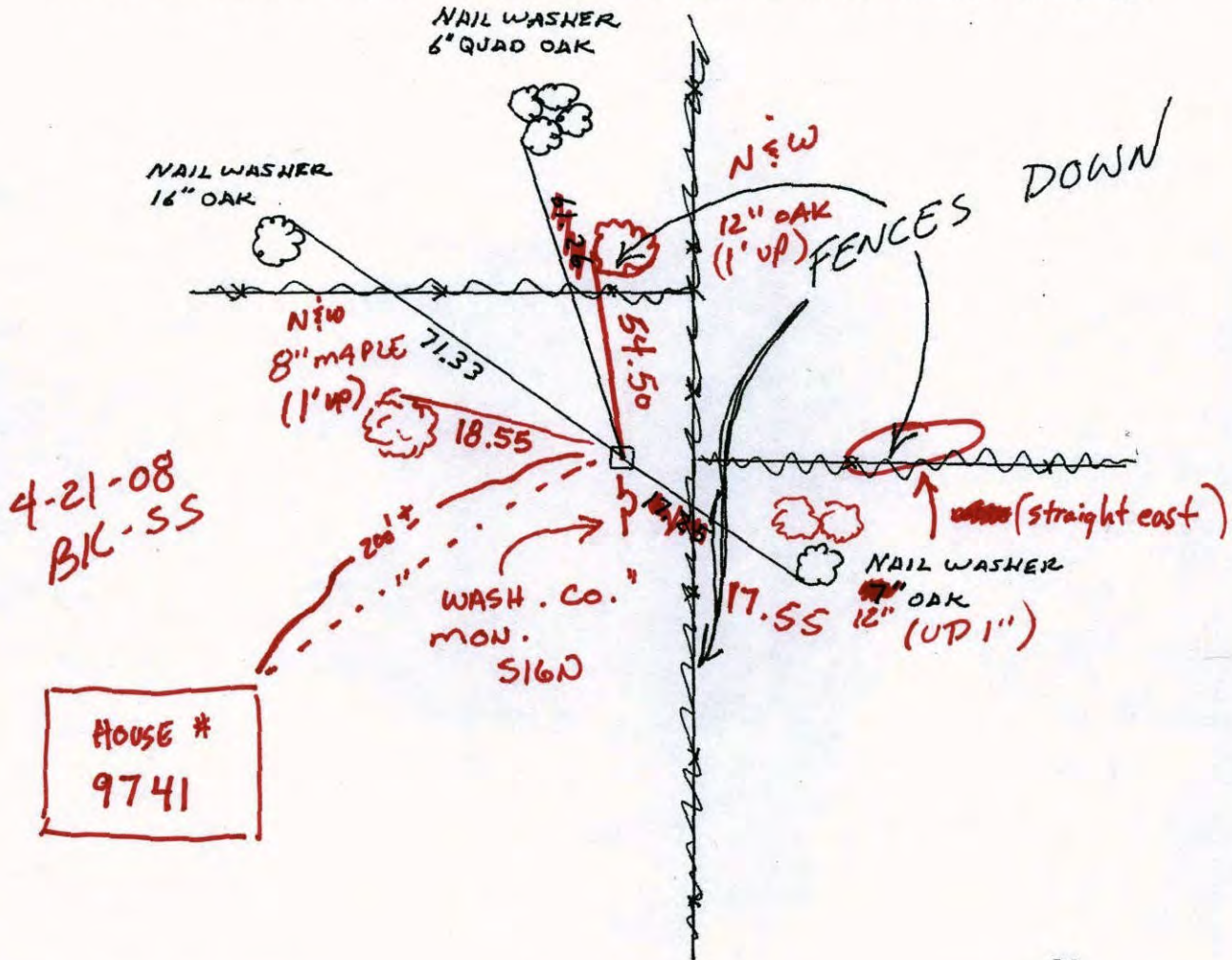
State of Minnesota

EAST 1/4 Corner of Sec. 12 Township 32 Range 22

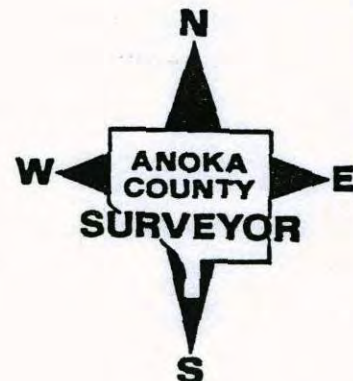
I hereby certify that on the 27 day of JULY, 1960, I found the described corner which was evidenced by SANDSTONE MONUMENT

and I further certify that to perpetuate the location of said corner, I did, at the exact location thereof, place a permanent marker consisting of SANDSTONE MONUMENT

which reference or witness monuments are located in the manner following:



Revised date	Revised date	Revised date
7-27-60		
8-15-85		
REDRAWN 4-28-89		
8-16-95		



# CERTIFICATE OF LOCATION OF GOVERNMENT CORNER

County of Anoka

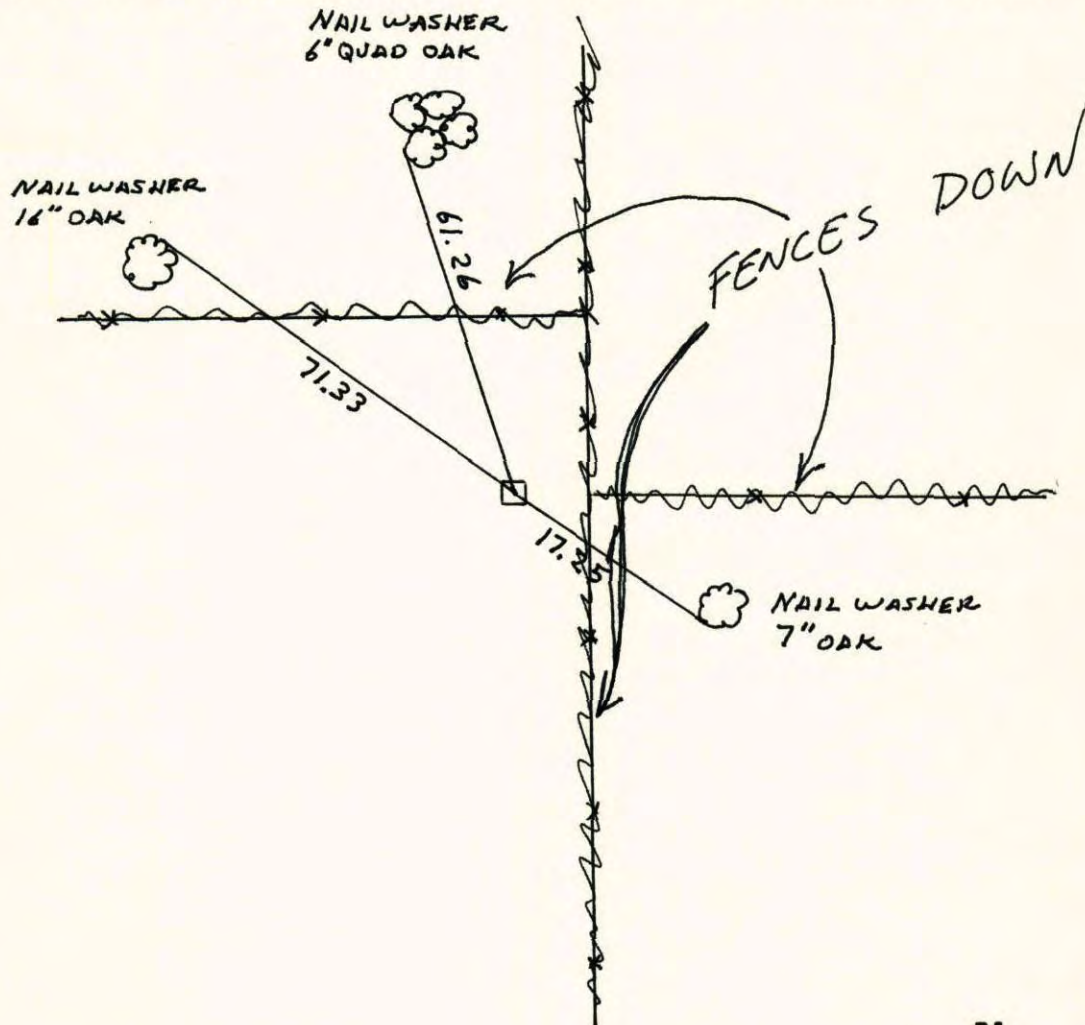
State of Minnesota

EAST 1/4 Corner of Sec. 12 Township 32 Range 22

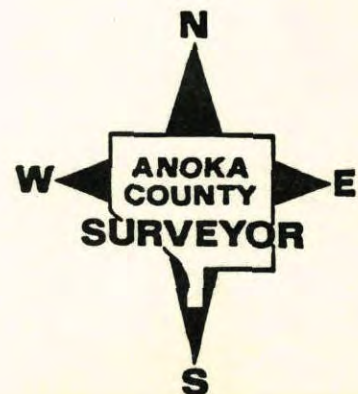
I hereby certify that on the 27 day of JULY, 1960, I found the described corner which was evidenced by SANDSTONE MONUMENT

and I further certify that to perpetuate the location of said corner, I did, at the exact location thereof, place a permanent marker consisting of SANDSTONE MONUMENT

which reference or witness monuments are located in the manner following:



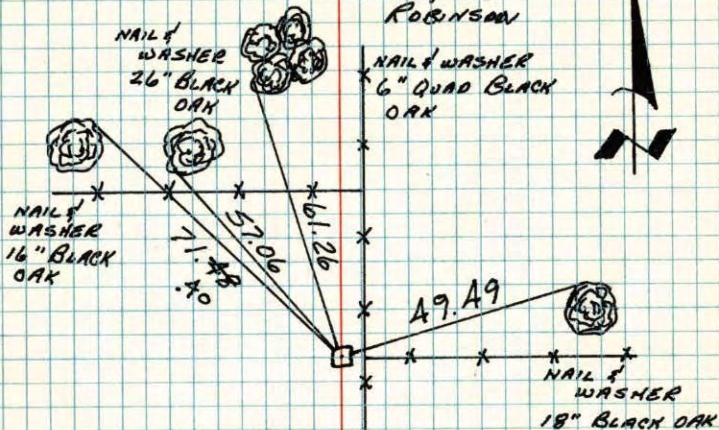
Revised date	Revised date	Revised date
7-27-60		
8-15-85		
REDRAWN 4-28-89		
8-16-95		



## E 1/4 CORNER SECTION 12-T32-R22

6" x 6" SQUARE SANDSTONE MONUMENT. UP 3"  
WITH DRILL HOLE IN TOP CENTER. STEEL POST ON  
EAST SIDE UP 2.5'

27 JUL 60  
ROGERS  
ROBINSON



TIE CHECK  
8 AUG 76  
G. ADAMS  
S. BRIEN  
J. STEPHENS

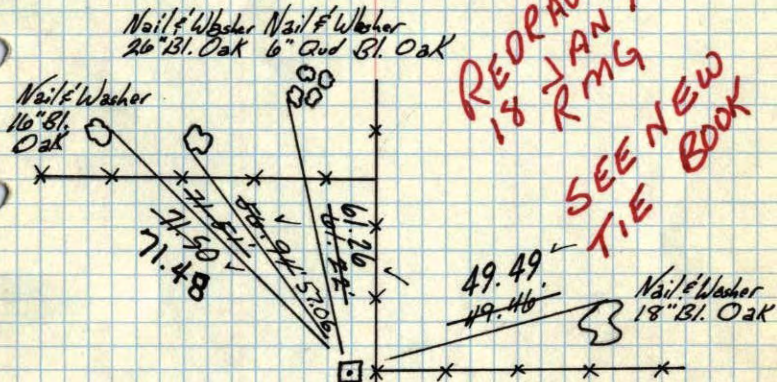
TIE CHECK  
8-6-79  
B. STEPHENS  
D. STEPHENS  
P. ROSS

TEMPERATURE CORRECTED  
AND HORIZONTALLY  
TAPED MEASUREMENTS

ROLAND W. ANDERSON  
COUNTY SURVEYOR  
ANOKA COUNTY, MINNESOTA

## E 1/4 Cor. Sec 12-T32-R22

6" x 6" Sq. Stone (Sandstone)  
up 3" with drill hole in top center  
Steel Fence Post on East  
Side up 2.5'



REDRAWN  
18 JAN 79  
RMG  
SEE NEW  
BOOK  
TIE

Tie Check  
July 14, 1970  
D. Powell  
W. Westlander

Temp. 88°  
7/27/60

Tie Check  
June 6, 1973  
B. Olson  
D. Brien  
D. Farmer

Rogers  
Robinson

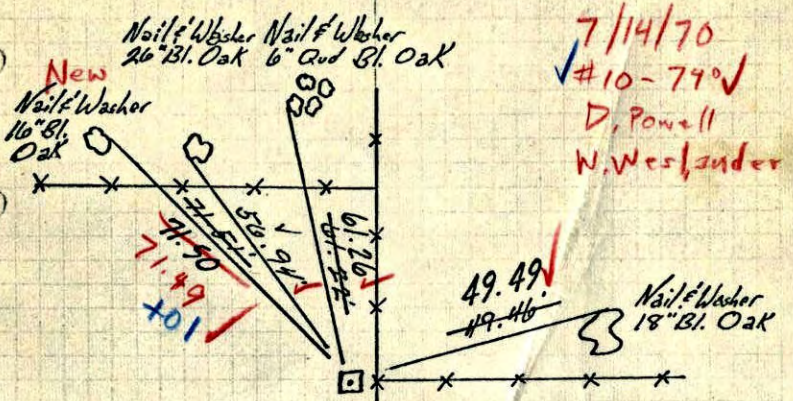
TIE CHECK  
8-8-76  
G. ADAMS  
S. BRIEN  
J. STEPHENS

TEMPERATURE CORRECTED  
AND HORIZONTALLY  
TAPED MEASUREMENTS

Retie 9/18/64  
M. D. Anderson  
J. Oliver  
G. Mills

ROLAND W. ANDERSON  
COUNTY SURVEYOR  
ANOKA COUNTY, MINNESOTA

~~XX~~ E 1/4 Cor. Sec 12-T32-R22  
6" x 6" Sq. Stone (sandstone)  
up 3" with drill hole in top center  
Steel Fence Post on East  
side up 2.5".



7/14/70  
#10-79V  
D. Powell  
N. Westlander

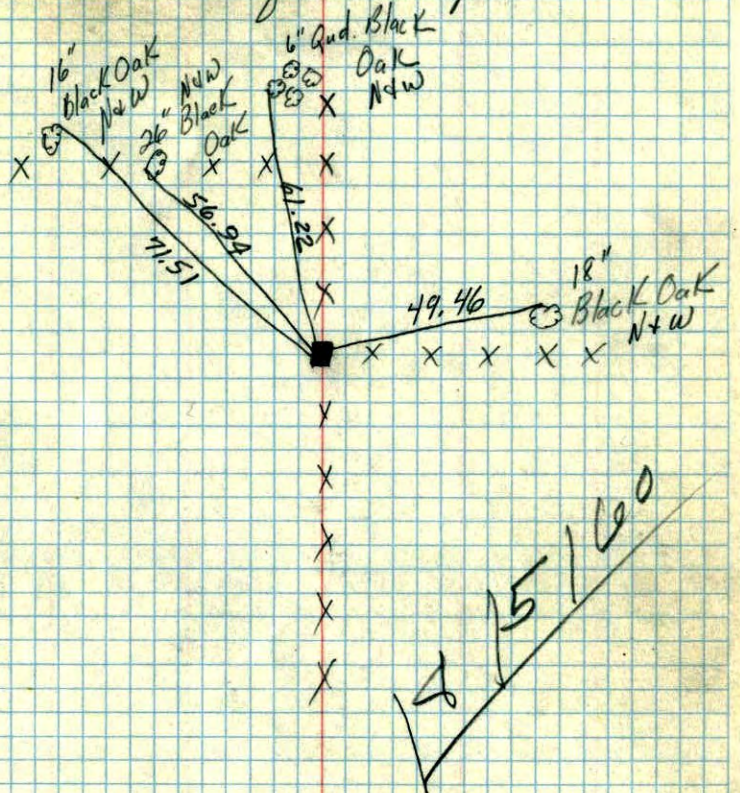
Temp. 88°  
7/27/60  
Rogers  
Robinson

TEMPERATURE CORRECTED  
AND HORIZONTALLY  
TAPED MEASUREMENTS

Retie 9/18/64  
M. D. Anderson  
J. Oliver  
G. Mills

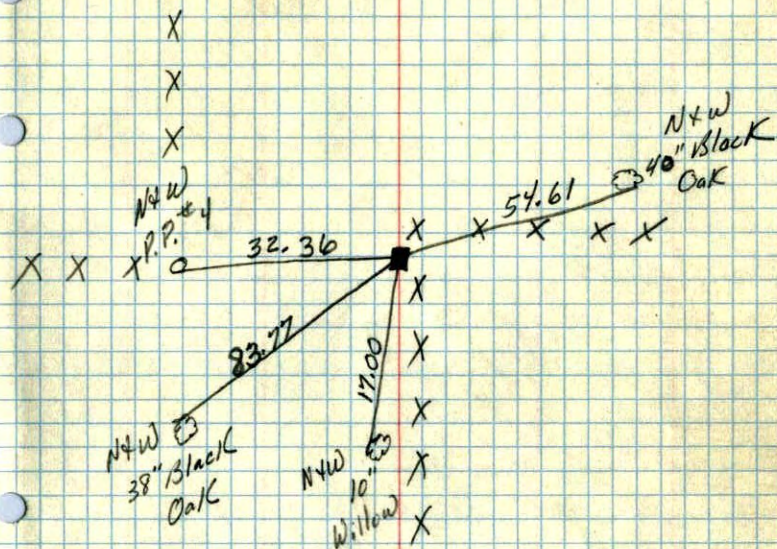
ROLAND W. ANDERSON  
COUNTY SURVEYOR  
ANOKA COUNTY, MINNESOTA

E 1/4 Cor. Sec. 12 T32 R22  
6" x 6" Sq. Stone Up 3"



Temp. 88°  
7/27/60  
Bill Rogers  
Ralph Robinson

NE Cor. Sec. 12 T32 R22  
6x6 Stone down 5"



19/5/60

Temp 88°  
7/25/60  
Bill Rogers  
Ralph Robinson