

# CERTIFICATE OF LOCATION OF GOVERNMENT CORNER

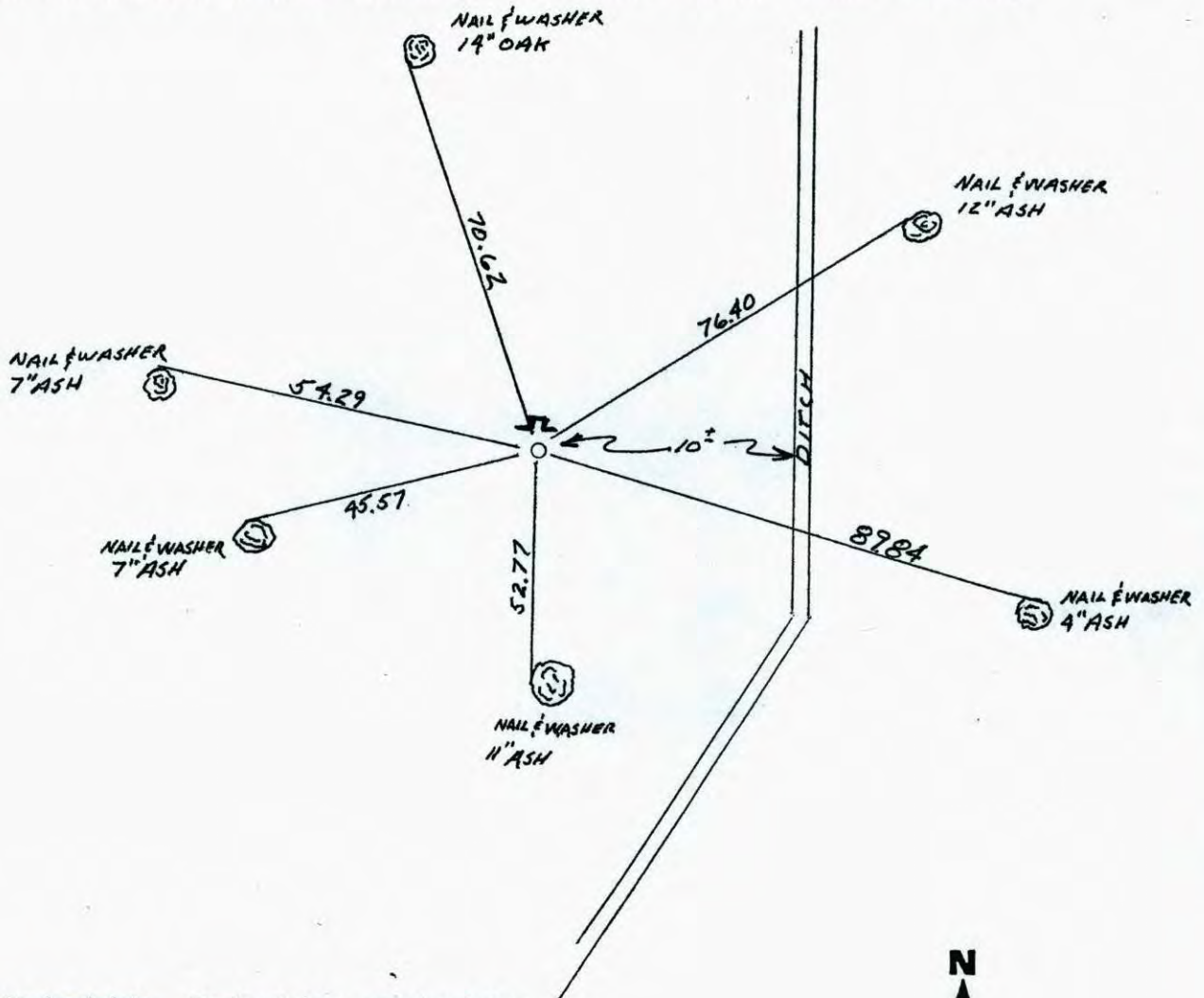
County of Anoka State of Minnesota

NORTHEAST Corner of Sec. 14 Township 32 Range 22

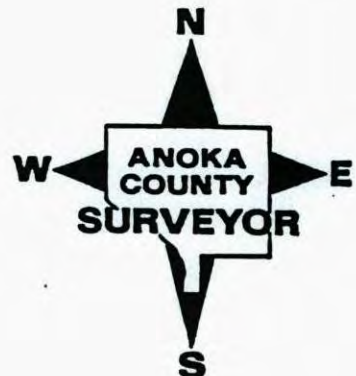
I hereby certify that on the 24<sup>TH</sup> day of JULY, 1964, I found the described corner which was evidenced by IRON PIPE

and I further certify that to perpetuate the location of said corner, I did, at the exact location thereof, place a permanent marker consisting of CAST IRON MONUMENT SIGN + POST ON NORTH SIDE

which reference or witness monuments are located in the manner following:



Revised date	Revised date	Revised date
7-24-64		
6-26-78		
7-12-82		
2-27-90		
WET 95		



# CERTIFICATE OF LOCATION OF GOVERNMENT CORNER

County of Anoka

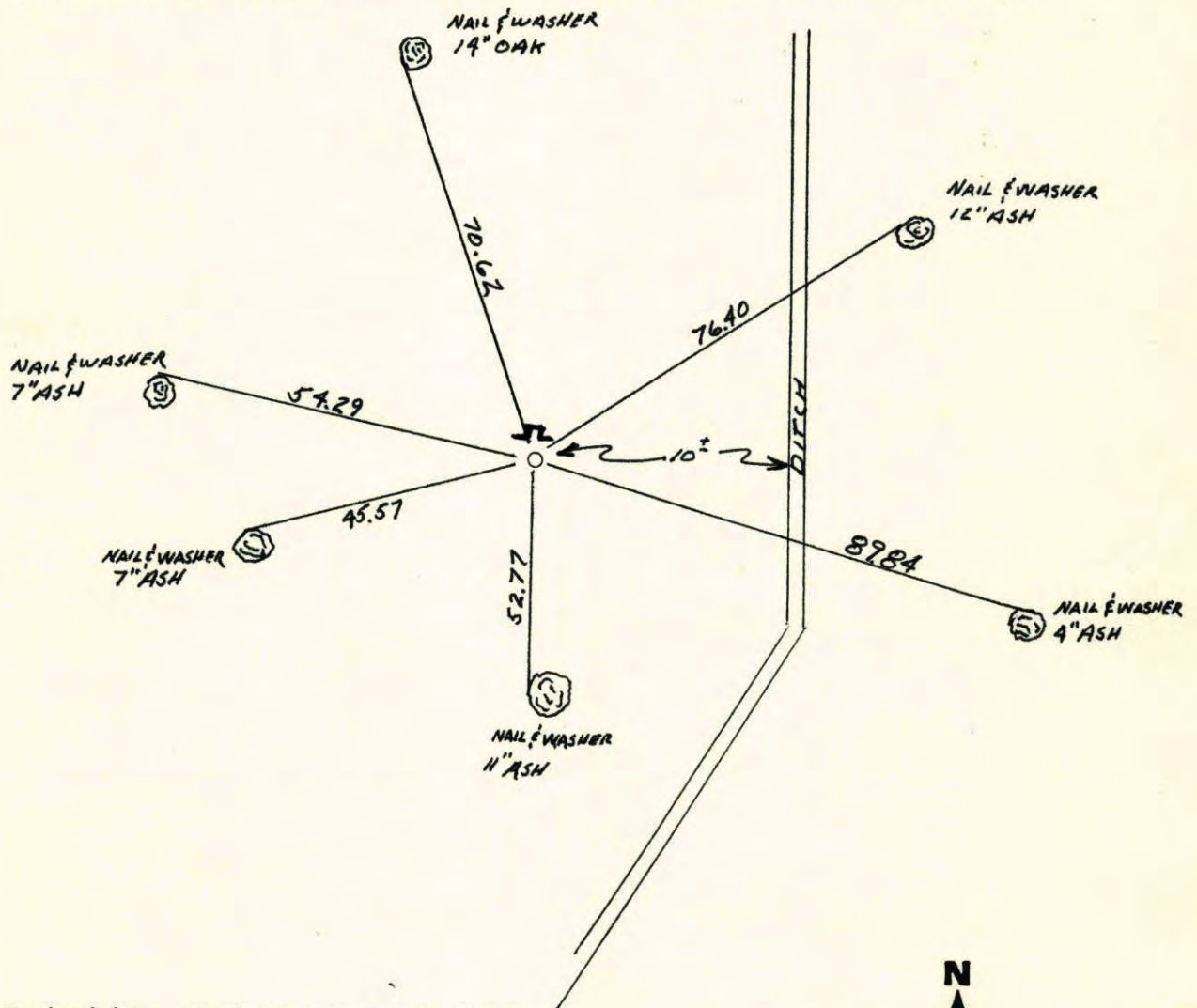
State of Minnesota

NORTHEAST Corner of Sec. 14 Township 32 Range 22

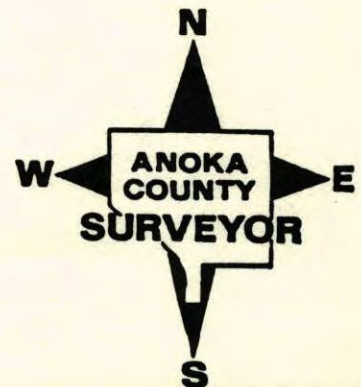
I hereby certify that on the 24<sup>TH</sup> day of JULY, 1964, I found the described corner which was evidenced by IRON PIPE

and I further certify that to perpetuate the location of said corner, I did, at the exact location thereof, place a permanent marker consisting of CAST IRON MONUMENT SIGN + POST ON NORTH SIDE

which reference or witness monuments are located in the manner following:

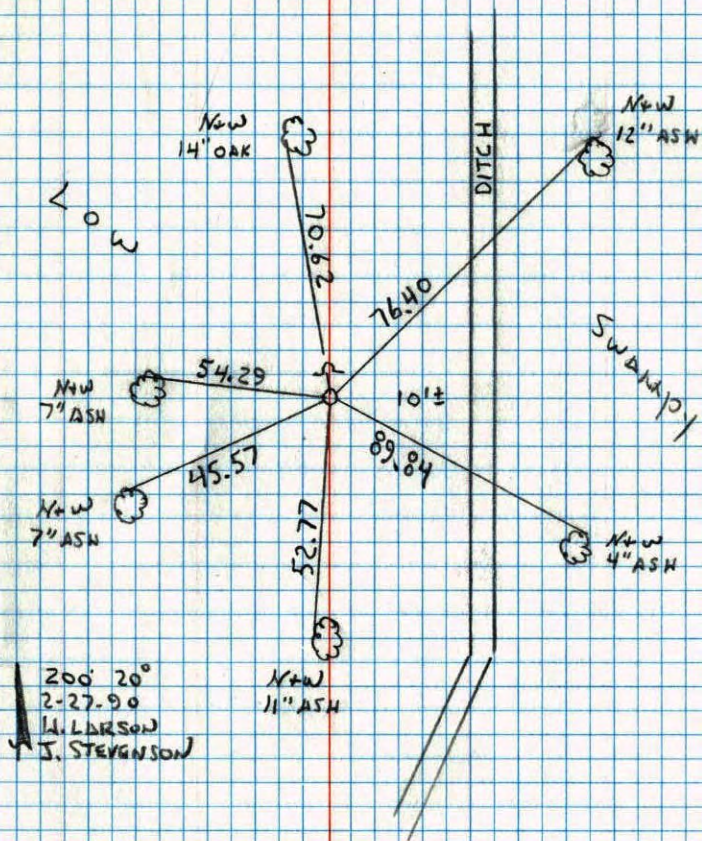


Revised date	Revised date	Revised date
7-24-64		
6-26-78		
7-12-82		
2-27-90		
WET 95		



NORTHEAST COR. SECTION 14 T32 R22

RETIRED CAST IRON AND PLACED SIGN AND POST ON NORTH SIDE.



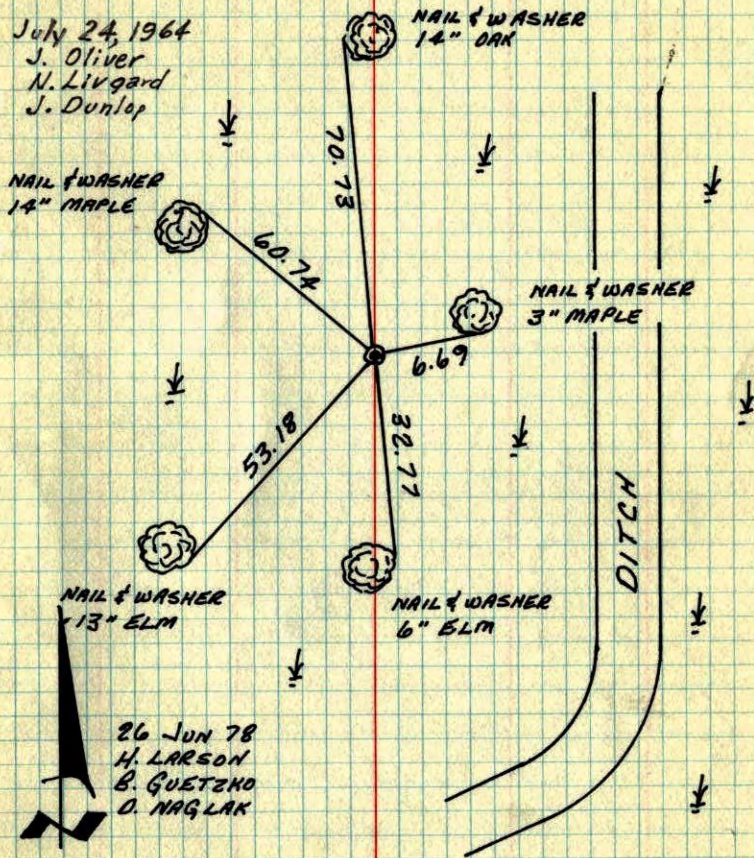
TELEPHONE NO. 448

N. E. COR. SECTION 14-T32-R22

REPLACED IRON PIPE WITH CAST IRON MONUMENT.

CAST IRON FLUSH AND 15' WEST OF E OF DITCH.

July 24, 1964  
J. Oliver  
N. Livgard  
J. Dunlap

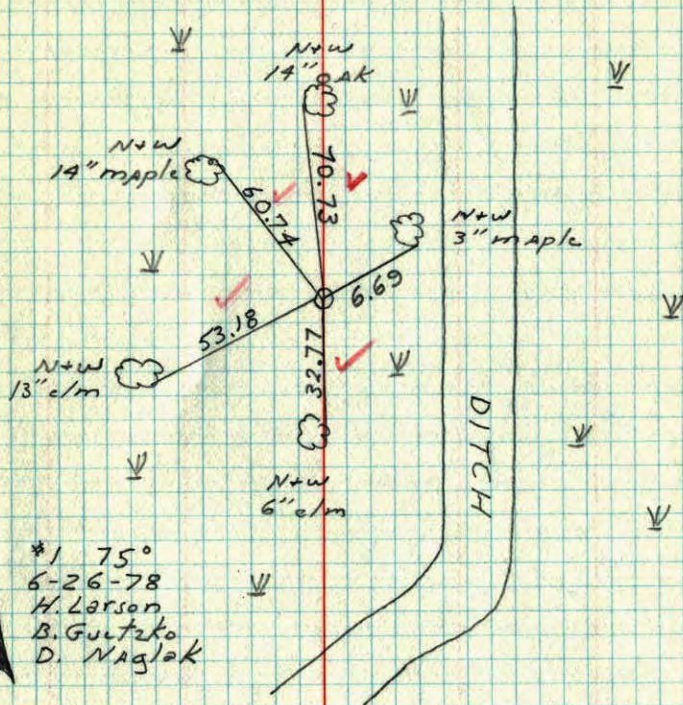


TEMPERATURE CORRECTED  
AND HORIZONTALLY  
TAPED MEASUREMENTS

ROLAND W. ANDERSON  
COUNTY SURVEYOR  
ANOKA COUNTY, MINNESOTA

NE Cor. Section 14 T32 R22

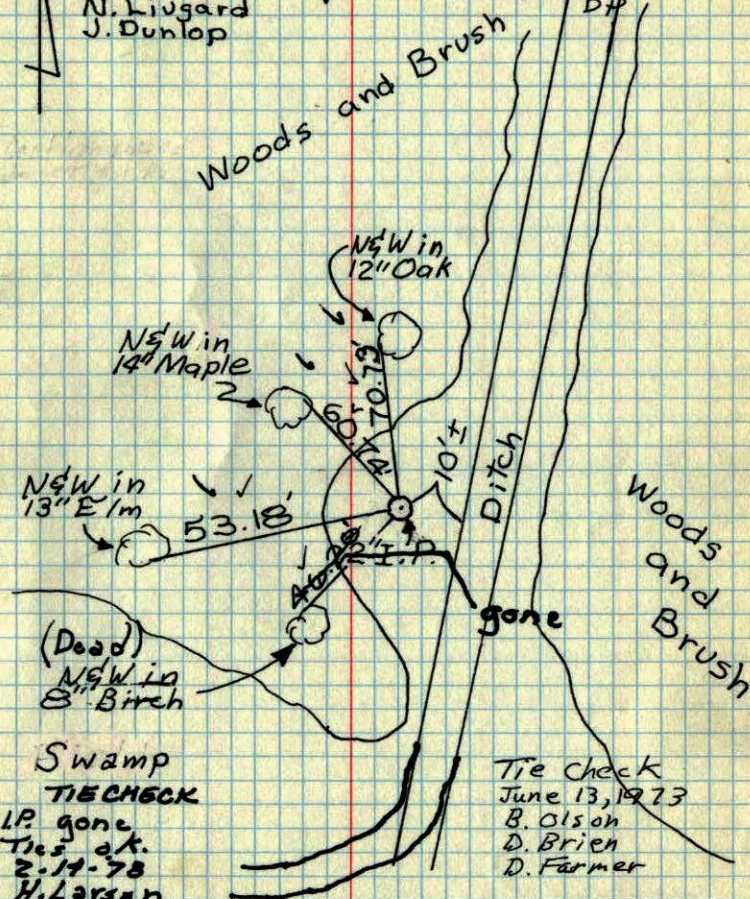
Replaced I.P. with cast iron monument cast iron flush and 15'± West of E of ditch.



NE Cor. Sec 14, T32, R22

Found 2" I.P. up 2.5'. Checks well with resurvey of the Area.

I.P. very loose. Check in Winter because of heavy vegetation. July 14, 1970  
20 July 64 J. Oliver  
N. Liugard  
J. Dunlop



ROLAND W. ANDERSON  
COUNTY SURVEYOR  
ANOKA COUNTY, MINNESOTA

TEMPERATURE CORRECTED  
AND HORIZONTALLY  
TAPED MEASUREMENTS

NE Cor. Sec. 14, T32, R22

Found 2" I.P. up 2.5'

N  
20 July 64  
85P #5  
J. Oliver  
M. Livgard  
J. Dunlap

