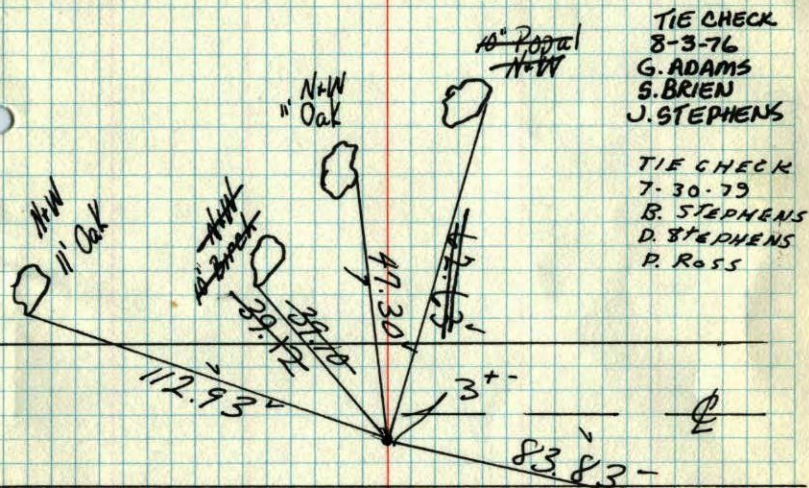


N 1/4 Cor N Line N.W. 1/4 Sec 2 T32-R22

Found Conc. Mon. down 1.5' - Top broken off. dug up road with Park Dept. tractor to find Cor. (J. Lucas-driver)

Replaced Conc. Mon. with 1/2" Iron Pipe



TIE CHECK
8-3-76
G. ADAMS
S. BRIEN
J. STEPHENS

TIE CHECK
7-30-79
R. STEPHENS
D. STEPHENS
P. ROSS

June 2, 1971

M.D. Larson
H.S. Larson

Ties checked
June 5, 1973
B. Olson
D. Brien
D. Farmer

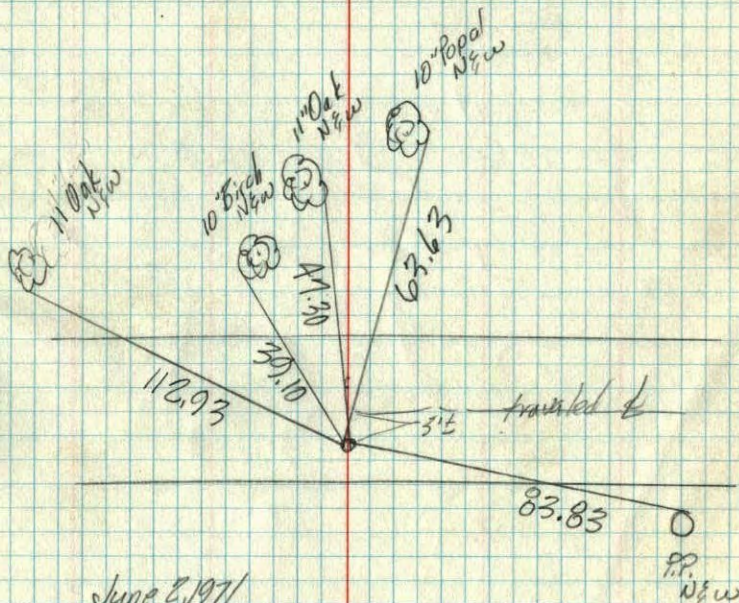
Found Conc. Mon.
1/4 mi. W on it side
could not use it.

TEMPERATURE CORRECTED AND HORIZONTALLY TAPED MEASUREMENTS
ROLAND W. ANDERSON
COUNTY SURVEYOR
ANOKA COUNTY, MINNESOTA

N 1/4 Cor. N. line N.W. 1/4 Sec. 2 - T32-R22

found Conc. Mon. down 1.5' - Top broken off dug up road with Park Dept tractor to find Cor. (J. Lucas-Driver)

Replaced Conc. Mon. with 1/2" Iron pipe



June 2, 1971
M.D. Anderson
H.S. Larson
Temp. 65°
Tape # 11

found Conc. Mon.
1/4 mile west also
found laying on its
side could not use