

CERTIFICATE OF LOCATION OF GOVERNMENT CORNER

County of Anoka State of Minnesota

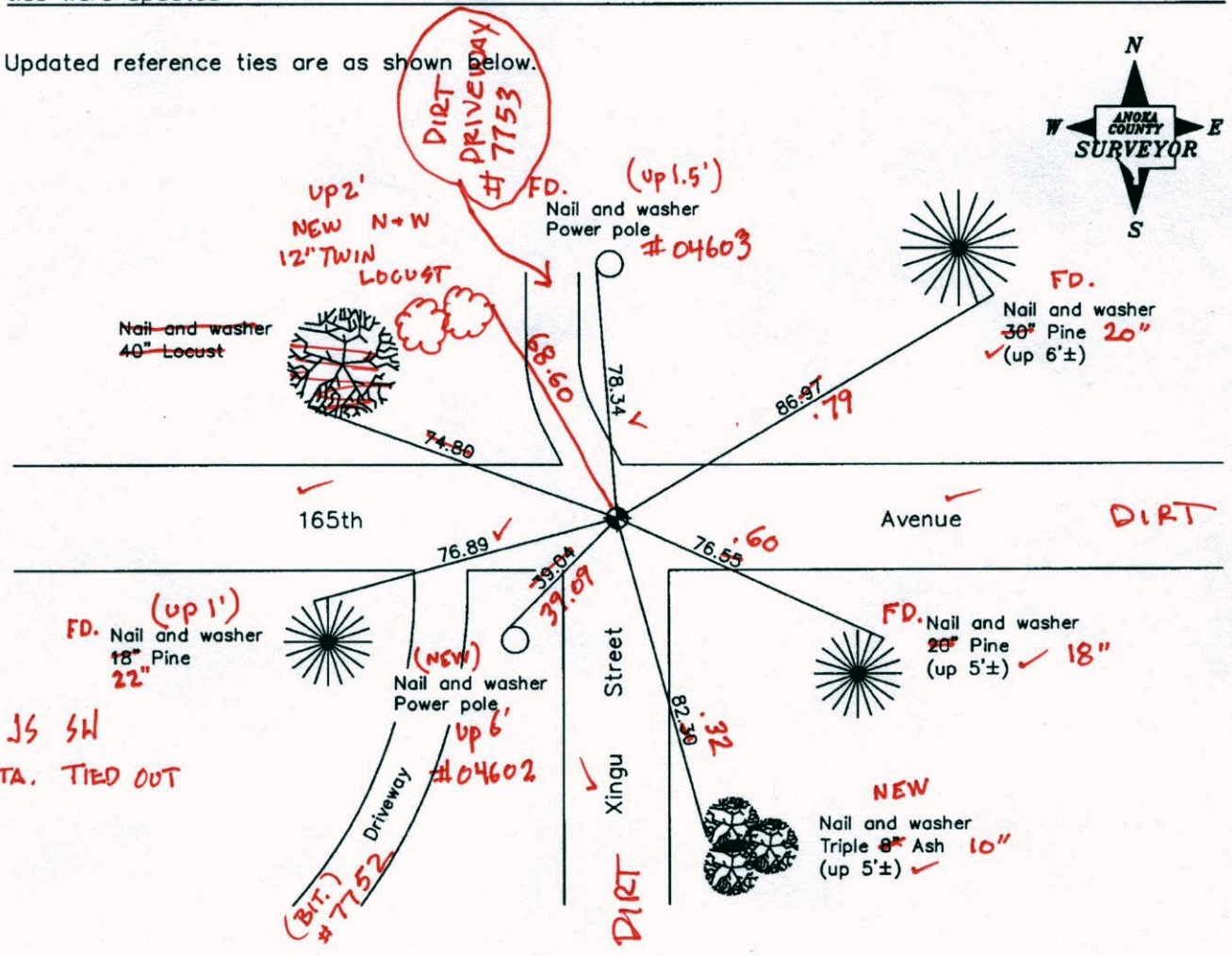
North 1/4 Corner of Sec. 15 Township 32 Range 22

On the 13th day of May, 1963, the described corner was evidenced by a well point

and to perpetuate the location of said corner, at the exact location thereof, a permanent marker was placed consisting of a cast iron monument down 0.5'± 2'±

AND on the 7th day of April, 2008, said permanent marker was found down 1'± and the ties were updated

Updated reference ties are as shown below.



9.11.14 JS SH
TOTAL STA. TIED OUT

Revised date	
8/16/89	
8/15/95	
4/07/08	

N.A.D. 1983 Coordinates (1996 Adjustment)	
County Project Coordinates	
Northing	185201.6397
Easting	550575.4584
Date	6/23/03

I hereby certify that this United States public land survey monument record is correct and complete to the best of my knowledge and belief.

Larry D. Hoium Date 4/07/08

Larry D. Hoium, Anoka County Surveyor

Minnesota License Number 18165

VRS COORD'S 3DR=0.08
N: 185201.5757
E: 550575.3618

CERTIFICATE OF LOCATION OF GOVERNMENT CORNER

County of Anoka

State of Minnesota

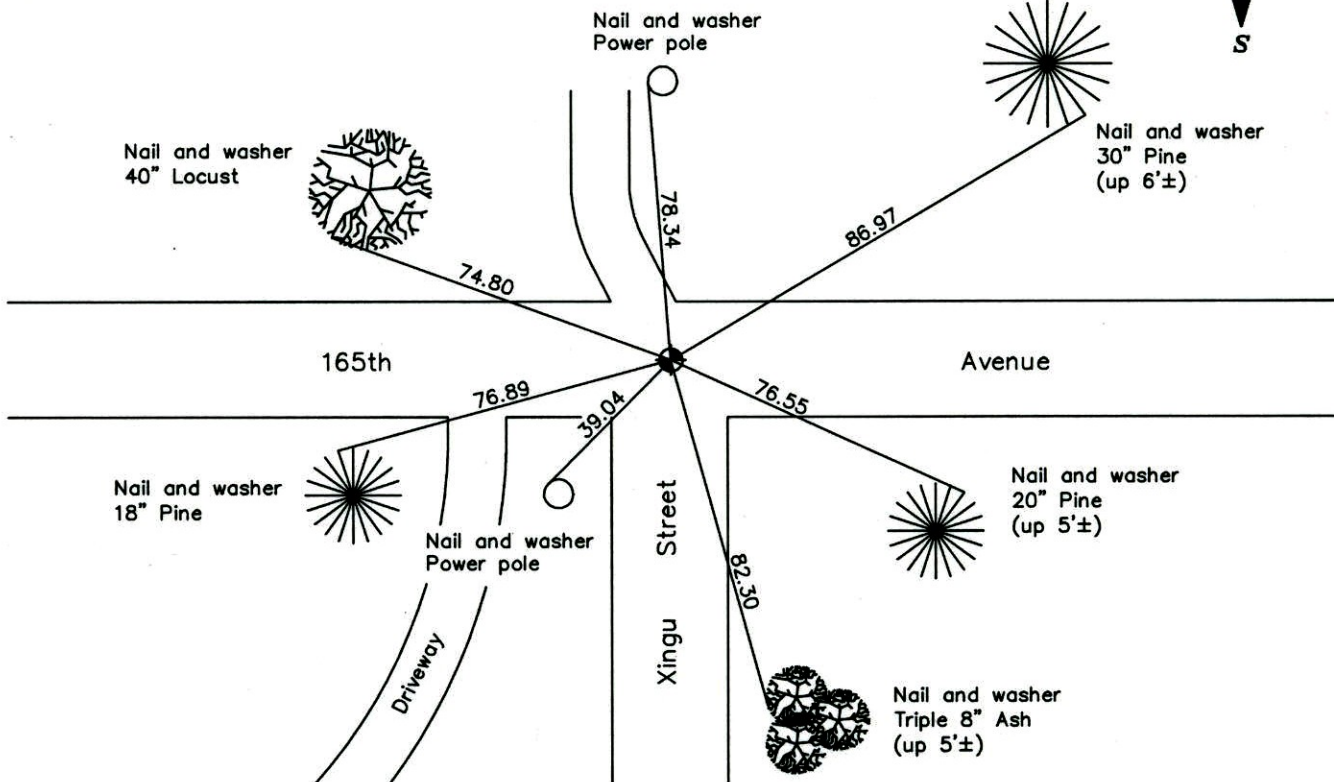
North $\frac{1}{4}$ Corner of Sec. 15 Township 32 Range 22

On the 13th day of May, 1963, the described corner was evidenced by a well point

and to perpetuate the location of said corner, at the exact location thereof, a permanent marker was placed consisting of a cast iron monument down 0.5'±

AND on the 7th day of April, 2008, said permanent marker was found down 1'± and the ties were updated

Updated reference ties are as shown below.



Revised date

8/16/89
8/15/95
4/07/08

**N.A.D. 1983 Coordinates
(1996 Adjustment)**

County Project Coordinates
Northing <u>185201.6397</u>
Easting <u>550575.4584</u>
Date <u>6/23/03</u>

I hereby certify that this United States public land survey monument record is correct and complete to the best of my knowledge and belief.

Larry D. Hoium Date 4/07/08

Larry D. Hoium, Anoka County Surveyor
Minnesota License Number 18165

CERTIFICATE OF LOCATION OF GOVERNMENT CORNER

County of Anoka

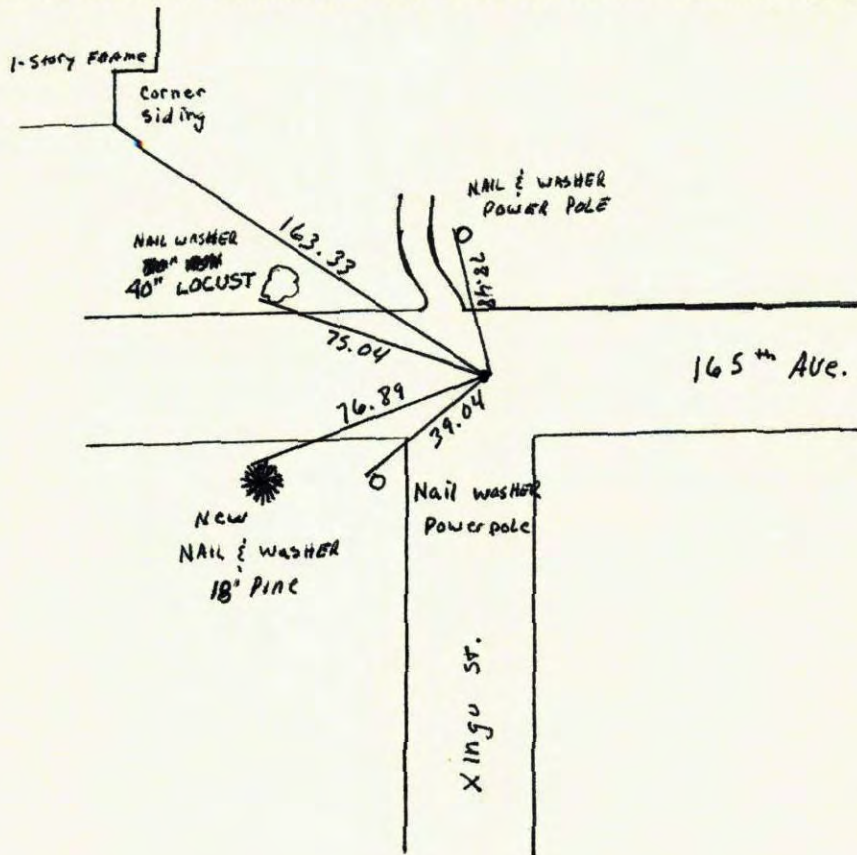
State of Minnesota

NORTH 1/4 Corner of Sec. 15 Township 32 Range 22

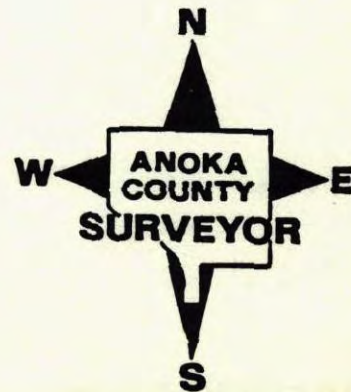
I hereby certify that on the 13 day of MAY, 1963, I found the described corner which was evidenced by well point

and I further certify that to perpetuate the location of said corner, I did, at the exact location thereof, place a permanent marker consisting of Cast Iron monument
Down .5'

which reference or witness monuments are located in the manner following:



Revised date	Revised date	Revised date
8-9-85		
4-19-90		
8-16-89		
8-15-95		



CERTIFICATE OF LOCATION OF GOVERNMENT CORNER

County of Anoka

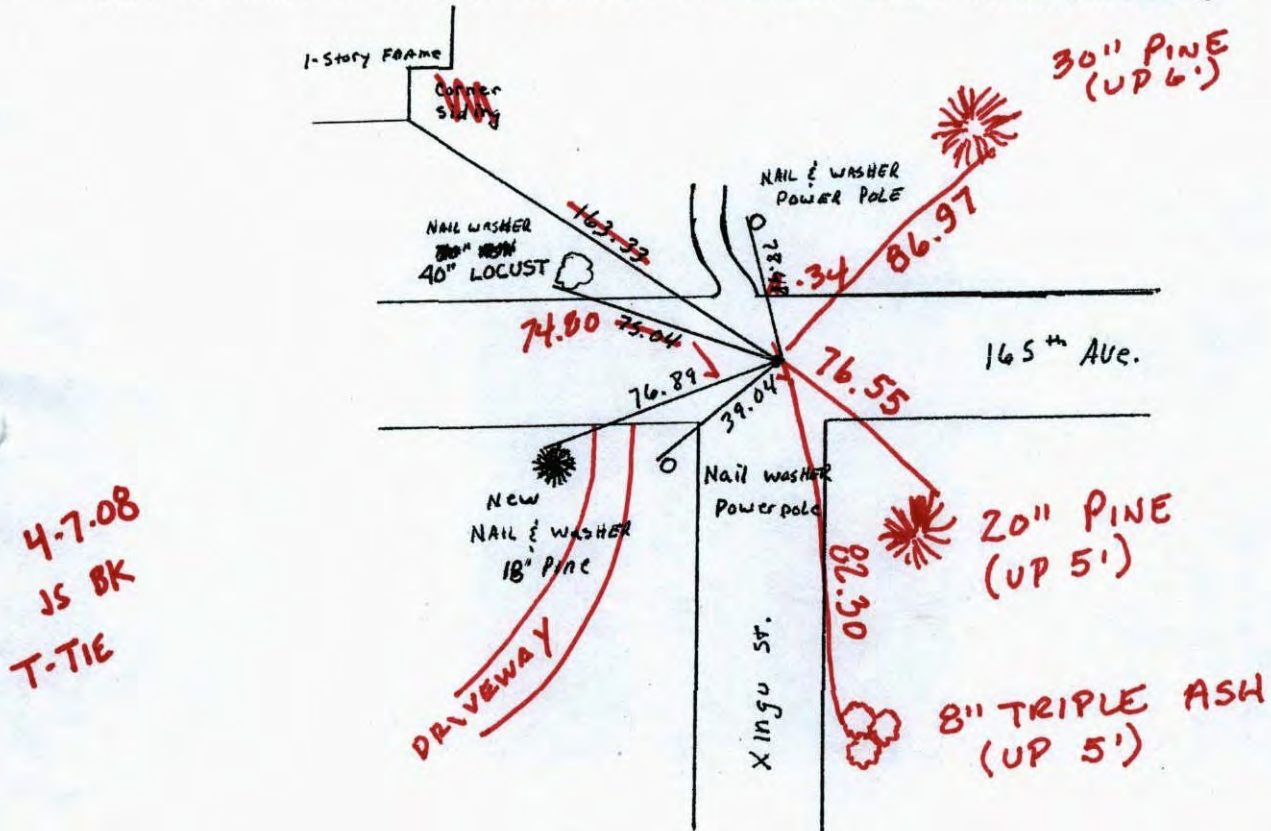
State of Minnesota

NORTH 1/4 Corner of Sec. 15 Township 32 Range 22

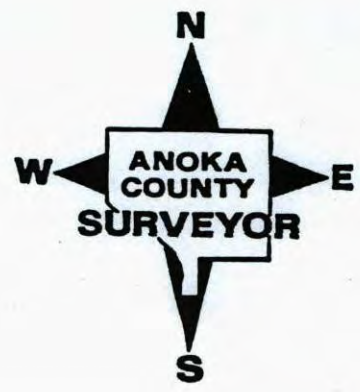
I hereby certify that on the 13 day of MAY, 1967, I found the described corner which was evidenced by well paint

and I further certify that to perpetuate the location of said corner, I did, at the exact location thereof, place a permanent marker consisting of CAST IRON monument
Down 4' 1"

which reference or witness monuments are located in the manner following:

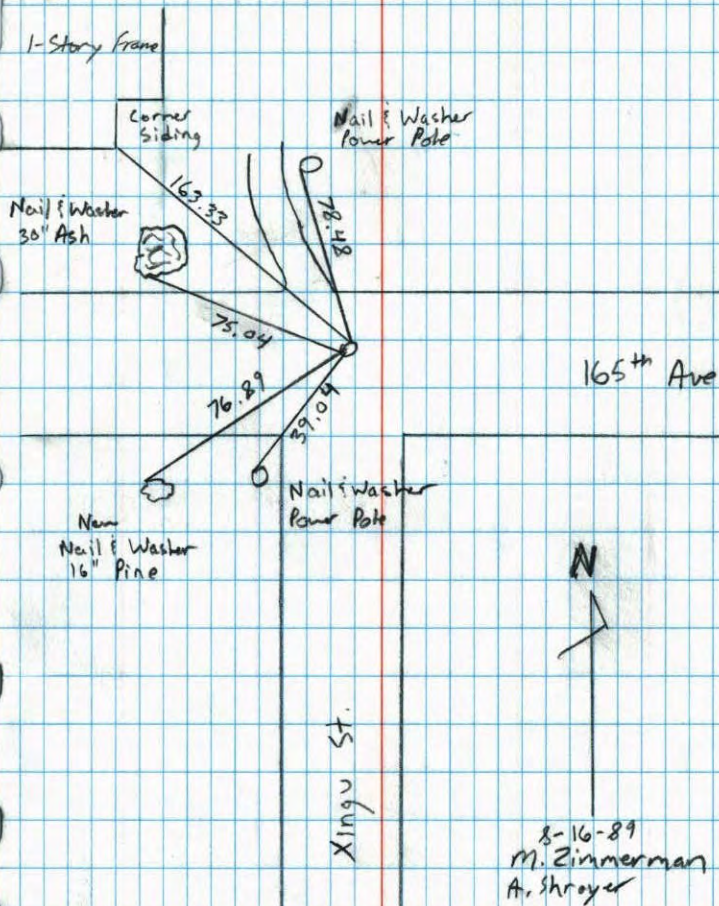


Revised date	Revised date	Revised date
8-9-85		
4-19-90		
8-16-89		
8-15-95		



North 1/4 Corner Sec. 15 T32 R22

Retied Cast Iron Monument



NO. 446

TELEPHONE

N 1/4 Cor. Sec. 15, T. 32, R. 22.

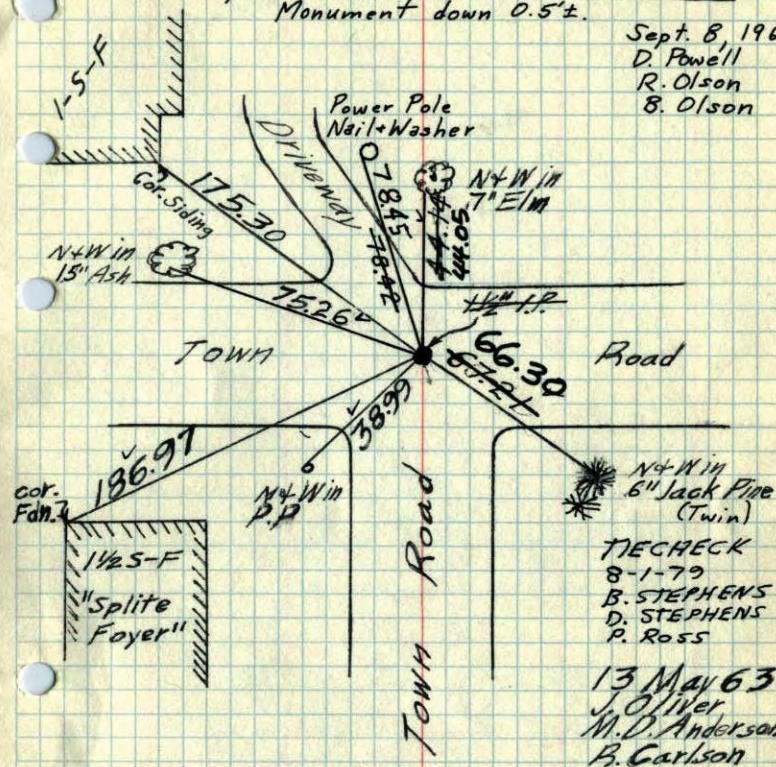
Found $\frac{1}{2}$ " I.P. down 5". Set during
 Survey of So. 1/2 of NW 1/4 by Don Hult
 Replaced Well Point with Cast Iron
 Monument down 0.5'±.

Sept. 8 1969

D. Powell

R. Olson

B. Olson



TEMPERATURE CORRECTED
 AND HORIZONTALLY
 TAPED MEASUREMENTS

TIE CHECK
 8-8-76
 G. ADAMS
 S. BRIEN
 J. STEPHENS

Tie Check
 June 5, 1973
 B. Olson
 D. Brien
 D. Farmer

ROLAND W. ANDERSON
 COUNTY SURVEYOR
 ANOKA COUNTY, MINNESOTA