

CERTIFICATE OF LOCATION OF GOVERNMENT CORNER  
 County of Anoka State of Minnesota  
Northwest Corner of Sec. 16 Township 32 Range 22

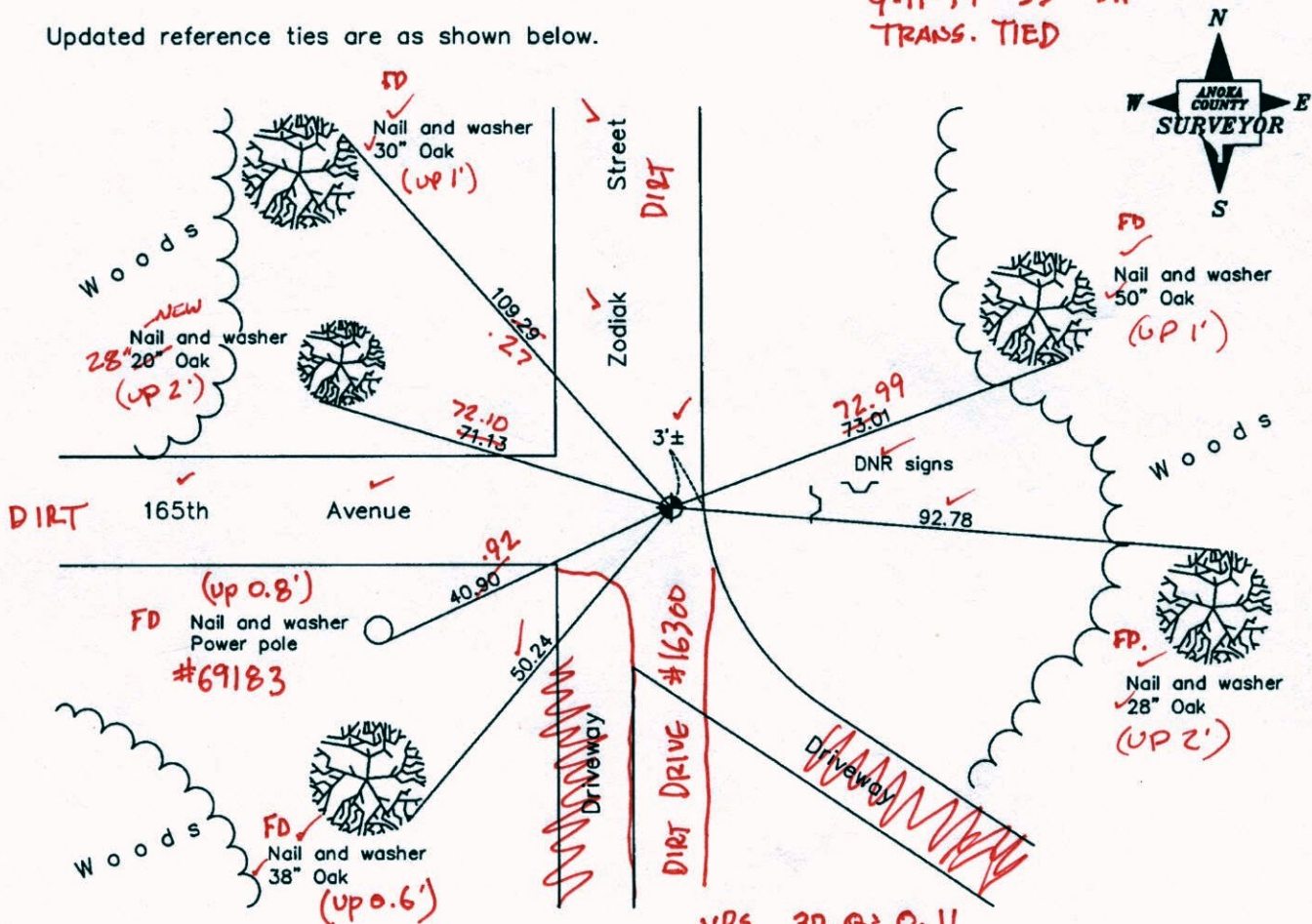
On the 6th day of December, 1963, the described corner was evidenced by a 4"x5" concrete monument

and to perpetuate the location of said corner, at the exact location thereof, a permanent marker was placed consisting of a cast iron monument

AND on the 24th day of June, 2003, said permanent marker was found down  $0.4 \pm$  and the ties were updated

Updated reference ties are as shown below.

9-11-14 SS SH  
 TRANS. TIED



VRS 3D. @ 0.11  
 N: 185203.9852  
 E: 542742.6853

Revised date
8/25/89
8/14/95
6/24/03

N.A.D. 1983 Coordinates (1996 Adjustment)	
County Project Coordinates	
Northing	185203.9335
Easting	542742.7546
Date	6/24/03

I hereby certify that this United States public land survey monument record is correct and complete to the best of my knowledge and belief.

*Larry D. Hoium* Date 6/24/03  
 Larry D. Hoium, Anoka County Surveyor  
 Minnesota License Number 18165



# CERTIFICATE OF LOCATION OF GOVERNMENT CORNER

County of Anoka

State of Minnesota

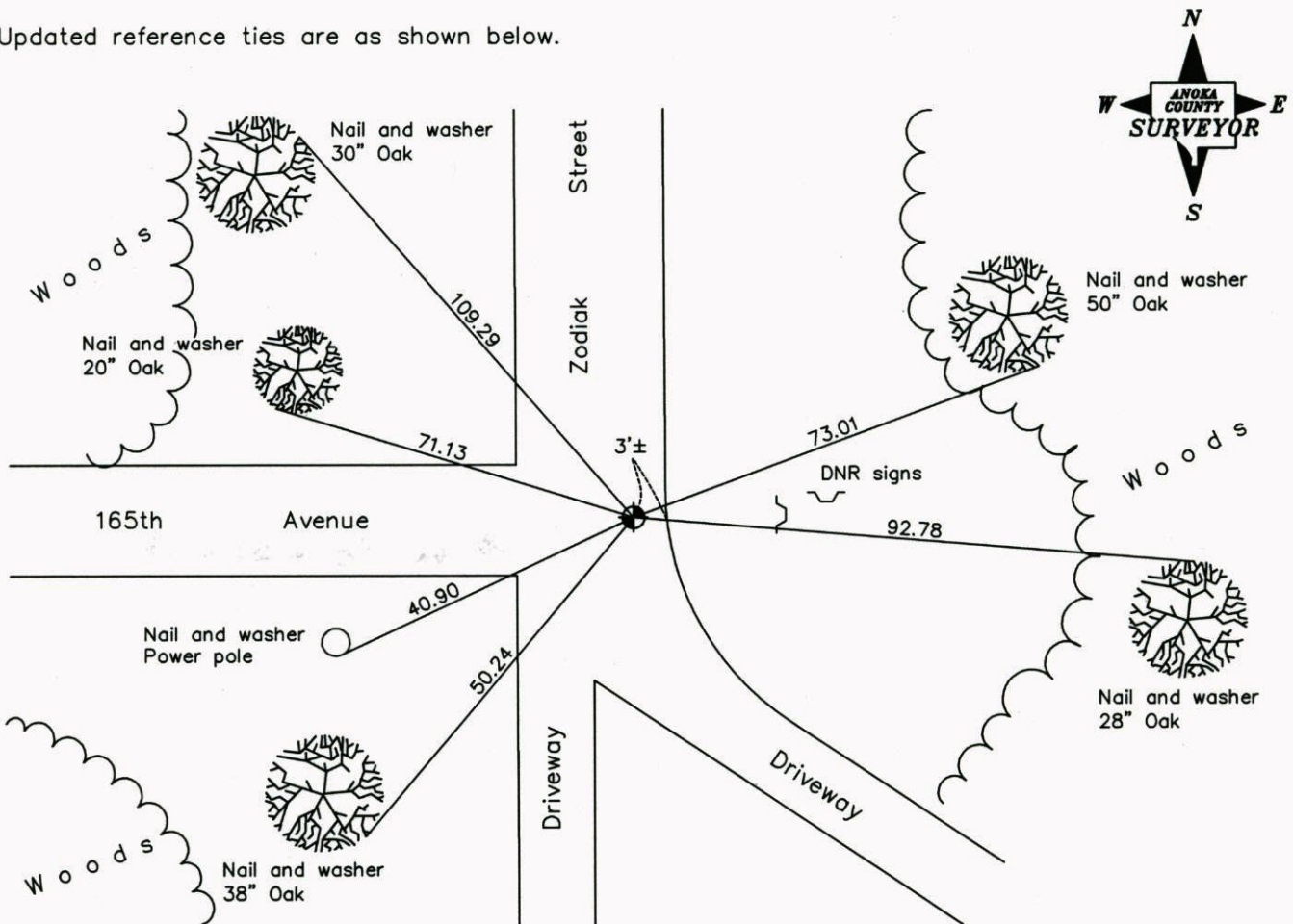
Northwest Corner of Sec. 16 Township 32 Range 22

On the 6th day of December, 1963, the described corner was evidenced by a 4"X5" concrete monument

and to perpetuate the location of said corner, at the exact location thereof, a permanent marker was placed consisting of a cast iron monument

AND on the 24th day of June, 2003, said permanent marker was found down 0.4'± and the ties were updated

Updated reference ties are as shown below.



**Revised date**

8/25/89
8/14/95
6/24/03

**N.A.D. 1983 Coordinates  
(1996 Adjustment)**

County Project Coordinates	
Northing	<u>185203.9335</u>
Easting	<u>542742.7546</u>
Date	<u>6/24/03</u>

I hereby certify that this United States public land survey monument record is correct and complete to the best of my knowledge and belief.

*Larry D. Hoium* Date 6/24/03  
 \_\_\_\_\_, Anoka County Surveyor  
 Minnesota License Number 18165



# CERTIFICATE OF LOCATION OF GOVERNMENT CORNER

County of Anoka

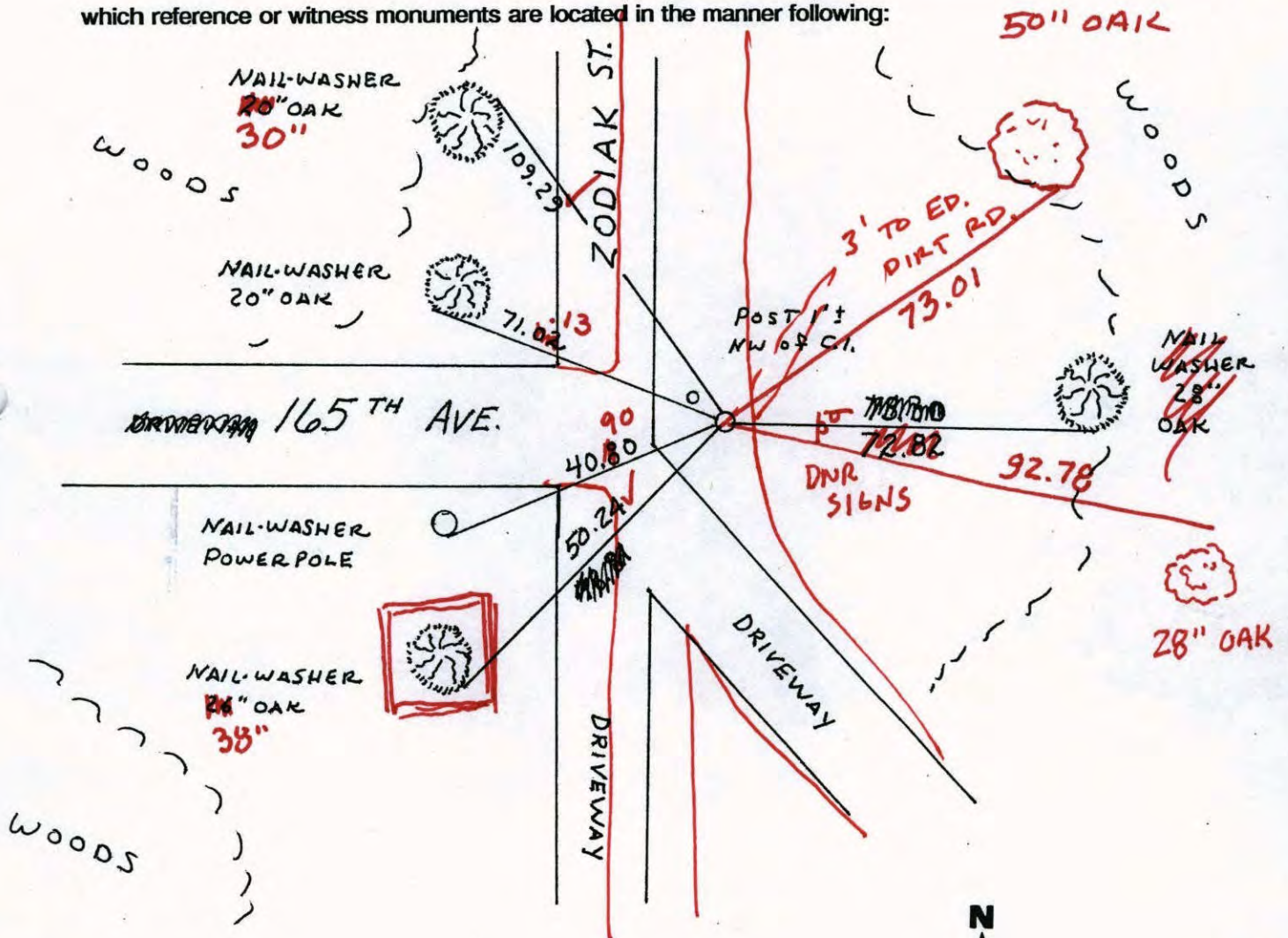
State of Minnesota

NORTHWEST Corner of Sec. 16 Township 32 Range 22

I hereby certify that on the 6<sup>TH</sup> day of DEC., 1963, I found the described corner which was evidenced by 4" x 5" CONCRETE MONUMENT

and I further certify that to perpetuate the location of said corner, I did, at the exact location thereof, place a permanent marker consisting of CAST IRON MONUMENT (DOWN 0.4')

which reference or witness monuments are located in the manner following:



Revised date	Revised date	Revised date
7-7-82		
8-25-89		
8-14-95		





# CERTIFICATE OF LOCATION OF GOVERNMENT CORNER

County of Anoka

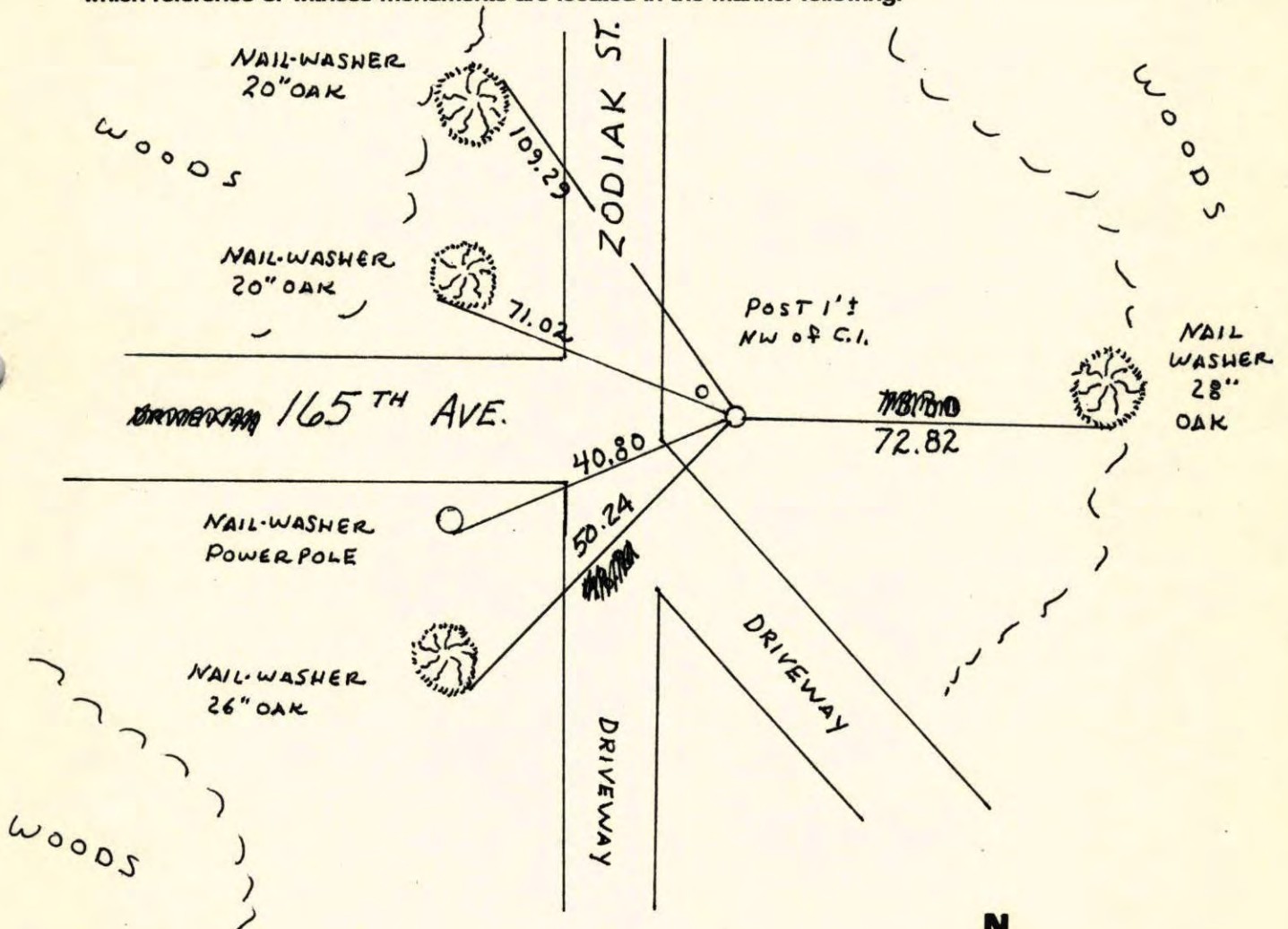
State of Minnesota

NORTHWEST Corner of Sec. 16 Township 32 Range 22

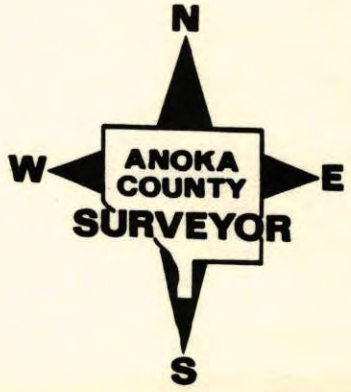
I hereby certify that on the 6<sup>TH</sup> day of DEC., 1963, I found the described corner which was evidenced by 4" x 5" CONCRETE MONUMENT

and I further certify that to perpetuate the location of said corner, I did, at the exact location thereof, place a permanent marker consisting of CAST IRON MONUMENT

which reference or witness monuments are located in the manner following:



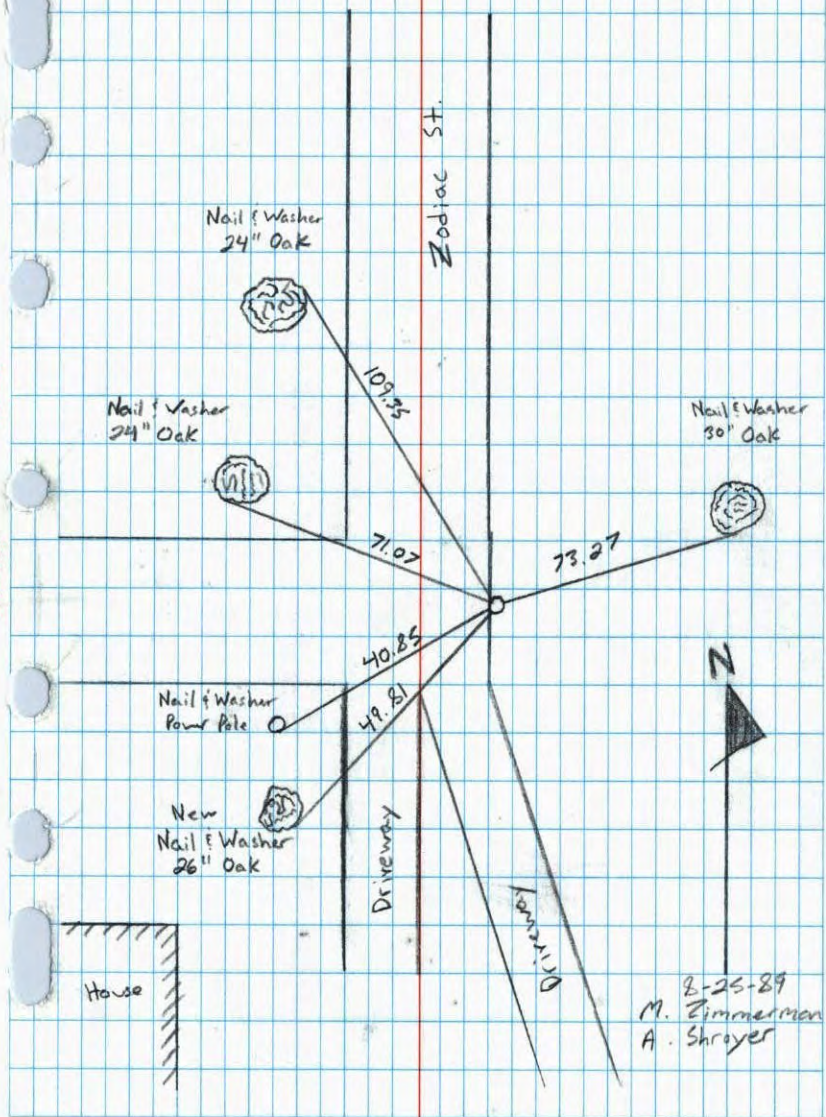
Revised date	Revised date	Revised date
7-7-82		
8-25-89		
8-14-95		





Northwest Corner Sec. 16 T32 R22

Retied Cast Iron Monument



NW Cor. Sec. 16, T32, R22

Found 4" X 5" Concrete Monument (up 16") From

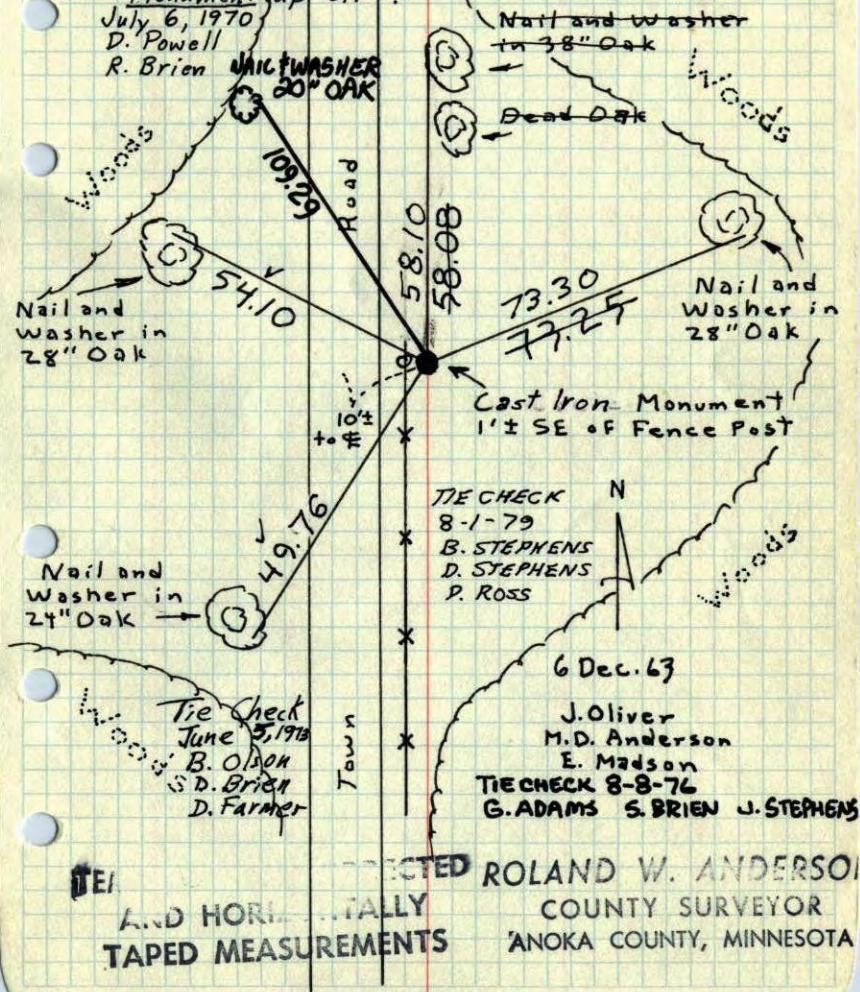
Don Hults ties. Top was 0.3' out of plumb to North. Straightened up and retied.

Replaced broken Concrete with Cast Iron Monument (up 0.1').

July 6, 1970

D. Powell

R. Brien



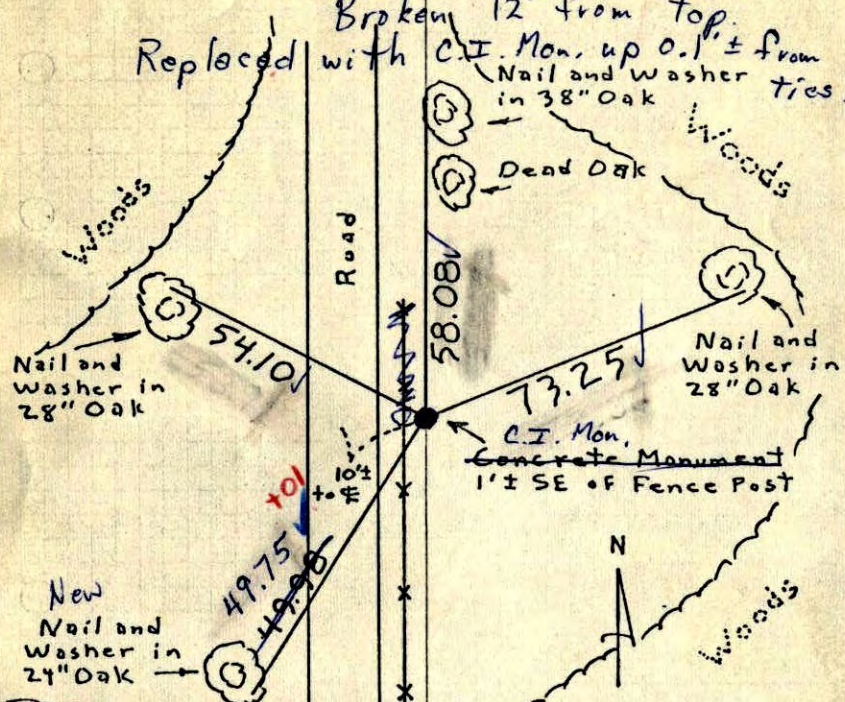


XX

# NW Cor. Sec. 16, T32, R22

Found 4"X5" Concrete Monument (up 16") From Don Hults ties. Top was 0.3' out of plumb to North. Straightened up and retied.

Broken 12" from top. Replaced with C.I. Mon. up 0.1' ± from Nail and Washer ties in 38" Oak

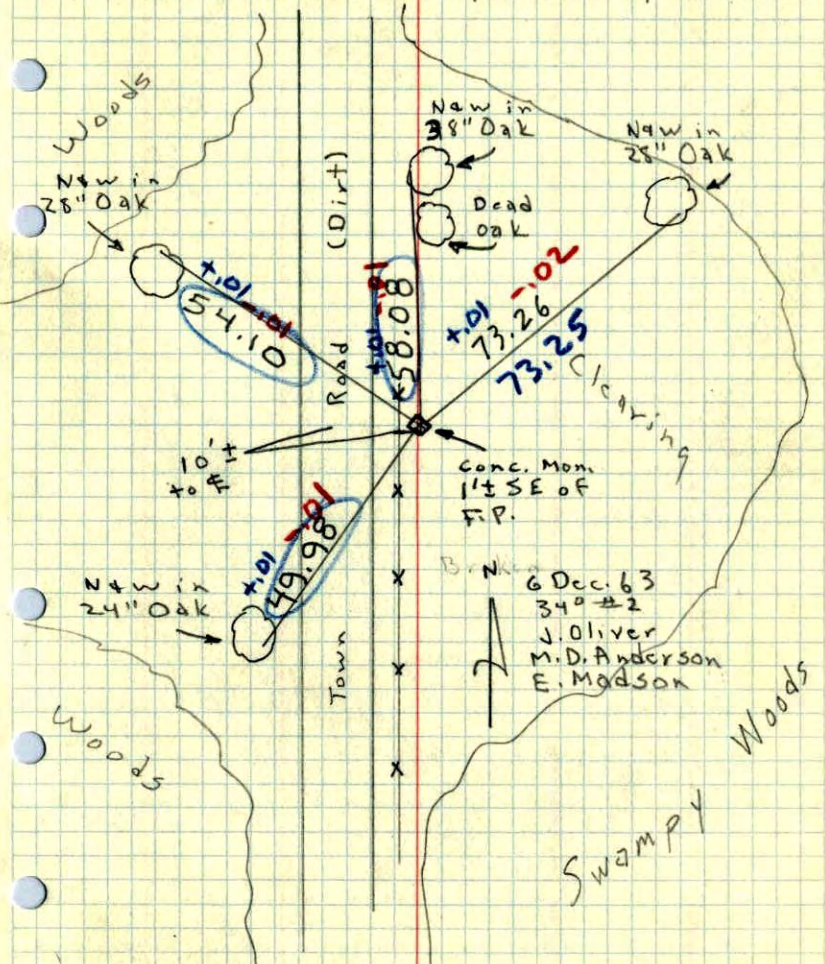


7/6/70  
 #10-800 ✓  
 P. Powell  
 R. Brien.

ROLAND W. ANDERSON  
 COUNTY SURVEYOR  
 ANOKA COUNTY, MINNESOTA

# NW Cor. Sec. 16, T32, R 22

Found 4"X5" Conc. Mon. (Sticking up 16") From Don Hults ties. Top was 0.3' ± out of plumb to north. Straightened up and retied.



6 Dec. 63  
 34° #2  
 J. Oliver  
 M.D. Anderson  
 E. Madson

SWAMPY



NW cor Sec 16, T32N, R22W

Tied  
6 Dec 63

Town  
Rd



oak

oak

Concrete mound  
1' above ground  
by Co. Post

- ① 50.82' (W side) oak
- ② 72.76' (SE side) 24" oak
- ③ 50.27' (SE side) oak
- ④ 53.97' 22" oak (SE side)