

# CERTIFICATE OF LOCATION OF GOVERNMENT CORNER

County of Anoka

State of Minnesota

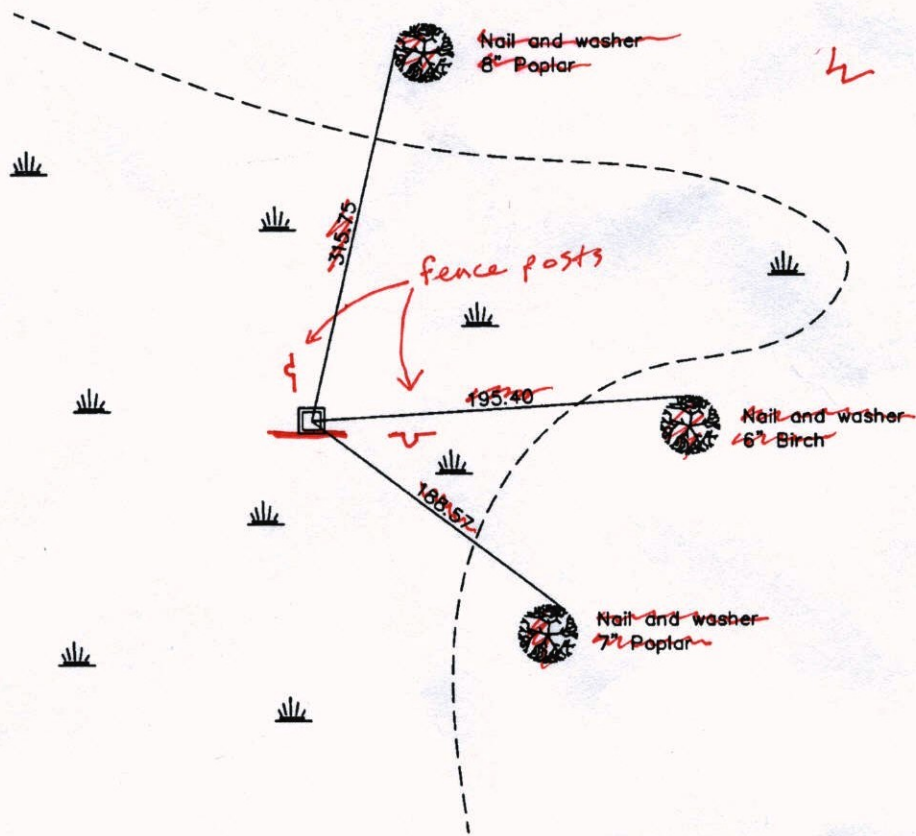
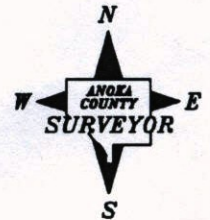
South 1/4 Corner of Sec. 8 Township 32 Range 22

On the 15th day of February, 1980, the described corner was evidenced by a 1" iron pipe

and to perpetuate the location of said corner, at the exact location thereof, a permanent marker was placed consisting of a Telspar monument w/ SIGN ATTACHED FACING SOUTH  
(MON. UP 4'±)

AND on the 13th day of February, 2006, said permanent marker was found

Updated reference ties are as shown below.



12-15-14  
BK-SS  
VRS

3DQ = 0.04      N = 185194.7352      E = 540071.2565

| Revised date |
|--------------|
| 1985         |
| 8/17/95      |
| 2/13/06      |
|              |
|              |

| N.A.D. 1983 Coordinates<br>(1996 Adjustment) |             |
|--|-------------|
| County Project Coordinates                   |             |
| Northing                                     | 185194.7313 |
| Easting                                      | 540071.2278 |
| Date   | 2/13/06     |

I hereby certify that this United States public land survey monument record is correct and complete to the best of my knowledge and belief.

*Larry D. Hoiium*      Date 2/13/06

\_\_\_\_\_  
Larry D. Hoiium, Anoka County Surveyor

Minnesota License Number 18165

N = 185194.7313

# CERTIFICATE OF LOCATION OF GOVERNMENT CORNER

County of Anoka

State of Minnesota

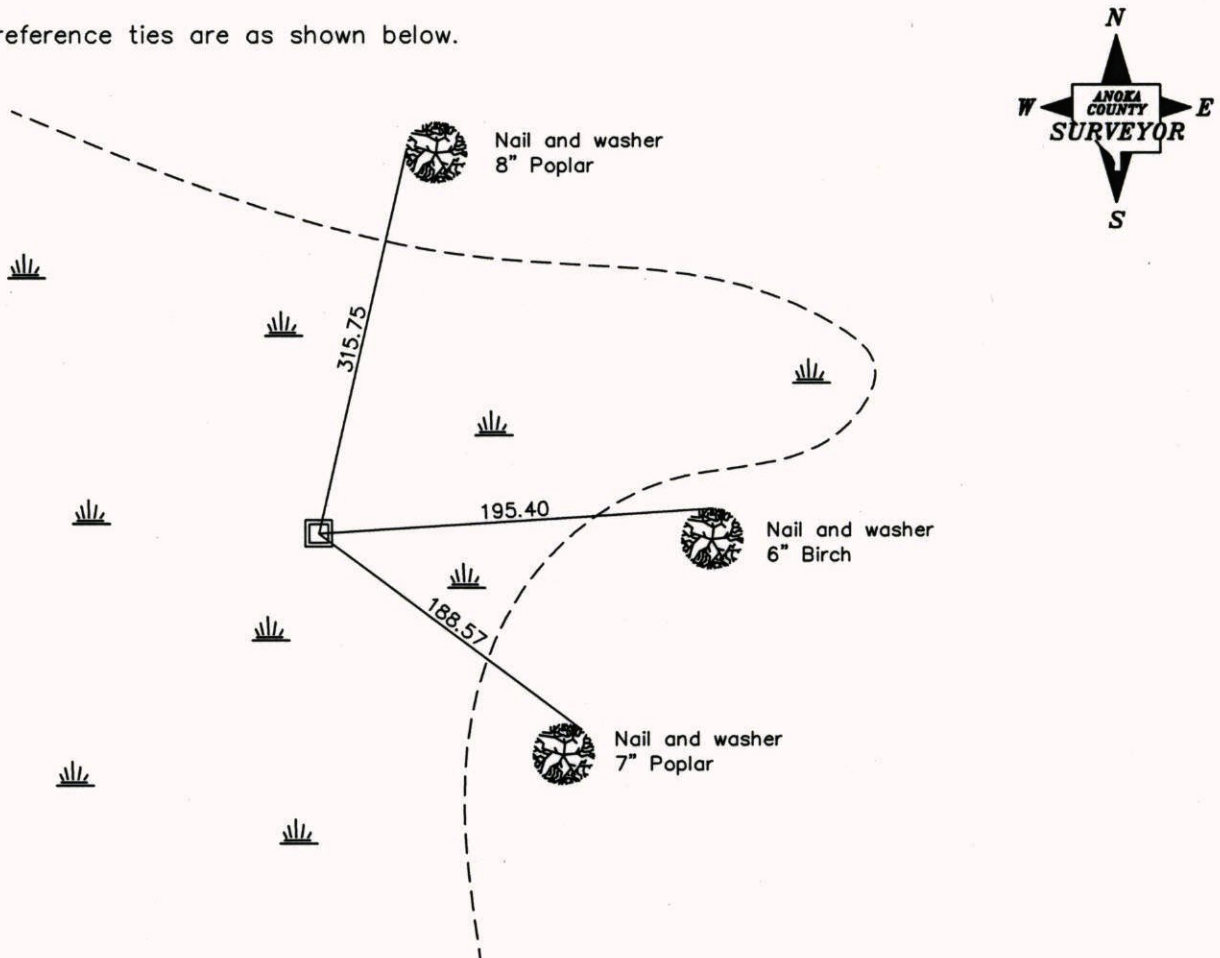
South 1/4 Corner of Sec. 8 Township 32 Range 22

On the 15th day of February, 1980, the described corner was evidenced by a 1" iron pipe

and to perpetuate the location of said corner, at the exact location thereof, a permanent marker was placed consisting of a Telspar monument

AND on the 13th day of February, 2006, said permanent marker was found

Updated reference ties are as shown below.



Revised date

|         |
|---------|
| 1985    |
| 8/17/95 |
| 2/13/06 |
|         |
|         |

N.A.D. 1983 Coordinates  
(1996 Adjustment)

|                             |
|-----------------------------|
| County Project Coordinates  |
| Northing <u>185194.7313</u> |
| Easting <u>540071.2278</u>  |
| Date <u>2/13/06</u>         |

I hereby certify that this United States public land survey monument record is correct and complete to the best of my knowledge and belief.

*Larry D. Hoium* Date 2/13/06  
Larry D. Hoium, Anoka County Surveyor  
 Minnesota License Number 18165

# CERTIFICATE OF LOCATION OF GOVERNMENT CORNER

County of Anoka

State of Minnesota

SOUTH QTR. Corner of Sec. 8 Township 32 Range 22

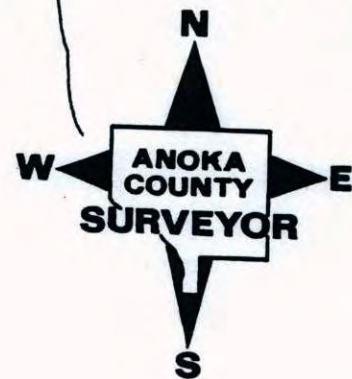
I hereby certify that on the 15 day of FEB., 1980, I found the described corner which was evidenced by 1" I.P.

and I further certify that to perpetuate the location of said corner, I did, at the exact location thereof, place a permanent marker consisting of ~~RED, WHITE I. P.~~ TELSPAR.

which reference or witness monuments are located in the manner following:



| Revised date | Revised date | Revised date |
|--------------|--------------|--------------|
| WC 85        |              |              |
| 8-17-95      |              |              |
|              |              |              |
|              |              |              |
|              |              |              |
|              |              |              |



# CERTIFICATE OF LOCATION OF GOVERNMENT CORNER

County of Anoka

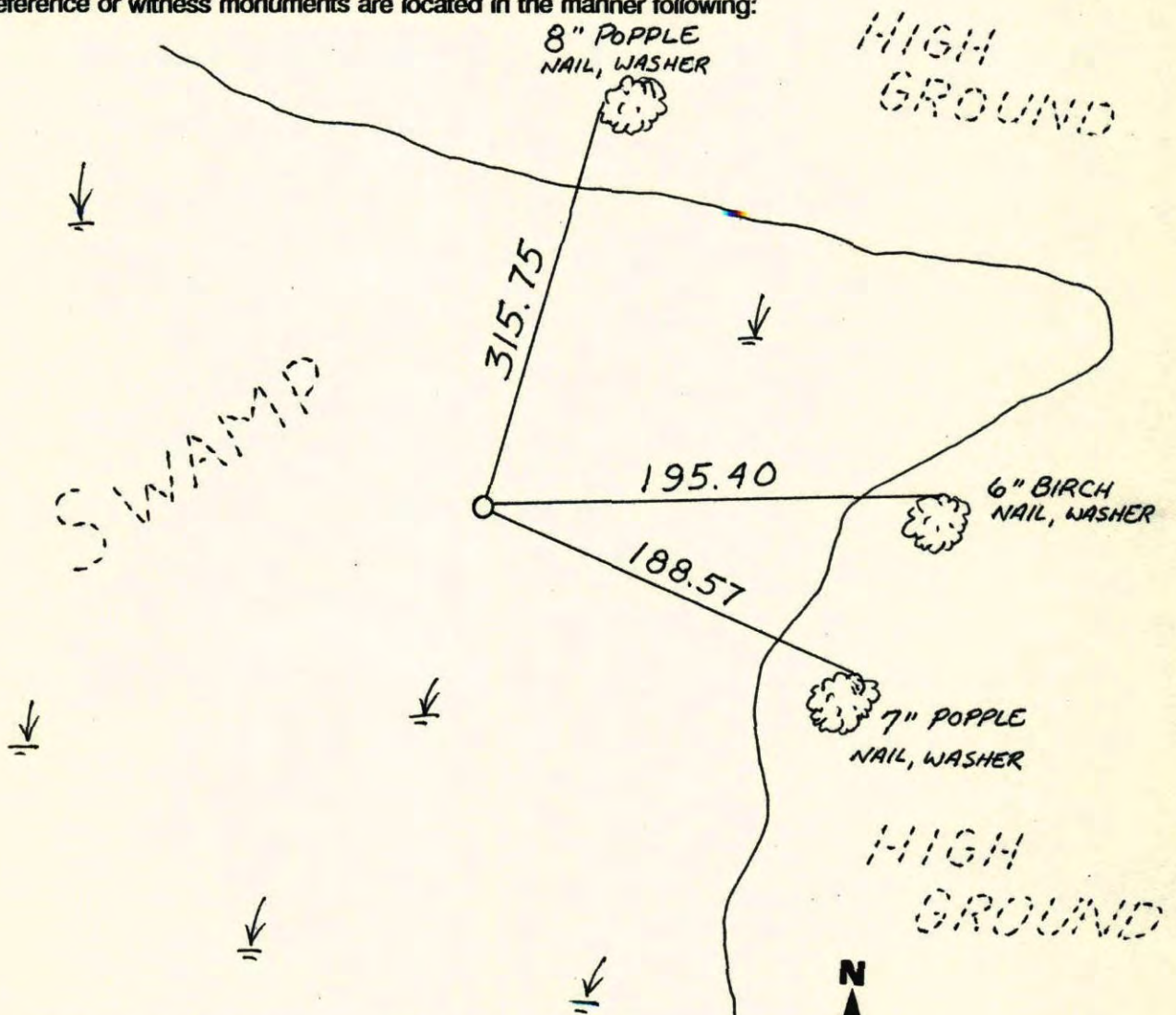
State of Minnesota

SOUTH QTR. Corner of Sec. 8 Township 32 Range 22

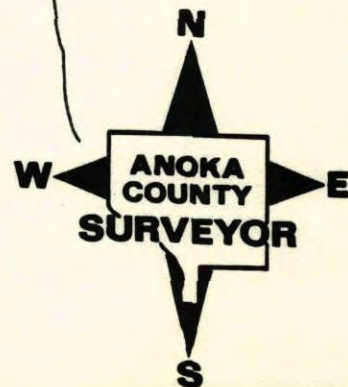
I hereby certify that on the 15 day of FEB, 1980, I found the described corner which was evidenced by 1" I.P.

and I further certify that to perpetuate the location of said corner, I did, at the exact location thereof, place a permanent marker consisting of RED, WHITE I. P.

which reference or witness monuments are located in the manner following:

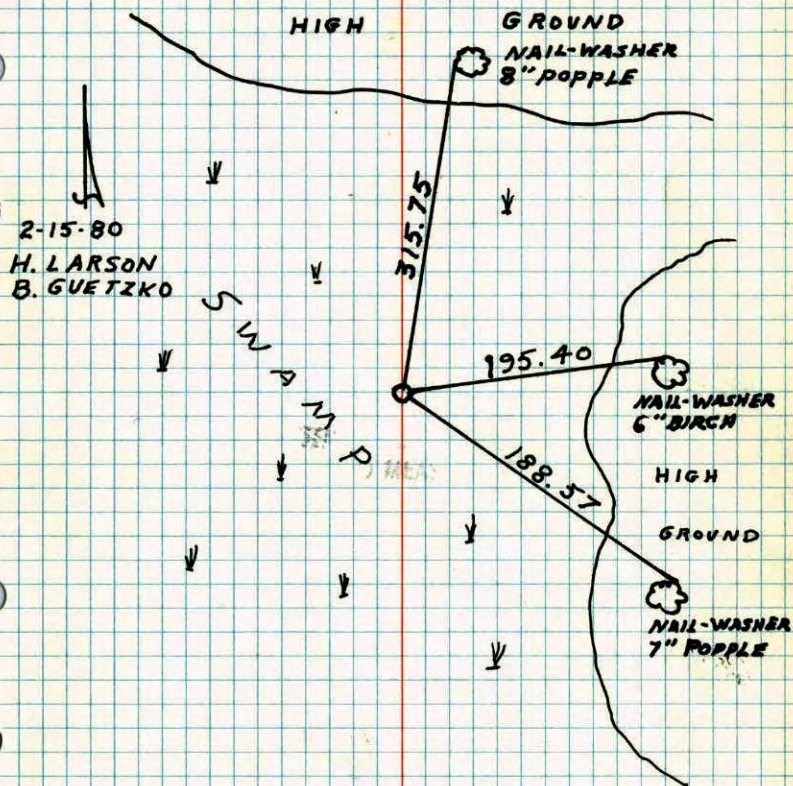


| Revised date | Revised date | Revised date |
|--------------|--------------|--------------|
| WC 85        |              |              |
| 8-17-95      |              |              |
|              |              |              |
|              |              |              |
|              |              |              |
|              |              |              |



## S 1/4 COR. SECTION 8 T32 R22

REPLACED 1" IRON PIPE SET BY  
"D.N.R." WITH RED AND WHITE  
IRON PIPE. UP 3'±

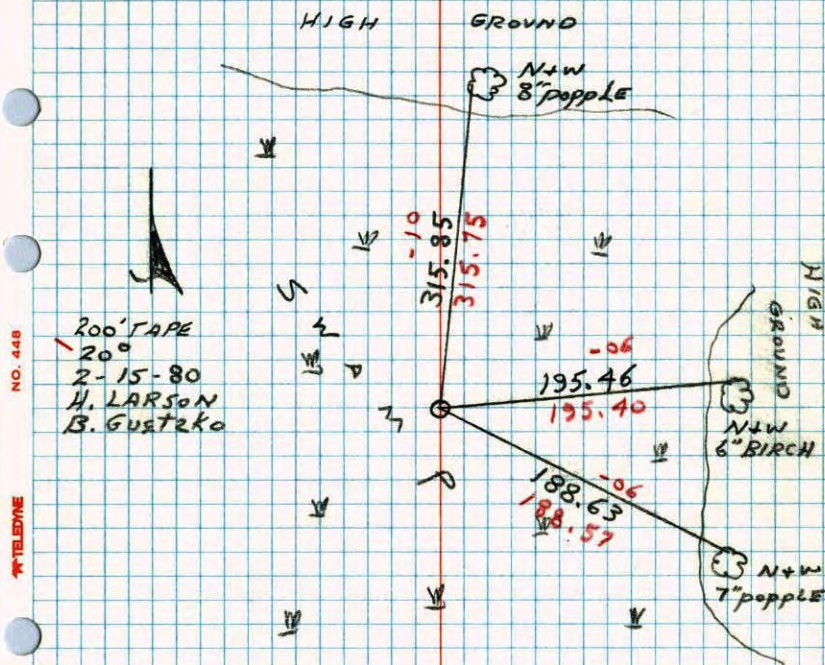


TEMPERATURE CORRECTED  
AND HORIZONTALLY  
TAPED MEASUREMENTS

ROLAND W. ANDERSON  
COUNTY SURVEYOR  
ANOKA COUNTY, MINNESOTA

## S 1/4 CORNER SECTION 8 T32 R22

REPLACED 1" IRON PIPE SET BY D.N.R.  
WITH RED AND WHITE IRON PIPE UP 3'±



NO. 448

TELEPHONE