

# CERTIFICATE OF LOCATION OF GOVERNMENT CORNER

County of Anoka

State of Minnesota

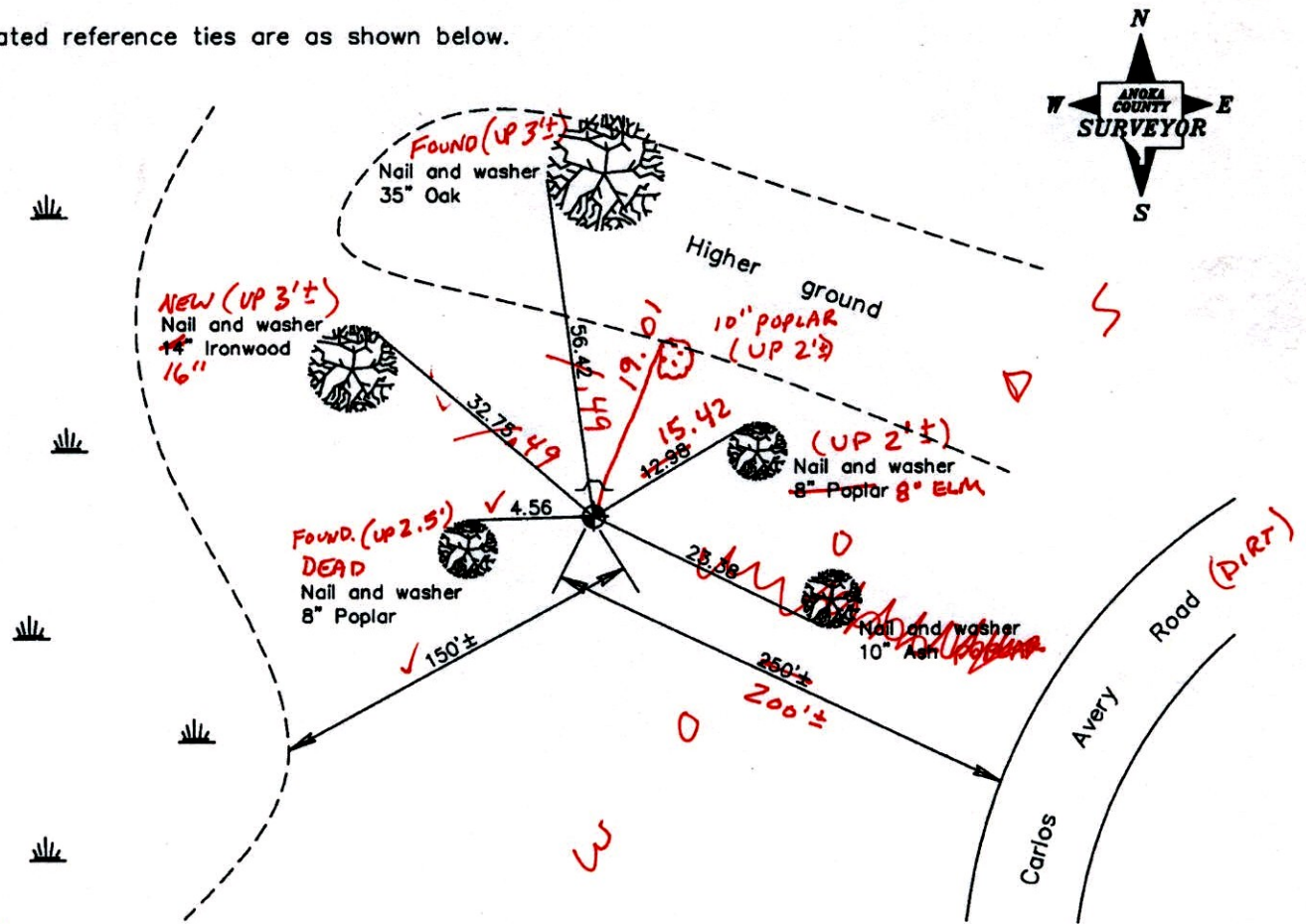
South  $\frac{1}{4}$  Corner of Sec. 7 Township 32 Range 22

On the 20th day of September, 1980, the described corner was evidenced by area resurvey

and to perpetuate the location of said corner, at the exact location thereof, a permanent marker was placed consisting of a cast iron monument with a sign and post on the north side

AND on the 19th day of December, 2007, said permanent marker was found and the ties were updated

Updated reference ties are as shown below.



9-25-14  
BK-SS  
TAPED

Revised date
7/05/90
8/17/95
12/19/07

N.A.D. 1983 Coordinates (1996 Adjustment)	
County Project Coordinates	
Northing	185166.3962
Easting	534747.6555
Date	2/02/06

I hereby certify that this United States public land survey monument record is correct and complete to the best of my knowledge and belief.

*Larry D. Hoium* Date 12/19/07

Larry D. Hoium, Anoka County Surveyor

Minnesota License Number 18165

# CERTIFICATE OF LOCATION OF GOVERNMENT CORNER

County of Anoka

State of Minnesota

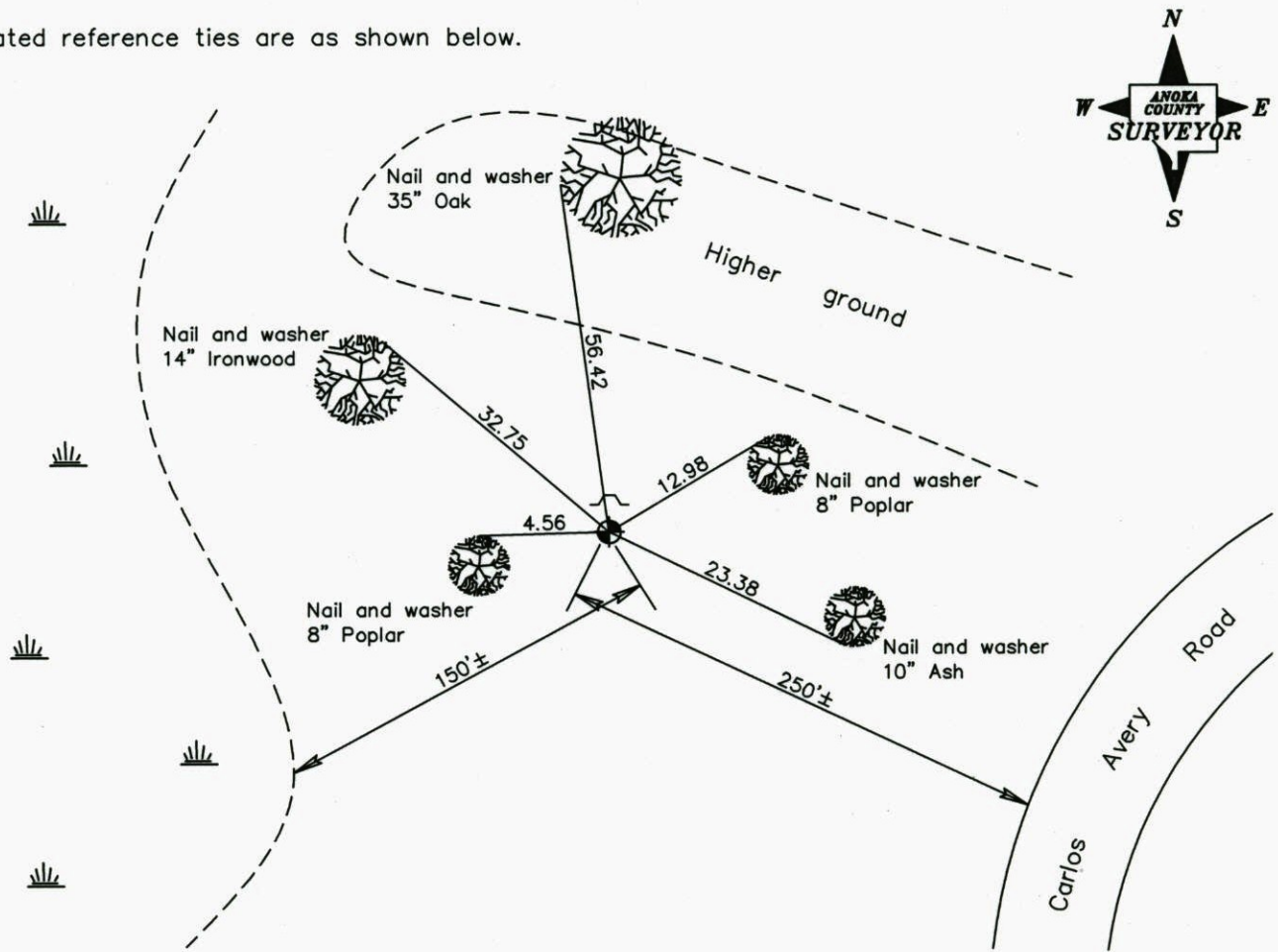
South 1/4 Corner of Sec. 7 Township 32 Range 22

On the 20th day of September, 1980, the described corner was evidenced by area resurvey

and to perpetuate the location of said corner, at the exact location thereof, a permanent marker was placed consisting of a cast iron monument with a sign and post on the north side

AND on the 19th day of December, 2007, said permanent marker was found and the ties were updated

Updated reference ties are as shown below.



Revised date
7/05/90
8/17/95
12/19/07

N.A.D. 1983 Coordinates (1996 Adjustment)	
County Project Coordinates	
Northing	<u>185166.3962</u>
Easting	<u>534747.6555</u>
Date	<u>2/02/06</u>

I hereby certify that this United States public land survey monument record is correct and complete to the best of my knowledge and belief.

*Larry D. Hoium* Date 12/19/07

Larry D. Hoium, Anoka County Surveyor

Minnesota License Number 18165

# CERTIFICATE OF LOCATION OF GOVERNMENT CORNER

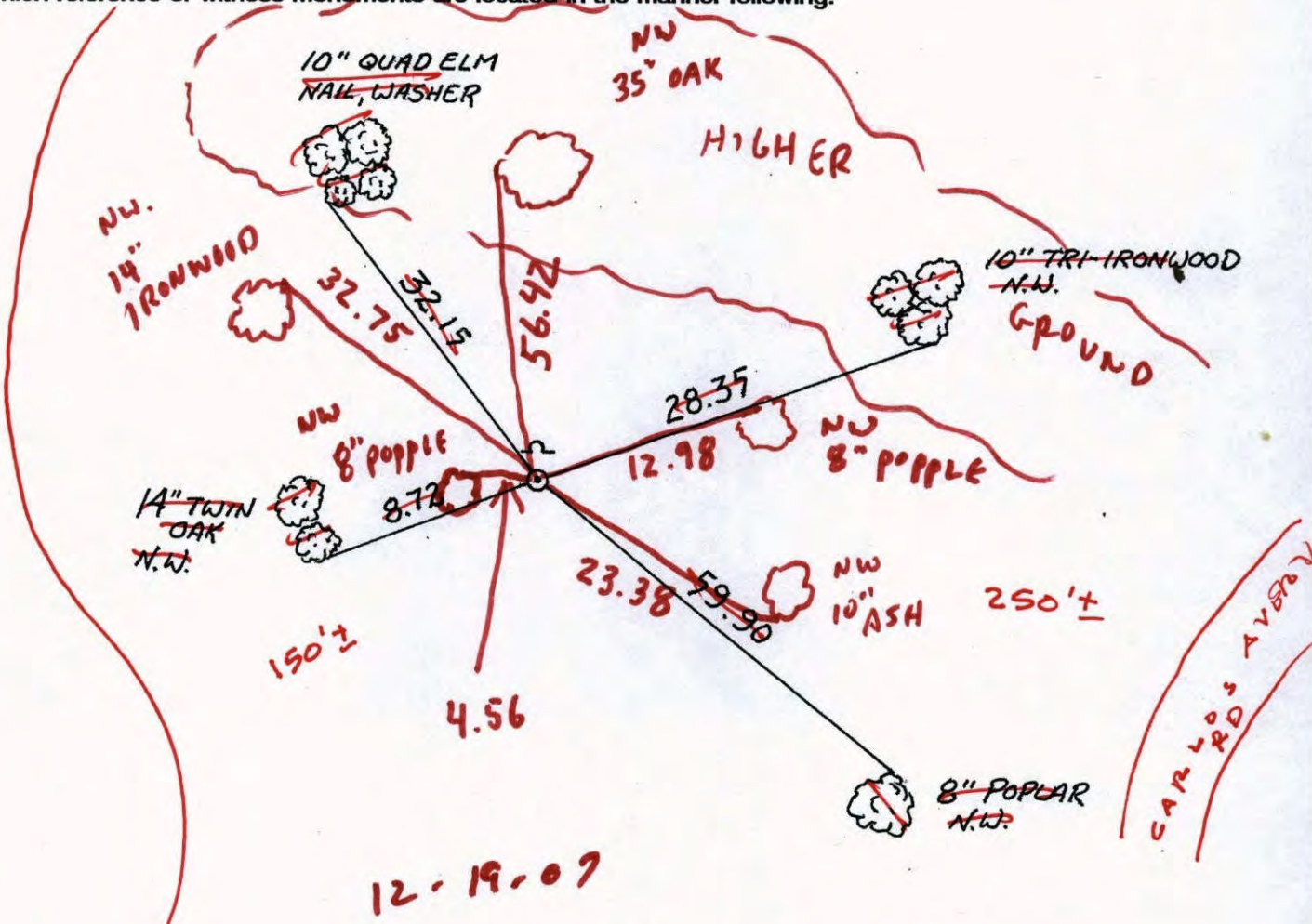
County of Anoka                      State of Minnesota

SOUTH QTR. Corner of Sec. 7 Township 32 Range 22

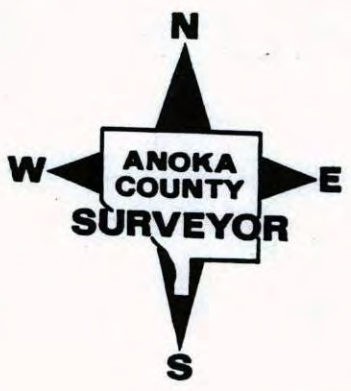
I hereby certify that on the 20 day of SEPT., 1980, I found the described corner which was evidenced by AREA RESURVEY

and I further certify that to perpetuate the location of said corner, I did, at the exact location thereof, place a permanent marker consisting of CAST IRON MON. SIGN AND POST ON NORTH SIDE

which reference or witness monuments are located in the manner following:



Revised date	Revised date	Revised date
7-5-90		
8-17-95		



# CERTIFICATE OF LOCATION OF GOVERNMENT CORNER

County of Anoka

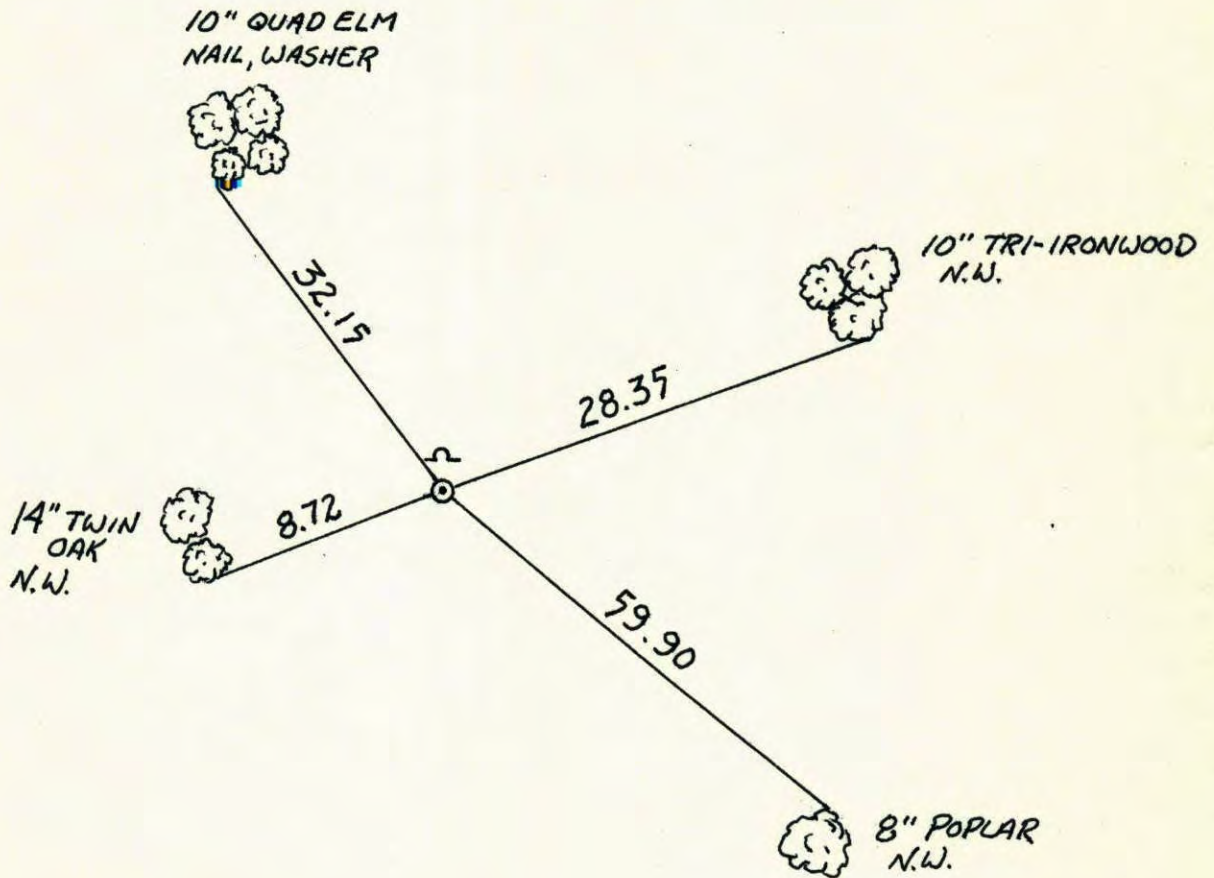
State of Minnesota

SOUTH QTR. Corner of Sec. 7 Township 32 Range 22

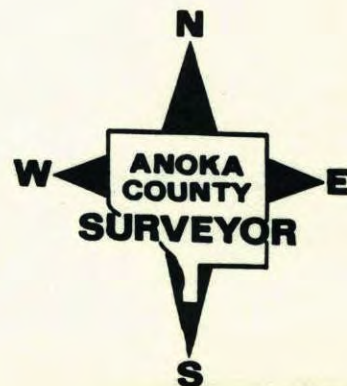
I hereby certify that on the 20 day of SEPT., 1980, I found the described corner which was evidenced by AREA RESURVEY

and I further certify that to perpetuate the location of said corner, I did, at the exact location thereof, place a permanent marker consisting of CAST IRON MON. SIGN AND POST ON NORTH SIDE

which reference or witness monuments are located in the manner following:

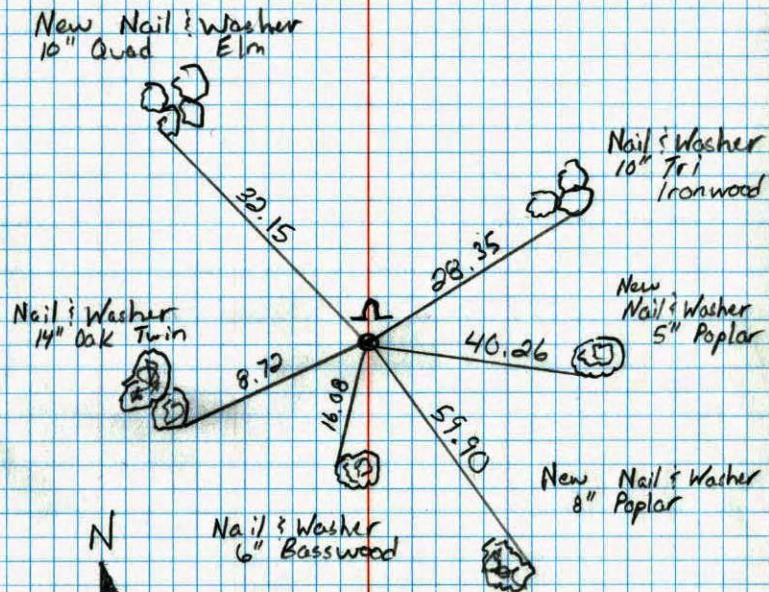


Revised date	Revised date	Revised date
7-5-90		
8-17-95		



South 1/4 Corner Sec. 7 T32 R22

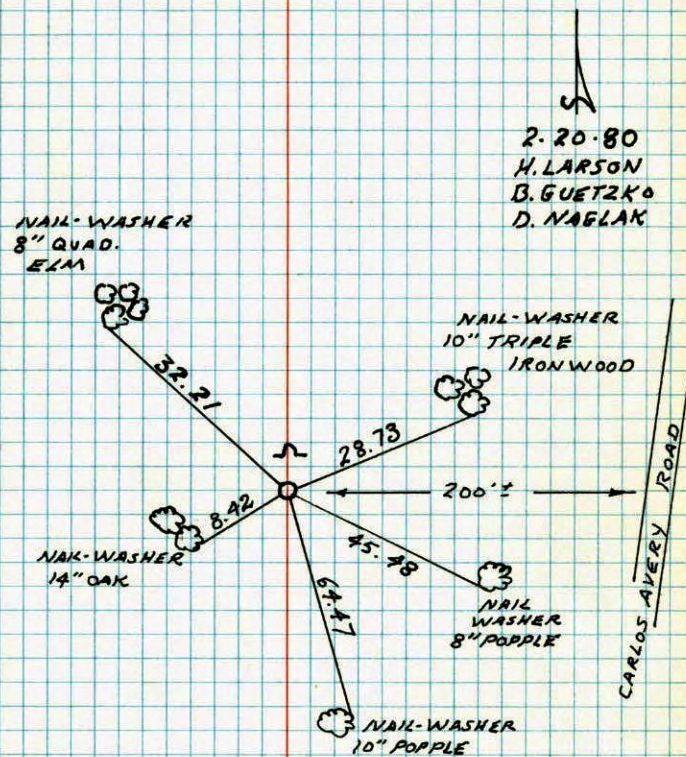
Retied Cast Iron Monument



7-5-90  
 M. Zimmerman  
 D. Klersy

S 1/4 COR. SECTION 7 T32 R22

SET CAST IRON MONUMENT FROM  
 AREA RESURVEY. C.I. FLUSH WITH  
 SIGN AND POST ON NORTH SIDE.



2-20-80  
 H. LARSON  
 B. GUETZKO  
 D. NAGLAK

TEMPERATURE CORRECTED  
 AND HORIZONTALLY  
 TAPED MEASUREMENTS

ROLAND W. ANDERSON  
 COUNTY SURVEYOR  
 ANOKA COUNTY, MINNESOTA

WV

# S 1/4 CORNER SECTION 7 T32 R22

SET CAST IRON MONUMENT FROM  
AREA RESURVEY. C.I. FLUSH WITH SIGN  
AND POST ON NORTH SIDE.

200' 40"  
2-20-80  
H. LARSON  
B. GUTZKO  
D. NAGLAK

N+W  
8" QUAD  
ELM



32.21

N+W  
10" TRIPLE  
IRONWOOD



28.73

200'±

N+W  
14" OAK



8.42

6' x 8'

45.49  
45.01  
45.98



N+W  
8" POPPLE

N+W  
10" POPPLE



CARLOS AVENUE ROAD

NO. 448

TELEPHONE