

CERTIFICATE OF LOCATION OF GOVERNMENT CORNER

County of Anoka

State of Minnesota

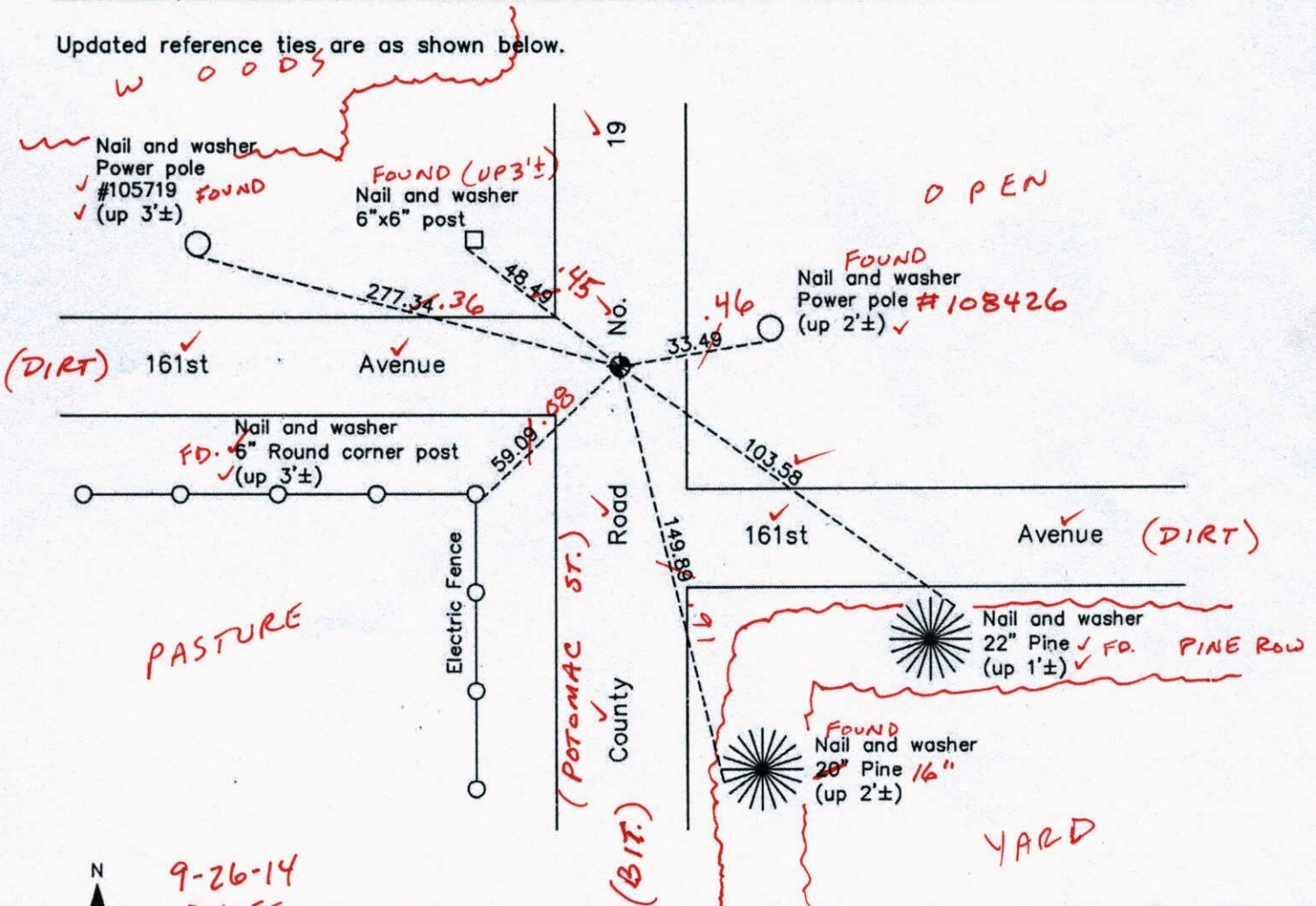
West 1/4 Corner of Sec. 15 Township 32 Range 22

On the 13th day of May, 1963, the described corner was evidenced by a railroad spike

and to perpetuate the location of said corner, at the exact location thereof, a permanent marker was placed consisting of a cast iron monument (MON. 2'± WEST OF E)

AND on the 19th day of September, 2012, said permanent marker was found down 0.5' and broken. Replaced with a cast iron monument and the ties were updated.

Updated reference ties are as shown below.



N
W ANOKA COUNTY SURVEYOR E
S

9-26-14
BK-55
TOTAL STA.

Revision Date 12/17/13

N.A.D. 1983 Coordinates
(1996 Adjustment)

County Project Coordinates	
Northing	182601.5735
Easting	547922.5649
Date	6/16/03

I hereby certify that this United States public land survey monument record is correct and complete to the best of my knowledge and belief.

Larry D. Hoium Date 12/17/13

Larry D. Hoium, Anoka County Surveyor
Minnesota License Number 18165

CERTIFICATE OF LOCATION OF GOVERNMENT CORNER

County of Anoka

State of Minnesota

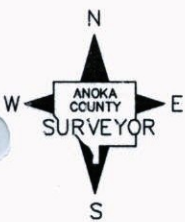
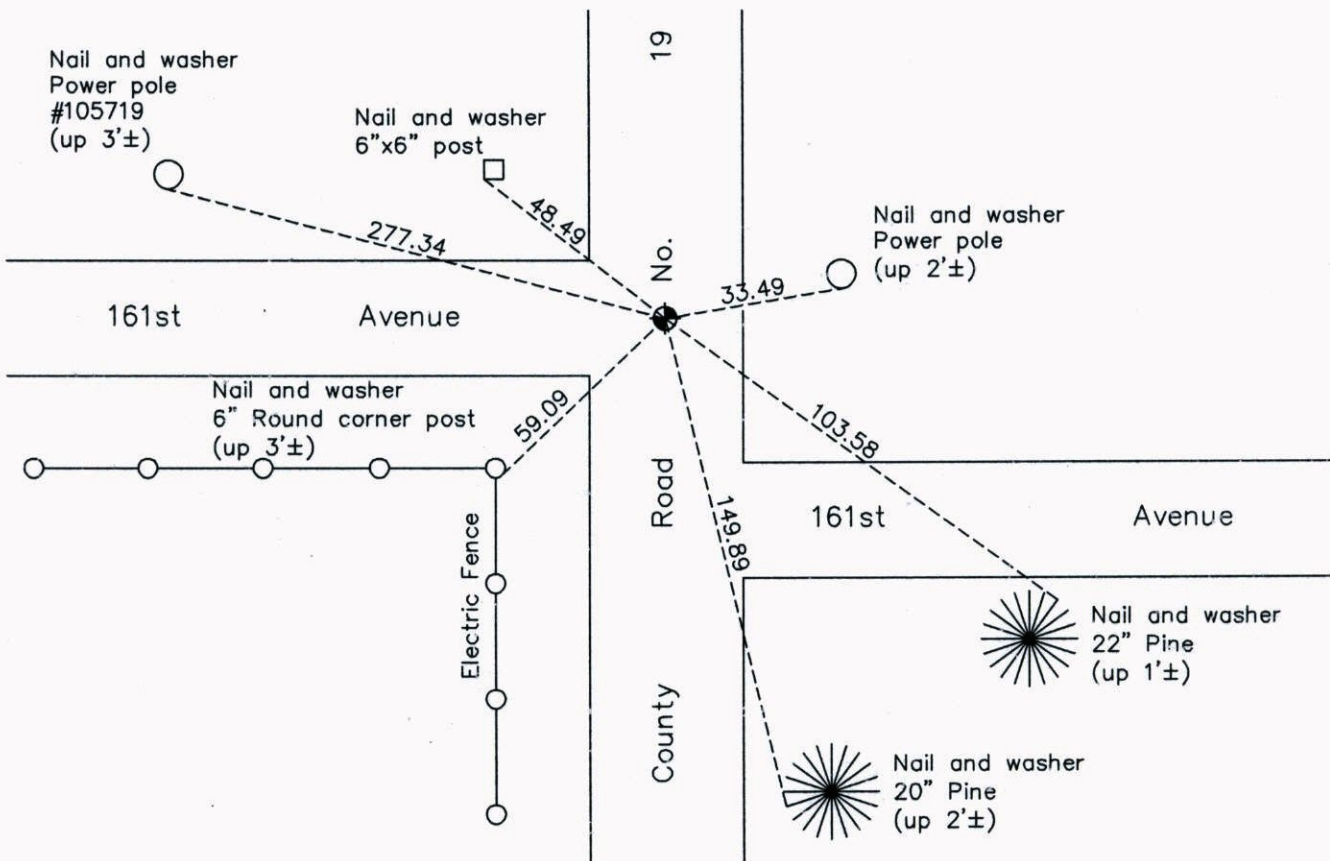
West 1/4 Corner of Sec. 15 Township 32 Range 22

On the 13th day of May, 1963, the described corner was evidenced by a railroad spike

and to perpetuate the location of said corner, at the exact location thereof, a permanent marker was placed consisting of a cast iron monument

AND on the 19th day of September, 2012, said permanent marker was found down 0.5' and broken. Replaced with a cast iron monument and the ties were updated.

Updated reference ties are as shown below.



Revision Date

12/17/13

N.A.D. 1983 Coordinates
(1996 Adjustment)

County Project Coordinates	
Northing	182601.5735
Easting	547922.5649
Date	6/16/03

I hereby certify that this United States public land survey monument record is correct and complete to the best of my knowledge and belief.

Larry D. Hoium Date 12/17/13

Larry D. Hoium, Anoka County Surveyor
Minnesota License Number 18165

CERTIFICATE OF LOCATION OF GOVERNMENT CORNER

County of Anoka

State of Minnesota

West 1/4 Corner of Sec. 15 Township 32 Range 22

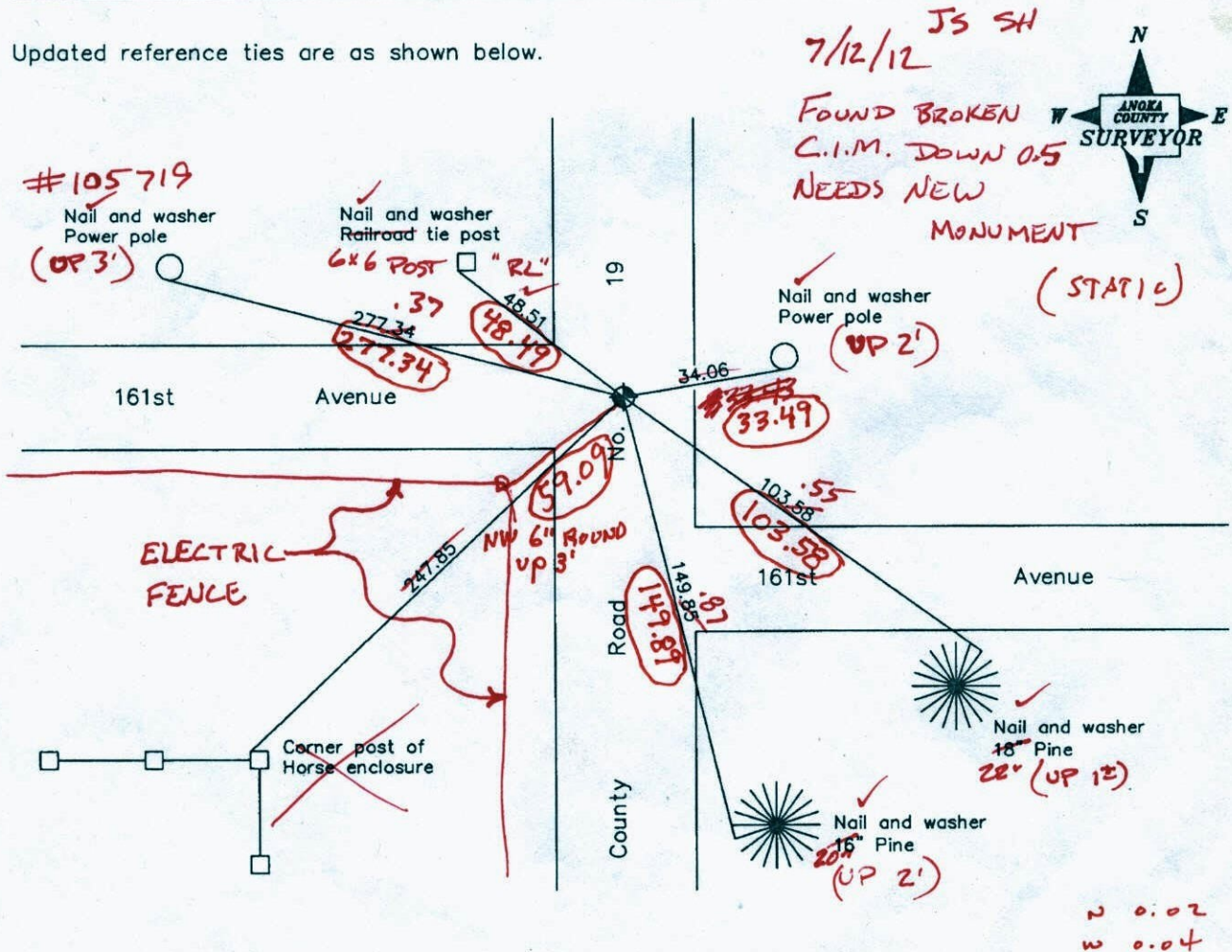
On the 13th day of May, 1963, the described corner was evidenced by a railroad spike

and to perpetuate the location of said corner, at the exact location thereof, a permanent marker was placed consisting of a cast iron monument

9-19-12 JS SH
SET CIM & RETIED CIRCLED TIES ARE FINAL

AND on the 13th day of November, 2007, said permanent marker was found and the ties were updated

Updated reference ties are as shown below.



Revised date
8/14/95
8/26/97
11/13/07

N.A.D. 1983 Coordinates (1996 Adjustment)	
County Project Coordinates	
Northing	182601.5735
Easting	547922.5649
Date	6/16/03

I hereby certify that this United States public land survey monument record is correct and complete to the best of my knowledge and belief.

Larry D. Hoium Date 11/13/07
 Larry D. Hoium, Anoka County Surveyor
 Minnesota License Number 18165

CERTIFICATE OF LOCATION OF GOVERNMENT CORNER

County of Anoka

State of Minnesota

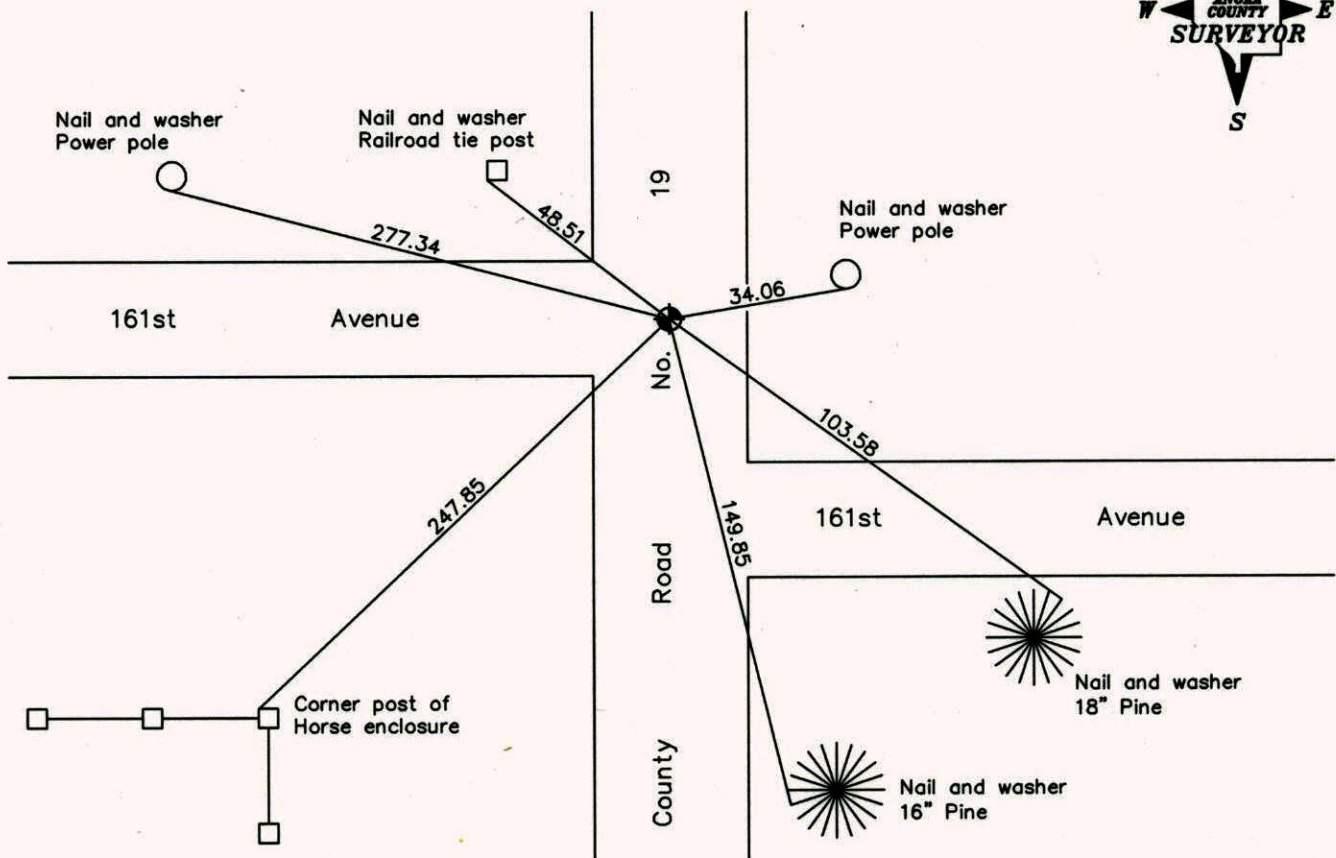
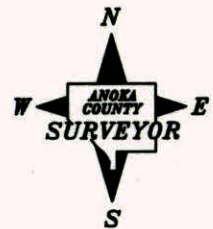
West 1/4 Corner of Sec. 15 Township 32 Range 22

On the 13th day of May, 1963, the described corner was evidenced by a railroad spike

and to perpetuate the location of said corner, at the exact location thereof, a permanent marker was placed consisting of a cast iron monument

AND on the 13th day of November, 2007, said permanent marker was found and the ties were updated

Updated reference ties are as shown below.



Revised date

8/14/95
8/26/97
11/13/07

**N.A.D. 1983 Coordinates
(1996 Adjustment)**

County Project Coordinates
Northing <u>182601.5735</u>
Easting <u>547922.5649</u>
Date <u>6/16/03</u>

I hereby certify that this United States public land survey monument record is correct and complete to the best of my knowledge and belief.

Larry D. Hoium Date 11/13/07

Larry D. Hoium, Anoka County Surveyor

Minnesota License Number 18165

CERTIFICATE OF LOCATION OF GOVERNMENT CORNER

County of Anoka

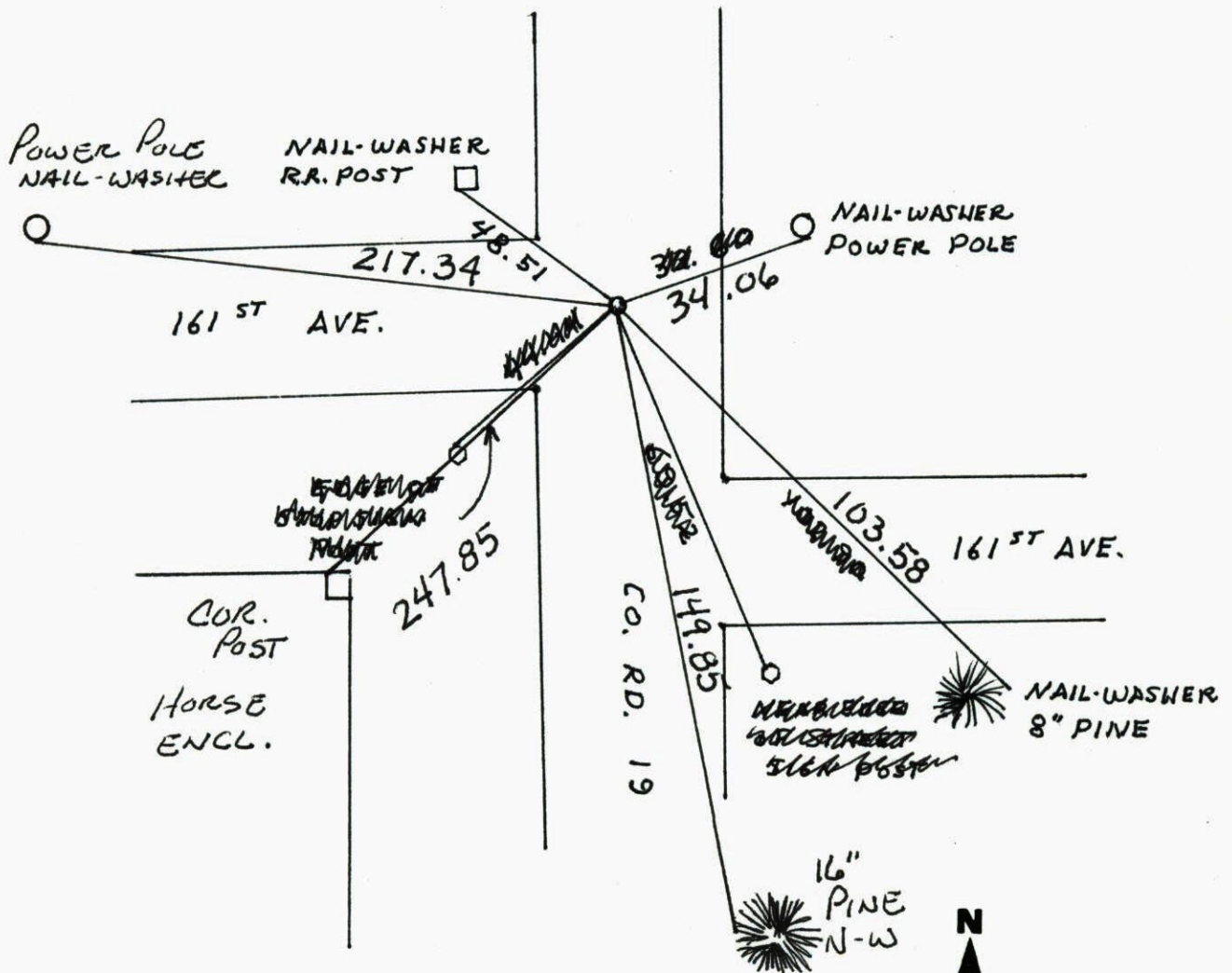
State of Minnesota

WEST 1/4 Corner of Sec. 15 Township 32 Range 22

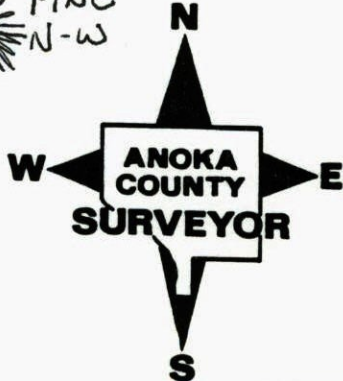
I hereby certify that on the 13 day of MAY, 19 63, I found the described corner which was evidenced by R. R. SPIKE

and I further certify that to perpetuate the location of said corner, I did, at the exact location thereof, place a permanent marker consisting of CAST IRON MONUMENT

which reference or witness monuments are located in the manner following:



Revised date	Revised date	Revised date
8-10-89		
8-14-95		
REPLACED		
8-26-97		
11-13-07		



CERTIFICATE OF LOCATION OF GOVERNMENT CORNER

County of Anoka

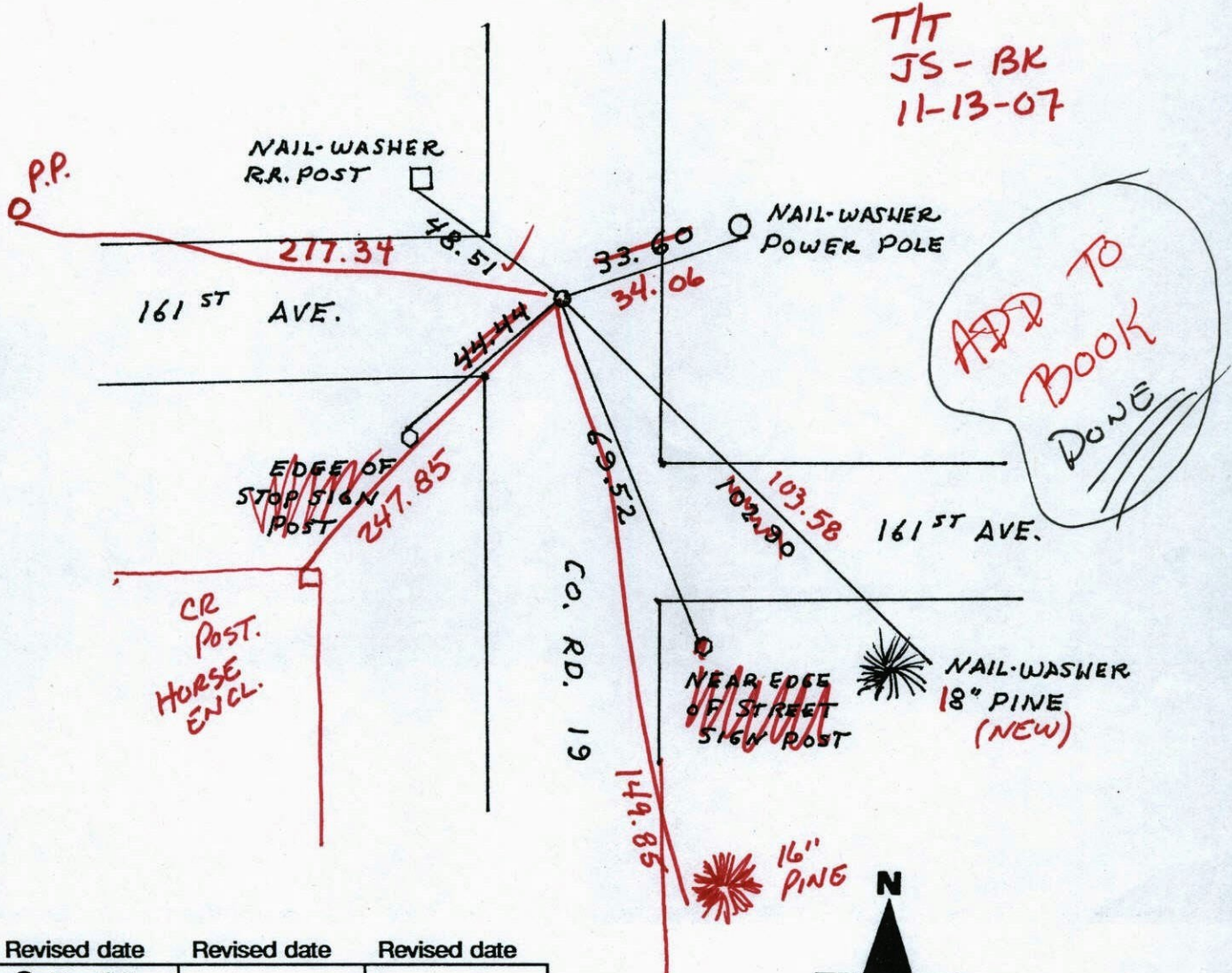
State of Minnesota

WEST 1/4 Corner of Sec. 15 Township 32 Range 22

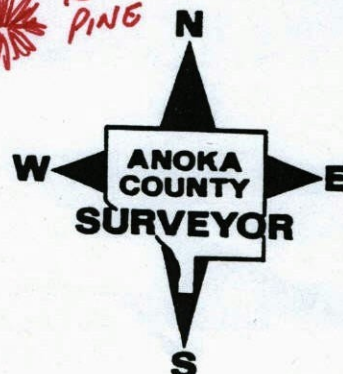
I hereby certify that on the 13 day of MAY, 1963, I found the described corner which was evidenced by R. R. SPIKE

and I further certify that to perpetuate the location of said corner, I did, at the exact location thereof, place a permanent marker consisting of CAST IRON MONUMENT

which reference or witness monuments are located in the manner following:



Revised date	Revised date	Revised date
8-10-89		
8-14-95		
REPLACED		
8-26-97		



CONSTRUCTION TIES

W 1/4 SEC 15 T 32 R 22

6-13-97
B. KLEMEZ
J. SIMMER161ST AVE

CO RD 19

PK IN PP.

PK IN PP.

276.72

16.35

414.80

15.45

161ST AVE 180°

NO. 448

NATIONAL PRINTFAST

West 1/4 Corner Sec. 15 T32 R22

Retired Cast Iron Monument

Nail & Washer
Post161ST AVENail & Washer
Power Pole

41.23

40.53

30.04

33.69

"V" Notch end of
metal culvertNail & Washer
Ridgewood Sign
Post

67.14

14.11

103.00

161ST AVENew
Nail & Washer
6" Pipe

County Road # 19

N

8-10-89
M. Zimmerman
A. Shroyer

NO. 448

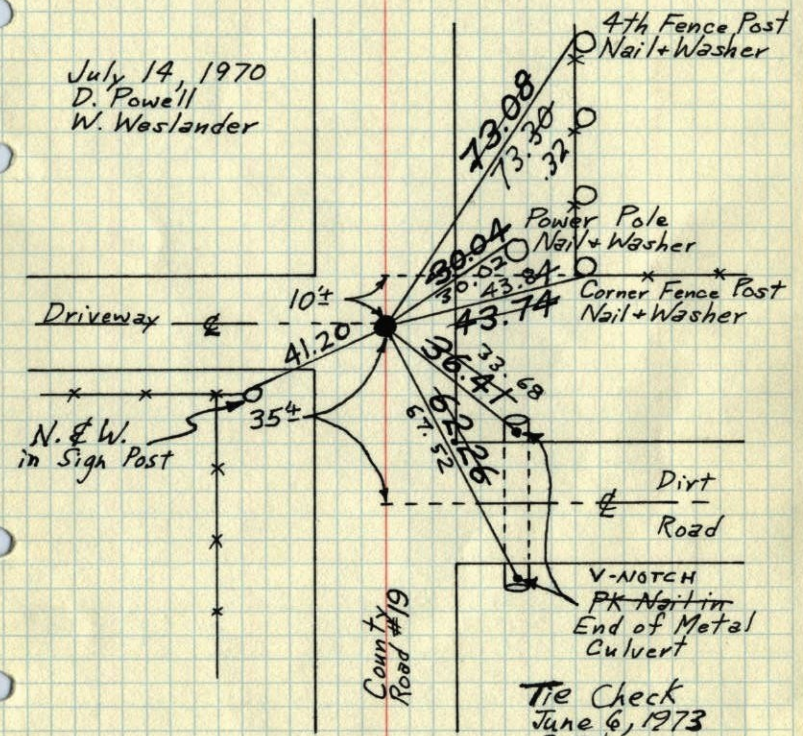
NATIONAL PRINTFAST

Cl

60

W¹/₄ Cor. Sec. 15-T32-R22

Reset Cast Iron Monument flush from ties and Reg. Land Survey #2. 1'± West of E.
PK Nails 2.00' North + East.



July 14, 1970
D. Powell
W. Weslander

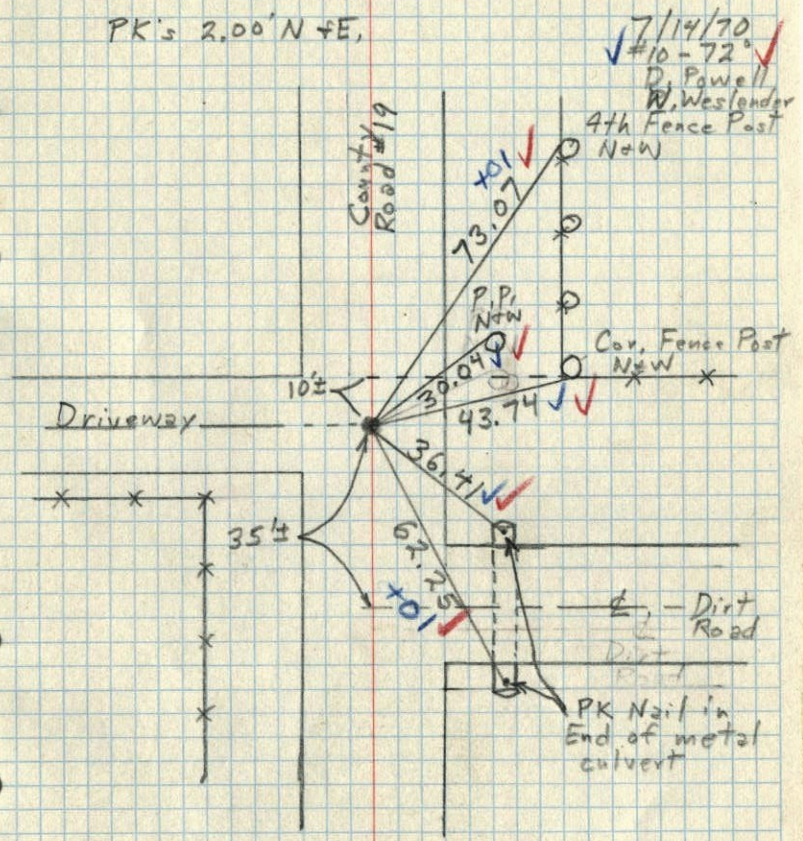
TIE CHECK
8-1-79
B. STEPHENS
D. STEPHENS
P. ROSS

TIE CHECK
8-5-76
G. ADAMS
S. BRIEN
J. STEPHENS

TEMPERATURE CORRECTED ROLAND W. ANDERSON
AND HORIZONTALLY COUNTY SURVEYOR
TAPED MEASUREMENTS ANOKA COUNTY, MINNESOTA

W¹/₄ Cor. Sec. 15-T32-R22

Reset C.I. Mon. flash from ties and RLS #2. 1'± West of E.
PK's 2.00' N + E,



7/14/70
#10-72
D. Powell
W. Weslander

TEMPERATURE CORRECTED ROLAND W. ANDERSON
AND HORIZONTALLY COUNTY SURVEYOR
TAPED MEASUREMENTS ANOKA COUNTY, MINNESOTA

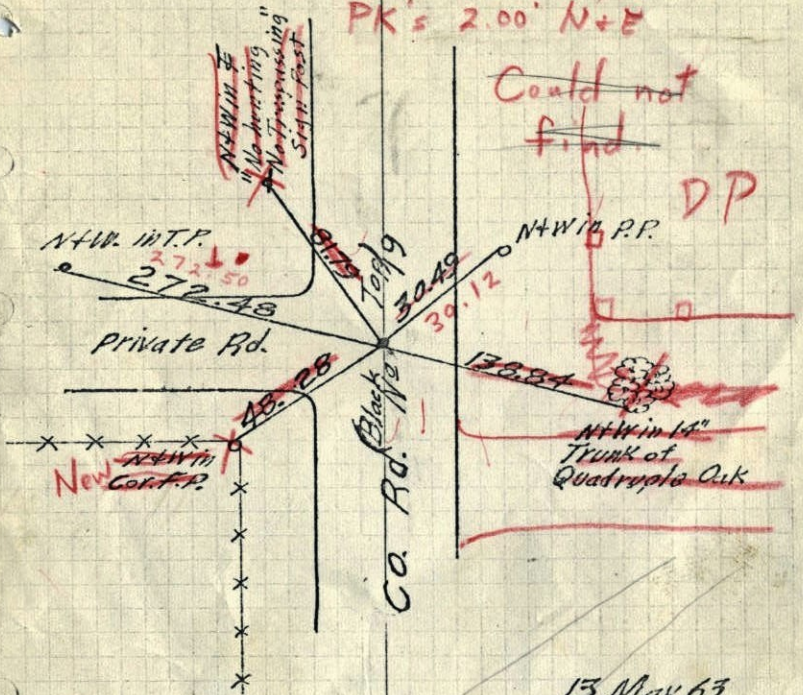
X

W 1/4 Cor. Sec. 15, T. 32, R. 22.
Found R.R. Spk. Flush-Set during Survey
of So 1/2 of NW 1/4 Sec. 15 by D.C. Hult

PK's 2.00' N+E

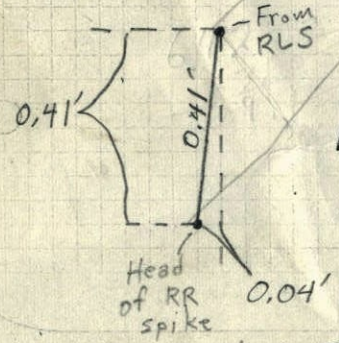
Could not find

DP



15 May 63
J. Oliver
M.D. Anderson
B. Carlson

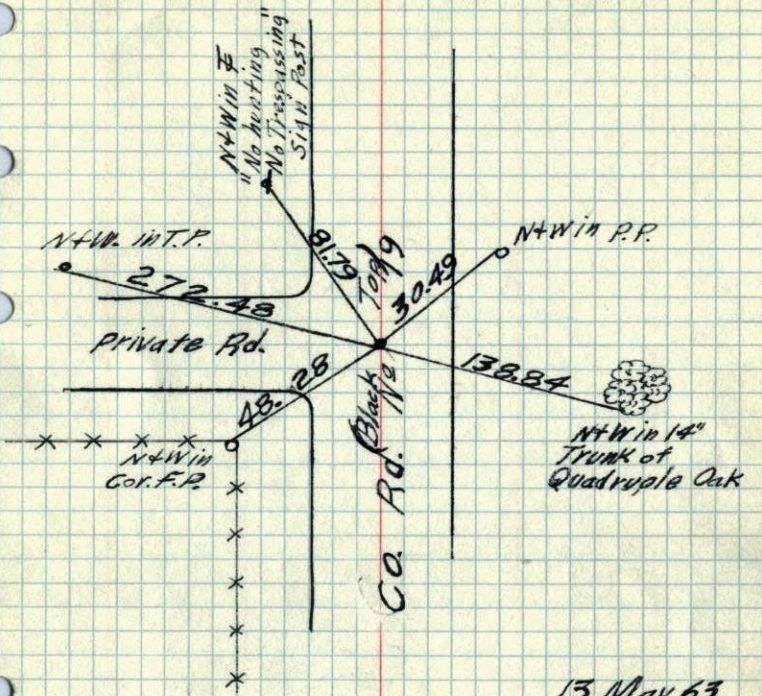
TEMPERATURE CORRECTED
AND HORIZONTALLY
TAPED MEASUREMENTS



ROLAND W. ANDERSON
COUNTY SURVEYOR
ANOKA COUNTY, MINNESOTA

Head of RR spike 0.04'
leaning North 55°
Down 0.5'± in dirt above old blk. top

W 1/4 Cor. Sec. 15, T. 32, R. 22.
Found R.R. Spk. Flush-Set during Survey
of So 1/2 of NW 1/4 Sec. 15 by D.C. Hult



15 May 63
J. Oliver
M.D. Anderson
B. Carlson

TEMPERATURE CORRECTED
AND HORIZONTALLY
TAPED MEASUREMENTS

ROLAND W. ANDERSON
COUNTY SURVEYOR
ANOKA COUNTY, MINNESOTA

