

CERTIFICATE OF LOCATION OF GOVERNMENT CORNER

County of Anoka

State of Minnesota

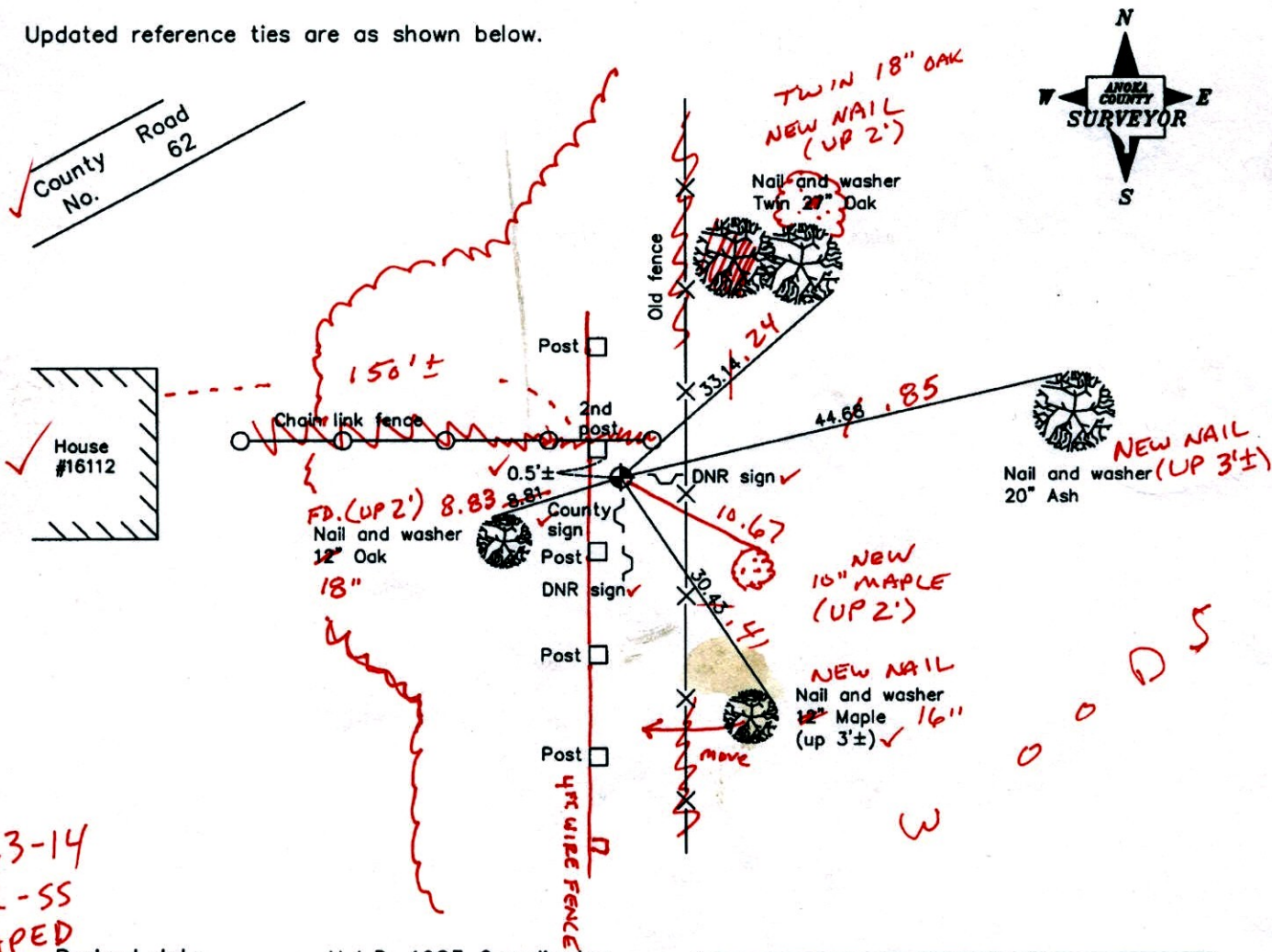
West 1/4 Corner of Sec. 14 Township 32 Range 22

On the 20th day of July, 1964, the described corner was evidenced by area resurvey

and to perpetuate the location of said corner, at the exact location thereof, a permanent marker was placed consisting of a cast iron monument with a sign and post on the south side

AND on the 21st day of April, 2008, said permanent marker was found and the ties were updated

Updated reference ties are as shown below.



9-23-14
BK-SS
TAPED

Revised date
6/12/90
8/17/95
4/21/08

N.A.D. 1983 Coordinates (1996 Adjustment)	
County Project Coordinates	
Northing	182543.6826
Easting	553212.1376
Date	4/25/05

I hereby certify that this United States public land survey monument record is correct and complete to the best of my knowledge and belief.

Larry D. Hoium Date 4/21/08

Larry D. Hoium, Anoka County Surveyor

Minnesota License Number 18165

CERTIFICATE OF LOCATION OF GOVERNMENT CORNER

County of Anoka

State of Minnesota

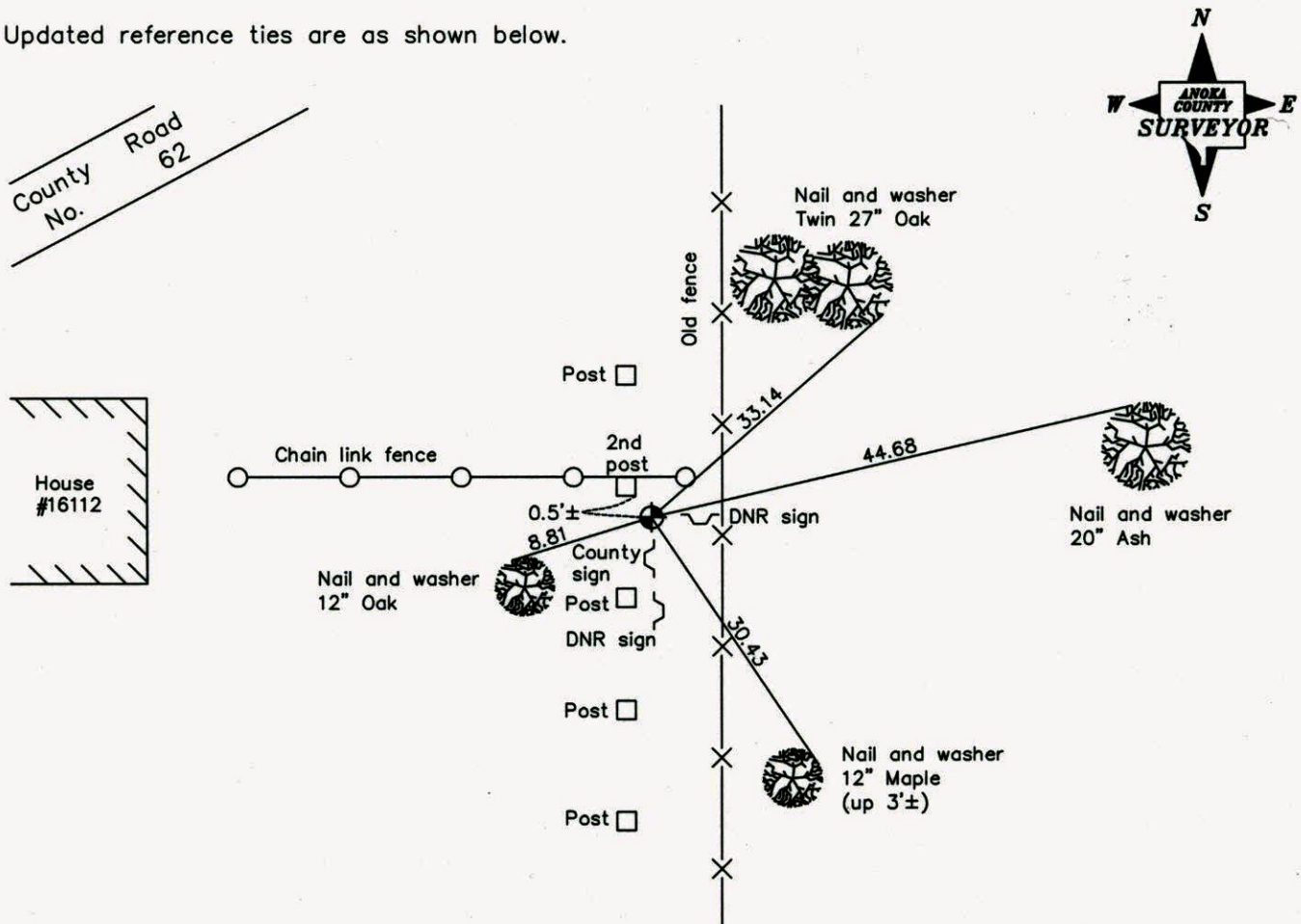
West 1/4 Corner of Sec. 14 Township 32 Range 22

On the 20th day of July, 1964, the described corner was evidenced by area resurvey

and to perpetuate the location of said corner, at the exact location thereof, a permanent marker was placed consisting of a cast iron monument with a sign and post on the south side

AND on the 21st day of April, 2008, said permanent marker was found and the ties were updated

Updated reference ties are as shown below.



Revised date
6/12/90
8/17/95
4/21/08

N.A.D. 1983 Coordinates (1996 Adjustment)	
County Project Coordinates	
Northing	<u>182543.6826</u>
Easting	<u>553212.1376</u>
Date	<u>4/25/05</u>

I hereby certify that this United States public land survey monument record is correct and complete to the best of my knowledge and belief.

Larry D. Hoium Date 4/21/08

Larry D. Hoium, Anoka County Surveyor

Minnesota License Number 18165

CERTIFICATE OF LOCATION OF GOVERNMENT CORNER

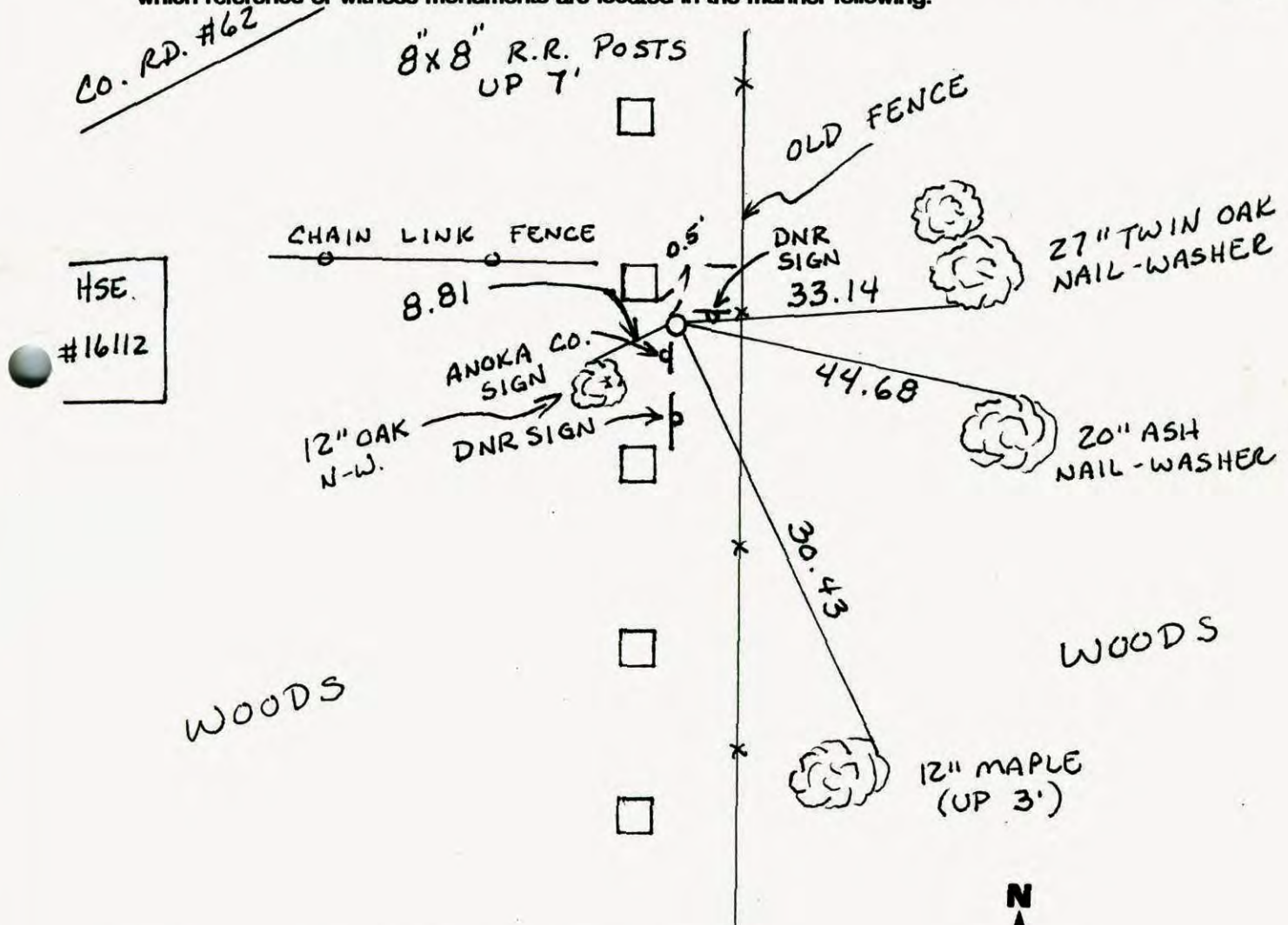
County of Anoka

State of Minnesota

WEST 1/4 Corner of Sec. 14 Township 32 Range 22

I hereby certify that on the 20 day of JULY, 1964, I found the described corner which was evidenced by AREA RESURVEY

and I further certify that to perpetuate the location of said corner, I did, at the exact location thereof, place a permanent marker consisting of CAST IRON MONY. WITH SIGN AND POST ON THE SOUTH SIDE (DNR AND SIGN S NORTH EAST @ RIGHT ANGLE) which reference or witness monuments are located in the manner following:



Revised date	Revised date	Revised date
7-20-64	4-21-08	
8-8-76		
8-1-79		
7-22-82		
8-6-85		
6-12-90		
8-17-95		



CERTIFICATE OF LOCATION OF GOVERNMENT CORNER

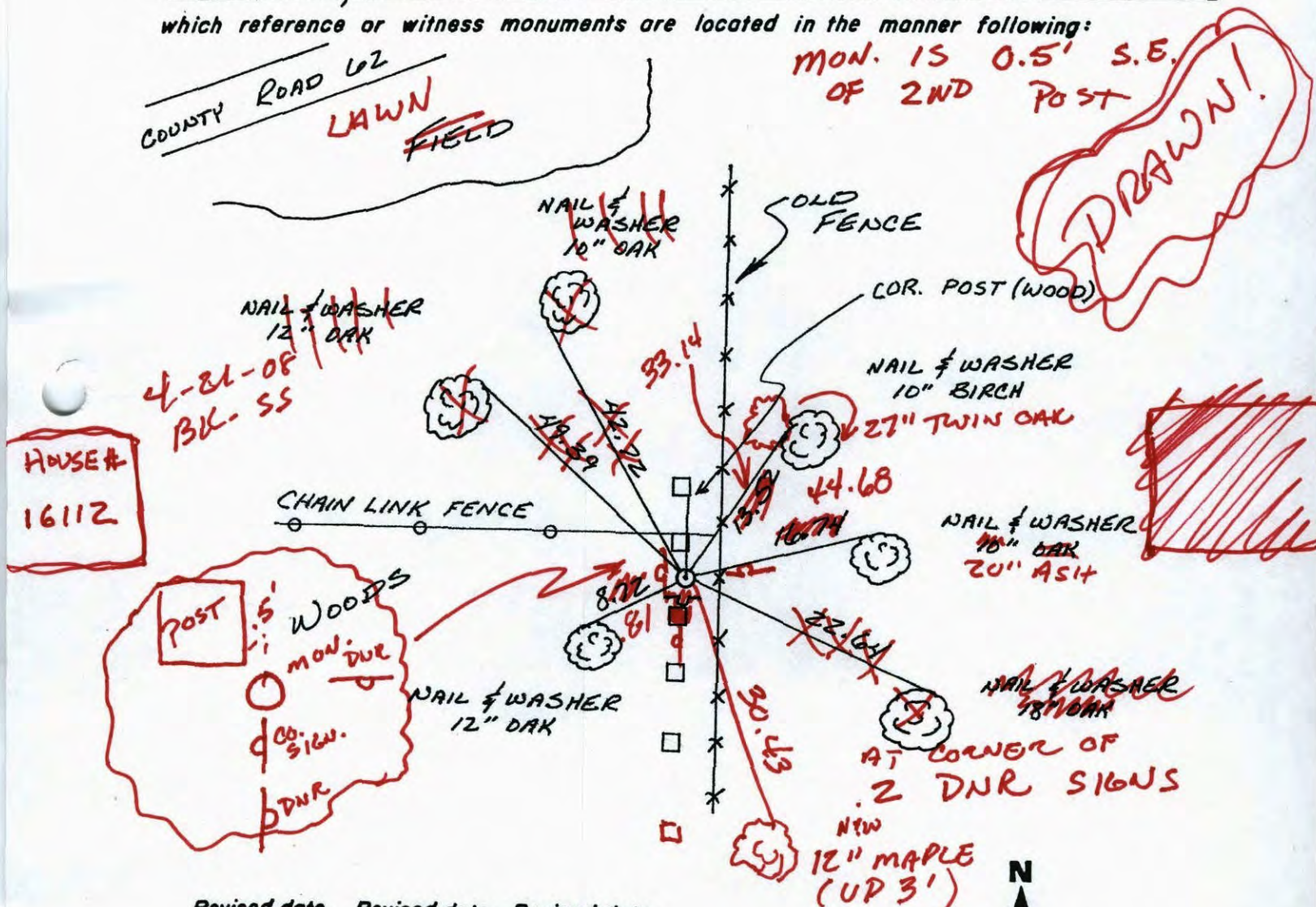
County of Anoka

State of Minnesota

WEST 1/4 Corner of Sec. 14 Township 32 Range 22

I hereby certify that on the 20 day of JULY, 1964, I found the described corner which was evidenced by AREA RESURVEY

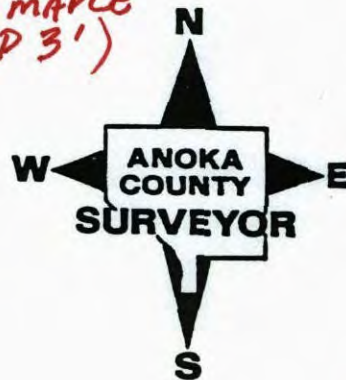
and I further certify that to perpetuate the location of said corner, I did, at the exact location thereof, place a permanent marker consisting of CAST IRON MONUMENT WITH SIGN AND POST ON THE SOUTH SIDE which reference or witness monuments are located in the manner following:



HOUSE #
16112

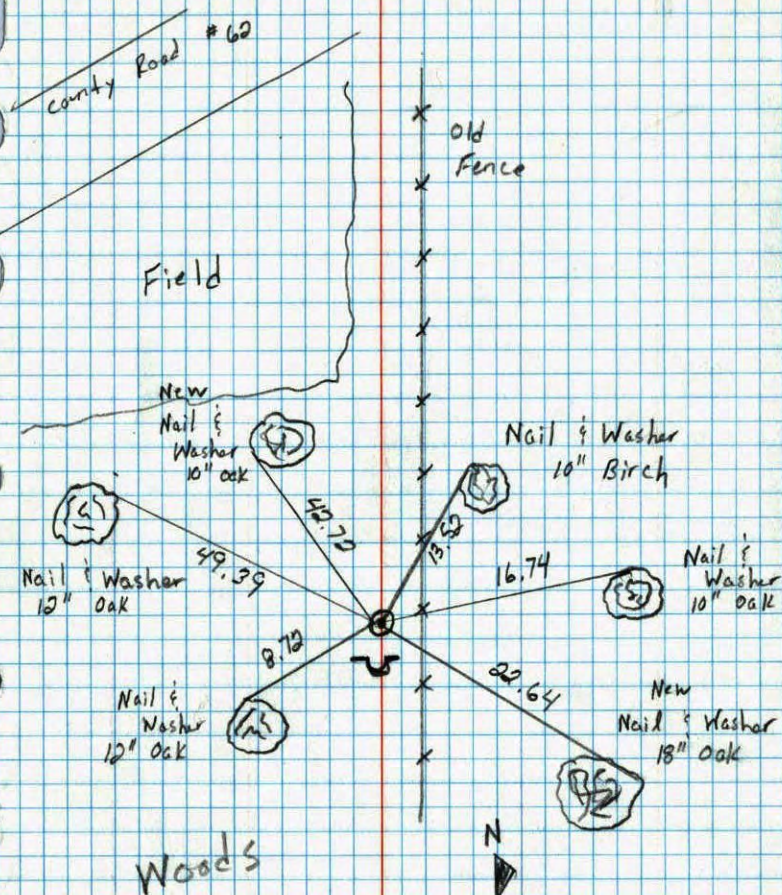
DRAWN!

Revised date	Revised date	Revised date
7-20-64		
8-8-76		
8-1-79		
7-22-82		
8-6-85		
6-12-90		
8-17-95		



West 1/4 Corner Sec. 14 T32 R22

Retied Cast Iron Monument



6-12-90
M. Zimmerman
D. Klercy

W 1/4 CORNER SECTION 14 - T32 - R22

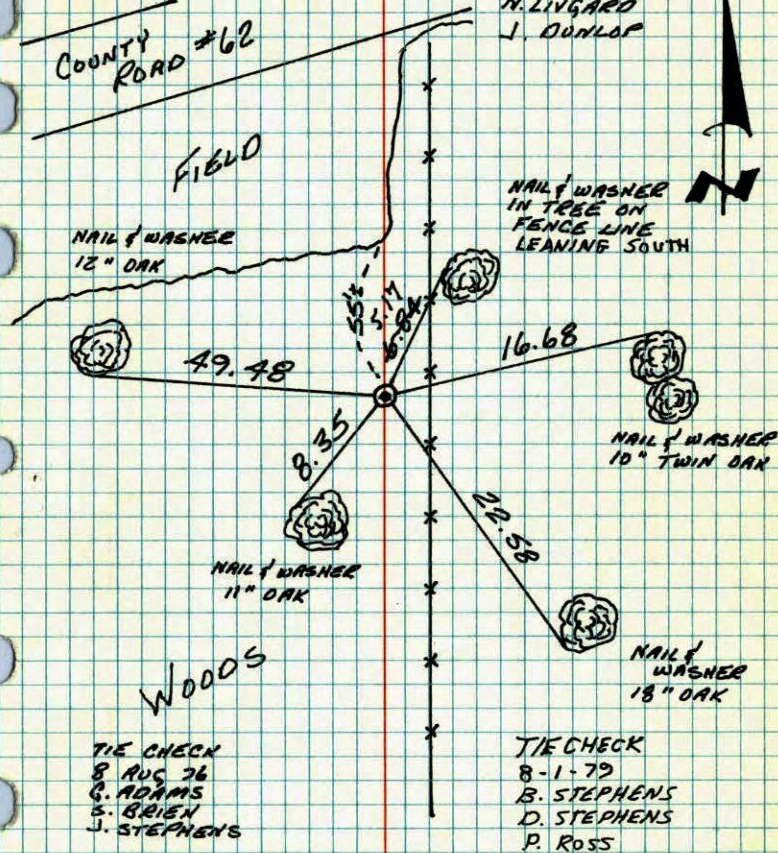
SET CAST IRON MONUMENT FROM AREA RESURVEY.
CAST IRON UP 0.1' AND 3'
WEST OF FENCE LINE

20 JUL 64

J. OLIVER

H. LINGARD

J. DUNLOP

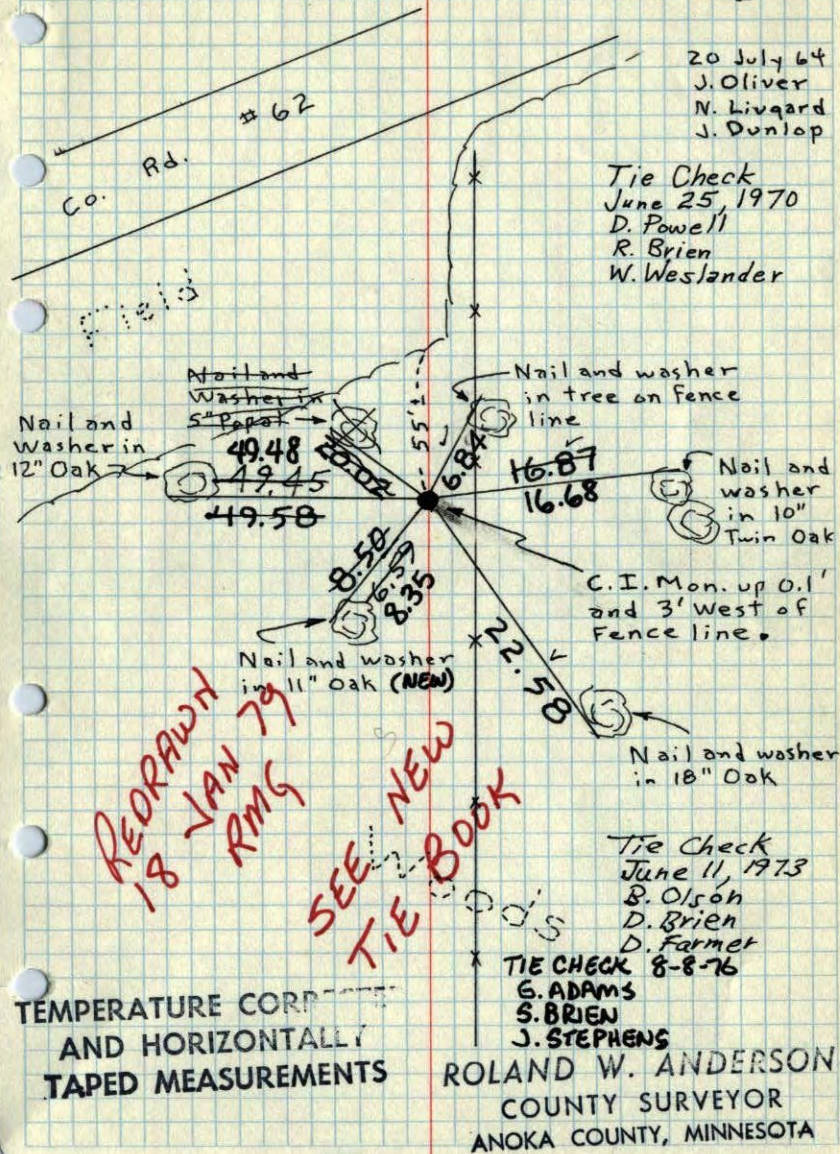


TEMPERATURE CORRECTED
AND HORIZONTALLY
TAPED MEASUREMENTS

ROLAND W. ANDERSON
COUNTY SURVEYOR
ANOKA COUNTY, MINNESOTA

W 1/4 Cor. Sec. 14, T32, R22

Set Cast Iron Monument From Resurvey.



REDRAWN
18 JAN 79
RMS

SEE NEW
TIE BOOK

W 1/4 Cor. Sec. 14, T32, R22

Set Cast Iron Monument From Resurvey.

