

CERTIFICATE OF LOCATION OF GOVERNMENT CORNER

County of Anoka

State of Minnesota

Northeast Corner of Sec. 23 Township 32 Range 22

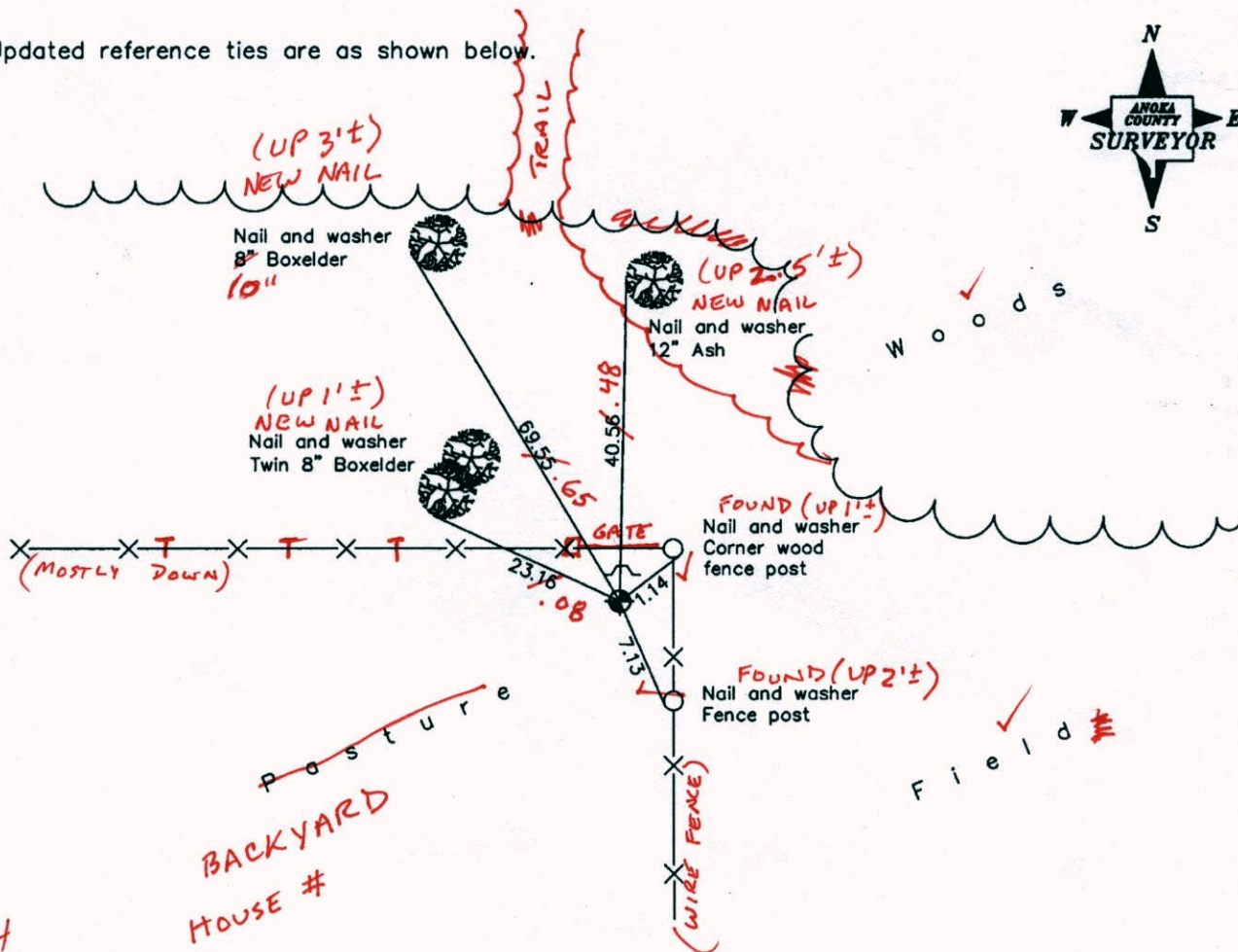
On the 20th day of June, 1963, the described corner was evidenced by area property surveys

and to perpetuate the location of said corner, at the exact location thereof, a permanent marker was placed consisting of a cast iron monument with a sign and post on the north side

(Mon. Down 0.4'±)

AND on the 7th day of April, 2008, said permanent marker was found and the ties were updated

Updated reference ties are as shown below.



*10-14-14
BK-SS
TAPED*

Revised date

| |
|---------|
| 7/16/90 |
| 8/21/95 |
| 4/07/08 |
| |
| |

N.A.D. 1983 Coordinates
(1996 Adjustment)

| | |
|----------------------------|-------------|
| County Project Coordinates | |
| Northing | 179865.7704 |
| Easting | 558482.7084 |
| Date | 5/18/04 |

I hereby certify that this United States public land survey monument record is correct and complete to the best of my knowledge and belief.

Larry D. Hoium Date 4/07/08
 _____, Anoka County Surveyor
 Minnesota License Number 18165

CERTIFICATE OF LOCATION OF GOVERNMENT CORNER

County of Anoka

State of Minnesota

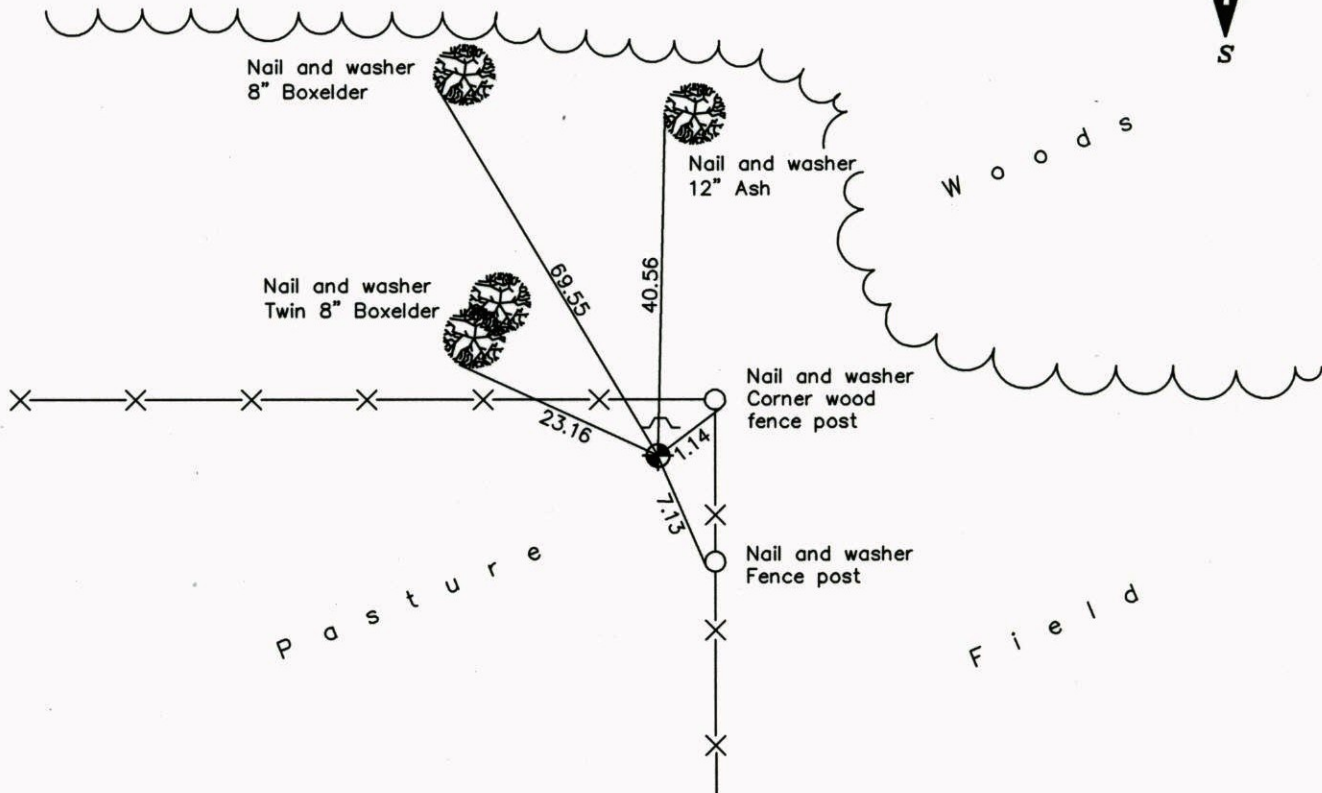
Northeast Corner of Sec. 23 Township 32 Range 22

On the 20th day of June, 1963, the described corner was evidenced by area property surveys

and to perpetuate the location of said corner, at the exact location thereof, a permanent marker was placed consisting of a cast iron monument with a sign and post on the north side

AND on the 7th day of April, 2008, said permanent marker was found and the ties were updated

Updated reference ties are as shown below.



| Revised date |
|--------------|
| 7/16/90 |
| 8/21/95 |
| 4/07/08 |
| |
| |

| N.A.D. 1983 Coordinates (1996 Adjustment) | |
|--|--------------------|
| County Project Coordinates | |
| Northing | <u>179865.7704</u> |
| Easting | <u>558482.7084</u> |
| Date | <u>5/18/04</u> |

I hereby certify that this United States public land survey monument record is correct and complete to the best of my knowledge and belief.

Larry D. Hoium Date 4/07/08

Larry D. Hoium, Anoka County Surveyor

Minnesota License Number 18165

CERTIFICATE OF LOCATION OF GOVERNMENT CORNER

County of Anoka

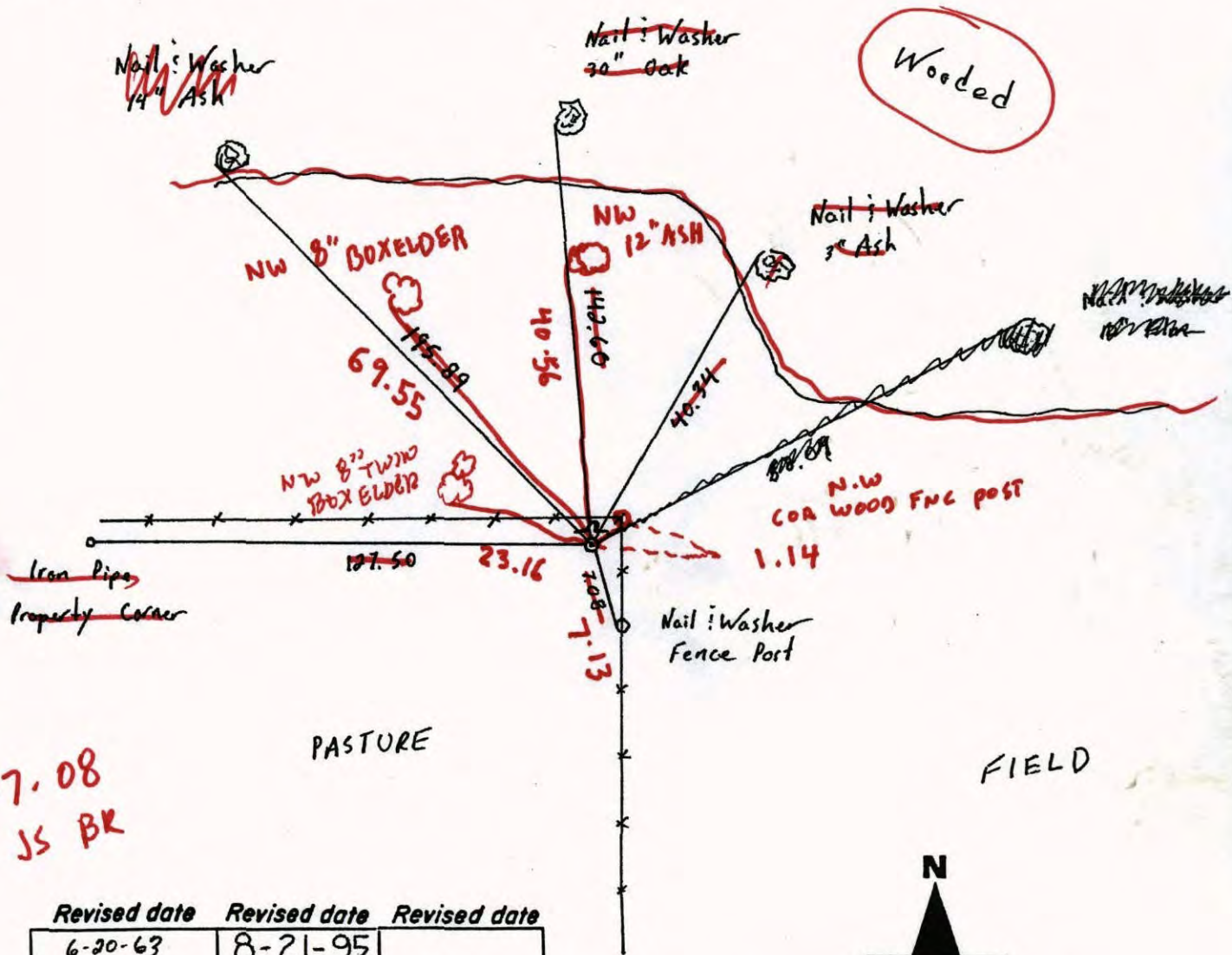
State of Minnesota

Northeast Corner of Sec. 23 Township 32 Range 22

I hereby certify that on the 20th day of June, 1963, I found the described corner which was evidenced by Property Surveys

and I further certify that to perpetuate the location of said corner, I did, at the exact location thereof, place a permanent marker consisting of Cast Iron Monument w. Sign & Post on North side

which reference or witness monuments are located in the manner following:



4-7-08
JS BR

| Revised date | Revised date | Revised date |
|--------------|--------------|--------------|
| 6-20-63 | 8-21-95 | |
| 11-17-64 | | |
| 7-15-70 | | |
| 6-13-73 | | |
| 7-13-82 | | |
| 8-14-85 | | |
| 7-16-90 | | |



CERTIFICATE OF LOCATION OF GOVERNMENT CORNER

County of Anoka

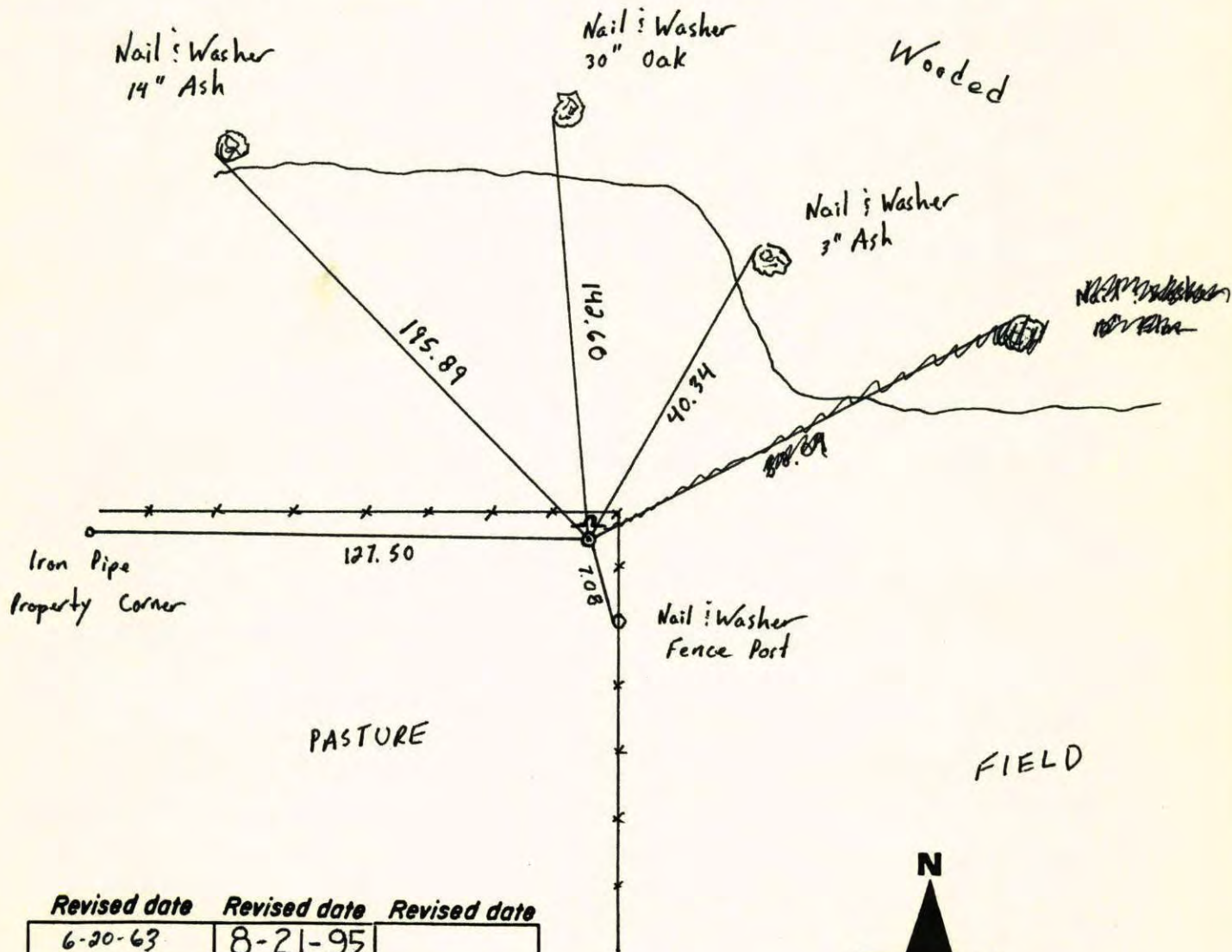
State of Minnesota

Northeast Corner of Sec. 23 Township 32 Range 22

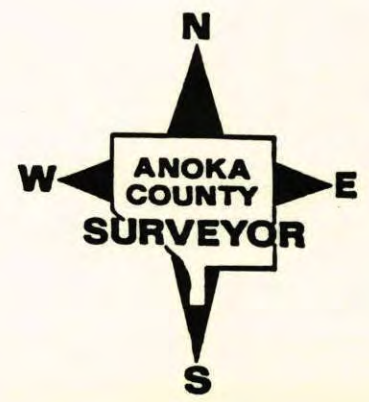
I hereby certify that on the 20th day of June, 1963, I found the described corner which was evidenced by Property Surveys

and I further certify that to perpetuate the location of said corner, I did, at the exact location thereof, place a permanent marker consisting of Cast Iron Monument w. Sign & Post on North side

which reference or witness monuments are located in the manner following:



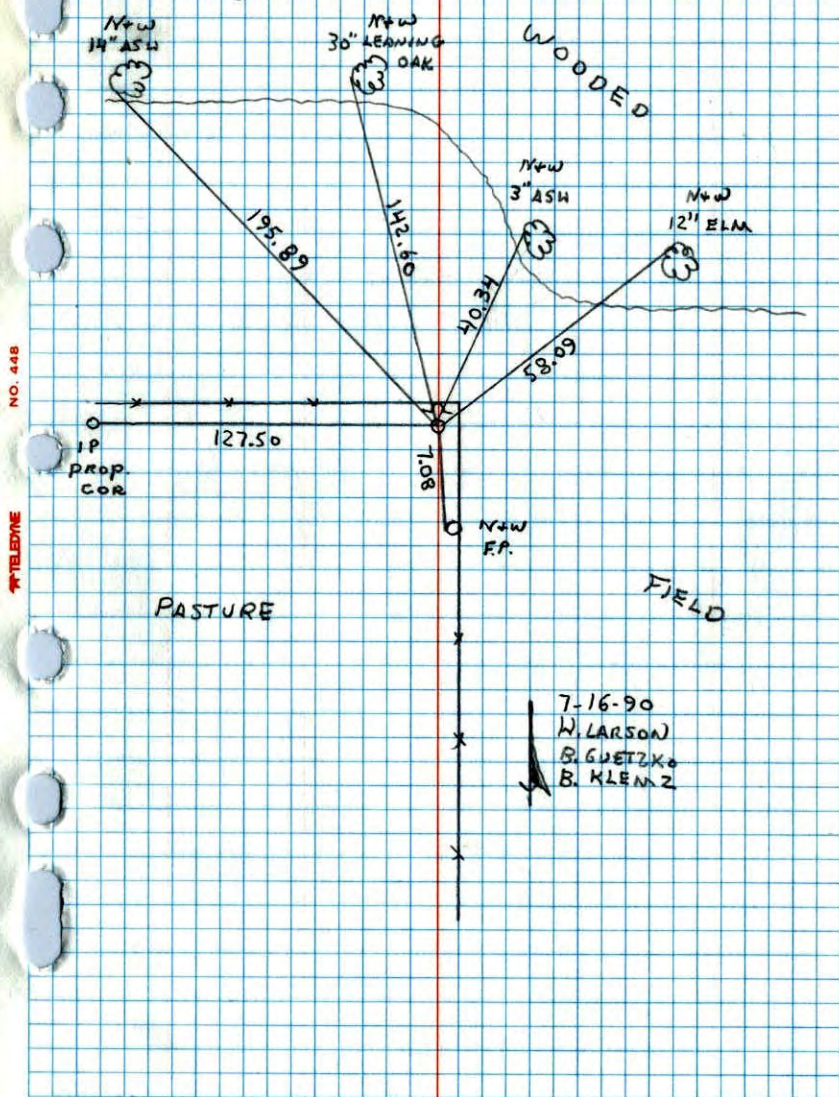
| Revised date | Revised date | Revised date |
|--------------|--------------|--------------|
| 6-20-63 | 8-21-95 | |
| 11-17-64 | | |
| 7-15-70 | | |
| 6-13-73 | | |
| 7-13-82 | | |
| 8-14-85 | | |
| 7-16-90 | | |



NORTHEAST CORNER SEC. 23 T32 R22

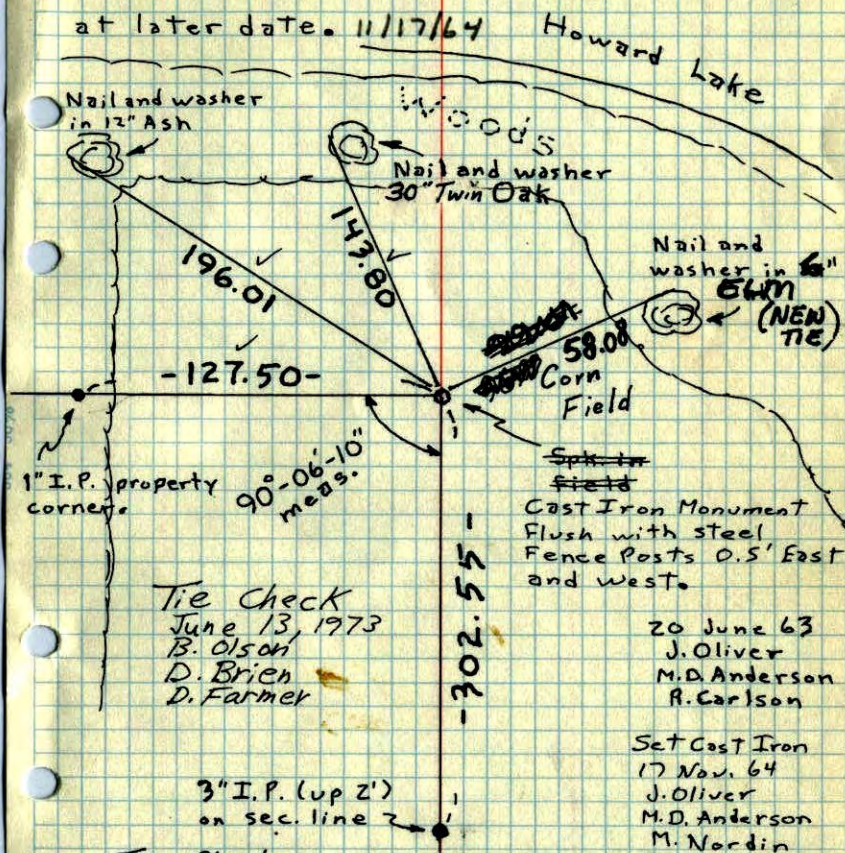
RETIRED C.). PLACED SIGN AND POST ON

NORTH SIDE



NE Cor. Sec. 23, T32, R22

Set Spike from property surveys (See Field notes on file). ~~was~~ set Cast Iron Monument at later date. 11/17/64 Howard Lake

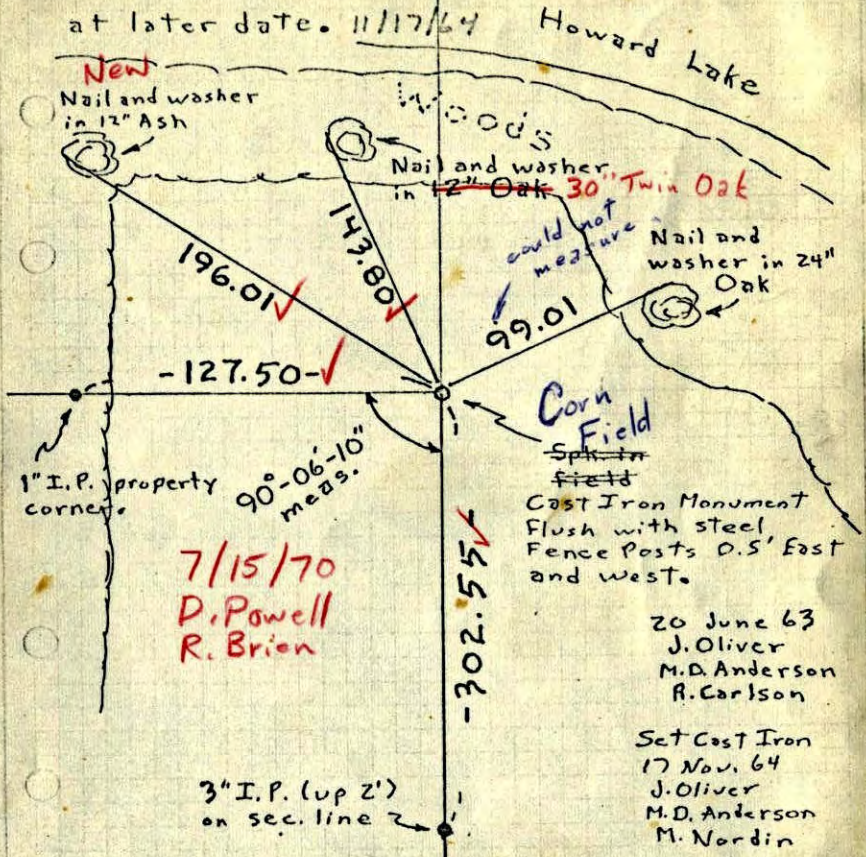


TEMPERATURE CORRECTED
AND HORIZONTALLY
TAPED MEASUREMENTS

ROLAND W. ANDERSON
COUNTY SURVEYOR
ANOKA COUNTY, MINNESOTA

X NE Cor. Sec. 23, T32, R22

Set Spike from property surveys (See field notes on file). ~~Will~~ set Cast Iron Monument at later date. 11/17/64



7/15/70
D. Powell
R. Brion

20 June 63
J. Oliver
M.D. Anderson
R. Carlson

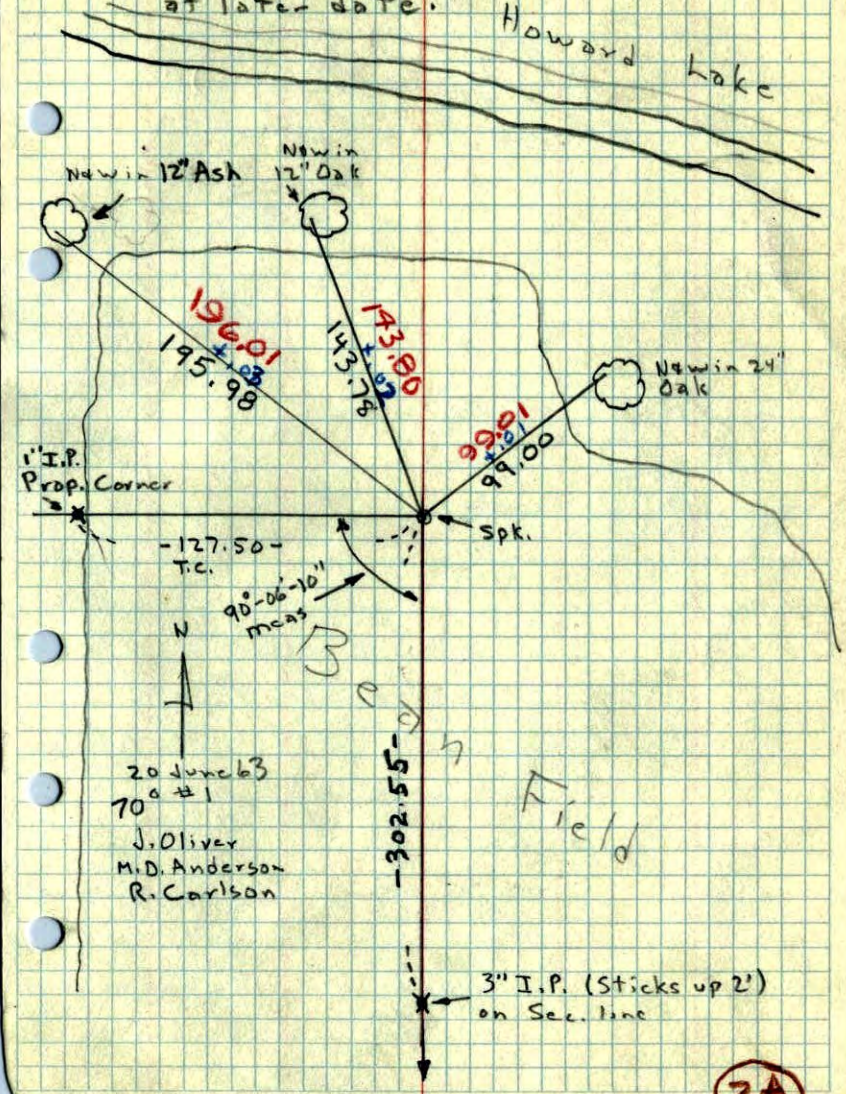
Set Cast Iron
17 Nov. 64
J. Oliver
M.D. Anderson
M. Nordin

TEMPERATURE CORRECTED
AND HORIZONTALLY
TAPED MEASUREMENTS

ROLAND W. ANDERSON
COUNTY SURVEYOR
ANOKA COUNTY, MINNESOTA

NE Cor. Sec. 23, T32, R22

Spk. Set from Property Surveys (See notes on file) will set C.I. Mon. at later date.



20 June 63
70
J. Oliver
M.D. Anderson
R. Carlson

3" I.P. (Sticks up 2")
on Sec. line

2A