

CERTIFICATE OF LOCATION OF GOVERNMENT CORNER

County of Anoka State of Minnesota

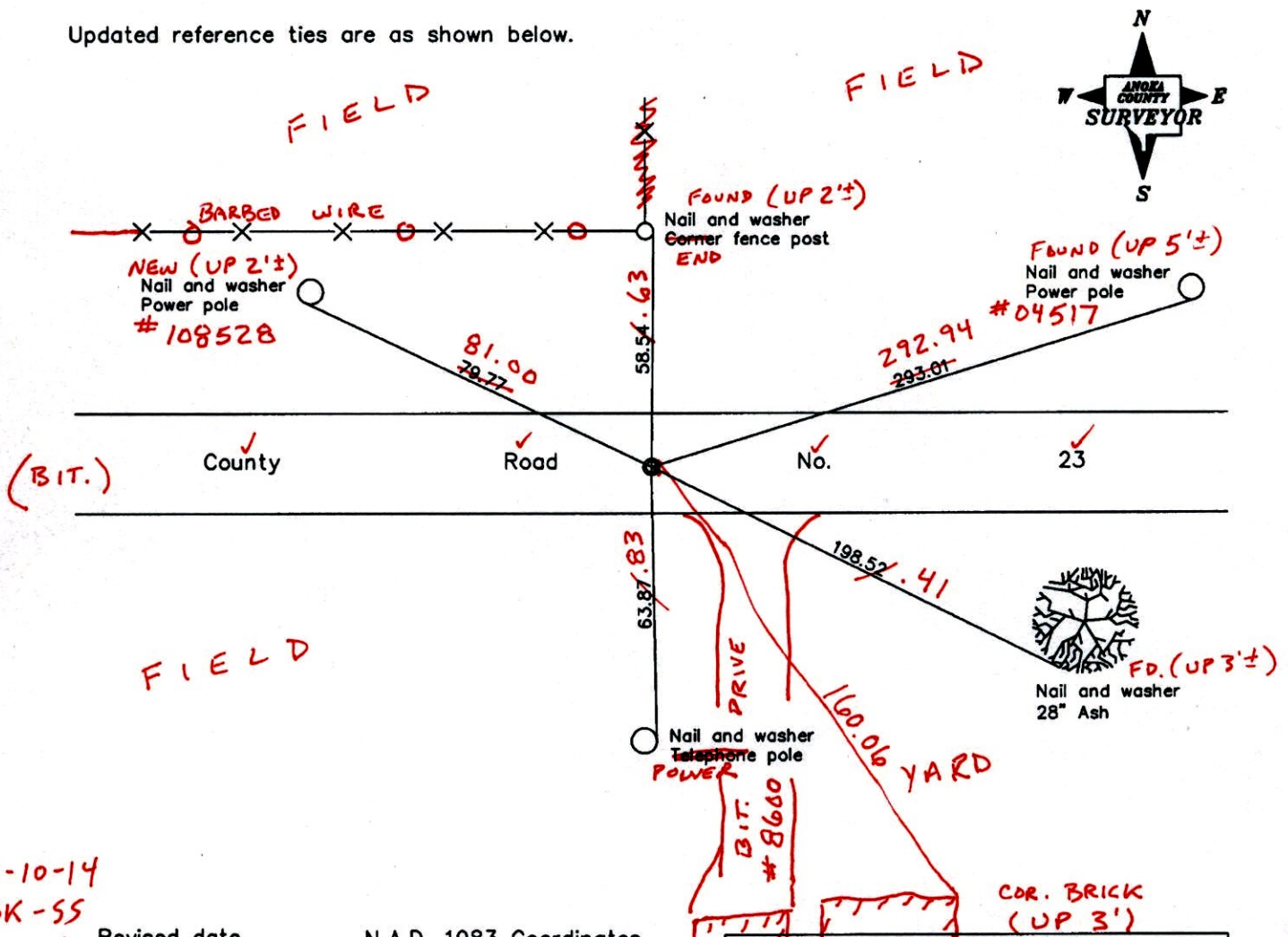
South 1/4 Corner of Sec. 14 Township 32 Range 22

On the 17th day of November, 1964, the described corner was evidenced by area resurvey

and to perpetuate the location of said corner, at the exact location thereof, a permanent marker was placed consisting of a 1/2" iron pipe **FOUND C.I.M. (ON E)**

AND on the 15th day of November, 2007, said permanent marker was found and the ties were updated

Updated reference ties are as shown below.



10-10-14
BK-SS
TOTAL
STA.

Revised date
8/11/95
10/06/98
11/15/07

N.A.D. 1983 Coordinates (1996 Adjustment)	
County Project Coordinates	
Northing	179904.6402
Easting	555859.1022
Date	6/18/03

I hereby certify that this United States public land survey monument record is correct and complete to the best of my knowledge and belief.

Larry D. Hoium Date 11/15/07

Larry D. Hoium, Anoka County Surveyor

Minnesota License Number 18165

CERTIFICATE OF LOCATION OF GOVERNMENT CORNER

County of Anoka

State of Minnesota

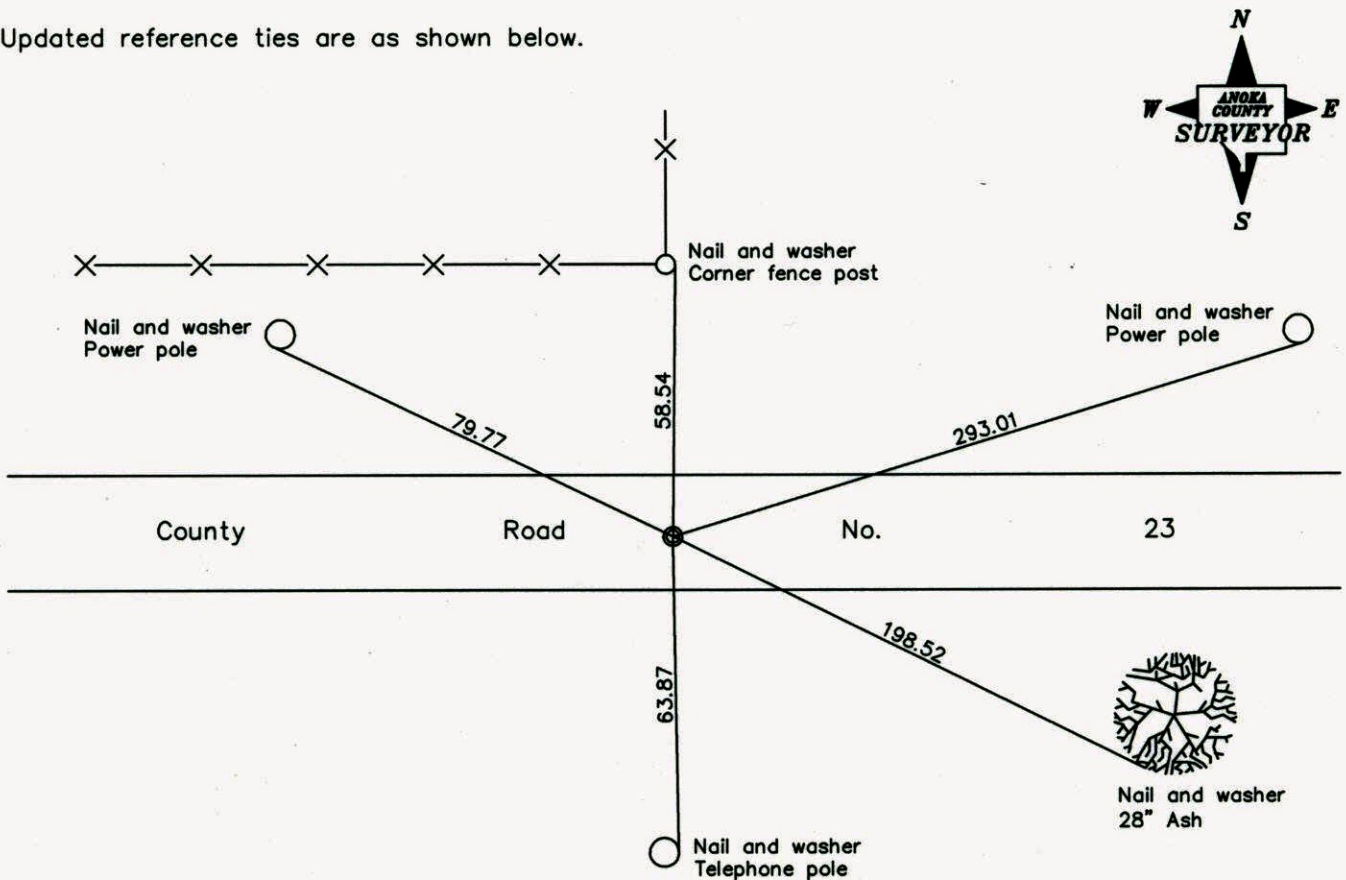
South 1/4 Corner of Sec. 14 Township 32 Range 22

On the 17th day of November, 1964, the described corner was evidenced by area resurvey

and to perpetuate the location of said corner, at the exact location thereof, a permanent marker was placed consisting of a 1/2" iron pipe

AND on the 15th day of November, 2007, said permanent marker was found and the ties were updated

Updated reference ties are as shown below.



Revised date

8/11/95
10/06/98
11/15/07

**N.A.D. 1983 Coordinates
(1996 Adjustment)**

County Project Coordinates	
Northing	<u>179904.6402</u>
Easting	<u>555859.1022</u>
Date	<u>6/18/03</u>

I hereby certify that this United States public land survey monument record is correct and complete to the best of my knowledge and belief.

Larry D. Hoium Date 11/15/07

Larry D. Hoium, Anoka County Surveyor

Minnesota License Number 18165

CERTIFICATE OF LOCATION OF GOVERNMENT CORNER

County of Anoka

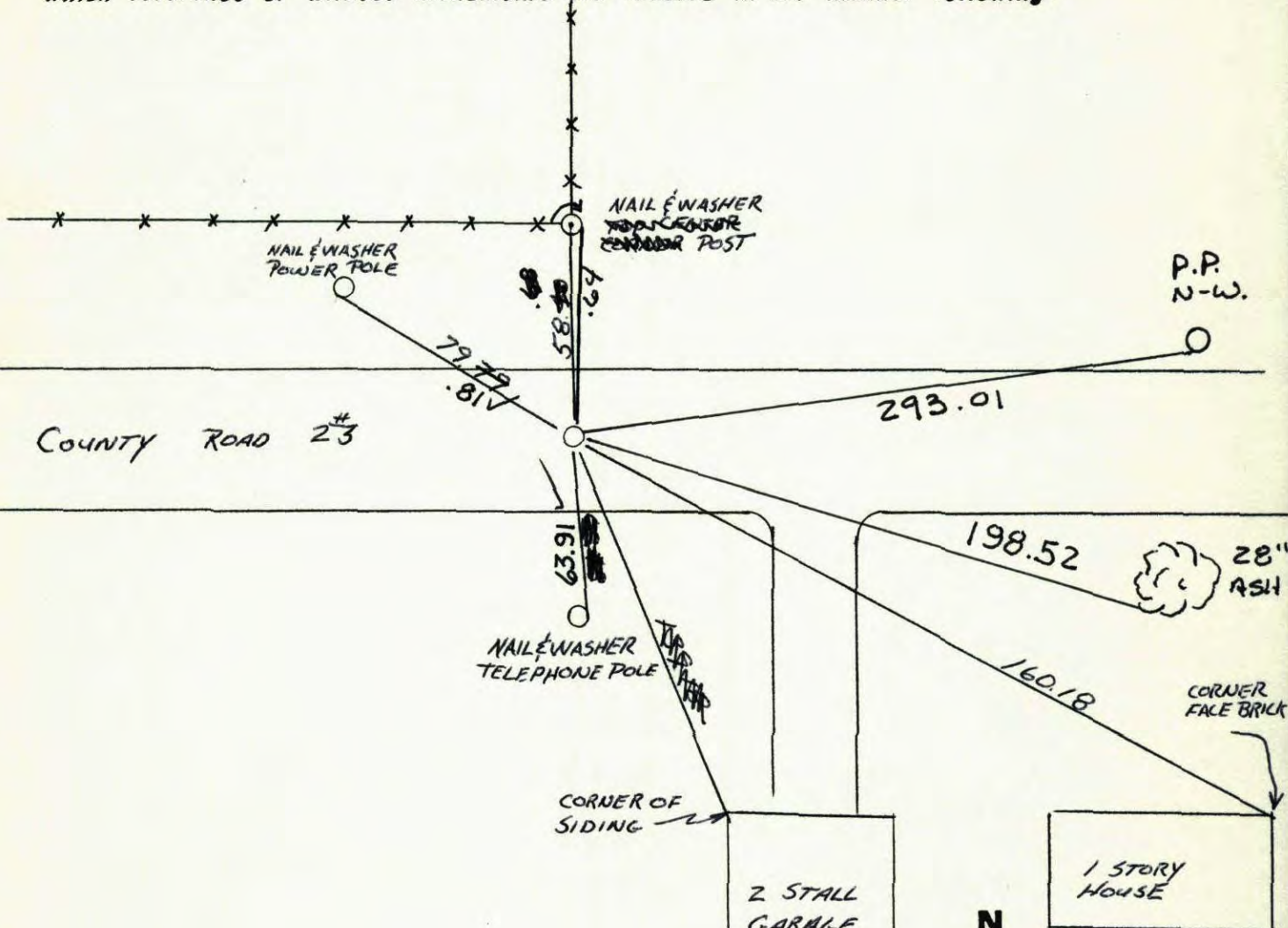
State of Minnesota

SOUTH 1/4 Corner of Sec. 14 Township 32 Range 22

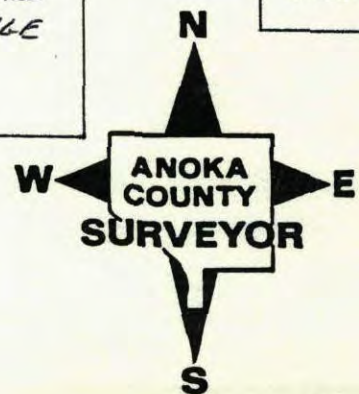
I hereby certify that on the 17TH day of NOVEMBER, 1964, I found the described corner which was evidenced by AREA RESURVEY

and I further certify that to perpetuate the location of said corner, I did, at the exact location thereof, place a permanent marker consisting of PK NAIL 1/2" IRON PIPE

which reference or witness monuments are located in the manner following:



Revised date	Revised date	Revised date
6-29-70	8-8-89	
6-8-73	8-11-95	
8-10-76	10-6-98	
8-1-79	11-15-07	
7-13-82		
12-9-87		
4-21-89 NL		



CERTIFICATE OF LOCATION OF GOVERNMENT CORNER

County of Anoka

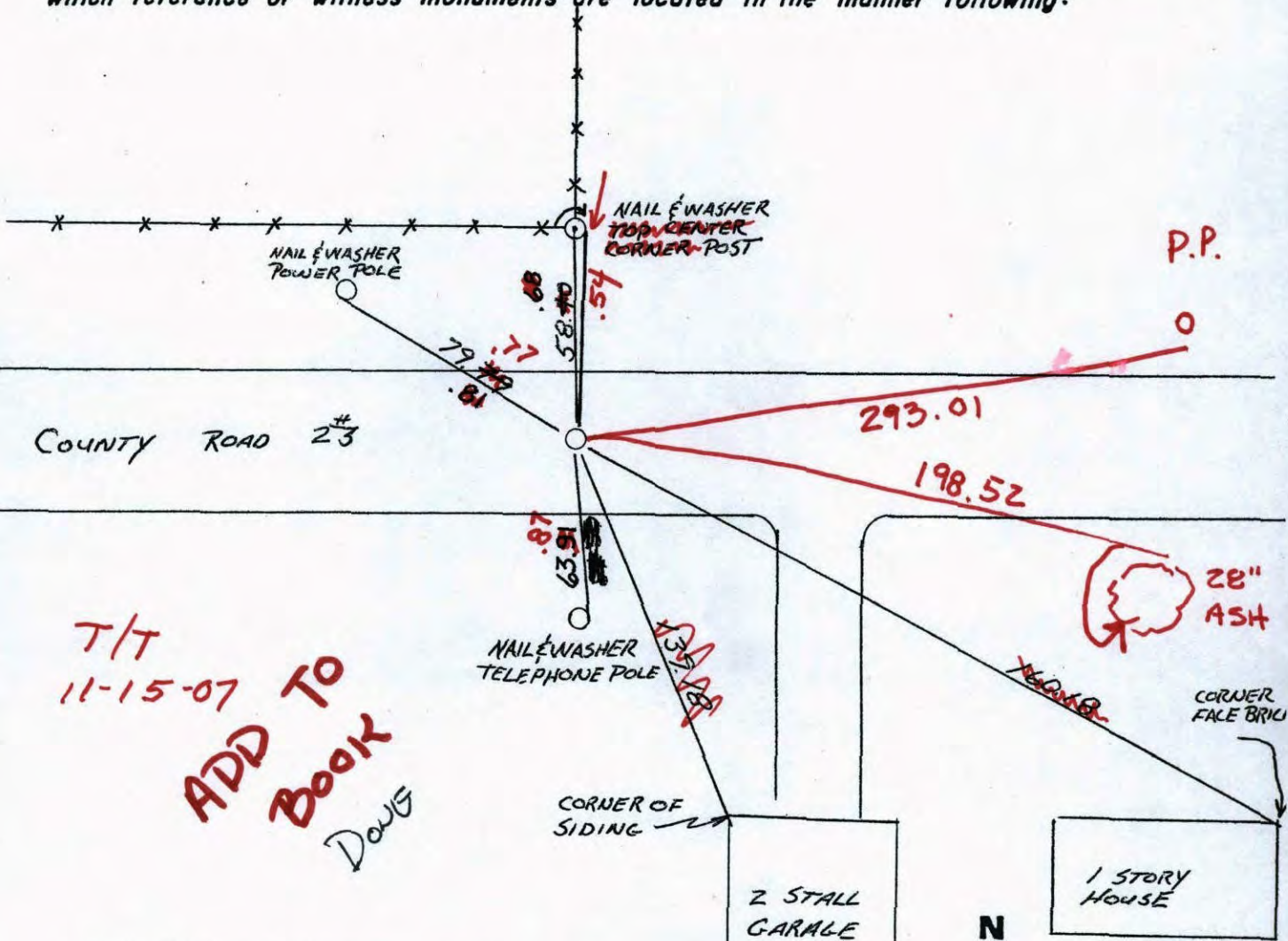
State of Minnesota

SOUTH 1/4 Corner of Sec. 14 Township 32 Range 22

I hereby certify that on the 17TH day of NOVEMBER, 1964, I found the described corner which was evidenced by AREA RESURVEY

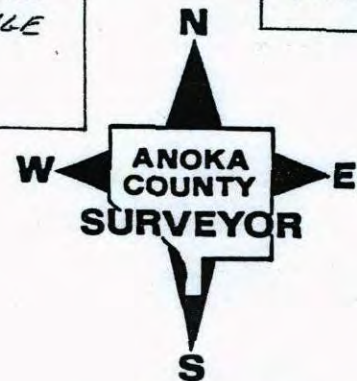
and I further certify that to perpetuate the location of said corner, I did, at the exact location thereof, place a permanent marker consisting of PK. NAIL 1/2" IRON PIPE

which reference or witness monuments are located in the manner following:



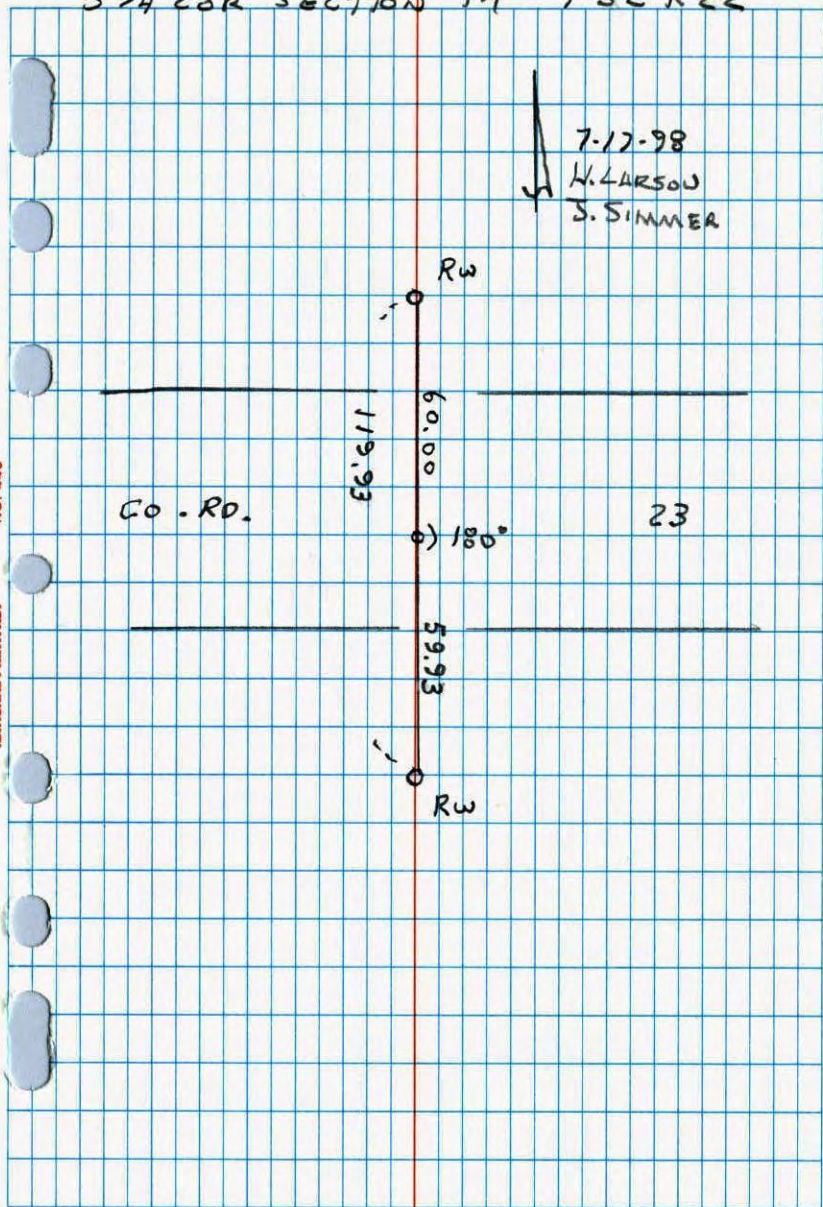
T/T
11-15-07
ADD TO
BOOK
Doug

Revised date	Revised date	Revised date
6-29-70	8-8-89	
6-8-73	8-11-95	
8-10-76	10-6-98	
8-1-79		
7-13-82		
12-9-87		
4-21-89 NL		



CONSTRUCTION TIE
S 1/4 COR SECTION 14 T32 R22

NATIONAL PRINTING NO. 448

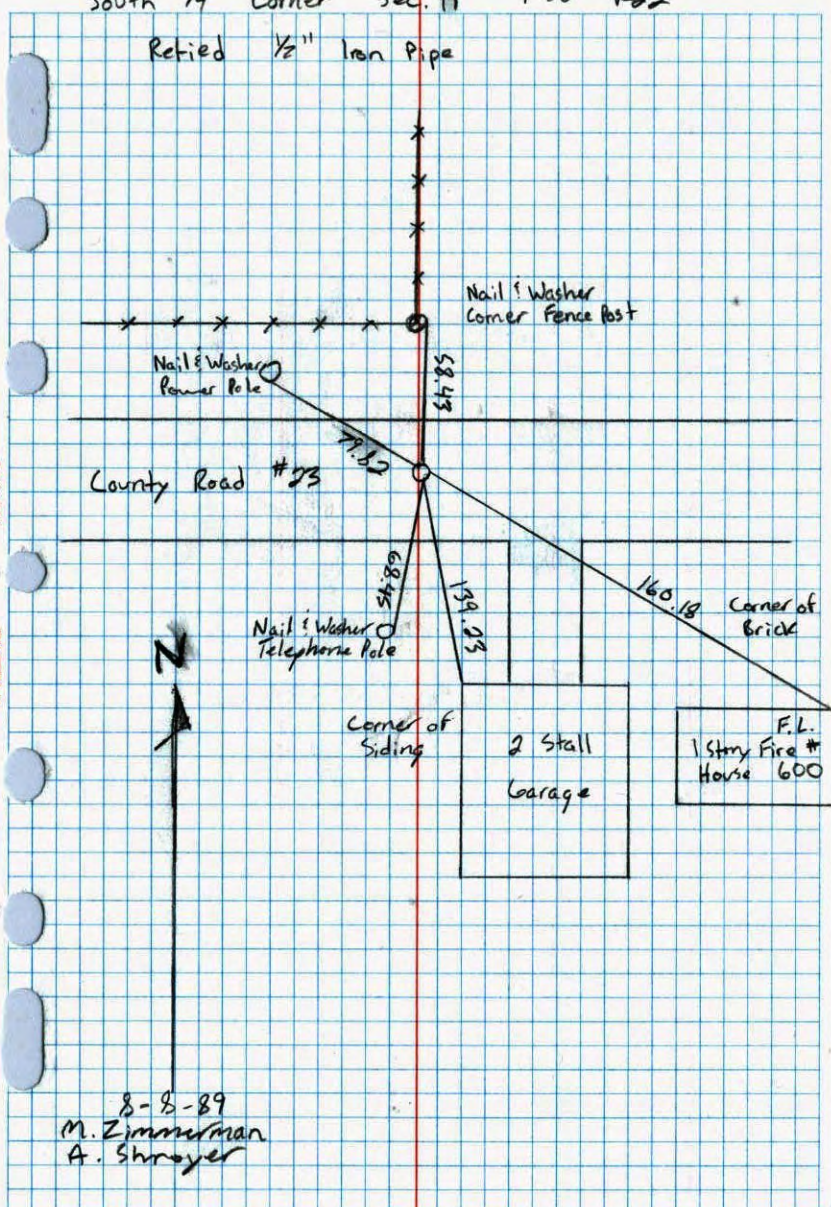


7-17-98
H. CARSON
S. SIMMER

South 1/4 Corner Sec. 14 T32 R22

Retied 1/2" Iron Pipe

NO. 448 TELETYPE



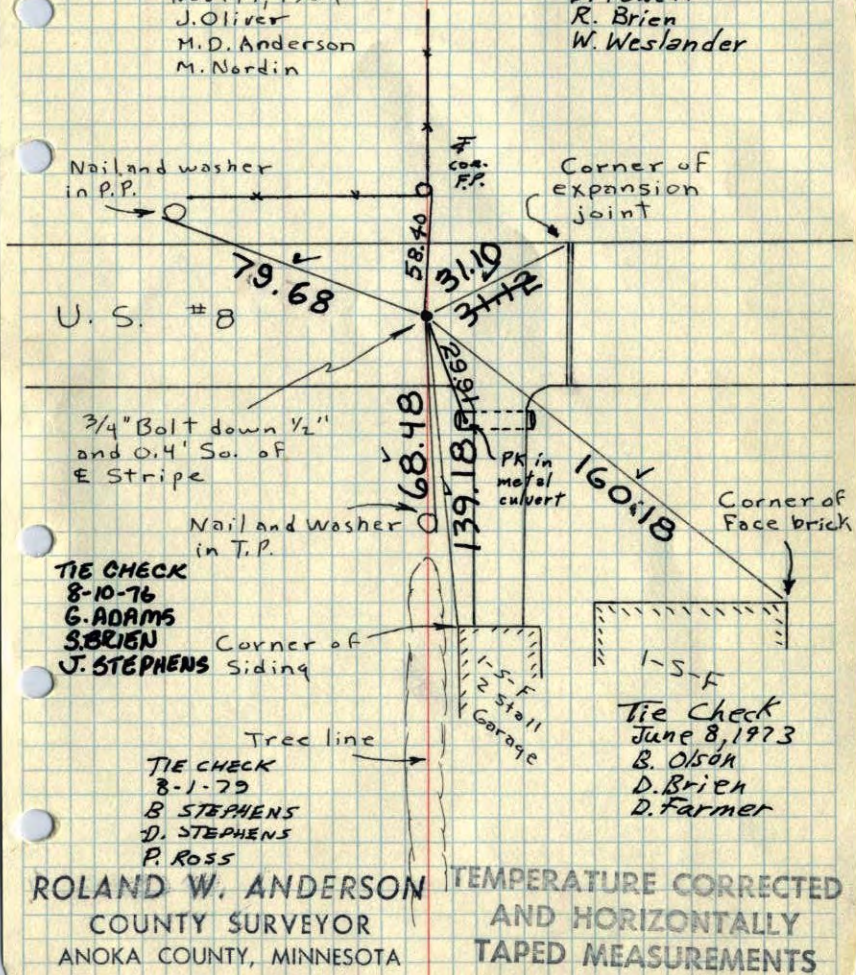
8-8-89
M. Zimmerman
A. Shroyer

S 1/4 Cor. Sec. 14, T32, R22

Set 3/4" x 3 1/2" Bolt From Resurvey, flush in
3 lane Concrete Pavement of U.S. Highway #8.

Nov. 17, 1964
J. Oliver
M.D. Anderson
M. Nordin

Tie Check
June 29, 1970
D. Powell
R. Brien
W. Weslander



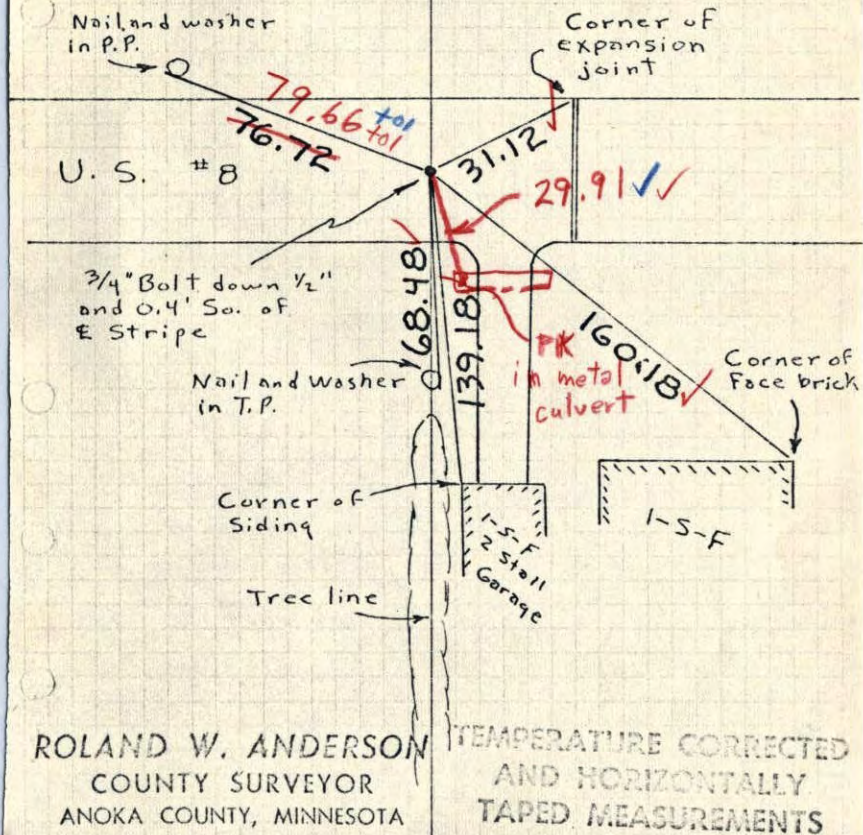
ROLAND W. ANDERSON COUNTY SURVEYOR ANOKA COUNTY, MINNESOTA
TEMPERATURE CORRECTED AND HORIZONTALLY TAPED MEASUREMENTS

S 1/4 Cor. Sec. 14, T32, R22

Set 3/4" x 3 1/2" Bolt From Resurvey, ~~flush~~ ^{flush} down 1/2" in
3 lane Concrete Pavement of U.S. Highway #8.

Nov. 17, 1964
J. Oliver
M.D. Anderson
M. Nordin

6/29/70
#10-88
D. Powell
R. Brien
W. Weslander



ROLAND W. ANDERSON COUNTY SURVEYOR ANOKA COUNTY, MINNESOTA
TEMPERATURE CORRECTED AND HORIZONTALLY TAPED MEASUREMENTS

S 1/4 Cor. Sec. 14, T 32, R 22

Set 3/4" x 3 1/2" Bolt down 1/2" in Conc. Perm't
of U.S. #8 from Resurvey.

N
17 Nov. 64
40° #1
J. Oliver
M.D. Anderson
M. Nardin

