

# CERTIFICATE OF LOCATION OF GOVERNMENT CORNER

County of Anoka

State of Minnesota

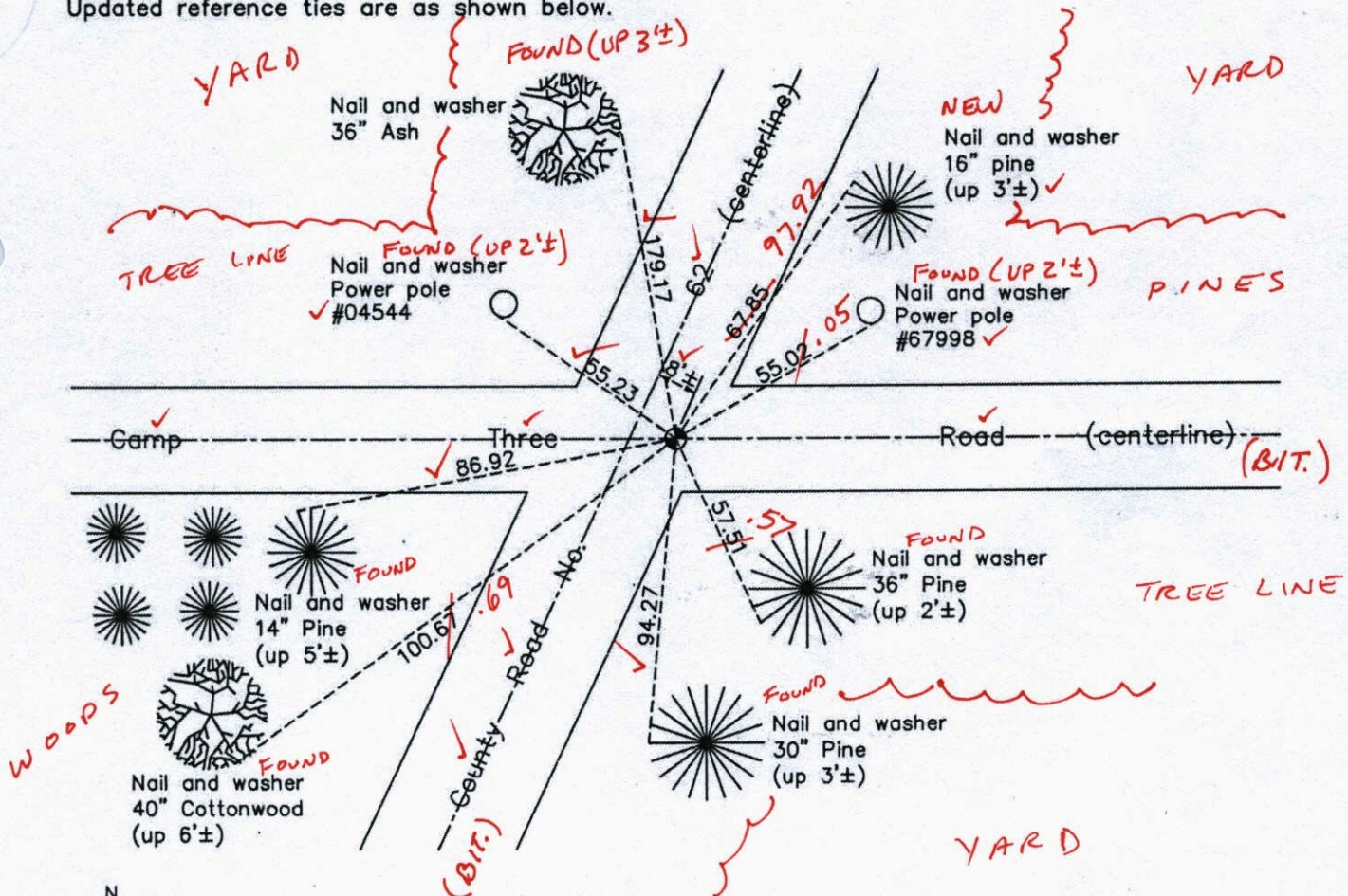
## South 1/4 Corner of Sec. 15 Township 32 Range 22

On the 20th day of July, 1964, the described corner was evidenced by area resurvey

and to perpetuate the location of said corner, at the exact location thereof, a permanent marker was placed consisting of a cast iron monument

AND on the 12th day of September, 2012, said permanent marker was replaced with a cast iron monument after road construction and the ties were updated

Updated reference ties are as shown below.



10-13-14  
E BK-SS  
TOTAL STA.

Revision Date 12/17/13

N.A.D. 1983 Coordinates  
(1996 Adjustment)

County Project Coordinates	
Northing	179960.1471
Easting	550538.2371
Date	6/17/03

I hereby certify that this United States public land survey monument record is correct and complete to the best of my knowledge and belief.

Date 12/17/13

Larry D. Hoium, Anoka County Surveyor  
 Minnesota License Number 18165



# CERTIFICATE OF LOCATION OF GOVERNMENT CORNER

County of Anoka

State of Minnesota

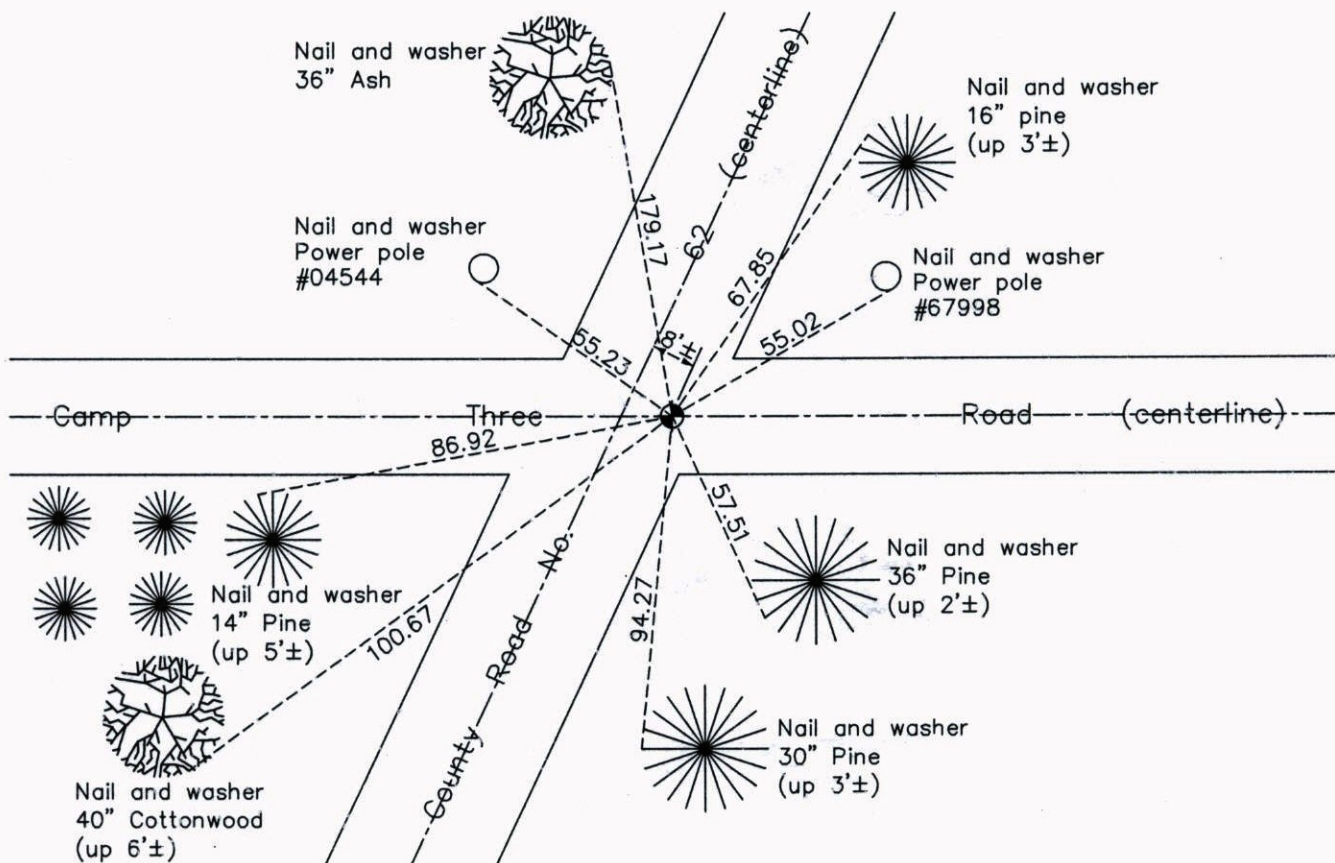
## South $\frac{1}{4}$ Corner of Sec. 15 Township 32 Range 22

On the 20th day of July, 1964, the described corner was evidenced by area resurvey

and to perpetuate the location of said corner, at the exact location thereof, a permanent marker was placed consisting of a cast iron monument

AND on the 12th day of September, 2012, said permanent marker was replaced with a cast iron monument after road construction and the ties were updated

Updated reference ties are as shown below.



N

W ANOKA COUNTY SURVEYOR E

S

Revision Date

12/17/13

N.A.D. 1983 Coordinates  
(1996 Adjustment)

County Project Coordinates	
Northing	179960.1471
Easting	550538.2371
Date	6/17/03

I hereby certify that this United States public land survey monument record is correct and complete to the best of my knowledge and belief.

*Larry D. Hoium* Date 12/17/13

Larry D. Hoium, Anoka County Surveyor

Minnesota License Number 18165



5/25/2012  
Remove

# CERTIFICATE OF LOCATION OF GOVERNMENT CORNER

County of Anoka

State of Minnesota

## South 1/4 Corner of Sec. 15 Township 32 Range 22

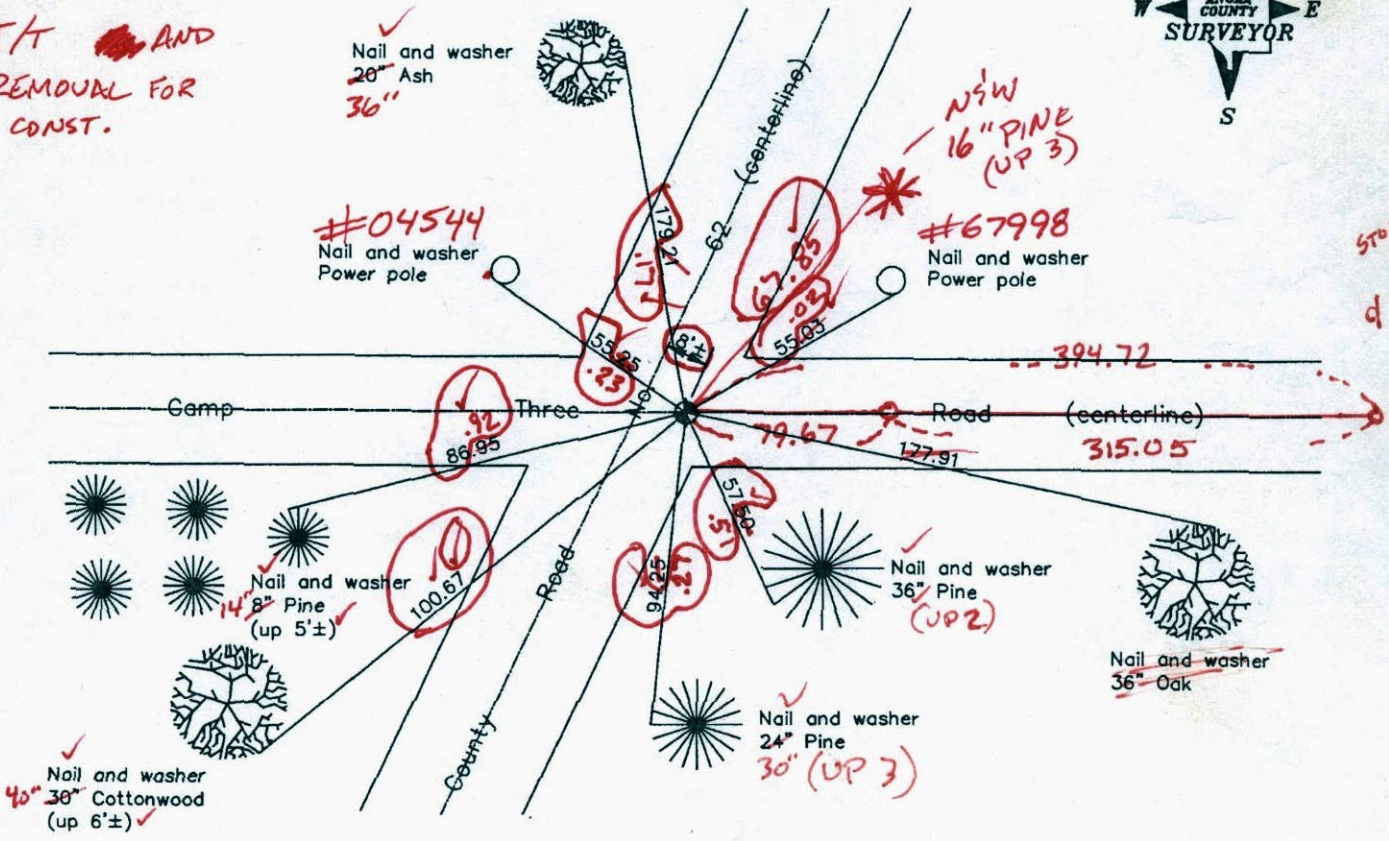
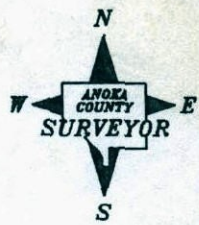
On the 20th day of July, 1964, the described corner was evidenced by area resurvey

and to perpetuate the location of said corner, at the exact location thereof, a permanent marker was placed consisting of a cast iron monument SET C.I.M. JS SH 9-12-12  
RETIED ARE CIRCLED FINAL TIES

AND on the 15th day of November, 2007, said permanent marker was found and the ties were updated

Updated reference ties are as shown below.

6-12-12 JS SH  
T/T AND  
REMOVAL FOR  
CONST.



Revised date
8/08/89
8/11/95
11/15/07

N.A.D. 1983 Coordinates (1996 Adjustment)	
County Project Coordinates	
Northing	179960.1471
Easting	550538.2371
Date	6/17/03

I hereby certify that this United States public land survey monument record is correct and complete to the best of my knowledge and belief.

*Larry D. Hoium* Date 11/15/07  
 Larry D. Hoium, Anoka County Surveyor  
 Minnesota License Number 18165



# CERTIFICATE OF LOCATION OF GOVERNMENT CORNER

County of Anoka

State of Minnesota

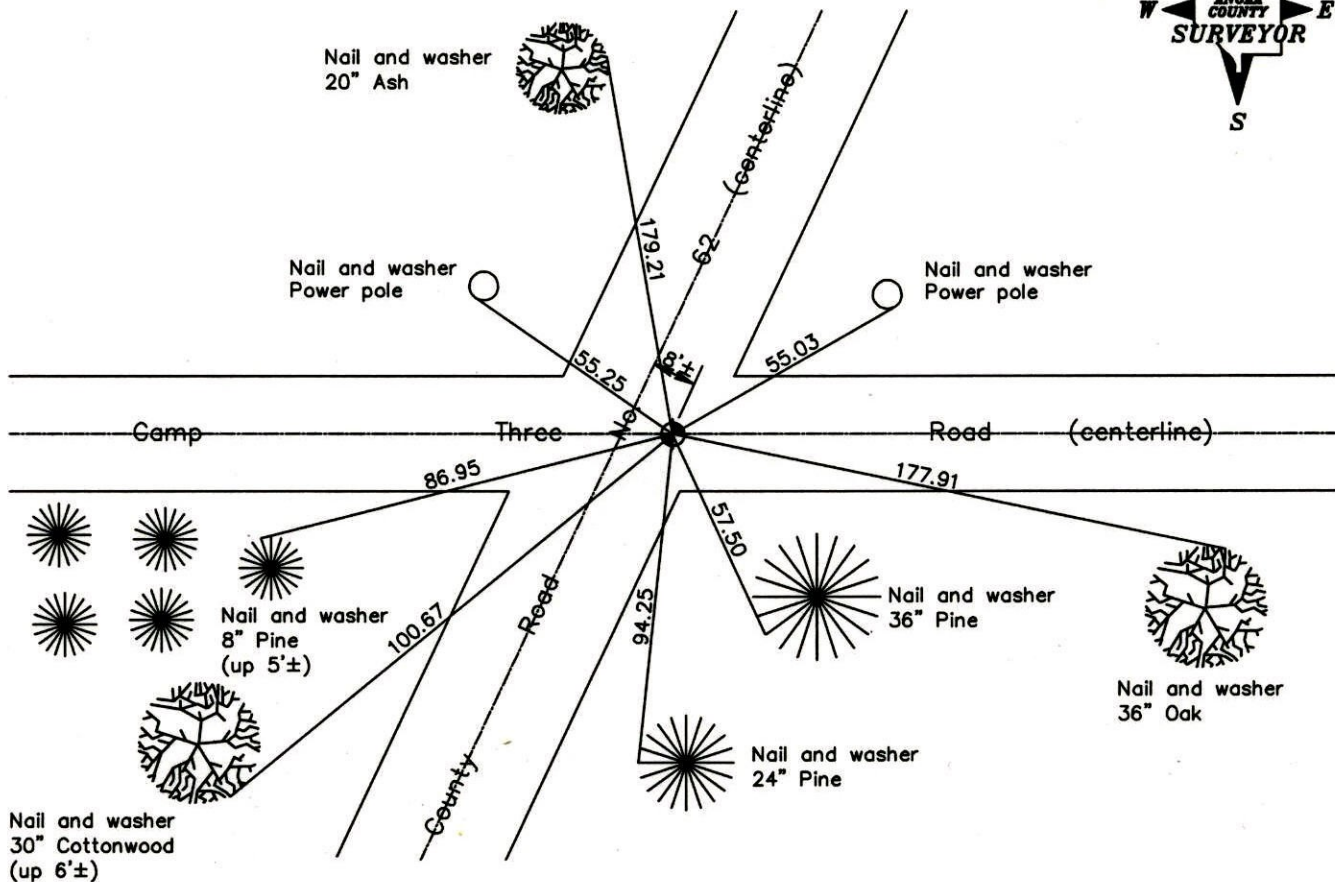
South 1/4 Corner of Sec. 15 Township 32 Range 22

On the 20th day of July, 1964, the described corner was evidenced by area resurvey

and to perpetuate the location of said corner, at the exact location thereof, a permanent marker was placed consisting of a cast iron monument

AND on the 15th day of November, 2007, said permanent marker was found and the ties were updated

Updated reference ties are as shown below.



Revised date
8/08/89
8/11/95
11/15/07

N.A.D. 1983 Coordinates (1996 Adjustment)	
County Project Coordinates	
Northing	<u>179960.1471</u>
Easting	<u>550538.2371</u>
Date	<u>6/17/03</u>

I hereby certify that this United States public land survey monument record is correct and complete to the best of my knowledge and belief.

*Larry D. Hoiium* Date 11/15/07

Larry D. Hoiium, Anoka County Surveyor

Minnesota License Number 18165



# CERTIFICATE OF LOCATION OF GOVERNMENT CORNER

County of Anoka

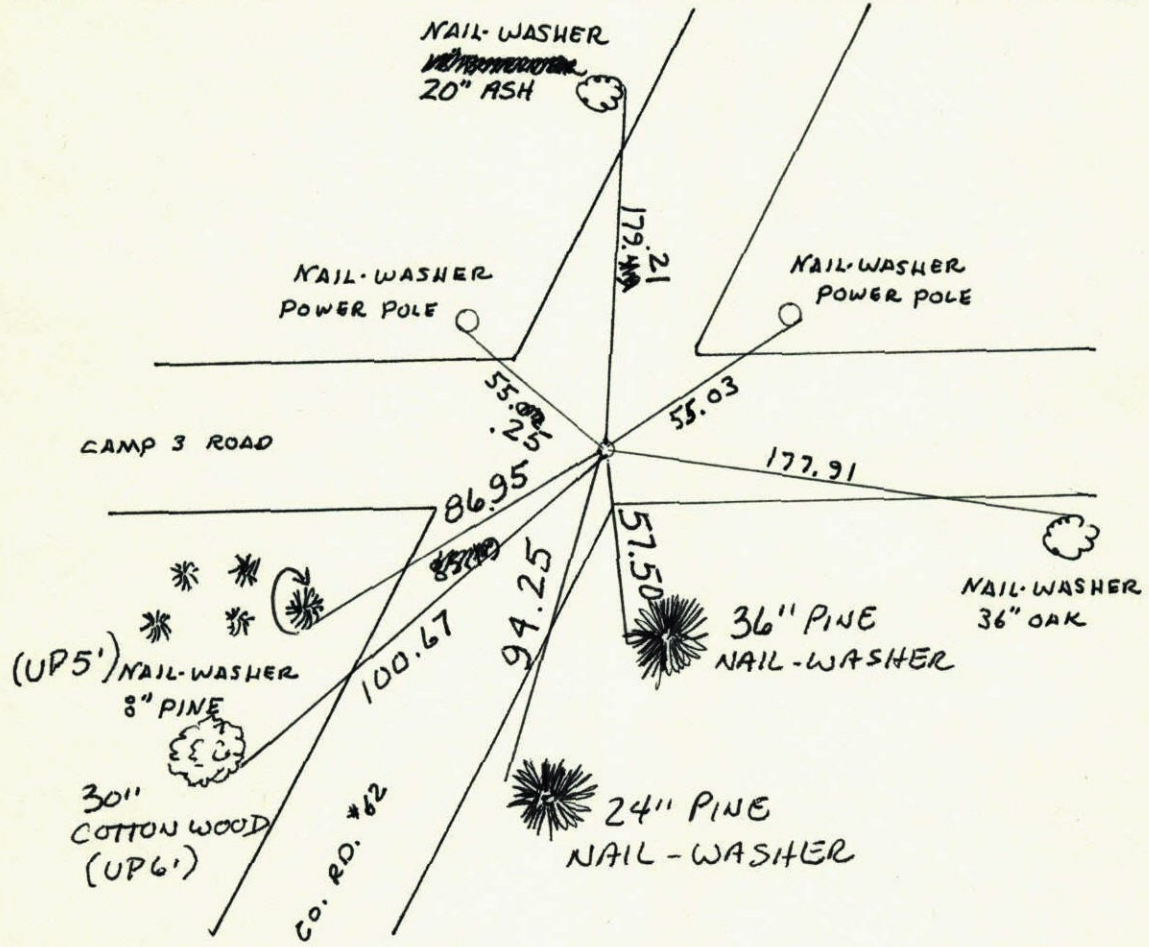
State of Minnesota

SOUTH 1/4 Corner of Sec. 15 Township 32 Range 22

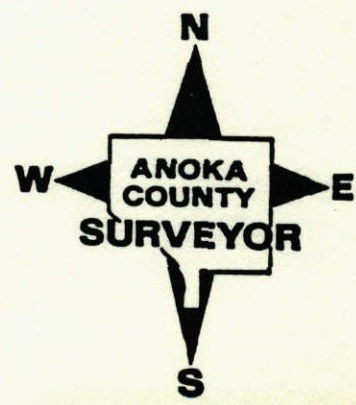
I hereby certify that on the 20 day of JULY, 1964, I found the described corner which was evidenced by AREA RESURVEY

and I further certify that to perpetuate the location of said corner, I did, at the exact location thereof, place a permanent marker consisting of CAST IRON MONUMENT (8' E. OF & CO. RD. 62 ON & CAMP 3 RD)

which reference or witness monuments are located in the manner following:



Revised date	Revised date	Revised date
7-20-64	8-8-89	
6-26-70	8-11-95	
6-8-73	11-15-07	
8-10-76		
8-1-79		
7-13-82		
8-2-85		





# CERTIFICATE OF LOCATION OF GOVERNMENT CORNER

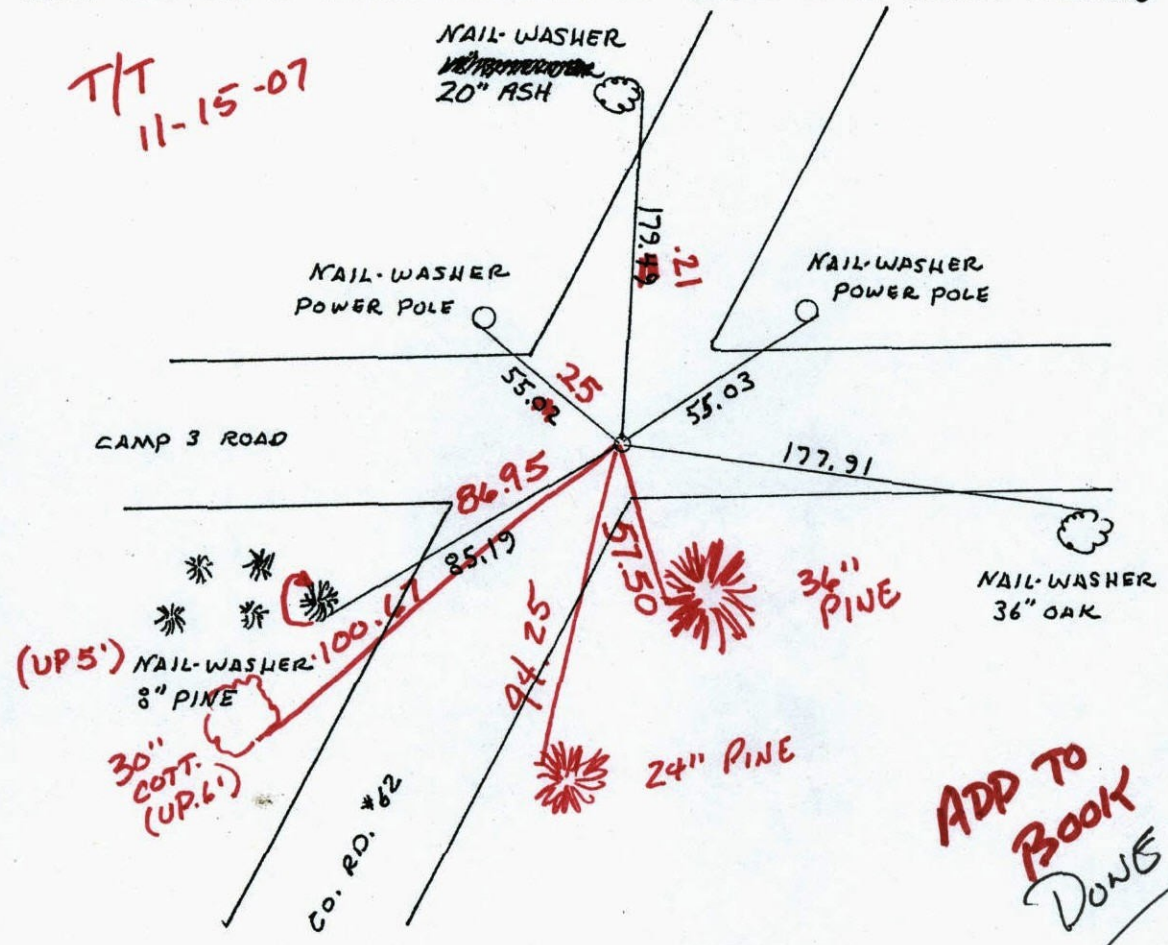
County of Anoka State of Minnesota

SOUTH 1/4 Corner of Sec. 15 Township 32 Range 22

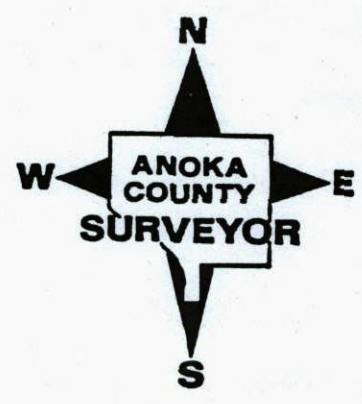
I hereby certify that on the 20 day of JULY, 1964, I found the described corner which was evidenced by AREA RESURVEY

and I further certify that to perpetuate the location of said corner, I did, at the exact location thereof, place a permanent marker consisting of CAST IRON MONUMENT  
8' E OF E Co. RD. 62 ON E CAMP 3

which reference or witness monuments are located in the manner following:



Revised date	Revised date	Revised date
7-20-64	8-8-89	
6-26-70	8-11-95	
6-8-73		
8-10-76		
8-1-79		
7-13-82		
8-2-85		

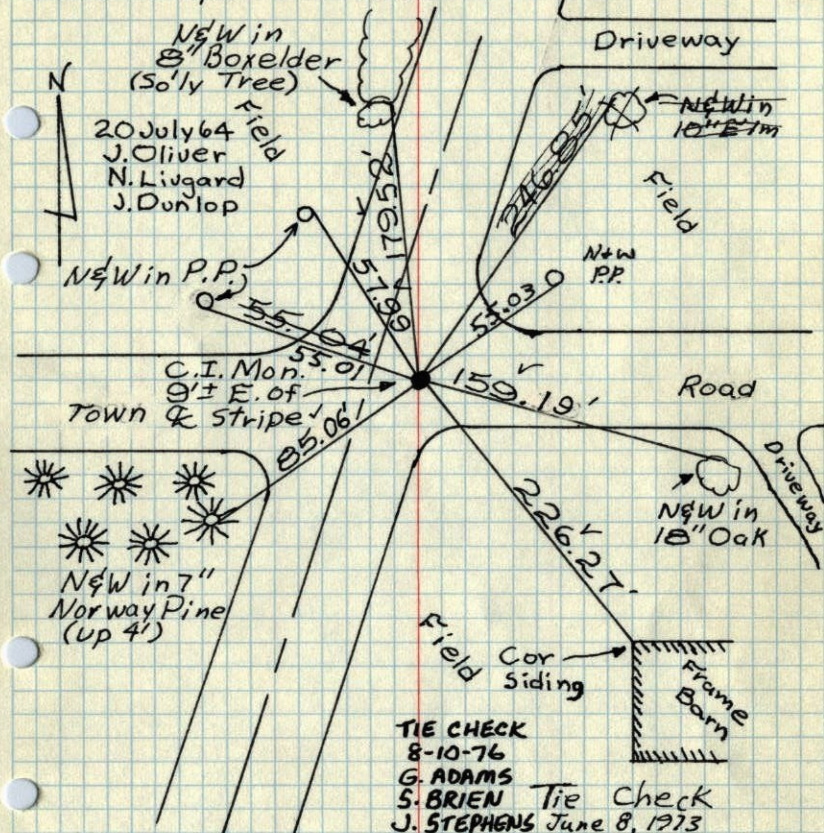




# S/4 Cor. Sec. 15, T32, R22

Set Cast Iron Monument from Resurvey. flush.

Set PK Spk's 2.00' No. & E.



TIE CHECK  
8-10-76  
G. ADAMS  
S. BRIEN Tie Check  
J. STEPHENS June 8, 1973  
D. Brien

TIE CHECK  
8-1-79  
B. STEPHENS  
D. STEPHENS  
P. ROSS

Tie Check  
June 26, 1970  
D. Powell  
R. Brien  
W. Westlander

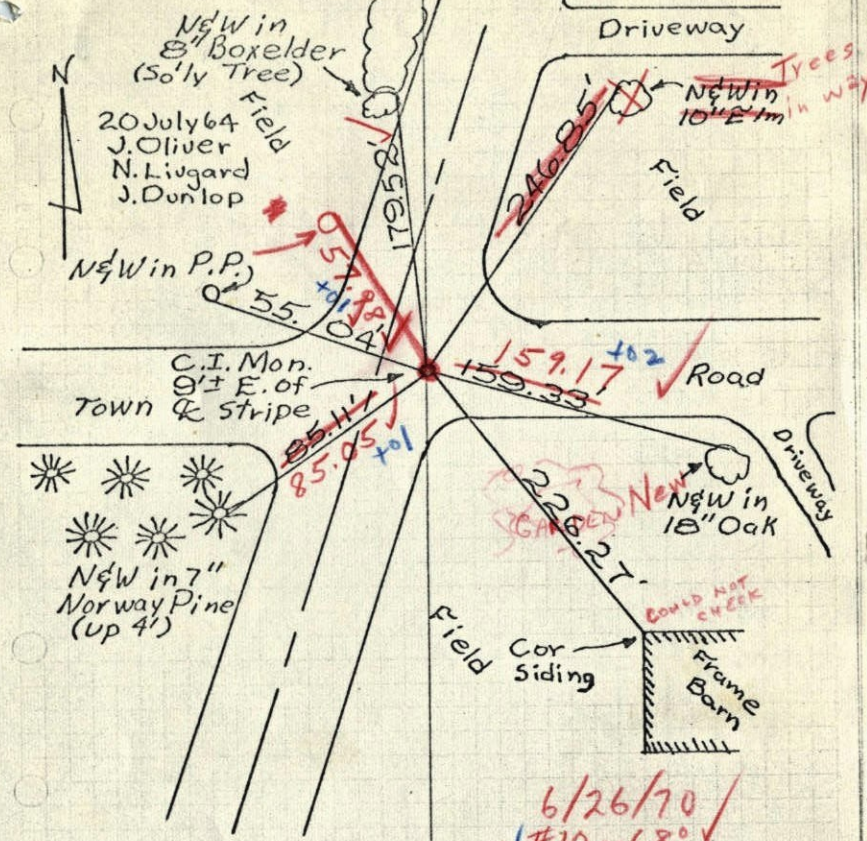
**ROLAND W. ANDERSON**  
COUNTY SURVEYOR  
ANOKA COUNTY, MINNESOTA

**TEMPERATURE CORRECTED  
AND HORIZONTALLY  
TAPED MEASUREMENTS**

# S/4 Cor. Sec. 15, T32, R22

Set Cast Iron Monument from Resurvey. flush.

Set PK Spk's 2.00' No. & E.



6/26/70  
#10 - 68°  
D. Powell  
R. Brien  
W. Westlander

**ROLAND W. ANDERSON**  
COUNTY SURVEYOR  
ANOKA COUNTY, MINNESOTA

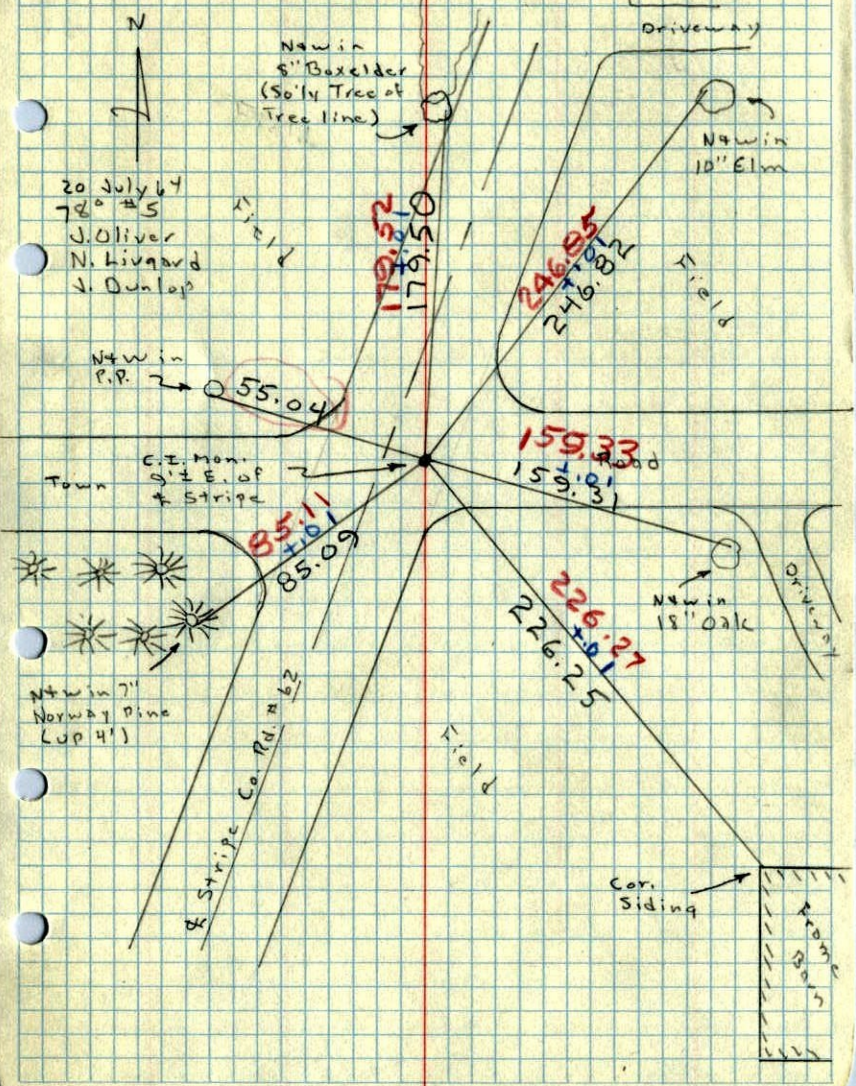
**TEMPERATURE CORRECTED  
AND HORIZONTALLY  
TAPED MEASUREMENTS**



3/4 Cor. Sec. 15, T32, R22

Set Cast Iron Monument from Resurvey

Set PK Spk's 2.00' No. & E.

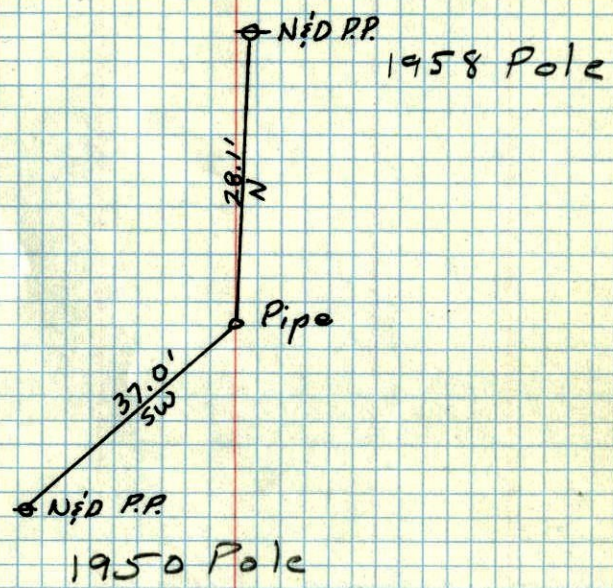


20 July 64  
780 #5  
J. Oliver  
N. Livgard  
J. Dunlop

6 ✓

3/4 Cor. Sec. 15 T32 R22

PIPE



Ties gone?  
6/4/62 JO

A.C. Hwy. D.  
1960 Approx