

CERTIFICATE OF LOCATION OF GOVERNMENT CORNER

County of Anoka State of Minnesota

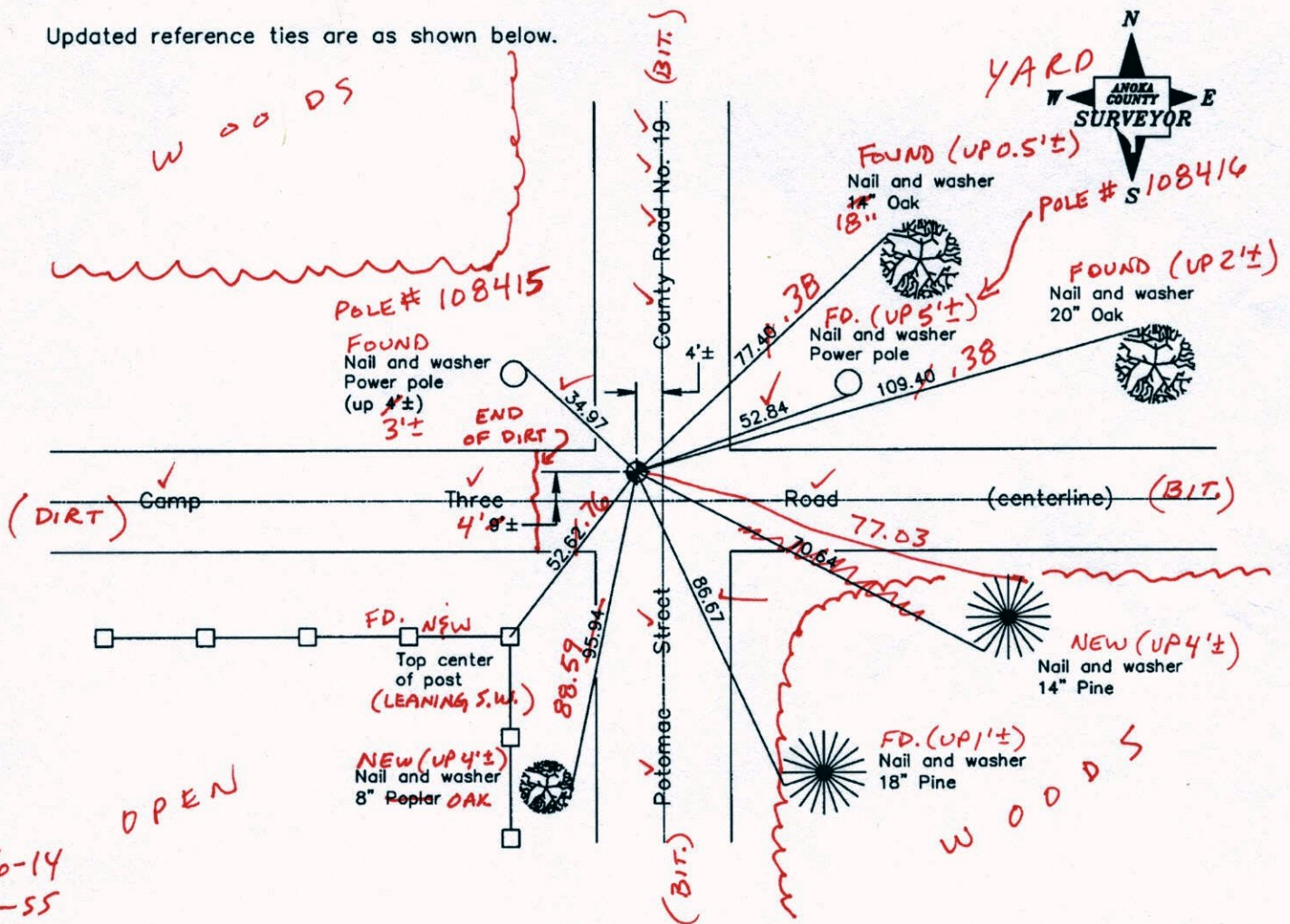
Southwest Corner of Sec. 15 Township 32 Range 22

On the 13th day of August, 1964, the described corner was evidenced by an iron pipe

and to perpetuate the location of said corner, at the exact location thereof, a permanent marker was placed consisting of a cast iron monument

AND on the 13th day of November, 2007, said permanent marker was found and the ties were updated

Updated reference ties are as shown below.



9-26-14
BK-55

TOTAL STA.
URS

Revised date
6/13/97
8/26/97
11/13/07

N.A.D. 1983 Coordinates (1996 Adjustment)	
County Project Coordinates	
Northing	179979.3955
Easting	547881.0832
Date	6/17/03

I hereby certify that this United States public land survey monument record is correct and complete to the best of my knowledge and belief.

Larry D. Hoium Date 11/13/07

Larry D. Hoium, Anoka County Surveyor

Minnesota License Number 18165

3DQ = 0.06 N = 179979.3909 E = 547881.0371

CERTIFICATE OF LOCATION OF GOVERNMENT CORNER

County of Anoka

State of Minnesota

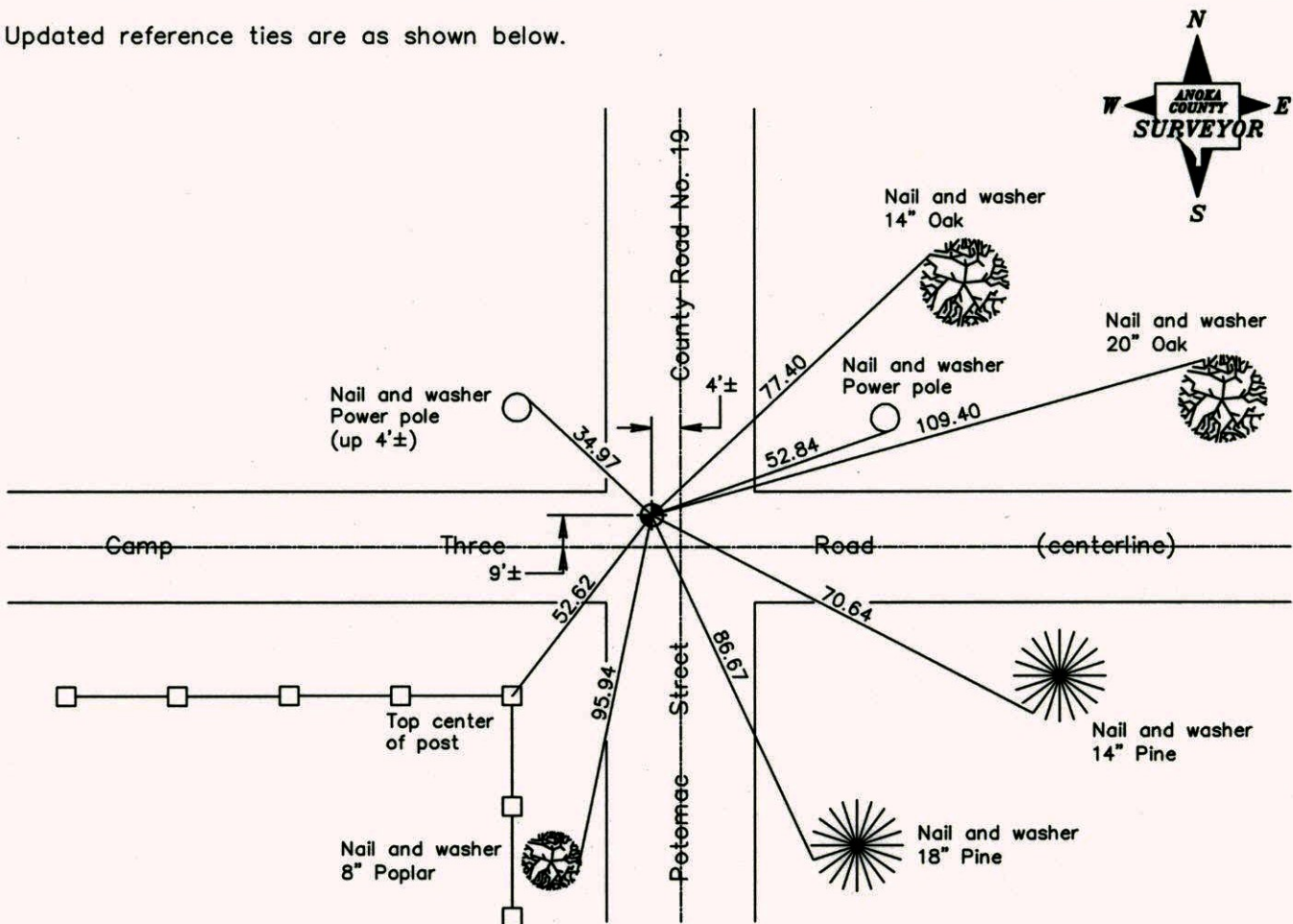
Southwest Corner of Sec. 15 Township 32 Range 22

On the 13th day of August, 1964, the described corner was evidenced by an iron pipe

and to perpetuate the location of said corner, at the exact location thereof, a permanent marker was placed consisting of a cast iron monument

AND on the 13th day of November, 2007, said permanent marker was found and the ties were updated

Updated reference ties are as shown below.



Revised date

6/13/97
8/26/97
11/13/07

**N.A.D. 1983 Coordinates
(1996 Adjustment)**

County Project Coordinates
Northing <u>179979.3955</u>
Easting <u>547881.0832</u>
Date <u>6/17/03</u>

I hereby certify that this United States public land survey monument record is correct and complete to the best of my knowledge and belief.

Larry D. Hoium Date 11/13/07
 _____, Anoka County Surveyor
 Minnesota License Number 18165

CERTIFICATE OF LOCATION OF GOVERNMENT CORNER

County of Anoka

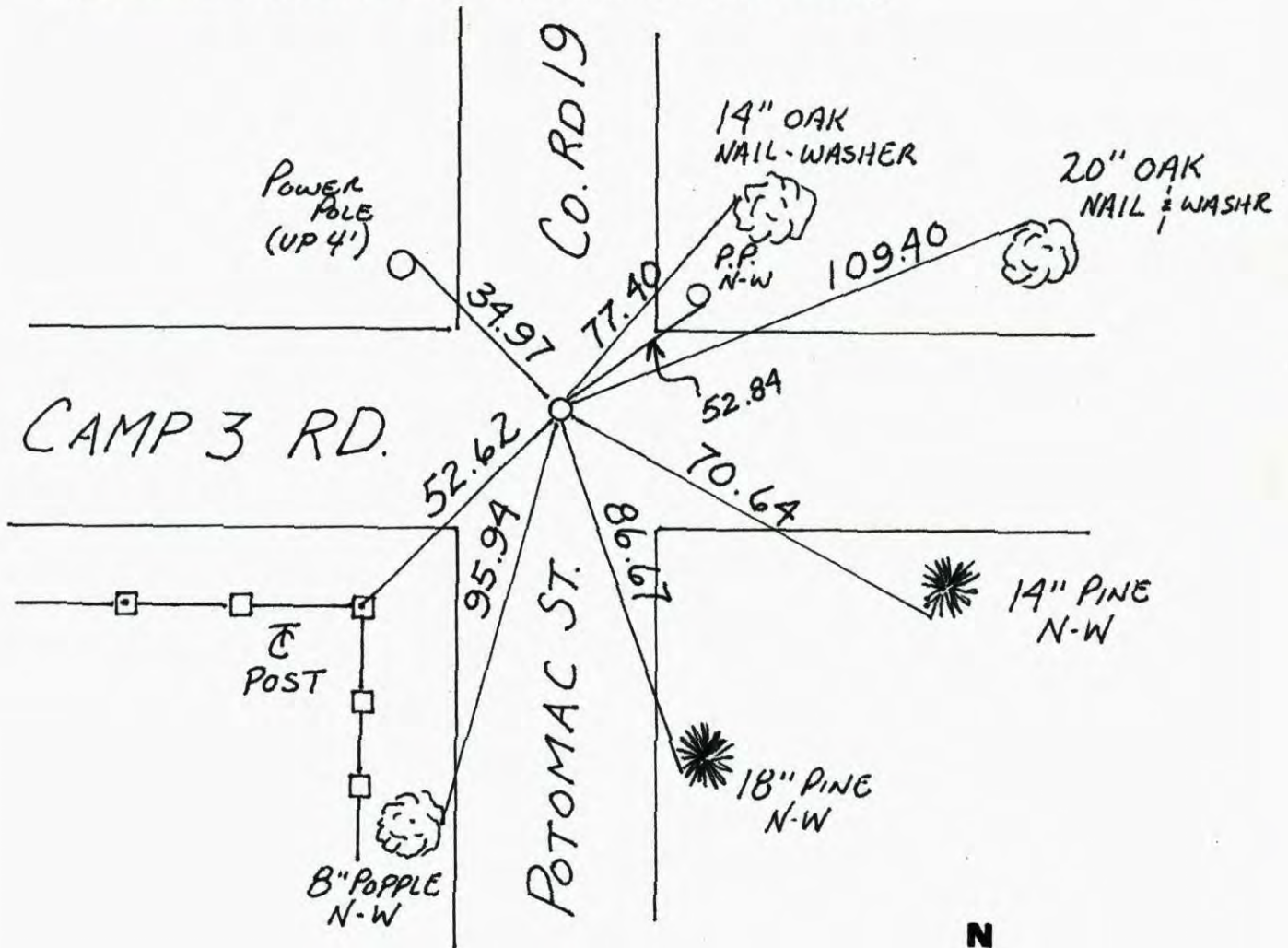
State of Minnesota

SOUTHWEST Corner of Sec. 15 Township 32 Range 22

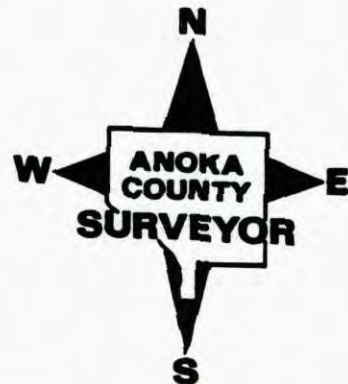
I hereby certify that on the 13 day of AUG., 1964, I found the described corner which was evidenced by IRON PIPE

and I further certify that to perpetuate the location of said corner, I did, at the exact location thereof, place a permanent marker consisting of MON. IS 4' WEST AND 9' NORTH OF CENTERLINE

which reference or witness monuments are located in the manner following:



Revised date	Revised date	Revised date
8-11-95		
6-13-97		
RESET 8-26		
11-13-07		



CERTIFICATE OF LOCATION OF GOVERNMENT CORNER

County of Anoka

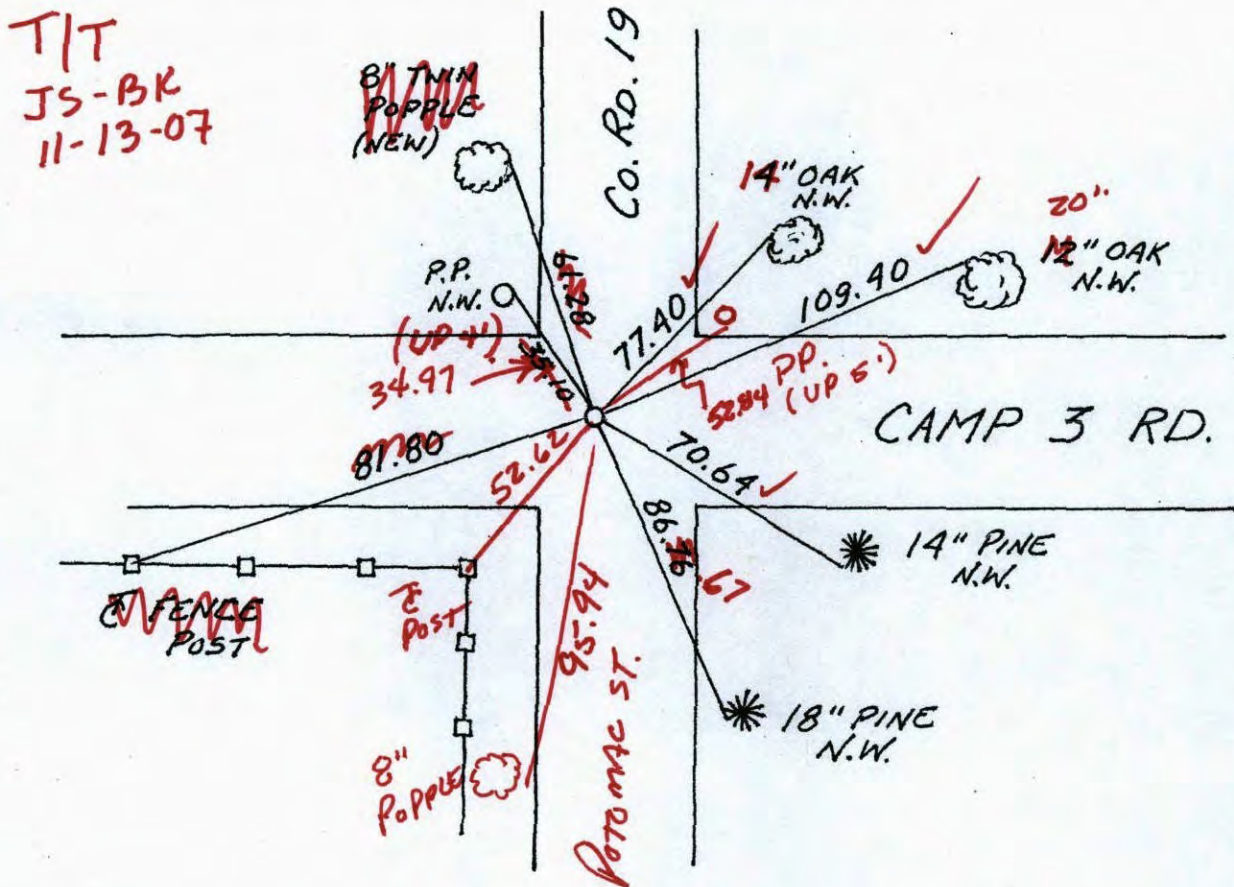
State of Minnesota

SOUTHWEST Corner of Sec. 15 Township 32 Range 22

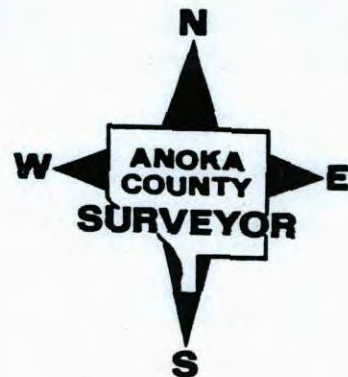
I hereby certify that on the 13 day of AUG., 1964, I found the described corner which was evidenced by IRON PIPE

and I further certify that to perpetuate the location of said corner, I did, at the exact location thereof, place a permanent marker consisting of MON. IS 4' WEST AND 9' NORTH OF CENTERLINE

which reference or witness monuments are located in the manner following:

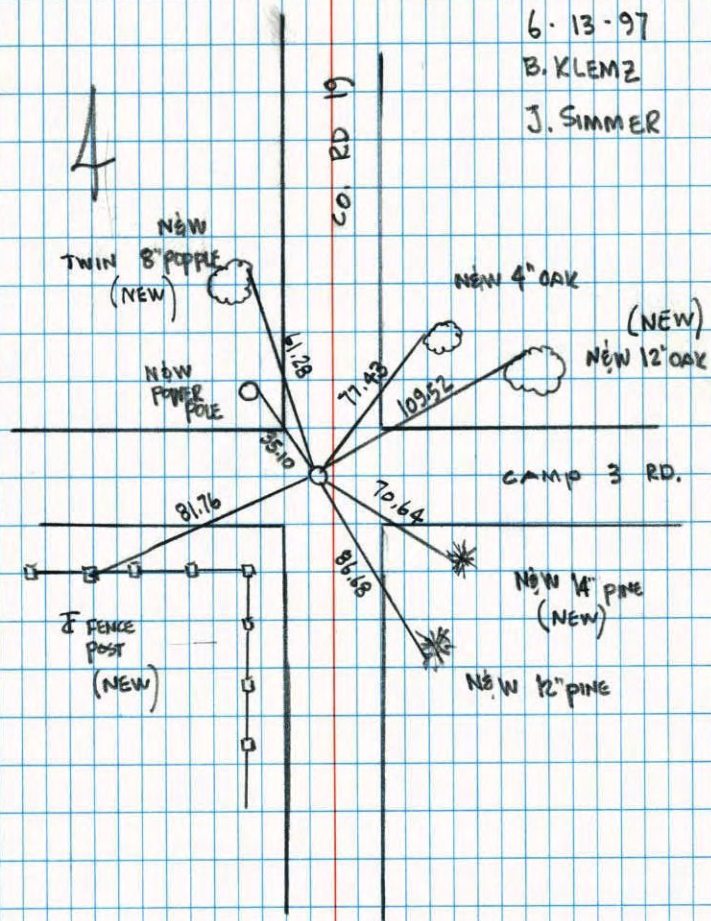


Revised date	Revised date	Revised date
8-11-95		
6-13-97		
RESET 8-26-97		



CONSTRUCTION TIES

S.W. COR. SEC. 15 T32 R22

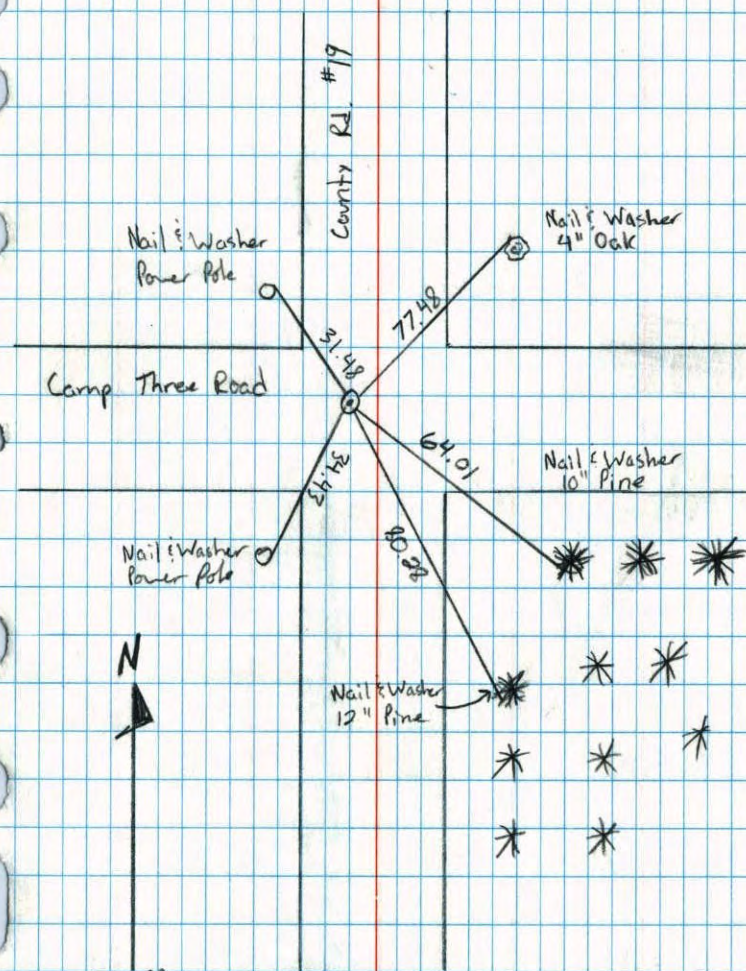


NO. 446

NATIONAL PRINTFAST

Southwest Corner Sec. 15 T32 R22

Retired Cast Iron Monument



NO. 446

TELETYPE

8-10-89
M. Zimmerman
A. Shroyer

SW Cor. Sec. 15, T32, R22

Found $\frac{1}{2}$ " Iron Pipe Flush in Blacktop from
Jim Kurths ties. Replaced Iron Pipe with

13 Aug. 64
J. Oliver
N. Livgard

TIE CHECK

8-1-79

B. STEPHENS

D. STEPHENS

P. ROSS

Nail and Washer
in P.P.

Cast Iron Monument

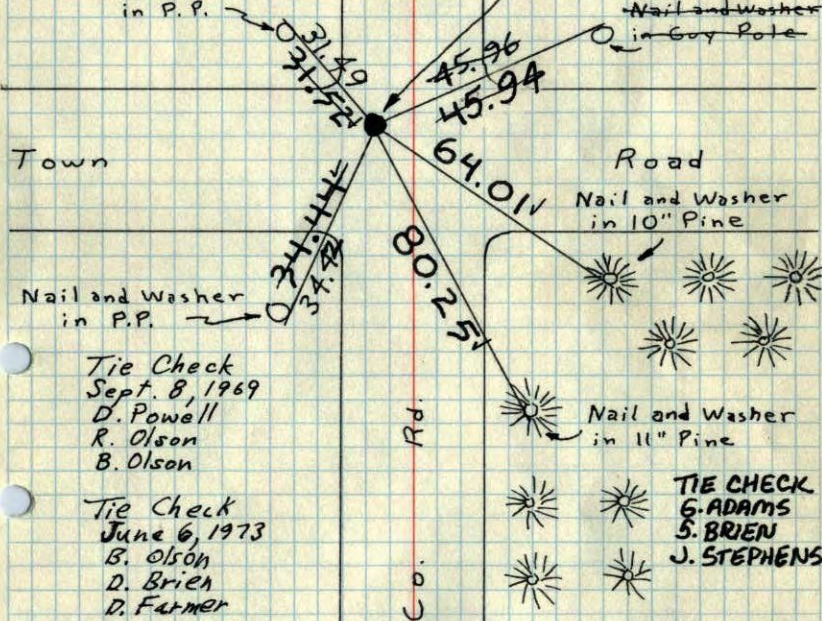
flush. PK's 2.00'

North & East.

9/8/69

$\frac{1}{2}$ " I.P. 4' W. of E Stripe
and 9' No. of E-W
E's.

Nail and Washer
in Guy Pole



TEMPERATURE CORRECTED
AND HORIZONTALLY
TAPED MEASUREMENTS

ROLAND W. ANDERSON
COUNTY SURVEYOR
ANOKA COUNTY, MINNESOTA

SW Cor. Sec. 15, T32, R22

Found $\frac{1}{2}$ " Iron Pipe Flush in Blacktop from
Jim Kurths ties. Set C.I. Mon. flush

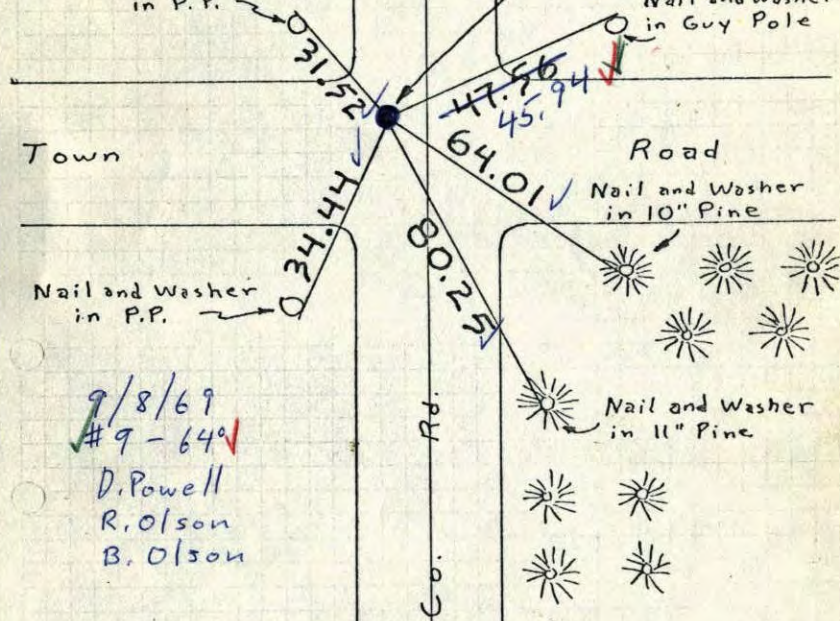
in place of I.P.
PK's 2.00' N+E

13 Aug. 64
J. Oliver
N. Livgard

$\frac{1}{2}$ " I.P. 4' W. of E Stripe
and 9' No. of E-W
E's.

New

Nail and Washer
in Guy Pole



TEMPERATURE CORRECTED
AND HORIZONTALLY
TAPED MEASUREMENTS

ROLAND W. ANDERSON
COUNTY SURVEYOR
ANOKA COUNTY, MINNESOTA

