

# CERTIFICATE OF LOCATION OF GOVERNMENT CORNER

County of Anoka

State of Minnesota

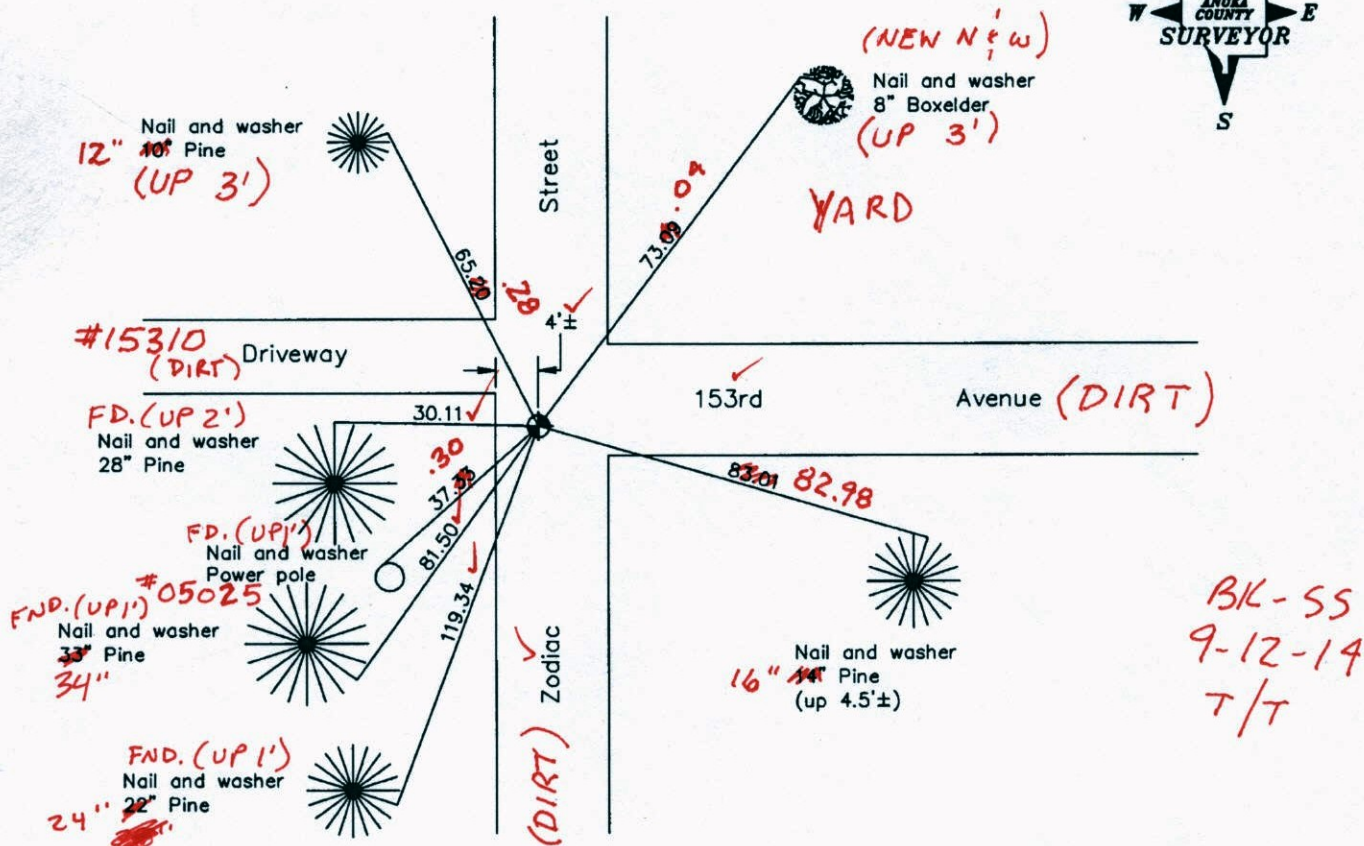
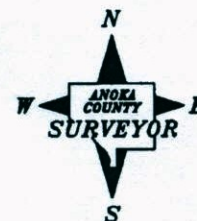
East 1/4 Corner of Sec. 20 Township 32 Range 22

On the 19th day of July, 1962, the described corner was evidenced by Cartwright  
reconstruction ties

and to perpetuate the location of said corner, at the exact location thereof, a permanent marker  
was placed consisting of a cast iron monument down 1.5'±

AND on the 12th day of July, 2007, said permanent marker was found and the ties were  
updated

Updated reference ties are as shown below.



Revised date

8/21/89
8/11/95
7/12/07

N.A.D. 1983 Coordinates  
(1996 Adjustment)

County Project Coordinates	
Northing	<u>177307.2558</u>
Easting	<u>542654.6762</u>
Date	<u>3/19/03</u>

I hereby certify that this United States public land survey monument record is correct and complete to the best of my knowledge and belief.

*Larry D. Hoium* Date 7/12/07  
 \_\_\_\_\_, Anoka County Surveyor  
 Minnesota License Number 18165

**30 = 0.10      N = 177307.3583      E = 542654.7315**

# CERTIFICATE OF LOCATION OF GOVERNMENT CORNER

County of Anoka

State of Minnesota

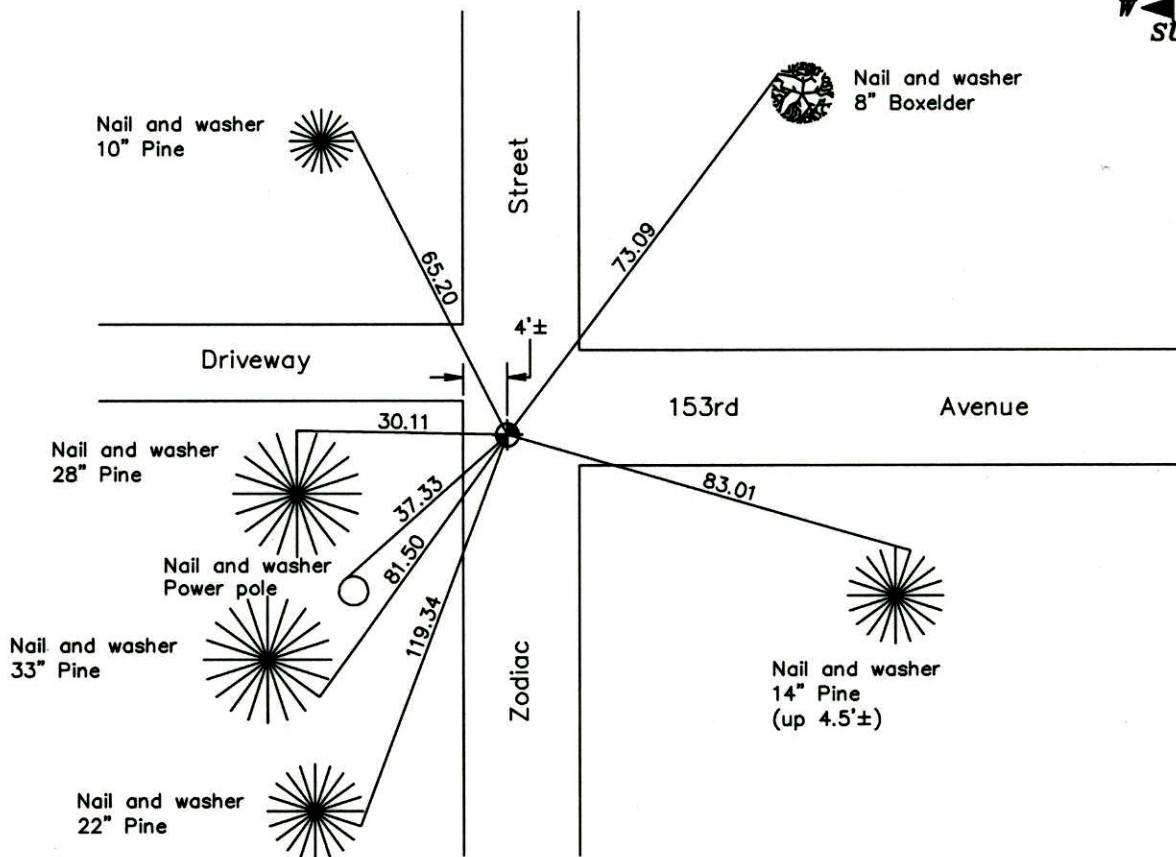
East 1/4 Corner of Sec. 20 Township 32 Range 22

On the 19th day of July, 1962, the described corner was evidenced by Cartwright  
reconstruction ties

and to perpetuate the location of said corner, at the exact location thereof, a permanent marker  
was placed consisting of a cast iron monument down 1.5'±

AND on the 12th day of July, 2007, said permanent marker was found and the ties were  
updated

Updated reference ties are as shown below.



**Revised date**

8/21/89
8/11/95
7/12/07

**N.A.D. 1983 Coordinates  
(1996 Adjustment)**

County Project Coordinates
Northing <u>177307.2558</u>
Easting <u>542654.6762</u>
Date <u>3/19/03</u>

I hereby certify that this United States public land survey monument record is correct and complete to the best of my knowledge and belief.

*Larry D. Hoium* Date 7/12/07

Larry D. Hoium, Anoka County Surveyor  
Minnesota License Number 18165

# CERTIFICATE OF LOCATION OF GOVERNMENT CORNER

County of Anoka

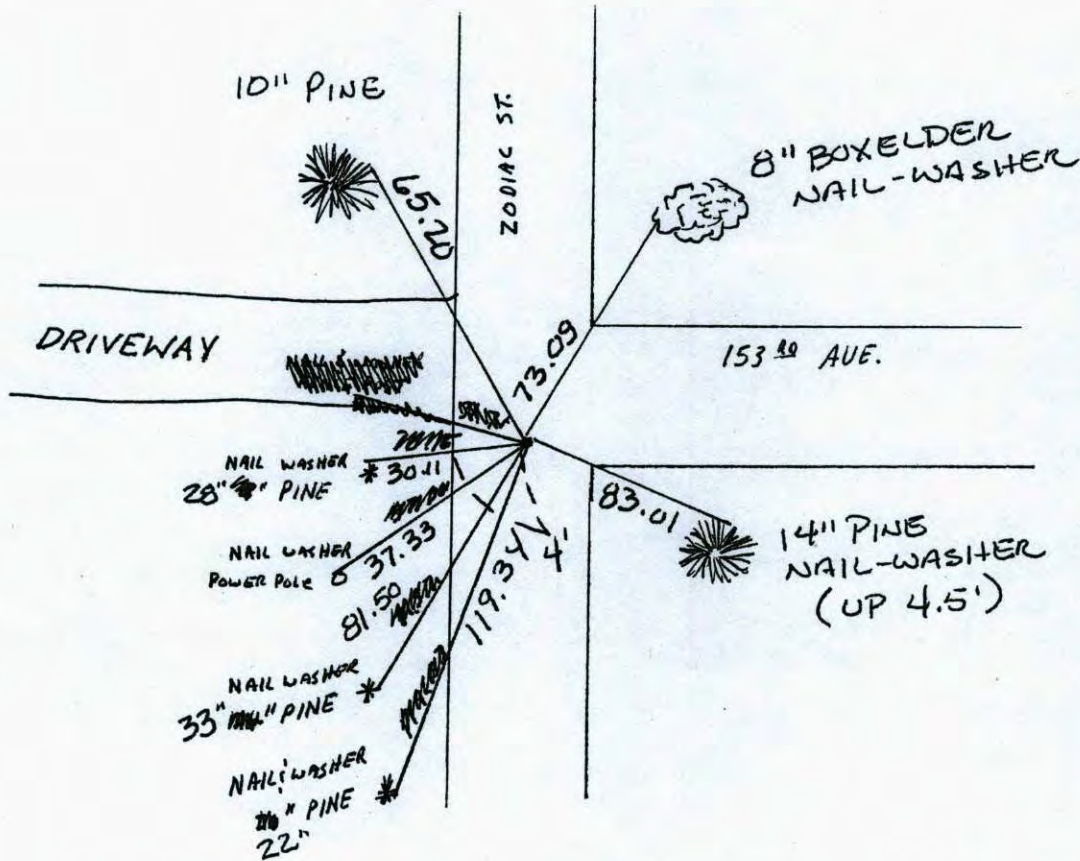
State of Minnesota

EAST ONE QUARTER Corner of Sec. 20 Township 32 Range 22

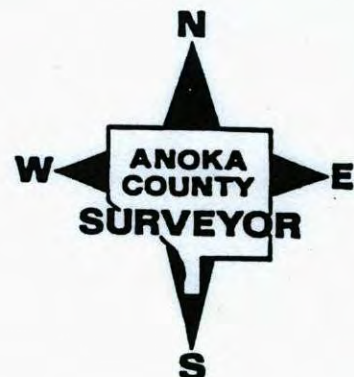
I hereby certify that on the 19 day of July, 1962, I found the described corner which was evidenced by Cast Iron monument re construction

and I further certify that to perpetuate the location of said corner, I did, at the exact location thereof, place a permanent marker consisting of Cast Iron monument DOWN 1.5'. 4' WEST OF CENTER LINE

which reference or witness monuments are located in the manner following:



Revised date	Revised date	Revised date
7-19-62	7-12-07	
6-7-73		
8-10-76		
7-14-82		
8-6-85		
8-21-89		
8-11-95		



# CERTIFICATE OF LOCATION OF GOVERNMENT CORNER

County of Anoka

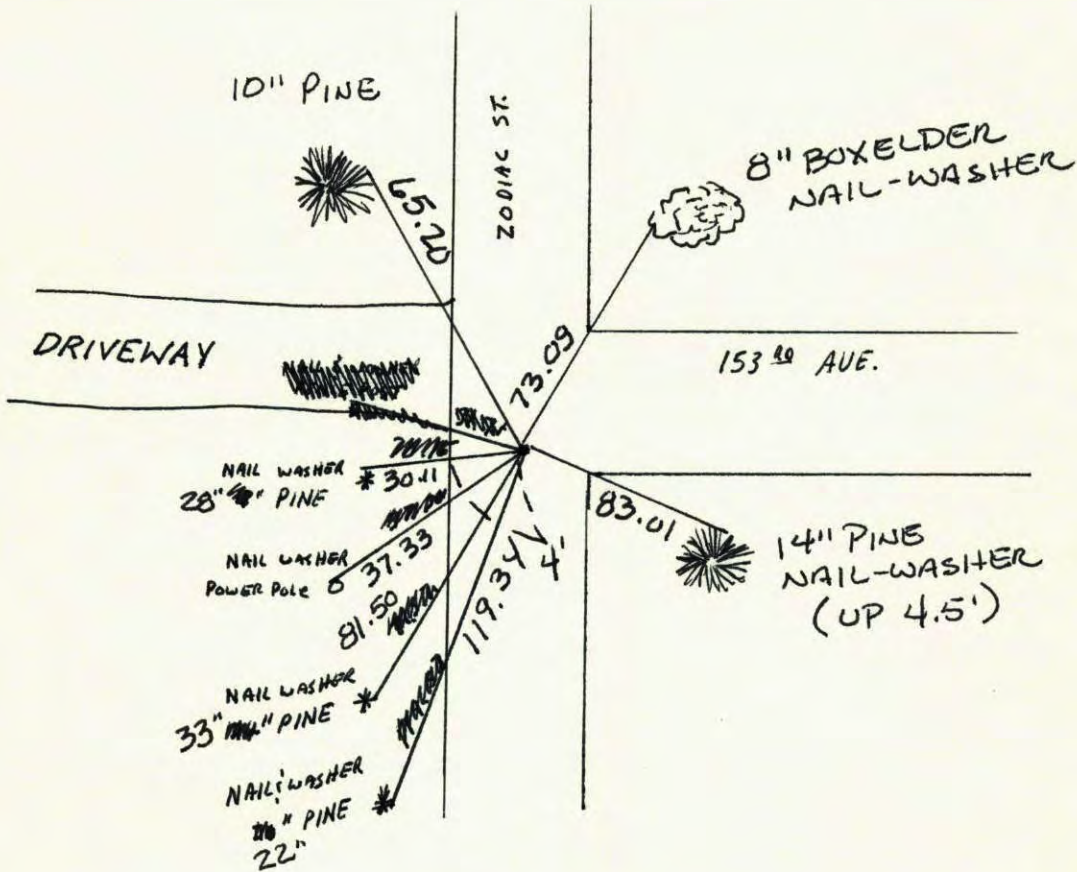
State of Minnesota

EAST ONE QUARTER Corner of Sec. 20 Township 32 Range 22

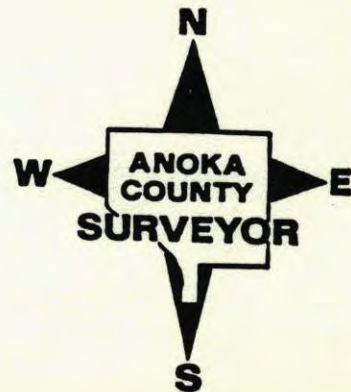
I hereby certify that on the 19 day of July, 1962, I found the described corner which was evidenced by Cast wrought iron structure ties

and I further certify that to perpetuate the location of said corner, I did, at the exact location thereof, place a permanent marker consisting of Cast Iron monument  
DOWN 1.5'. 4' ± WEST OF CENTER LINE

which reference or witness monuments are located in the manner following:

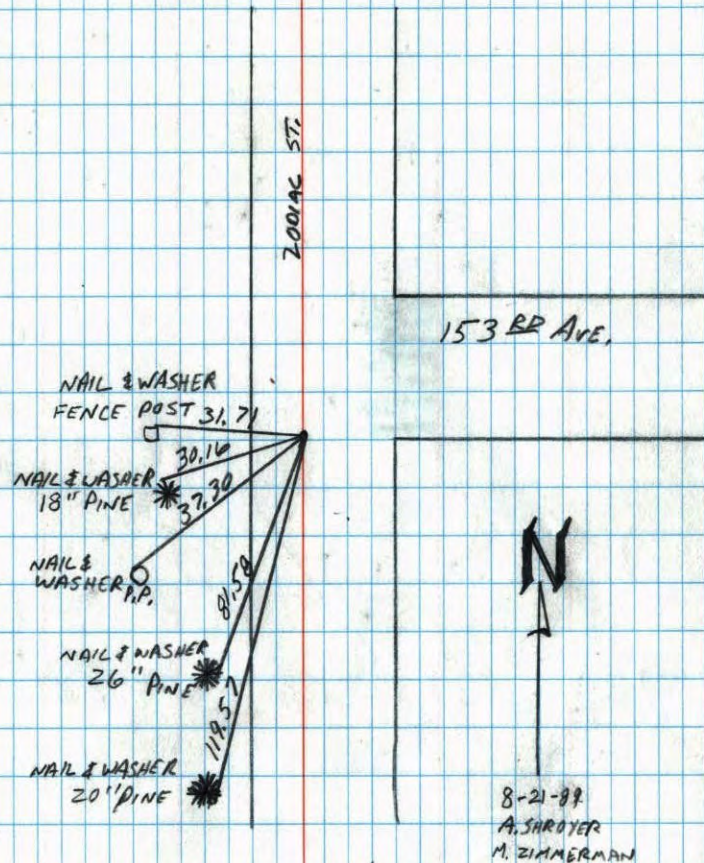


Revised date	Revised date	Revised date
7-19-62	7-12-07	
6-7-73		
8-10-76		
7-14-82		
8-6-85		
8-21-89		
8-11-95		



EAST 1/4 CORNER SEC. 20 T32 R22

RETIED CAST IRON MONUMENT.



E 1/4 Cor. Sec. 20-T32-R22

Cast Iron Monument in place down 0.3'±

July 19, 1962

J. Oliver

M.D. Anderson

R. Carlson

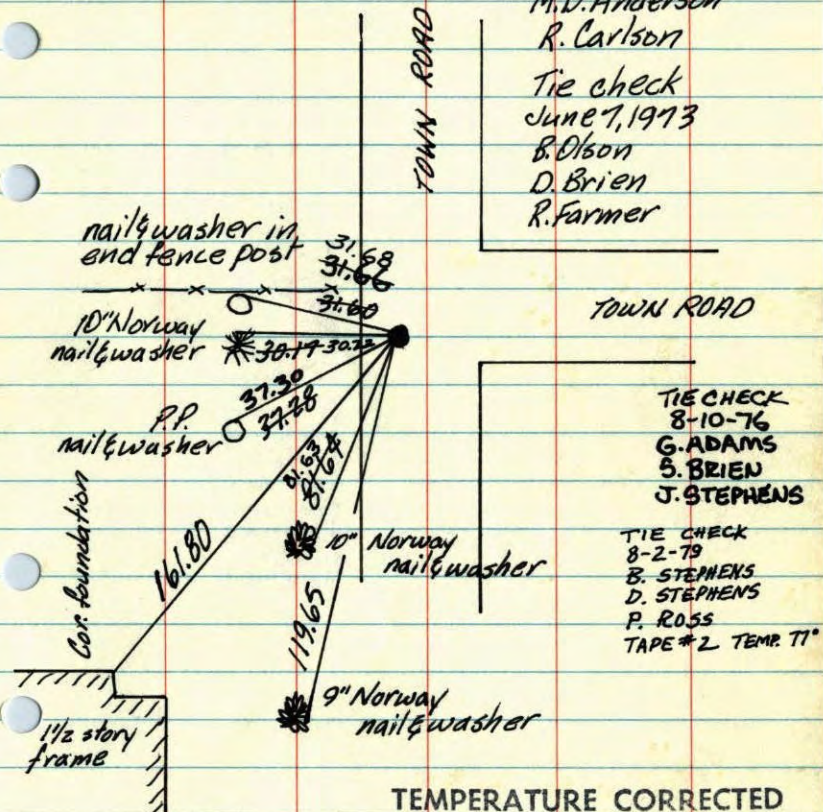
Tie check

June 7, 1973

B. Olson

D. Brien

R. Farmer

TEMPERATURE CORRECTED  
AND HORIZONTALLY  
TAPED MEASUREMENTSROLAND W. ANDERSON  
COUNTY SURVEYOR  
ANOKA COUNTY, MINNESOTA

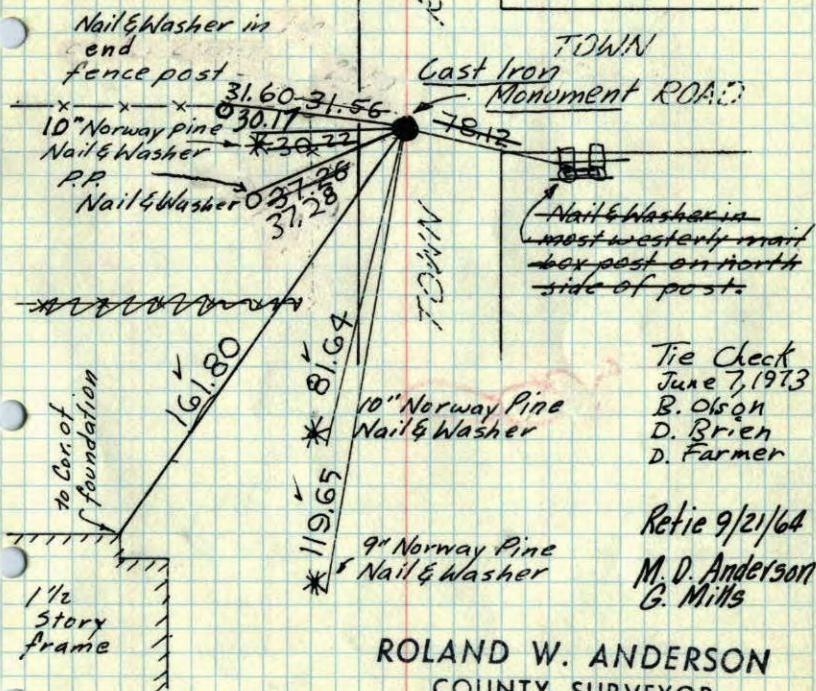
E 1/4 Cor. Sec. 20-32-22

Set Cast Iron Monument - down 0.3'

Set from Reconstruction of old Cartwright ties.

Tie Check  
June 30, 1970  
D. Powell  
R. Brien  
W. Westlander

July 19, 1962

J. Oliver  
M.D. Anderson  
R. CarlsonTie Check  
June 7, 1973  
B. Olson  
D. Brien  
D. FarmerRetie 9/21/64  
M. D. Anderson  
G. Mills

ROLAND W. ANDERSON  
COUNTY SURVEYOR  
ANOKA COUNTY, MINNESOTA  
TEMPERATURE CORRECTED  
AND HORIZONTALLY  
TAPED MEASUREMENTS

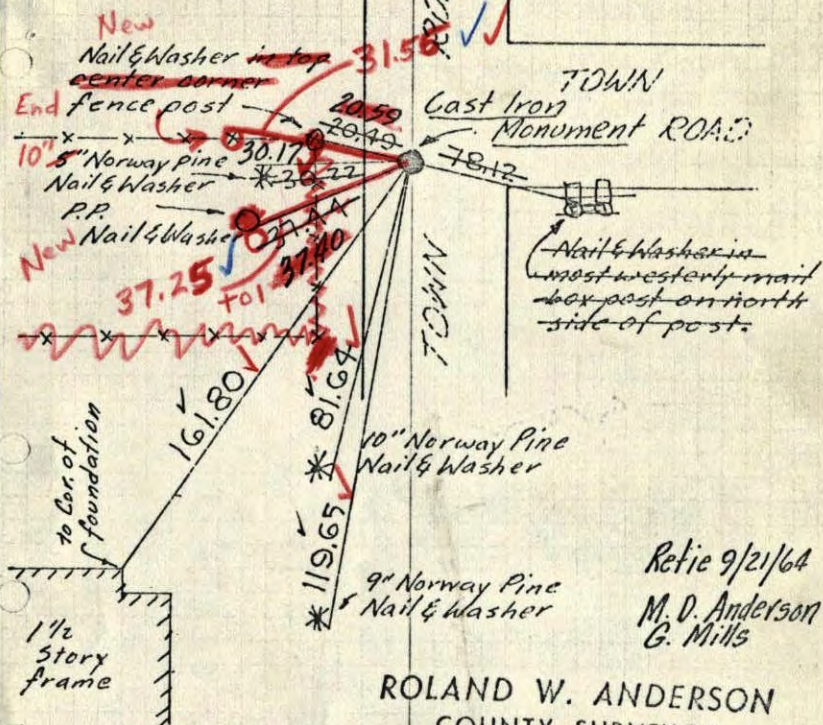
E 1/4 Cor. Sec. 20-32-22

Set Cast Iron Monument - down 0.5'

Set from Reconstruction of old Cartwright ties.

Leaning South 0.07'. Straightened.

July 19, 1962

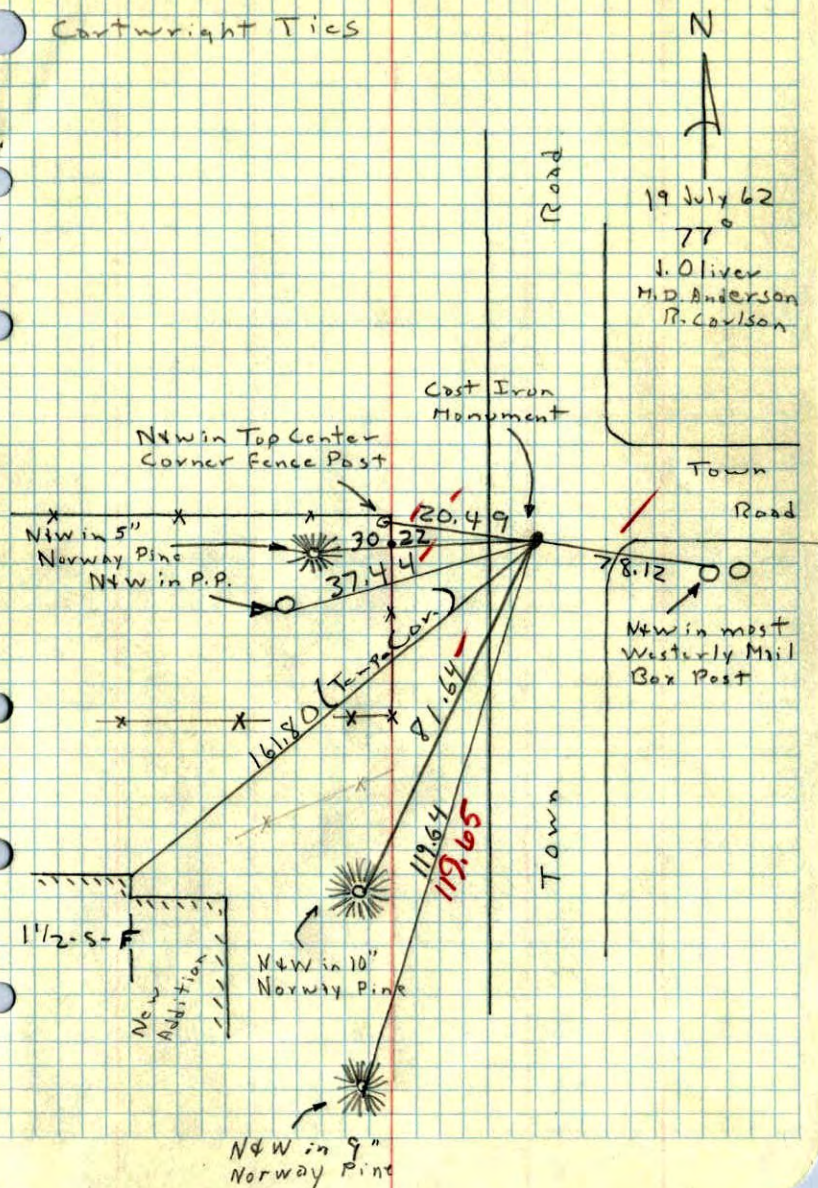
J. Oliver  
M.D. Anderson  
R. CarlsonRetie 9/21/64  
M. D. Anderson  
G. Mills

ROLAND W. ANDERSON  
COUNTY SURVEYOR  
ANOKA COUNTY, MINNESOTA  
TEMPERATURE CORRECTED  
AND HORIZONTALLY  
TAPED MEASUREMENTS

6/30/70  
#10-90°  
D. Powell  
R. Brien  
W. Westlander

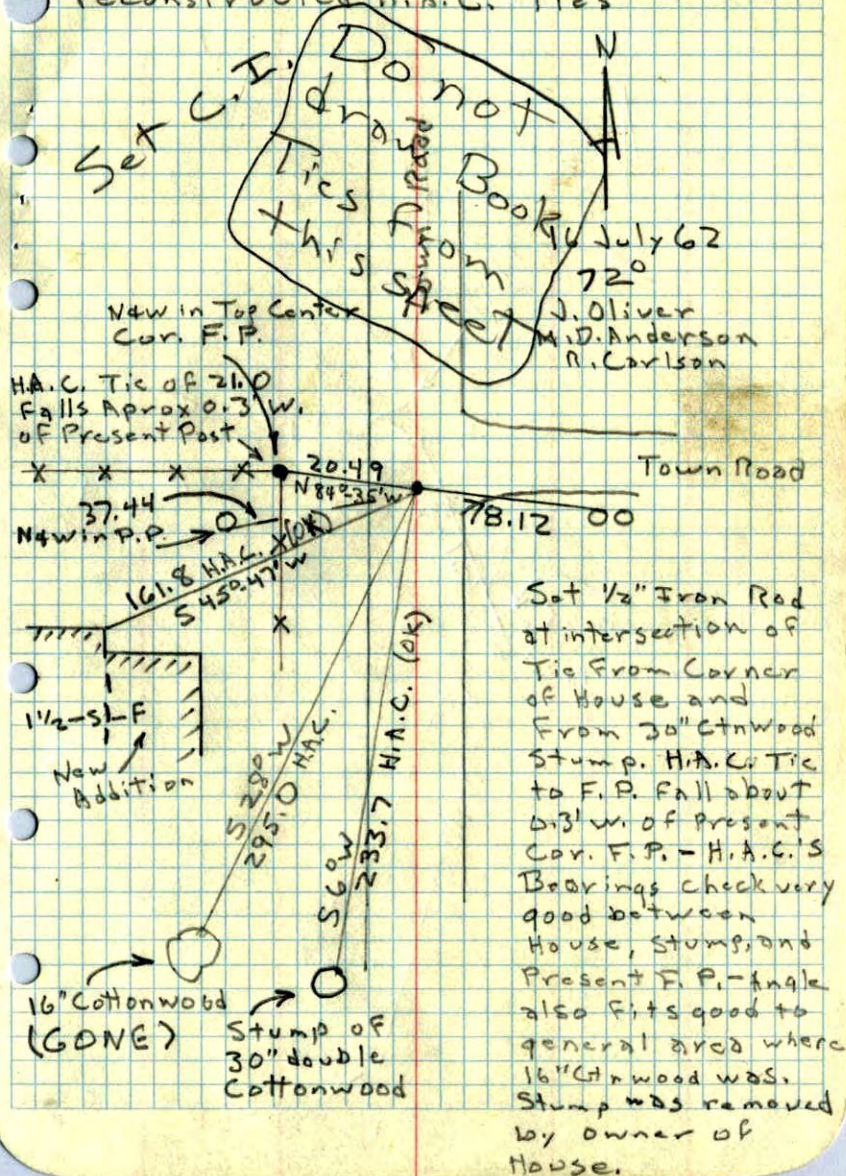
E 1/4 Cor. Sec. 20, T32, R22

Set C.I. Mon down 0.5' From Reconstructed  
Cartwright Ties



E 1/4 Cor. Sec. 20, T32, R22

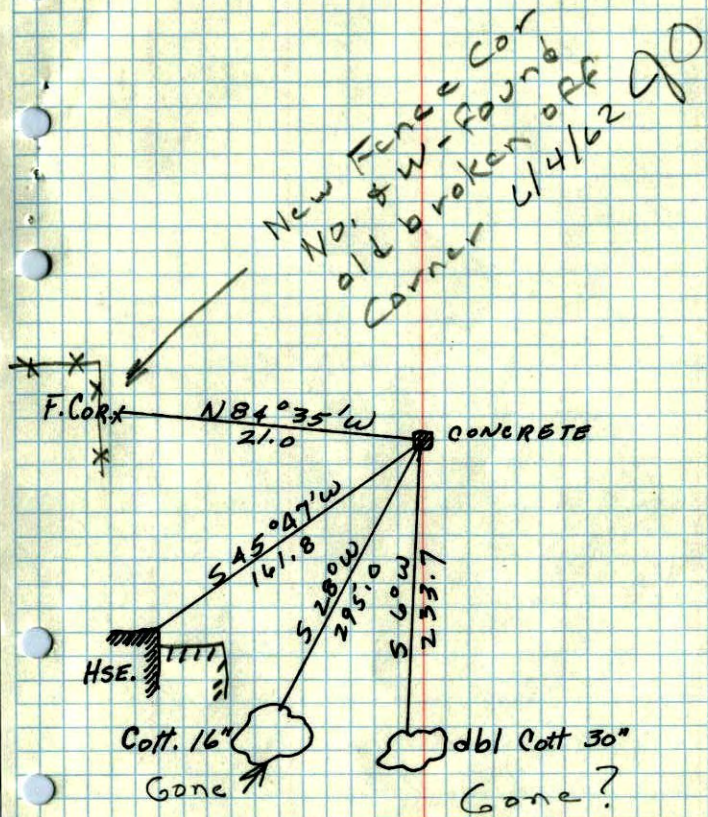
Set 1/2" Iron Rod down 0.2' From  
reconstructed H.A.C. Ties



E 1/4 COR. SEC. 20, T32, R 22

CONC. MON. IN RD

6 ✓



JUNE 10, 1943  
CARTWRIGHT