

# CERTIFICATE OF LOCATION OF GOVERNMENT CORNER

County of Anoka                      State of Minnesota

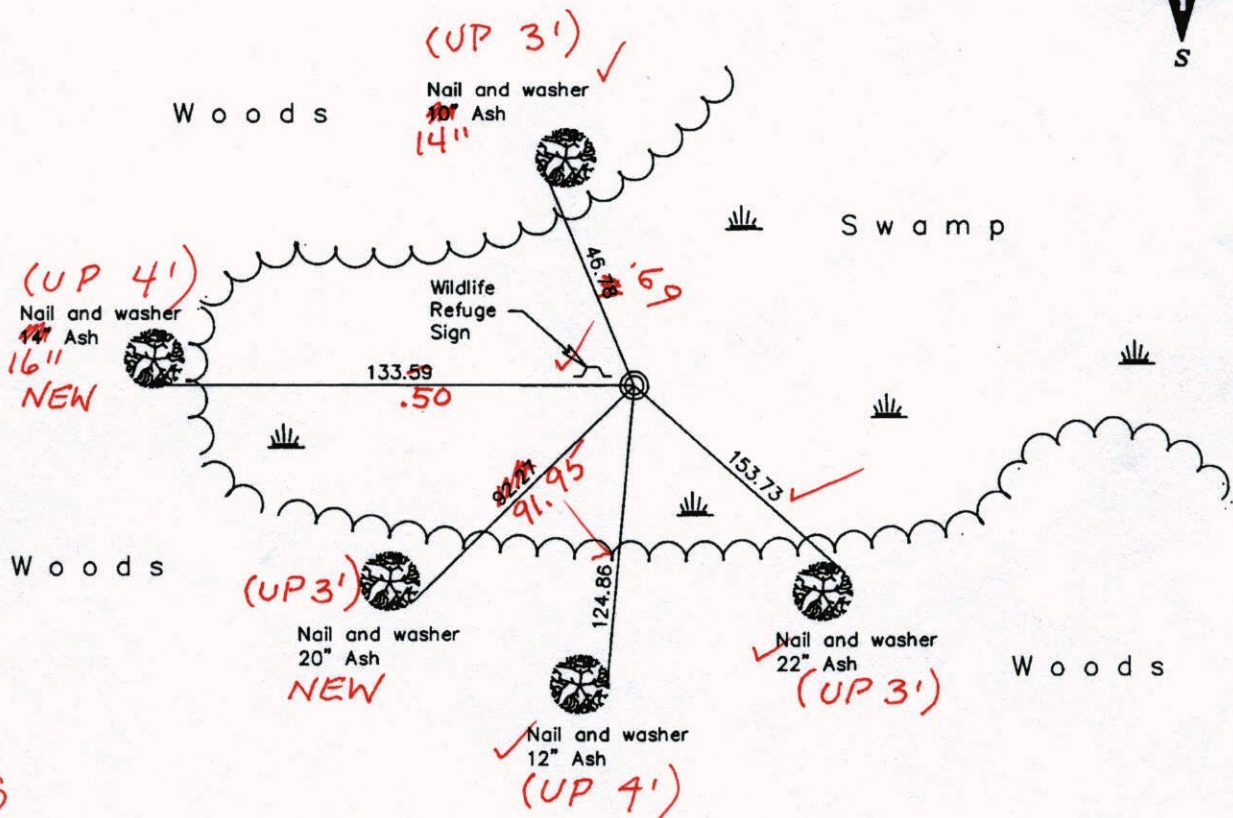
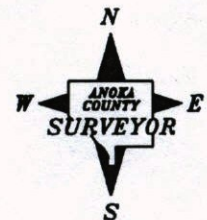
Northeast Corner of Sec. 4 Township 32 Range 22

On the 15th day of March, 1977, the described corner was evidenced by concrete monument

and to perpetuate the location of said corner, at the exact location thereof, a permanent marker was placed consisting of 2" iron pipe (UP 4.5')

AND on the 11th day of December, 2007, said permanent marker was found and the ties were updated.

Updated reference ties are as shown below.



BK-SS  
12-12-14  
TAPED

Revised date

8/13/85
9/1/89
8/14/95
12/11/07

N.A.D. 1983 Coordinates  
(1996 Adjustment)

County Project Coordinates	
Northing	195520.8614
Easting	547834.4900
Date	5/3/05

I hereby certify that this United States public land survey monument record is correct and complete to the best of my knowledge and belief.

*Larry D. Hoium* Date 12/11/07

Larry D. Hoium, Anoka County Surveyor

Minnesota License Number 18165

3D = 108                      N = 195520.9318                      E = 547834.3096



# CERTIFICATE OF LOCATION OF GOVERNMENT CORNER

County of Anoka

State of Minnesota

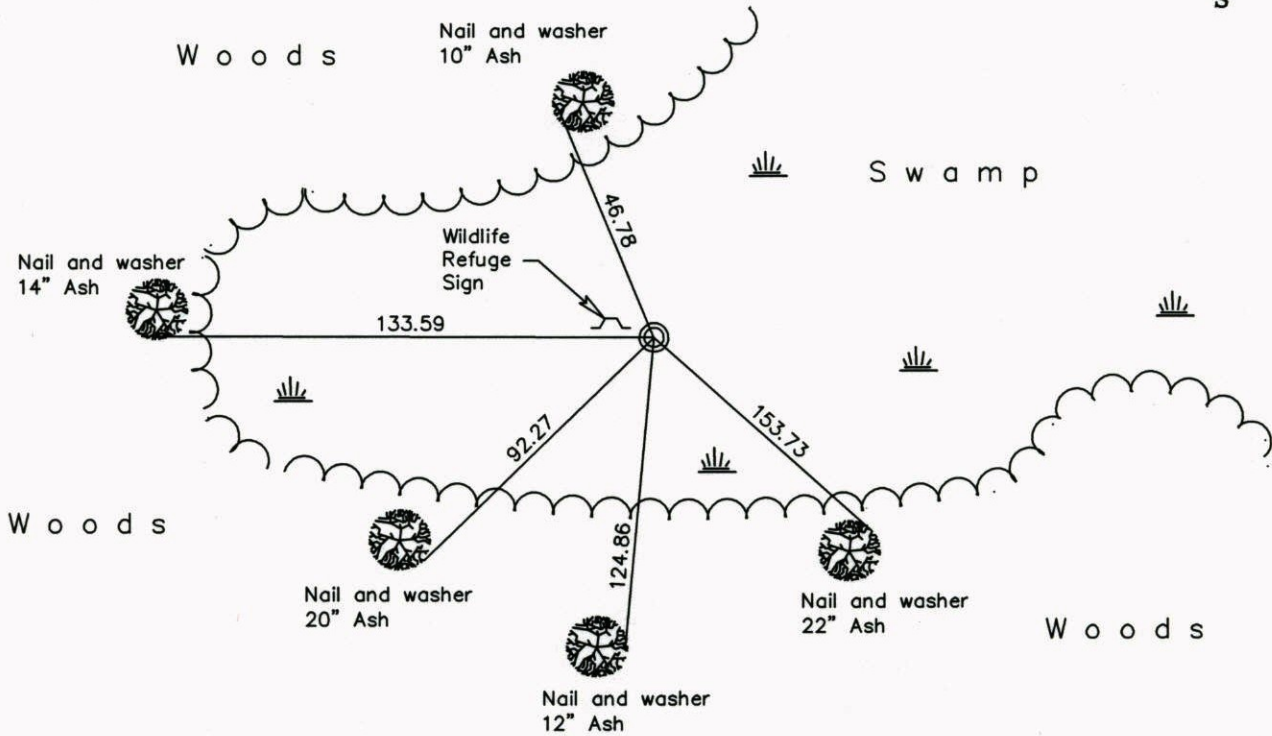
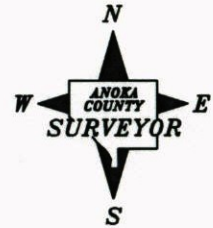
Northeast Corner of Sec. 4 Township 32 Range 22

On the 15th day of March, 1977, the described corner was evidenced by concrete monument

and to perpetuate the location of said corner, at the exact location thereof, a permanent marker was placed consisting of 2" iron pipe

AND on the 11th day of December, 2007, said permanent marker was found and the ties were updated.

Updated reference ties are as shown below.



Revised date

8/13/85
9/1/89
8/14/95
12/11/07

N.A.D. 1983 Coordinates  
(1996 Adjustment)

County Project Coordinates	
Northing	195520.8614
Easting	547834.4900
Date	5/3/05

I hereby certify that this United States public land survey monument record is correct and complete to the best of my knowledge and belief.

*Larry D. Hoium* Date 12/11/07  
Larry D. Hoium, Anoka County Surveyor  
 Minnesota License Number 18165

# CERTIFICATE OF LOCATION OF GOVERNMENT CORNER

County of Anoka

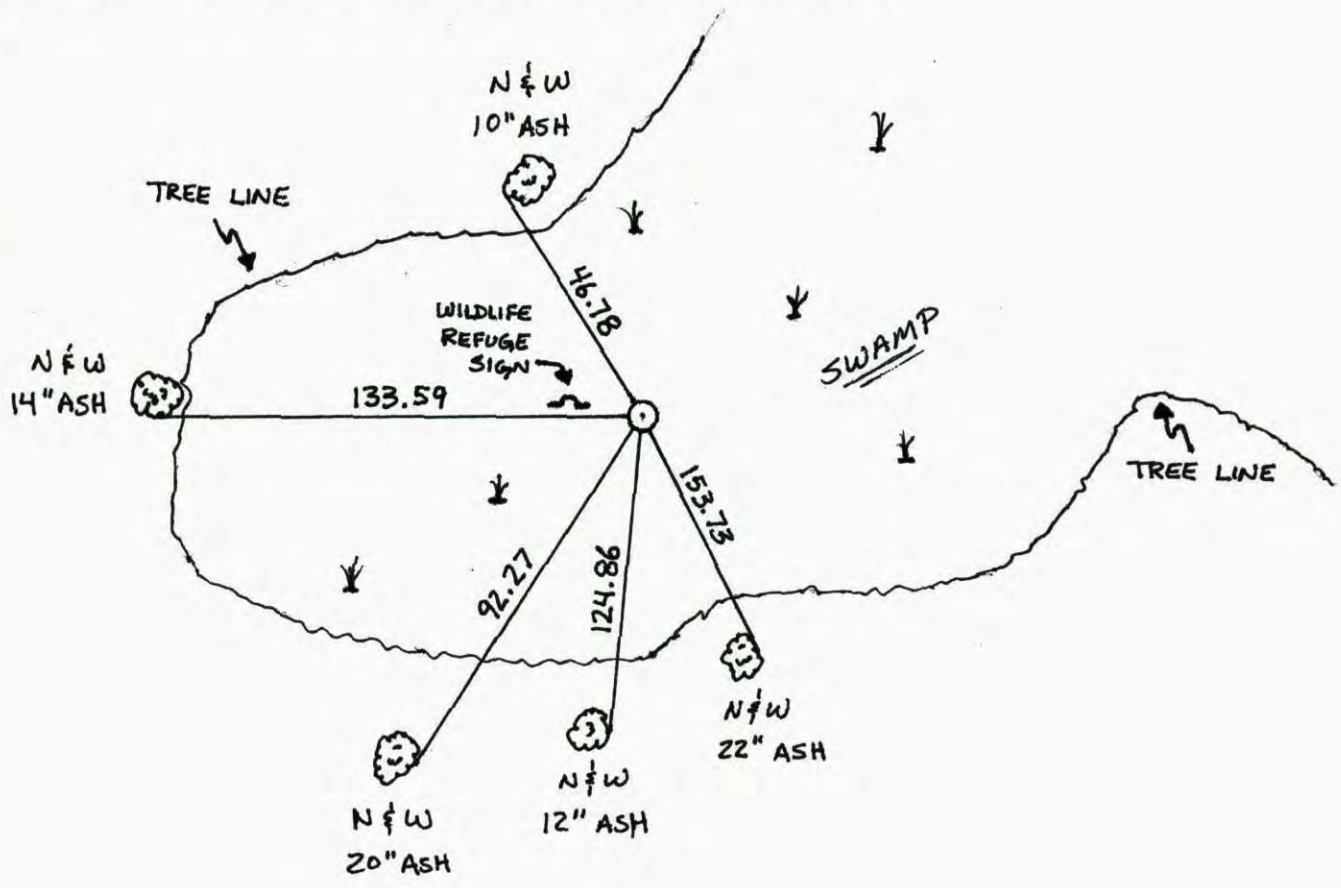
State of Minnesota

NORTHEAST Corner of Sec. 4 Township 32 Range 22

I hereby certify that on the 15 day of MARCH, 19 77, I found the described corner which was evidenced by CONCRETE

and I further certify that to perpetuate the location of said corner, I did, at the exact location thereof, place a permanent marker consisting of 2" IRON PIPE

which reference or witness monuments are located in the manner following:



Revised date	Revised date	Revised date
8-13-85 DR		
9-1-89 AS		
8-14-95		
12-11-07		





# CERTIFICATE OF LOCATION OF GOVERNMENT CORNER

County of Anoka

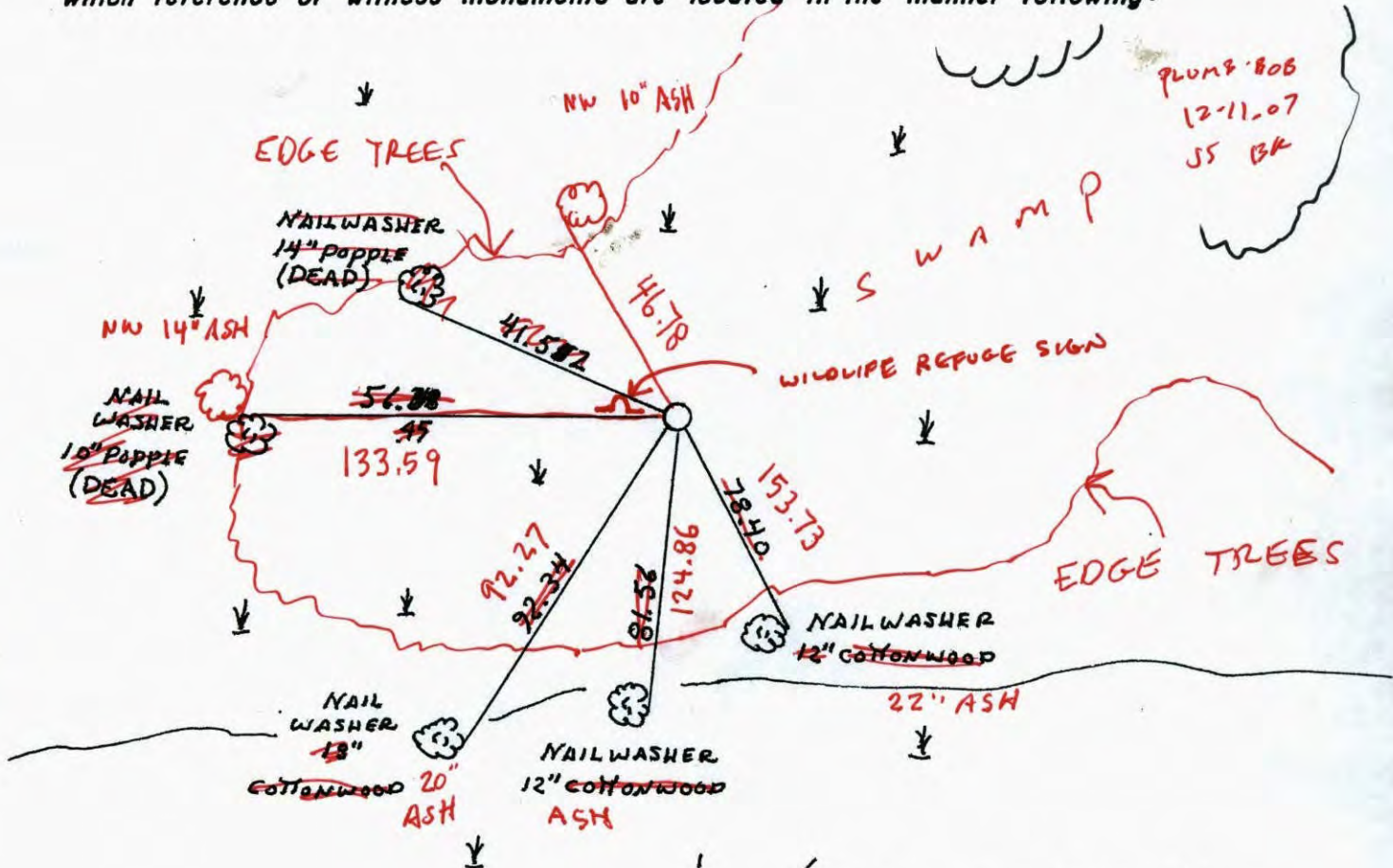
State of Minnesota

NORTHEAST Corner of Sec. 4 Township 32 Range 22

I hereby certify that on the 15 day of MARCH, 1977, I found the described corner which was evidenced by CONCRETE

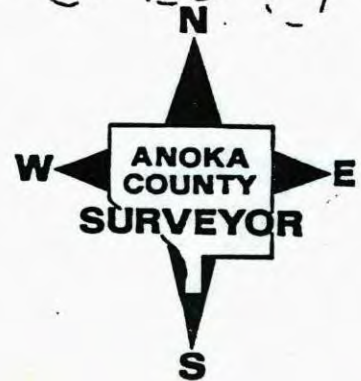
and I further certify that to perpetuate the location of said corner, I did, at the exact location thereof, place a permanent marker consisting of ~~THE OLD MARKER~~  
2" IRON PIPE

which reference or witness monuments are located in the manner following:



WOODS

Revised date	Revised date	Revised date
8-13-85 DR		
9-1-89 AS.		
8-14-95		

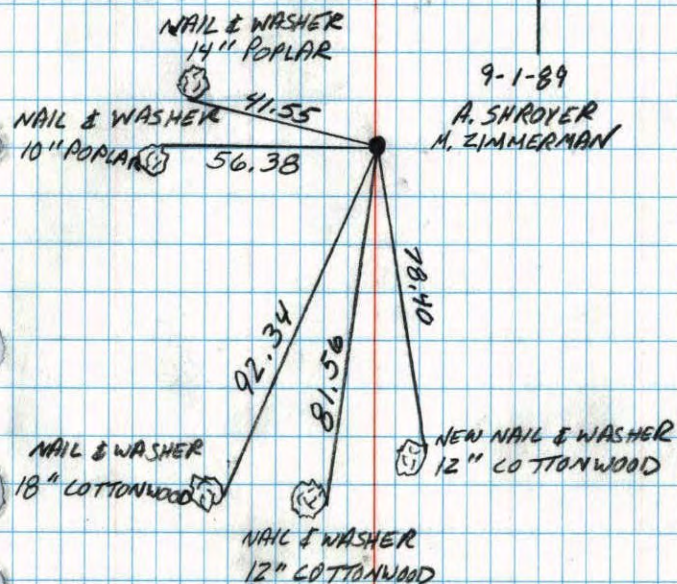


808



NORTHEAST CORNER SEC. 4 T32 R22

RETIED RED & WHITE IRON PIPE



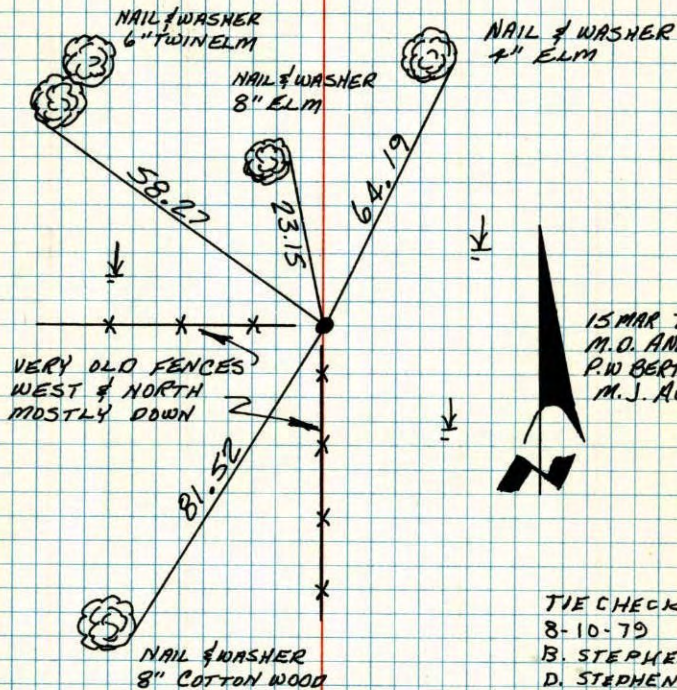
NO. 446

TELETYPE

N.E. CORNER, SECTION 4-T32-R22

FOUND CONCRETE MONUMENT IN POOR CONDITION.

REPLACED WITH RED & WHITE IRON PIPE. PLACED WARNING SIGN ON PIPE.



VERY OLD FENCES WEST & NORTH MOSTLY DOWN

TIE CHECK  
8-10-79  
B. STEPHENS  
D. STEPHENS  
P. ROSS

TEMPERATURE CORRECTED  
AND HORIZONTALLY  
TAPED MEASUREMENTS

ROLAND W. ANDERSON  
COUNTY SURVEYOR  
ANOKA COUNTY, MINNESOTA



N.E. Cor. Sec. 4 - T32 - R22

Found conc Mon. in poor condition

Replaced with Red & White Iron pipe

placed warning sign on pipe

