

# CERTIFICATE OF LOCATION OF GOVERNMENT CORNER

County of Anoka

State of Minnesota

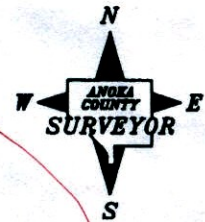
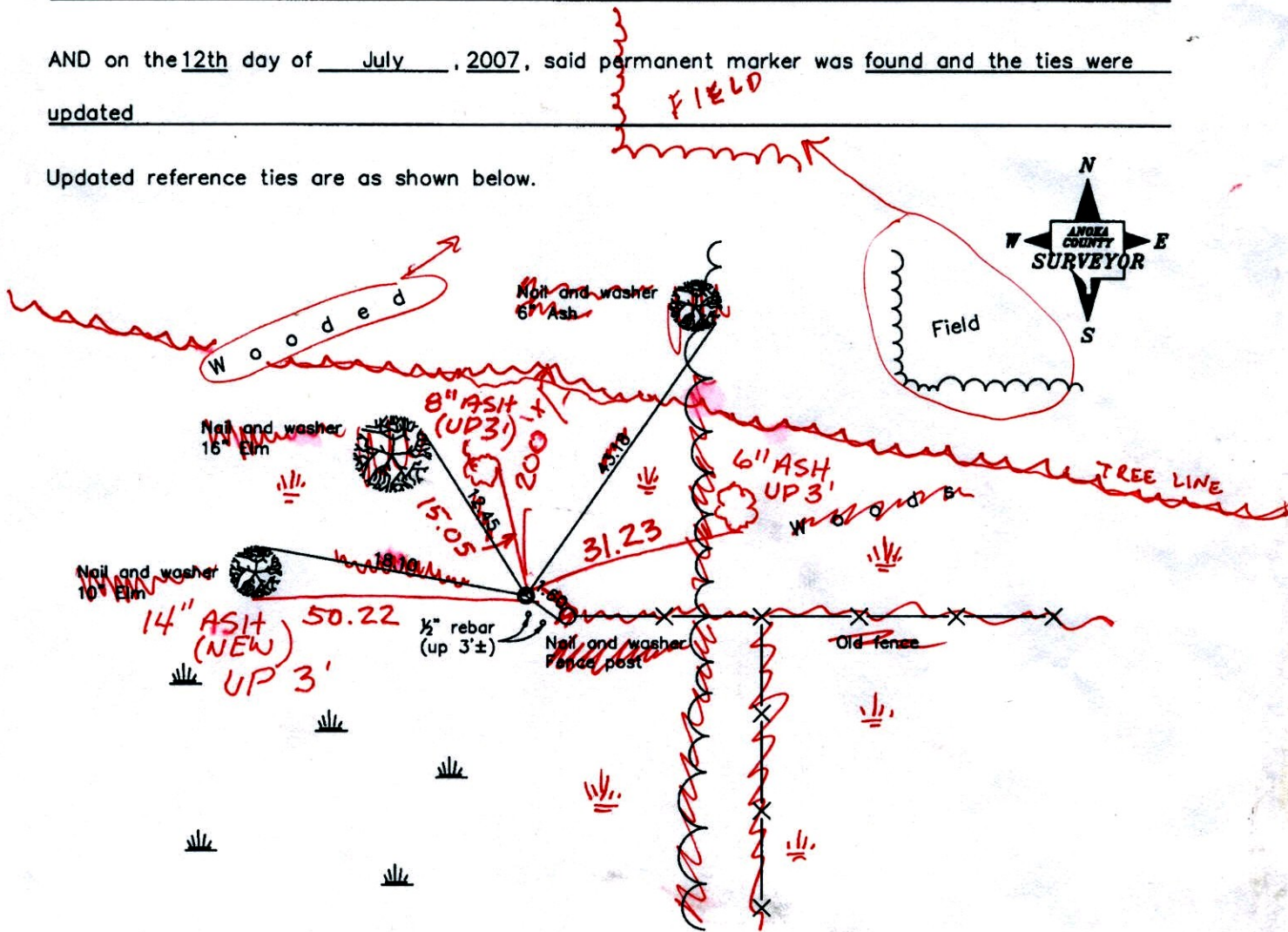
East 1/4 Corner of Sec. 23 Township 32 Range 22

On the 17th day of February, 1983, the described corner was evidenced by a 1/2" iron pipe

and to perpetuate the location of said corner, at the exact location thereof, a permanent marker was placed consisting of the same 1/2" iron pipe

AND on the 12th day of July, 2007, said permanent marker was found and the ties were updated

Updated reference ties are as shown below.



12-15-14  
BK-SS  
TAPED  
VRS

Revised date
7/02/90
8/21/95
7/12/07

N.A.D. 1983 Coordinates (1996 Adjustment)	
County Project Coordinates	
Northing	177234.3682
Easting	558438.3257
Date	1/18/06

I hereby certify that this United States public land survey monument record is correct and complete to the best of my knowledge and belief.

*Larry D. Hoium* Date 7/12/07

Larry D. Hoium, Anoka County Surveyor

Minnesota License Number 18165

3D=0.07      N=177234.4352      E=558438.2128

# CERTIFICATE OF LOCATION OF GOVERNMENT CORNER

County of Anoka

State of Minnesota

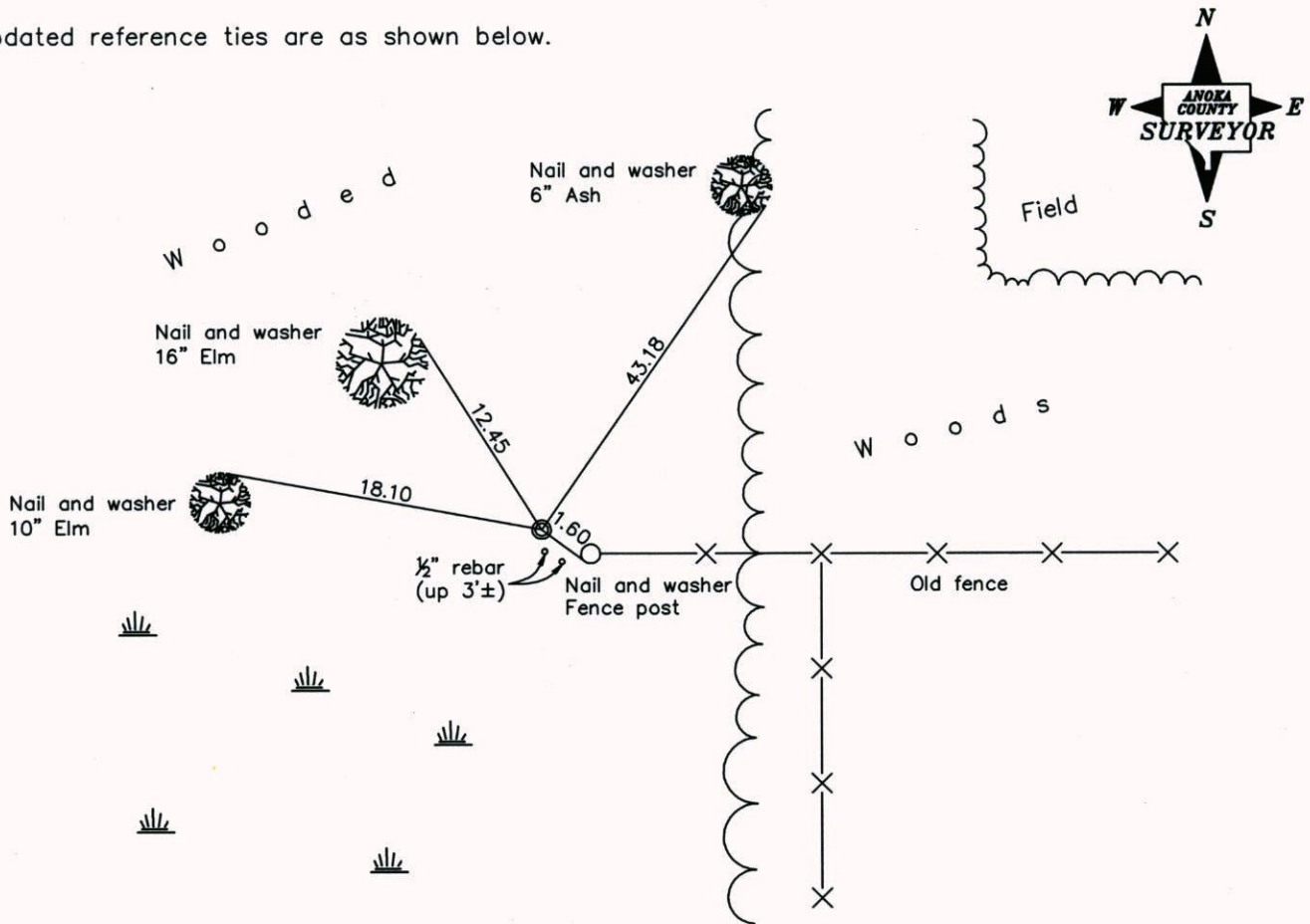
East 1/4 Corner of Sec. 23 Township 32 Range 22

On the 17th day of February, 1983, the described corner was evidenced by a 1/2" iron pipe

and to perpetuate the location of said corner, at the exact location thereof, a permanent marker was placed consisting of the same 1/2" iron pipe

AND on the 12th day of July, 2007, said permanent marker was found and the ties were updated

Updated reference ties are as shown below.



**Revised date**

7/02/90
8/21/95
7/12/07

**N.A.D. 1983 Coordinates  
(1996 Adjustment)**

County Project Coordinates
Northing <u>177234.3682</u>
Easting <u>558438.3257</u>
Date <u>1/18/06</u>

I hereby certify that this United States public land survey monument record is correct and complete to the best of my knowledge and belief.

*Larry D. Hoium* Date 7/12/07

\_\_\_\_\_  
Larry D. Hoium, Anoka County Surveyor

Minnesota License Number 18165



# CERTIFICATE OF LOCATION OF GOVERNMENT CORNER

County of Anoka

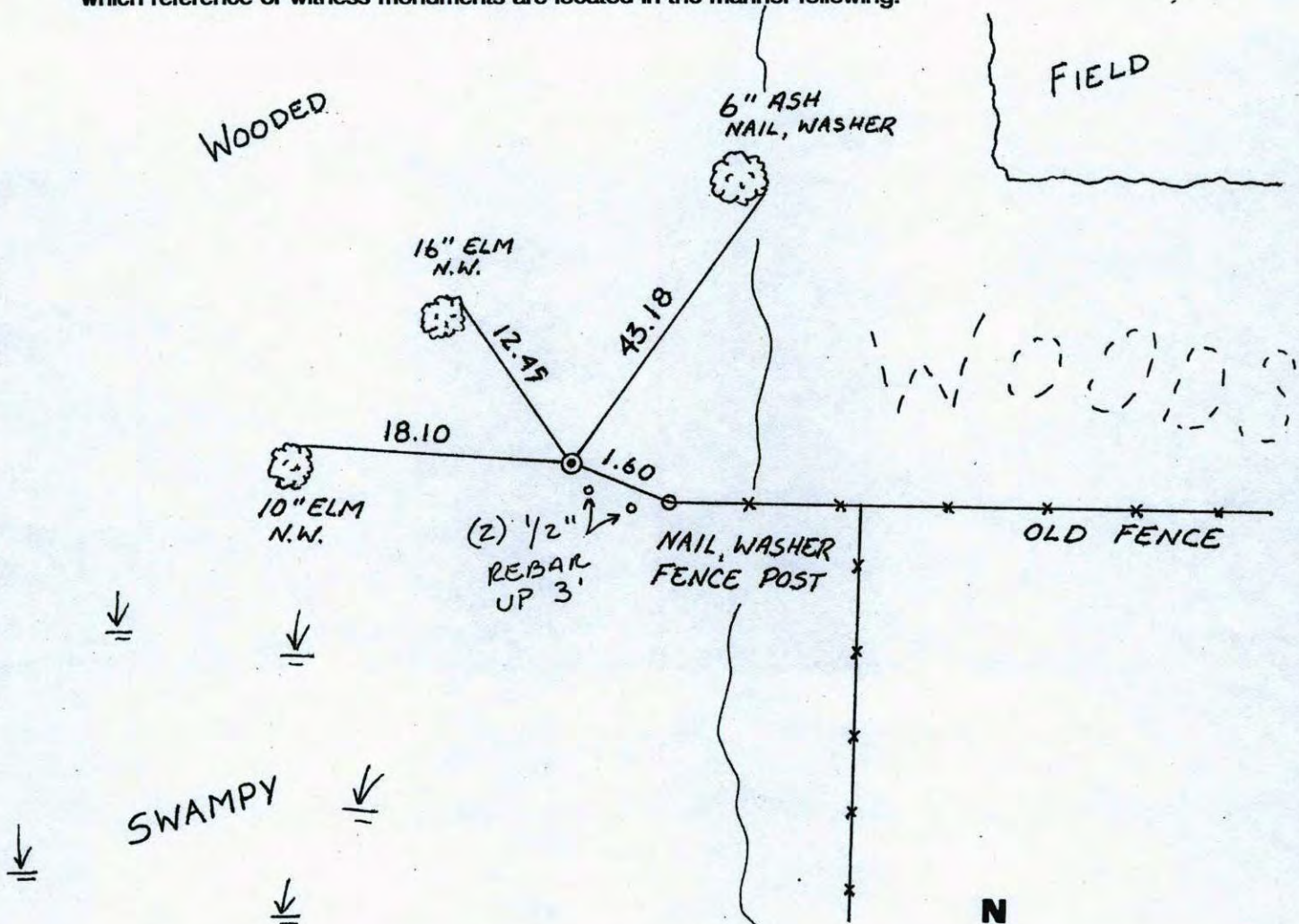
State of Minnesota

EAST QTR. Corner of Sec. 23 Township 32 Range 22

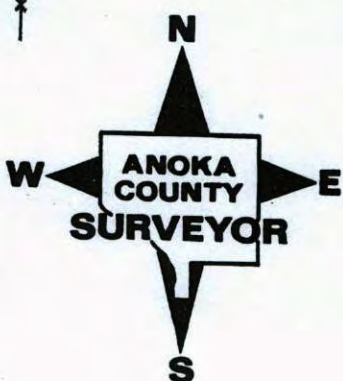
I hereby certify that on the 17 day of FEB., 1983, I found the described corner which was evidenced by 1/2" I.P.

and I further certify that to perpetuate the location of said corner, I did, at the exact location thereof, place a permanent marker consisting of 1/2" I.P.

which reference or witness monuments are located in the manner following:



Revised date	Revised date	Revised date
7-2-90		
8-21-95		
7-12-07		





# CERTIFICATE OF LOCATION OF GOVERNMENT CORNER

County of Anoka

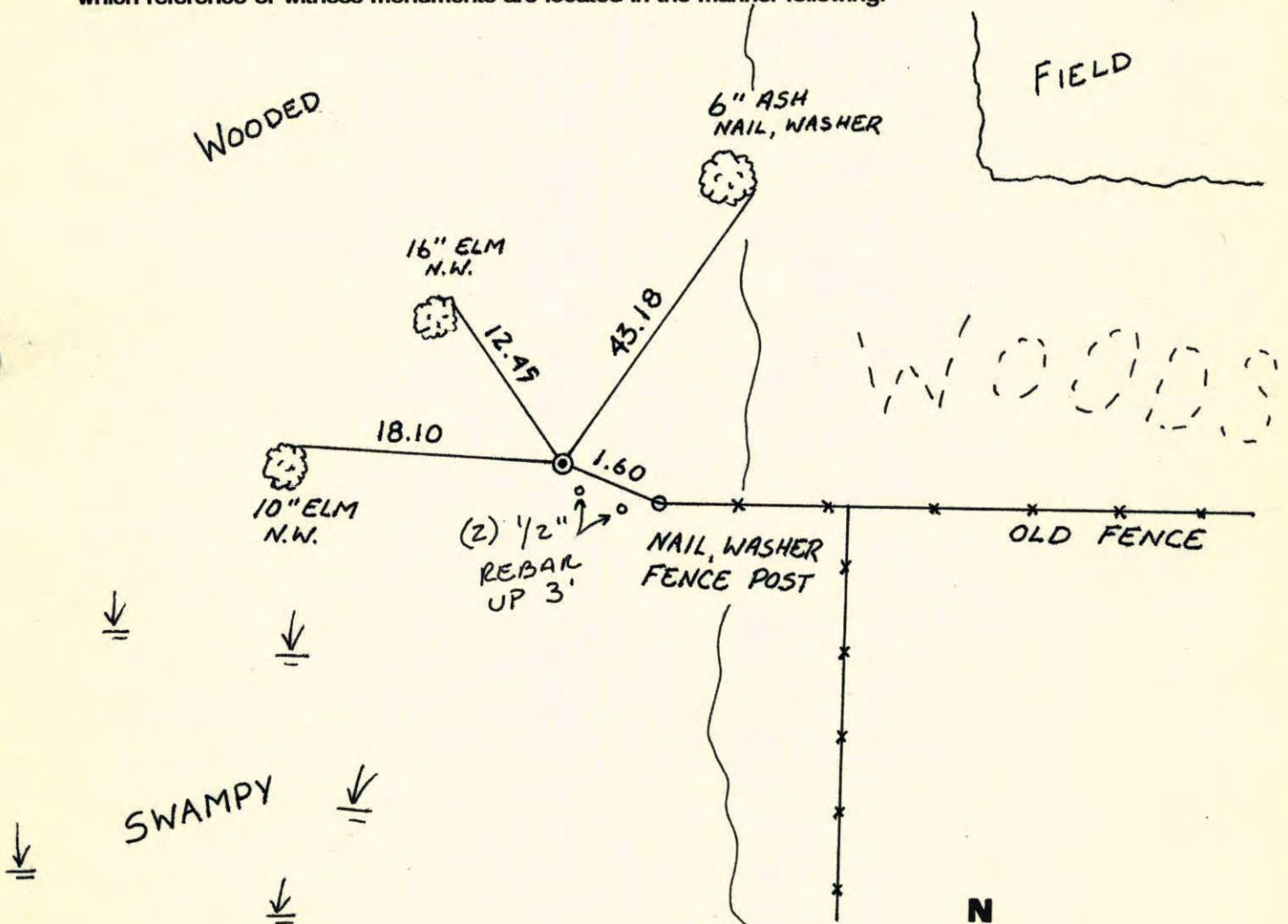
State of Minnesota

EAST QTR. Corner of Sec. 23 Township 32 Range 22

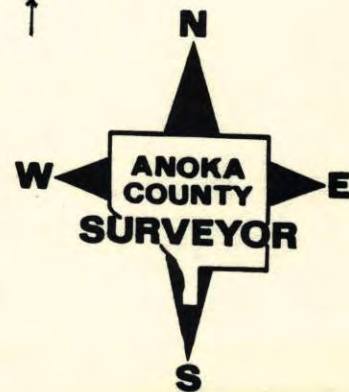
I hereby certify that on the 17 day of FEB., 1983, I found the described corner which was evidenced by 1/2" I.P.

and I further certify that to perpetuate the location of said corner, I did, at the exact location thereof, place a permanent marker consisting of 1/2" I.P.

which reference or witness monuments are located in the manner following:



Revised date	Revised date	Revised date
7-2-90		
8-21-95		
7-12-07		





EAST 1/2 Corner sec. 23

T 32 R 22

Retied 1/2" IRON PIPE



7-2-96  
D. Kleisy  
M. Zimmerman



woods

NAIL WASHER  
7" ASH

NAIL WASHER  
16" ELM

43.18

NAIL WASHER  
10" ELM

13.10

NAIL WASHER  
FENCE POST

1.60

SWAMP

NAIL WASHER  
10" ELM

64.24

OLD  
FENCE

EAST 1/4 CORNER SECTION 23 T32 R22

FOUND AND TIED 1/2" IRON PIPE

FIELD

WOODED

N+W  
6" ASH

N+W  
12" ELM

12.40

23.10

N+W  
6" ELM

18.12

N+W  
F.P.

1.60

300'

OLD  
FENCE

SWA

N+W  
8" ELM

MPY

200' 30"  
2:17-83  
H. LARSON  
B. GUETZKO  
D. NAGLAK