

CERTIFICATE OF LOCATION OF GOVERNMENT CORNER

County of Anoka

State of Minnesota

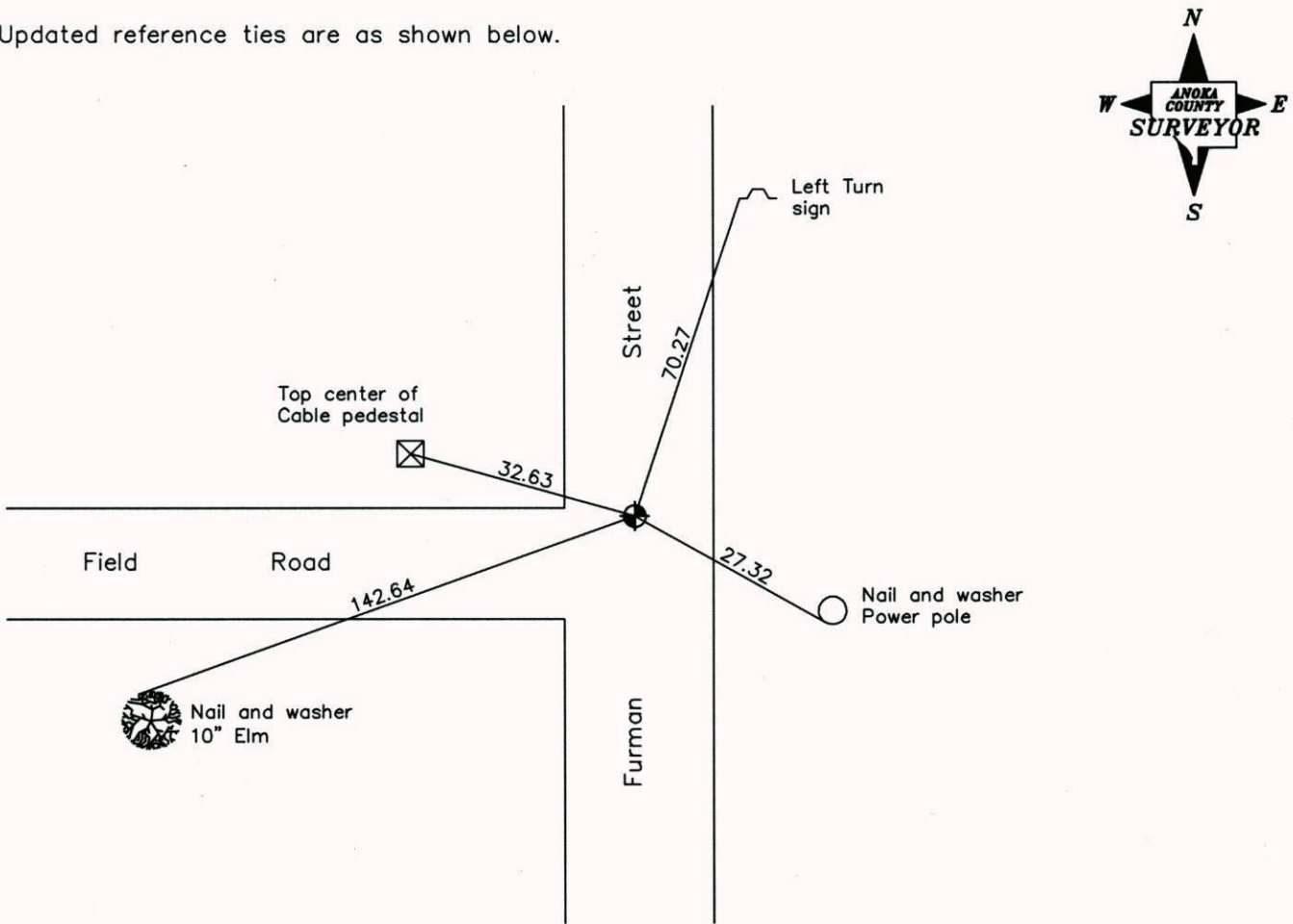
Southeast Corner of Sec. 22 Township 32 Range 22

On the 6th day of December, 1963, the described corner was evidenced by a 1" axle shaft

and to perpetuate the location of said corner, at the exact location thereof, a permanent marker was placed consisting of a cast iron monument

AND on the ___ day of _____, _____, said permanent marker was _____

Updated reference ties are as shown below.



Revised date
8/24/89
8/18/95

N.A.D. 1983 Coordinates (1996 Adjustment)	
County Project Coordinates	
Northing	<u>174727.6212</u>
Easting	<u>553196.0997</u>
Date	<u>6/25/03</u>

I hereby certify that this United States public land survey monument record is correct and complete to the best of my knowledge and belief.

_____, Date _____

_____, Anoka County Surveyor

Minnesota License Number _____

CERTIFICATE OF LOCATION OF GOVERNMENT CORNER

County of Anoka

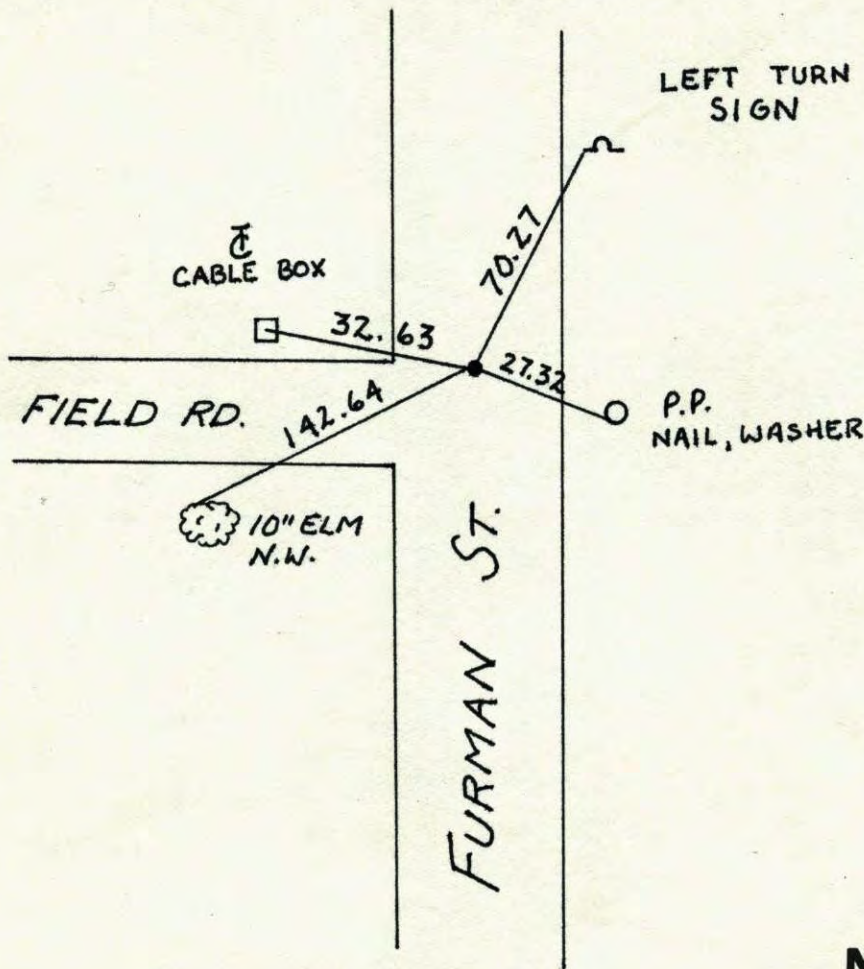
State of Minnesota

Southeast Corner of Sec. 22 Township 32 Range 22

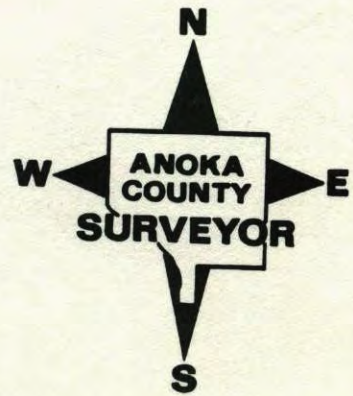
I hereby certify that on the 6 day of DEC., 1963, I found the described corner which was evidenced by 1" AXLE SHAFT

and I further certify that to perpetuate the location of said corner, I did, at the exact location thereof, place a permanent marker consisting of CAST IRON MON.

which reference or witness monuments are located in the manner following:

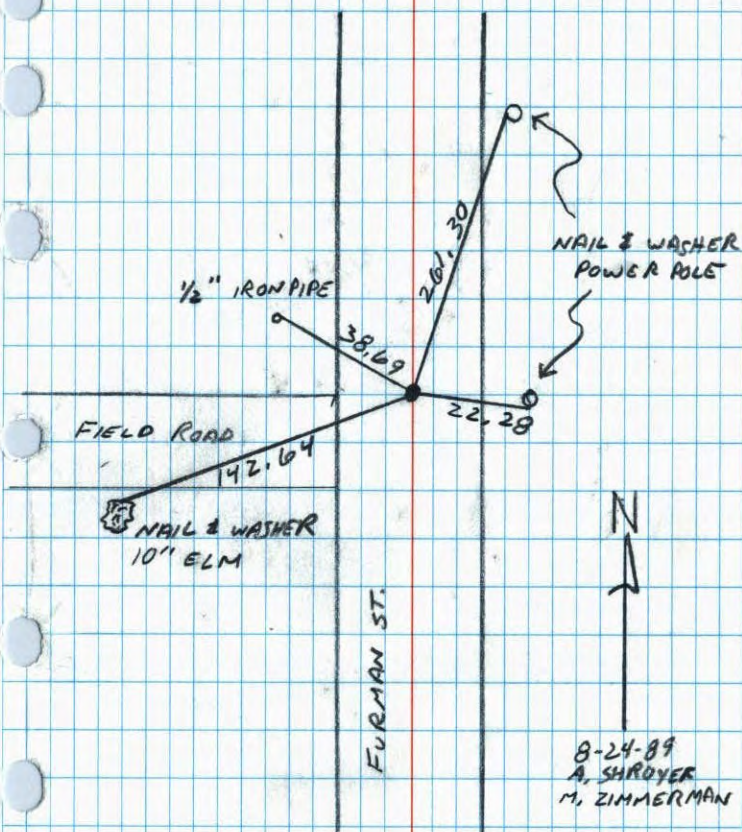


Revised date	Revised date	Revised date
8-24-89		
8-18-95		



SOUTHEAST COR. SEC. 22 T32 R22

RETIRED CAST IRON MONUMENT.



SE Cor. Sec. 22, T32, R22

Found 1" Iron Bar down 1' From Don Hults ties.
Replaced 1" Axle Shaft with Cast Iron Monument
down 0.54.

Sept. 22, 1969

D. Powell

R. Olson

6 Dec. 63

J. Oliver

M.D. Anderson

E. Madson

Tie check

June 8, 1973

J. Boettcher

D. Brien

R. Farmer

TIE CHECK 8-2-79

B. STEPHENS

D. STEPHENS

22.27 P. ROSS

22.26 88" TAPE #2

Nail and Washer

in P.P. and T.P.

(NEW POWER POLE)

Nail and washer
in end Fence Post

23.47

23.48

23.47

21.83

21.83

21.83

21.83

21.83

21.83

21.83

21.83

21.83

21.83

21.83

21.83

21.83

21.83

21.83

21.83

21.83

21.83

21.83

21.83

21.83

21.83

21.83

21.83

21.83

21.83

21.83

21.83

21.83

21.83

21.83

21.83

21.83

21.83

21.83

21.83

21.83

21.83

21.83

21.83

Private Rd.

DOWN

1/2" hole in end of
Concrete Culvert

Tie Check

June 8, 1973

B. Olson

D. Brien

J. Boettcher

D. Farmer

TIE CHECK 8-11-76

G. ADAMS

S. BRIEN

J. STEPHENS

TEMPERATURE CORRECTED

AND HORIZONTALLY

TAPED MEASUREMENTS

Town

Corner
Foundation

1 1/2" S-F

ROLAND W. ANDERSON
COUNTY SURVEYOR
ANOKA COUNTY, MINNESOTA

SX

SE Cor. Sec. 22, T32, R22

Found 1" Iron Bar down 1' From Don Hults ties.
Set C.I. Man. down 0.5'± in place of axle shaft



6 Dec. 63

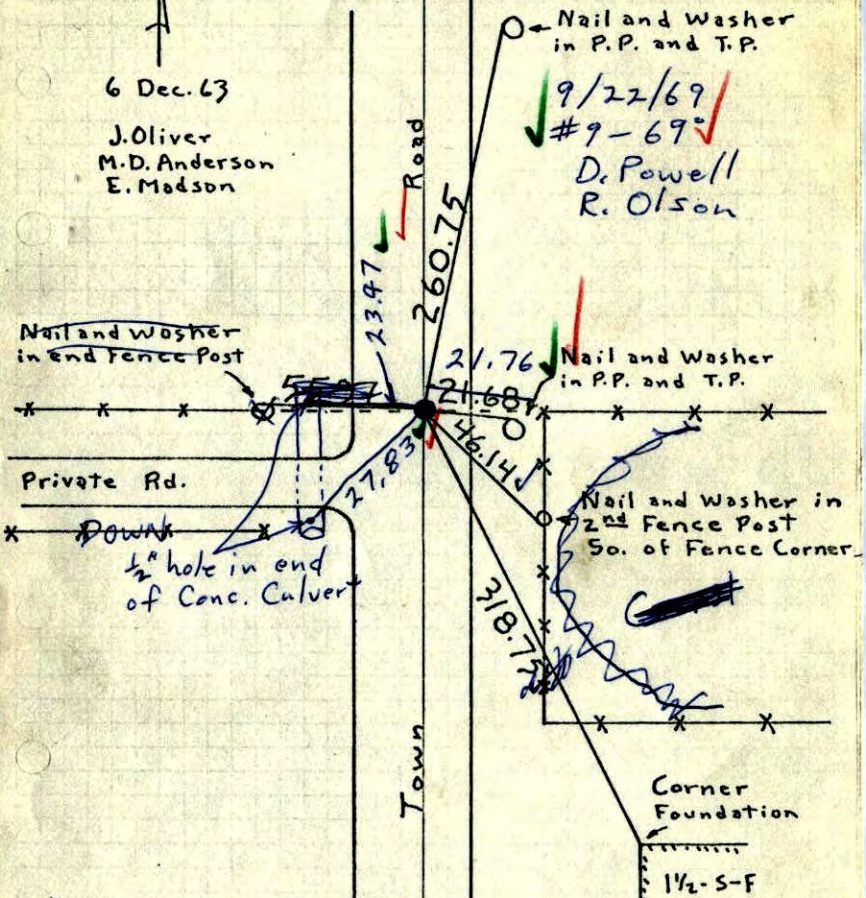
J. Oliver
M.D. Anderson
E. Madson

Nail and Washer in P.P. and T.P.

9/22/69

#9-69

D. Powell
R. Olson



TEMPERATURE CORRECTED
AND HORIZONTALLY
TAPED MEASUREMENTS

ROLAND W. ANDERSON
COUNTY SURVEYOR
ANOKA COUNTY, MINNESOTA

SE Cor. Sec. 22, T32, R22

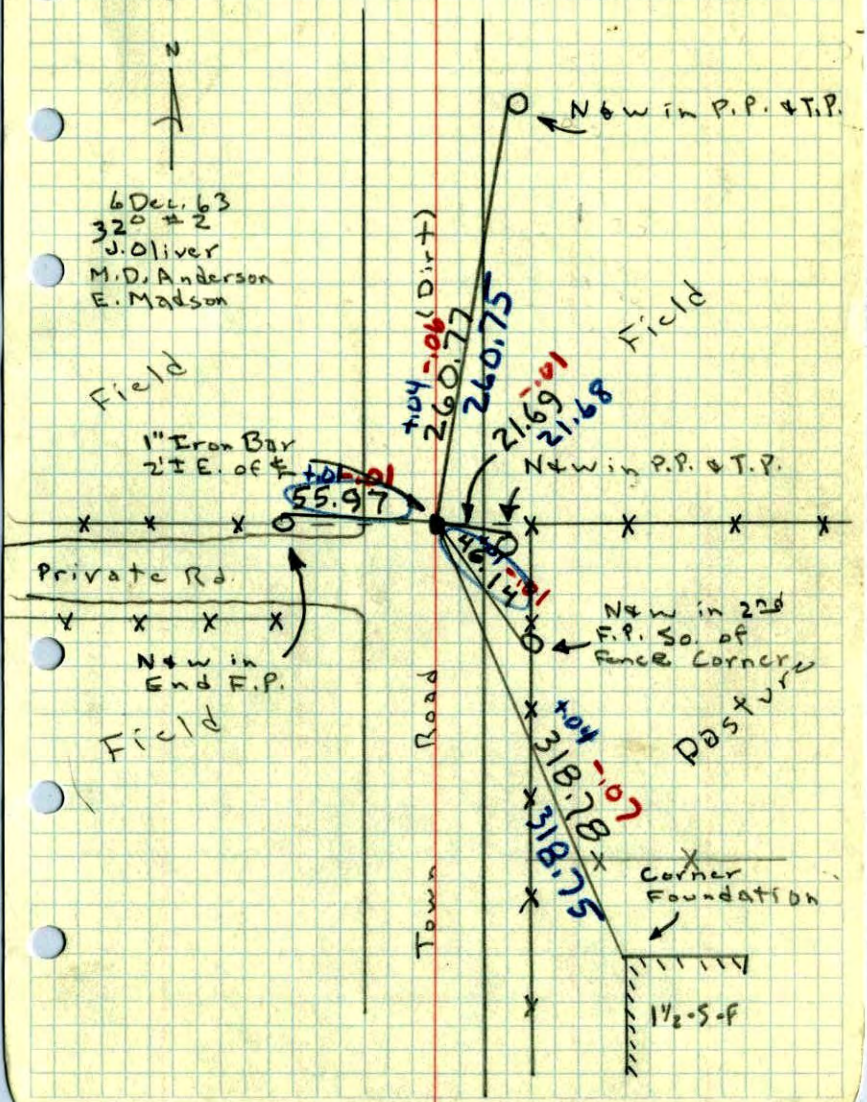
Found 1" Iron Bar down 1' From Don Hults ties.



6 Dec. 63

320 #2
J. Oliver
M.D. Anderson
E. Madson

N&W in P.P. & T.P.



TEMPERATURE CORRECTED
AND HORIZONTALLY
TAPED MEASUREMENTS

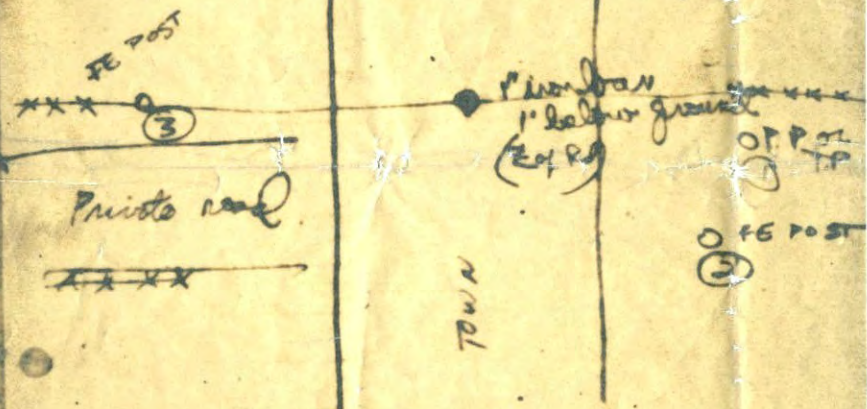
ROLAND W. ANDERSON
COUNTY SURVEYOR
ANOKA COUNTY, MINNESOTA

SE cor Sec 22, T 32N, R 22W

Tied
6 Dec. 63

Don't
Have

Road



- ① 21.65' P.P. or T.P. (N. side)
- ② 45.91' FE POST 2nd ^{line} from P.P. or T.P. (side)
- ③ 55.92' FE POST (N side) private rd.
Sign on (private rd. leaf off)
(N. side)