

CERTIFICATE OF LOCATION OF GOVERNMENT CORNER

County of Anoka

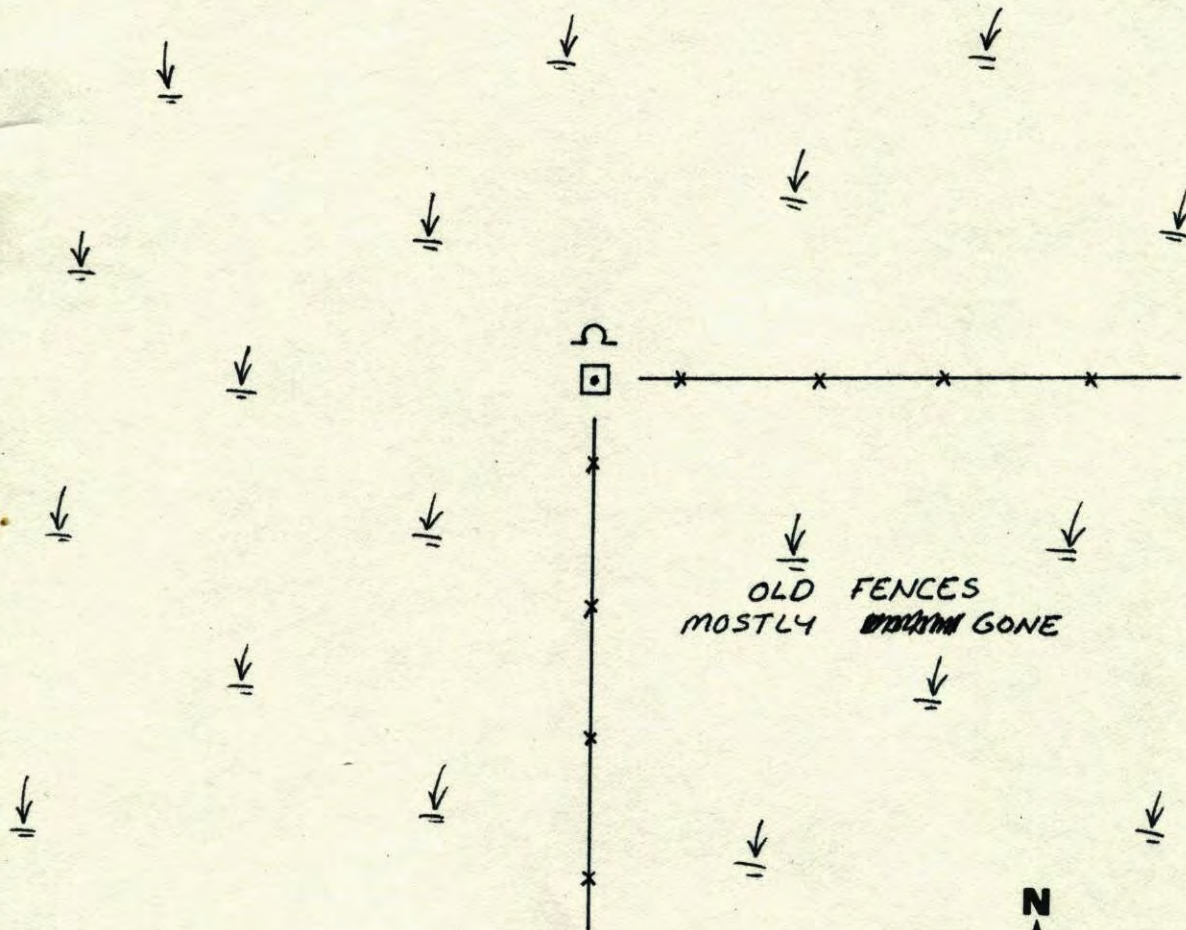
State of Minnesota

NORTH QTR. Corner of Sec. 4 Township 32 Range 22

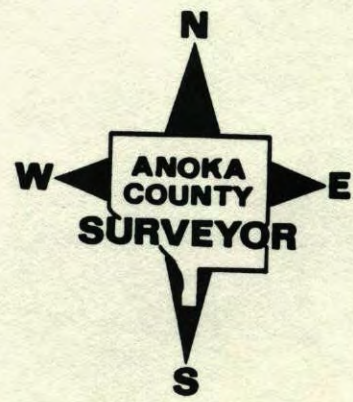
I hereby certify that on the 2 day of MARCH, 1977, I found the described corner which was evidenced by CONCRETE

and I further certify that to perpetuate the location of said corner, I did, at the exact location thereof, place a permanent marker consisting of CONCRETE MON.

which reference or witness monuments are located in the manner following:

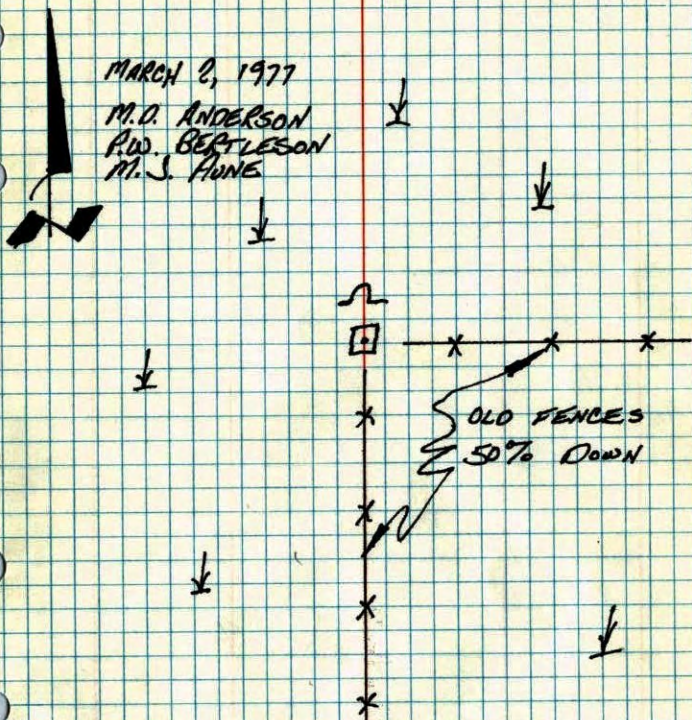


Revised date	Revised date	Revised date
W.C. 85		
8-10-95		



9
N¹/₄ Cor. Sec. 4-T32-R22

FOUND CONCRETE MONUMENT UP 1' IN SWAMP. PLACED WARNING SIGN & STEEL POST 1' S NORTH OF MONUMENT.



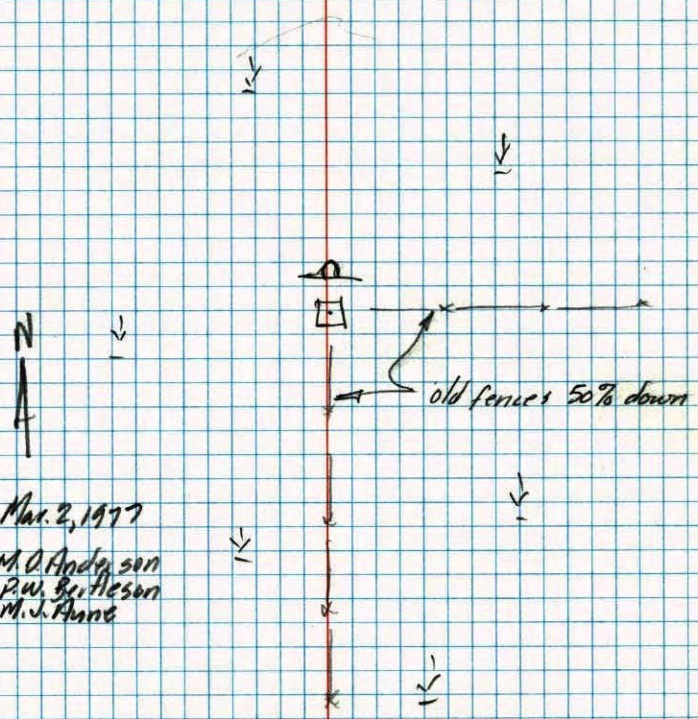
MARCH 2, 1977
 M. D. ANDERSON
 P. W. BERTLESON
 M. J. HUNT

TEMPERATURE CORRECTED
 AND HORIZONTALLY
 TAPED MEASUREMENTS

ROLAND W. ANDERSON
 COUNTY SURVEYOR
 ANOKA COUNTY, MINNESOTA

N¹/₄ Cor. Sec. 4-T32-R22

found conc. Mon. up 1' in Swamp
 Placed warning sign & Steel post 1' N. of Mon.



Mar. 2, 1977
 M. D. Anderson
 P. W. Bertleson
 M. J. Hunt