

# CERTIFICATE OF LOCATION OF GOVERNMENT CORNER

County of Anoka

State of Minnesota

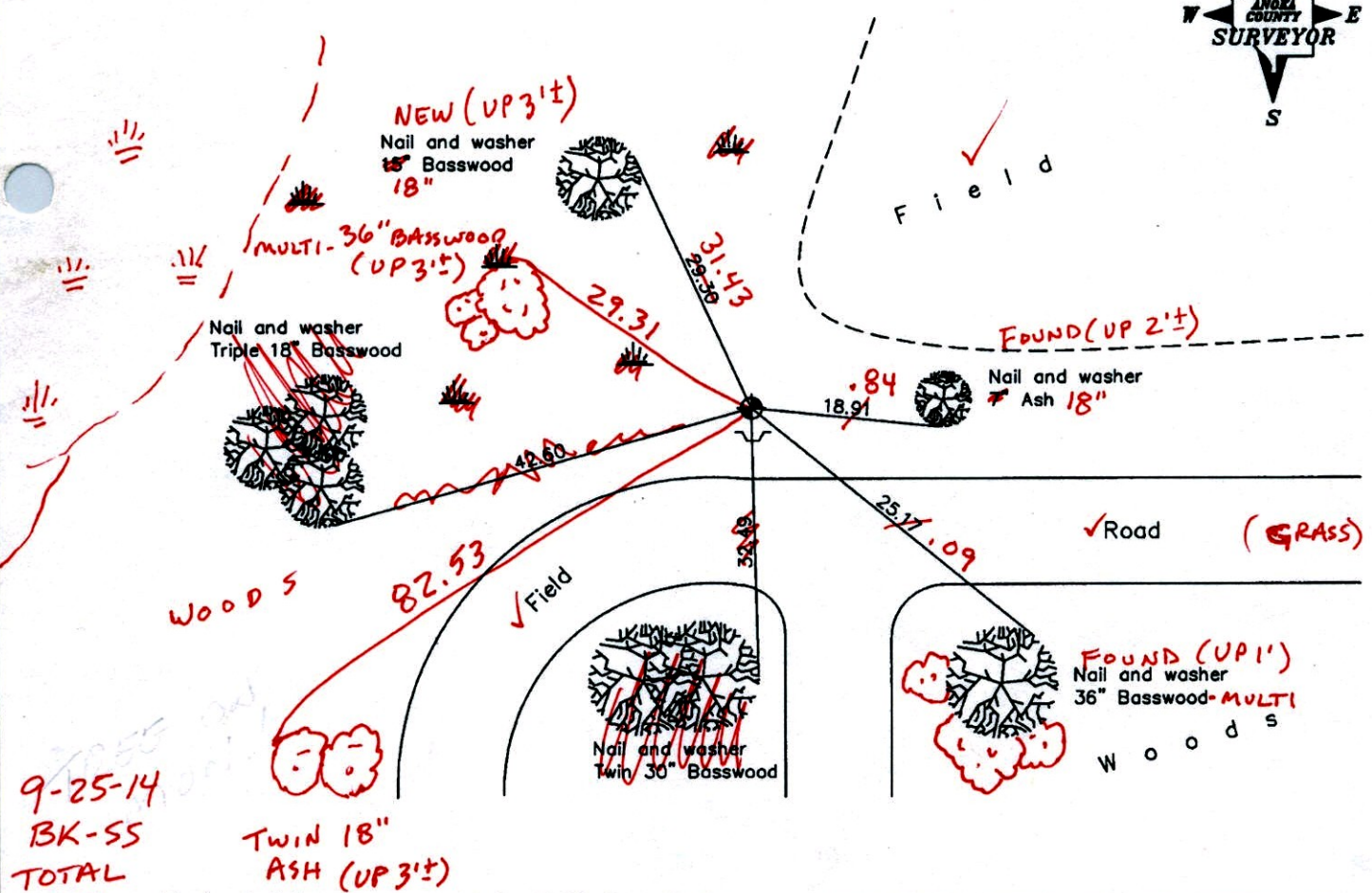
Witness Corner of Sec. 22 Township 32 Range 22  
 (on south line of section)

On the 28th day of February, 1983, the described corner was evidenced by a 1/2" iron pipe  
 from area resurvey

and to perpetuate the location of said corner, at the exact location thereof, a permanent marker  
 was placed consisting of a cast iron monument with a sign and post on the south side

AND on the 25th day of January, 2006, said permanent marker was found and the ties were  
updated

Updated reference ties are as shown below.



9-25-14  
 BK-SS  
 TOTAL  
 STA.

Revised date
1/05/93
8/18/95
1/25/06

N.A.D. 1983 Coordinates (1996 Adjustment)	
County Project Coordinates	
Northing	174721.0438
Easting	552634.8716
Date	1/25/06

I hereby certify that this United States public land survey monument record is correct and complete to the best of my knowledge and belief.

*Larry D. Hoium* Date 1/25/06

Larry D. Hoium, Anoka County Surveyor

Minnesota License Number 18165

# CERTIFICATE OF LOCATION OF GOVERNMENT CORNER

County of Anoka

State of Minnesota

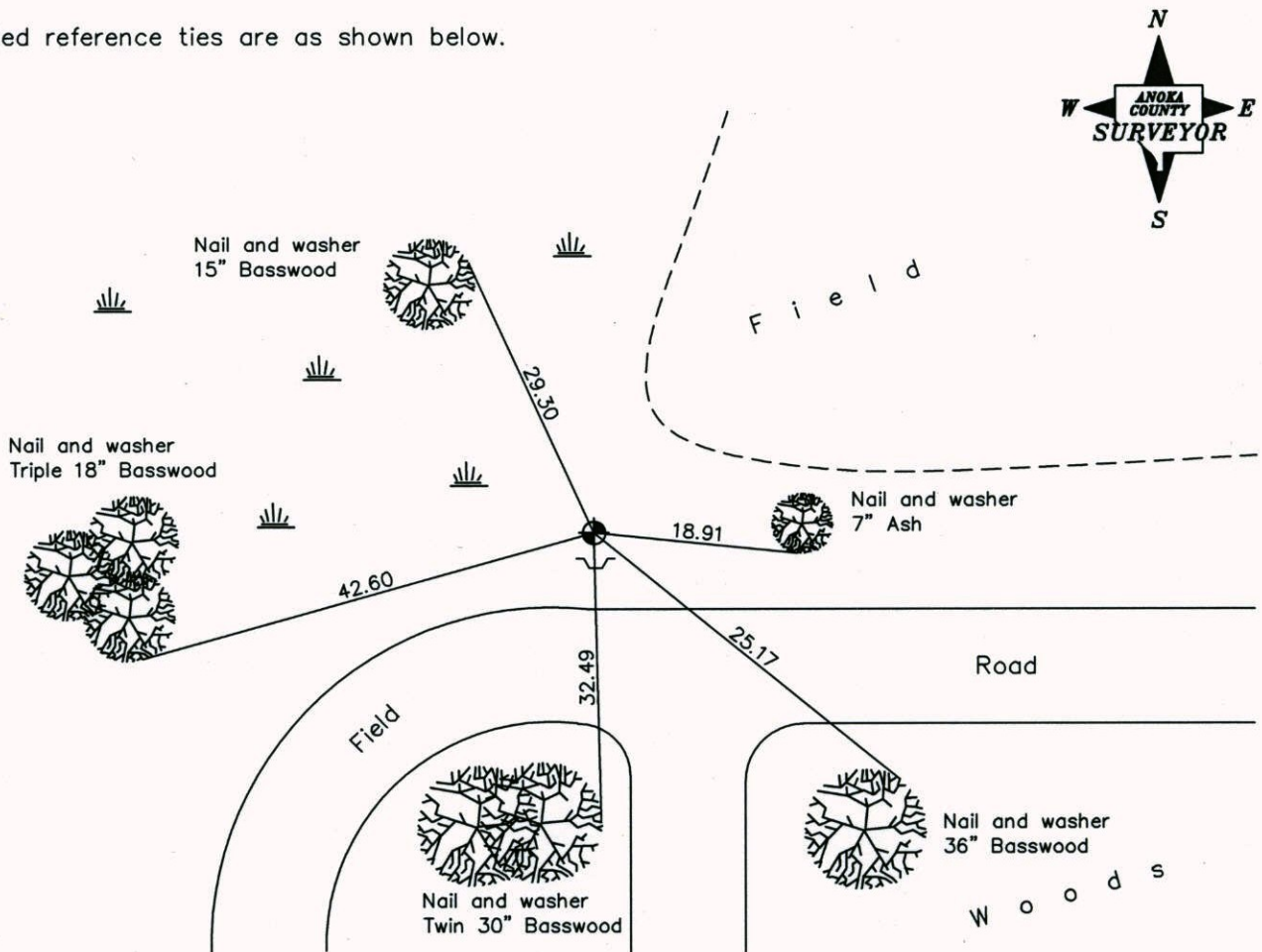
Witness Corner of Sec. 22 Township 32 Range 22  
 (on south line of section)

On the 28th day of February, 1983, the described corner was evidenced by a 1/2" iron pipe  
 from area resurvey

and to perpetuate the location of said corner, at the exact location thereof, a permanent marker  
 was placed consisting of a cast iron monument with a sign and post on the south side

AND on the 25th day of January, 2006, said permanent marker was found and the ties were  
 updated

Updated reference ties are as shown below.



Revised date
1/05/93
8/18/95
1/25/06

N.A.D. 1983 Coordinates (1996 Adjustment)	
County Project Coordinates	
Northing	<u>174721.0438</u>
Easting	<u>552634.8716</u>
Date	<u>1/25/06</u>

I hereby certify that this United States public land survey monument record is correct and complete to the best of my knowledge and belief.

*Larry D. Hoium* Date 1/25/06  
 \_\_\_\_\_, Anoka County Surveyor  
 Minnesota License Number 18165

# CERTIFICATE OF LOCATION OF GOVERNMENT CORNER

County of Anoka

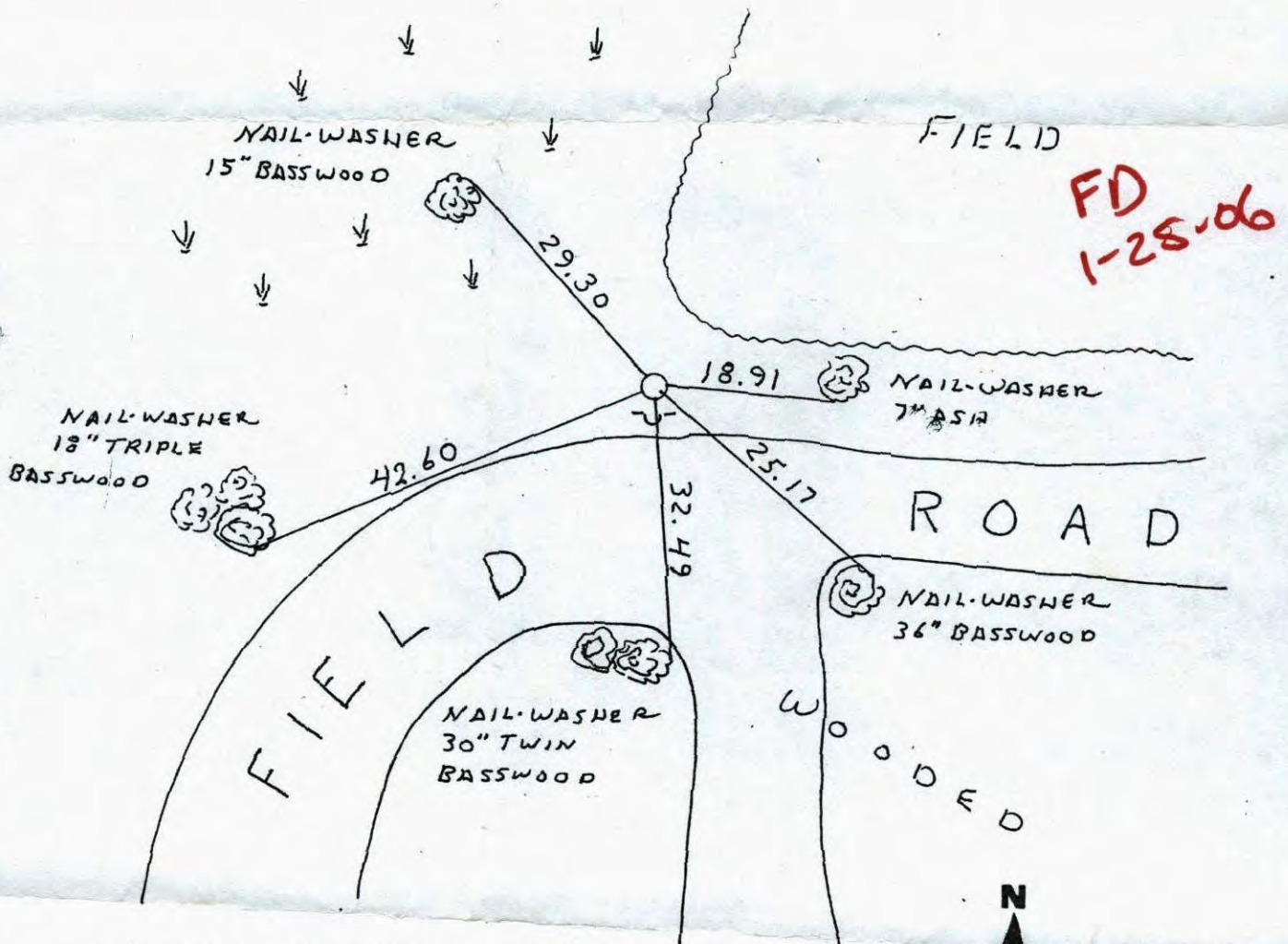
State of Minnesota

WITNESS Corner of Sec. 22 Township 32 Range 22  
 ON SOUTHLINE

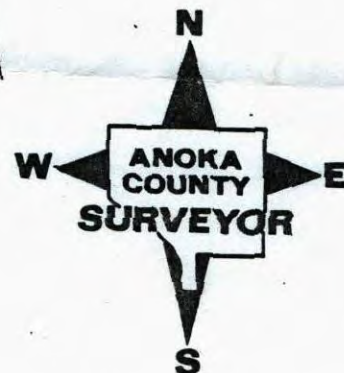
I hereby certify that on the 28<sup>TH</sup> day of FEB, 1983, I <sup>SET</sup> found the described corner which was evidenced by 1/2" IRON PIPE FROM AREA RESURVEY

and I further certify that to perpetuate the location of said corner, I did, at the exact location thereof, place a permanent marker consisting of CAST IRON MONUMENT SIGN AND POST ON SOUTH SIDE

which reference or witness monuments are located in the manner following:



Revised date	Revised date	Revised date
6-26-90		
1-5-93		
8-18-95		



# CERTIFICATE OF LOCATION OF GOVERNMENT CORNER

County of Anoka

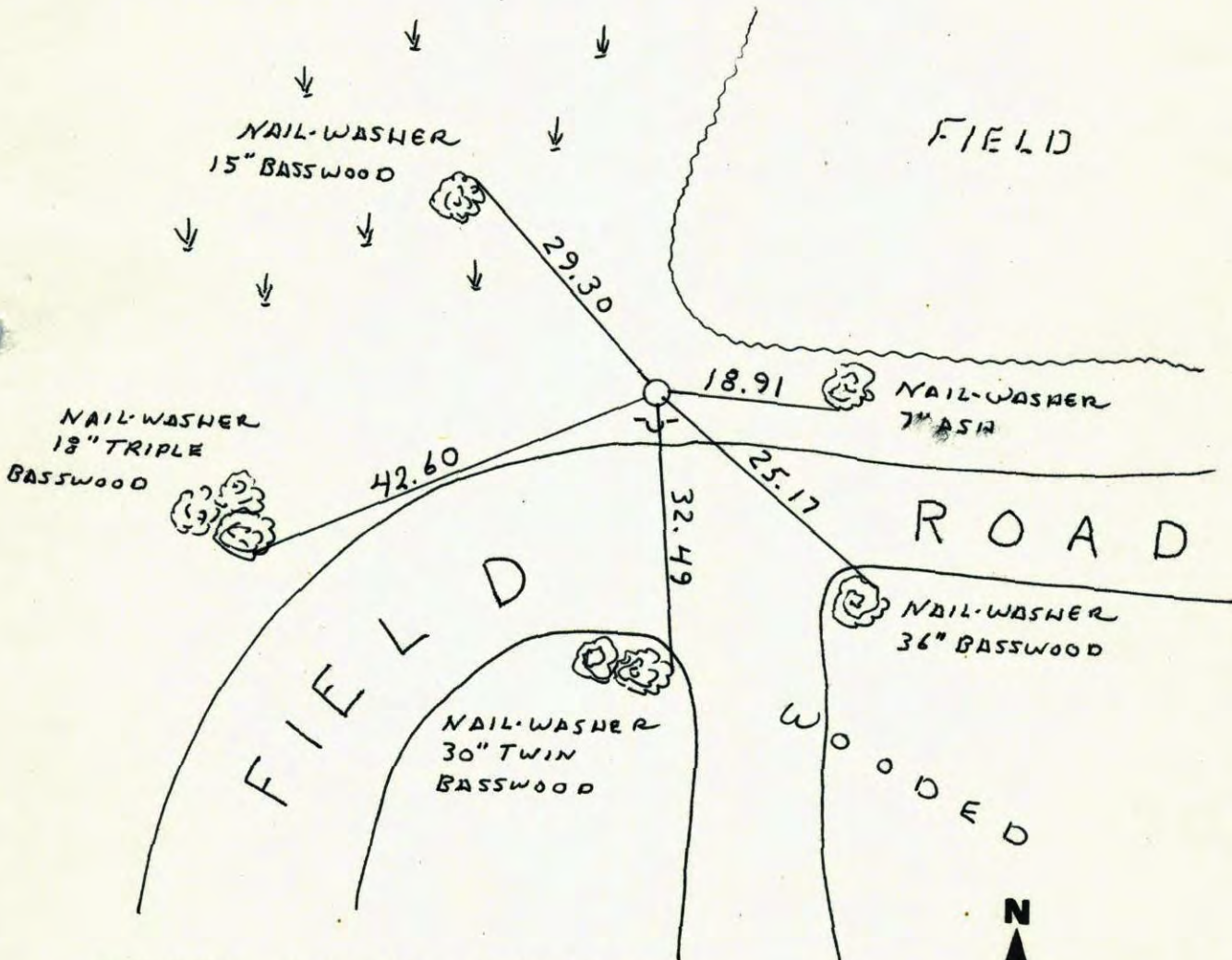
State of Minnesota

WITNESS Corner of Sec. 22 Township 32 Range 22  
ON SOUTHLINE

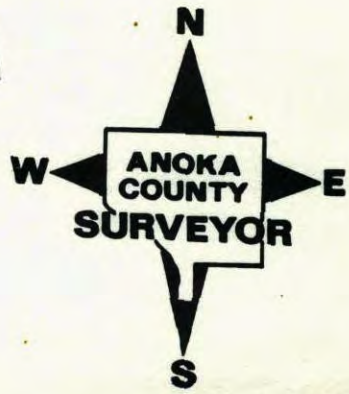
I hereby certify that on the 28<sup>TH</sup> day of FEB, 1983, I <sup>SET</sup> found the described corner which was evidenced by 1/2" IRON PIPE FROM AREA RESURVEY

and I further certify that to perpetuate the location of said corner, I did, at the exact location thereof, place a permanent marker consisting of CAST IRON MONUMENT SIGN AND POST ON SOUTH SIDE

which reference or witness monuments are located in the manner following:

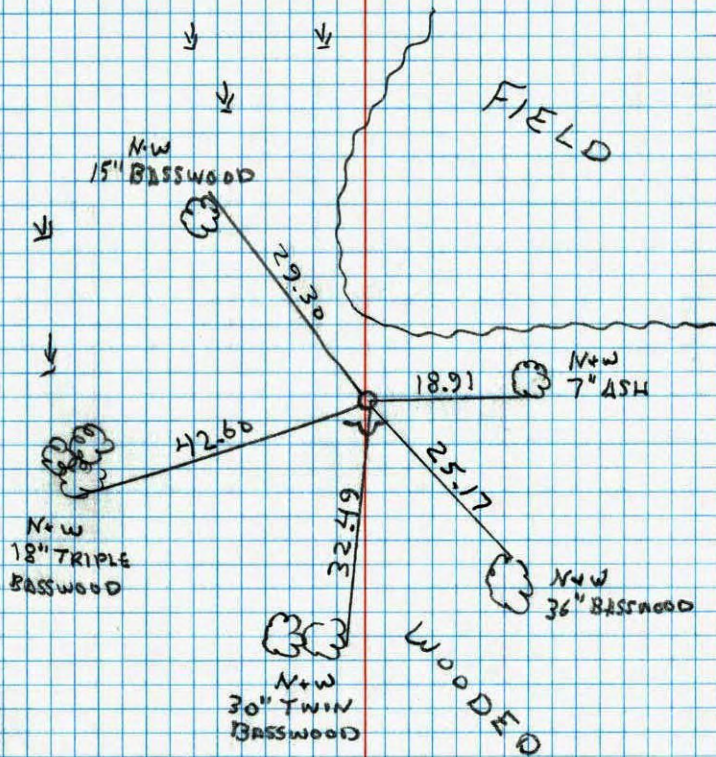


Revised date	Revised date	Revised date
6-26-90		
1-5-93		
8-18-95		



WG ON S. LINE OF SE 1/4 SEC 22 T 32 R 22

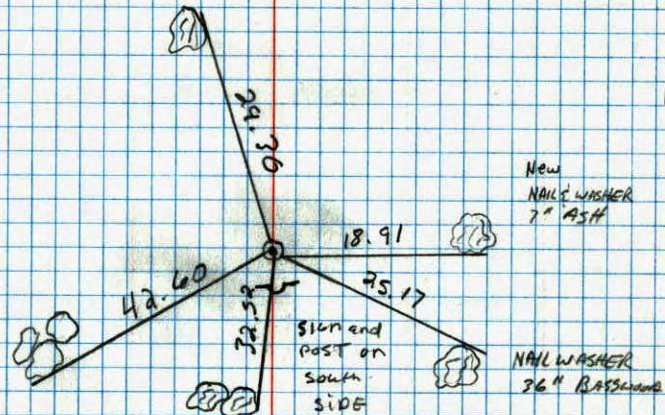
REPLACED IRON PIPE WITH CAST  
IRON MON. C.I. FLUSH WITH SIGN  
AND POST ON SOUTH SIDE.



1-5-93  
W. LARSON  
M. STEWART

WITNESS corner of Sec. 22 T 32 R 22  
south line Sec 22  
Reticed 1/2" iron pipe

FIELD




6-26-90  
D. KLESLY  
M. ZIMMELMAN

WG ON SOUTH LINE OF SE 1/4 SEC. 22 T32 R22

SET 1/2" IRON PIPE FROM AREA RESURVEY

SIGN AND POST ON SOUTH SIDE


 B 3 45°  
 2-28-83  
 N. LARSON  
 B. GUETZKO  
 D. YAGLAR

