

CERTIFICATE OF LOCATION OF GOVERNMENT CORNER

County of Anoka

State of Minnesota

Southwest Corner of Sec. 22 Township 32 Range 22

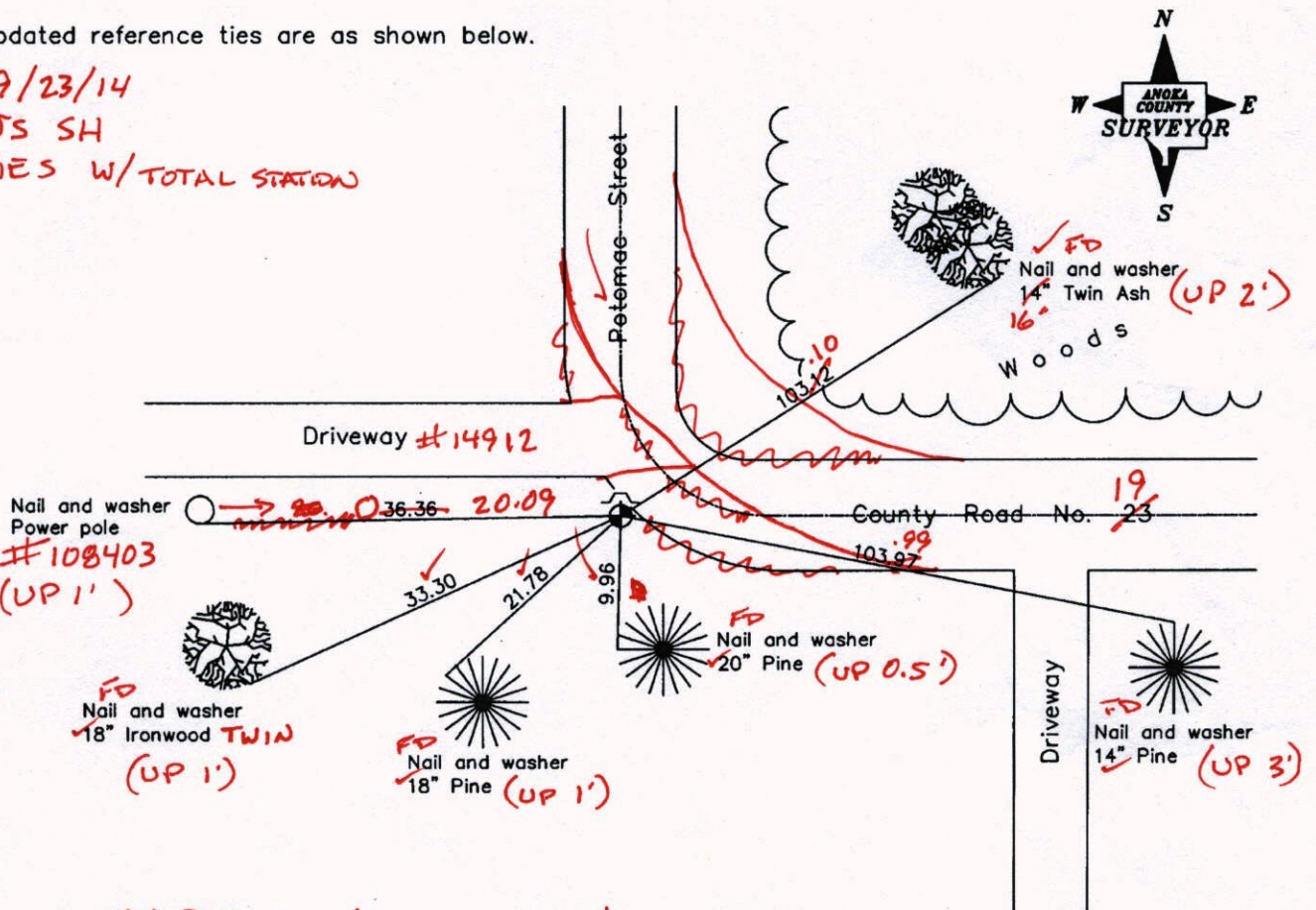
On the 6th day of December, 1963, the described corner was evidenced by a well point

and to perpetuate the location of said corner, at the exact location thereof, a permanent marker was placed consisting of a cast iron monument with a steel post on the north side

AND on the 16th day of June, 2003, said permanent marker was found and the ties were updated ("T" Post 0.5' NORTH OF CIM) CIM 40'± SW OF BIT EDGE OF CURVE.

Updated reference ties are as shown below.

9/23/14
JS SH
TIES W/TOTAL STATION



★ UNABLE TO VRS DUE TO TREE COVER. ★

Revised date
12/28/92
8/14/95
6/16/03

N.A.D. 1983 Coordinates (1996 Adjustment)	
County Project Coordinates	
Northing	174666.2309
Easting	547936.2411
Date	6/16/03

I hereby certify that this United States public land survey monument record is correct and complete to the best of my knowledge and belief.

Date 6/16/03

Larry D. Hoium, Anoka County Surveyor
 Minnesota License Number 18165

CERTIFICATE OF LOCATION OF GOVERNMENT CORNER

County of Anoka

State of Minnesota

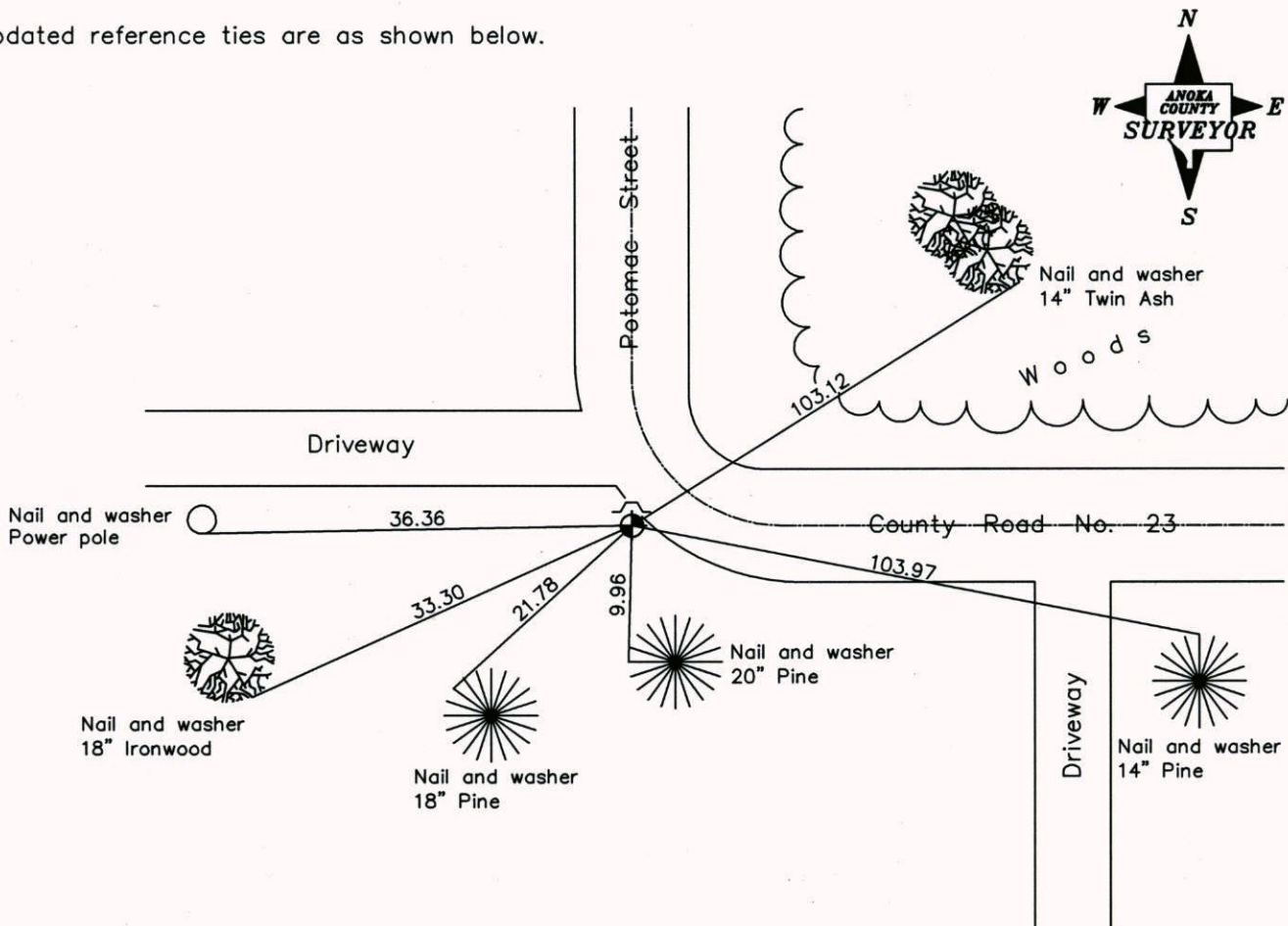
Southwest Corner of Sec. 22 Township 32 Range 22

On the 6th day of December, 1963, the described corner was evidenced by a well point

and to perpetuate the location of said corner, at the exact location thereof, a permanent marker was placed consisting of a cast iron monument with a steel post on the north side

AND on the 16th day of June, 2003, said permanent marker was found and the ties were updated

Updated reference ties are as shown below.



Revised date
12/28/92
8/14/95
6/16/03

N.A.D. 1983 Coordinates (1996 Adjustment)	
County Project Coordinates	
Northing	<u>174666.2309</u>
Easting	<u>547936.2411</u>
Date	<u>6/16/03</u>

I hereby certify that this United States public land survey monument record is correct and complete to the best of my knowledge and belief.

Larry D. Hoium Date 6/16/03

Larry D. Hoium, Anoka County Surveyor

Minnesota License Number 18165

CERTIFICATE OF LOCATION OF GOVERNMENT CORNER

County of Anoka

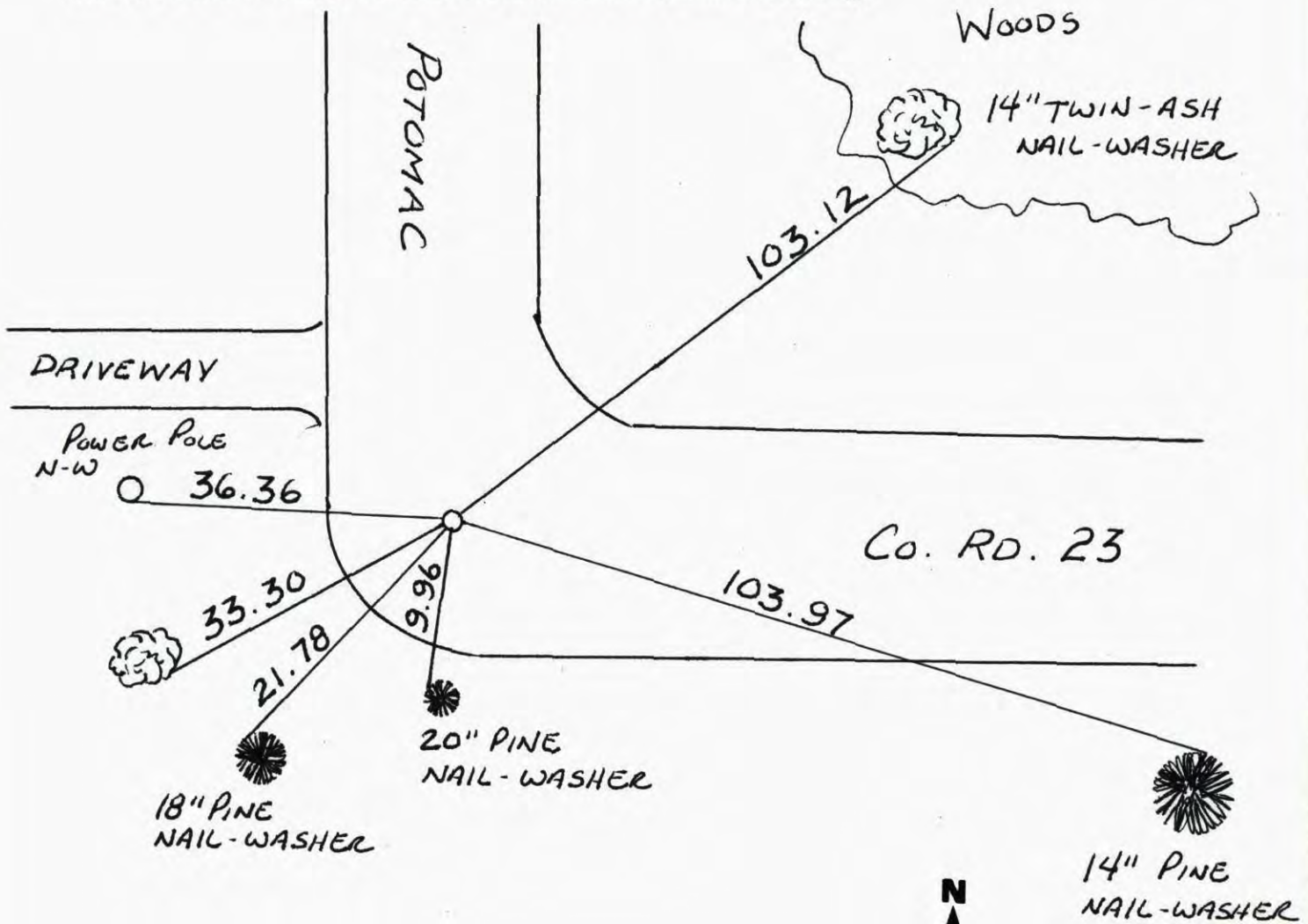
State of Minnesota

SOUTHWEST Corner of Sec. 22 Township 32 Range 22

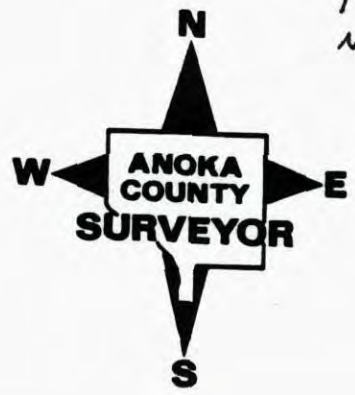
I hereby certify that on the 6 day of DEC., 1963, I found the described corner which was evidenced by WELL POINT

and I further certify that to perpetuate the location of said corner, I did, at the exact location thereof, place a permanent marker consisting of CAST IRON MONY. WITH STEEL POST ON NORTH SIDE

which reference or witness monuments are located in the manner following:



Revised date	Revised date	Revised date



CERTIFICATE OF LOCATION OF GOVERNMENT CORNER

County of Anoka

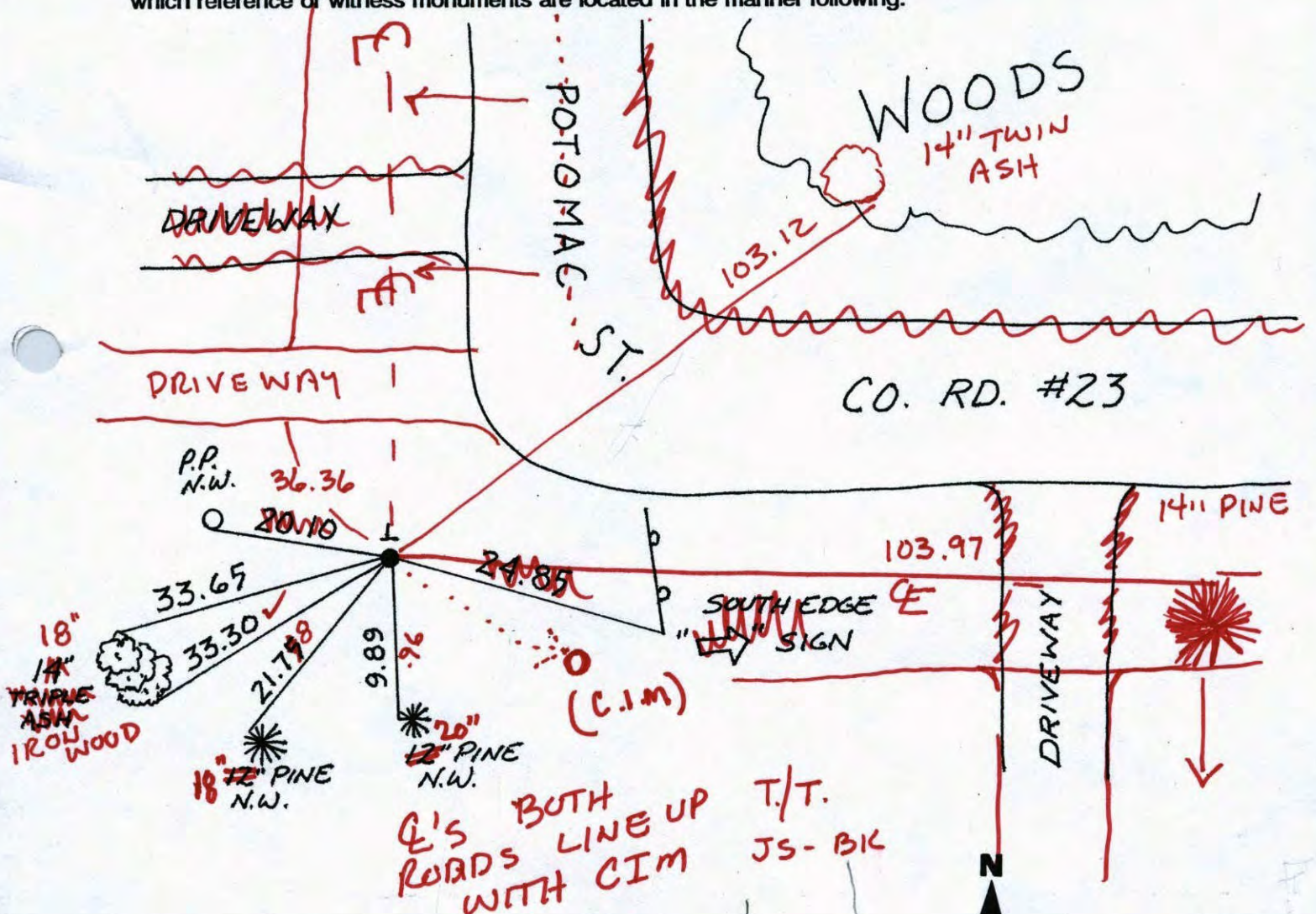
State of Minnesota

SOUTHWEST Corner of Sec. 22 Township 32 Range 22

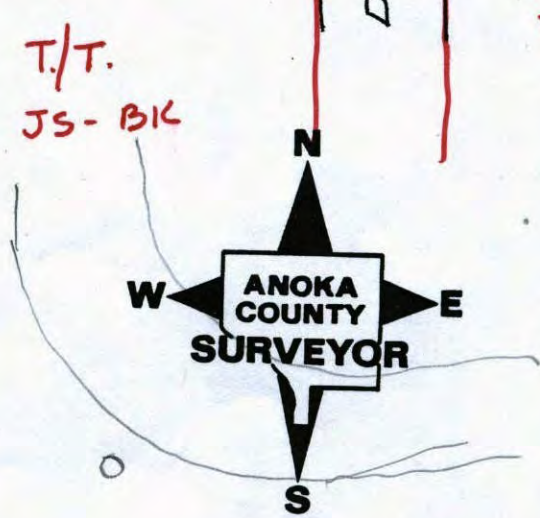
I hereby certify that on the 6 day of DEC., 1963, I found the described corner which was evidenced by WELL POINT

and I further certify that to perpetuate the location of said corner, I did, at the exact location thereof, place a permanent marker consisting of CAST IRON MON WITH STEEL POST ON NORTH SIDE ON E EXTENDED

which reference or witness monuments are located in the manner following:

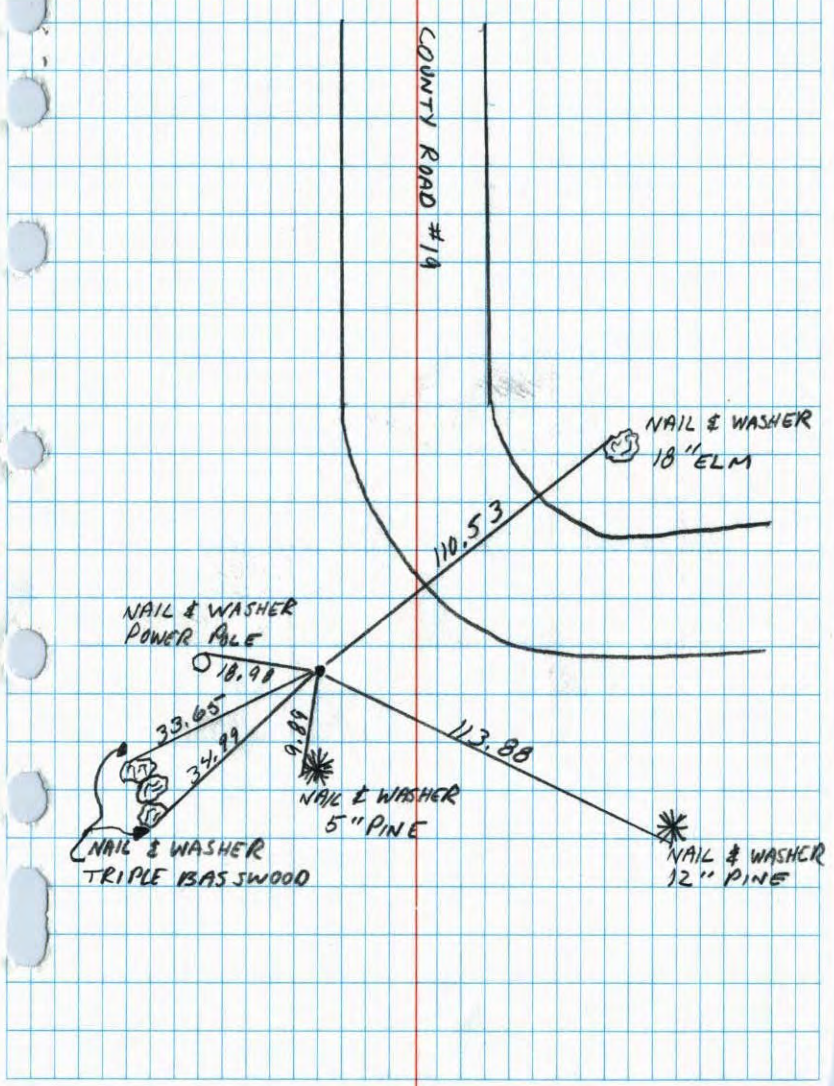


Revised date	Revised date	Revised date
12-28-92		
8-14-95		



SOUTHWEST COR. SEC. 22 T32 R22

RETIED CAST IRON MONUMENT.



NO. 446

TELEPHONE

S 2-8

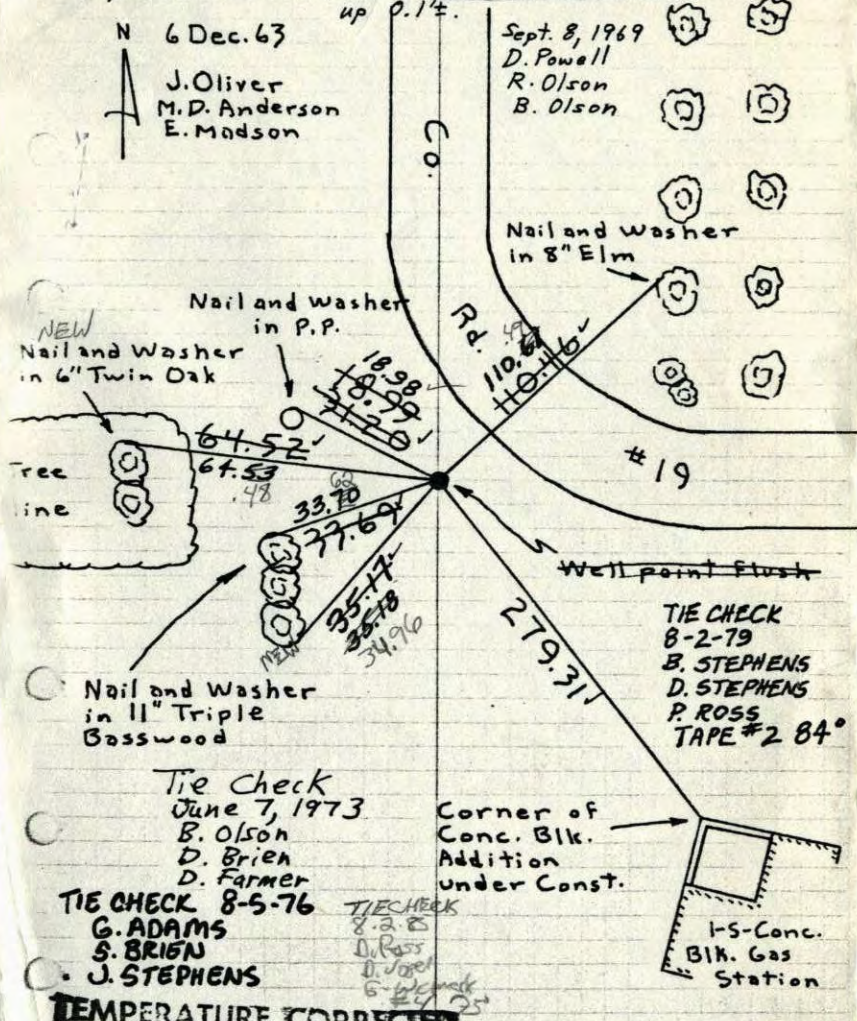
SW Cor. Sec. 22, T32, R22

Found 1/4" Well point From Don Hults ties.
Replaced Well Point with Cast Iron Monument

N 6 Dec. 63

J. Oliver
M. D. Anderson
E. Madson

Sept. 8, 1969
D. Powell
R. Olson
B. Olson



Tie Check
June 7, 1973
B. Olson
D. Brien
D. Farmer

TIE CHECK 8-5-76
G. ADAMS
S. BRIEN
J. STEPHENS

TIE CHECK
8-2-75
D. Ross
D. Joad
5-2-76

TIE CHECK
8-2-79
B. STEPHENS
D. STEPHENS
P. ROSS
TAPE #2 84°

TEMPERATURE CORRECTED
AND HORIZONTALLY
TAPED MEASUREMENTS

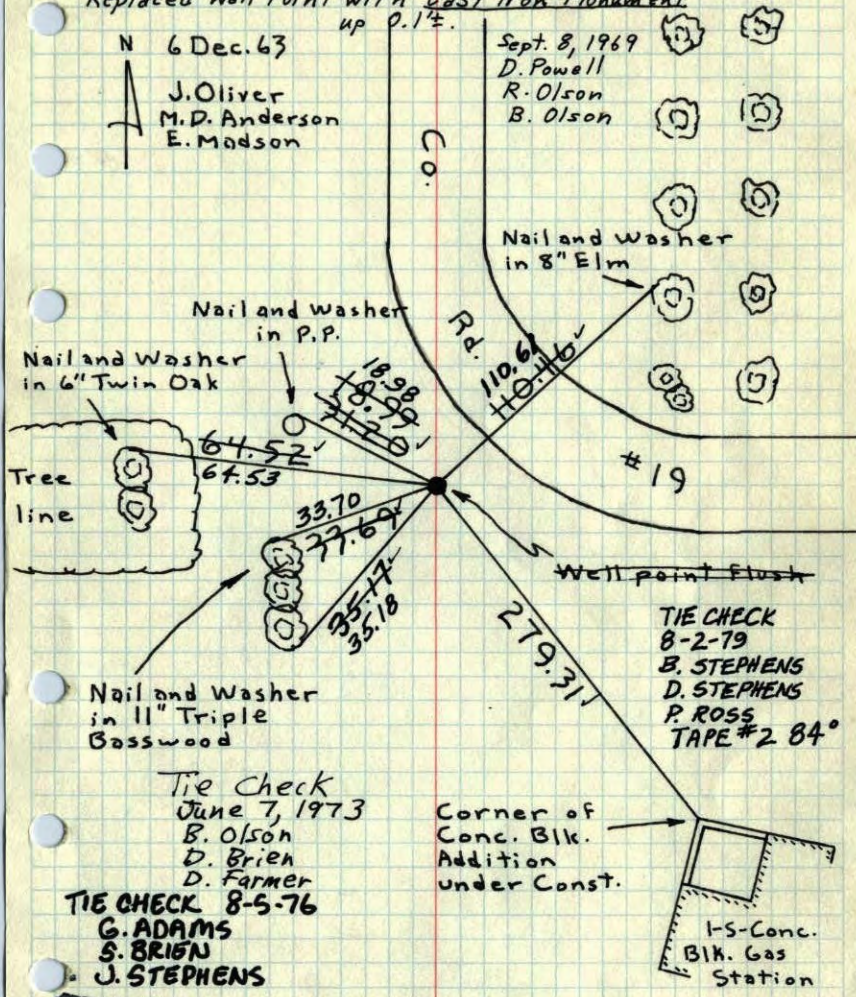
ROLAND W. ANDERSON
COUNTY SURVEYOR
ANOKA COUNTY, MINNESOTA

SW Cor. Sec. 22, T32, R22

Found ~~1 1/4" Well point~~ From Don Hults ties.
Replaced Well Point with ~~Cast Iron Monument~~
up 0.1 1/2"

N 6 Dec. 63
J. Oliver
M. D. Anderson
E. Madson

Sept. 8, 1969
D. Powell
R. Olson
B. Olson



TEMPERATURE CORRECTED
AND HORIZONTALLY
TAPED MEASUREMENTS

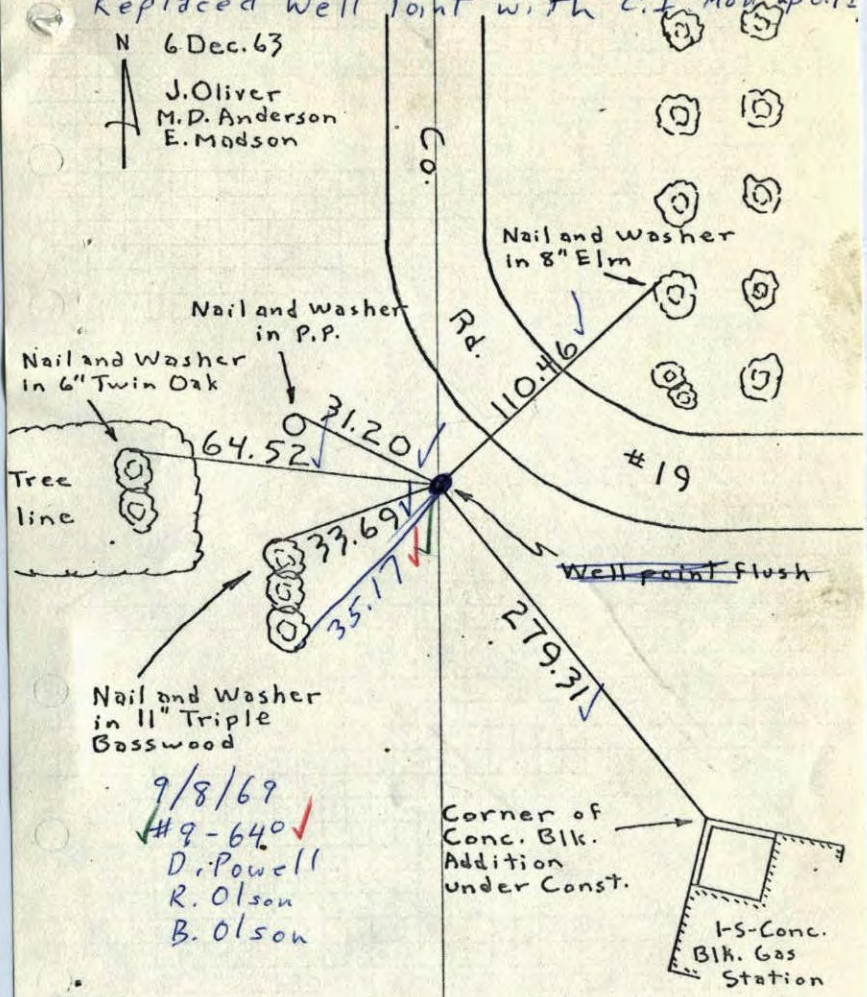
ROLAND W. ANDERSON
COUNTY SURVEYOR
ANOKA COUNTY, MINNESOTA

SW Cor. Sec. 22, T32, R22

Found ~~1 1/4" Well point~~ From Don Hults ties.
Replaced Well Point with ~~C.I. Mon.~~ up 0.1 1/2"

N 6 Dec. 63
J. Oliver
M. D. Anderson
E. Madson

Sept. 8, 1969
D. Powell
R. Olson
B. Olson



TEMPERATURE CORRECTED
AND HORIZONTALLY
TAPED MEASUREMENTS

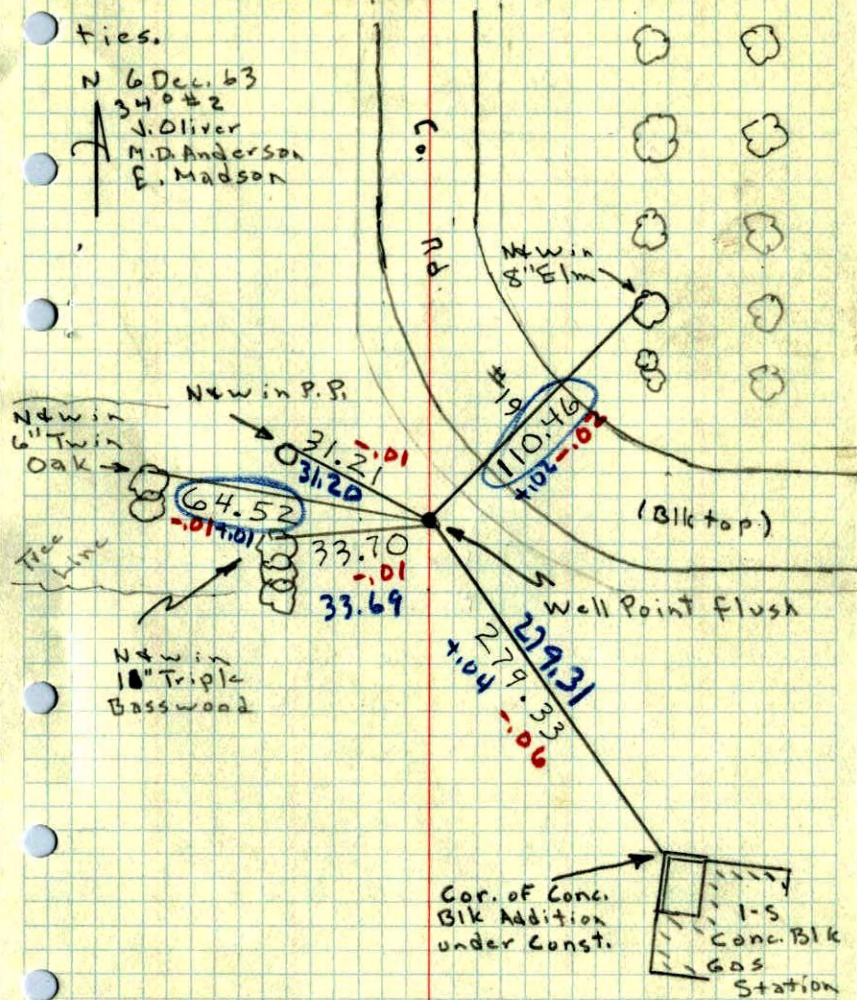
ROLAND W. ANDERSON
COUNTY SURVEYOR
ANOKA COUNTY, MINNESOTA

SW Cor. Sec. 22, T32, R22

Found 1 1/4" wellpoint from Dan Hults

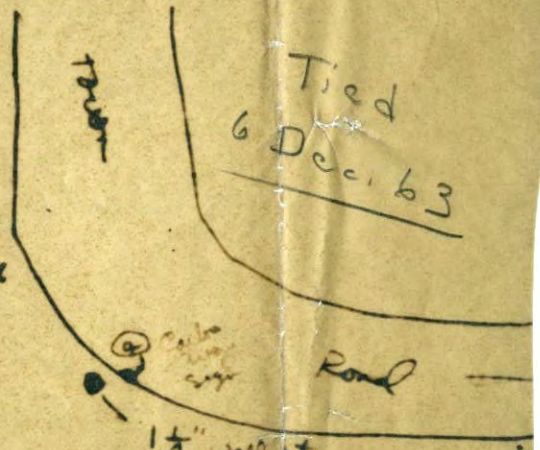
ties.

N 6 Dec. 63
340 #2
J. Oliver
M.D. Anderson
E. Madson



SW cor Sec. 22, T32N, R22W

AZA



Tied
6 Dec. 63

① P.P. on T.P.

② P.P. on T.P. 3/4" wall

③ P.P. on T.P.

Don't Have

④ Carlos

1 1/4" wall pt.
level with ground

- ① 21.21 P.P. on T.P. (N side)
- ② 33.15' N. side of P.P. on T.P. (N side)
- ③ 70.18' P.P. on T.P. (N. side)
- ④ 12.57' (S. side) Carlos