

CERTIFICATE OF LOCATION OF GOVERNMENT CORNER

County of Anoka

State of Minnesota

Southwest Corner of Sec. 21 Township 32 Range 22

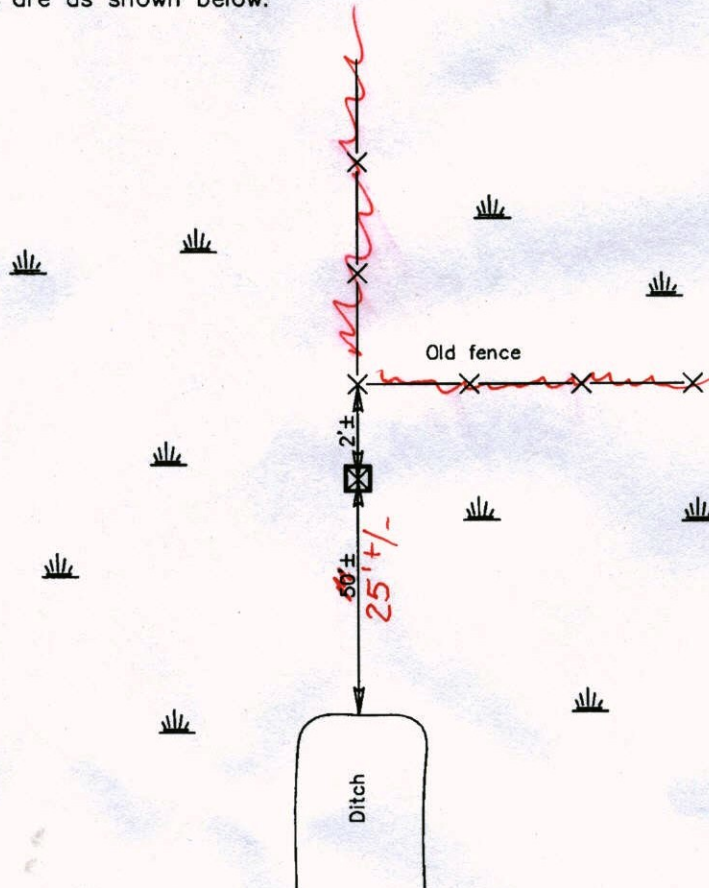
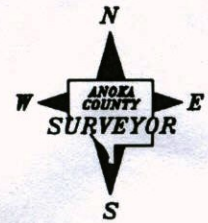
On the 20th day of February, 1976, the described corner was evidenced by a concrete monument

and to perpetuate the location of said corner, at the exact location thereof, a permanent marker was placed consisting of a red and white 2" square steel Telspar monument

(UP 6' SIGN FACING N.)

AND on the 25th day of February, 2009, said permanent marker was found and the ties were updated

Updated reference ties are as shown below.



1313-SH-SS
3/9/15

Revised date

5/06/93
8/11/95
2/25/09

N.A.D. 1983 Coordinates
(1996 Adjustment)

County Project Coordinates	
Northing	174659.5920
Easting	542661.9291
Date	3/19/03

I hereby certify that this United States public land survey monument record is correct and complete to the best of my knowledge and belief.

Larry D. Hoium Date 2/25/09
Larry D. Hoium, Anoka County Surveyor
Minnesota License Number 18165

N = 174659.3674

E = 542662.0976

3D=0.03

CERTIFICATE OF LOCATION OF GOVERNMENT CORNER

County of Anoka

State of Minnesota

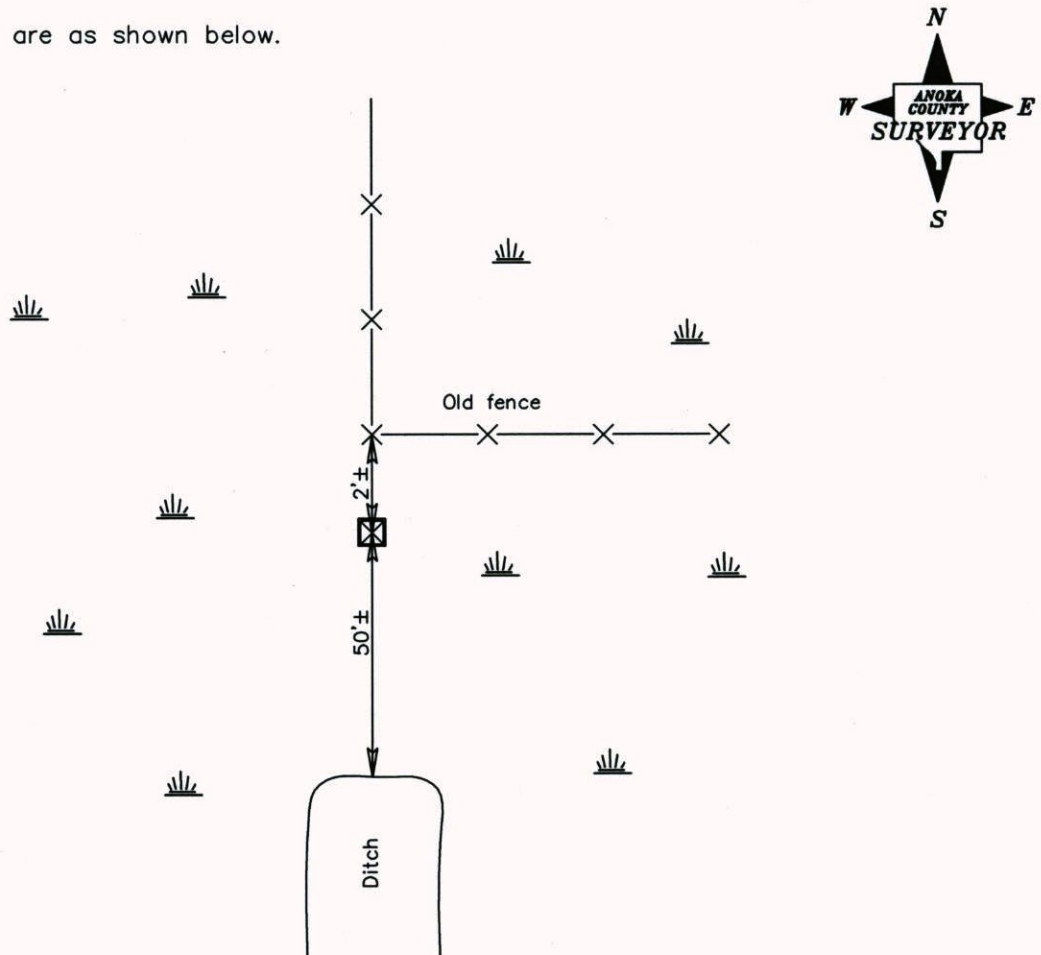
Southwest Corner of Sec. 21 Township 32 Range 22

On the 20th day of February, 1976, the described corner was evidenced by a concrete monument

and to perpetuate the location of said corner, at the exact location thereof, a permanent marker was placed consisting of a red and white 2" square steel Telspar monument

AND on the 25th day of February, 2009, said permanent marker was found and the ties were updated

Updated reference ties are as shown below.



Revised date
5/06/93
8/11/95
2/25/09

N.A.D. 1983 Coordinates (1996 Adjustment)	
County Project Coordinates	
Northing	<u>174659.5920</u>
Easting	<u>542661.9291</u>
Date	<u>3/19/03</u>

I hereby certify that this United States public land survey monument record is correct and complete to the best of my knowledge and belief.

Larry D. Hoium Date 2/25/09

Larry D. Hoium, Anoka County Surveyor

Minnesota License Number 18165

CERTIFICATE OF LOCATION OF GOVERNMENT CORNER

County of Anoka

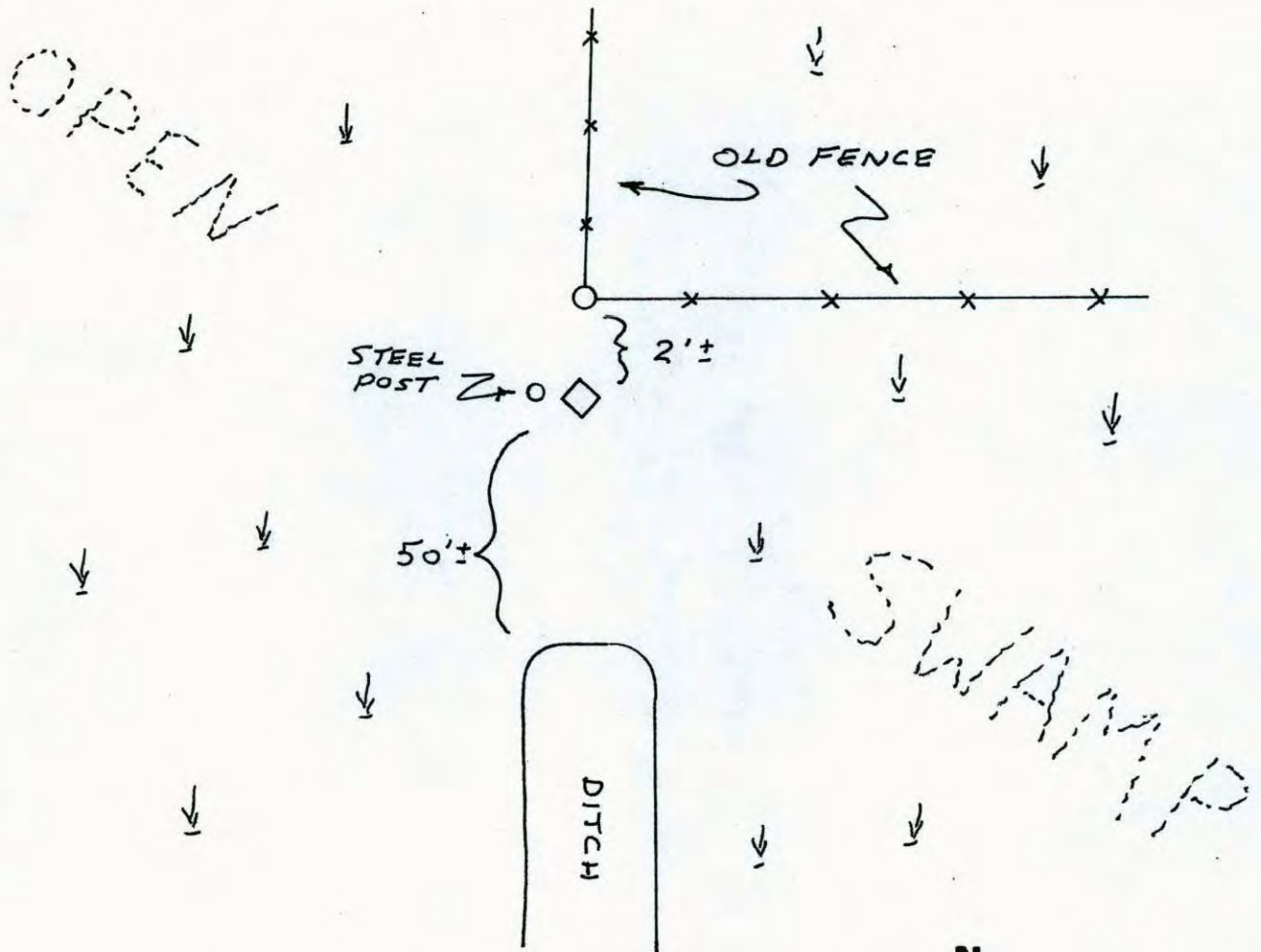
State of Minnesota

SOUTHWEST Corner of Sec. 21 Township 32 Range 22

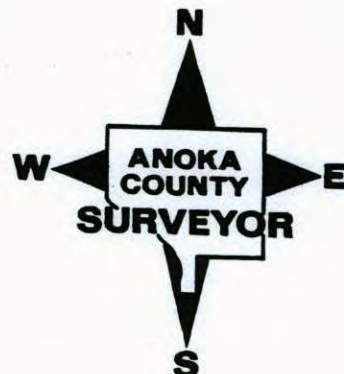
I hereby certify that on the 20TH day of FEB, 19 76, I found the described corner which was evidenced by CONCRETE MONUMENT

and I further certify that to perpetuate the location of said corner, I did, at the exact location thereof, place a permanent marker consisting of ~~SAME, STEEL PIPE ON WEST SIDE UP 2.00' ± CONCRETE UNDER WATER~~ **RED & WHITE TELSPAR MONUMENT 2" SQ. STEEL PIPE**

which reference or witness monuments are located in the manner following:



Revised date	Revised date	Revised date
5-6-93 HL		
8-11-95		
2-25-09		



CERTIFICATE OF LOCATION OF GOVERNMENT CORNER

County of Anoka

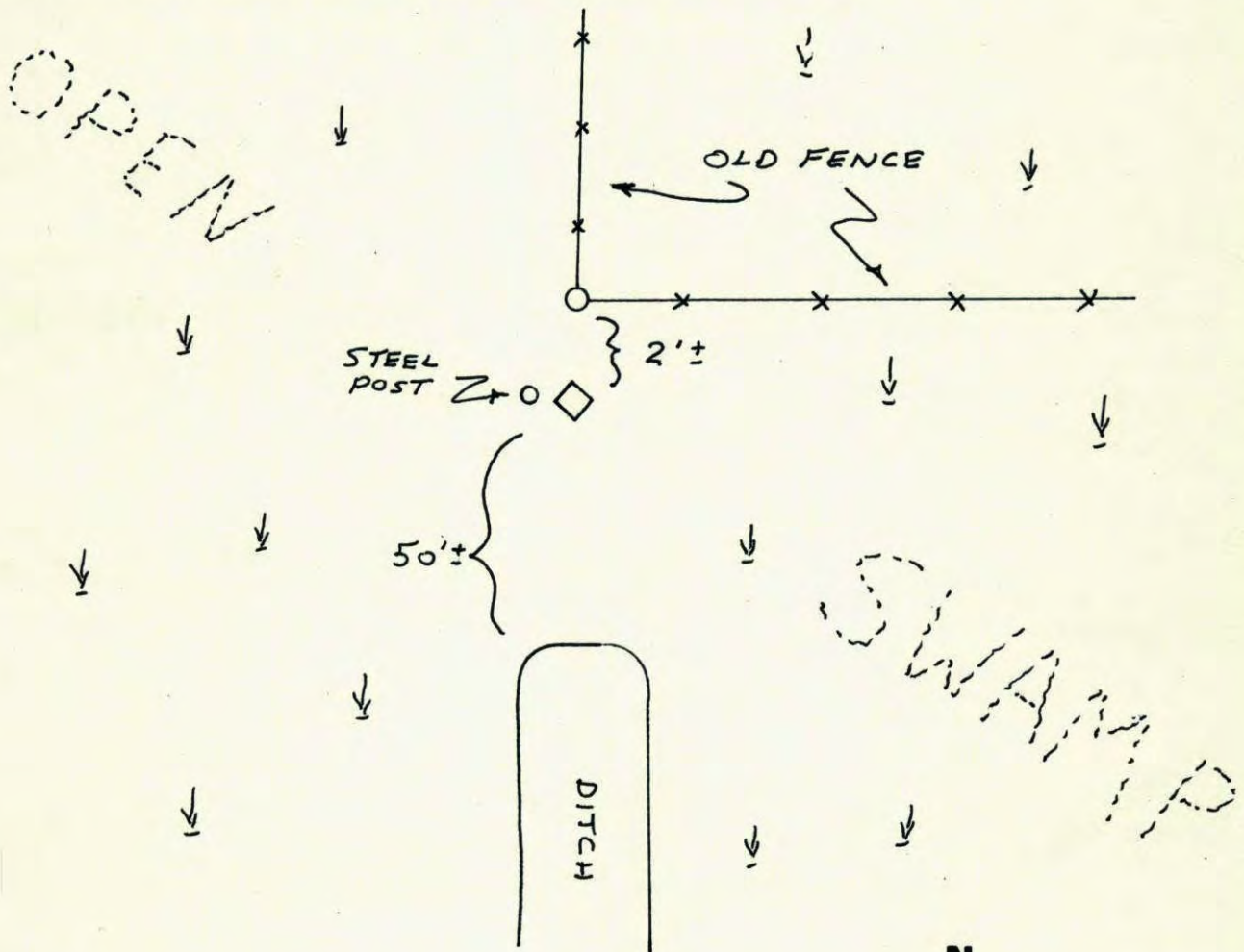
State of Minnesota

SOUTHWEST Corner of Sec. 21 Township 32 Range 22

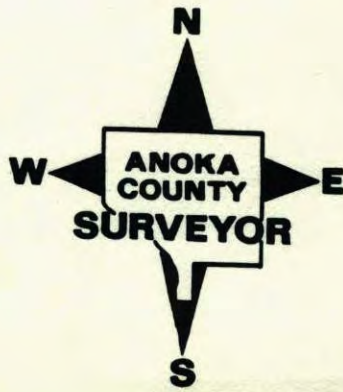
I hereby certify that on the 20TH day of FEB, 19 76, I found the described corner which was evidenced by CONCRETE MONUMENT

and I further certify that to perpetuate the location of said corner, I did, at the exact location thereof, place a permanent marker consisting of SAME, STEEL PIPE ON WEST SIDE UP 2.00' ± CONCRETE UNDER WATER

which reference or witness monuments are located in the manner following:



Revised date	Revised date	Revised date
5-6-93 HL		
8-11-95		



S.W. Cor. Sec. 21-T32-R22
found Conc. Monument undisturbed
found $1\frac{1}{2}$ '± under water level

N
↑

Feb. 20, 1976
M. O. Anderson
P. W. Bertleson
M. J. Hume

