

# CERTIFICATE OF LOCATION OF GOVERNMENT CORNER

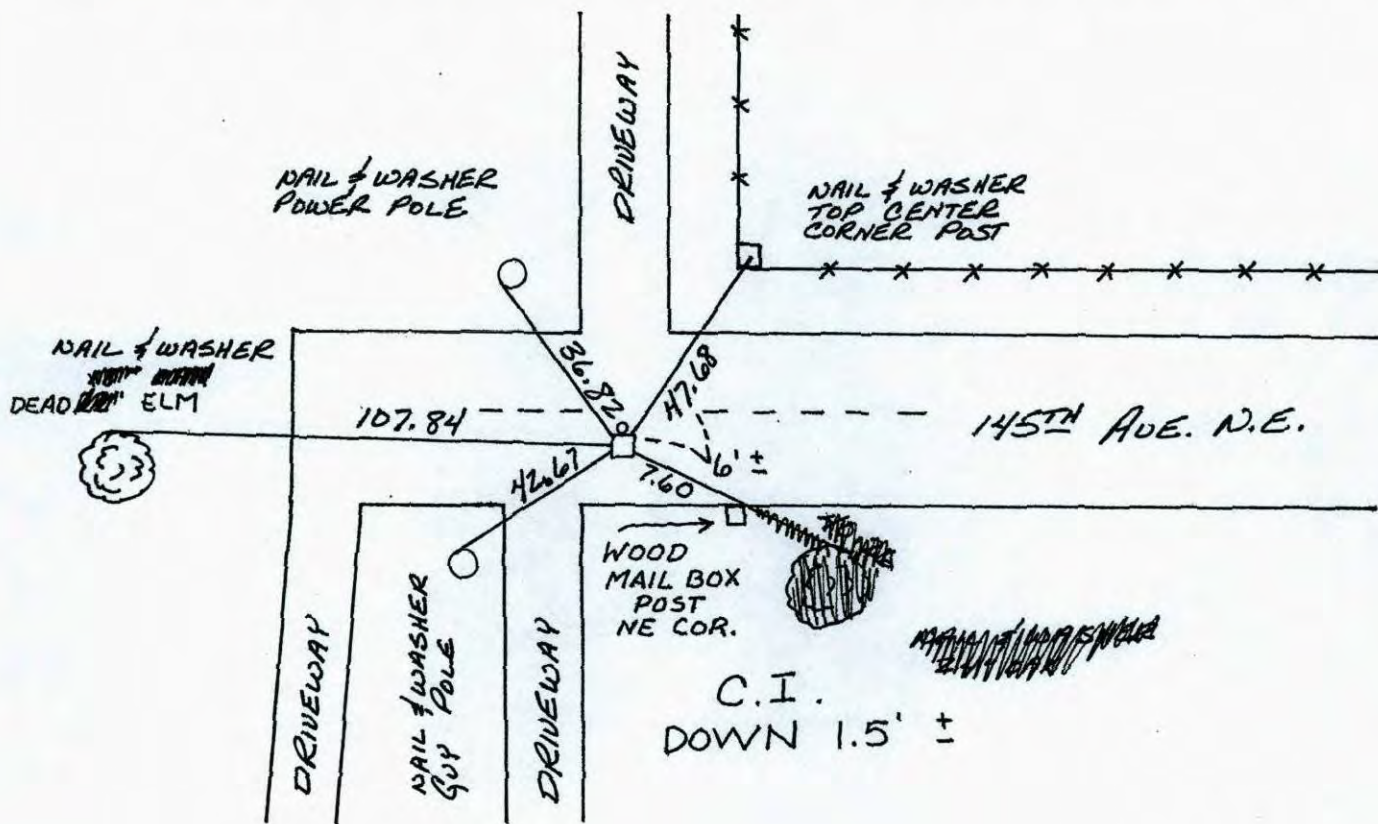
County of Anoka

State of Minnesota

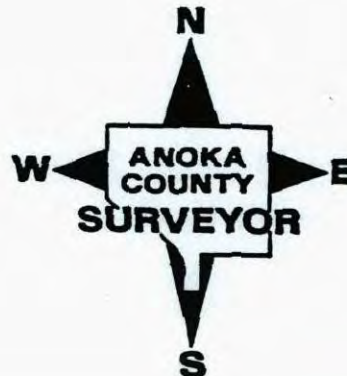
EAST 1/4 Corner of Sec. 29 Township 32 Range 22

I hereby certify that on the 18 day of SEPTEMBER, 1964, I found the described corner which was evidenced by ~~IRON MONUMENT~~  
CAST IRON MON. (BROKEN OFF CONCRETE MON.)

and I further certify that to perpetuate the location of said corner, I did, at the exact location thereof, place a permanent marker consisting of ~~CAST IRON MONUMENT~~  
~~"~~ CAST IRON.  
 which reference or witness monuments are located in the manner following:



Revised date	Revised date	Revised date
8-5-85		
8-25-89		
RESET 8-24-95		



# CERTIFICATE OF LOCATION OF GOVERNMENT CORNER

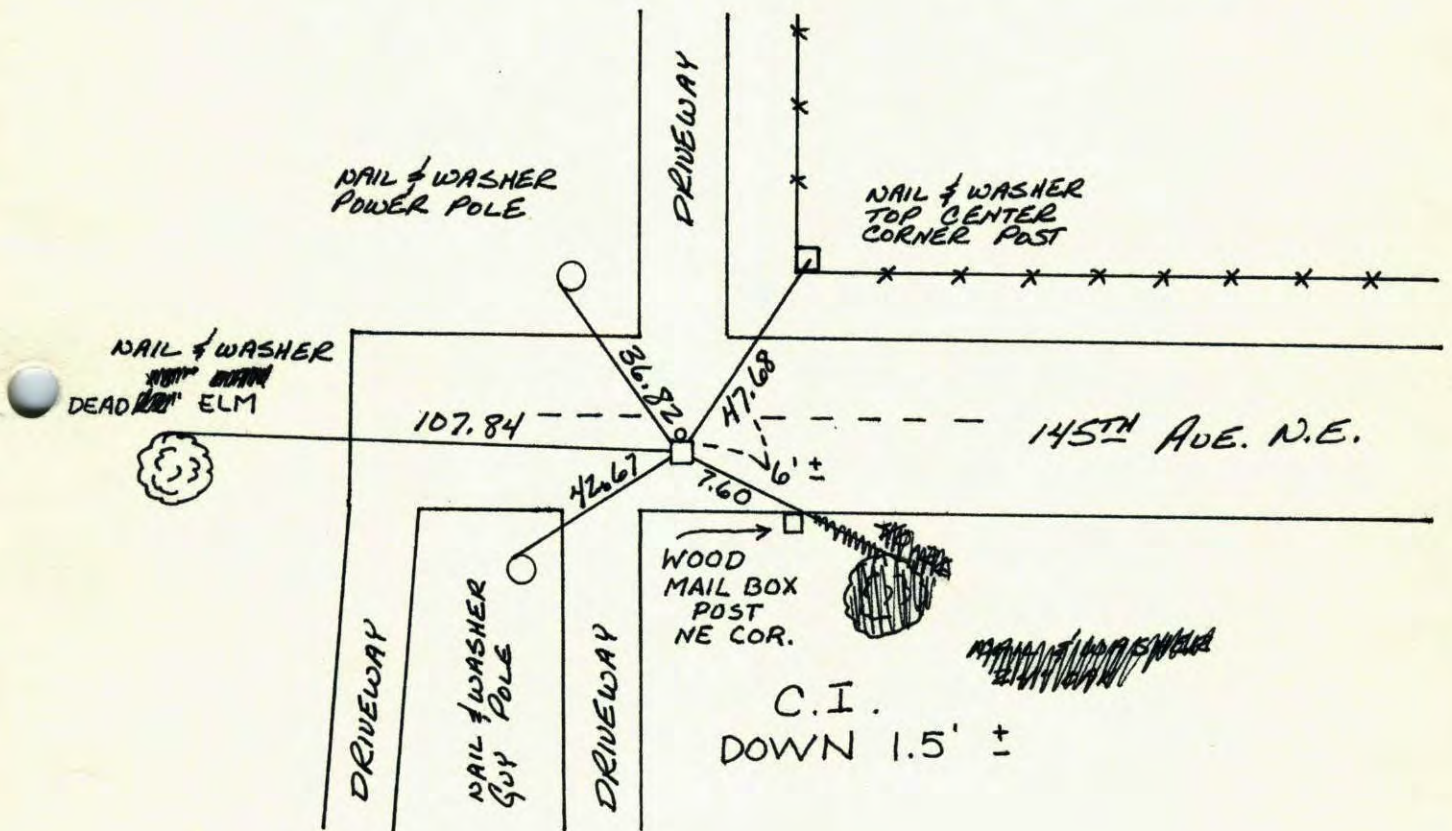
County of Anoka

State of Minnesota

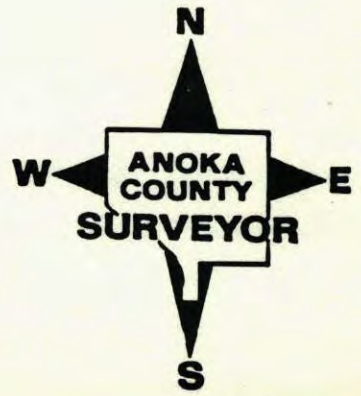
EAST 1/4 Corner of Sec. 29 Township 32 Range 22

I hereby certify that on the 18 day of SEPTEMBER 1964, I found the described corner which was evidenced by ~~WOOD MAIL BOX POST NE COR.~~  
CAST IRON MON. (BROKEN OFF CONCRETE MON.)

and I further certify that to perpetuate the location of said corner, I did, at the exact location thereof, place a permanent marker consisting of ~~WOOD MAIL BOX POST NE COR.~~ CAST IRON. which reference or witness monuments are located in the manner following:

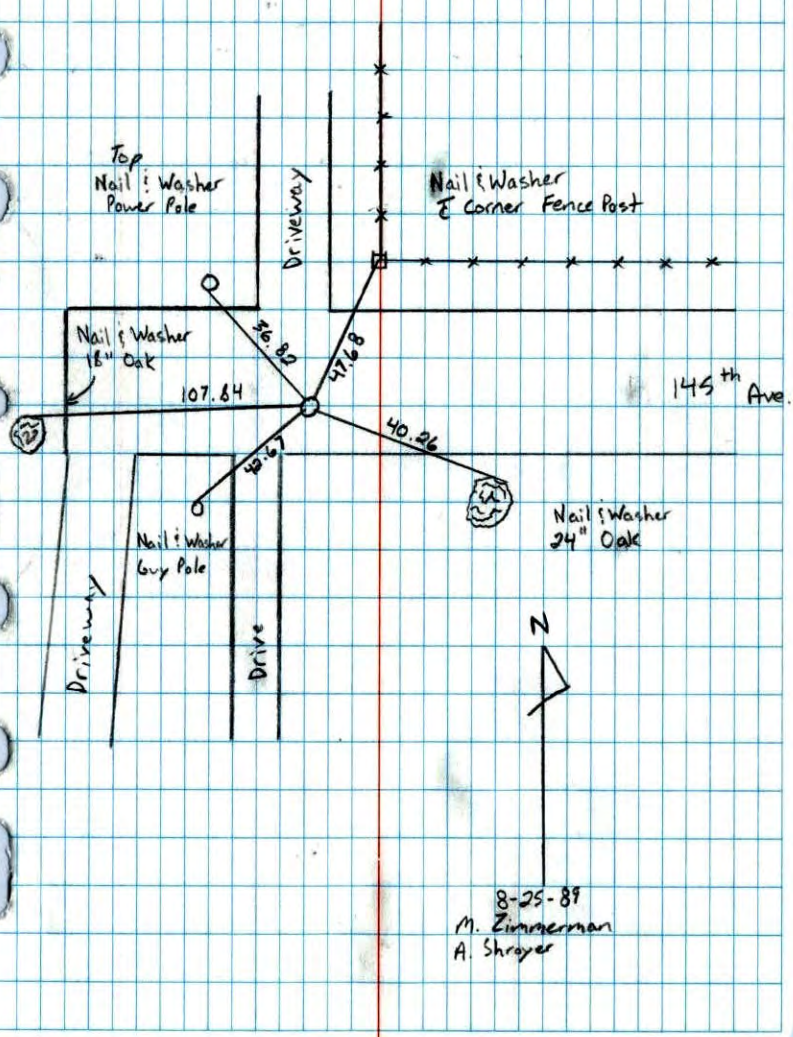


Revised date	Revised date	Revised date
8-5-85		
8-25-89		
RESET 8-24-95		



East 1/4 Corner Sec. 29 T32 R22

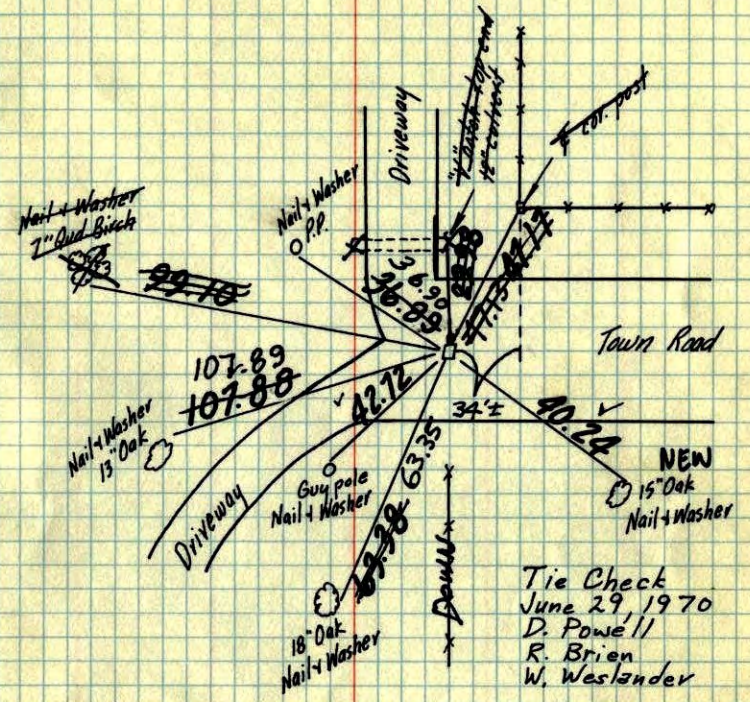
Retired Cast Iron Monument



NO. 446 TELEPHONE

E 1/4 Cor. Sec. 29, T 32, R. 22

4' x 5' Conc. top broken off down 0.5' ±  
Placed 1/2" Iron pipe on North face  
5' ± South of Centerline.



Tie Check  
June 29, 1970  
D. Powell  
R. Brien  
W. Westlander

Tie Check  
June 12, 1973  
B. Olson  
D. Brien  
D. Farmer

TIECHECK  
8-11-76  
G. ADAMS  
S. BRIEN  
J. STEPHENS

TIE CHECK  
8-2-79  
B. STEPHENS  
D. STEPHENS  
P. ROSS  
TEMP. 85° TAPE #2

Sept. 18, 64  
M. D. Anderson  
J. Oliver  
G. Mills

TEMPERATURE CORRECTED  
AND HORIZONTALLY  
TAPED MEASUREMENTS

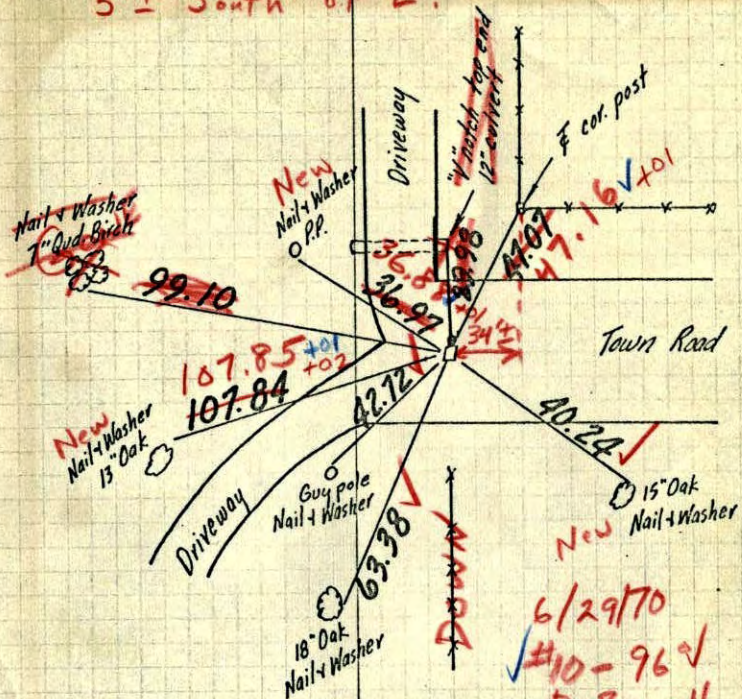
ROLAND W. ANDERSON  
COUNTY SURVEYOR  
ANOKA COUNTY, MINNESOTA

42

E 1/4 Cor. Sec. 29, T 32, R. 22

4" x 5" Conc. top broken off down 0.5"  
Placed 1/2" Iron pipe on North face

5'± South of E.



6/29/70  
#10-96  
D. Powell  
R. Brien  
W. Westlander

Sept. 18, 64

M. D. Anderson  
J. Oliver  
G. Mills

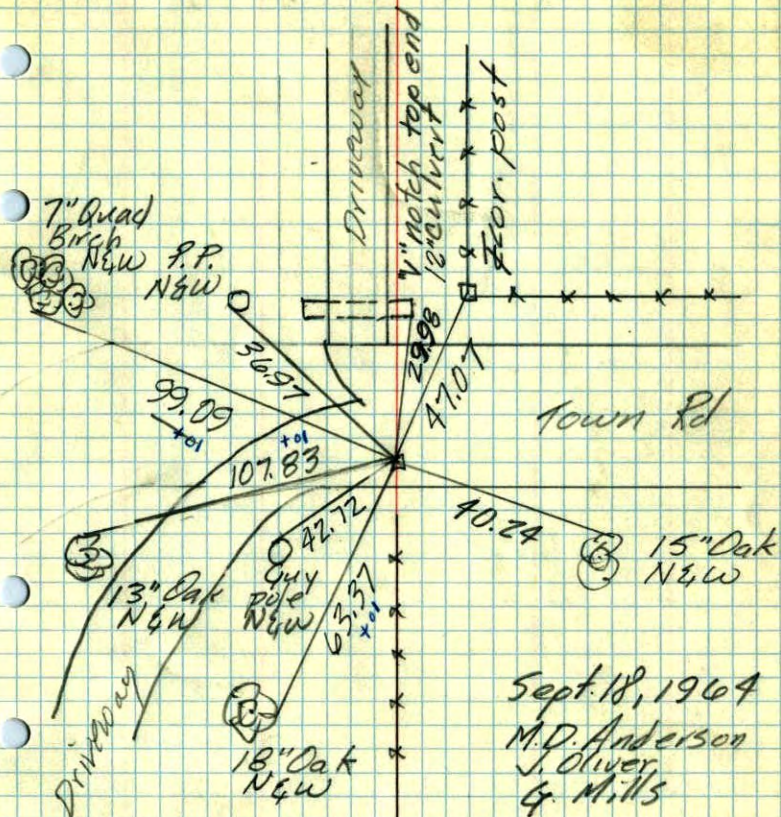
TEMPERATURE CORRECTED  
AND HORIZONTALLY  
TAPED MEASUREMENTS

ROLAND W. ANDERSON  
COUNTY SURVEYOR  
ANOKA COUNTY, MINNESOTA

32

E 1/4 Cor. Sec. 29-T~~32~~R22found 4" x 5" Conc. top broken  
off down 0.5"

place 1/2" Iron pipe on N. face



Sept. 18, 1964  
M. D. Anderson  
J. Oliver  
G. Mills  
Temp. 68°  
Tape 1