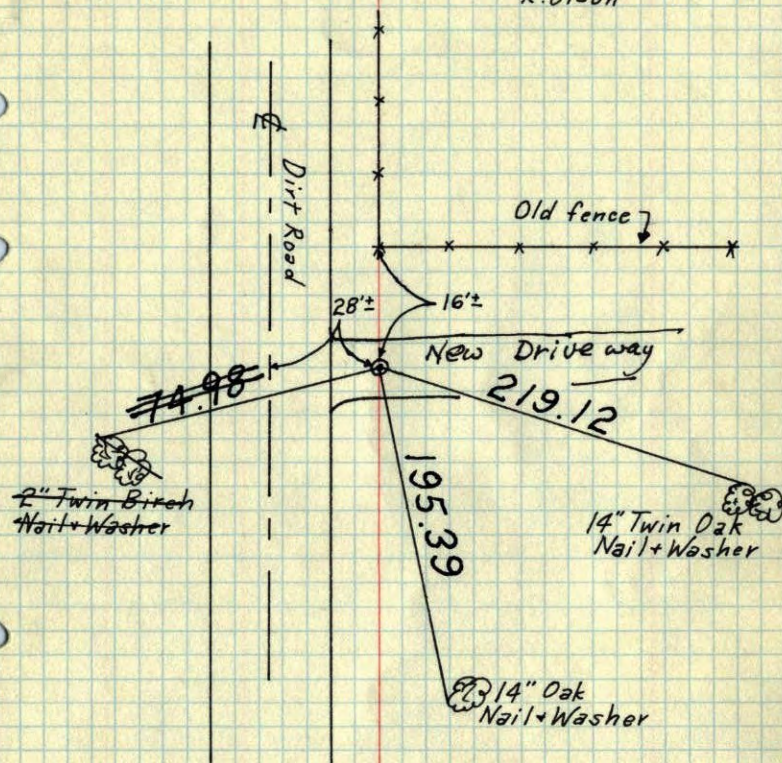


W $\frac{1}{16}$ Cor. of NW $\frac{1}{4}$ Sec. 1-T32-R22Found $\frac{3}{4}$ " Iron Pipe flush.December 27, 1968
H. Larson
R. OlsonPIPE GONE
7-31-79
B. STEPHENSCould not find pipe
6/5/73.

Ties all Present.

COULDN'T LOCATE PIPE
ALL TIES PRESENT
8-4-76
G. ADAMSTEMPERATURE CORRECTED
AND HORIZONTALLY
TAPED MEASUREMENTSROLAND W. ANDERSON
COUNTY SURVEYOR
ANOKA COUNTY, MINNESOTAW $\frac{1}{16}$ Cor. of NW $\frac{1}{4}$ Sec. 1 T32 R22Found & Tied $\frac{3}{4}$ " iron pipe flushDec. 27, 1968
N $\sqrt{24}$ $\pm 5V$
H. Larson
R. Olson