

# CERTIFICATE OF LOCATION OF GOVERNMENT CORNER

County of Anoka

State of Minnesota

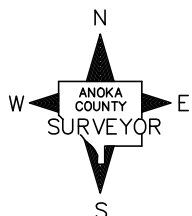
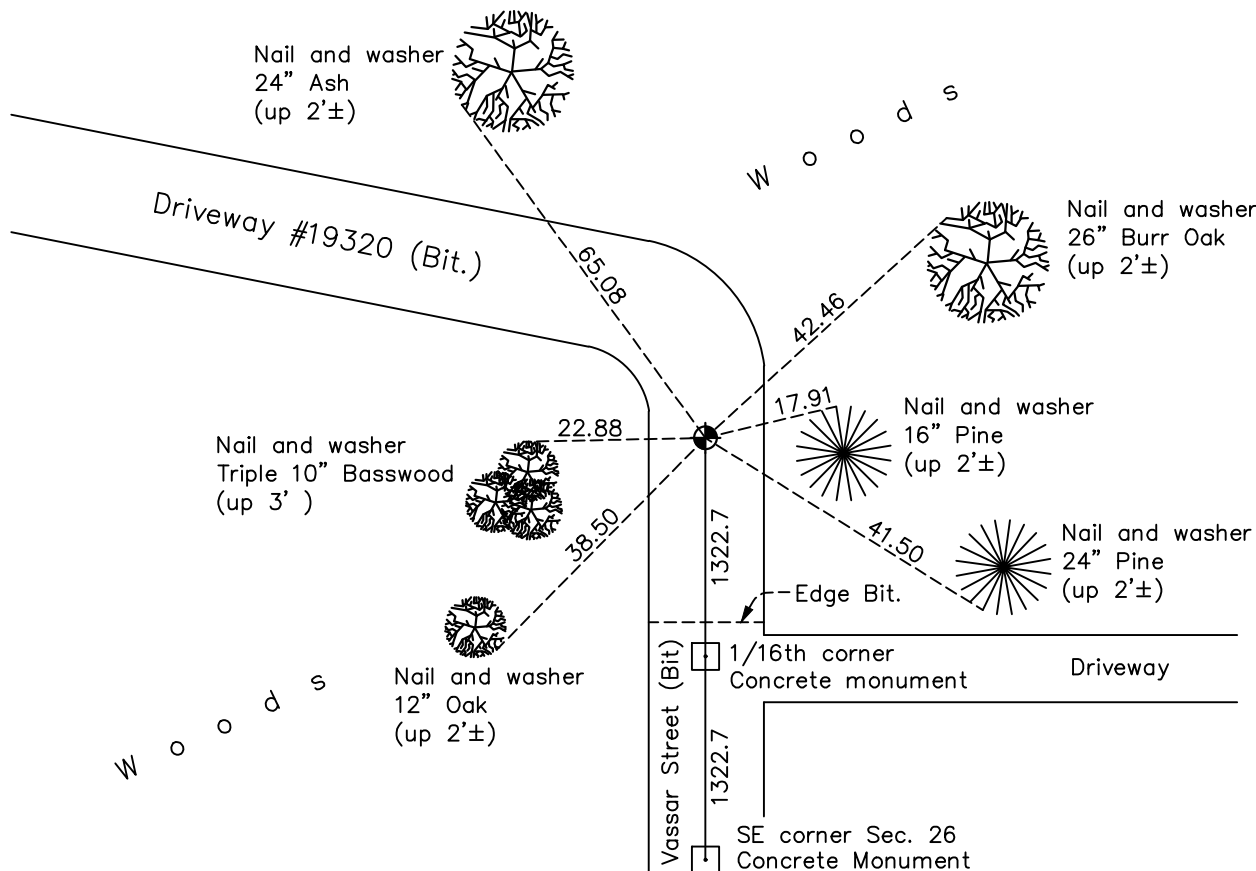
## East 1/4 Corner of Sec. 26 Township 33 Range 22

On the 26th day of August, 1968, the described corner was evidenced by a 1" iron pipe and Don Hult ties

and to perpetuate the location of said corner, at the exact location thereof, a permanent marker was placed consisting of a cast iron monument

AND on the 3rd day of March, 2023, said permanent marker was found flush and the position was verified to published coordinates by ACS RTK GPS method

Updated reference ties are as shown below.



N.A.D. 1983 Coordinates  
(1996 Adjustment)

County Project Coordinates	
Northing	<u>203459.5232</u>
Easting	<u>558254.5868</u>
Date	<u>5/25/04</u>

Revision Date  
**10/16/2023**

I hereby certify that this United States public land survey monument record is correct and complete to the best of my knowledge and belief.  
*David Zieglmeier* Date 12/8/23  
David Zieglmeier Anoka County Surveyor  
Minnesota License Number 46179

# HISTORY OF GOVERNMENT CORNER

Page No. 112

County of Anoka

State of Minnesota

## East 1/4 Corner of Sec. 26 Township 33 Range 22

### **CORNER HISTORY:**

August 26, 1968 - Found 1" iron pipe down 0.5'± using Don C. Hult ties. Updated ties.

1971 - Found 2 iron pipes down 0.1' and set a cast iron monument according to ties.

July 29, 1975 - Found cast iron monument and updated ties.

July 31, 1978 - Found cast iron monument and updated ties.

August 14, 1981 - Found cast iron monument and updated ties.

November 2, 1990 - Found cast iron monument and updated ties.

May 25, 2004 - Established NAD 1983 (1996 adj.) Anoka County project coordinates by static GPS methods.

July 5, 2004 - Found cast iron monument and updated ties.

August 17, 2004 - Found cast iron monument broken and replaced with a cast iron monument down 0.5'±.  
Updated ties.

August 20, 2014 - Found cast iron monument broken down 1'±. Checked position of center fin and determined monument is leaning northeasterly.

October 10, 2014 - Set temporary p.k. nail using corner ties and verified the position using static GPS methods.

November 7, 2014 - Set cast iron monument flush on top of leaning partial broken monument below using static GPS methods. Updated ties.

February 28, 2019 - Found cast iron monument flush. Verified position by VRS GPS methods. Updated ties.

June 17, 2022 - Found cast iron monument flush, Verified position by VRS GPS method and Updated ties.

March 3, 2023 - Found cast iron monument. Verified position by RTK GPS methods.