

CERTIFICATE OF LOCATION OF GOVERNMENT CORNER

County of Anoka

State of Minnesota

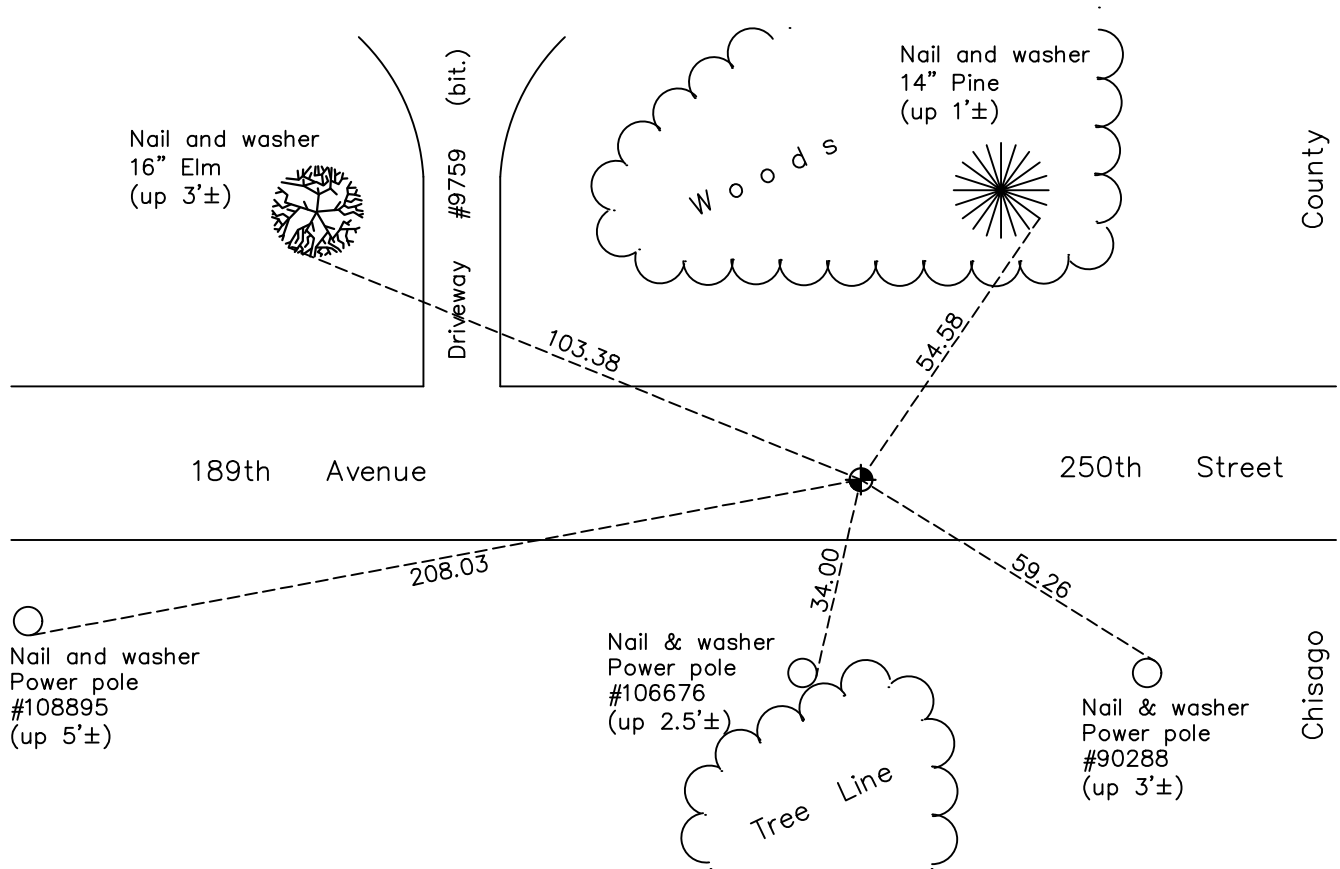
Southeast Corner of Sec. 25 Township 33 Range 22

On the 28th day of October, 1964, the described corner was evidenced by a "Chisago County" cast iron monument set by Don Hult

and to perpetuate the location of said corner, at the exact location thereof, a permanent marker was placed consisting of the same "Chisago County" cast iron monument

AND on the 13th day of June, 2022, said permanent marker was found flush and the ties were updated

Updated reference ties are as shown below.



Revision Date
12/07/2022

N.A.D. 1983 Coordinates
 (1996 Adjustment)

County Project Coordinates	
Northing	<u>200710.8855</u>
Easting	<u>563555.6617</u>
Date	<u>7/02/03</u>

I hereby certify that this United States public land survey monument record is correct and complete to the best of my knowledge and belief.

David Zieglmeier Date 12/8/23

David Zieglmeier Anoka County Surveyor
 Minnesota License Number 46179

HISTORY OF GOVERNMENT CORNER

Page No. 114

County of Anoka

State of Minnesota

Southeast Corner of Sec. 25 Township 33 Range 22

CORNER HISTORY:

October 28, 1964 - Set "Chisago County" cast iron monument and established ties to monument by Don Hult.

July 6, 1967 - Found "Chisago County" cast iron monument down 0.8'± and updated ties.

June 28, 1971 - Found cast iron monument and updated ties.

July 30, 1975 - Found cast iron monument and updated ties.

August 3, 1978 - Found "Chisago County" cast iron monument down 0.8'± and updated ties.

August 10, 1981 - Found cast iron monument and updated ties.

December 26, 1990 - Found cast iron monument and updated ties.

March 12, 2001 - Found "Chisago County" cast iron monument under blacktop road. Reset "Chisago County" cast iron monument flush and updated ties.

July 2, 2003 - Found cast iron monument and updated ties. Established NAD 1983 (1996 adj.) Anoka County project coordinates by static GPS methods.

August 21, 2014 - Found "Chisago County" cast iron monument. Verified position by VRS GPS methods. Updated ties.

March 1, 2019 - Found "Chisago County" cast iron monument. Verified position by VRS GPS methods. Updated ties.

June 13, 2022 - Found "Chisago County" cast iron monument flush, Verified position by VRS GPS method and Updated ties.