

CERTIFICATE OF LOCATION OF GOVERNMENT CORNER

County of Anoka

State of Minnesota

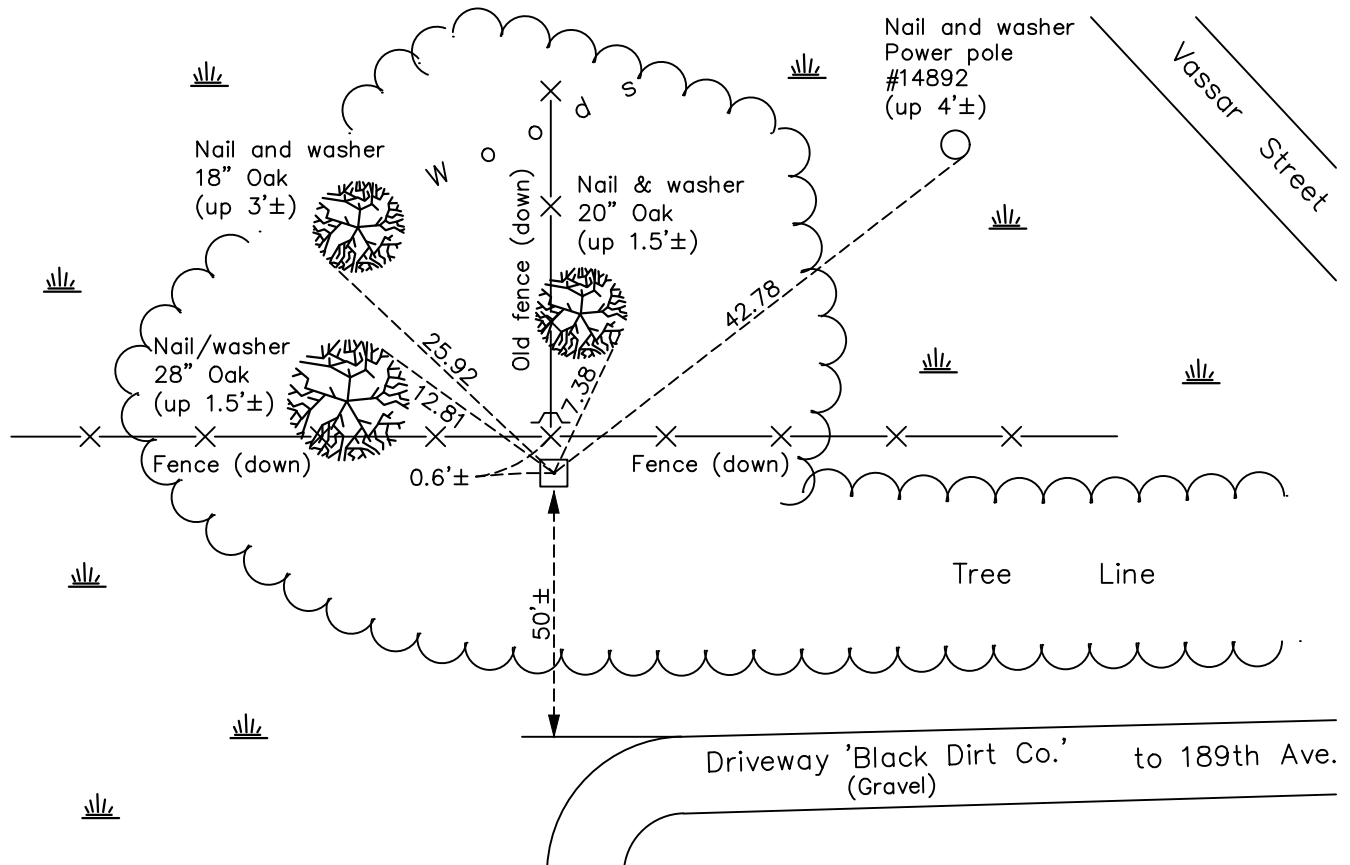
Southwest Corner of Sec. 25 Township 33 Range 22

On the 10th day of September, 1968, the described corner was evidenced by a 4" X 4" concrete monument

and to perpetuate the location of said corner, at the exact location thereof, a permanent marker was placed consisting of the same concrete monument with a sign and post on the north side

AND on the 17th day of June, 2022, said permanent marker was found up 0.4'± and the ties were updated

Updated reference ties are as shown below.



Revision Date
 12/07/2022

N.A.D. 1983 Coordinates
(1996 Adjustment)

County Project Coordinates	
Northing	<u>200814.0066</u>
Easting	<u>558294.7210</u>
Date	<u>5/18/04</u>

I hereby certify that this United States public land survey monument record is correct and complete to the best of my knowledge and belief.

David Zieglmeier Date 12/8/23

David Zieglmeier Anoka County Surveyor
 Minnesota License Number 46179

HISTORY OF GOVERNMENT CORNER

Page No. 117

County of Anoka

State of Minnesota

Southwest Corner of Sec. 25 Township 33 Range 22

CORNER HISTORY:

September 10, 1968 - Found 4" square concrete monument up 1'± and updated ties.

June 30, 1971 - Found concrete monument and updated ties.

July 29, 1975 - Found concrete monument and updated ties.

August 2, 1978 - Found concrete monument and updated ties.

August 25, 1981 - Found concrete monument and updated ties.

November 2, 1990 - Found concrete monument and updated ties.

May 18, 2004 - Established NAD 1983 (1996 adj.) Anoka County project coordinates by static GPS methods.

August 20, 2014 - Found concrete monument up 1.3'± and slightly leaning south. Checked corner ties.

October 10, 2014 - Found concrete monument and verified position by static GPS methods.

October 23, 2014 - Reset same concrete monument up 0.4'± using static GPS methods. Updated ties.

March 4, 2019 - Found concrete monument up 0.4'± and updated ties.

June 17, 2022 - Found concrete monument up 0.4'±, verified position by VRS GPS method and updated ties.