

CERTIFICATE OF LOCATION OF GOVERNMENT CORNER

County of Anoka

State of Minnesota

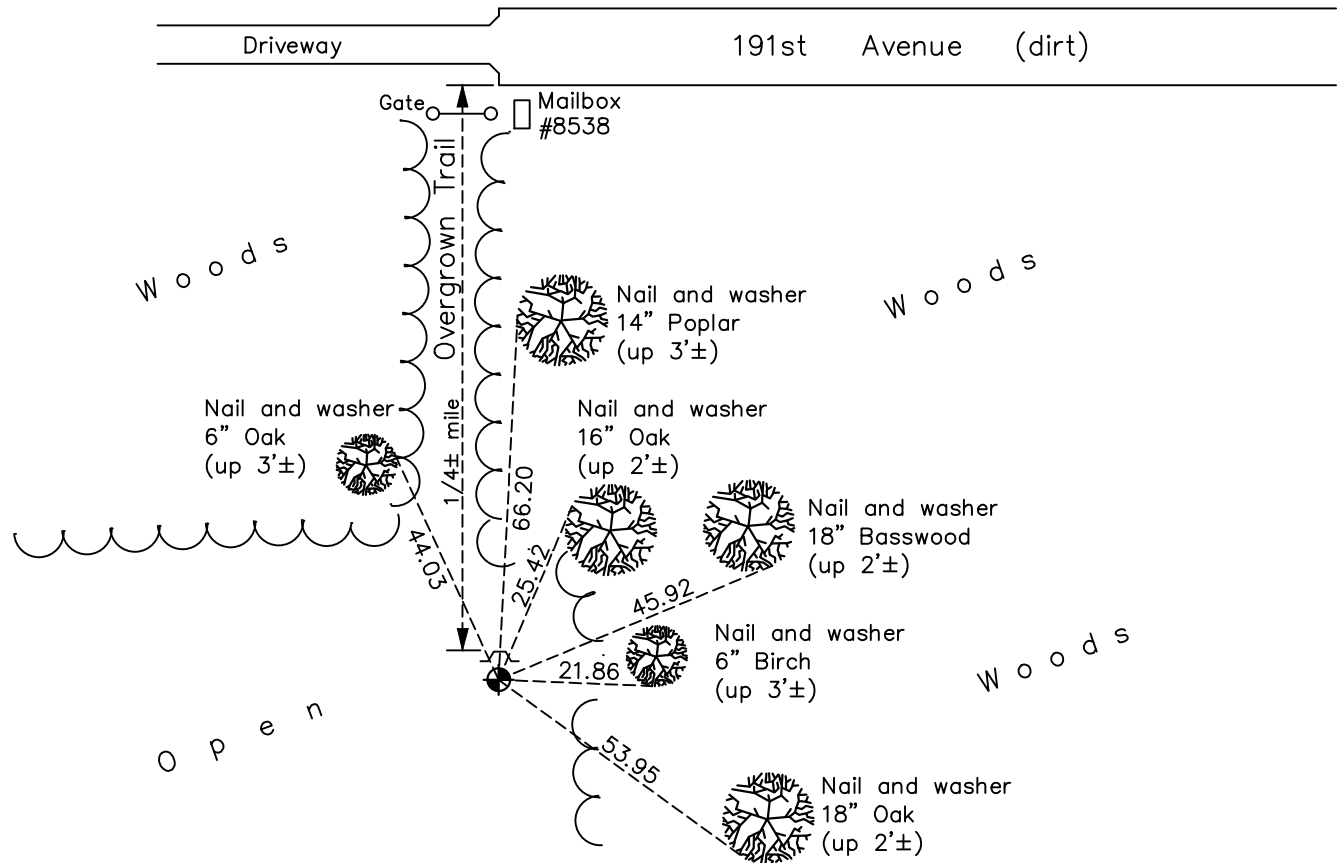
North 1/4 Corner of Sec. 35 Township 33 Range 22

On the 26th day of February, 1986, the described corner was evidenced by area resurvey

and to perpetuate the location of said corner, at the exact location thereof, a permanent marker was placed consisting of a cast iron monument with sign and post on the north side

AND on the 27th day of June, 2022, said permanent marker was found down 0.5'± and the ties were updated

Updated reference ties are as shown below.



Revision Date
12/07/2022

N.A.D. 1983 Coordinates
(1996 Adjustment)

County Project Coordinates	
Northing	200792.2180
Easting	555618.1309
Date	5/25/04

I hereby certify that this United States public land survey monument record is correct and complete to the best of my knowledge and belief.
David Zieglmeier Date 12/8/23
 David Zieglmeier Anoka County Surveyor
 Minnesota License Number 46179

HISTORY OF GOVERNMENT CORNER

Page No. 117A

County of Anoka

State of Minnesota

North 1/4 Corner of Sec. 35 Township 33 Range 22

CORNER HISTORY:

February 26, 1986 - Set cast iron monument using area resurvey. Established ties to monument.

August 26, 1987 - Found cast iron monument and updated ties.

May 25, 2004 - Found cast iron monument and updated ties. Established NAD 1983 (1996 adj.) Anoka County project coordinates by static GPS methods.

August 20, 2014 - Found cast iron monument and updated ties.

May 2, 2019 - Found cast iron monument down 0.5'±. Verified position by VRS GPS methods. Updated ties.

June 27, 2022 - Found cast iron monument down 0.5'±, Verified position by VRS GPS method. Updated ties.