

CERTIFICATE OF LOCATION OF GOVERNMENT CORNER

County of Anoka

State of Minnesota

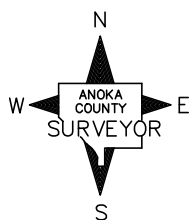
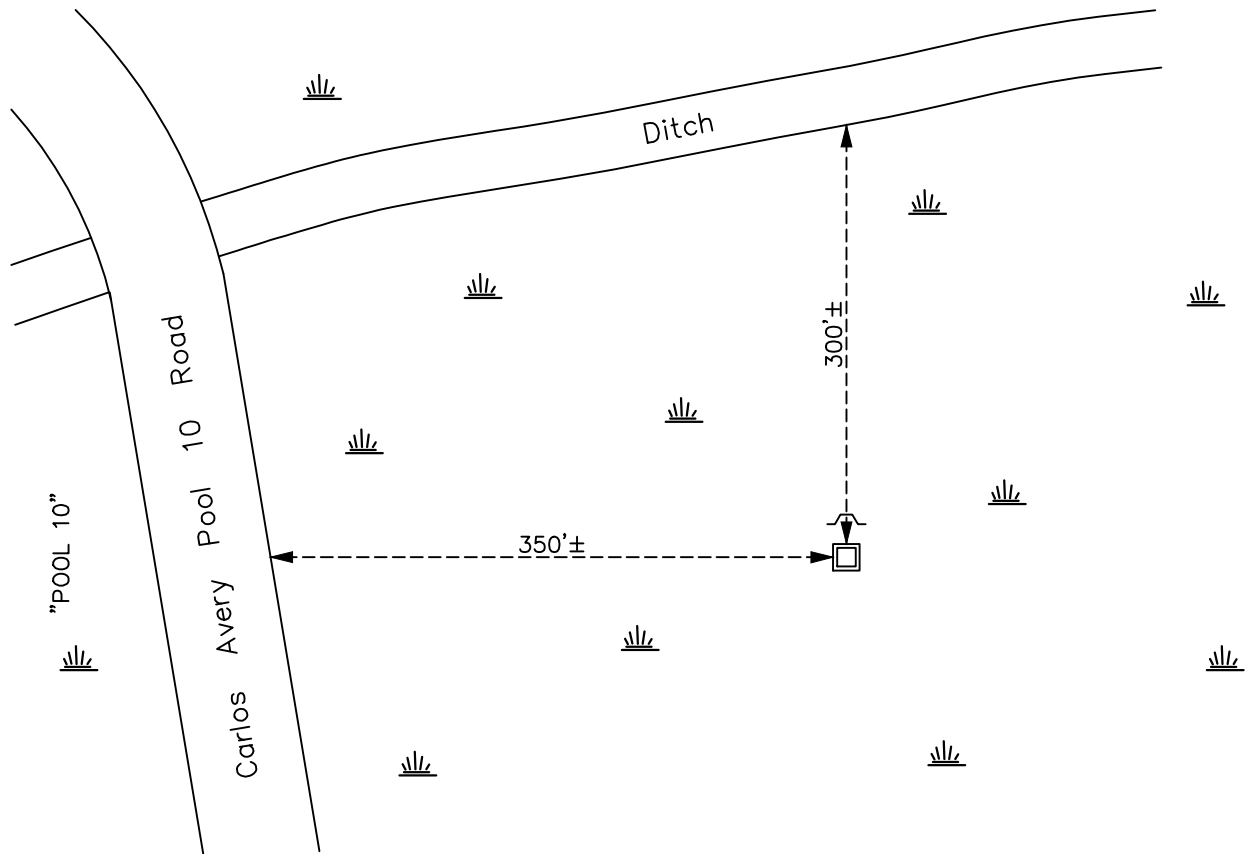
Northwest Corner of Sec. 35 Township 33 Range 22

On the 8th day of January, 1985, the described corner was evidenced by a concrete monument with a steel post on the east side

and to perpetuate the location of said corner, at the exact location thereof, a permanent marker was placed consisting of the same concrete monument and steel post

AND on the 6TH day of July, 2023, said permanent marker was removed concrete monument & replaced with 2" sq Telspar w/ aluminum cap can punch mark, set up 1.5'±. No Ties available.

Updated reference ties are as shown below.



Revision Date
 10/05/2023

N.A.D. 1983 Coordinates
 (2011 Adjustment)

County Project Coordinates	
Northing	<u>200770.5564</u>
Easting	<u>552941.9698</u>
Date	<u>3/20/06</u>

I hereby certify that this United States public land survey monument record is correct and complete to the best of my knowledge and belief.

David Zieglmeier Date 12/8/23

David M. Zieglmeier, Anoka County Surveyor
 Minnesota License Number 46179

HISTORY OF GOVERNMENT CORNER

Page No. 119

County of Anoka

State of Minnesota

Northwest Corner of Sec. 35 Township 33 Range 22

CORNER HISTORY:

January 8, 1985 - Found concrete monument with a steel post on the east side. No corner ties available.

August 5, 1987 - Found concrete monument with a steel post on the east side. No corner ties available.

March 20, 2006 - Established NAD 1983 (1996 adj.) Anoka County project coordinates by static GPS methods.

July 6, 2023 - Removed found concrete monument and replaced with 6' x 2" square telspar with aluminum cap and punch mark, set up 1.5'±. Monument set to published coordinates with ACS RTK GPS method. No ties available. Sign and post added to North side.