

# CERTIFICATE OF LOCATION OF GOVERNMENT CORNER

County of Anoka

State of Minnesota

E 1/16 Corner of Sec. 27 Township 33 Range 22

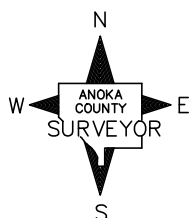
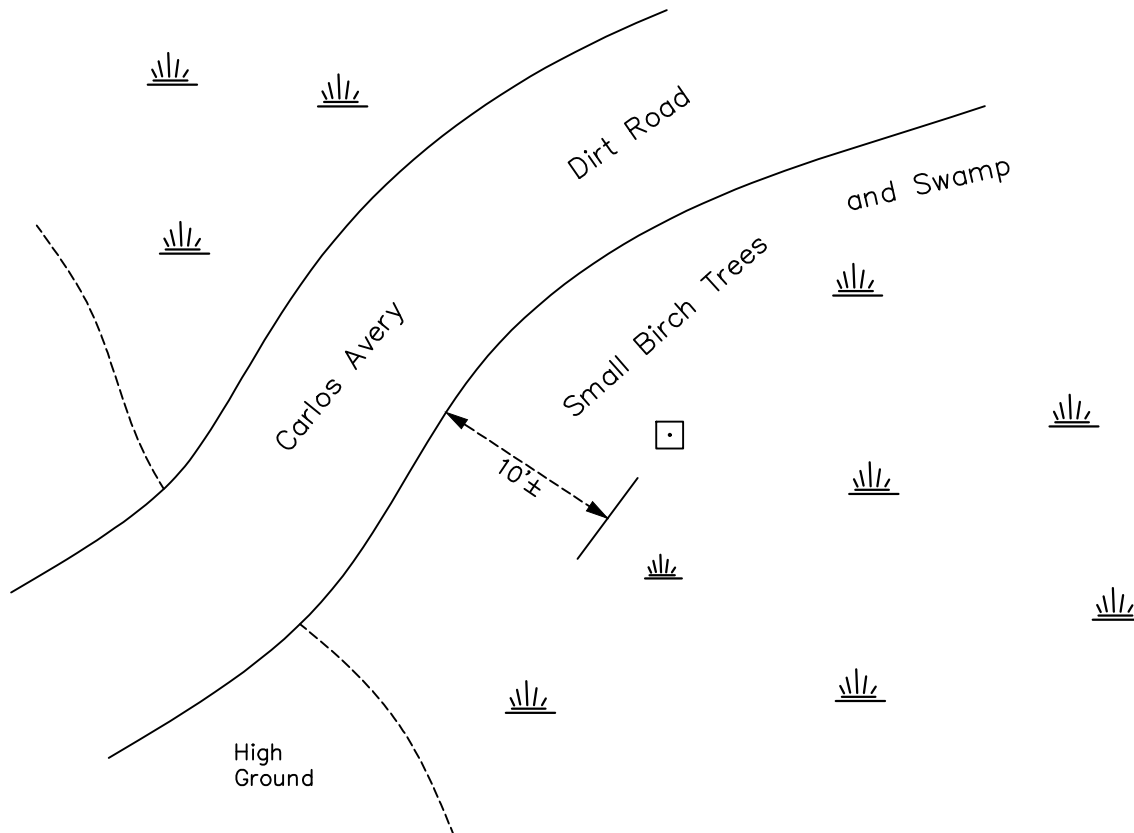
on East line of SE 1/4

On the 10th day of September, 1975, the described corner was evidenced by a concrete marker

and to perpetuate the location of said corner, at the exact location thereof, a permanent marker was placed consisting of concrete monument

AND on the 20th day of June, 2022, said permanent marker was found up 1'± with no  
ties available

Updated reference ties are as shown below.



Revision Date

12/08/2022

N.A.D. 1983 Coordinates  
(1996 Adjustment)

County Project Coordinates

Northing 202091.011Easting 552939.087

Date \_\_\_\_\_

I hereby certify that this United States public land survey monument record is correct and complete to the best of my knowledge and belief.

*David Zieglmeier* Date 12/8/23

David Zieglmeier Anoka County Surveyor

Minnesota License Number 46179

# HISTORY OF GOVERNMENT CORNER

Page No. 139

County of Anoka

State of Minnesota

Witness Corner of Sec. 36 Township 33 Range 22  
(on east line of section)

## **CORNER HISTORY:**

Date:

September 10, 1975 - Found Concrete monument, up 1'± with Carlos Avery Signs on the North & West sides

August 24, 1981; June 17, 1985; August 26, 1987 - Found concrete monument up 1'± with Carlos Avery Signs on the North & West sides.

June, 2022 - Found concrete monument up 1'± and checked position of monument using VRS GPS method.  
No ties available.