

CERTIFICATE OF LOCATION OF GOVERNMENT CORNER

County of Anoka

State of Minnesota

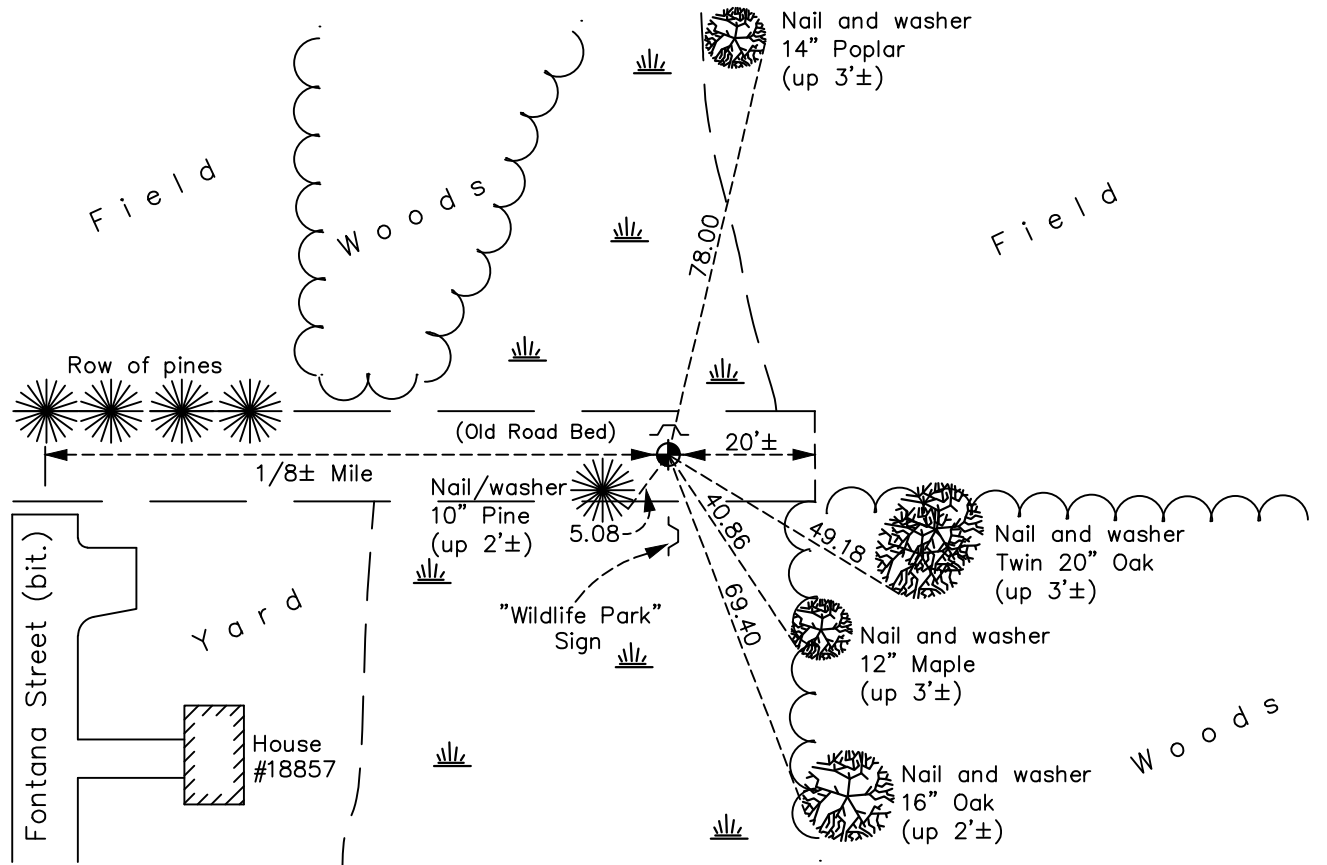
Northeast Corner of Sec. 31 Township 33 Range 22

On the 23rd day of April, 1965, the described corner was evidenced by a broken
concrete monument

and to perpetuate the location of said corner, at the exact location thereof, a permanent marker
was placed consisting of a cast iron monument with a sign and post on the north side

AND on the 21st day of June, 2022, said permanent marker was found flush and the
ties were updated

Updated reference ties are as shown below.



Revision Date
 12/07/2022

N.A.D. 1983 Coordinates
 (1996 Adjustment)

County Project Coordinates	
Northing	<u>200835.1833</u>
Easting	<u>537122.2887</u>
Date	<u>5/17/04</u>

I hereby certify that this United States public land survey monument record is correct and complete to the best of my knowledge and belief.
David Zieglmeier Date 12/8/23
 David Zieglmeier Anoka County Surveyor
 Minnesota License Number 46179

HISTORY OF GOVERNMENT CORNER

Page No. 128

County of Anoka

State of Minnesota

Northeast Corner of Sec. 31 Township 33 Range 22

CORNER HISTORY:

April 23, 1965 - Found 4" square concrete monument down 0.3'± with top broken off and updated ties.

July 5, 1967 - Found concrete monument and updated ties.

June 25, 1971 - Found concrete monument and updated ties.

July 30, 1975 - Found concrete monument and replaced with a cast iron monument. Updated ties.

August 2, 1978 - Found cast iron monument and updated ties.

August 11, 1981 - Found cast iron monument and updated ties.

November 2, 1990 - Found cast iron monument and updated ties.

December 9, 1994 - Found cast iron monument and updated ties.

May 17, 2004 - Established NAD 1983 (1996 adj.) Anoka County project coordinates by static GPS methods.

July 7, 2004 - Found cast iron monument and updated ties.

May 8, 2014 - Found cast iron monument and updated ties.

April 30, 2019 - Found cast iron monument flush. Verified position by VRS GPS methods. Updated ties.

June 21, 2022 - Found cast iron monument flush, Verified position by VRS GPS method and Updated ties.