

CERTIFICATE OF LOCATION OF GOVERNMENT CORNER

County of Anoka

State of Minnesota

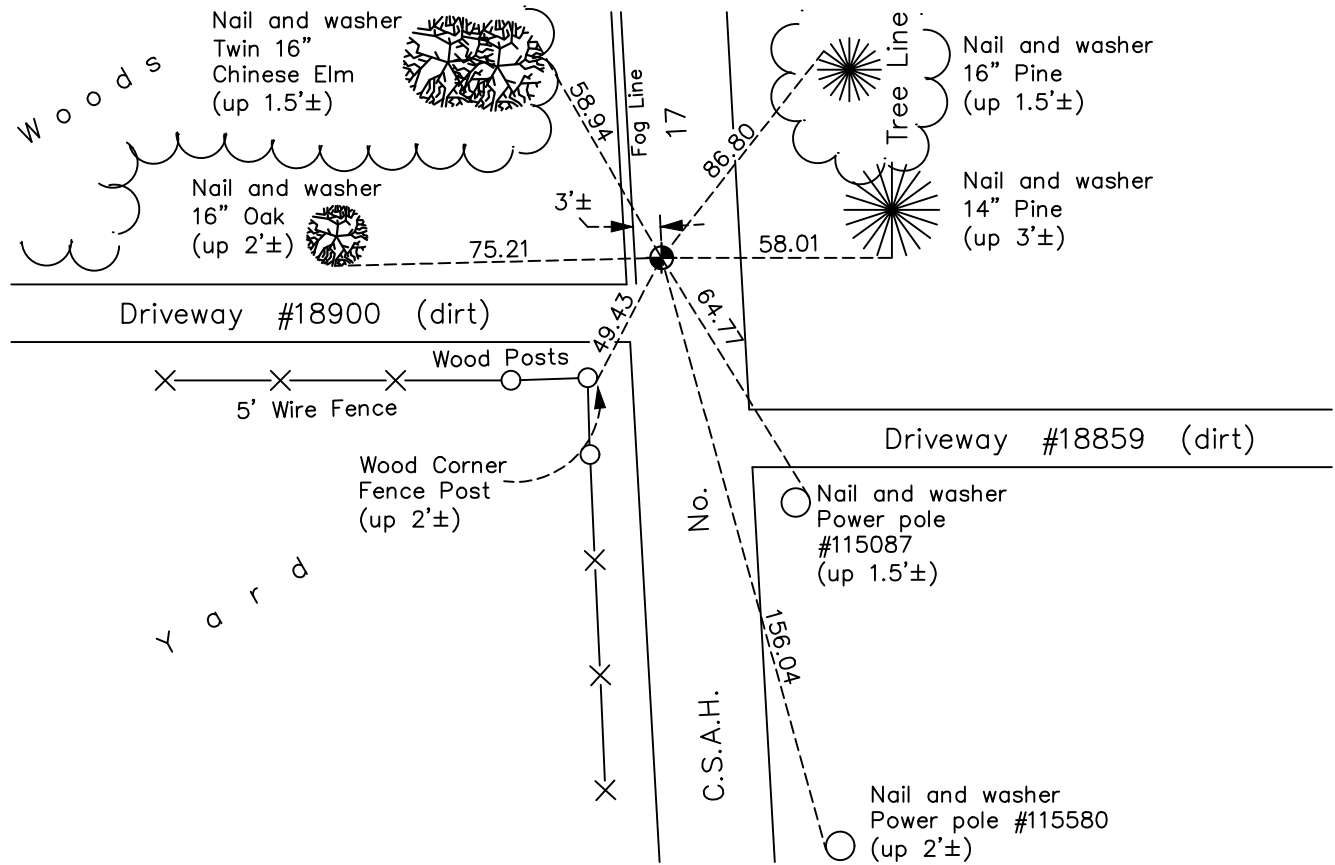
South 1/4 Corner of Sec. 30 Township 33 Range 22

On the 8th day of December, 1966, the described corner was evidenced by area resurvey

and to perpetuate the location of said corner, at the exact location thereof, a permanent marker was placed consisting of a cast iron monument

AND on the 21st day of June, 2022, said permanent marker was found flush and the ties were updated

Updated reference ties are as shown below.



Revision Date
 12/08/2022

N.A.D. 1983 Coordinates
(1996 Adjustment)

| County Project Coordinates | |
|----------------------------|--------------------|
| Northing | <u>200859.0836</u> |
| Easting | <u>534480.0245</u> |
| Date | <u>7/01/03</u> |

I hereby certify that this United States public land survey monument record is correct and complete to the best of my knowledge and belief.

David Zieglmeier Date 12/8/23

David Zieglmeier Anoka County Surveyor
 Minnesota License Number 46179

HISTORY OF GOVERNMENT CORNER

Page No. 129

County of Anoka

State of Minnesota

South 1/4 Corner of Sec. 30 Township 33 Range 22

CORNER HISTORY:

December 8, 1966 - Set cast iron monument using area resurvey. Established ties to monument.

July 3, 1967 - Found cast iron monument and updated ties.

June 25, 1971 - Found cast iron monument and updated ties.

July 31, 1975 - Found cast iron monument and updated ties.

July 28, 1978 - Found cast iron monument and updated ties.

August 13, 1981 - Found cast iron monument and updated ties.

August 28, 1984 - Found cast iron monument and updated ties.

July 1, 2003 - Established NAD 1983 (1996 adj.) Anoka County project coordinates by static GPS methods.

May 8, 2014 - Found cast iron monument. Verified position by VRS GPS methods. Updated ties.

June 11, 2014 - Found cast iron monument and verified position by VRS GPS methods. Monument broke during loosening of top for road overlay project. Needs reset.

June 12, 2014 - Set construction ties and removed monument prior to road overlay.

October 1, 2014 - Set cast iron monument flush using static GPS methods after road overlay. Verified position by VRS GPS methods and updated ties.

March 5, 2019 - Found cast iron monument flush. Verified position by VRS GPS methods. Updated ties.

June 21, 2022 - Found cast iron monument flush, verified position by VRS GPS method and updated ties.