

CERTIFICATE OF LOCATION OF GOVERNMENT CORNER

County of Anoka

State of Minnesota

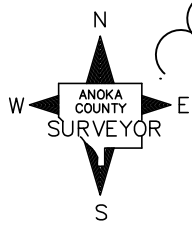
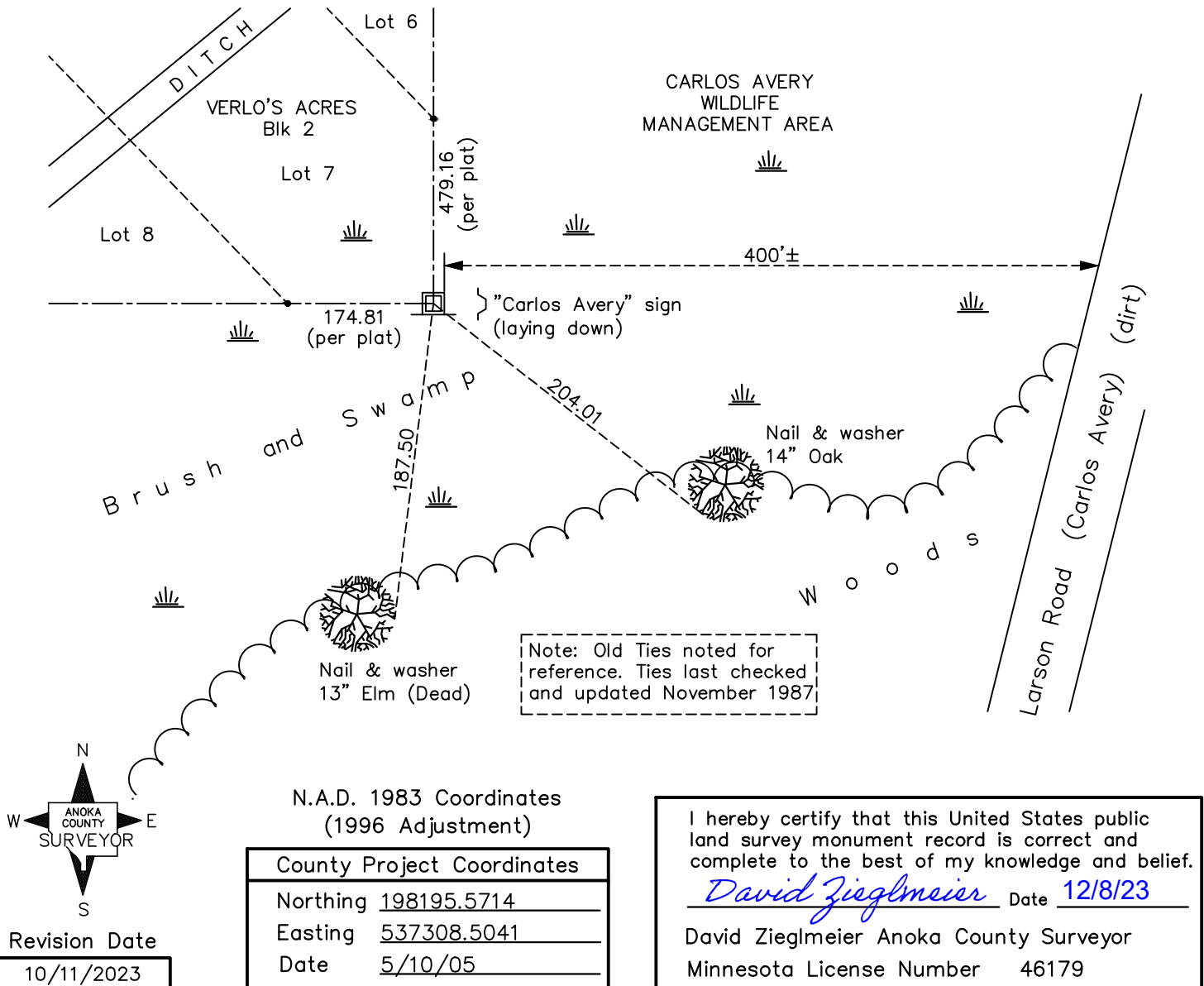
East 1/4 Corner of Sec. 31 Township 33 Range 22

On the 3rd day of May, 1965, the described corner was evidenced by a concrete monument

and to perpetuate the location of said corner, at the exact location thereof, a permanent marker was placed consisting of a red and white square steel Telspar with sign attached, facing South

AND on the 21st day of June, 2022, said permanent marker was found a red and white 2" square steel Telespar monument up 4.5'±, with a sign attached. Ties last updated on 11/18/87.

Updated reference ties are as shown below.



Revision Date
 10/11/2023

N.A.D. 1983 Coordinates
(1996 Adjustment)

County Project Coordinates	
Northing	198195.5714
Easting	537308.5041
Date	5/10/05

I hereby certify that this United States public land survey monument record is correct and complete to the best of my knowledge and belief.

David Zieglmeier Date 12/8/23

David Zieglmeier Anoka County Surveyor
 Minnesota License Number 46179

HISTORY OF GOVERNMENT CORNER

Page No. 132

County of Anoka

State of Minnesota

East 1/4 Corner of Sec. 31 Township 33 Range 22

CORNER HISTORY:

May 3, 1965 - Found broken concrete monument and replaced with a 1 1/4" x 7' red and white iron pipe up 2.5'. Established ties to iron pipe.

July 5, 1967 - Found red and white iron pipe and updated ties.

June 28, 1971 - Found red and white iron pipe and updated ties.

July 30, 1975 - Found red and white iron pipe and updated ties.

November 1, 1982 - Found red and white iron pipe and replaced a new red and white iron pipe. Verified position by area resurvey and updated ties.

November 18, 1987 - Found red and white iron pipe and updated ties.

May 10, 2005 - Established NAD 1983 (1996 adj.) Anoka County project coordinates by static GPS methods.

Unknown date - Missing history on red and white iron pipe being replaced with square steel Telspar monument.

September 30, 2014 - Found square steel Telspar with sign attached up 3'± and verified position by VRS GPS methods. Corner ties not updated.

June 21, 2022 - Found square steel Telspar with sign attached up 4.5'± and verified position by VRS GPS methods. Corner ties not updated.