

CERTIFICATE OF LOCATION OF GOVERNMENT CORNER

County of Anoka

State of Minnesota

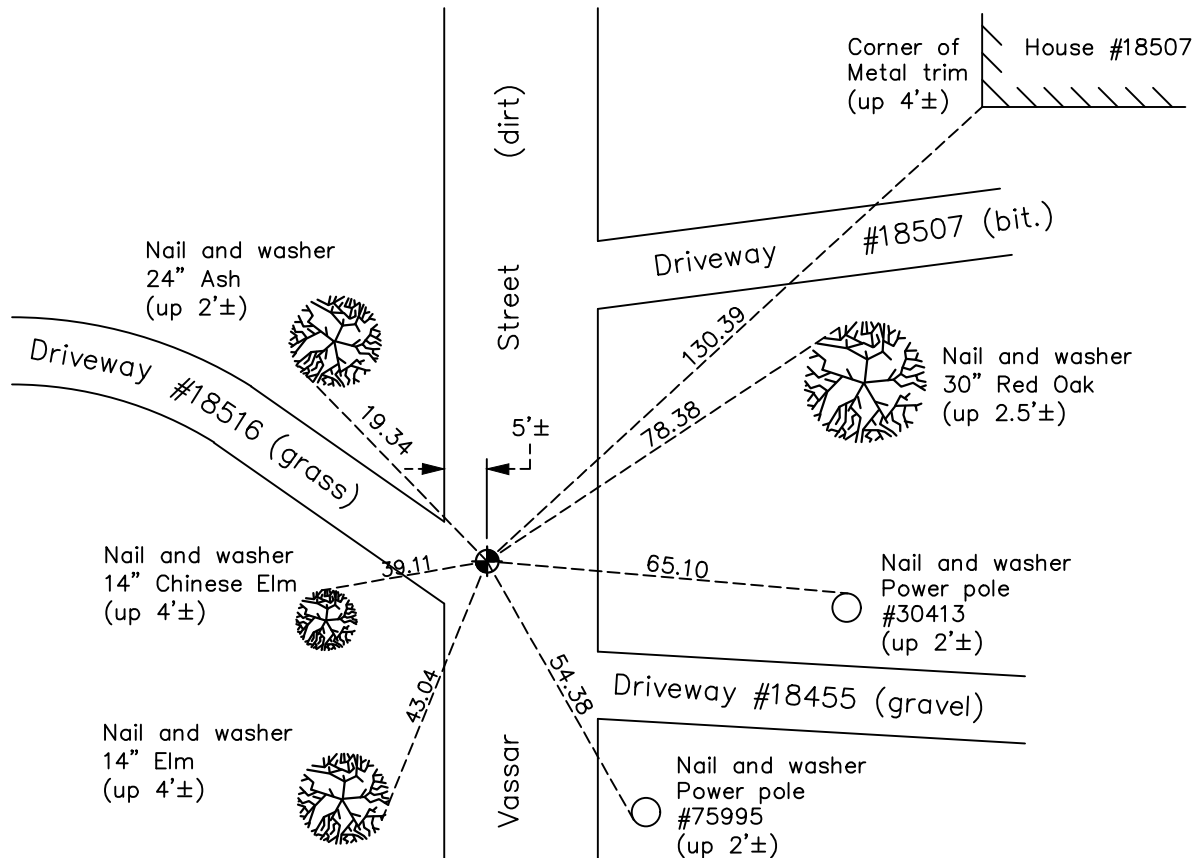
West 1/4 Corner of Sec. 36 Township 33 Range 22

On the ____ day of April, 1968, the described corner was evidenced by a spike

and to perpetuate the location of said corner, at the exact location thereof, a permanent marker was placed consisting of a cast iron monument

AND on the 20th day of June, 2022, said permanent marker was found down 2.5'± and the ties were updated

Updated reference ties are as shown below.



Revision Date
12/08/2022

N.A.D. 1983 Coordinates
 (1996 Adjustment)

County Project Coordinates	
Northing	<u>198159.6370</u>
Easting	<u>558338.3559</u>
Date	<u>5/10/05</u>

I hereby certify that this United States public land survey monument record is correct and complete to the best of my knowledge and belief.

David Zieglmeier Date 12/8/23

David Zieglmeier Anoka County Surveyor
 Minnesota License Number 46179

HISTORY OF GOVERNMENT CORNER

Page No. 137

County of Anoka

State of Minnesota

West 1/4 Corner of Sec. 36 Township 33 Range 22

CORNER HISTORY:

April 1968 - Found railroad spike down 0.2'± in dirt road and established ties to railroad spike by Jim Kurth.

September 23, 1969 - Found railroad spike down 0.2'± and replaced with a cast iron monument down 0.5'±. Updated ties.

June 28, 1971 - Found cast iron monument and updated ties.

July 31, 1975 - Found cast iron monument and updated ties.

July 31, 1978 - Found cast iron monument and updated ties.

August 13, 1981 - Found cast iron monument and updated ties.

December 26, 1990 - Found cast iron monument and updated ties.

May 10, 2005 - Found cast iron monument down 3'± and updated ties. Established NAD 1983 (1996 adj.) Anoka County project coordinates by static GPS methods.

September 5, 2014 - Found cast iron monument down 3'±. Verified position by VRS GPS methods. Updated ties.

March 6, 2019 - Found cast iron monument down 3'±. Verified position by VRS GPS methods. Updated ties.

June 20, 2022 - Found cast iron monument down 2.5'±, Verified position by VRS GPS method. Updated ties.