

# CERTIFICATE OF LOCATION OF GOVERNMENT CORNER

County of Anoka

State of Minnesota

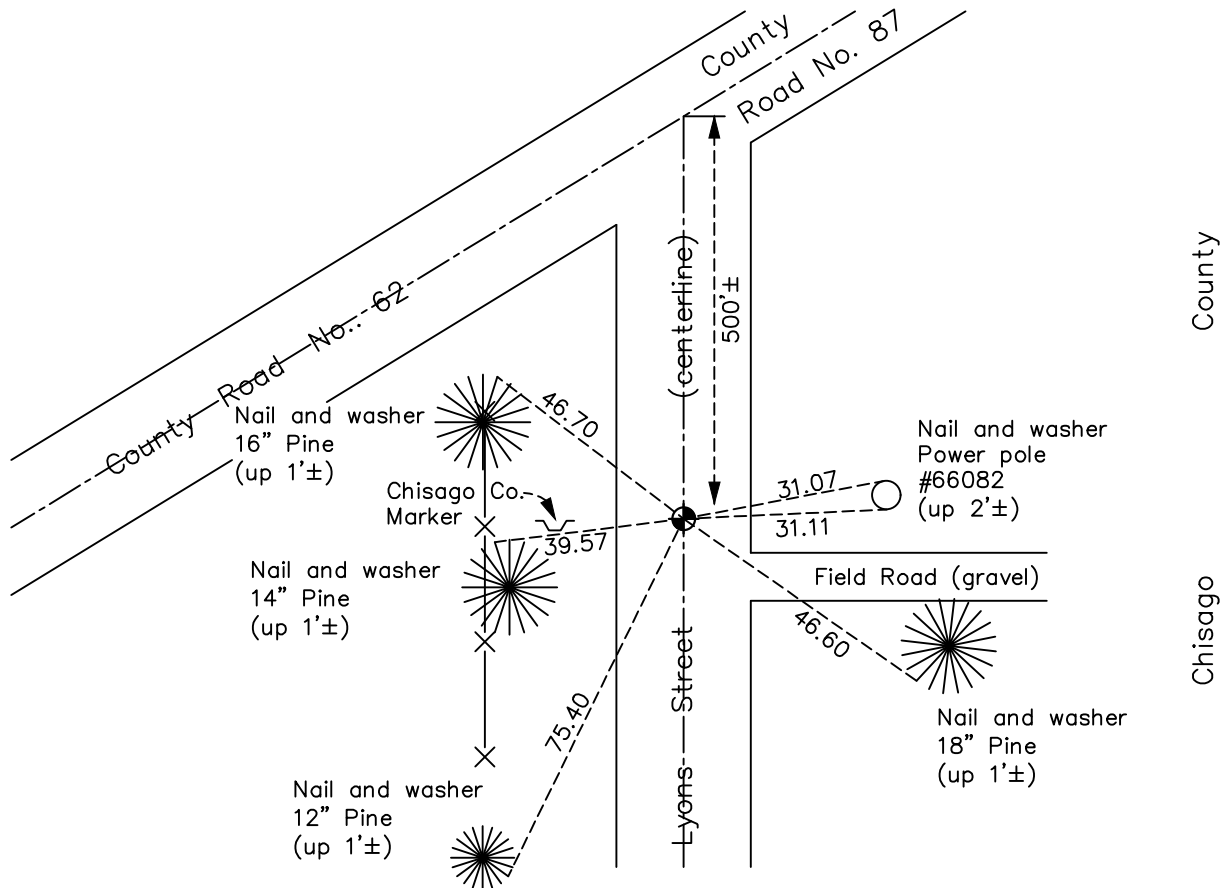
## East 1/4 Corner of Sec. 36 Township 33 Range 22

On the 26th day of July, 1966, the described corner was evidenced by area resurvey

and to perpetuate the location of said corner, at the exact location thereof, a permanent marker was placed consisting of a cast iron monument

AND on the 13th day of June, 2022, said permanent marker was found down 0.1'± and the ties were updated

Updated reference ties are as shown below.



N.A.D. 1983 Coordinates  
(1996 Adjustment)

County Project Coordinates	
Northing	<u>198107.1856</u>
Easting	<u>563575.3411</u>
Date	<u>7/02/03</u>

Revision Date  
**12/08/2022**

I hereby certify that this United States public land survey monument record is correct and complete to the best of my knowledge and belief.

*David Zieglmeier* Date 12/8/23

David Zieglmeier Anoka County Surveyor  
Minnesota License Number 46179

# HISTORY OF GOVERNMENT CORNER

Page No. 138

County of Anoka

State of Minnesota

## East 1/4 Corner of Sec. 36 Township 33 Range 22

### **CORNER HISTORY:**

July 26, 1966 - Set cast iron monument down 0.5'± using area resurvey. Established ties to monument.

July 5, 1967 - Found cast iron monument down 1.5'± and updated ties.

June 28, 1971 - Found cast iron monument and updated ties.

July 31, 1975 - Found cast iron monument and updated ties.

August 2, 1978 - Found cast iron monument and updated ties.

August 10, 1981 - Found cast iron monument down 2'± and updated ties.

October 17, 1990 - Found cast iron monument and updated ties.

July 2, 2003 - Found cast iron monument down 2.5' under blacktop road. Needs raising. Established NAD 1983 (1996 adj.) Anoka County project coordinates by static GPS methods.

August 21, 2014 - Found spike in blacktop road, checked position against corner ties and county coordinates by VRS GPS methods.

October 14, 2014 - Found spike and verified position by static GPS methods.

October 22, 2014 - Set new cast iron monument flush with road, on top of cast iron monument down 2.5'± using static GPS methods. Updated ties.

March 6, 2019 - Found cast iron monument down 0.1'±. Verified position by VRS GPS methods. Updated ties.

June 13, 2022 - Found cast iron monument down 0.1'±. Verified position by VRS GPS method. Updated ties.