

# CERTIFICATE OF LOCATION OF GOVERNMENT CORNER

County of Anoka

State of Minnesota

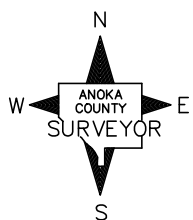
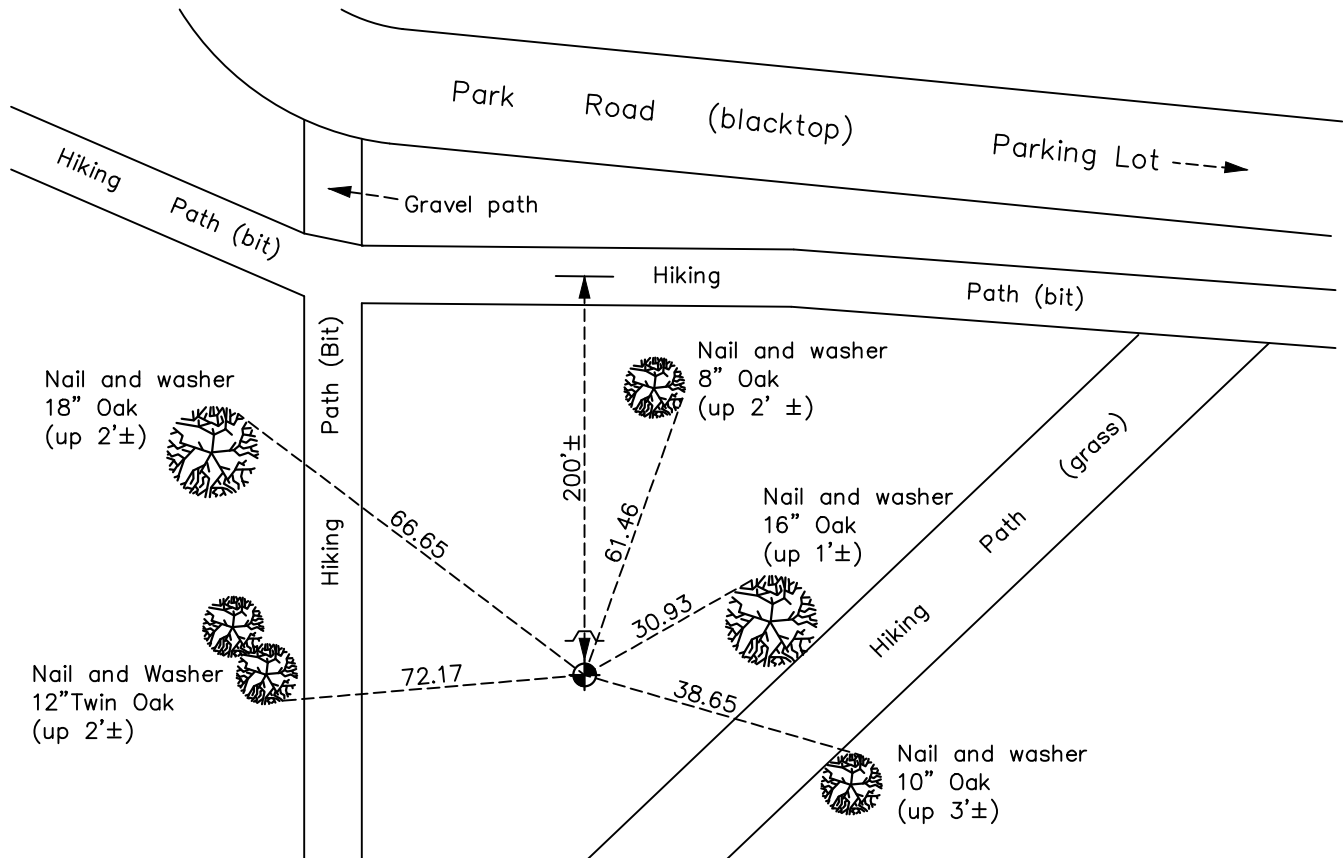
## Northeast Corner of Sec. 2 Township 31 Range 24

On the 1st day of November, 1966, the described corner was evidenced by \_\_\_\_\_  
3/4" pinchtap pipe found matching Cartwright 1944 ties

and to perpetuate the location of said corner, at the exact location thereof, a permanent marker was placed consisting of a cast iron monument

AND on the 11th day of July, 2022, said permanent marker was found down 0.5'± with  
a sign and post on the north side and the ties were updated

Updated reference ties are as shown below.



N.A.D. 1983 Coordinates  
(1996 Adjustment)

County Project Coordinates	
Northing	164359.6199
Easting	494979.0592
Date	11/20/00

I hereby certify that this United States public land survey monument record is correct and complete to the best of my knowledge and belief.

David Zieglmeier Date 2/8/23

David Zieglmeier Anoka County Surveyor  
Minnesota License Number 46179

Revision Date  
10/25/22

# HISTORY OF GOVERNMENT CORNER

Page No. 3

County of Anoka

State of Minnesota

## Northeast Corner of Sec. 2 Township 31 Range 24

### **CORNER HISTORY:**

December 21, 1962 - Found 3/4" pinched iron pipe using Cartwright and Olson ties dated 1944. Updated ties.

November 1, 1966 - Replaced 3/4" pinched iron pipe with a cast iron monument, up 0.1'±, and set sign and post 1'± north. Updated ties.

July 21, 1970 - Found cast iron monument up 0.1' and updated ties.

July 1, 1974 - Found cast iron monument and updated ties.

June 14, 1977 - Found cast iron monument and updated ties.

June 24, 1980 - Found cast iron monument and updated ties.

November 8, 1983 - Found cast iron monument and updated ties.

June 20, 1986 - Found cast iron monument and updated ties.

July 20, 1987 - Set 1/2" iron pipe construction (transit)ties and removed cast iron monument leaving a 1/2" iron pipe in its place prior to construction.

October 28, 1988 - Set cast iron monument after construction using transit ties. Updated ties and set sign and post on the north side.

August 25, 1994 - Found cast iron monument and updated ties.

November 20, 2000 - Found cast iron monument and established NAD 1983 (1996 Adjustment) Anoka County Project Coordinates by Static GPS methods. Updated ties.

February 9, 2010 - Found cast iron monument and updated ties.

March, 2015 - Found cast iron monument down 0.5'± with a sign post on the north side. Verified position by VRS GPS methods. Updated ties.

January 7, 2020 - Found cast iron monument down 0.5'± with a sign post on the north side. Verified position by VRS GPS methods. Updated ties.

July 11, 2022 - Found cast iron monument down 0.5'± with a sign post on the north side. Verified position by VRS GPS methods. Updated ties.