

CERTIFICATE OF LOCATION OF GOVERNMENT CORNER

County of Anoka

State of Minnesota

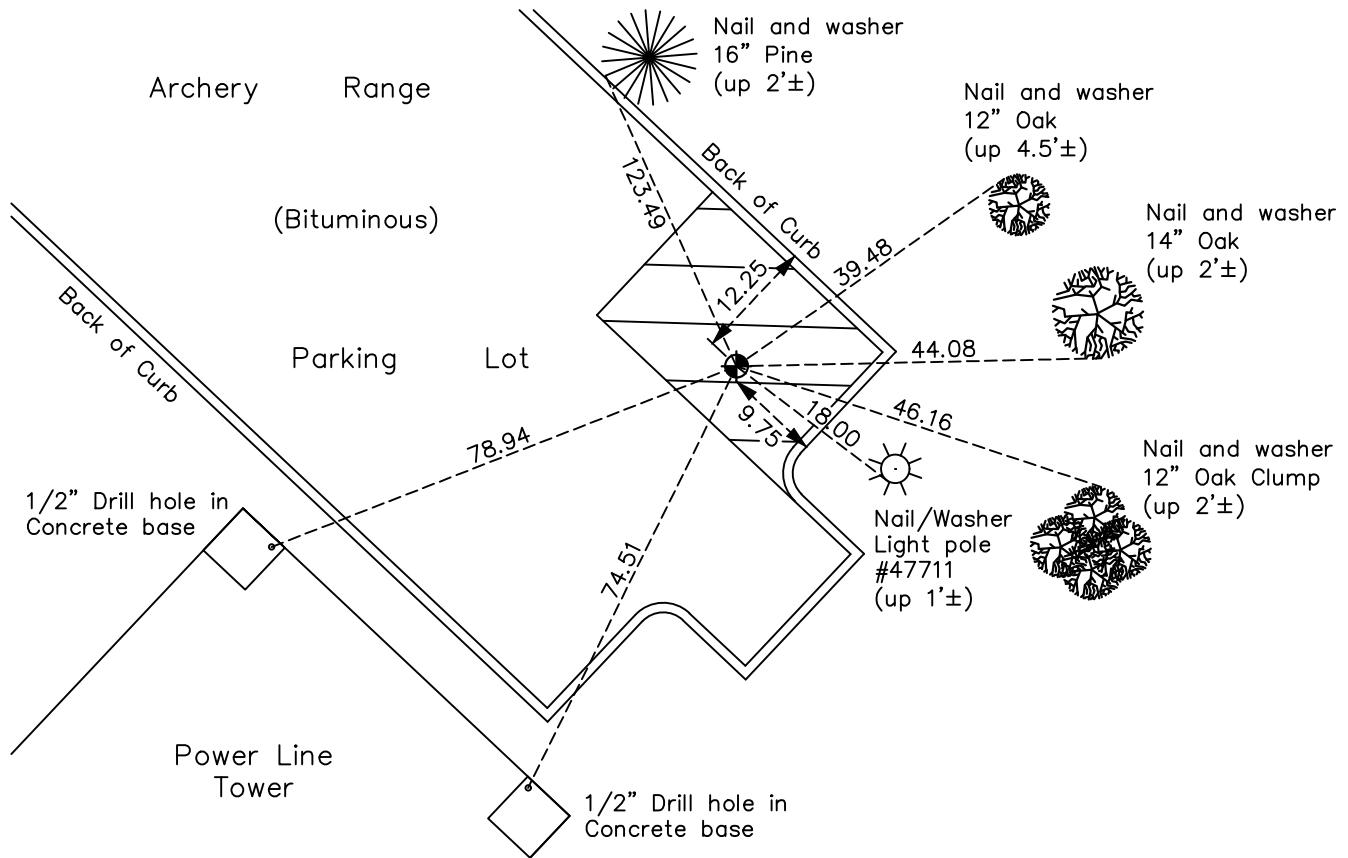
North 1/4 Corner of Sec. 2 Township 31 Range 24

On the 6th day of August, 1970, the described corner was evidenced by a 1 1/2" iron pipe up 0.5'

and to perpetuate the location of said corner, at the exact location thereof, a permanent marker was placed consisting of a shortened cast iron monument set in concrete

AND on the 11th day of July, 2022, said permanent marker was found flush and the the ties were updated

Updated reference ties are as shown below.



Revision Date
10/25/22

N.A.D. 1983 Coordinates
(1996 Adjustment)

County Project Coordinates	
Northing	<u>164407.8501</u>
Easting	<u>492364.6231</u>
Date	<u>11/17/00</u>

I hereby certify that this United States public land survey monument record is correct and complete to the best of my knowledge and belief.

David Zieglmeier Date 2/8/23

David Zieglmeier Anoka County Surveyor
Minnesota License Number 46179

HISTORY OF GOVERNMENT CORNER

Page No. 4

County of Anoka

State of Minnesota

North 1/4 Corner of Sec. 2 Township 31 Range 24

CORNER HISTORY:

May 10, 1960 - Found 1 1/2" iron pipe up 0.5'. Established ties to monument.

June 18, 1964 - Found 1 1/2" iron pipe and updated ties.

July 22, 1966 - Found 1 1/2" iron pipe and updated ties.

December 10, 1968 - Found 1" iron pipe up 1.0'± and updated ties.

August 6, 1970 - Replaced 1" iron pipe up 0.6'± with a cast iron monument up 0.1'±. Updated ties.

July 1, 1974 - Found cast iron monument and updated ties.

June 14, 1977 - Found cast iron monument and updated ties.

June 20, 1980 - Found cast iron monument and updated ties.

June 17, 1986 - Found cast iron monument and updated ties.

May 30, 1991 - Found cast iron monument and updated ties.

August 24, 1994 - Found cast iron monument and updated ties.

November 17, 2000 - Found cast iron monument and established NAD 1983 (1996 Adjustment) Anoka County Project Coordinates by Static GPS methods. Updated ties.

April 2, 2001 - Set construction (transit) ties and removed cast iron monument prior to parking lot construction.

November 4, 2003 - Set top section of cast iron monument in concrete and flush with surface after parking lot construction using construction ties. Updated ties.

March 16, 2010 - Found cast iron monument flush with blacktop and updated ties.

March 20, 2015 - Found cast iron monument flush. Verified position by VRS GPS methods. Updated ties.

January 17, 2020 - Found cast iron monument flush. Verified position by VRS GPS methods. Updated ties.

July 11, 2022 - Found cast iron monument flush. Verified position by VRS GPS methods. Updated ties.