

CERTIFICATE OF LOCATION OF GOVERNMENT CORNER

County of Anoka

State of Minnesota

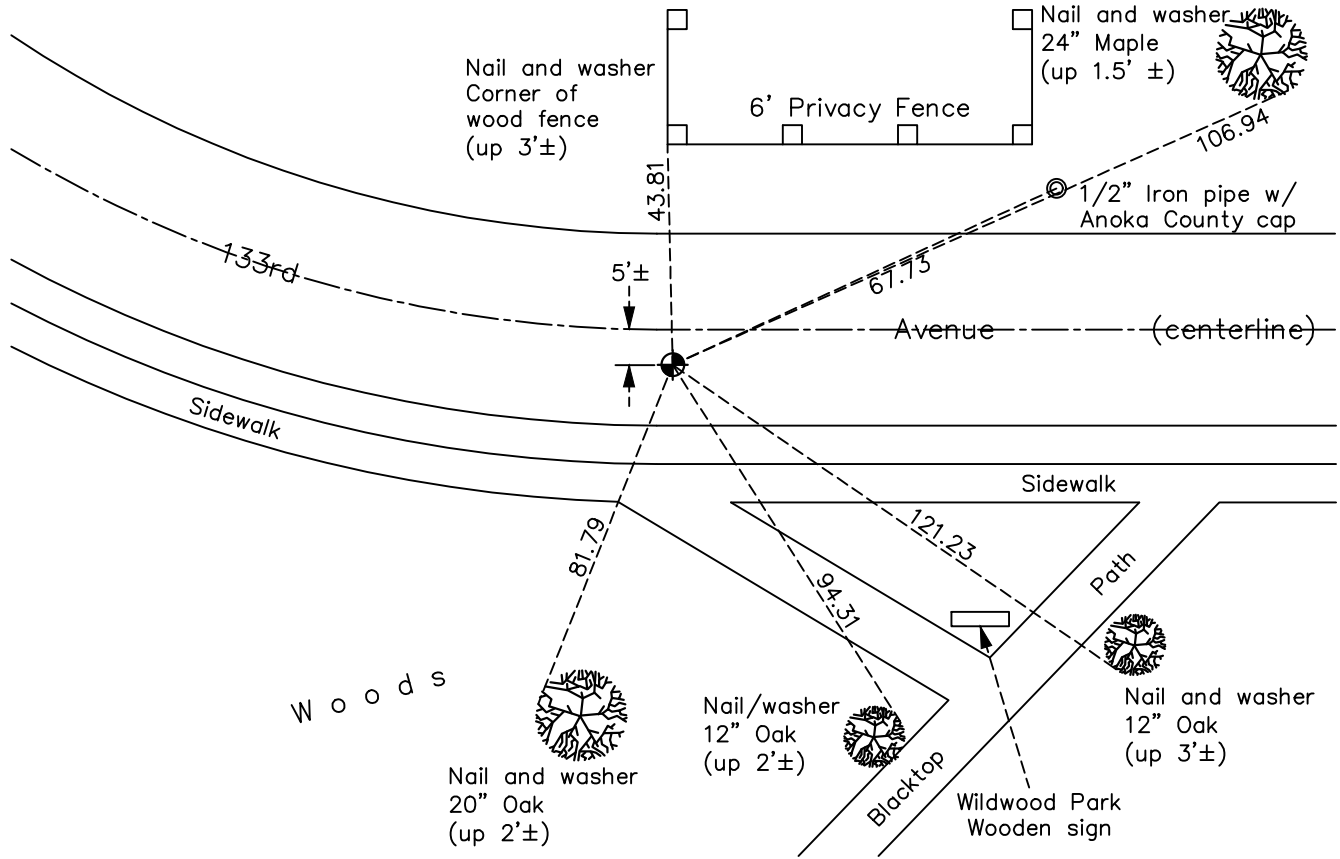
North 1/4 Corner of Sec. 3 Township 31 Range 24

On the 8th day of October, 1980, the described corner was evidenced by a 2" iron pipe found using ties by N.C. Hoium

and to perpetuate the location of said corner, at the exact location thereof, a permanent marker was placed consisting of a cast iron monument

AND on the 22nd day of July, 2022, said permanent marker was found flush and the ties were updated

Updated reference ties are as shown below.



Revision Date
10/25/22

N.A.D. 1983 Coordinates
 (1996 Adjustment)

County Project Coordinates	
Northing	<u>164533.9284</u>
Easting	<u>487105.5721</u>
Date	<u>7/19/00</u>

I hereby certify that this United States public land survey monument record is correct and complete to the best of my knowledge and belief.

David Zieglmeier Date 2/8/23

David Zieglmeier Anoka County Surveyor
 Minnesota License Number 46179

HISTORY OF GOVERNMENT CORNER

Page No. 6

County of Anoka

State of Minnesota

North 1/4 Corner of Sec. 3 Township 31 Range 24

CORNER HISTORY:

February 8, 1962 - N.C. Hoium and Associates found 2" iron pipe by an 8" fence post. Established ties to monument.

June 18, 1964 - Found 2" iron pipe flush with ground with a 6" wood post up 3' on east side using ties by N.C. Hoium. Updated ties.

July 22, 1966 - Found 2" iron pipe and updated ties.

August 4, 1970 - Found 2" iron pipe and updated ties.

July 1, 1974 - Found 2" iron pipe and updated ties.

June 14, 1977 - Found 2" iron pipe and updated ties.

October 8, 1980 - Replaced 2" iron pipe with a cast iron monument set flush with surface and set sign and post on north side. Old ties checked but were grown over. Replaced with new ties.

October 10, 1986 - Set construction (transit)ties and removed cast iron monument prior to construction. Set iron pipe in place of monument.

October 9, 1987 - Set cast iron monument after road construction using construction ties. Corner is 5'± south of centerline. Updated ties.

August 14, 1990 - Found cast iron monument and updated ties.

April 12, 1992 - Found cast iron monument and updated ties.

August 17, 1994 - Found cast iron monument and updated ties.

May 2, 1997 - Found cast iron monument and updated ties.

July 19, 2000 - Found cast iron monument and established NAD 1983 (1996 Adjustment) Anoka County Project Coordinates by Static GPS methods. Updated ties.

March 15, 2010 - Found cast iron monument down 0.1' and updated ties.

May 17, 2012 - Set construction ties, updated ties, verified location using VRS and removed cast iron monument prior to road construction.

July 2012 - Set cast iron monument flush with surface after road construction using construction ties. Verified location of corner by Static GPS methods. Updated ties.

April 13, 2015 - Found cast iron monument flush. Verified position by VRS GPS methods. Updated ties.

January 17, 2020 - Found cast iron monument flush. Verified position by VRS GPS methods. Updated ties.

July 22, 2022 - Found cast iron monument flush. Verified position by VRS GPS methods. Updated ties.